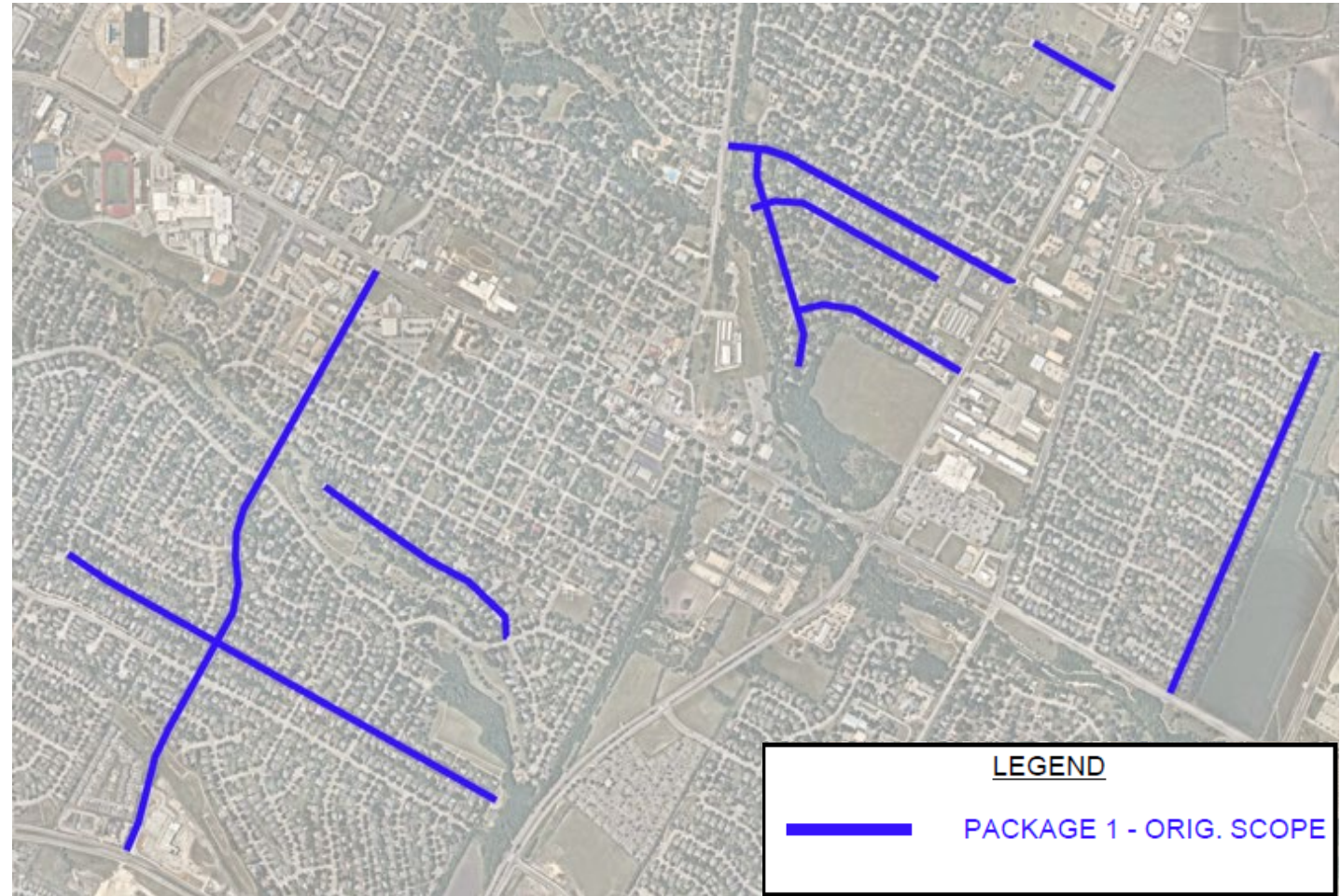


**Approving a Professional Services
Supplemental Agreement with
Half Associates, Inc. for professional
engineering services associated with the
FY 2023 Public Works Pavement
Maintenance Program**



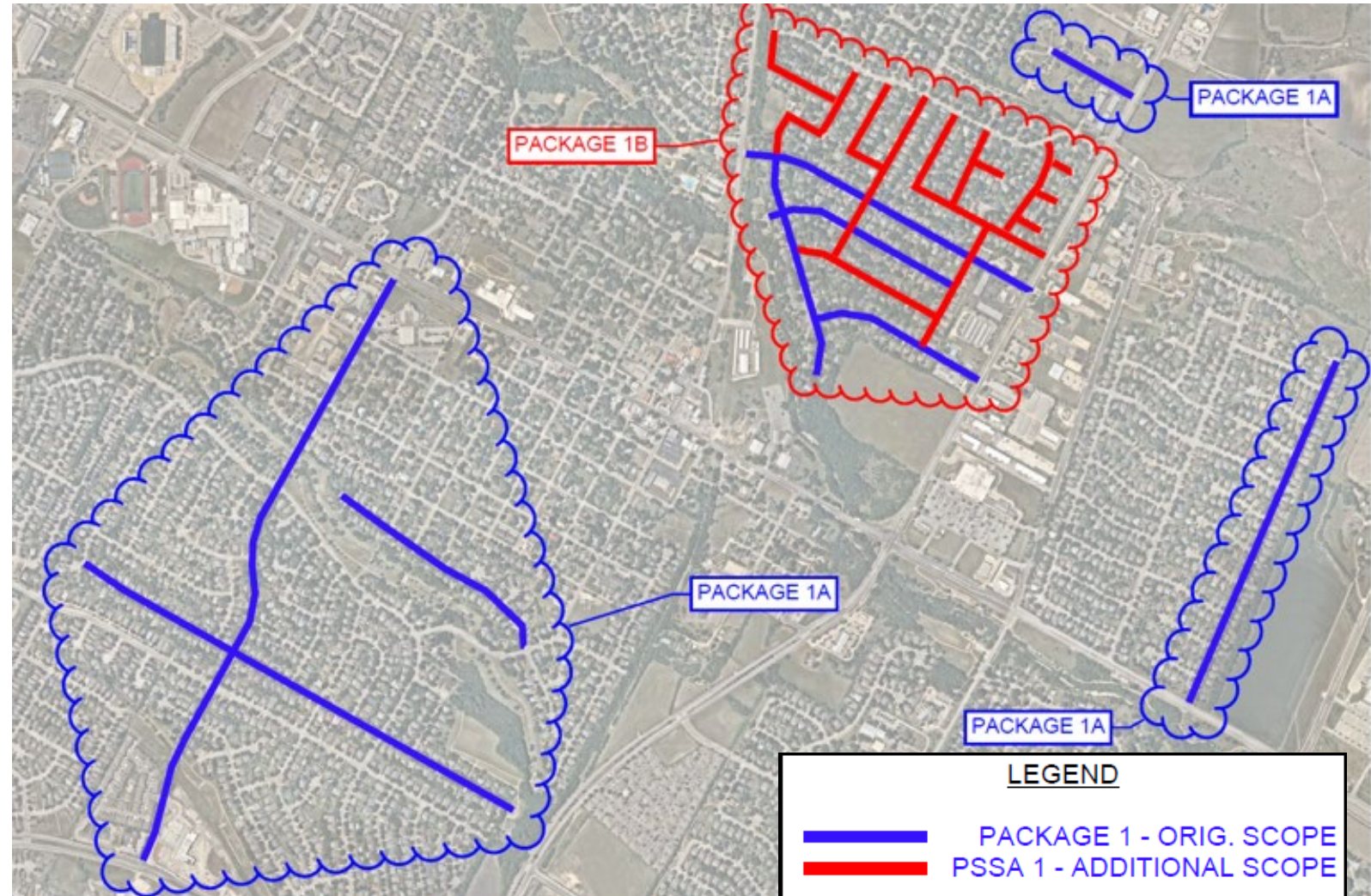
Neighborhood Maintenance Program Package 1

- Applewood Drive
- Cedar Ridge Drive
- Kay Lane
- Meadow Creek Drive
- Oak Ridge Drive
- Plumbago Drive
- W. Custers Creek Bend
- 10th Street



Additional Scope of Services

- Design Engineering Services
- Survey
- Geotechnical investigations
- Bid Phase Services
- Construction Administration Services



Recommended Action

Approve a Professional Services Supplemental Agreement with Halff Associates, Inc. in the amount of \$271,815 for professional engineering services associated with the 2023 Public Works Pavement Maintenance Program

