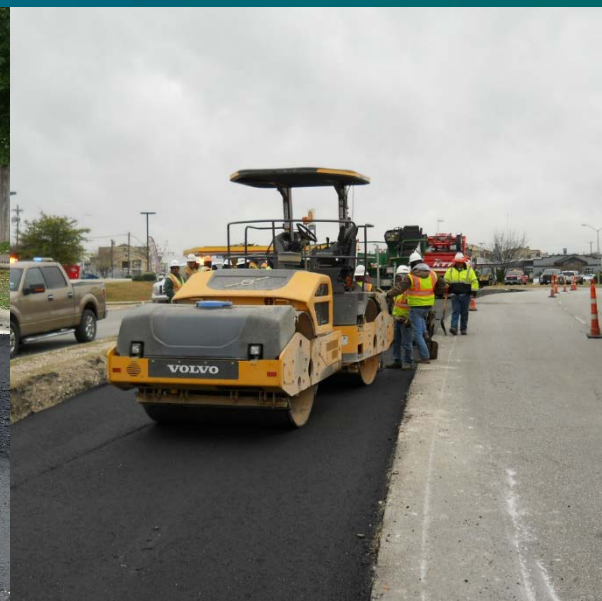


2021-0333

City of Pflugerville

Pavement Maintenance Program



FY 2021

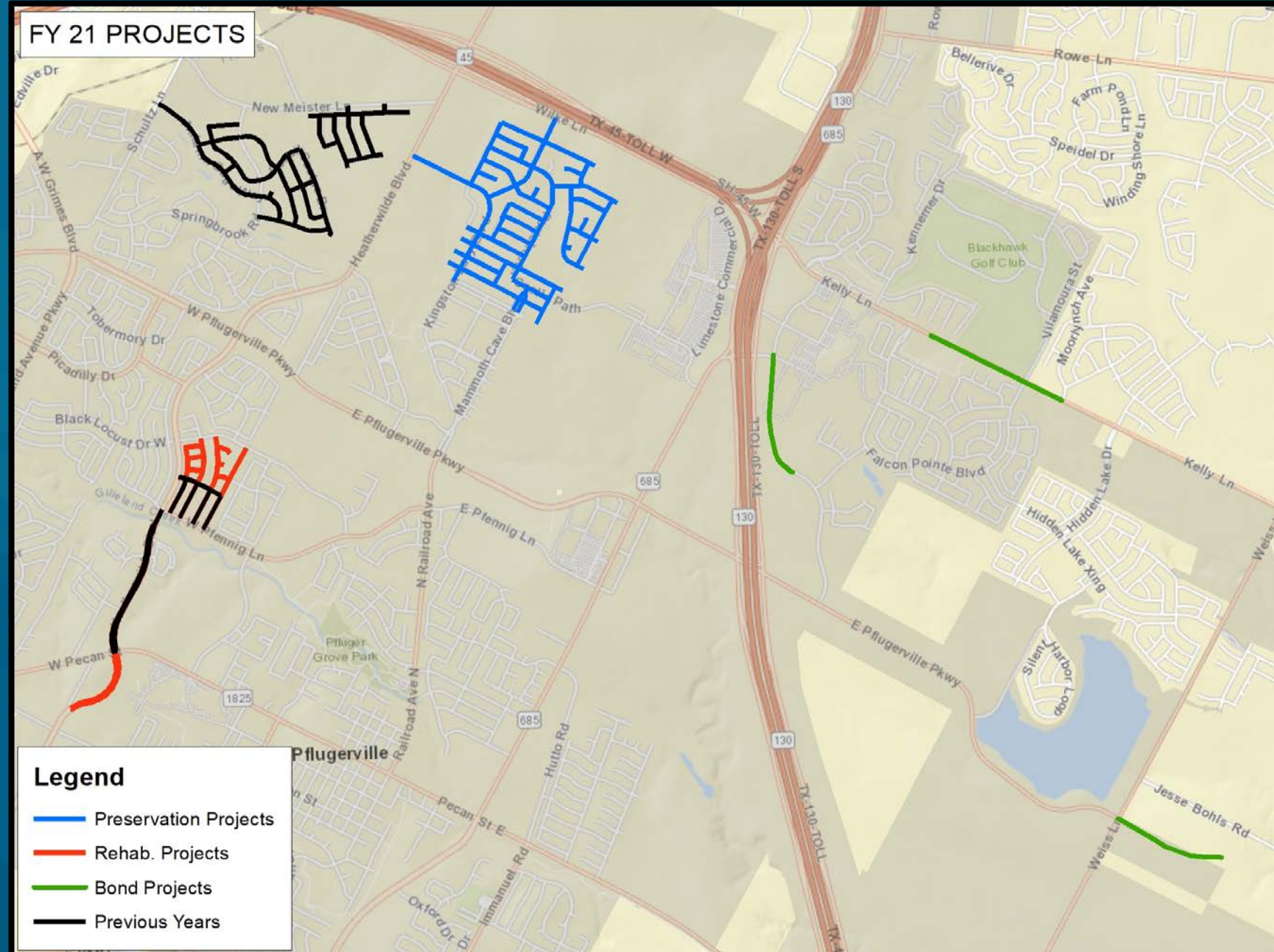
Budget = \$1,850,000

- 20% Preservation = \$370,000
- 80% Rehabilitation = \$1,480,000

- Rehabilitation - \$1,480,000
 - Heatherwilde Phase 2 Residential Streets
 - Heatherwilde Boulevard from Pecan to South of Post Office

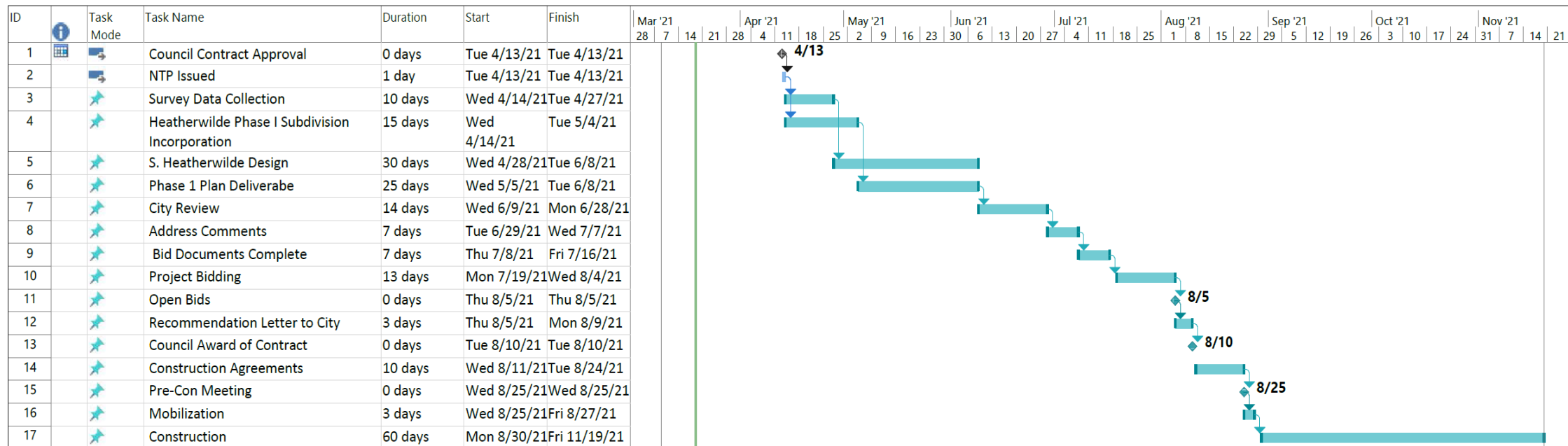
- Preservation - \$370,000
 - HA5 at Highland Park North

Total = \$1,850,000



Heatherwilde Roadway Improvements Phase II

Exhibit B



City of Pflugerville Pavement Maintenance Program

Staff recommends approving a Professional Services Supplemental Agreement with Halff Associates, Inc. in the amount of \$63,082.00 for professional engineering services associated with the Heatherwilde Subdivision Pavement Rehabilitation Project Phase II as part of the 2021 Pavement Maintenance Program and authorizing the City Manager to execute same.

