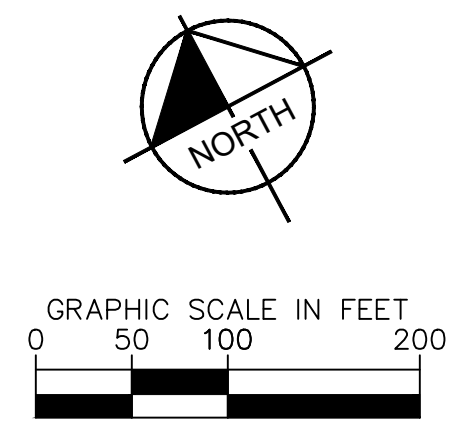
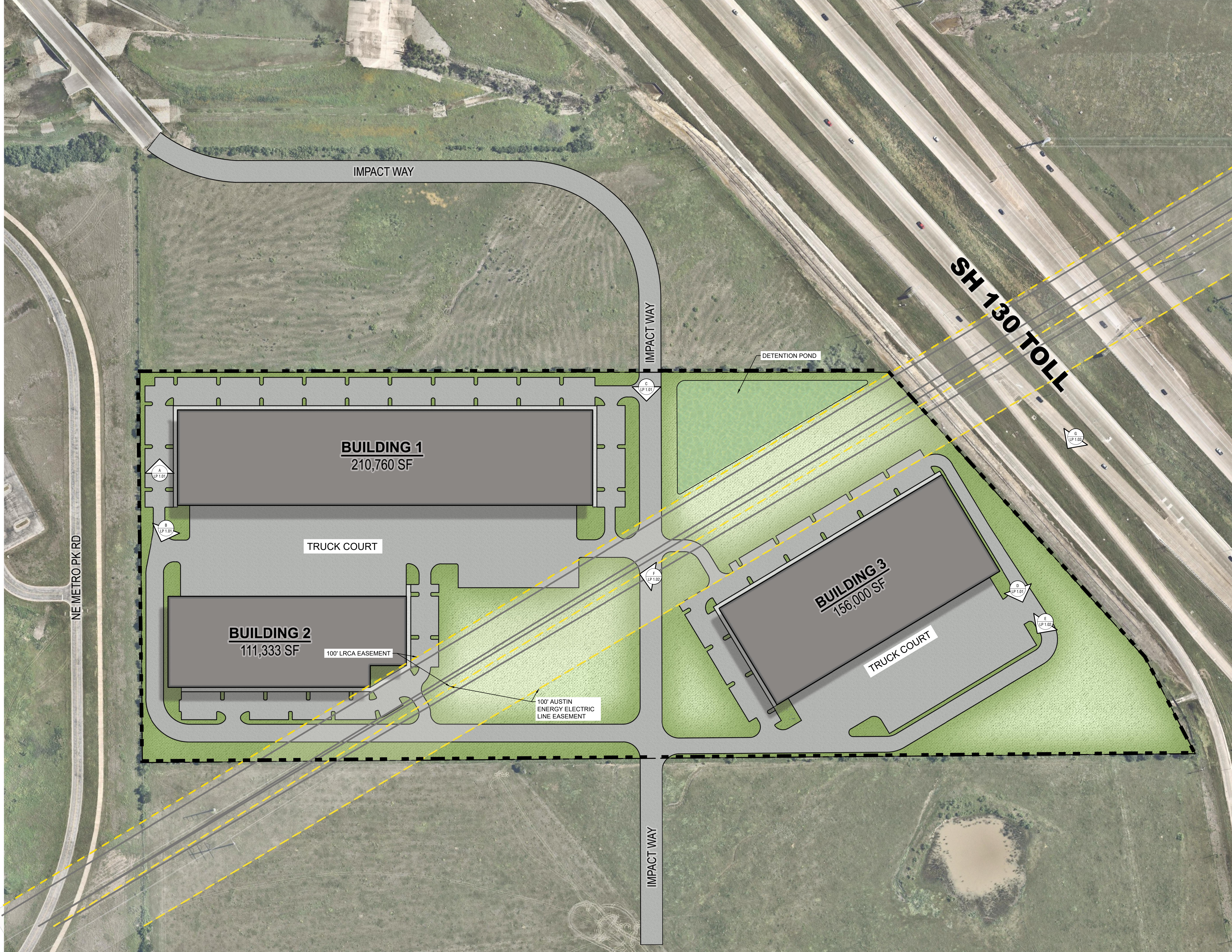


Plotted By: horton, CJ Date: April 15, 2024 01:46:55pm File Path: K:\SAU\LAP\Austin North LD Support\069423200_Scannell Pflugerville\Drawings\LP - LANDSCAPE PLAN.dwg
 This document, together with the concepts and designs presented herein, is intended only for the specific purpose and client for which it was prepared. Reuse of and improper reliance on this document without written authorization and adaptation by Kimley-Horn and Associates, Inc. shall be without liability to Kimley-Horn and Associates, Inc.



No.	REVISIONS	DATE	BY

Kimley»Horn
 © 2024 KIMLEY-HORN AND ASSOCIATES, INC.
 5301 SOUTHWEST PARKWAY BUILDING 2, SUITE 100
 PHONE: 512-418-1771 FAX: 512-418-1791
 WWW.KIMLEY-HORN.COM
 TEXAS REGISTERED ENGINEERING FIRM F-928

KHA PROJECT 069423200	DATE APRIL 2024
SCALE: AS SHOWN	DESIGNED BY:
DRAWN BY:	CHECKED BY:

**LANDSCAPE
SCREENING PLAN**

**SCANNELL
PFLUGERVILLE**
 CITY OF PFLUGERVILLE
 TRAVIS COUNTY, TEXAS

SHEET NUMBER
LP 1.00

Plotted By: horton, CJ Date: April 15, 2024 01:47:08pm File Path: K:\SAU\LALP\Austin North_LD_Support\069423200_Scannell Pflugerville\Drawings\Sheets\LP -- LANDSCAPE PLAN.dwg
This document, together with the concepts and designs presented herein, is intended only for the specific purpose and client for which it was prepared. Reuse or improper reliance on this document without written authorization and adaptation by Kimley-Horn and Associates, Inc. shall be without liability to Kimley-Horn and Associates, Inc.



G PERSPECTIVE G
SCALE: N.T.S.

No.	REVISIONS	DATE	BY

Kimley»Horn
© 2024 KIMLEY-HORN AND ASSOCIATES, INC.
5301 SOUTHWEST PARKWAY BUILDING 2, SUITE 100
PHONE: 512-418-1771 FAX: 512-418-1791
WWW.KIMLEY-HORN.COM
TEXAS REGISTERED ENGINEERING FIRM F-928

KHA PROJECT 069423200
DATE APRIL 2024
SCALE AS SHOWN
DESIGNED BY:
DRAWN BY:
CHECKED BY:

**LANDSCAPE
SCREENING PLAN**

**SCANNELL
PFLUGERVILLE**
CITY OF PFLUGERVILLE
TRAVIS COUNTY, TEXAS

SHEET NUMBER
LP 1.03