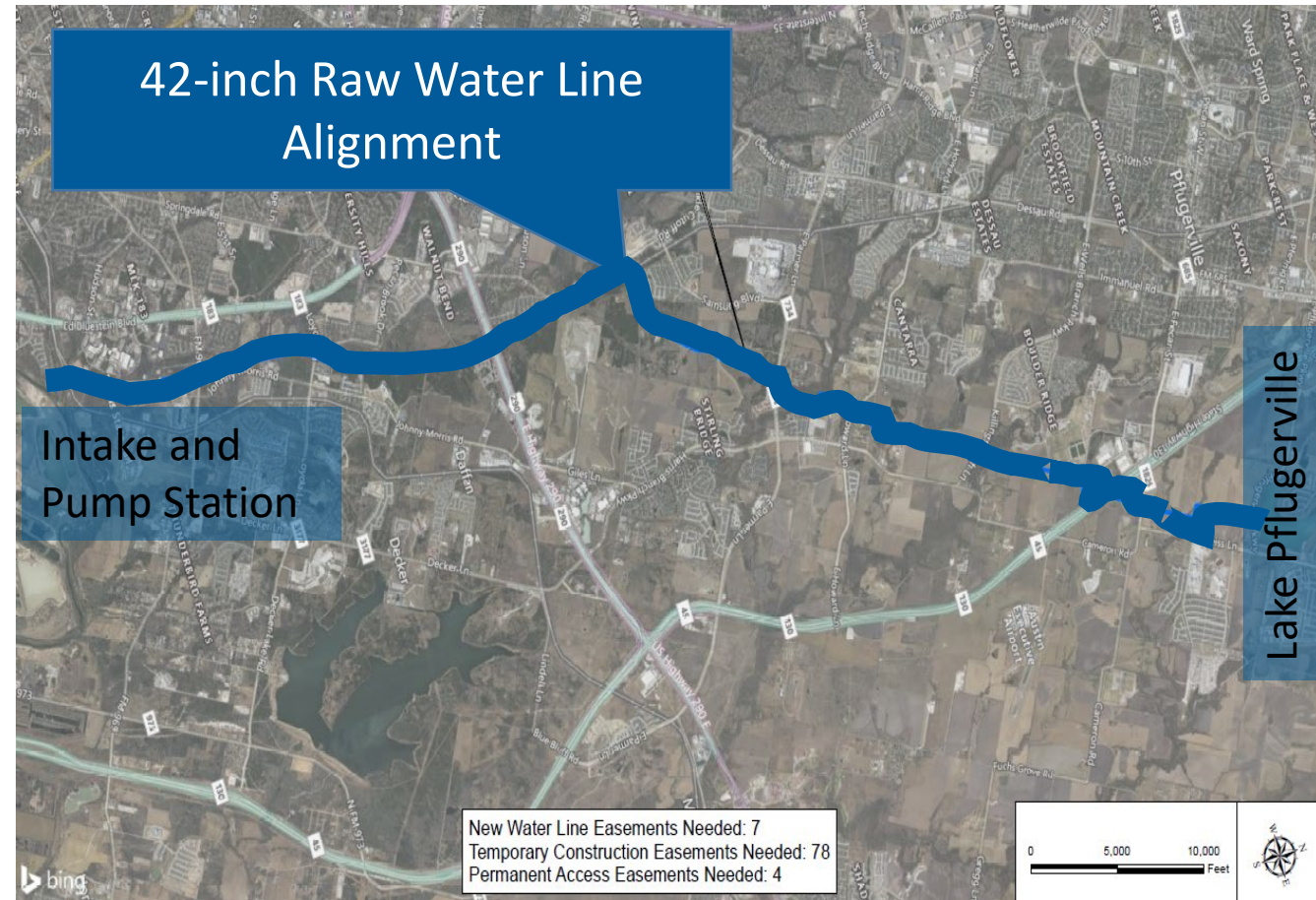


**Approving a Work Authorization  
with CBRE, Inc. for appraisal  
services associated with the  
Secondary Colorado River Raw  
Water Line Project**



# Colorado River Raw Water Line Project Overview

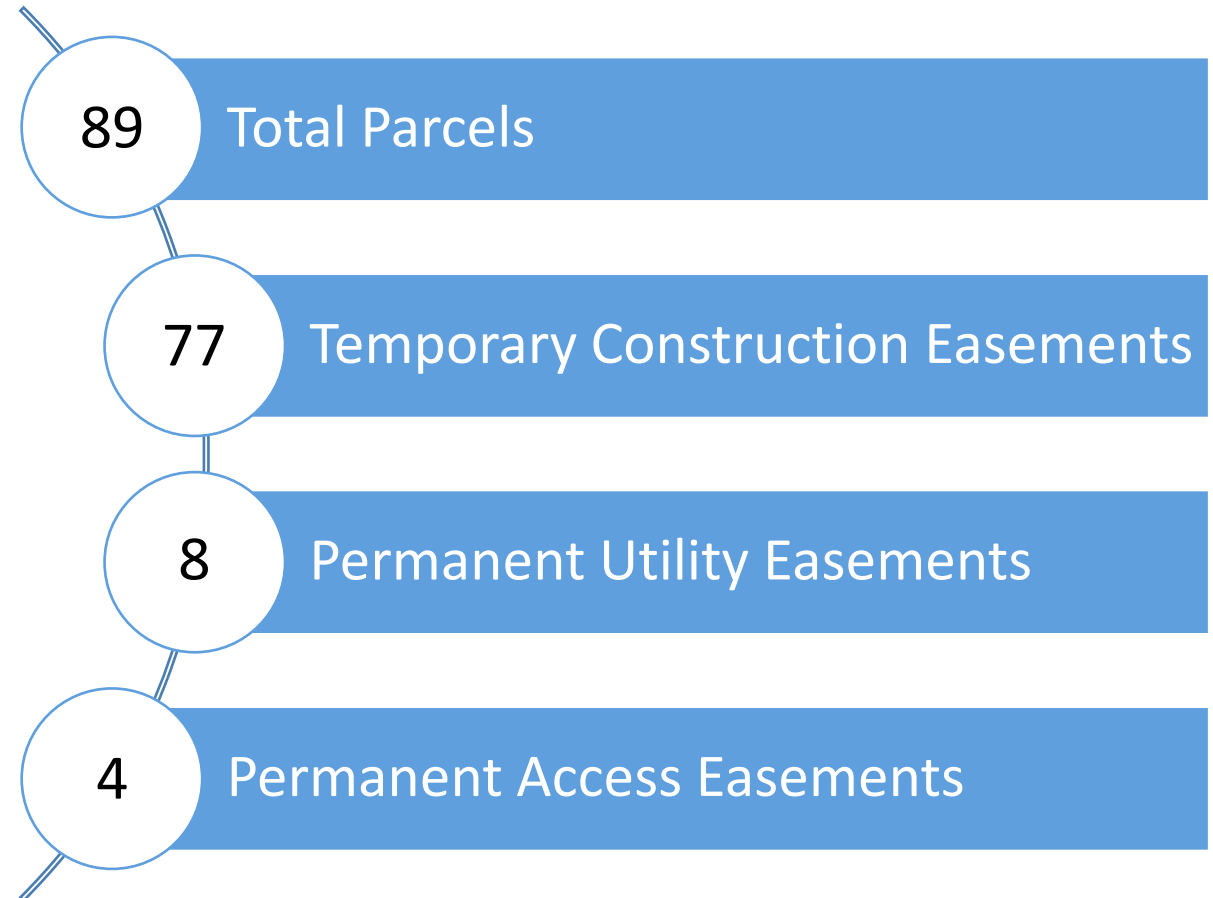
- 15 miles of 42-inch water pipeline
- Colorado River Intake Pump Station Improvements
- 12,000-acre feet/year water supply increase
- Increases supply to maintain levels of Lake Pflugerville and growth of the City



# Colorado River Raw Water Line Project

## Appraisal Services

- Appraisals will be completed on a rolling schedule as Metes & Bounds are received
- Metes & Bounds development ongoing
- Anticipated completion November '22
- 45-60 day turn around for appraisals



# Recommended Action

Approve a Work Authorization with CBRE, Inc. for appraisal services associated with the Secondary Colorado River Raw Water Line Project

