

**Discuss the supplemental amendment
for additional traffic analysis,
geotechnical services, and ROW
documentation associated with the 2020
Transportation Bond Program Project:
East Pecan Street Project**



Project Overview

- Project Limits: Sun Light Near Way to Weiss Lane
- Widen from existing 3-lane to 6-lane divided urban roadway
- Improve intersections at SH 130 and Weiss Lane/Cameron Road



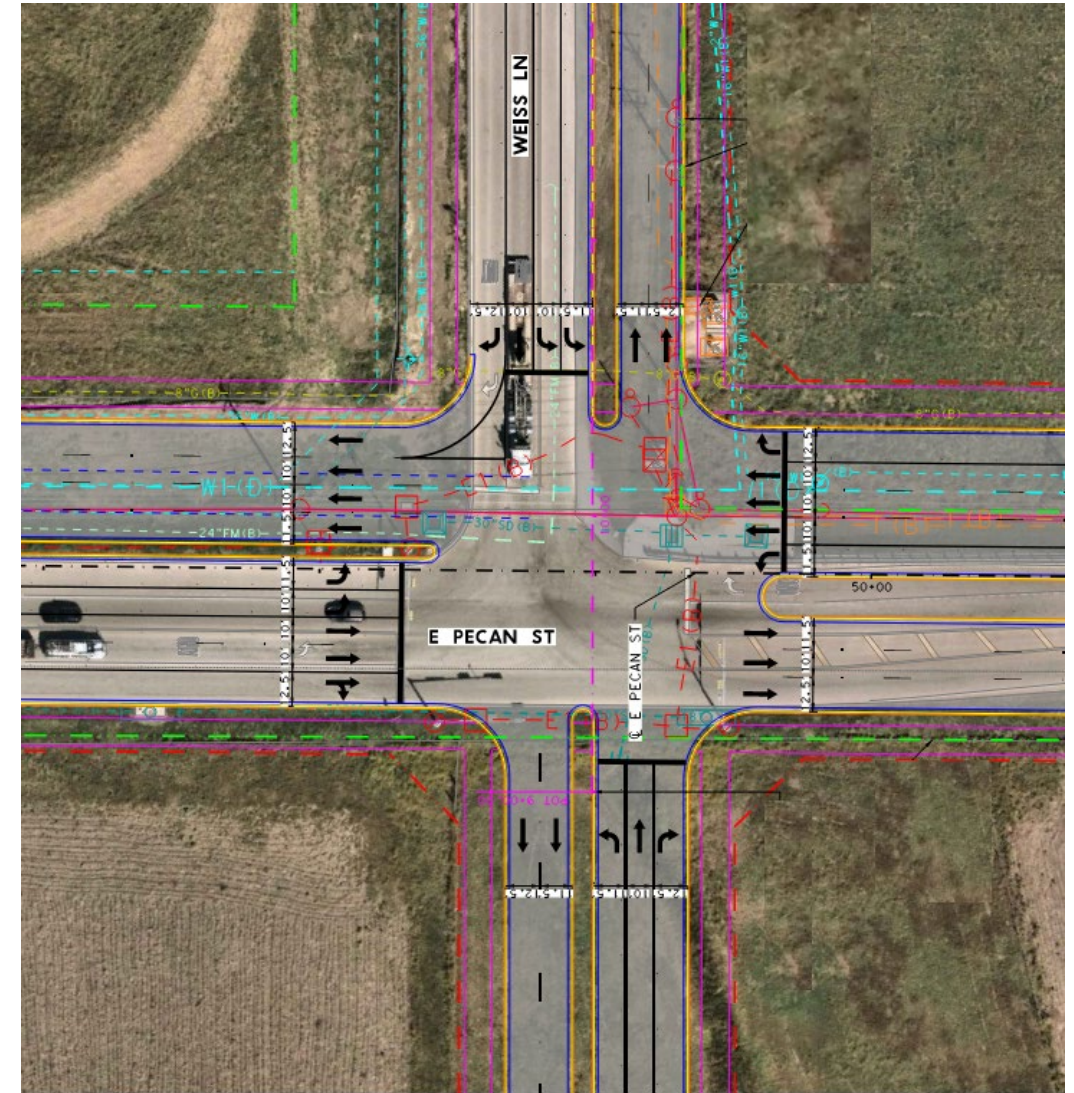
Additional Scope of Services

- The amended scope of services include additional traffic analysis, geometric design, and ROW acquisition for the E. Pecan St and Weiss Lane/future Cameron Rd. intersection. This includes an analysis/evaluation of an alternate innovative intersection. Geotechnical services for lifecycle analysis of existing pavement to provide a sustainable, more robust and resilient project.
- Services to be provided:
 - Field Surveying
 - Preparation Of ROW Acquisition Documents
 - Preliminary Design
 - Geotechnical Studies
 - Traffic Analysis
 - Preparation Of A Geometric Schematic & Future Intersection Exhibit
 - Preparation Of A Preliminary Engineering Report



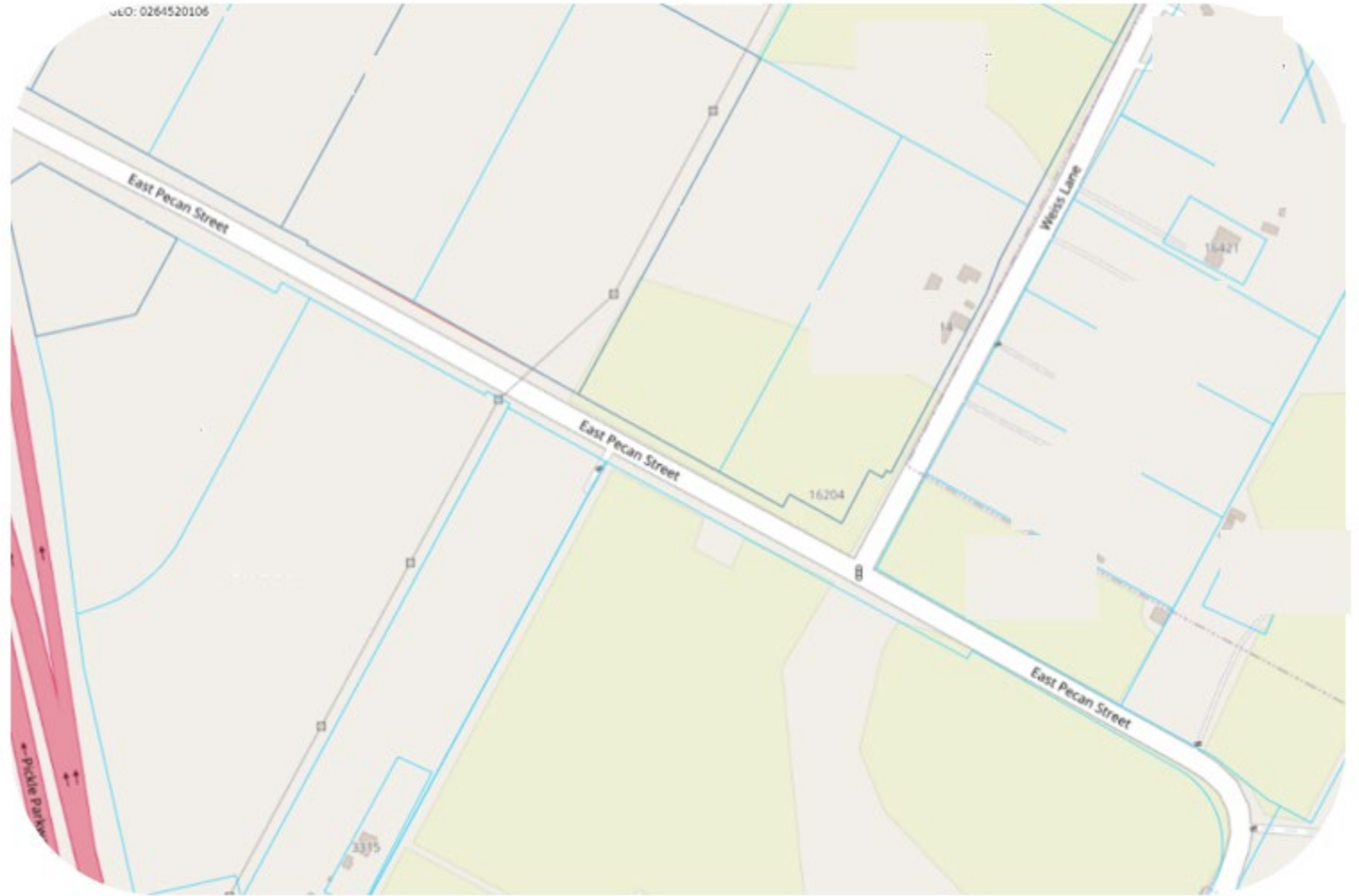
Traffic Analysis

- Original scope included analysis of anticipated traditional intersection at E Pecan St/Weiss Lane & future Cameron Rd.
- Kimley-Horn performed traffic analysis and results indicate traffic congestion and delay at 20th year of service which would reduce the level of service
- Traffic flows exceed traditional intersection capacity due to high left turns in East to North and South to West direction.
- At 20th year and beyond, an innovative intersection could better accommodate project traffic volumes
- A separate more in-depth traffic modeling program is used to evaluate innovative intersection



Right-of-Way Acquisition

- Construction of innovative intersection (if feasible) will not be included as part of 2020 Bond Program
- Roadway geometrics will be designed to identify ROW footprint.
- Acquire ROW now to reserve space for potential future project, before land is further developed.



Geotechnical Engineering

- Proposed 6-lane section uses existing E. Pecan Street pavement.
- Pavement lifecycle analysis and rehabilitation alternatives will increase asset service life.

