

RESOLUTION NO. \_\_\_\_\_

**RESOLUTION OF THE CITY OF PFLUGERVILLE, TEXAS REVISING RESOLUTION 1569-17-07-25-0431 AND APPROVING THE UPDATED REQUEST FOR ATHLETIC FIELD LIGHTING AT 1849 PARK LOCATED AT 16430 CAMERON ROAD.**

**WHEREAS**, Subchapter 13.9 of the Unified Development Code (UDC) states that athletic field lighting requires approval by the City Council as approved by Ordinance No. 1203-15-02-24; and

**WHEREAS**, applications were made for Site Development Permits by the City of Pflugerville, Texas (Applicant) in accordance with Subchapter 3 Procedures of UDC Chapter 157; and

**WHEREAS**, City Council passed Resolution 1569-17-07-25-0431, Exhibit A, on the 25<sup>th</sup> day of July 2017 approving a variance for the athletic field lighting; however, only the soccer field lights were installed per the As-Built records of 2018 and not the football field lights; and

**WHEREAS**, Applicant now requests to install athletic field lights for 3 football fields and 3 baseball fields as shown in Exhibits B and C; and.

**WHEREAS**, the City Council may evaluate and establish alternate provisions for athletic field lighting based on the context of the request in accordance with its UDC.

**NOW THEREFORE, BE IT RESOLVED BY THE CITY COUNCIL OF THE CITY OF PFLUGERVILLE, TEXAS:**

1. That the request for athletic field lighting for 1849 Park located at 16430 Cameron Road, as shown in Exhibits B and C, is hereby approved with the following limitations:
  - A. Lighting shall be installed as shown on the equipment layout plans and illumination summaries included with the application as shown in Exhibits B and C.
  - B. The proposed lighting shall be as provided in the application and subject to all other regulations defined in the UDC.
  - C. The proposed lighting shall meet illumination levels consistent with UDC requirements.
  - D. The light poles shall not exceed the maximum height of 70 feet.
  - E. Lighting for the parking lot and pedestrian paths will be provided at a smaller scale, in accordance with UDC requirements, as shown in Exhibits B and C.

F. The operational period of the athletic field lighting for all fields will be between sunrise and 11pm.

2. Except as expressly modified herein, the remainder of Resolution 1569-17-07-25-0431 shall remain in full force and effect.
3. This Resolution shall be in full force and effect from and after its passage and approval.

PASSED AND APPROVED this 10<sup>th</sup> day of September 2024.

CITY OF PFLUGERVILLE, TEXAS

by: \_\_\_\_\_  
Victor Gonzales, Mayor

ATTEST:

\_\_\_\_\_  
Trista Evans, City Secretary

APPROVED AS TO FORM:

\_\_\_\_\_  
Charles E. Zech, City Attorney  
Denton Navarro Rodriguez Bernal Santee & Zech, P.C.

**EXHIBIT A**

RESOLUTION NO. 1569-17-07-25-0431

**RESOLUTION OF THE CITY OF PFLUGERVILLE, TEXAS  
APPROVING THE REQUEST FOR ATHLETIC FIELD LIGHTING AT  
1849 PARK LOCATED AT 16430 CAMERON ROAD.**

WHEREAS, Subchapter 13.9 of the Unified Development Code (UDC) states that athletic field lighting requires approval by the City Council as approved by Ordinance No. 1203-15-02-24; and

WHEREAS, an application was made for a Site Development Permit in accordance with Subchapter 3 Procedures of Chapter 157 Unified Development Code; and

WHEREAS, the athletic field lighting on the subject property described in Exhibit A will be limited to the following:

1. Lighting shall be installed as shown on the proposed site plan, equipment layout and illumination summary included with the application as shown in Exhibit B.
2. The proposed lighting shall be as provided in the application and subject to the regulations defined in the Unified Development Code (UDC).

NOW THEREFORE, BE IT RESOLVED BY THE CITY COUNCIL OF THE CITY OF PFLUGERVILLE, TEXAS:

That the request for athletic field lighting for 1849 Park located at 16430 Cameron Road is hereby approved.

PASSED AND APPROVED this 25<sup>th</sup> day of July, 2017.

CITY OF PFLUGERVILLE, TEXAS

by:   
Victor Gonzales, Mayor

ATTEST:

  
KAREN THOMPSON, City Secretary

APPROVED AS TO FORM:

  
George Hyde, City Attorney

**EXHIBIT A**

243.70 ACRES OF LAND, MORE OR LESS, OUT OF THE WILLIAM CALDWELL SURVEY NO. 66, ABSTRACT NO. 162 AND THE JOHN LIESSE SURVEY NO. 18, ABSTRACT NO. 406 IN TRAVIS COUNTY, TEXAS, SAID 243.70 ACRE TRACT COMPRISED OF TRACT 1 (211.71 ACRES) AND TRACT 2 (31.99 ACRES).

# EXHIBIT B

From Hometown to Professional



## 1849 Park Philaene, TX

### Lighting System

Fixture ID	Footcandle	Mfg. Part #	Fixture Qty	Lumens/Type	Power	Group
F1-12	80'	20'	10	TLC-LED-1150	11.50kW	A
F3-14	80'	80'	10	TLC-LED-1150	11.50kW	A
				TLC-LED-1150	13.00kW	B
				TLC-LED-1150	11.5kW	B
				TLC-LED-1150	11.5kW	A
				TLC-LED-1150	11.50kW	C
				TLC-LED-1150	13.86kW	B
				TLC-LED-1150	11.5kW	C
				TLC-LED-1150	11.5kW	B
				TLC-LED-1150	11.50kW	C
				TLC-LED-1150	13.00kW	D
				TLC-LED-1150	11.5kW	B
				TLC-LED-1150	11.5kW	C
				TLC-LED-1150	11.50kW	C
				TLC-LED-1150	11.5kW	C
				TLC-LED-1150	11.5kW	C
				TLC-LED-1150	11.5kW	C
				TLC-LED-1150	11.5kW	C
				TLC-LED-1150	34.50kW	D
				TLC-LED-1150	34.50kW	F
				TLC-LED-1150	34.50kW	D
				TLC-LED-1150	34.50kW	F
				TLC-LED-1150	23.00kW	F
				TLC-LED-1150	23.00kW	F
				TLC-LED-1150	23.00kW	F
				TLC-LED-1150	23.00kW	F
				TLC-LED-1150	34.50kW	E
				TLC-LED-1150	34.50kW	E
				TLC-LED-1150	34.50kW	E
				TLC-LED-1150	34.50kW	E
				TLC-LED-1150	644.00 kW	

### Group Summary

Group	Description	Avg Load	Max Load	Fixture Qty
A	Field 1	50.61kW	50.61kW	44
B	Field 2	50.61kW	50.61kW	44
C	Field 3	50.61kW	50.61kW	44
D	Score 1-2	161.01kW	161.01kW	140
E	Score 3-4	161.01kW	161.01kW	140
F	Score 5-6	161.01kW	161.01kW	140

### Fixture Type Summary

Type	Source	Wattage	Lumens	LxH	L75	Quantity
TLC-LED-1150	LED 5700K - 75 CRI	1100W	121,000	8x1,000	8x1,000	500

### Light Level Summary

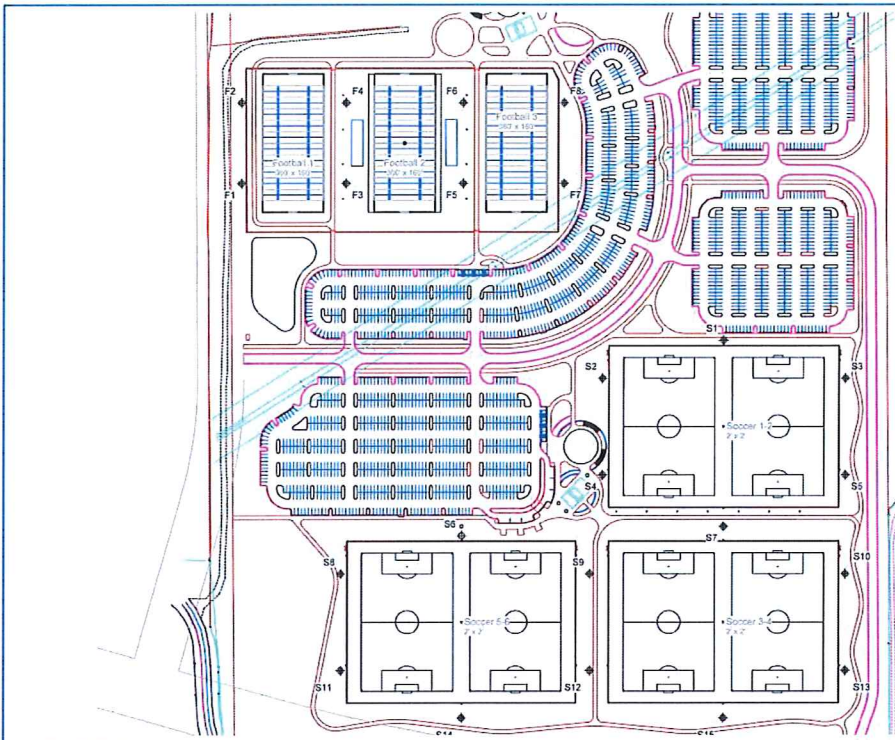
Group Name	Calculation Method	Avg	Bin	Emittance	Max	Groups	Fixture Qty
Field 1	Horizontal	50.9	42	52	1.02	A	44
Field 2	Horizontal	54	43	72	1.00	B	44
Field 3	Horizontal	57.3	44	55	1.00	C	44
Score 1-2	Horizontal	21.3	20	65	1.05	D	140
Score 3-4	Horizontal	21.3	20	65	1.05	E	140
Score 5-6	Horizontal	21.3	20	65	1.05	F	140



We Make It Happen.

Not to be reproduced in whole or part without the written consent of Musco Sports Lighting, LLC. © 1997, 2017 Musco Sports Lighting, LLC.

### PROJECT SUMMARY



SCALE IN FEET 1" = 200'

ENGINEERED DESIGN By: Justin Van Soelen • File #18134781 • 13-Mar-17

Note: Locations and dimensions are relative to S16 reference point.

**1849 Park**  
#Project: 1849

**EQUIPMENT LAYOUT**

**INCLUDES:**

- Football 1
- Football 2
- Football 3
- Soccer 1
- Soccer 2
- Soccer 3
- Soccer 4
- Soccer 5

Electrical System Requirements: Refer to Ampage Draw Chart and/or the "Musco Control System Summary" for electrical sizing.  
 Installation Requirements: Results assume a 3% nominal voltage at line side of the driver and structures located within 3 feet (1m) of design locations.

**EQUIPMENT LIST FOR AREAS SHOWN**

Qty	Location	Size	Height	Mounting	Notes	Wattage	Volts
4	F1-F2	8'0"	30'	TC	TC 400-1550	100	0'
4	F3-F4	8'0"	30'	TC	TC 400-1550	100	0'
4	F5-F6	8'0"	30'	TC	TC 400-1550	100	0'
4	F7	8'0"	30'	TC	TC 400-1550	100	0'
2	S1	8'0"	30'	TC	TC 400-1550	100	0'
2	S2	8'0"	30'	TC	TC 400-1550	100	0'
2	S3	8'0"	30'	TC	TC 400-1550	100	0'
2	S4	8'0"	30'	TC	TC 400-1550	100	0'
2	S5	8'0"	30'	TC	TC 400-1550	100	0'
2	S6	8'0"	30'	TC	TC 400-1550	100	0'
2	S7	8'0"	30'	TC	TC 400-1550	100	0'
2	S8	8'0"	30'	TC	TC 400-1550	100	0'
2	S9	8'0"	30'	TC	TC 400-1550	100	0'
2	S10	8'0"	30'	TC	TC 400-1550	100	0'
2	S11	8'0"	30'	TC	TC 400-1550	100	0'
2	S12	8'0"	30'	TC	TC 400-1550	100	0'
2	S13	8'0"	30'	TC	TC 400-1550	100	0'
2	S14	8'0"	30'	TC	TC 400-1550	100	0'
2	S15	8'0"	30'	TC	TC 400-1550	100	0'
2	S16	8'0"	30'	TC	TC 400-1550	100	0'

**SINGLE LUMINAIRE AMPERAGE DRAW CHART**

Ballast Specifications (at line voltage)	Line Amperage Per Luminaire (line foot)				
Single Phase Voltage	208	220	240	277	347
100W-120V	1.9	1.8	2.1	2.2	2.2

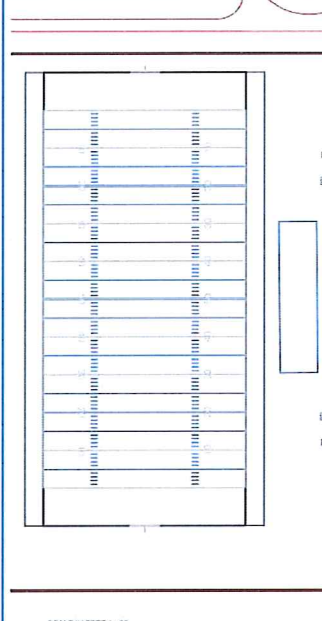
Note: All ballast values are based on a 3% voltage drop.



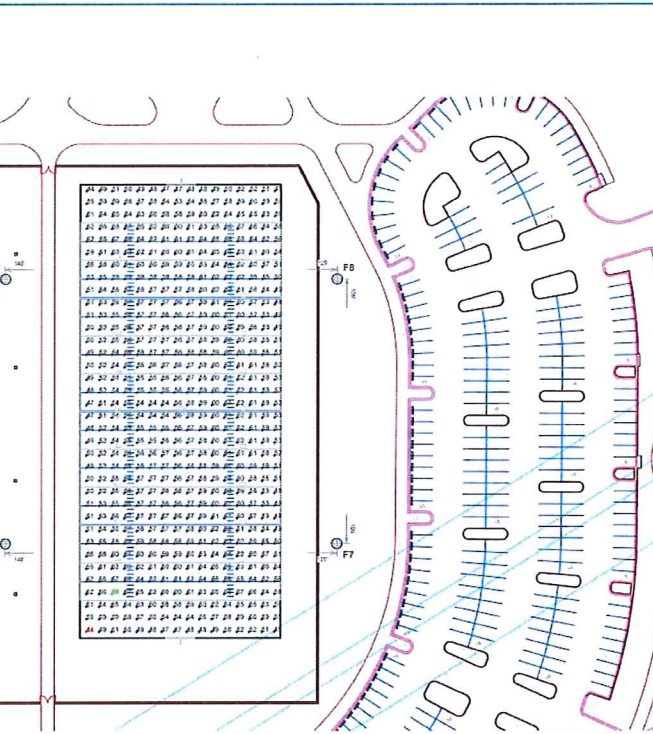
For more information, please call or visit our website at [www.musco.com](http://www.musco.com).  
 Musco Lighting, LLC, 61251, 2517 Musco Sports Lighting, LLC.

**EQUIPMENT LAYOUT**

EQUIPMENT LIST FOR AREAS SHOWN										
KEY	LOCATION	SIZE	WATTAGE	WATTAGE	WATTAGE	WATTAGE	WATTAGE	WATTAGE	WATTAGE	WATTAGE
1	F5	8'0"	100	100	100	100	100	100	100	100
2	F7-F8	8'0"	100	100	100	100	100	100	100	100



SCALE IN FEET 1:60  
ENGINEERED DESIGN By: Justin Van Soelen • File #18134781 • 13-Mar-17



SCALE IN FEET 1:60  
ENGINEERED DESIGN By: Justin Van Soelen • File #18134781 • 13-Mar-17

### 1849 Park

1849 Park  
#1849P-01X

GRID SUMMARY	
Name:	Footcandle
Size:	302 x 150'
Spacing:	10.0' x 10.0'
Height:	8.0' above grade

ILLUMINATION SUMMARY	
Guaranteed Average:	36
Scale Average:	32.54
Minimum:	68
Maximum:	61
Avg. F.M.M.:	1.30
Guaranteed Max. A.M.:	2
Max. A.M.:	1.53
UG (adjacent pt.):	1.24
CU:	0.68
No. of Fixtures:	195

**LUMINAIRE INFORMATION:**  
 Color Temp: 5700K - 5750K  
 Luminaire Output: 121,000 lumens  
 No. of Luminaires: 64  
 Total Load: 548.8 W

Luminaire Type	100W	150W	180W	250W
TIC LED 1100	253,000	251,000	251,000	251,000

Reported per IES-11.11. See luminaire data sheet for details.

**Guaranteed Performance:** The ILLUMINATION described above is guaranteed per your Master Warranty document and includes a 5% d.f. depreciation factor.

**Field Measurements:** Individual field measurements may vary from computer calculated predictions and should be taken in accordance with IESNA RP-6-15.

**Electrical System Requirements:** Refer to Appendix D for details for the "Master Control System Summary" for electrical wiring.

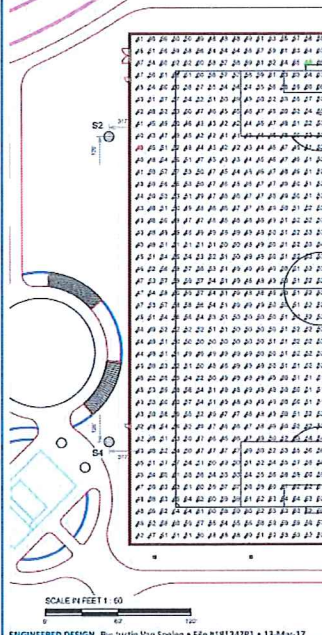
**Installation Requirements:** Fixtures assume a 3% nominal voltage at line side of the driver and structures located within a 3-foot (3') of design locations.

**MUSCO Lighting**  
We Make It Happen.

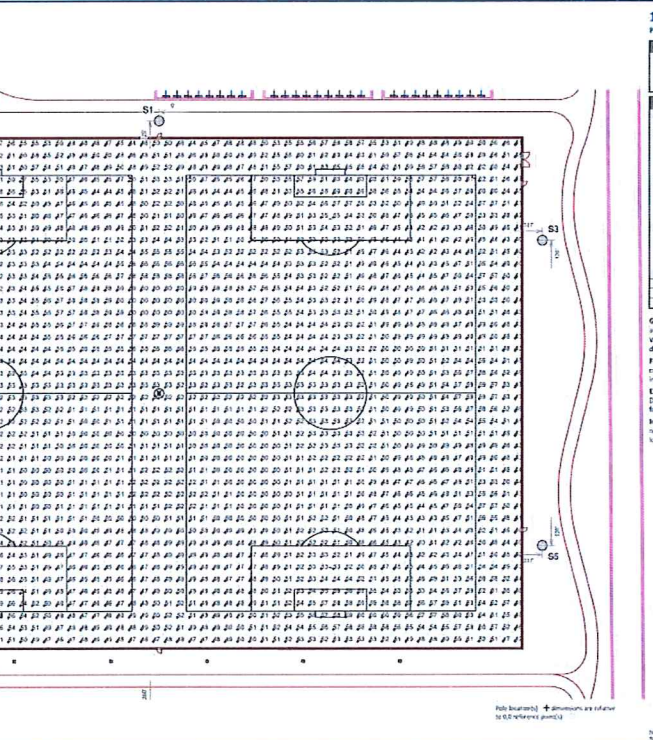
Not to be reproduced in whole or part without the written consent of Musco Sports Lighting, LLC. © 2015 Musco Sports Lighting, LLC.

ILLUMINATION SUMMARY

EQUIPMENT LIST FOR AREAS SHOWN										
KEY	LOCATION	SIZE	WATTAGE	WATTAGE	WATTAGE	WATTAGE	WATTAGE	WATTAGE	WATTAGE	WATTAGE
1	S1	100'	100	100	100	100	100	100	100	100
2	S2-S3	150'	100	100	100	100	100	100	100	100
3	S7	100'	100	100	100	100	100	100	100	100



SCALE IN FEET 1:60  
ENGINEERED DESIGN By: Justin Van Soelen • File #18134781 • 13-Mar-17



SCALE IN FEET 1:60  
ENGINEERED DESIGN By: Justin Van Soelen • File #18134781 • 13-Mar-17

### 1849 Park

1849 Park  
#1849P-01X

GRID SUMMARY	
Name:	Section 2-2
Size:	7 x 2
Spacing:	10.0' x 10.0'
Height:	8.0' above grade

ILLUMINATION SUMMARY	
Guaranteed Average:	36
Scale Average:	31.54
Minimum:	65
Maximum:	61
Avg. F.M.M.:	1.30
Guaranteed Max. A.M.:	2
Max. A.M.:	1.45
UG (adjacent pt.):	1.23
CU:	0.78
No. of Fixtures:	2520

**LUMINAIRE INFORMATION:**  
 Color Temp: 5700K - 5750K  
 Luminaire Output: 121,000 lumens  
 No. of Luminaires: 180  
 Total Load: 548.8 W

Luminaire Type	100W	150W	180W	250W
TIC LED 1100	253,000	251,000	251,000	251,000

Reported per IES-11.11. See luminaire data sheet for details.

**Guaranteed Performance:** The ILLUMINATION described above is guaranteed per your Master Warranty document and includes a 5% d.f. depreciation factor.

**Field Measurements:** Individual field measurements may vary from computer calculated predictions and should be taken in accordance with IESNA RP-6-15.

**Electrical System Requirements:** Refer to Appendix D for details for the "Master Control System Summary" for electrical wiring.

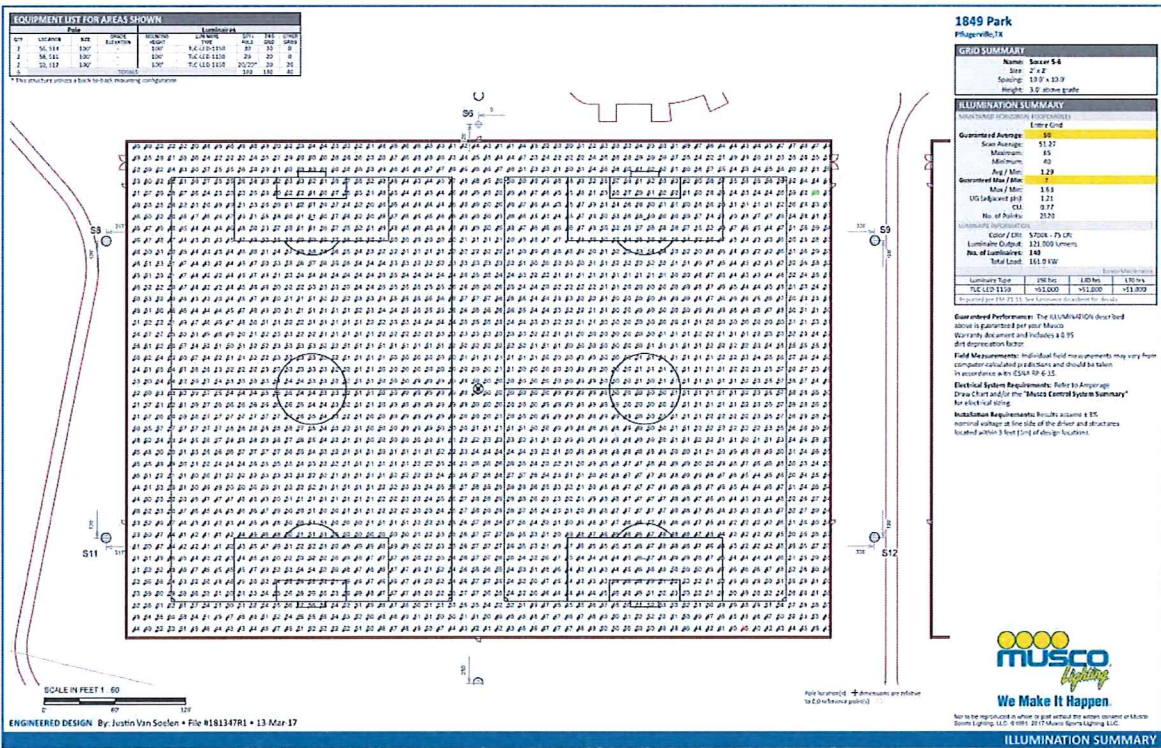
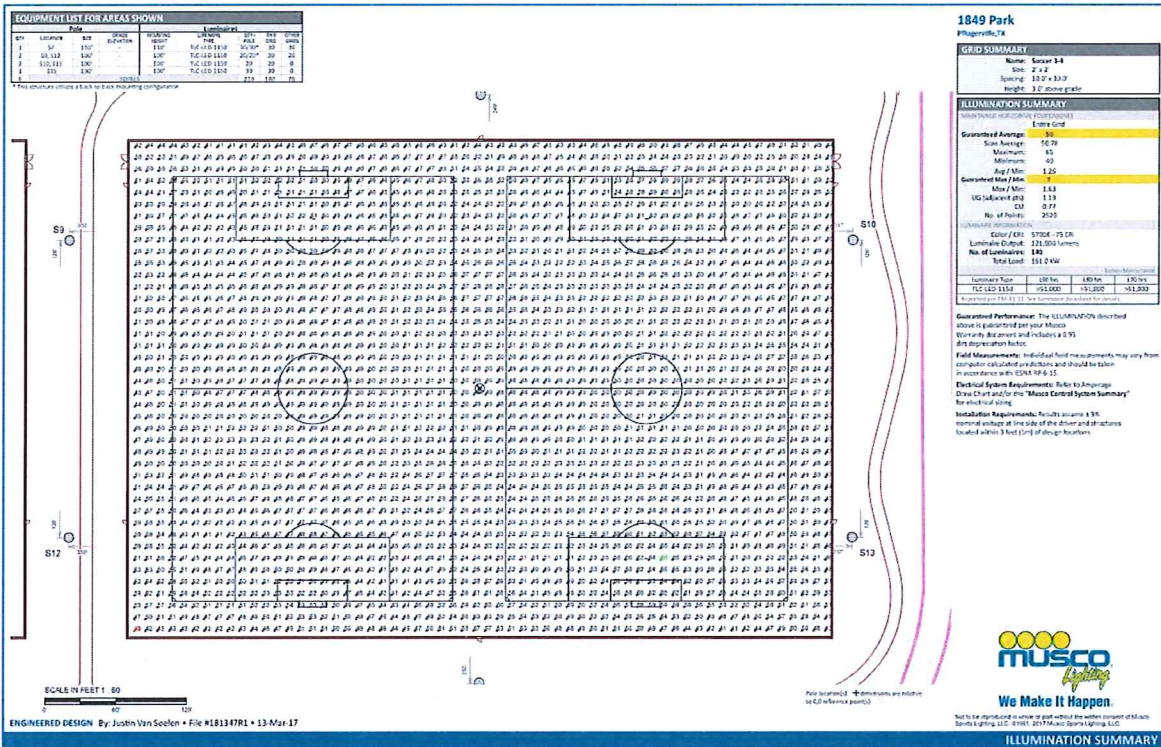
**Installation Requirements:** Fixtures assume a 3% nominal voltage at line side of the driver and structures located within a 3-foot (3') of design locations.

**MUSCO Lighting**  
We Make It Happen.

Not to be reproduced in whole or part without the written consent of Musco Sports Lighting, LLC. © 2015 Musco Sports Lighting, LLC.

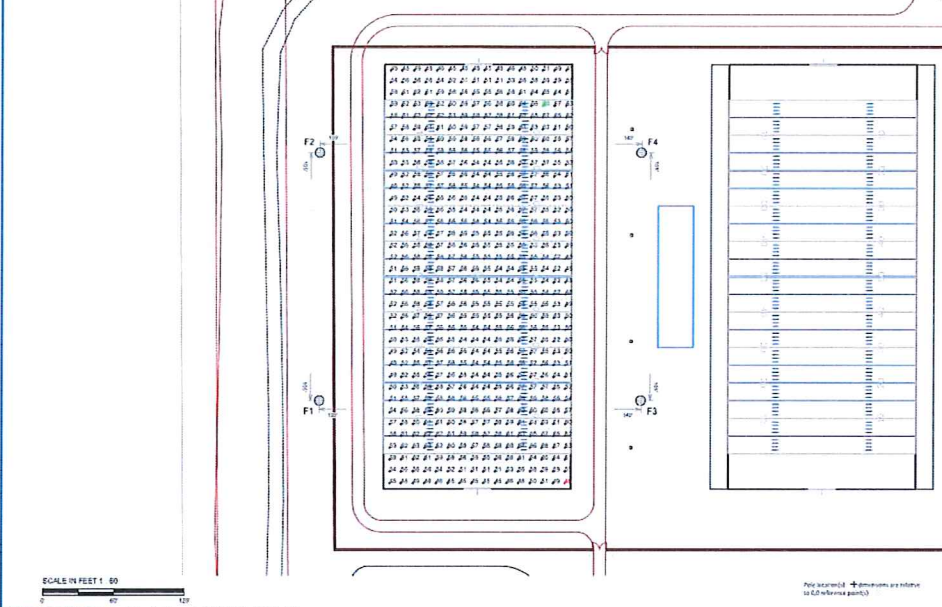
ILLUMINATION SUMMARY





EQUIPMENT LIST FOR AREAS SHOWN							
Qty	Location	Size	Model	Manufacturer	Notes	Height	Mount
1	F1	80"	27"	TC-LD-1150	15'	1	0
2	F2	80"	27"	TC-LD-1150	15'	1	0
1	F3	80"	27"	TC-LD-1150	15'	1	0
1	F4	80"	27"	TC-LD-1150	15'	1	0

This document shows a link to each mounting configuration.



SCALE IN FEET 1" = 60'

ENGINEERED DESIGN By: Justin Van Soelen • File #18134781 • 13-Mar-17

### 1849 Park

GRID SUMMARY	
Name:	Footcandle 1
Size:	80" x 150"
Spacing:	15' x 15'
Height:	15' above grade

ILLUMINATION SUMMARY	
Guaranteed Average:	1.00 fc
Scale Average:	55.95
Maximum:	64
Minimum:	45
Avg. IFC:	1.23
Guaranteed Min. IFC:	0.87
Min. IFC:	1.52
UGI Illuminance:	1.24
UGI:	0.11
No. of Fixtures:	270

**Guaranteed Performance:** The ILLUMINATION described above is guaranteed per site plan. Work only as depicted and includes a 0.95 de-rating factor.

**Field Measurements:** Individual field measurements may vary from computer calculated predictions and should be taken in accordance with IESNA 90-6-15.

**Electrical System Requirements:** Refer to Ampage Draw Chart and the "Master Control System Summary" for electrical sizing.

**Installation Requirements:** Fixtures assume a 90° nominal tilt angle at the pole of the fixture and are located within 3 feet (1m) of design locations.

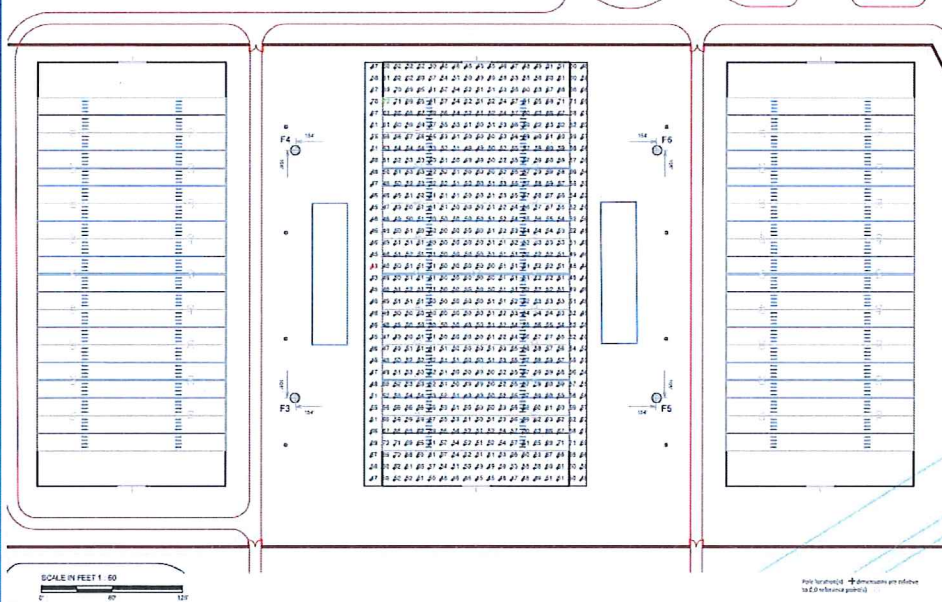
**We Make It Happen**

Not for reproduction or resale without the written consent of Musco Lighting, LLC. © 1999-2017 Musco Lighting, LLC.

ILLUMINATION SUMMARY

EQUIPMENT LIST FOR AREAS SHOWN							
Qty	Location	Size	Model	Manufacturer	Notes	Height	Mount
1	F1	80"	27"	TC-LD-1150	15'	1	0
1	F2	80"	27"	TC-LD-1150	15'	1	0
1	F3	80"	27"	TC-LD-1150	15'	1	0
1	F4	80"	27"	TC-LD-1150	15'	1	0

This document shows a link to each mounting configuration.



SCALE IN FEET 1" = 60'

ENGINEERED DESIGN By: Justin Van Soelen • File #18134781 • 13-Mar-17

### 1849 Park

GRID SUMMARY	
Name:	Footcandle 1
Size:	80" x 150"
Spacing:	15' x 15'
Height:	15' above grade

ILLUMINATION SUMMARY	
Guaranteed Average:	1.00 fc
Scale Average:	57.98
Maximum:	72
Minimum:	43
Avg. IFC:	1.23
Guaranteed Min. IFC:	0.85
Min. IFC:	1.55
UGI Illuminance:	1.24
UGI:	0.11
No. of Fixtures:	264

**Guaranteed Performance:** The ILLUMINATION described above is guaranteed per site plan. Work only as depicted and includes a 0.95 de-rating factor.

**Field Measurements:** Individual field measurements may vary from computer calculated predictions and should be taken in accordance with IESNA 90-6-15.

**Electrical System Requirements:** Refer to Ampage Draw Chart and the "Master Control System Summary" for electrical sizing.

**Installation Requirements:** Fixtures assume a 90° nominal tilt angle at the pole of the fixture and are located within 3 feet (1m) of design locations.

**We Make It Happen**

Not for reproduction or resale without the written consent of Musco Lighting, LLC. © 1999-2017 Musco Lighting, LLC.

ILLUMINATION SUMMARY

# EXHIBIT B

## 1849 Park Football and Parking

Phlegerville, Texas

### Lighting System

Pole/Fixture Summary	Pole Height	Max Height	Fixture Qty	Luminaire Type	Load	Circuit
F1	70'	35'	1	TLC-LED-550	0.54 kW	D
F2-F3	70'	35'	2	TLC-81-575	1.15 kW	A
		35'	5	TLC-LED-1200	5.85 kW	B
		35'	2	TLC-LED-550	1.08 kW	D
		22'	2	TLC-81-575	1.15 kW	A
		22'	5	TLC-LED-1200	5.85 kW	A
F4	70'	35'	1	TLC-LED-550	0.54 kW	D
		35'	5	TLC-LED-1200	5.85 kW	B
		35'	5	TLC-LED-1200	5.85 kW	C
		35'	2	TLC-LED-550	1.08 kW	D
		22'	2	TLC-81-575	1.15 kW	C
		22'	5	TLC-LED-1200	5.85 kW	C
F7-F8	70'	35'	1	TLC-LED-550	0.54 kW	D
		35'	1	TLC-LED-575	1.15 kW	C
P1-P49	30'	19'	1	Crete ODQ	0.10 kW	E
57			145		95.38 kW	

Grid	Description	Load	Fixture Qty
A	Field 1	28.00 kW	28
B	Field 2	28.00 kW	28
C	Field 3	28.00 kW	28
D	Field 4	28.00 kW	28
E	Parking	4.90 kW	49

Fixture Type Summary	Type	Source	Wattage	Lumens	LU	LD	L70	Quantity
Crete ODQ	Crete ODQ	LED 5700K - 75 CRI	100W	15,210	>120,000	>120,000	>120,000	24
TLC-81-575	TLC-81-575	LED 5700K - 70 CRI	575W	52,000	>120,000	>120,000	>120,000	60
TLC-LED-1200	TLC-LED-1200	LED 5700K - 75 CRI	1170W	150,000	>120,000	>120,000	>120,000	60
TLC-LED-550	TLC-LED-550	LED 5700K - 75 CRI	540W	67,200	>120,000	>120,000	>120,000	12

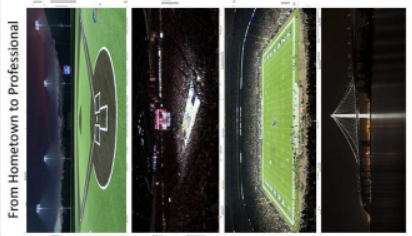
### Single Luminaire Amperage Draw Chart

Driver Specifications	Line Amperage Per Luminaire
Single Phase Voltage	240 - 250 (max draw)
Crete ODQ	0.42 (600) 0.37 (600) 0.33 (600) 0.29 (600) 0.25 (600)
TLC-81-575	3.3 (2.2) 2.9 (2.0) 2.5 (1.8) 2.1 (1.5)
TLC-LED-1200	3.2 (2.1) 2.8 (2.0) 2.4 (1.7) 2.0 (1.4)
TLC-LED-550	3.2 (3.0) 2.8 (2.4) 1.9 (1.8) 1.4

### Light Level Summary

Calculation Grid Summary	Grid Name	Calculation Metric	Avg	Min	Max	Max/Min	Avg/Min	Grids	Fixture Qty
Field 1	Field 1	Horizontal Illuminance	31.00	25.6	41.4	1.62	1.21	A	28
Field 2	Field 2	Horizontal Illuminance	31.00	25.6	41.4	1.62	1.21	B	28
Field 3	Field 3	Horizontal Illuminance	31.00	25.6	41.4	1.62	1.21	C	28
Field 4	Field 4	Horizontal Illuminance	31.00	25.6	41.4	1.62	1.21	D	28
Parking 1	Parking 1	Horizontal Illuminance	2.99	0.2	5.1	23.38	11.00	E	49
Parking 2	Parking 2	Horizontal Illuminance	2.99	0.2	5.1	23.38	11.00	E	49
Parking 3	Parking 3	Horizontal Illuminance	2.99	0.2	5.1	23.38	11.00	E	49
Walking Track 1	Walking Track 1	Horizontal	2.71	0.0	13.3	-	-	D	12
Walking Track 2	Walking Track 2	Horizontal	2.71	0.0	13.3	-	-	D	12
Walking Track 3	Walking Track 3	Horizontal	4.54	0.0	25.9	-	-	D	12

ENGINEERED DESIGN By: Ryan Wohlers • File #193849E • 22-May-24



From Hometown to Professional



We Make It Happen.

Musco Lighting is a subsidiary of Musco Industries, LLC. All rights reserved. © 2024 Musco Industries, LLC. All rights reserved.

### PROJECT SUMMARY

# 1849 Park Football and Parking

Pluegeville, Texas

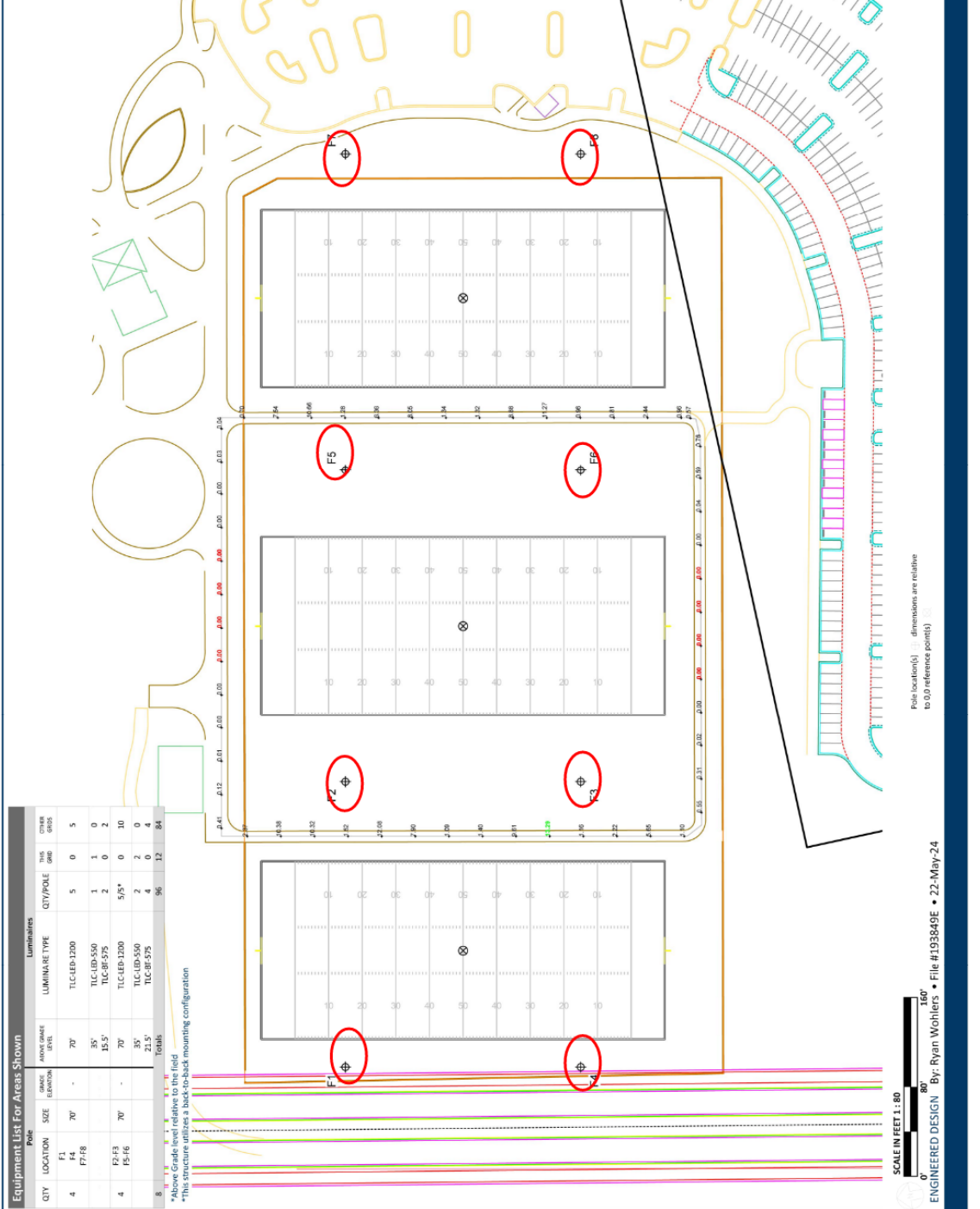
**Grid Summary**  
 News Wailing Track 1  
 Spacing: 30.0' x 10.0'  
 Height: 3.0' above grade

**Illumination Summary**  
 Entire Grid  
 Scan Average: 2.71  
 Maximum: 13.3  
 Minimum: 0.0  
 Max/Min: 0.00  
 LG (adjacent pos): 0.00  
 No. of Poles: 54  
 Applied Circuits: 0  
 Total Load: 6.48 kW

**LUMINAIRE INFORMATION**  
 No. of Luminaires: 12  
 Total Load: 6.48 kW

**Guaranteed Performance:** The ILLUMINATION described above is guaranteed per your Musco Warranty document and includes a 0.35 dirt depreciation factor.  
 All measurements were taken under worst case conditions from computer calculated predictions and should be taken in accordance with IESNA RP-6-15.  
**Electrical System Requirements:** Refer to Appendix for electrical sizing.  
**Installation Requirements:** Results assume 3% for electrical system structures located within 3 feet (1m) of design location.

**Musco Field Lighting, 12 fixtures**



**Equipment List For Areas Shown**

Pole	QTY	LOCATION	SIZE	GRADE ELEVATION	ABOVE GRADE SIZE	Luminaires		OTHER NOTES
						LUMINAIRE TYPE	QTY/POLE	
F1-F4	4	F1-F4	70"	-	70"	TLC-LED-1200	5	0
						TLC-LED-550	1	0
F5-F6	4	F5-F6	70"	-	70"	TLC-LED-1200	2	0
						TLC-LED-550	2	0
F7-F8	8	F7-F8	70"	-	70"	TLC-LED-1200	2	0
						TLC-LED-550	2	0
*This structure is a back-to-back mounting configuration. *This structure is a back-to-back mounting configuration. *This structure is a back-to-back mounting configuration. *This structure is a back-to-back mounting configuration.								



Not to be reproduced in whole or part without the written consent of Musco Sports Lighting, LLC. ©1983, 2023 Musco Sports Lighting, LLC.

**ILLUMINATION SUMMARY**

Pole location(s) dimensions are relative to 0.0 reference point(s)

SCALE IN FEET 1:80  
 0' 80' 160'

ENGINEERED DESIGN By: Ryan Wohlers • File #193849E • 22-May-24

# 1849 Park Football and Parking

Pflugerville, Texas

**Grid Summary**

Name: Walking Track 2  
 Spacing: 30.0' x 10.0'  
 Height: 3.0' above grade

**Illumination Summary**

Entire Grid  
 Spacing: 30.0' x 10.0'  
 Height: 3.0' above grade

Scan Average: 1.53  
 Maximum: 1.53  
 Minimum: 0.0  
 Avg/Min: -  
 Max/Min: -  
 UG (adjacent): 0.00  
 UG: 0.02

**LUMINAIRE INFORMATION**

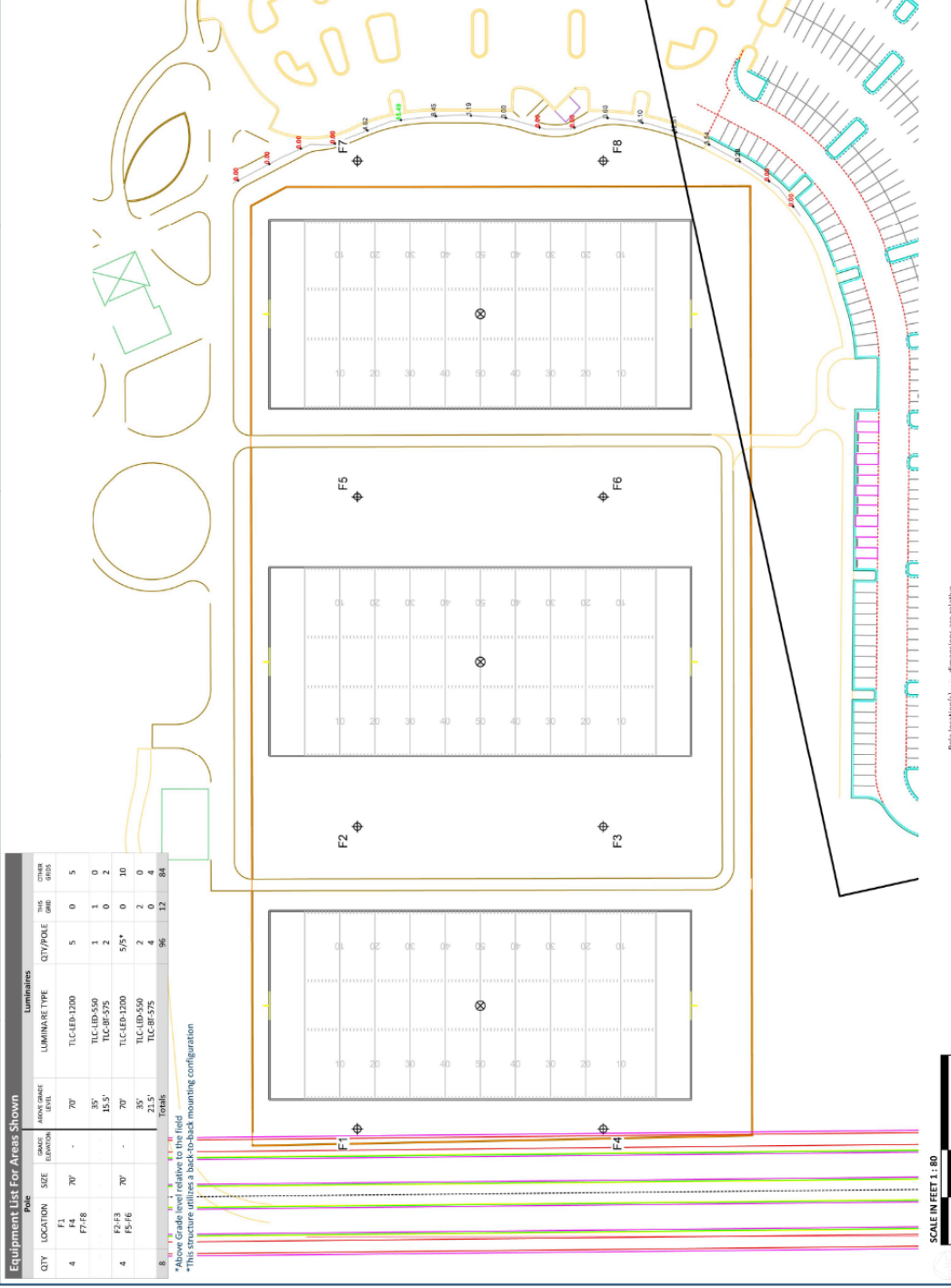
No. of Points: 18  
 No. of Luminaire: 12  
 Total Load: 6.48 kW

**Guaranteed Performance:** The ILLUMINATION described above includes a 0.35 dirt depreciation factor.

**Field Measurements:** Individual field measurements may vary in accordance with IESNA (p. 46-55).

**Electrical System Requirements:** Refer to Amperage Draw Chart and/or the "Musco Control System Summary".

**Installation Requirements:** Results assume a 3% nominal voltage at line side of the driver and structures located within 3 feet (1m) of design locations.



**Equipment List For Areas Shown**

QTY	LOCATION	SIZE	GRADE ELEVATION	LUMINAIRE TYPE	QTY/POLE	THE GRID	OTHER GRID
4	F1, F4, F7, F8	70'	70'	TLC-LED-1200	5	0	5
		35'	15.5'	TLC-LED-550	1	1	0
		70'	70'	TLC-8F-575	2	0	2
4	F2, F3, F5, F6	70'	70'	TLC-LED-1200	5/5*	0	10
		35'	15.5'	TLC-LED-550	2	2	0
		21.5'	21.5'	TLC-8F-575	4	0	4
8				Totals	96	12	84

\*Above Grade level relative to the field  
 \*This structure utilizes a back-to-back mounting configuration



Not to be reproduced in whole or part without the written consent of Musco Sports Lighting, LLC. ©1983, 2023 Musco Sports Lighting, LLC.

## ILLUMINATION SUMMARY

Pole location(s) dimensions are relative to 0,0 reference point(s)

SCALE IN FEET 1:80  
 0' 80' 160'  
 ENGINEERED DESIGN By: Ryan Wohlers • File #193849E • 22-May-24

# 1849 Park Football and Parking

Phileasville, Texas

## Grid Summary

Name: Parking 2  
 Size: 807' x 320'  
 Spacing: 10.0' x 10.0'  
 Height: 1.0' above grade

## ILLUMINATION SUMMARY

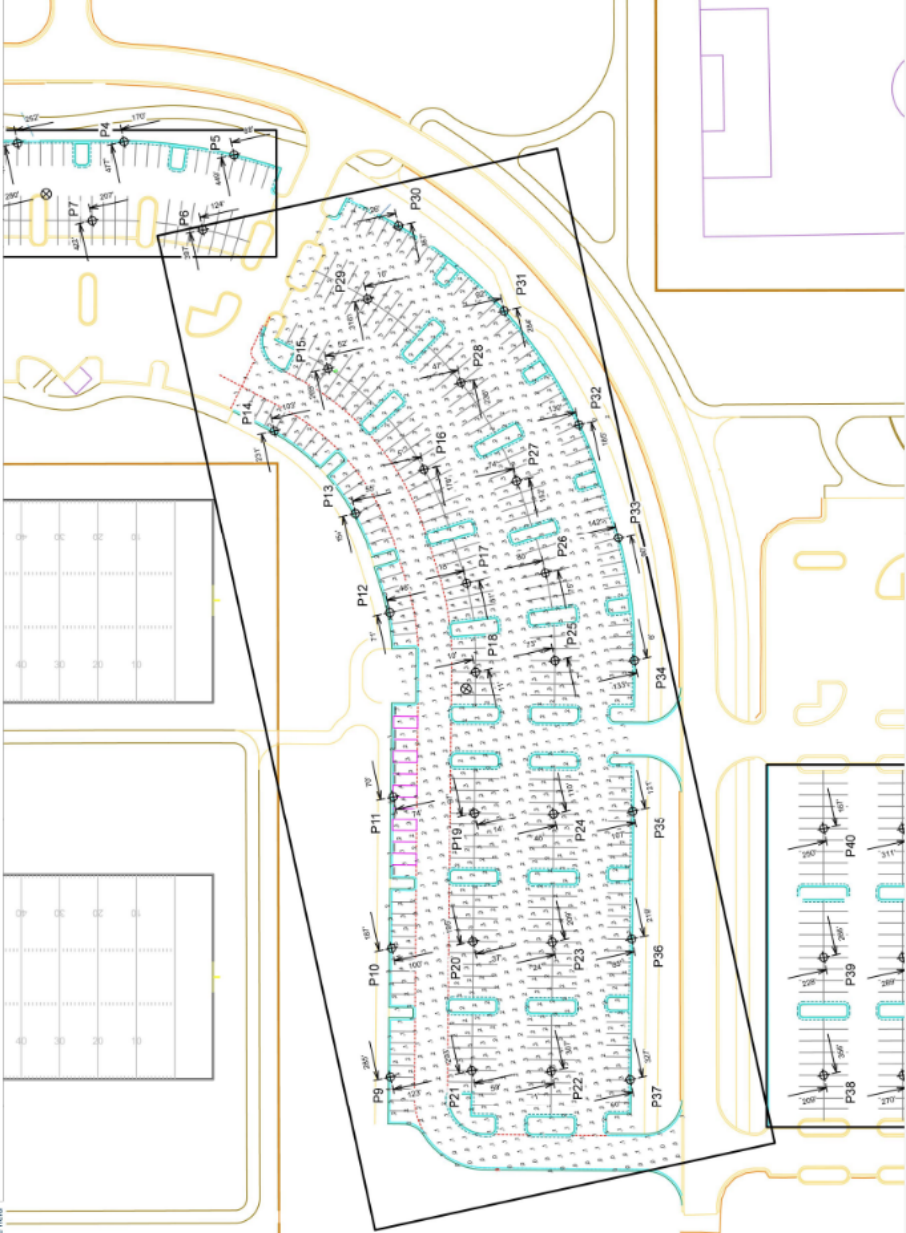
Entire Grid		WALK AREA (NON-COURT/STADIUM)	
Scan Average	2.39		
Minimum	0.2		
Maximum	11.00		
Avg/Min	23.38		
UG (dependent on CU)	0.46		
CU	1444		
No. of Points	1444		
LUMINAIRE INFORMATION			
Applied Circuits	C		
No. of Traps	49		
Total Load	4.90 kW		

**Guaranteed Performance:** The ILLUMINATION described in this document and includes a 0.95 depreciation factor.  
 Field Measurements: Field measurements may vary from in accordance with IESNA RP-6-15.  
 Electrical System Requirements: Refer to Appendix for electrical sizing. "Neutral Ground System Summary"  
 Installation Requirements: Results assume ± 3% location within 3 feet (1m) of design location.

## Equipment List For Areas Shown

Pole	Luminaires		QTY/POLE	THIS GRID	GRID
	QTY	LOCATION			
49	P1-P49	30'	1	1	0

\*Above Grade level relative to the field



SCALE IN FEET 1: 80

ENGINEERED DESIGN By: Ryan Wohlers • File #193849E • 22-May-24

Pole location(s) ⊕ dimensions are relative to 0.0' reference point(s) ⊠



Not to be reproduced in whole or part without the written consent of Musco Sports Lighting, LLC. ©2023 Musco Sports Lighting, LLC.

## ILLUMINATION SUMMARY

# 1849 Park Football and Parking

Platteville, Texas

## Equipment Layout

### INCLUDES:

- Field 1
- Field 2
- Field 3
- Parking 1
- Parking 2
- Parking 3

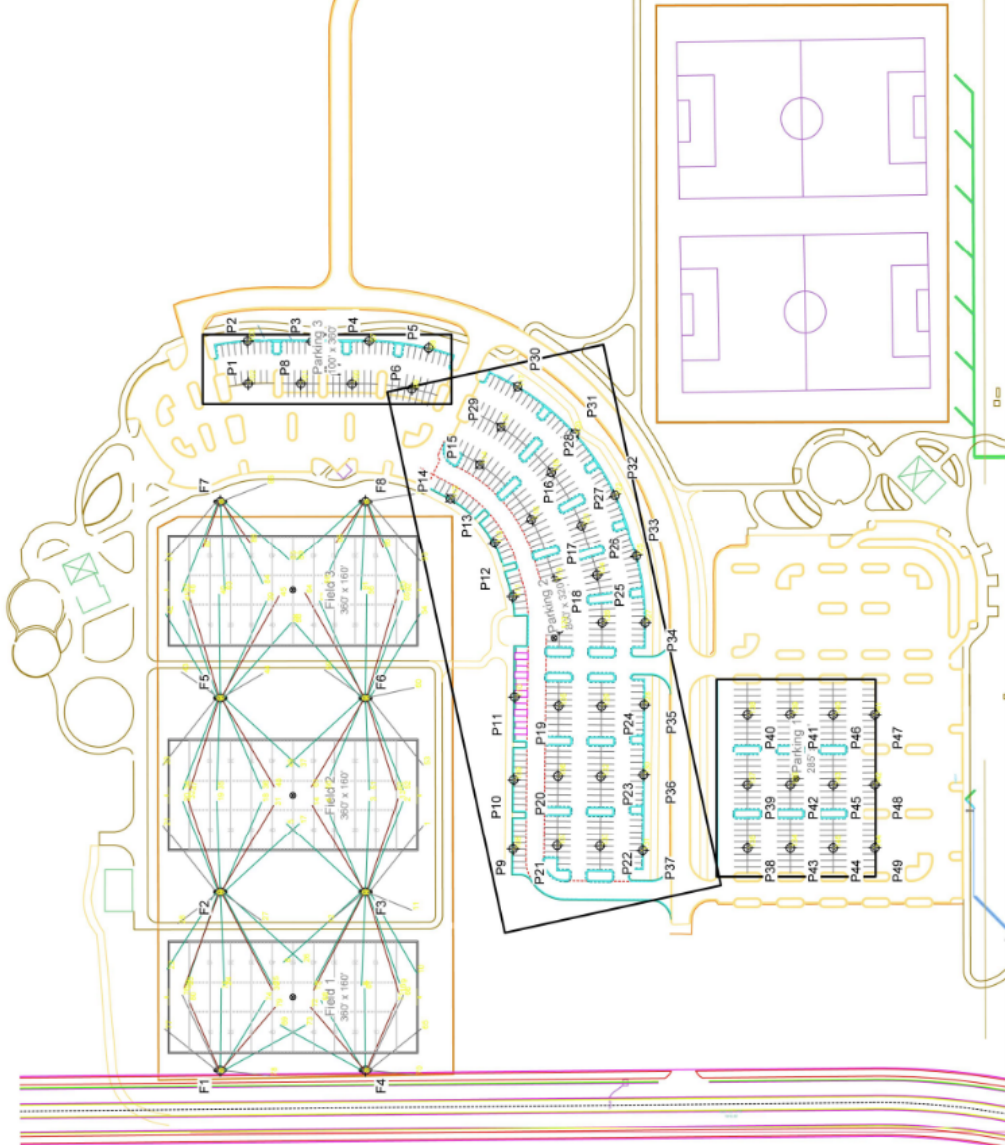
Electrical System Requirements: Refer to Ampage Summary for details.

Installation Requirements: Refer to "Musco Control System Summary" for electrical wiring.

Installation Requirements: Results assume ± 3% normal voltage at line side of the driver and structures inside within 3 feet (1m) of design locations.

### Single Luminaire Ampage Draw Chart

Driver Specifications (90 min power factor)	200' (600)	230' (600)	260' (600)	290' (600)	320' (600)	350' (600)
Single Phase Voltage	208	230	252	273	295	316
CREE OSQ	-	-	-	0.3	0.2	0.2
TLC-RF-575	3.3	3.2	2.9	2.5	2.0	1.8
TLC-RF-500	4.9	4.0	3.0	2.4	2.2	1.9
TLC-LED-500	5.2	4.0	2.8	2.4	1.9	1.8



ENGINEERED DESIGN By: Ryan Wohlers • File #193849E • 22-May-24

Pole location(s) (●) dimensions are in (x) to (y) reference points (⊗)



Not to be reproduced in whole or part without the written consent of Musco Sports Lighting, LLC. ©1981, 2023 Musco Sports Lighting, LLC.

## EQUIPMENT LAYOUT

# EXHIBIT C

## 1849 Park Phase 2

Fluoreville, TX

### Lighting System

Pole/Fixture Summary	Pole Height	Fixture Qty	Luminaire Type	Load	Circuit
A1-A2	70'	1	TLC-LED-900	0.88 kW	A
	70'	2	TLC-LED-1200	2.24 kW	A
	70'	1	TLC-LED-900	0.88 kW	B
A2-A4	70'	1	TLC-LED-900	0.88 kW	B
	70'	2	TLC-LED-1200	2.24 kW	B
A5-A6	70'	1	TLC-LED-900	0.88 kW	C
	70'	2	TLC-LED-1200	2.24 kW	C
B1-B2	16'	1	TLC-8T-575	0.57 kW	C
	70'	4	TLC-LED-1500	5.64 kW	A
B3-B4	70'	4	TLC-LED-1500	5.64 kW	B
B5-B6	70'	4	TLC-LED-1500	5.64 kW	C
	30'	1	Cree OSQ	0.10 kW	D
P1	30'	1	Cree OSQ	0.10 kW	D
P2-P7	30'	2	Cree OSQ	0.21 kW	D
P8	30'	1	Cree OSQ	0.10 kW	D
P9	30'	1	Cree OSQ	0.10 kW	D
P10	30'	1	Cree OSQ	0.10 kW	D
P11	30'	1	Cree OSQ	0.10 kW	D
P12-P15	30'	2	Cree OSQ	0.21 kW	D
P16	30'	1	Cree OSQ	0.10 kW	D
P17	30'	1	Cree OSQ	0.10 kW	D
<b>Totals</b>		<b>83</b>		<b>62.29 kW</b>	

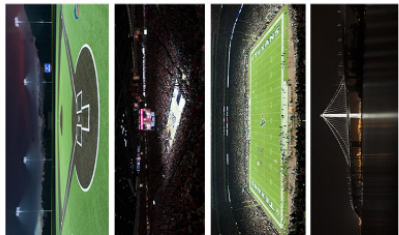
Circuit Summary	Description	Load	Fixture Qty
A	Baseball 1	20.02 kW	18
B	Baseball 2	20.02 kW	18
C	Baseball 3	20.02 kW	18
D	Parking	2.90 kW	28

Fixture Type Summary	Type	Source	Wattage	Lumens	L70	L80	L70 Quantity	L80 Quantity
Cree OSQ		LED 5700K-70 CR	100W	14,243	-	-	-	-
TLC-8T-575		LED 5700K-75 CR	575W	52,000	>120,000	>120,000	>120,000	>120,000
TLC-LED-1200		LED 5700K-75 CR	1170W	156,000	>120,000	>120,000	>120,000	>120,000
TLC-LED-1500		LED 5700K-75 CR	1410W	181,000	>120,000	>120,000	>120,000	>120,000
TLC-LED-900		LED 5700K-75 CR	880W	149,000	>120,000	>120,000	>120,000	>120,000

### Single Luminaire Amperage Draw Chart

Driver Specifications	Line Amperage Per Luminaire (30 min power factor)			
Single Phase Voltage	208	240	277	480
	(max draw)	(max draw)	(max draw)	(max draw)
CREE OSQ	1.4	1.6	1.8	3.1
TLC-8T-575	3.3	3.2	2.3	2.0
TLC-LED-1200	6.9	5.5	6.0	4.2
TLC-LED-1500	8.4	6.9	7.5	5.3
TLC-LED-900	5.3	4.3	4.3	3.1

From Hometown to Professional



We Make it Happen.

Not to be reproduced in whole or part without the written consent of Musco Sports Lighting, LLC. ©2014. 2013 Musco Sports Lighting, LLC.

## PROJECT SUMMARY

ENGINEERED DESIGN By: Ryan Wohlters • File #189167F-R1 • 25-Jul-24



# 1849 Park Phase 2

Pluggingville, TX

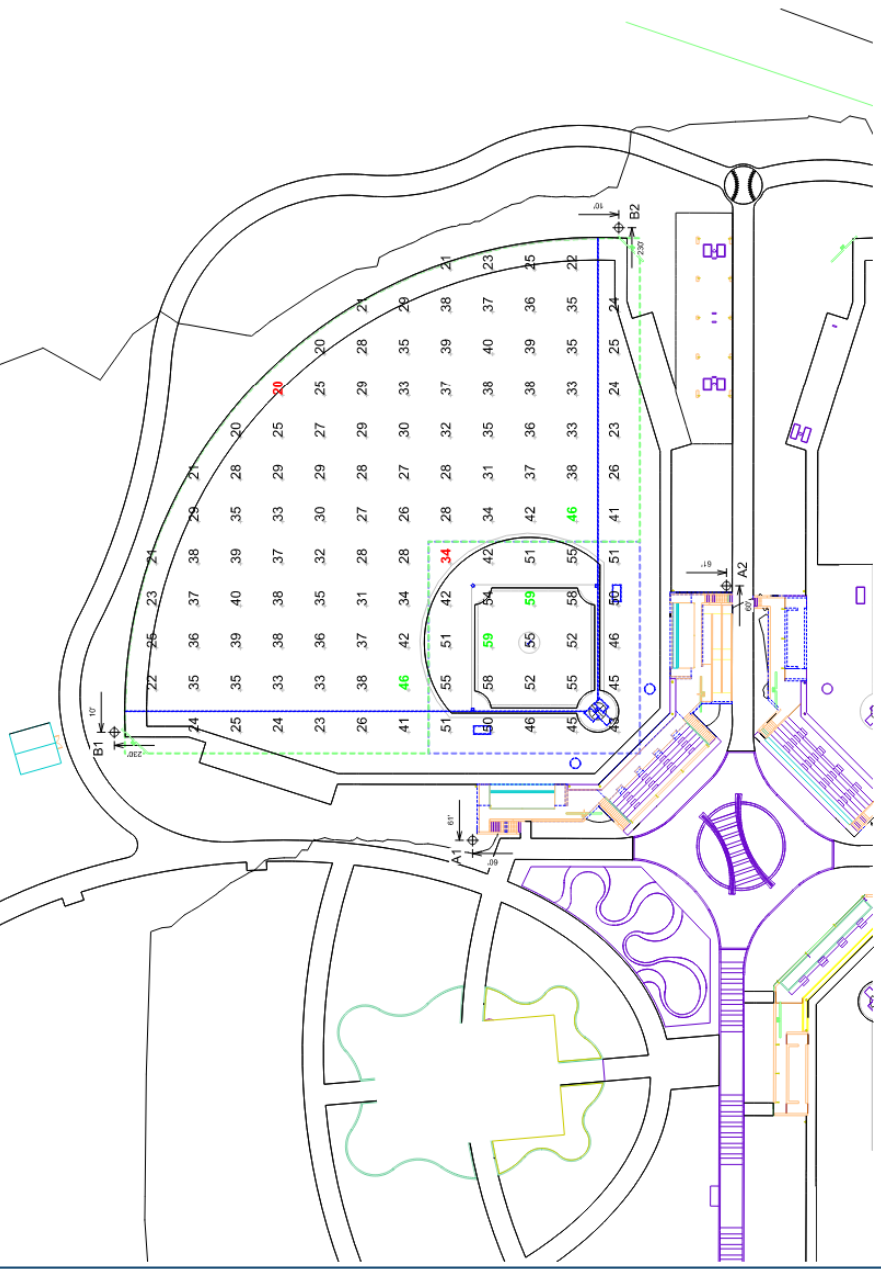
Grid Summary	
Name	Field 1
Size	225'x225'x225' - basepath 60'
Spacing	20.0' x 20.0'
Height	3.0' above grade

Illumination Summary	
Guaranteed Average	50
Scan Average	50.46
Minimum	34
Maximum	59
Avg/Min	1.50
Guaranteed Max/Min	2 / 1.56
UG Adjustment	1.75
CU	0.68
No. of Points	25
Applied Circuits	A
No. of Circuits	1
Total Load	20.02 kW

**Guaranteed Performance:** The ILLUMINATION described above is guaranteed per your Musco Warranty document and is based on the following assumptions:  
**Field Measurements:** Individual field measurements may vary from computer-calculated predictions and should be taken at the time of installation.  
**Electrical System Requirements:** Refer to Apperage Draw Chart and/or the "Musco Control System Summary" for electrical sizing.  
**Notes:** Measurements: Resists assumes a 3% nominal voltage at line side of the driver and structures located within 3 feet (1m) of design locations.

Equipment List For Areas Shown				
Pole	LOCATION	SIZE	HEIGHT	OTHER COMMENTS
2	A1-A2	70'	70'	TLC-LED-1200 1 1 1 0
2	B1-B2	70'	70'	TLC-81575 1 1 1 0
4			15.5'	TLC-LED-1500 4 4 4 0
4			30.0'	TLC-81575 1 1 1 0

\*Above Grade level relative to the field



SCALE IN FEET 1:50  
 0 50 100  
 ENGINEERED DESIGN By: Ryan Wohlers • File #189167F\_R1 • 25-Jul-24  
 Pole locations (⊕) dimensions are relative to 0.0 reference points (⊗)



Not to be reproduced in whole or in part without the written consent of Musco Sports Lighting, LLC. ©2017-2023 Musco Sports Lighting, LLC

## ILLUMINATION SUMMARY

# 1849 Park Phase 2 Pflugerville, TX

**Grid Summary**  
 Name: Grid 2  
 Size: 235'x235'x235' - hexagon 60'  
 Spacing: 20.0' x 20.0'  
 Height: 3.0' above grade

**ILLUMINATION SUMMARY**

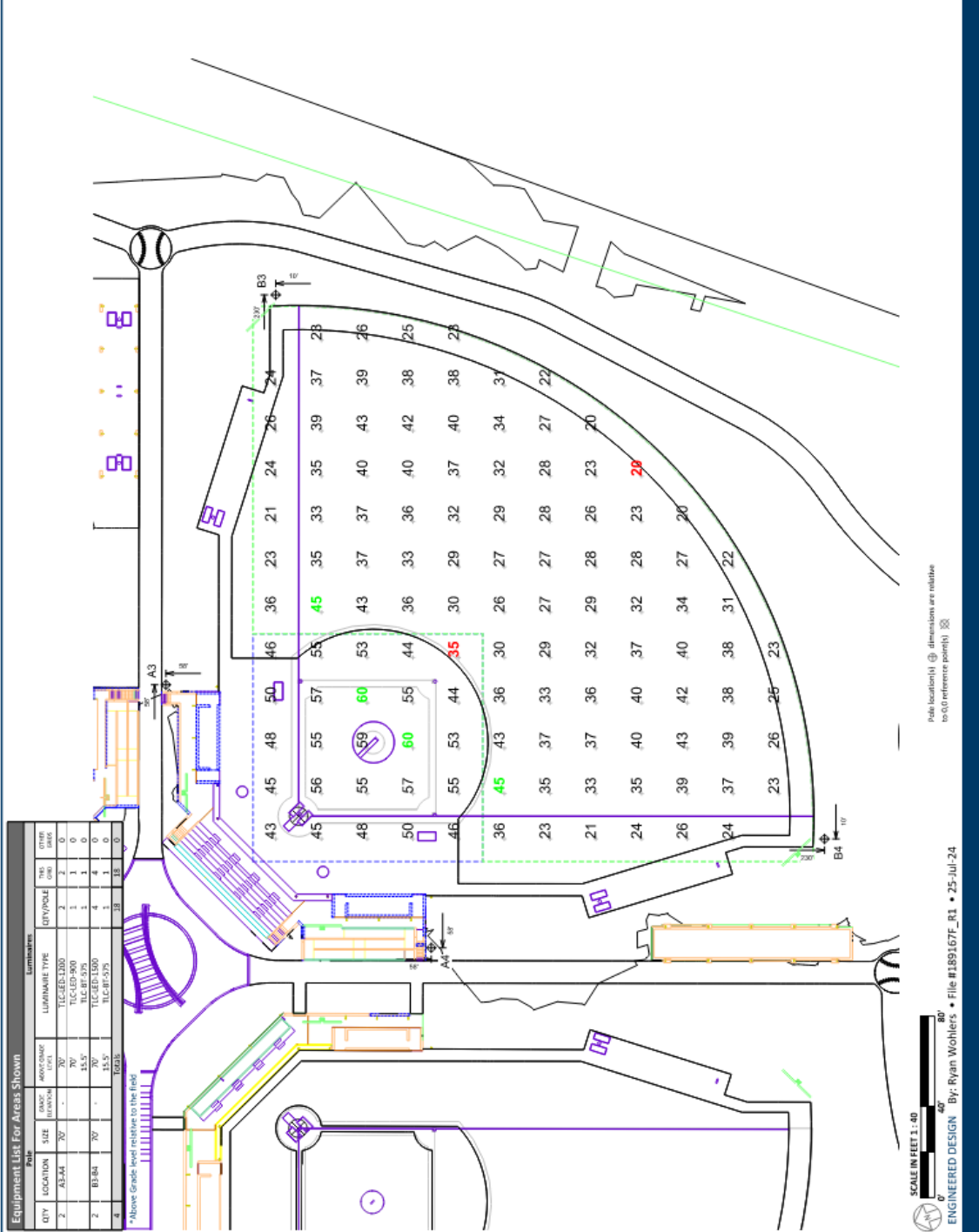
MUSCO MEDICAL INDUSTRIES	
Infield	Outfield
Guaranteed Average: 30	30
Scale Average: 50.01	21.79
Minimum: 35	20
Avg/Min: 1.47	1.61
Guaranteed Min/Max: 25	25
Max/Min: 1.74	2.28
US (epc) Power: 0.88	1.09
No. of Points: 25	91
No. of Structures: 0	0
No. of Lampposts: 18	0
Total Load: 20.02 MW	

**Guaranteed Performance:** The ILLUMINATION described above includes a 0.25' air depreciation factor and includes a 0.25' air depreciation factor.

**Field Measurements:** Individual field measurements may vary from computer-calculated predictions and should be taken on-site.

**Electrical System Requirements:** Refer to Amperage Draw Chart and/or the "Musco Control System Summary" for details.

**Field Measurements:** Results assume a 3% nominal voltage at line side of the meter and structures located within 3 feet (1m) of design locations.



**Equipment List For Areas Shown**

QTY	LOCATION	SIZE	MANUFACTURER	LUMINAIRE TYPE	QTY/VOL	TYPE	OTHER
2	A3-A4	70"	TIC-LED-1500	TIC-LED-900	2	0	
2	B3-B4	70"	TIC-LED-1500	TIC-LED-900	2	0	
4		70"	TIC-LED-1500	TIC-LED-900	4	0	
4		70"	TIC-LED-1500	TIC-LED-900	4	0	

\*Above Grids level relative to the field

SCALE IN FEET 1:40  
 0' 20' 40'  
 ENGINEERED DESIGN By: Ryan Wohlers • File #189167F\_R1 • 25-Jul-24  
 Note location(s) (Ⓧ) dimensions are relative to (0) reference point(s) (Ⓧ)

**MUSCO Lighting**  
 We Make It Happen.  
 Musco Lighting is a registered trademark of Musco Sports Lighting, LLC. ©2024. All rights reserved.

## ILLUMINATION SUMMARY

# 1849 Park Phase 2 Pflugerville, TX

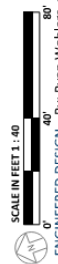
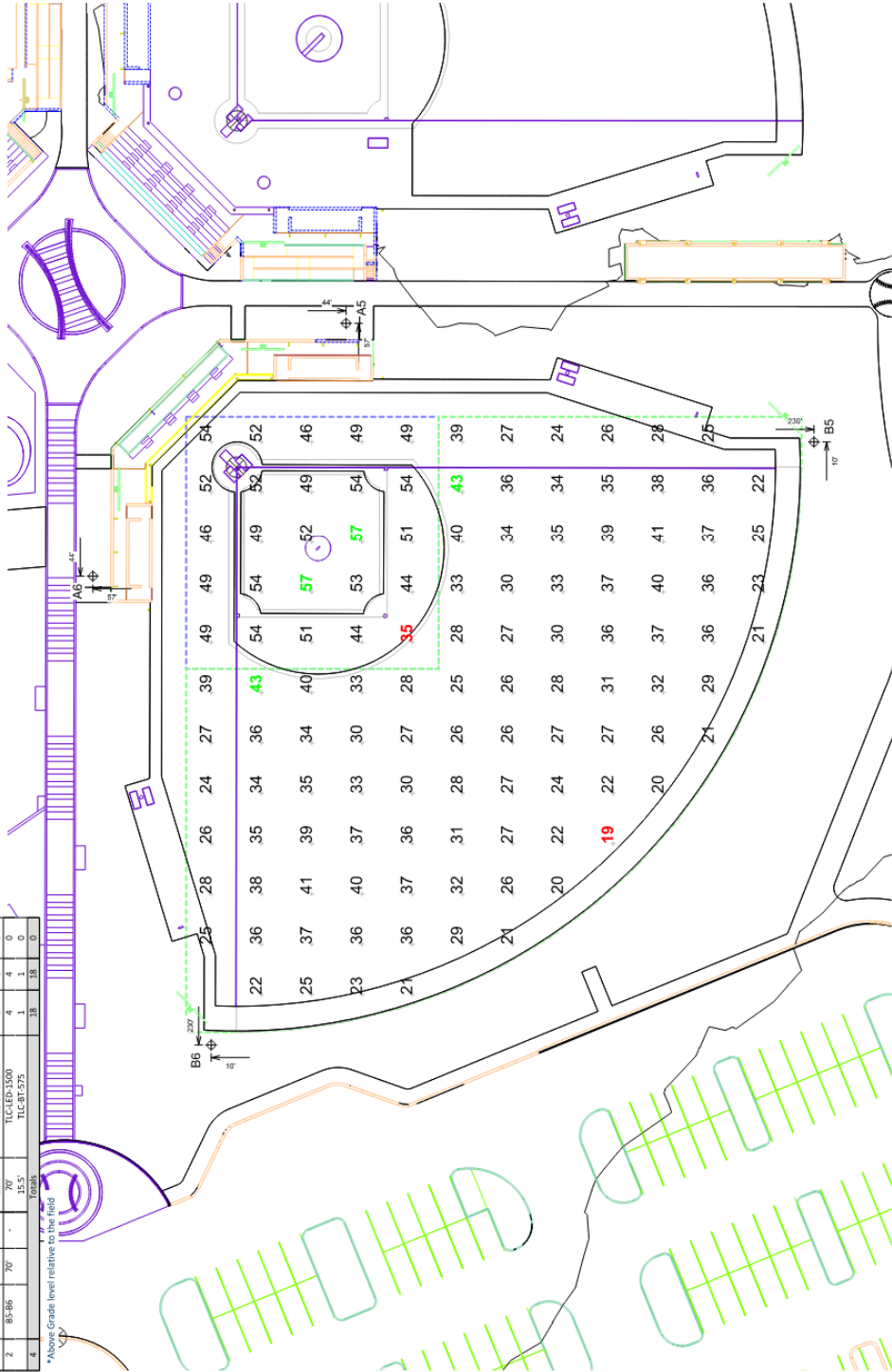
**Grid Summary**  
Name: Field 3  
Size: 235' x 225' / 235' - basepath 60'  
Spacing: 20.0' x 20.0'  
Height: 3.0' above grade

Illumination Summary	
Guaranteed Average	30
Scan Average	30.15
Minimum	19
Avg./Min	1.45
Guaranteed Max/Min	2 / 1.60
Max/Min	2.27 / 1.67
UG (adjacent to)	CU 0.87
LUMINAIRE INFORMATION	
No. of Points	25
Applied Circuits	C
No. of Total Load	18
	20.02 MW

**Guaranteed Performance:** The ILLUMINATION described above is guaranteed by your Musco Veracity document and is based on the following assumptions:  
**Field Measurements:** Individual field measurements may vary from computer-calculated predictions and should be taken at the time of installation.  
**Electrical System Requirements:** Refer to Amperage Draw Chart and/or the "Musco Control System Summary" for electrical sizing.  
**Installation Requirements:** Results assume a 3% normal voltage at line side of the driver and structures located within 3 feet (1m) of design locations.

Equipment List For Areas Shown				
QTY	LOCATION	SIZE	LUMINAIRE TYPE	QTY/POLE
2	A5-A6	70"	TLC-LED-1200	2
1		70"	TLC-LED-900	1
1		15.5"	TLC-ET-575	1
4	B5-B6	70"	TLC-LED-1500	4
1		15.5"	TLC-ET-575	1
Totals				18

\*Above Grade level relative to the field



ENGINEERED DESIGN By: Ryan Wohlers • File #189167E\_R1 • 25-Jul-24

Pole location(s) (⊕, dimensions are relative to 0.0 reference point(s)) (⊗)



**We Make It Happen.**

Not to be reproduced in whole or part without the written consent of Musco Sports Lighting, LLC. ©1981, 2023 Musco Sports Lighting, LLC.

## ILLUMINATION SUMMARY

# 1849 Park Phase 2

Plugarville, TX

## Grid Summary

Name	Value
Size	250' x 650'
Spacing	20.0' x 20.0'
Height	3.5' above finish

## ILLUMINATION SUMMARY

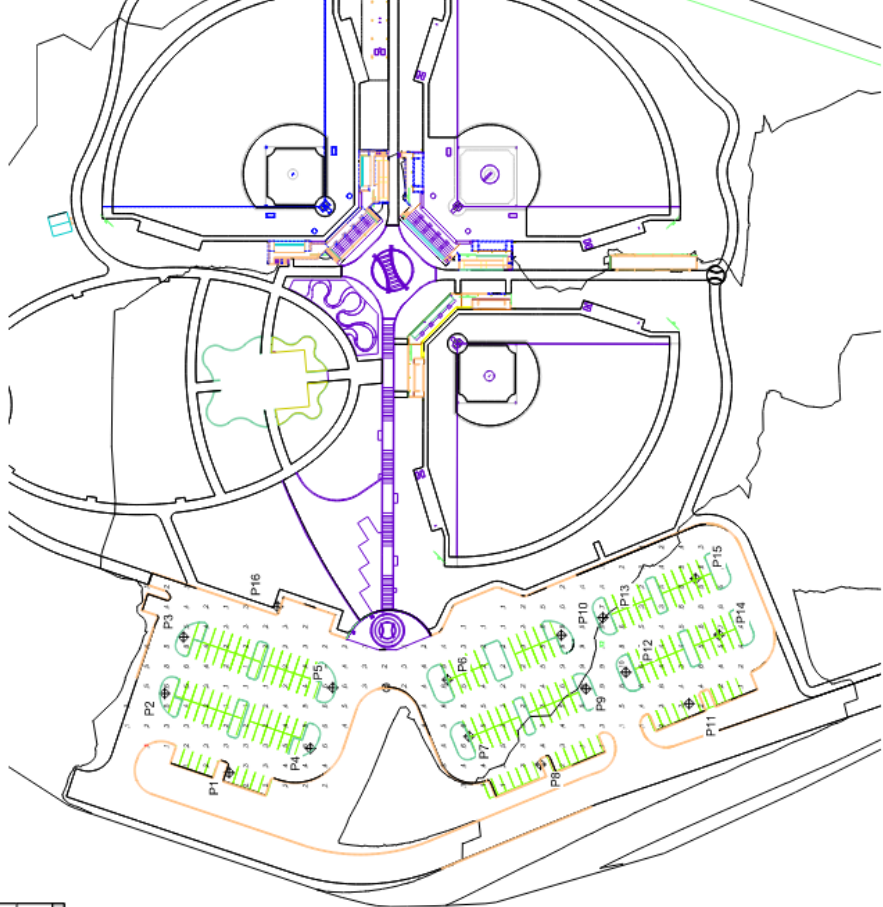
Category	Value
Spot Average	1.7
Minimum	1
Maximum	3.2
Avg Min	6.30
Max	11.1
UG (adjunct grid)	4.12
UG (adjunct)	0.84
No. of Luminaire	248
LUMINAIRE IDENTIFIERS	D
No. of Luminaire	28
Total Load	2.50 kW

**Guaranteed Performance:** The ILLUMINATION described above is guaranteed per your Musco contract, which includes a 5% drift depreciation factor.

**Field Measurements:** Individual field measurements may vary from the above values. Measurements should be taken in accordance with IESNA RP-31.

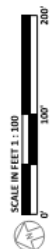
**Electrical System Requirements:** Refer to Appendix for electrical wiring the "Musco Control System Summary"

**Installation Requirements:** Results assume a 3% nominal voltage drop and use of the appropriate structures based on the site and type of design conditions.



QTY	LOCATION	SIZE	MOUNTING LEVEL	LUMINAIRE TYPE	LUMINAIRE	
					QTY/POLE	OTHER QTY
4	P1	30'	30'	CREE OSO	1	0
12	P9-P10	30'	30'	CREE OSO	12*	0
12	P11-P15	30'	30'	CREE OSO	12*	0
					28	0

\*This fixture utilizes a back-to-back mounting configuration



ENGINEERED DESIGN By: Ryan Wohlers • File #189167F\_R1 • 25-Jul-24

Point location(s) ⊕ dimensions are relative to 6D reference point(s) ⊗



Not to be reproduced in whole or part without the written consent of Musco Sports Lighting, LLC. ©1981-2023 Musco Sports Lighting, LLC.

## ILLUMINATION SUMMARY

# 1849 Park Phase 2

Pluggedville, TX

## Equipment Layout

### Includes:

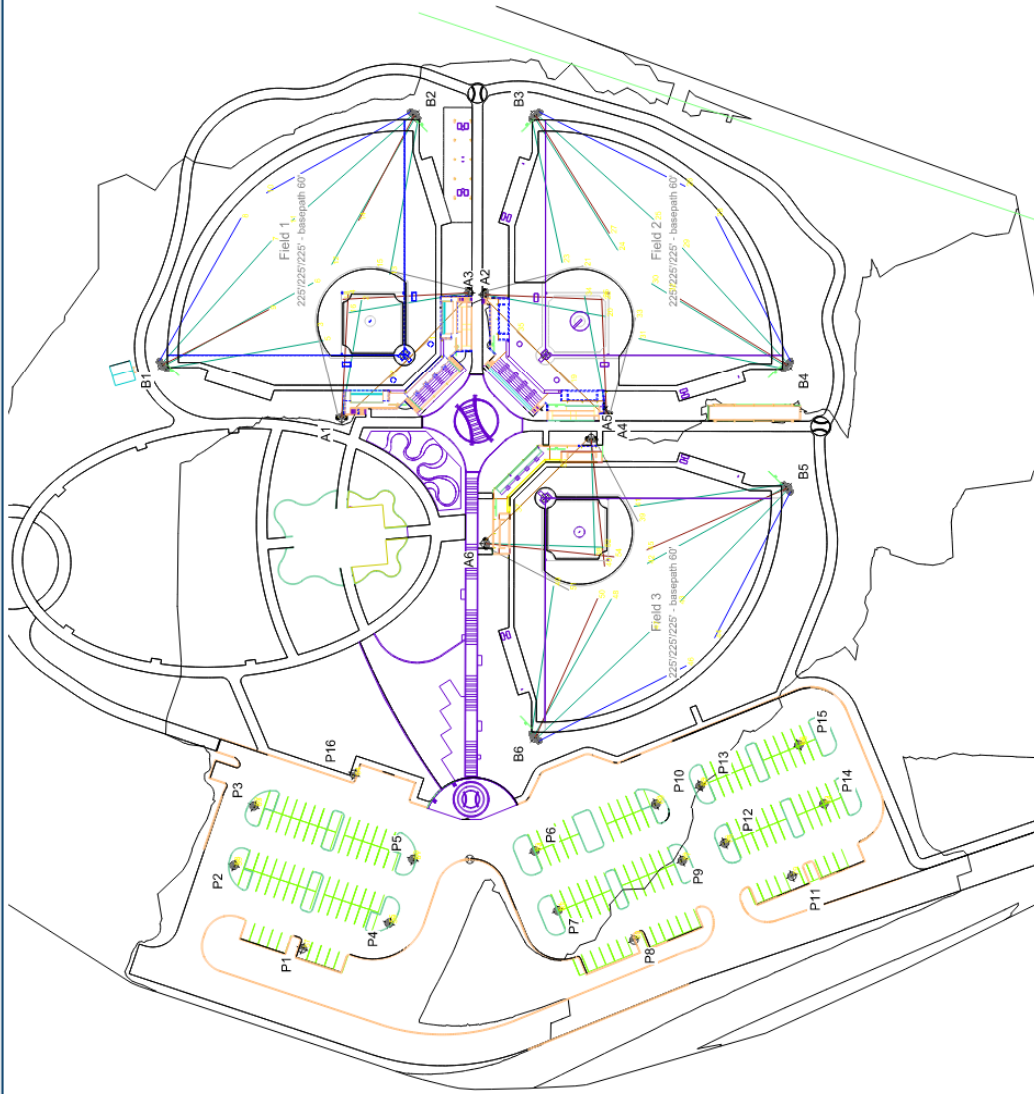
- Field 1
- Field 2
- Field 3
- Parking

### Electrical System Requirements:

Refer to Amperage Draw Chart and/or the "Musco Control System Summary" for electrical sizing.

Notes: Results assume a 3% nominal voltage at line side of the driver and structures located within 3 feet (1m) of design locations.

Single Luminaire	Amperage	Draw Chart	Line Amperage	Per Luminaire	(max draw)
208	220	240	277	380	480
(60)	(60)	(60)	(60)	(60)	(60)
TLC-LED-525	3.3	3.2	2.9	2.0	1.8
TLC-LED-525	6.9	6.5	6.0	5.2	4.2
TLC-LED-1000	8.4	7.9	7.3	6.3	5.0
TLC-LED-1500	12.6	12.0	11.2	9.5	7.5
TLC-LED-2000	16.8	16.0	15.0	12.7	10.0



SCALE IN FEET 1:100

ENGINEERED DESIGN By: Ryan Wohlers • File #19167F\_R1 • 25-Jul-24

Pole location(s) ⊕ dimensions are relative to 0.0 reference point(s) ⊠



We Make It Happen.

Not to be reproduced in whole or part without the written consent of Musco Sports Lighting, LLC. ©2023, 2024 Musco Sports Lighting, LLC.

## EQUIPMENT LAYOUT