

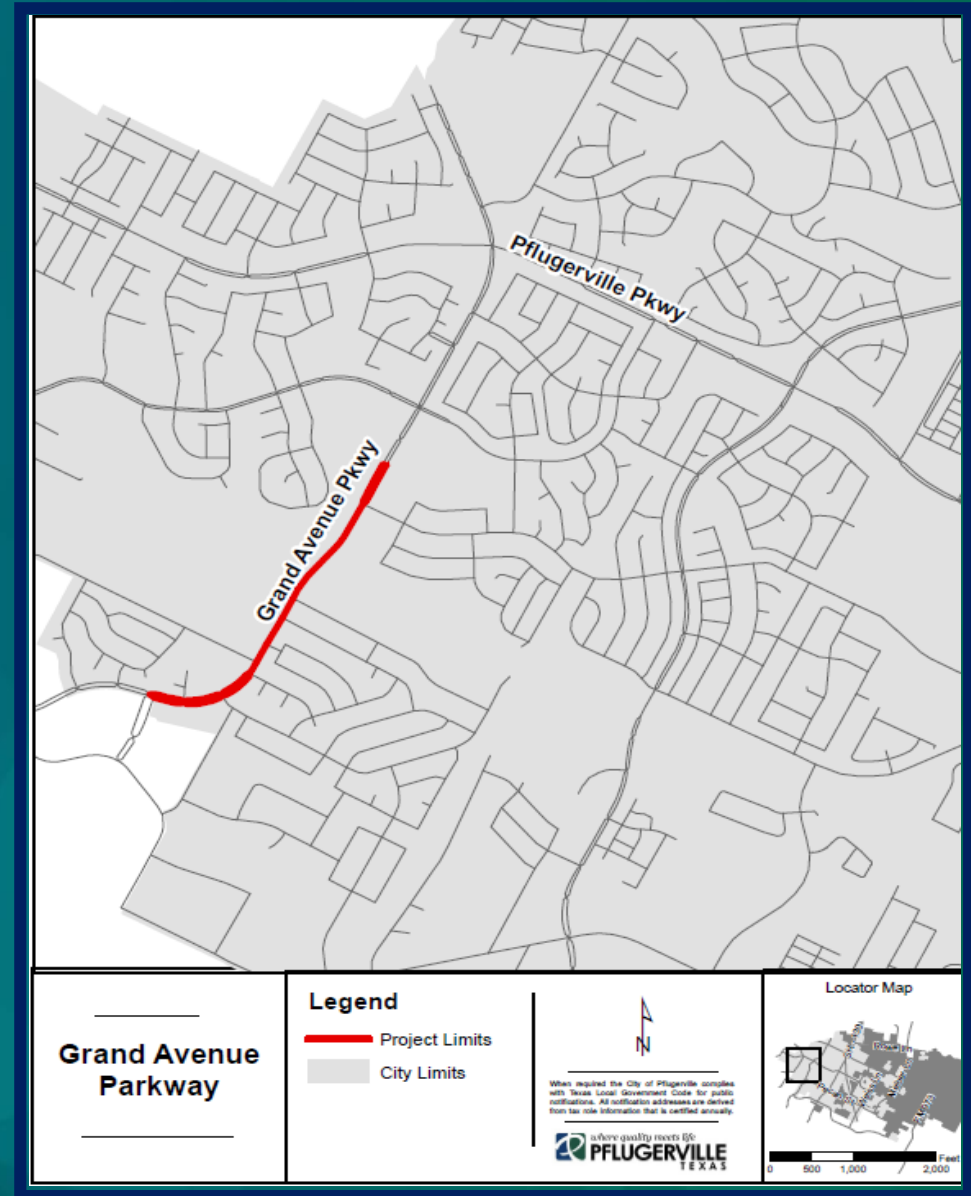
2021-0264

Approving a Professional Services Supplemental Agreement with Kimley-Horn and Associates in the amount of \$198,614.14 for professional engineering services associated with the Grand Avenue Parkway Pavement Repair Project and authorizing the City Manager to execute the same.



Background

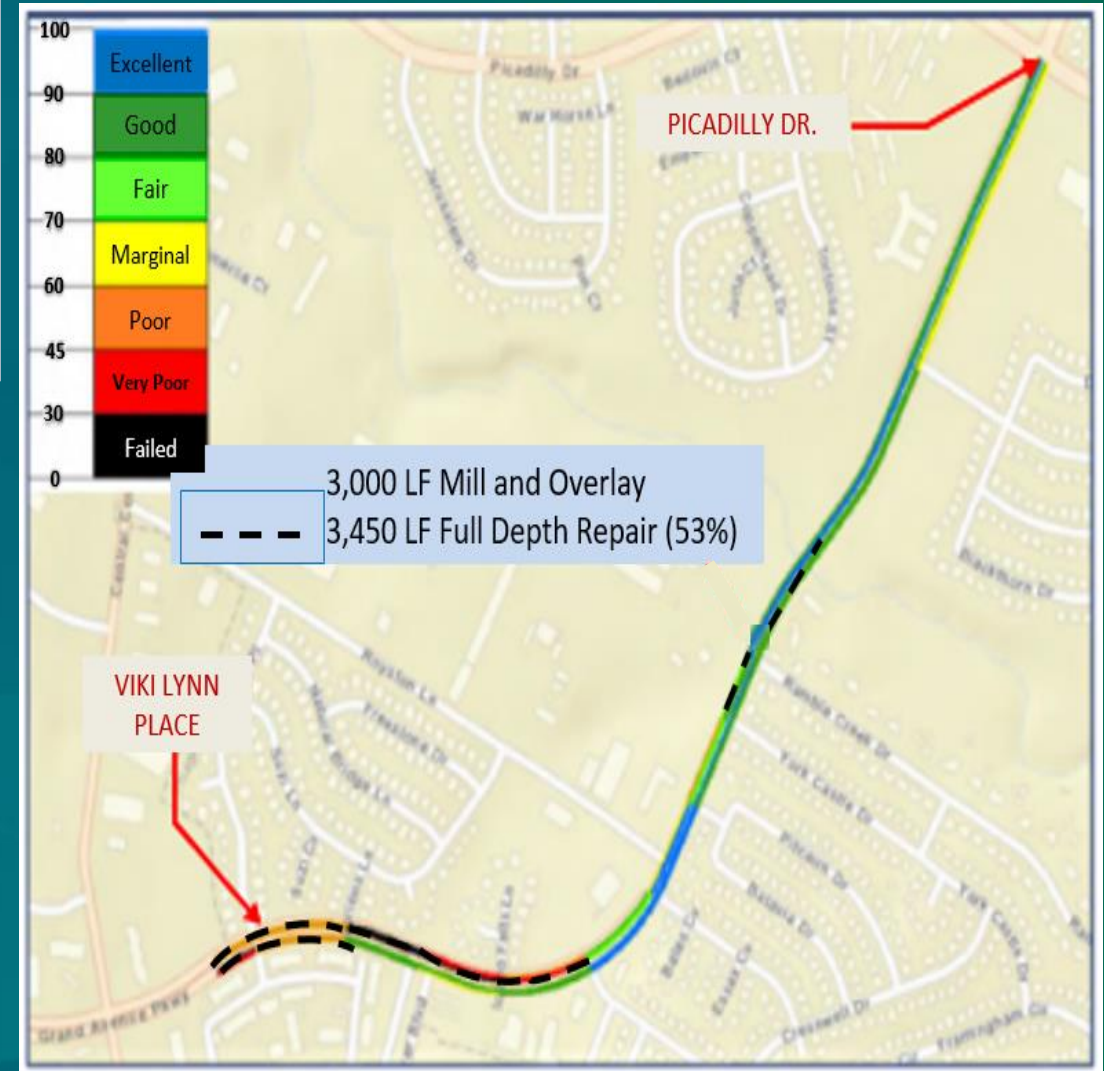
- Grand Avenue Parkway was reconstructed in 2017 for pavement repairs, from approximately Viki Lynn Pl. to Picadilly Dr.
- Pavement failures and distress areas have occurred along the project limits following the 2017 reconstruction
- An initial Pavement Distress Evaluation was performed in April 2019 to evaluate pavement condition, identify root cause of pavement failure, and provide pavement rehabilitation options



Scope of Services

- Project Management
- Subsurface Utility Engineering (SUE)
- Final Roadway Design
- Bidding Phase Services
- Construction Phase Services

- Pavement Repair Option for Failures and distress
- City consideration factors:
 - ▶ Design Cost
 - ▶ Design Duration
 - ▶ Construction Cost
 - ▶ Construction Duration
- Target July 2021 Advertise/Bid for Construction
- Recommend proceed with Design Engineering Professional Services Supplemental Agreement contract



Staff Recommendation

Staff recommends approving a professional services agreement with Kimley-Horn in the amount of \$198,614.14 for professional engineering services associated with the Pavement and Infrastructure Maintenance Projects for Grand Avenue and authorizing City Manager to enter into negotiations regarding a scope of work and fee proposal.

