



2019 City of Pflugerville Resident Survey

Center for Research, Public Policy and Training

Texas State University

Thomas Longoria, Ph.D.

Texas State University

TI28@txstate.edu

Table of Contents

Executive Summary	3
Key Indicators Snapshot	5
Quality of Life, Mobility, and Service Indicators	10
Walking and Biking	29
Programs and Facilities Utilization	31
Media Use	33
Contact with City and Satisfaction with Contact	38
Perceptions of Safety	41
Value for Taxes Paid	43
Statistically Significant Differences by Respondent Characteristics	45
Selected and Self-Reported Resident Priority Issues	51
Respondent Demographic Characteristics Geographic Location of Respondents	59
Appendix A: Full-Text of Open-Ended Responses	65

Executive Summary

The questionnaire was mailed to a random sample of 2,000 households from April to May of 2019. The response rate for the random sample survey was 11% (225 returned surveys). Based on the response rate, we can be 95% certain that the results for the questions reflect the views of Pflugerville households with a margin of error of +/- 6.5%. In other words, if 80% of residents who say that the quality of an indicator is good or excellent, we can be 95% certain that the true value is between 73.5% and 86.5%.

In addition, a link to an open survey was also made available to the public. Because the demographics of the randomly selected respondents and the online participants were statistically similar, they were merged in this report. When responses are compared by survey mode (random versus open survey), there are statistically significant differences in 11 of 42 key service satisfaction indicators (26%). The majority of these differences are related to mobility (9 of 11) suggesting that traffic and streets were on the mind of residents when they elected to respond to the open survey. When all the responses to the survey are merged, the total number of respondents (n=578) results in a margin of error of +/- 4%. Because these open survey responses include an unknown percentage of multiple responses from a single household, a margin of error of +/- 5% is a reasonable estimate for the merged sample.

The survey is generally representative of households in Pflugerville when the demographics of the survey respondents are compared to 2018 American Community Survey Data from the US Census. For example, in 2018, an estimated 22% of occupied housing units in Pflugerville have a Hispanic head of household according to the US Census, 14% of the survey respondents (random and open survey merged), and 11% of random sample respondents indicated that they were of Hispanic origin. There are two exceptions: (1) Renters are underrepresented. The estimated percentage of renter-occupied housing in Pflugerville is 22% compared to 8% of the respondents who indicated that they rent in the random sample and 7% in the merged sample; (2). The random sample overrepresents residents over the age of 55. This is not surprising when one remembers that younger people are less oriented to mailed paper surveys. The merged survey provides a better reflection of residents by age categories. For example, according to the US Census, 4% of Pflugerville residents are 75 years old or older compared to 10% of the respondents to the mail survey and 4% of the respondents in the merged survey.

It is important to note that the responses reflect respondent perceptions. These perceptions should not be mistaken for objective "reality." Perceptions are formed in the context of expectations that people have for the quality of public services in Pflugerville. For example, waiting three minutes to get through an intersection may be perceived to be an excessive amount of time by people expecting small town traffic. The same three minutes may not be noticed by people expecting rush hour traffic for a growing community in a booming metro area. Residents with higher levels of family income may report less satisfaction with employment opportunities because one of the members of the household would like to work close to home or have employment opportunities for a child. The results should be used to inform discussions and frame questions for city officials to consider when trying to understand their citizenry better.

Two contrasts are presented in the report below to provide additional insights:

- Contrast #1: Comparison to a common benchmark
- Contrast #2: Comparison across demographic categories

Contrast #1: Summary of Comparison to Benchmarks

The responses for the merged data are examined in more detail below in the Key Indicators Snapshot. Pflugerville met or exceeded the benchmark for quality provision in 27 of 57 indicators examined. Pflugerville approached benchmark in 22 of the 57 indicators. In other words, ***Pflugerville exceeds or approaches benchmarks for quality provision of services for 86% of the indicators.***

Contrast #2: Comparisons Across Demographic Categories

Differences in responses were examined for six different demographic categories including: income, age, race, gender, homeownership, and the number of years living in Pflugerville. In general, there are few statistically significant differences in the views of Pflugerville residents when they are divided into different demographic categories. For the merged sample, 33 statistically significant differences were found out of 294 statistical tests (42 indicators * 7 demographic categories). In other words, ***in 89% of the cases, the views of Pflugerville residents are not associated with demographic characteristics and are statistically indistinguishable.*** Focusing on those cases where there are differences can be illuminating.

The full results are presented in the report below. Highlights include:

- Men are less satisfied with city appearance (beautification and code compliance) than women
- Non-white residents are less satisfied with recreation programs and value for taxes paid than white (Anglo) residents
- Longer-term residents are less satisfied with neighborhood quality and code compliance
- Homeowners are less satisfied with city beautification and value for taxes paid
- Higher-income residents are less satisfied with the PAWS shelter and dog park facilities

Key Indicators Snapshot

Percent of Respondents with Good or Excellent Perceptions by Survey Item

The following tables present the percent of respondents who indicated that they perceived the service, program, or level of safety as good or excellent. The key indicators are reported for the random sample and the merged sample. A city where 80% of the respondents rate the item as good or excellent can be considered meeting benchmarks. Taking into account the margin of error for the random sample (+/- 6.5% rounded up to +/- 7%), 73% good or excellent is potentially 80% (73% + 7%). Taking into account the margin of error for the merged sample (+/- 5%), 75% good or excellent is potentially 80% (75% + 5%). The legend below presents a quick guide for understanding the findings.

Legend			Random Sample	Merged Sample
	Benchmark	Interpretation	Percent Good or Excellent	Percent Good or Excellent
Green	80%+	Meeting benchmarks	73% +	75%+
Yellow	60% - 79%	Approaching benchmarks	53%-72%	55%-74%
Red	<60%	Below benchmarks	<53%	<55%

Satisfaction with Citizen-Initiated Contacting

	Random Sample		Merged Responses
Courteousness	96	Courteousness	92
Your overall interaction	93	Your overall interaction	88
How quickly responded	92	Accuracy of info or assistance given	85
Accuracy of info or assistance given	91	Ease to contact	84
Ease to contact	89	How quickly responded	84
How well the situation was handled	88	How well the situation was handled	82

Perceptions of Safety

	Random Sample		Merged Responses
In your home	95	In your home	96
City festivals or events	88	Neighborhood (day)	91
Neighborhood (day)	88	City festivals or events	90
Shopping area parking lots	83	Downtown Pflugerville	82
Downtown Pflugerville	80	Shopping area parking lots	78
Trails and open spaces	79	Neighborhood (after dark)	77
Lake Pflugerville	76	Trails and open spaces	76
Neighborhood (after dark)	75	In city parks	75
In city parks	73	Lake Pflugerville	62

Protective Services

	Random Sample		Merged Responses
Travis County ESD	92	City police	91
City police	91	Travis County ESD	90
Municipal court	87	Municipal court	83
Traffic enforcement	79	Traffic enforcement	72

Quality of Life

	Random Sample		Merged Responses
Overall quality of life	86	Overall quality of life	84
Neighborhood quality	83	Neighborhood quality	81
City beautification	66	City beautification	60
Value for taxes paid	57	Value for taxes paid	59
Employment opportunities	52	City planning and vision	44
City planning and vision	51	Employment opportunities	43

Public Services

	Random Sample		Merged Responses
Garbage collection	92	Garbage collection	89
Recycling	86	Recycling	84
City wastewater service	84	City wastewater service	82
City water service	77	City water service	79
Trail and sidewalk maintenance	75	Stormwater management	73
Stormwater management	74	Trail and sidewalk maintenance	70
Building permits and inspections	74	Building permits and inspections	67
Code compliance	66	Code compliance	62
Street lighting	66	Street lighting	59
Street repair	56	Street repair	48
Traffic signal timing	55	Traffic signal timing	47

Programs and Facilities

	Random Sample		Merged Responses
City library facility	92	City library facility	93
City library programs	92	City library programs	92
City recreation programs	79	City recreation programs	73
PAWS	77	PAWS	72
Events/festivals	70	Events/festivals	70
City recreation facility	70	City recreation facility	65
Aquatic programs	63	PAWS facility	61
PAWS facility	62	Aquatic programs	60
City Hall	60	Aquatic facility	55
Aquatic facility	59	Services to Youth	53
Services to Youth	57	City Hall	52
Services to Seniors	54	Dog Park	52
Dog Park	53	Services to Seniors	51
Community garden	51	Community garden	48

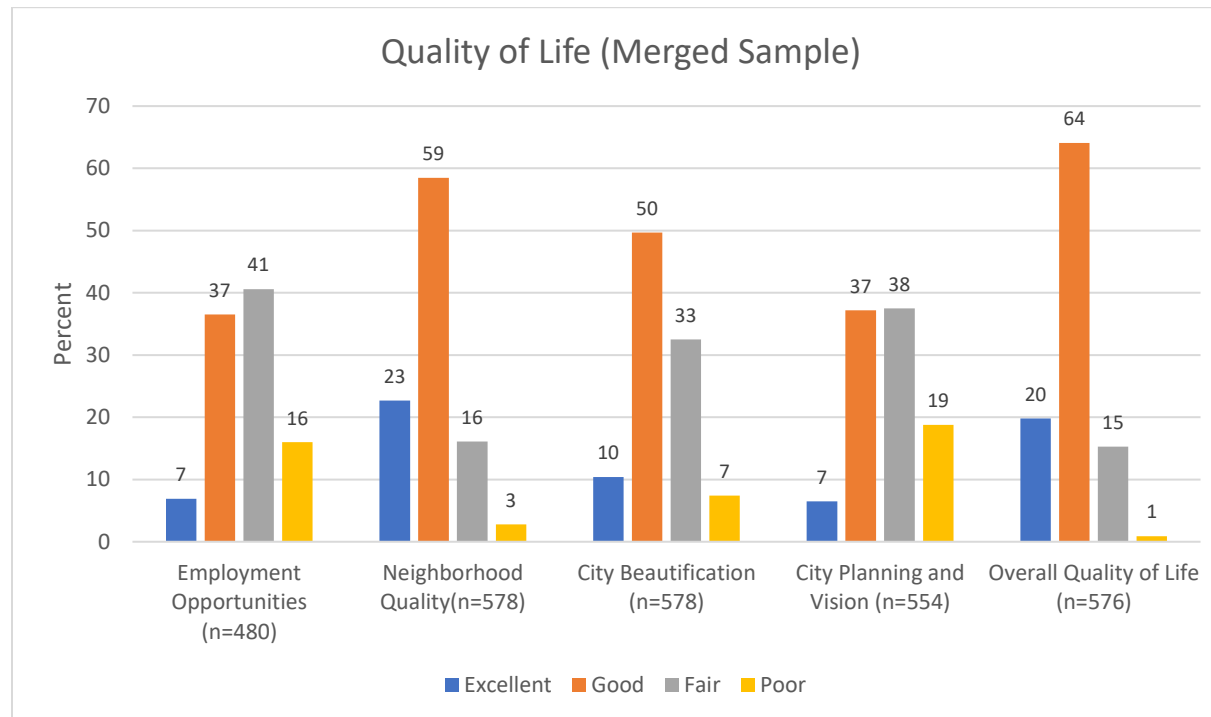
Mobility, Traffic, and Streets

	Random Sample		Merged Responses
Walking for fun	85	Walking in your neighborhood	85
Walking in your neighborhood	83	Walking for fun	79
Biking for fun	79	Biking for fun	73
Biking in your neighborhood	73	Biking in your neighborhood	72
Traffic flow on major streets	36	Traffic flow on major streets	27
Traffic flow through intersections	32	Amount of downtown parking	25
Amount of downtown parking	26	Traffic flow through intersections	24

Quality of Life, Mobility, and Service Indicators

Quality of Life

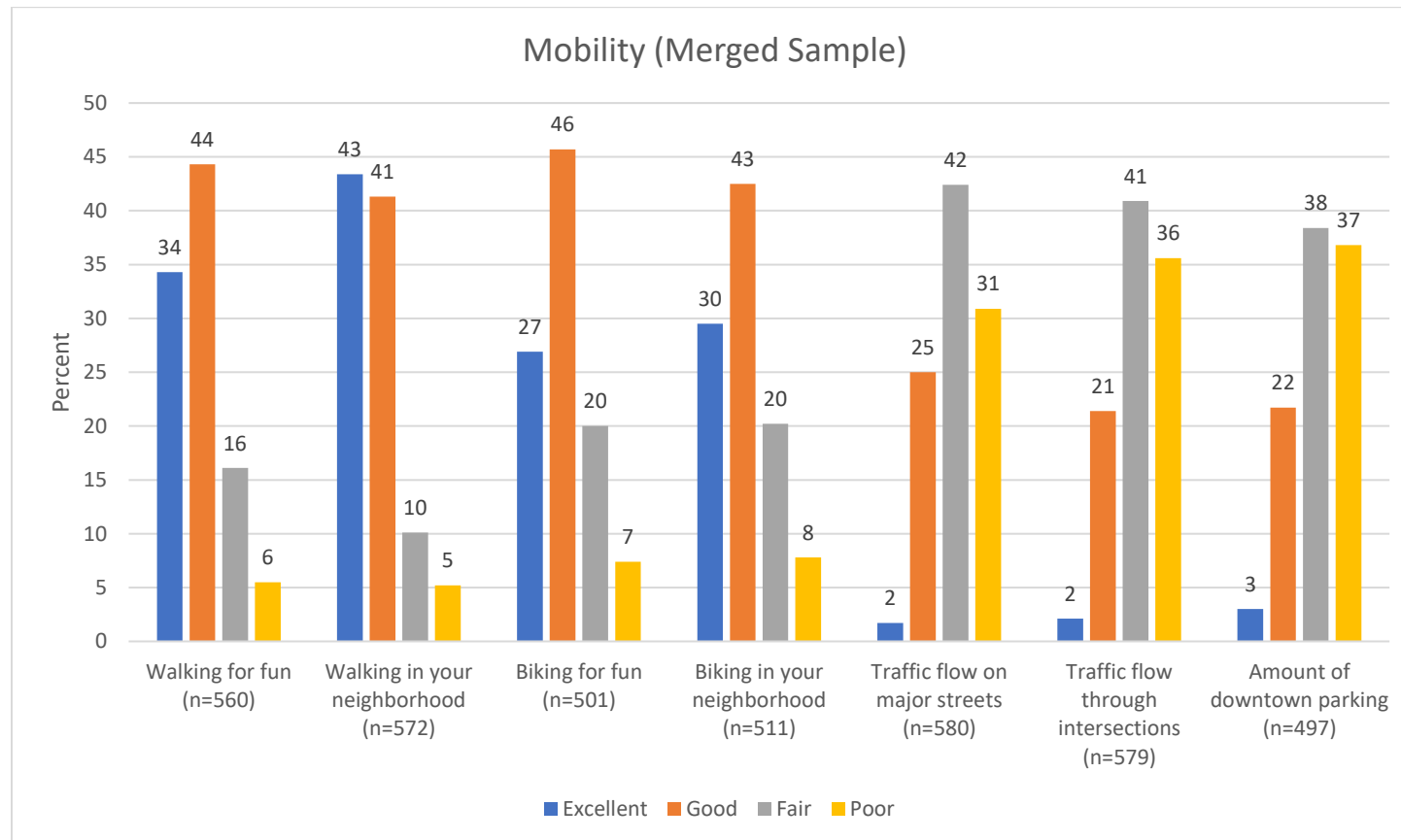
Eighty-four percent of the respondents reported the “overall quality of life” as good or excellent. The results suggest some concern with “city planning and vision” (57% indicate good or excellent). These concerns are logical given that Pflugerville is a rapidly growing city and is dealing with related challenges such as traffic that impact the everyday lives of residents. Residents likely link city planning to traffic congestion.

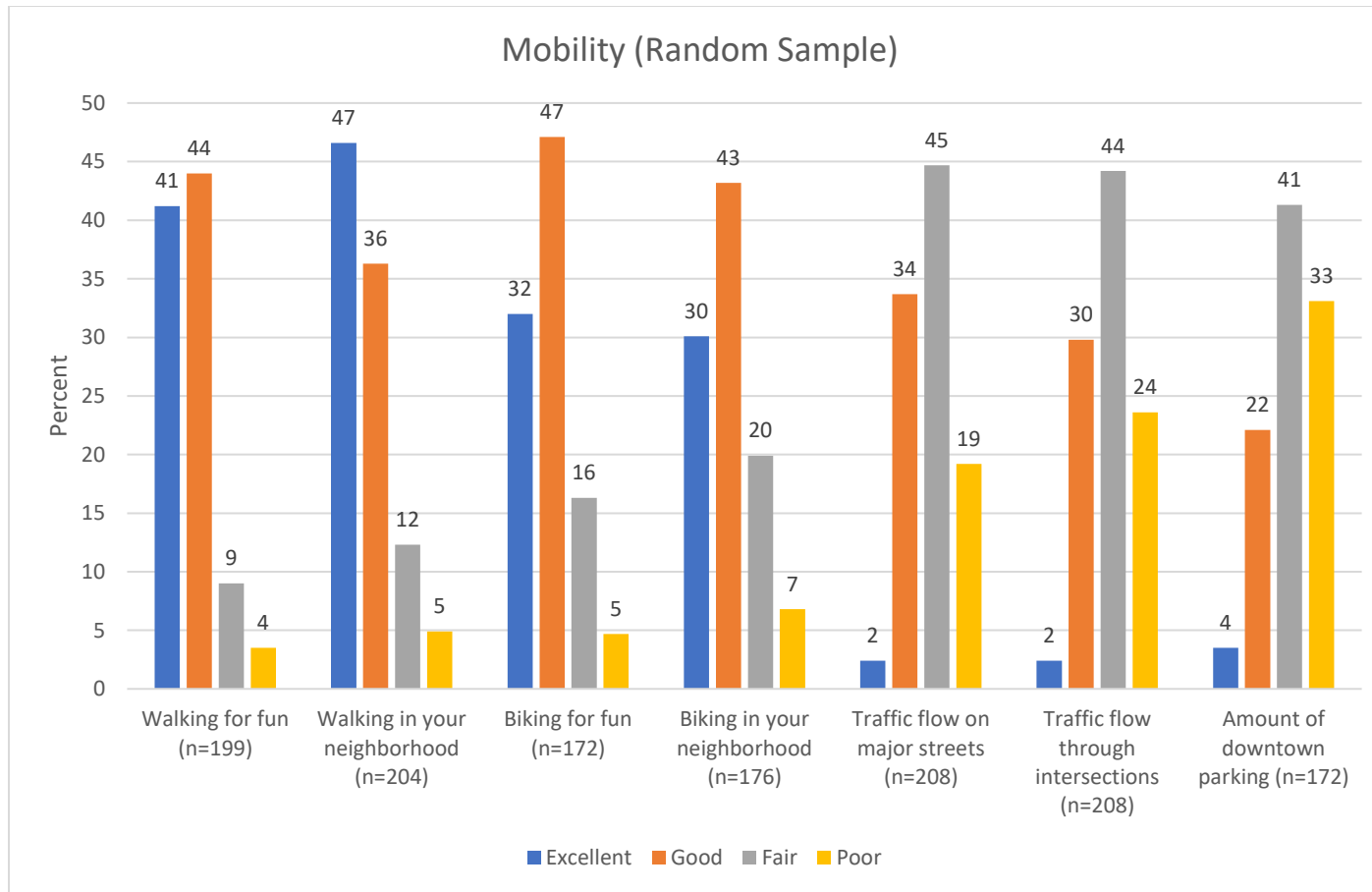




Mobility

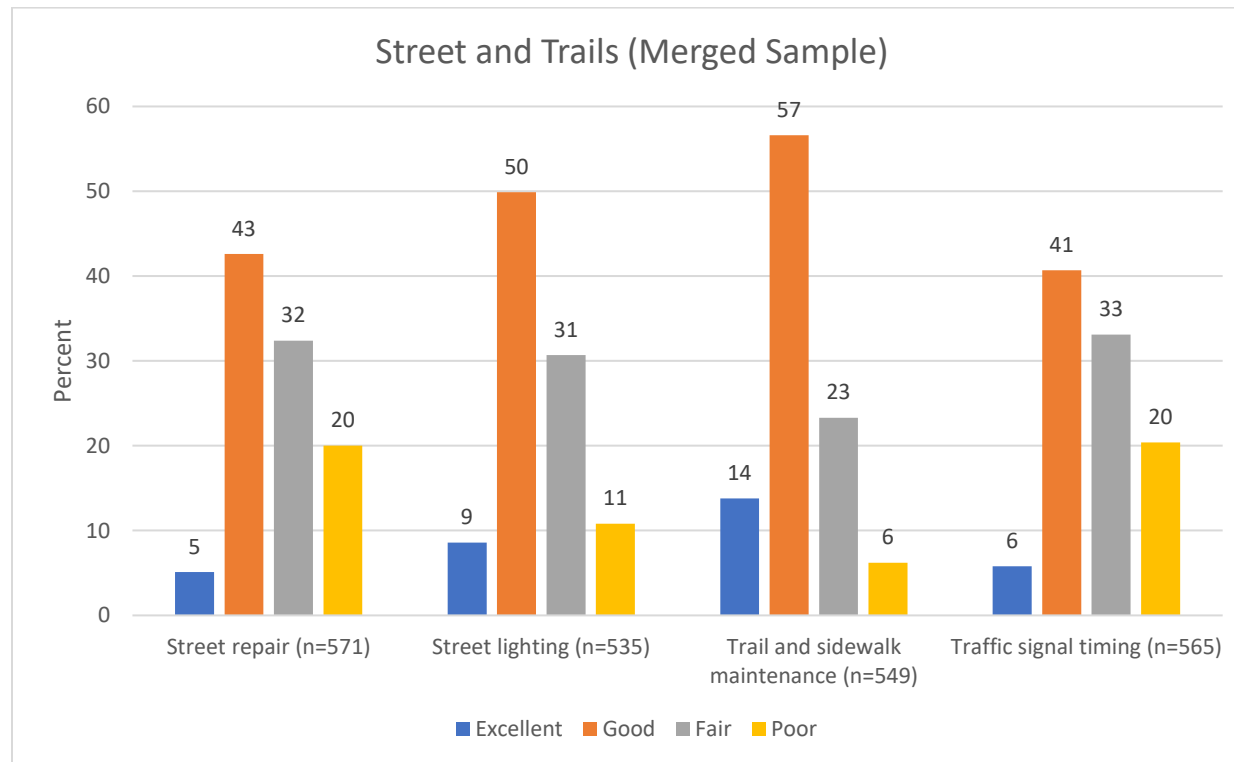
A majority of the survey respondents rate traffic flow through major streets and through intersections as fair or poor. This finding can be observed in other communities in the metro area. While satisfaction with automobile traffic is a concern, respondents report satisfaction with walking and biking that either approach or exceed benchmarks.

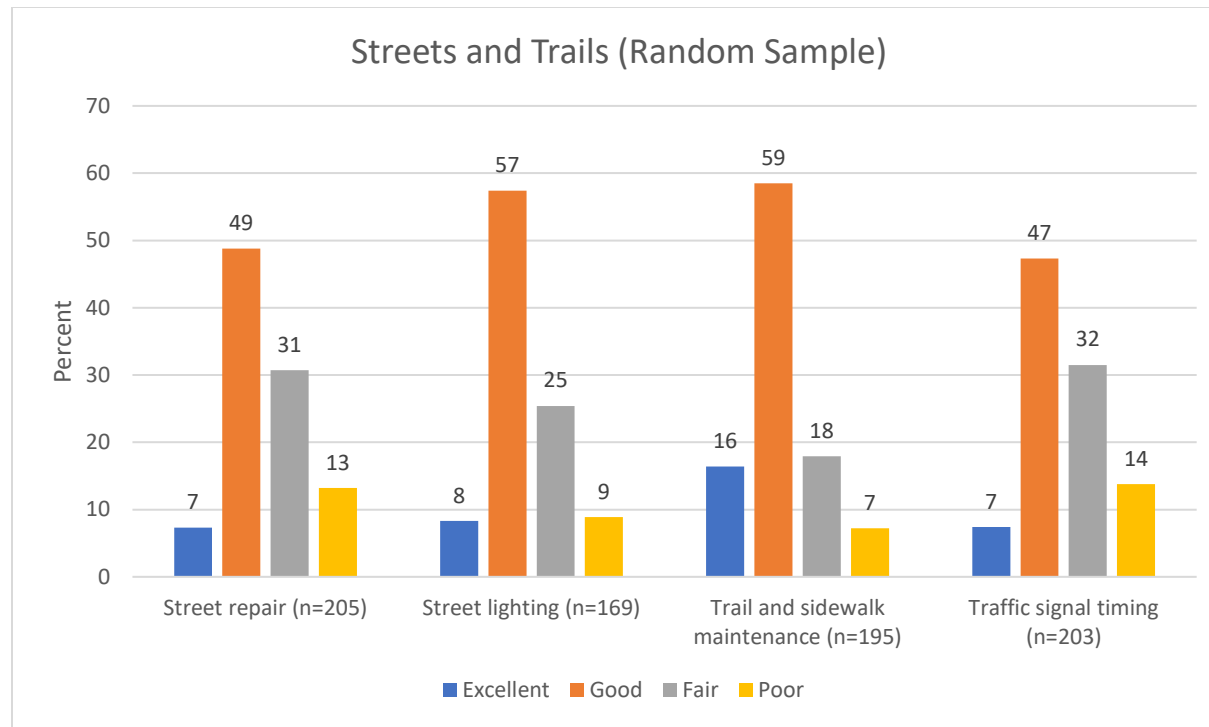




Streets and Trails

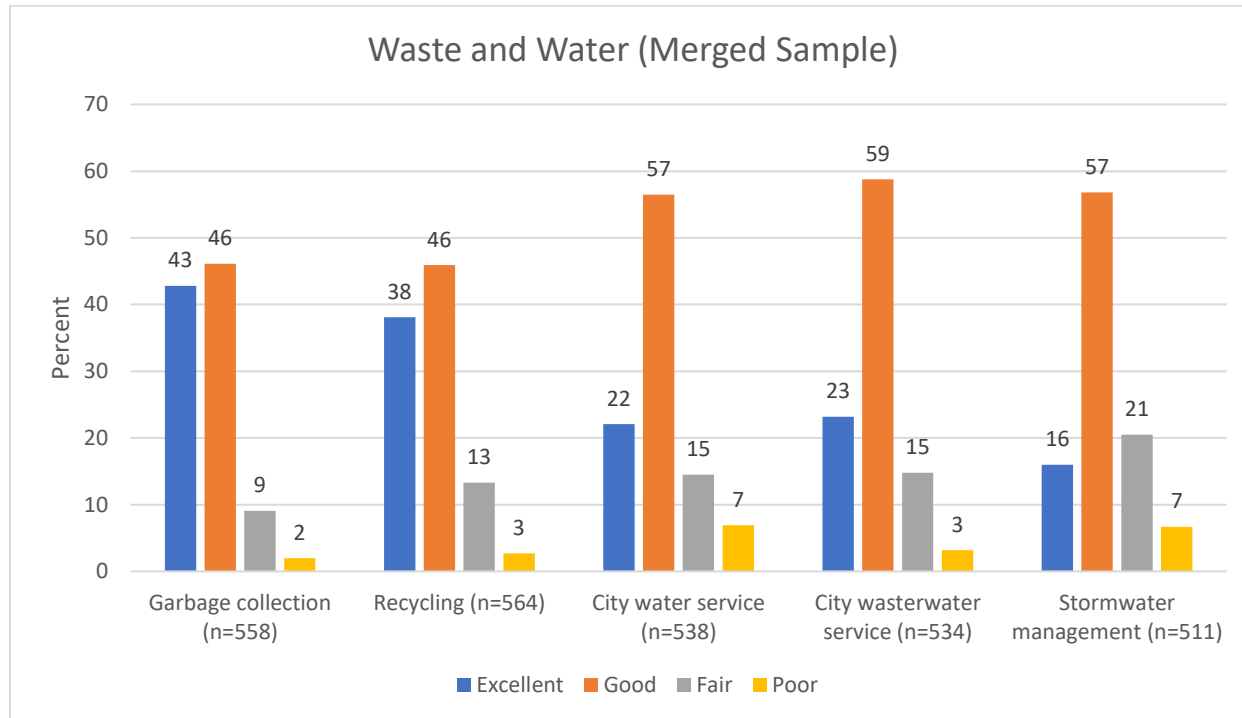
Respondents report low levels of satisfaction for street repairs, street lighting, and traffic signal timing. Reflecting the ratings for walking and biking above, it is not surprising that ratings for trail and sidewalk maintenance nearly reach benchmarks.

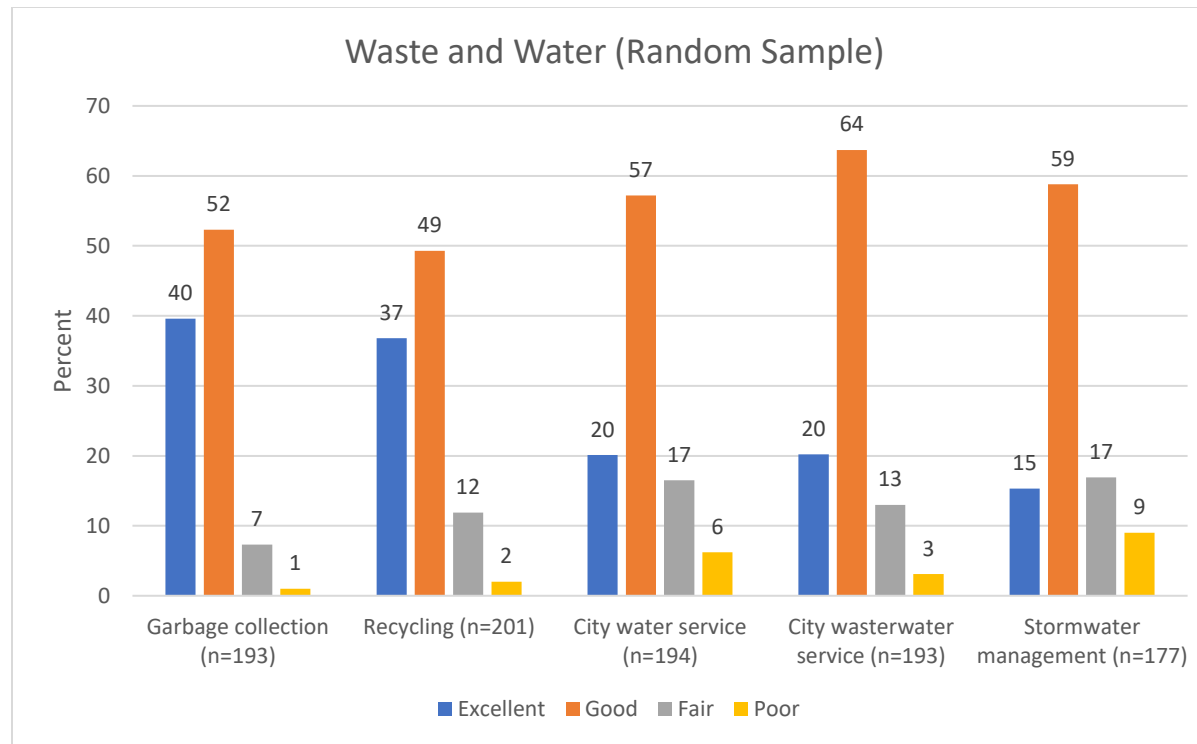




Waste and Water

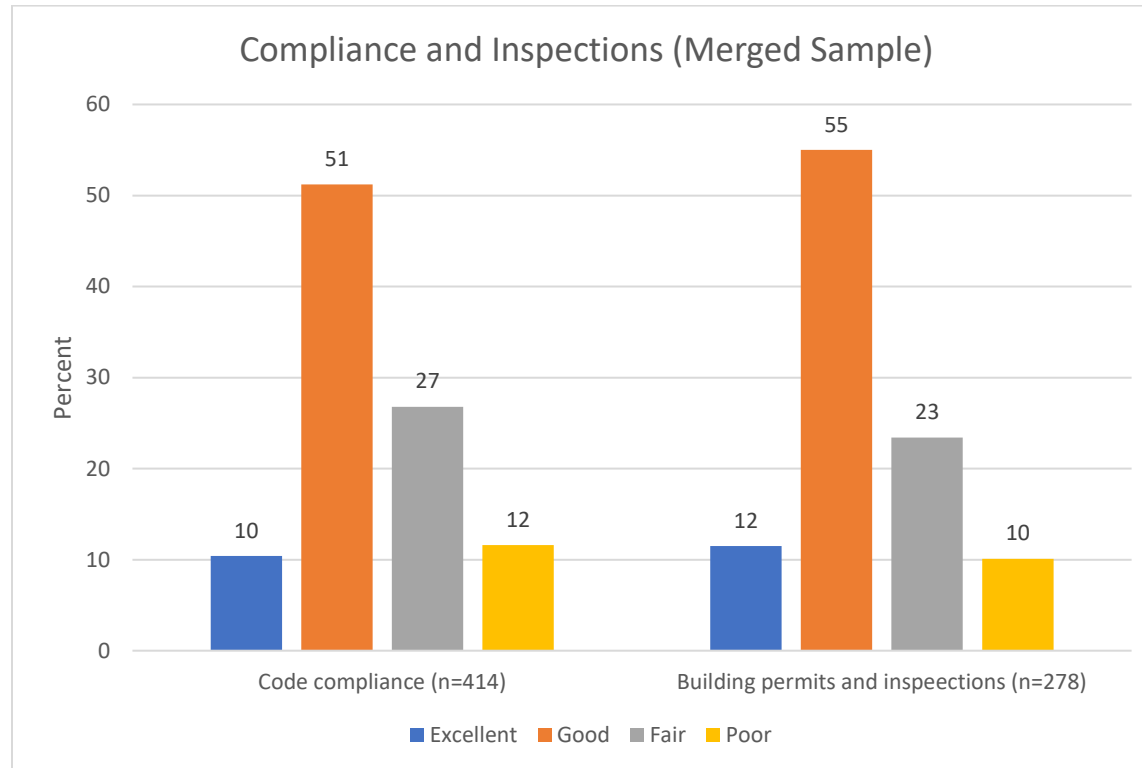
Respondents rate waste and water services at levels exceeding benchmarks. Of note is that over 40% of respondents rate the quality of garbage collection as excellent.

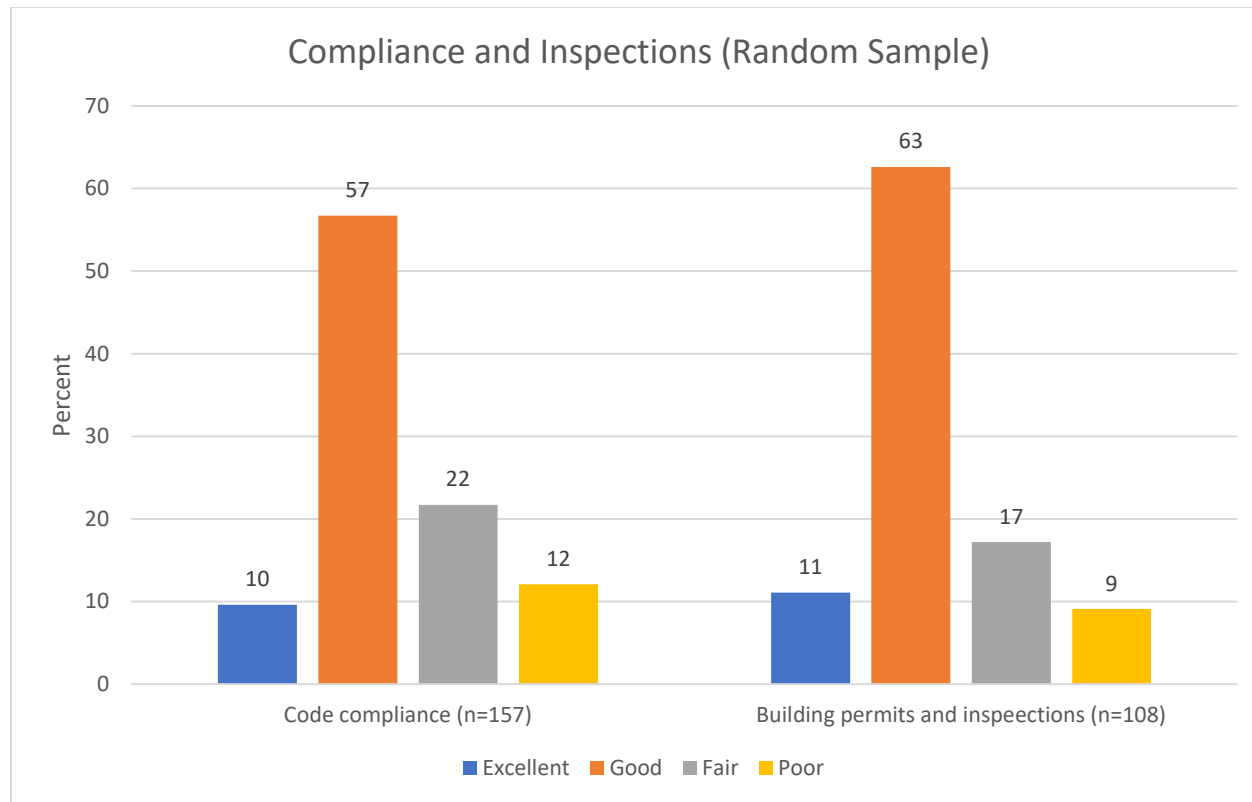




Code Compliance and Inspections

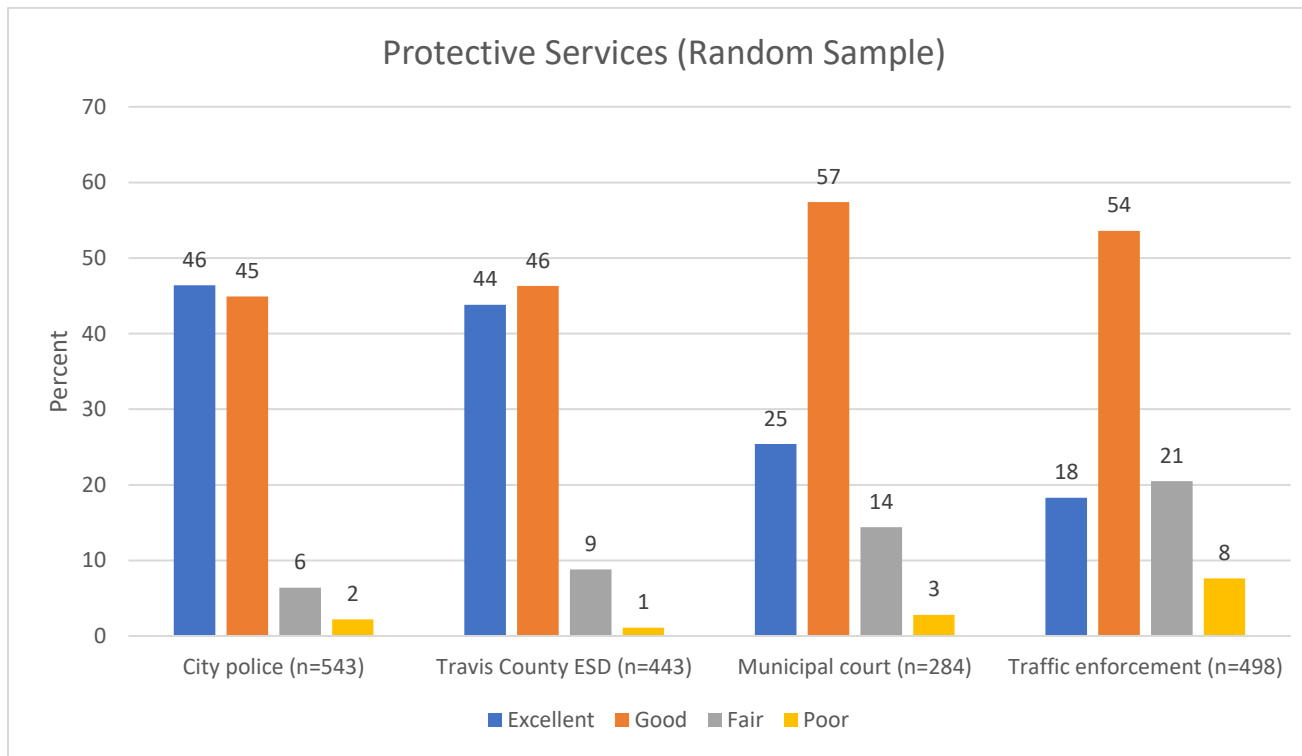
For those respondents who had an opinion on building permits and inspections, 74% of respondents in the random sample and 67% of respondents in the merged sample rate the indicator as good or excellent.

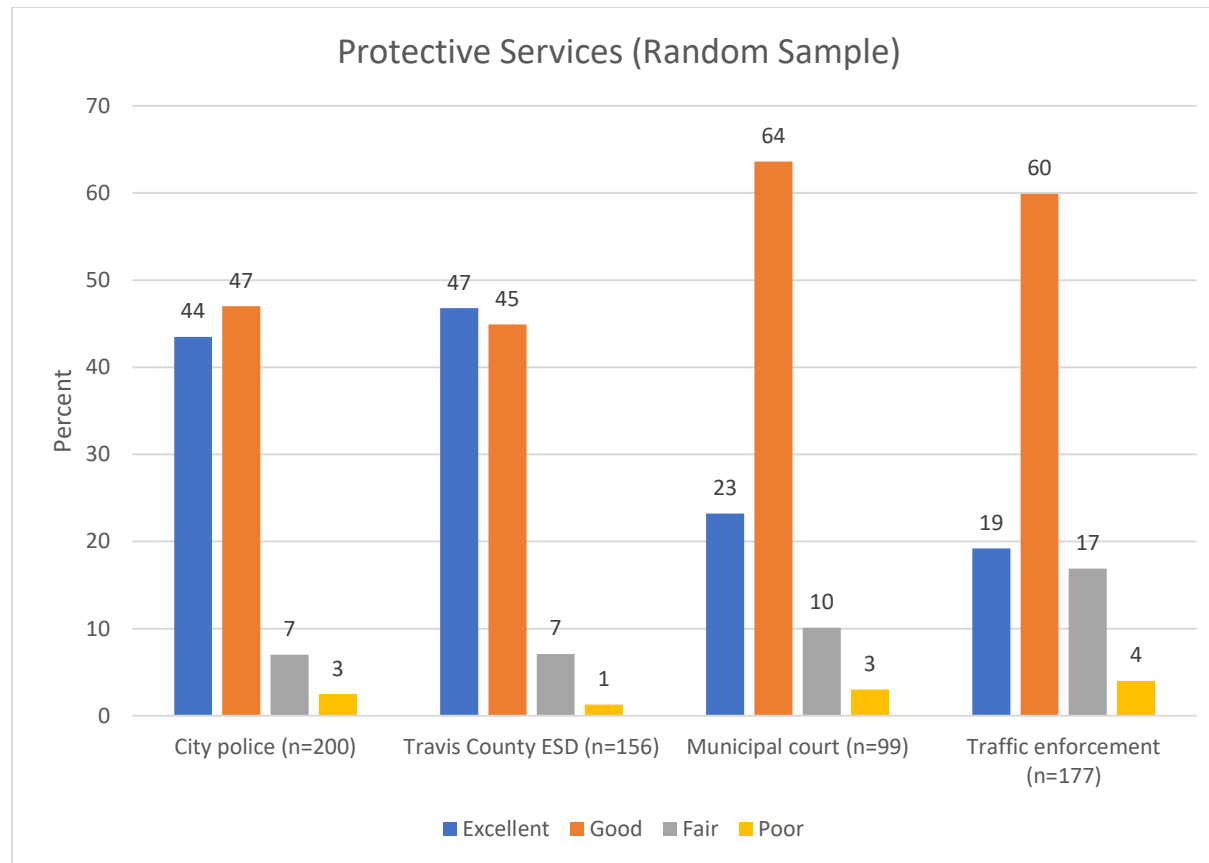




Protective Services

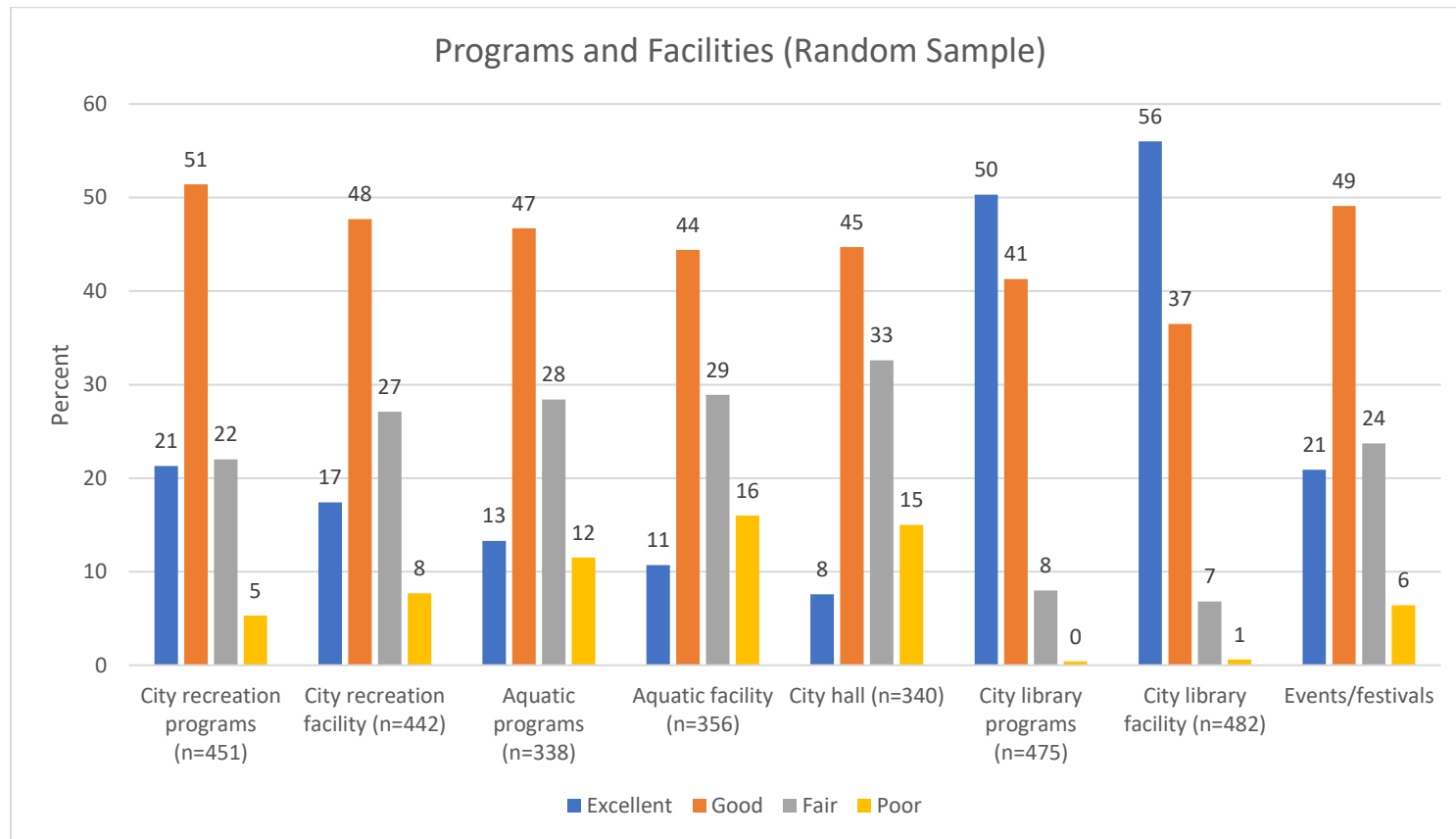
Respondents rate all protective services at levels that exceed benchmarks.

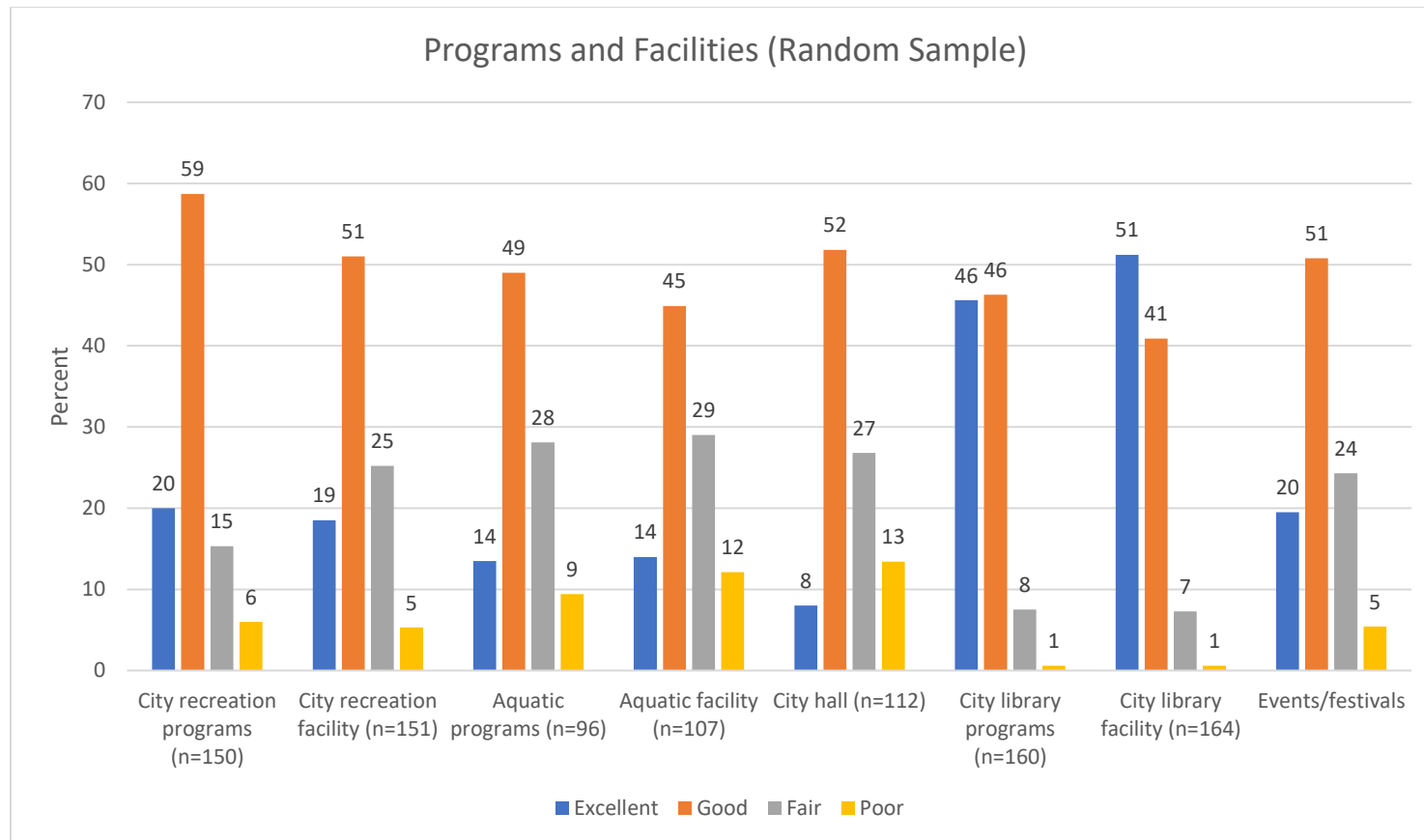




Programs and Facilities

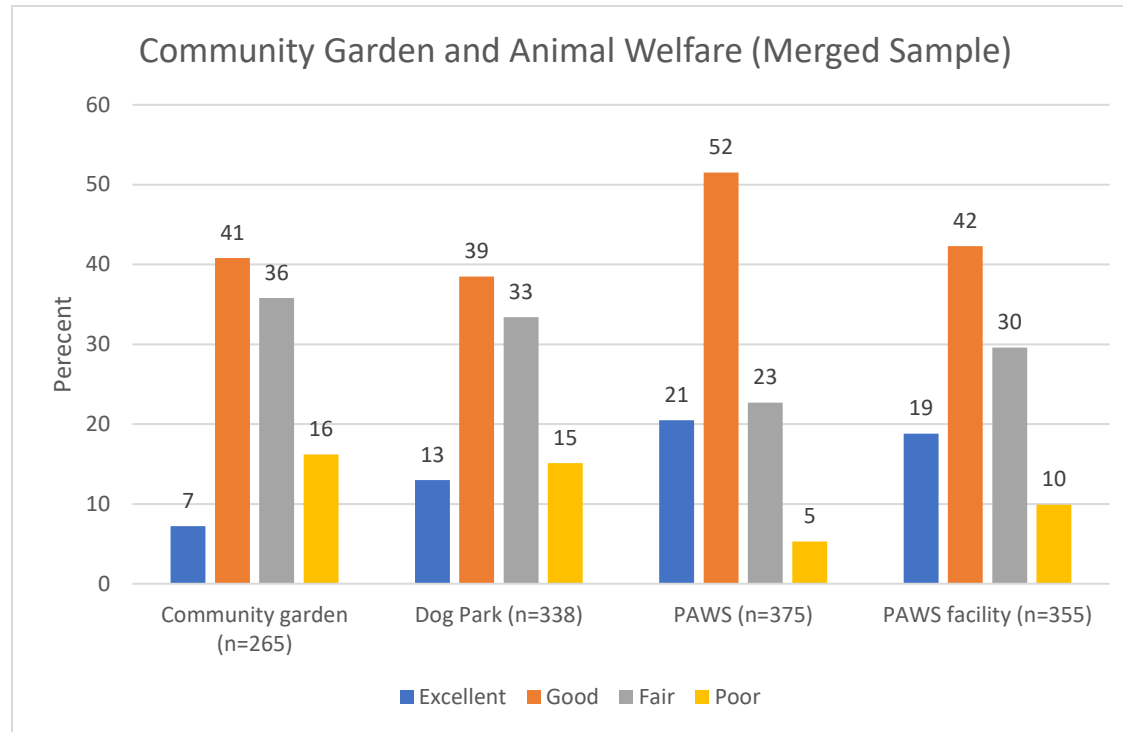
Respondents rate the library facility and programs more highly than other city programs and facilities. Only 8% of respondents rate city hall facilities as excellent. However, when asked to select from a list of 13 items that should receive the most emphasis from city leaders, city hall office and council chamber expansions received the lowest percentage.

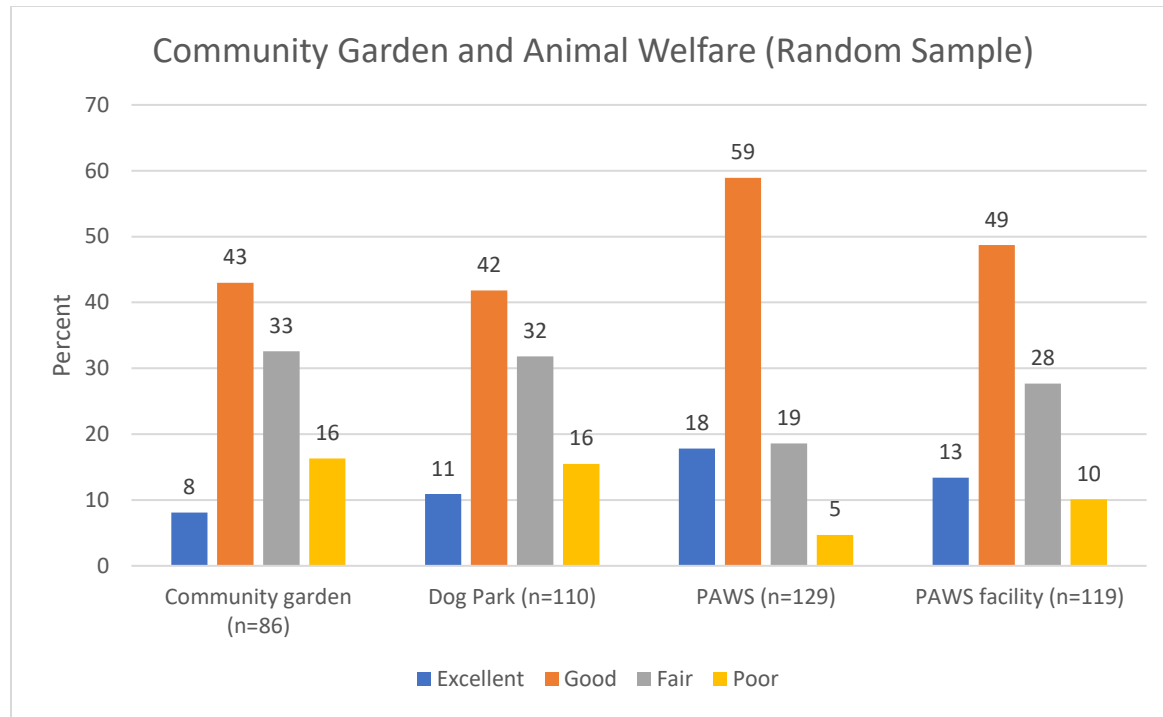




Community Garden and Animal Welfare

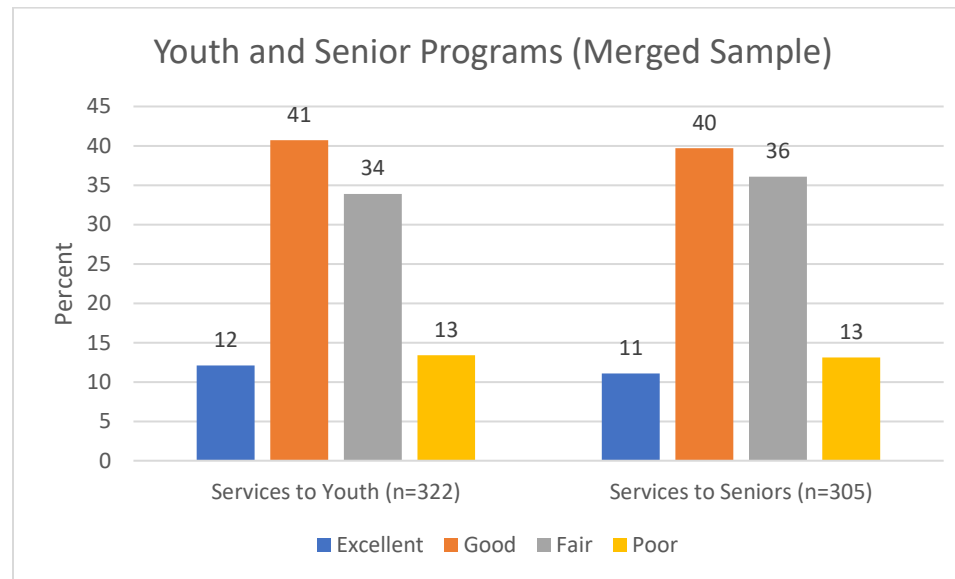
Of those respondents with an opinion, 48% of respondents rate the community garden as good or excellent.

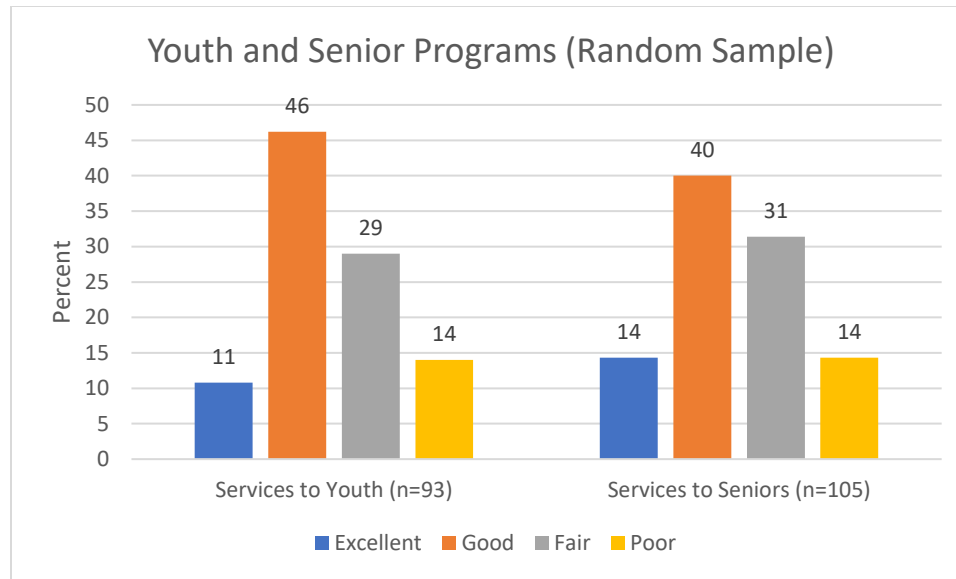




Youth and Senior Programs

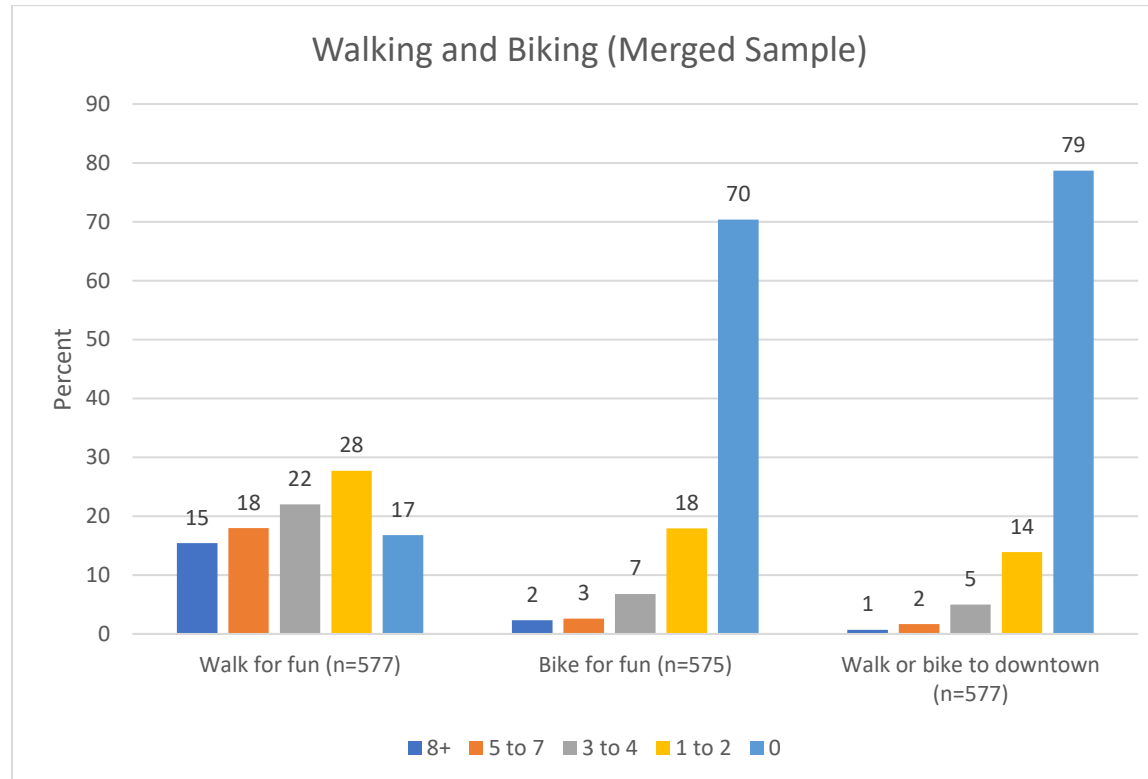
Fifty-three percent of respondents rated youth and senior programs as good or excellent. Fifty-one percent rated services to seniors as good or excellent.

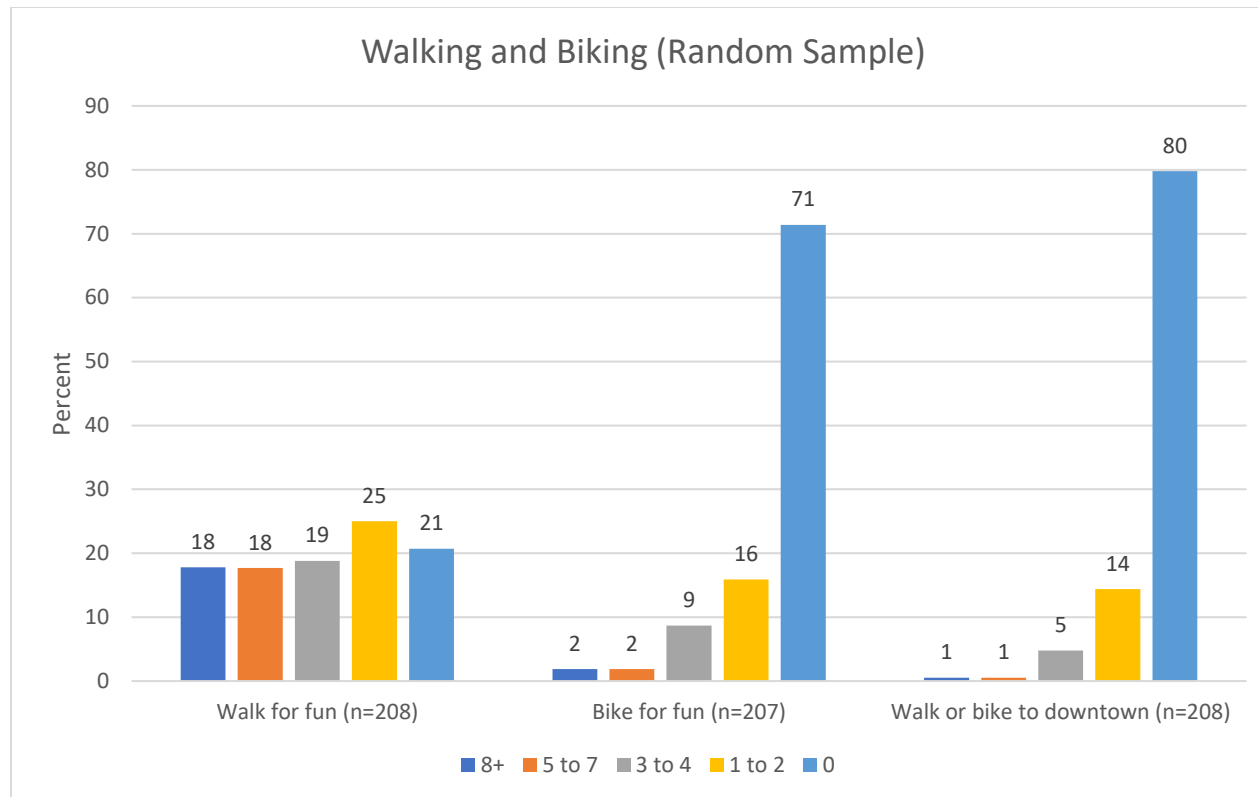




Walking and Biking

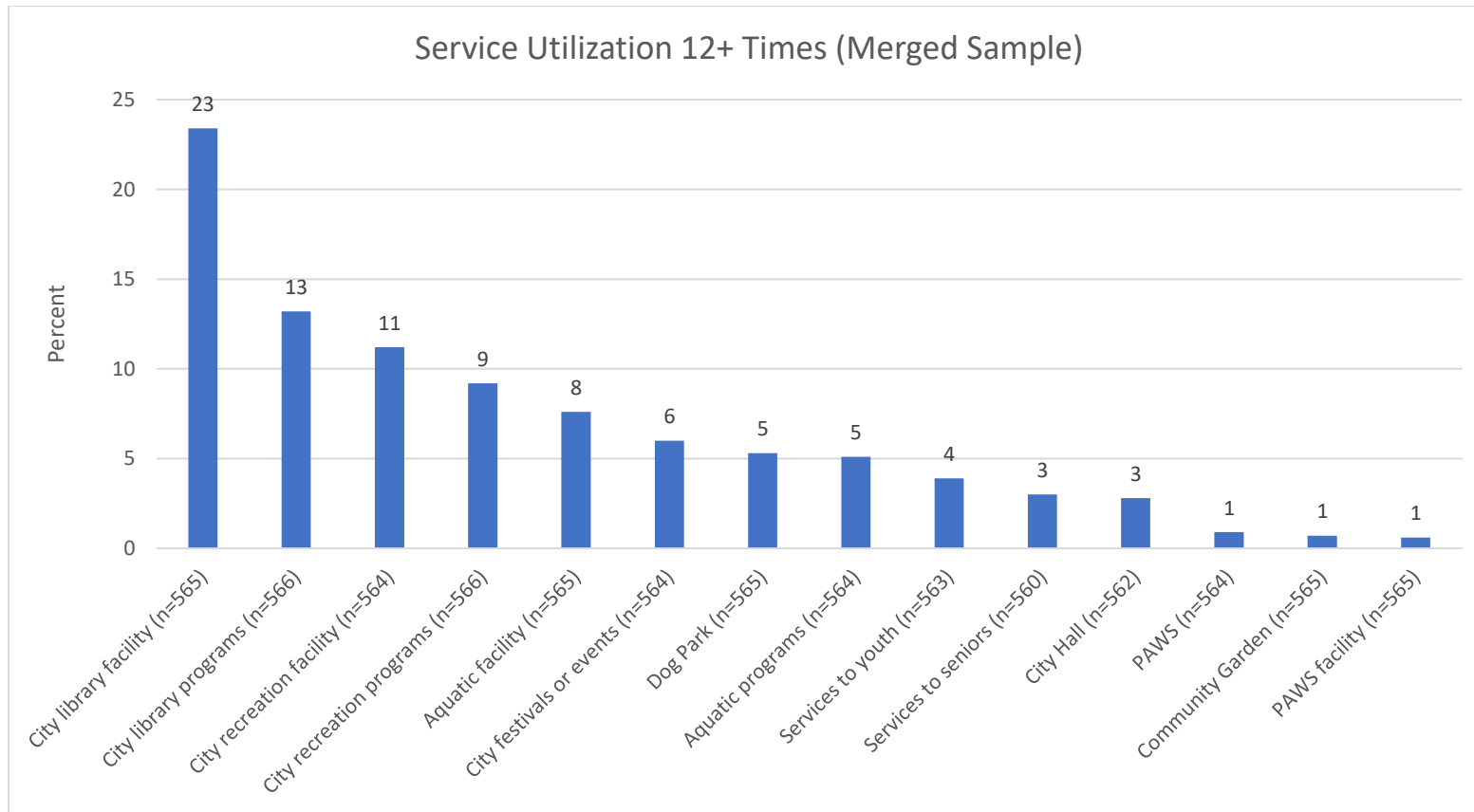
Walking is the most common outdoor activity and 15% indicate that they walked for fun 8 or more times in the last two weeks. Seventy percent of residents did not walk for fun in the prior two weeks to completing the survey and 79% did not walk or bike to downtown during this period.

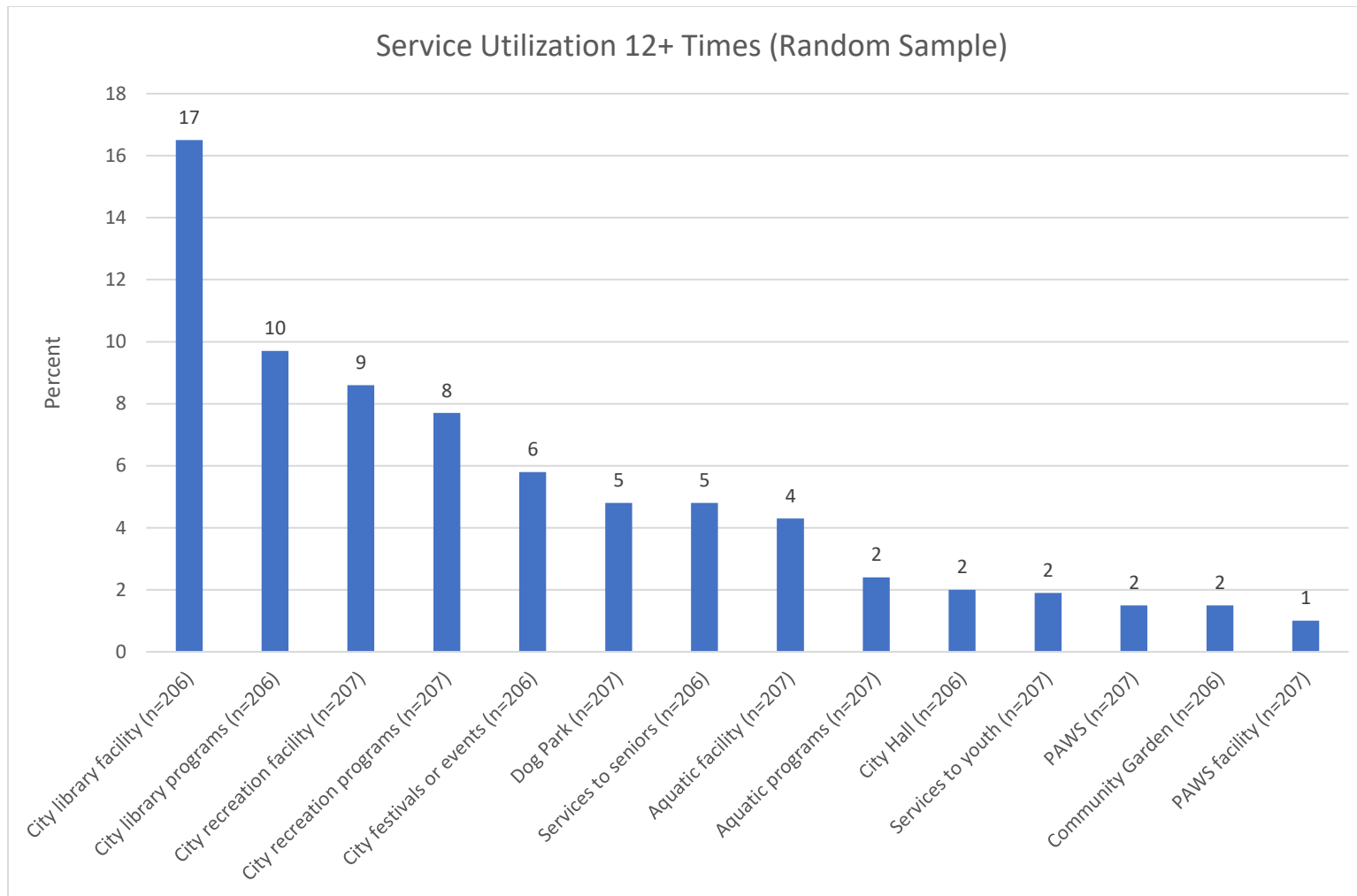




Programs and Facilities Utilization

Twenty-three of respondents use the city library facility 12 or more times per year and nearly 13% of respondents attended city library programs 12 or more times.



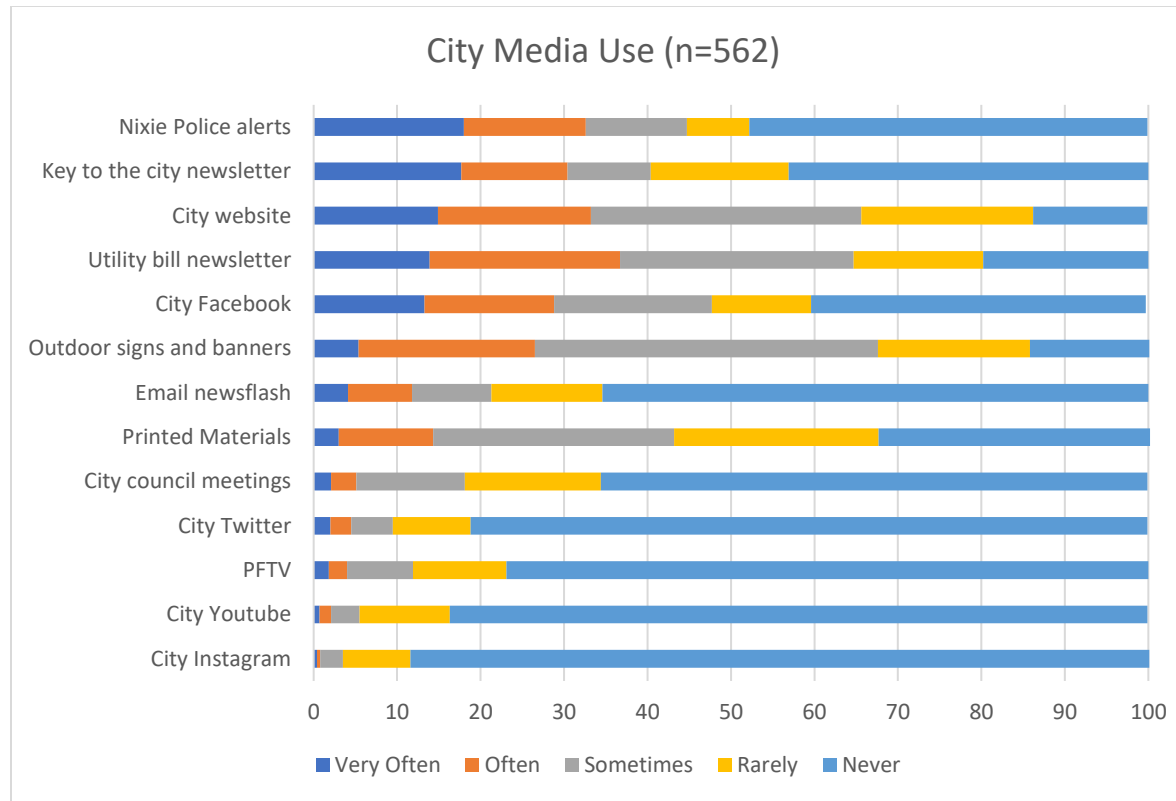


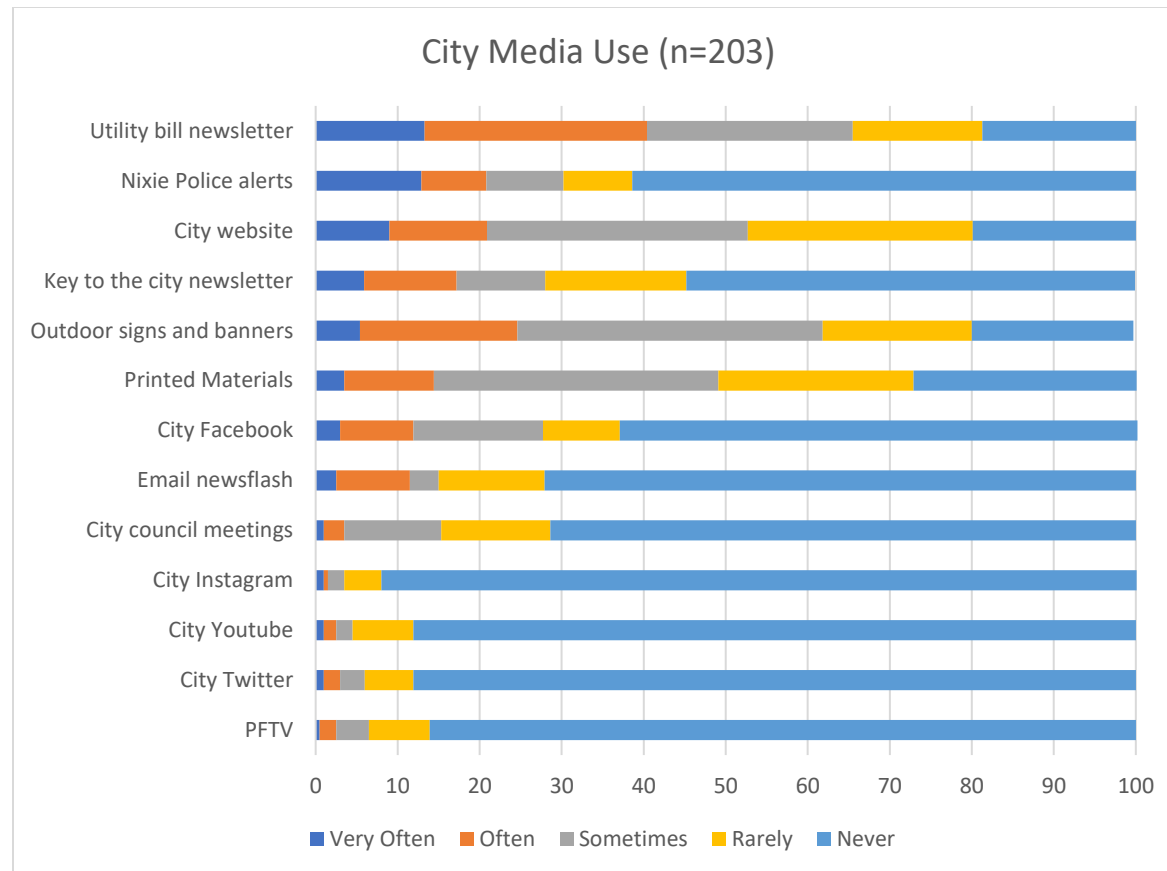
Media Use

Based on the merged sample, the top three ways that residents receive information from **city media sources** include the Nixle police alerts, the Key to the City Newsletter, and the city website. The top three ways that the random sample respondents receive information from the city include the city utility bill newsletter, Nixle police alerts, and the city website.

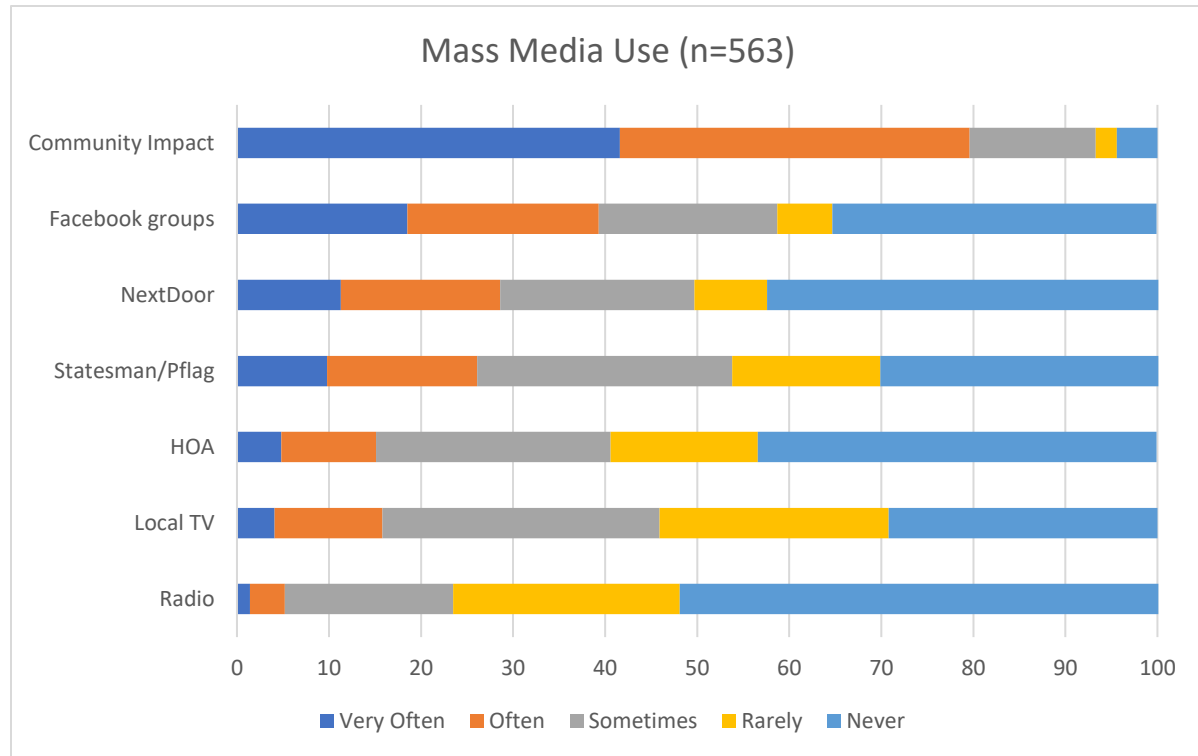
In terms of **mass media and non-city social media**, the top media uses for the merged sample include *Community Impact*, Facebook groups, and NextDoor. The top three ways that random sample respondents receive information from mass media sources include *Community Impact*, NextDoor, and the *Austin American Statesman*.

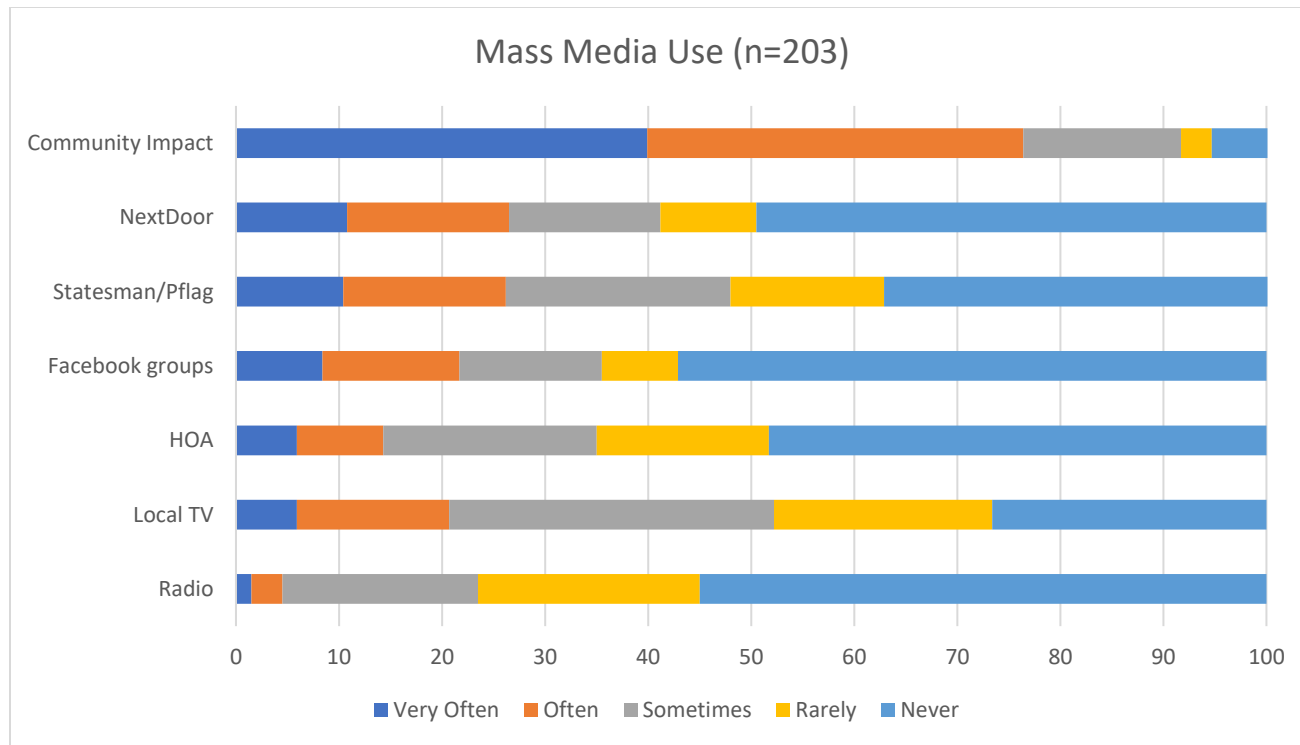
City Media Use





Mass Media Use



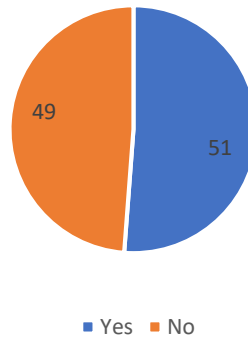


Contact with City and Satisfaction with Contact

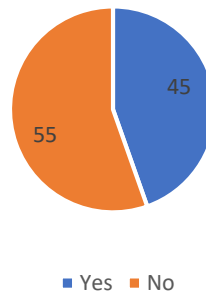
Resident-Initiated Contact

Random sample respondents are slightly more likely to have contacted a city employee than those in the merged sample (55% v. 59%).

Resident-Initiated Contact (n=564)

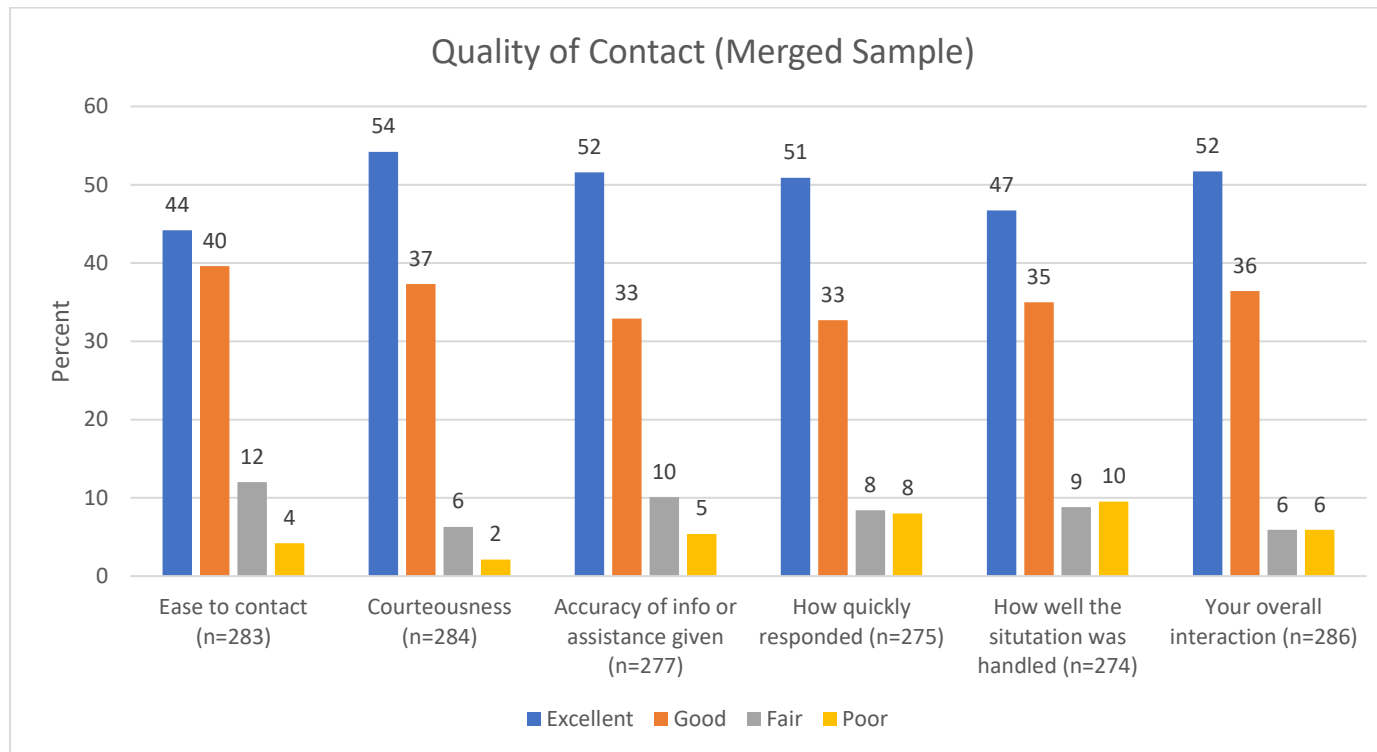


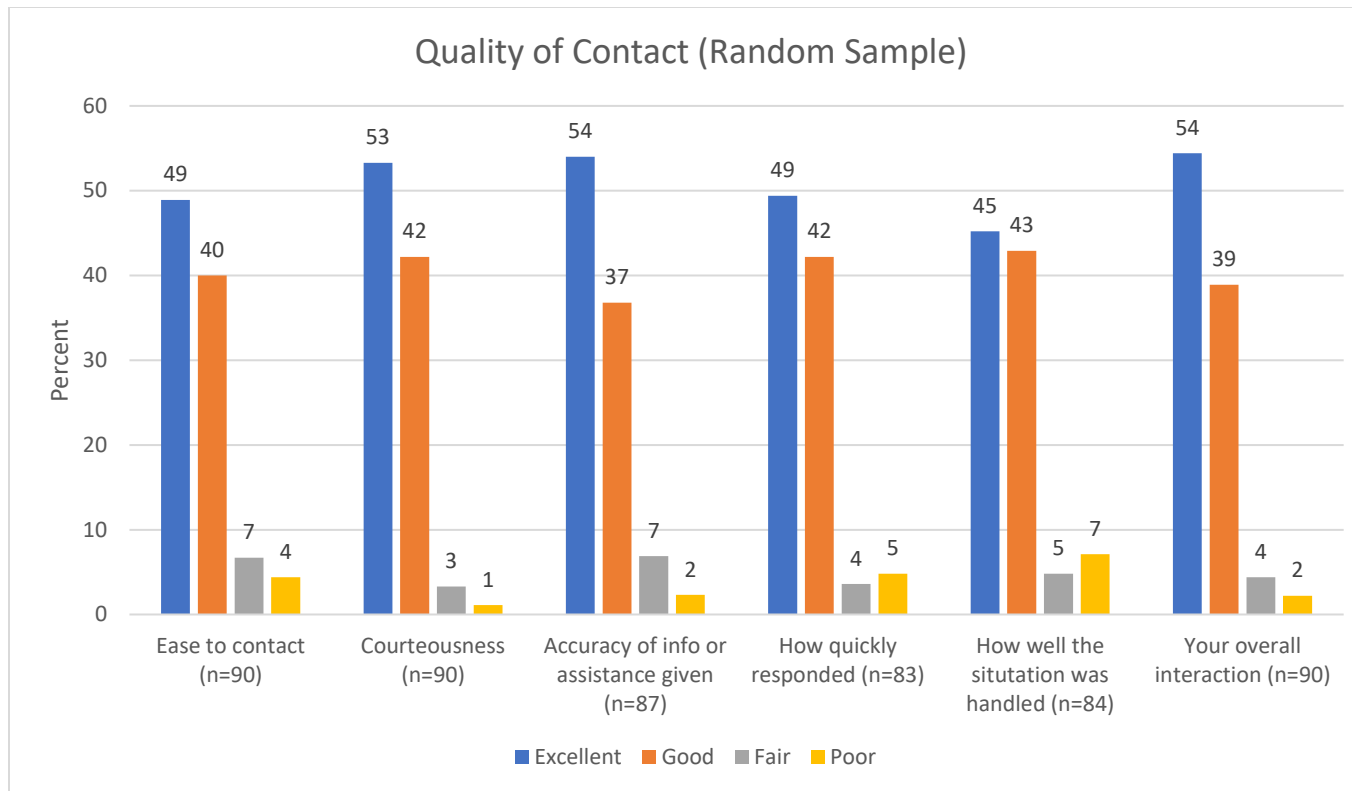
Resident-Initiated Contact (n=204)



Quality of Contact

Eighty-eight percent of respondents who reported contact with a city employee in the merged sample and 93% of the respondents in the random sample reported the quality of the contact as good or excellent.

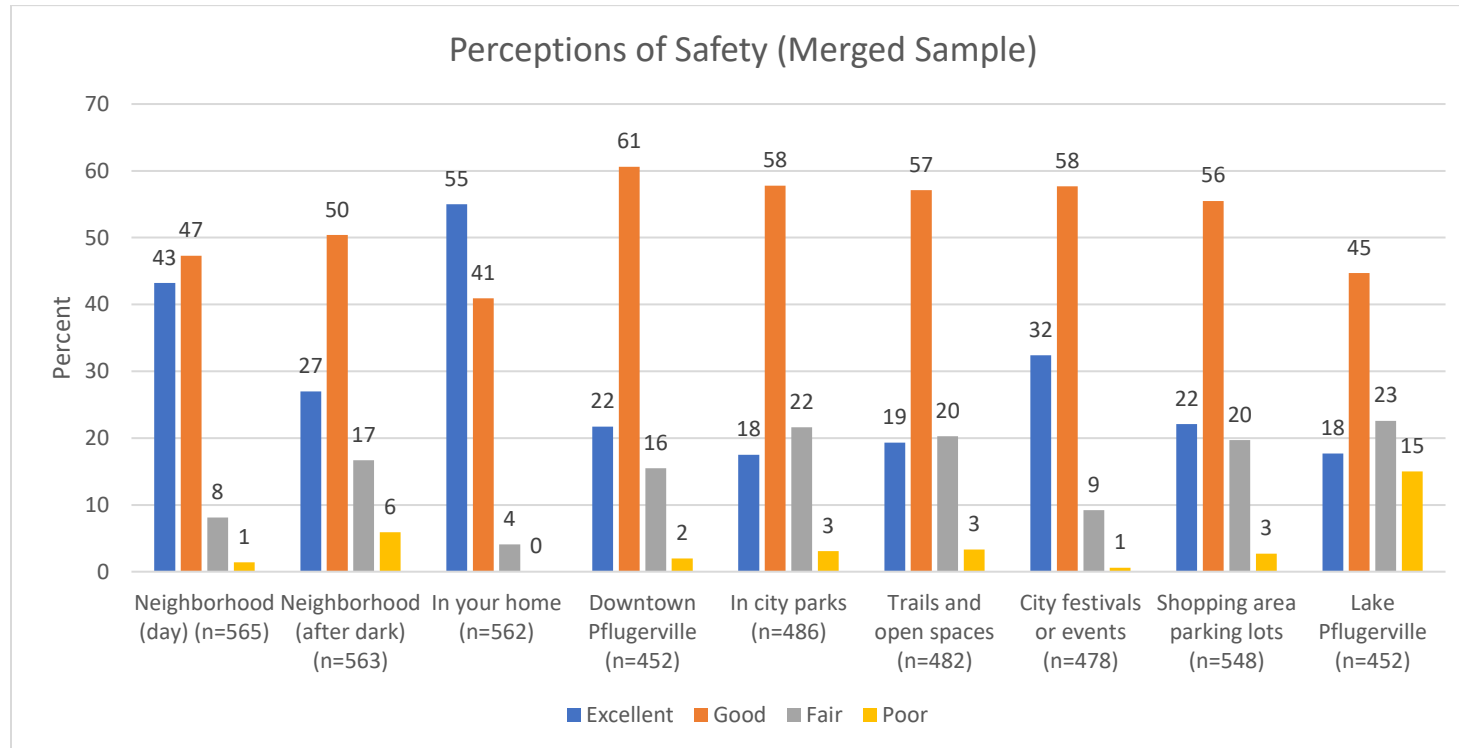


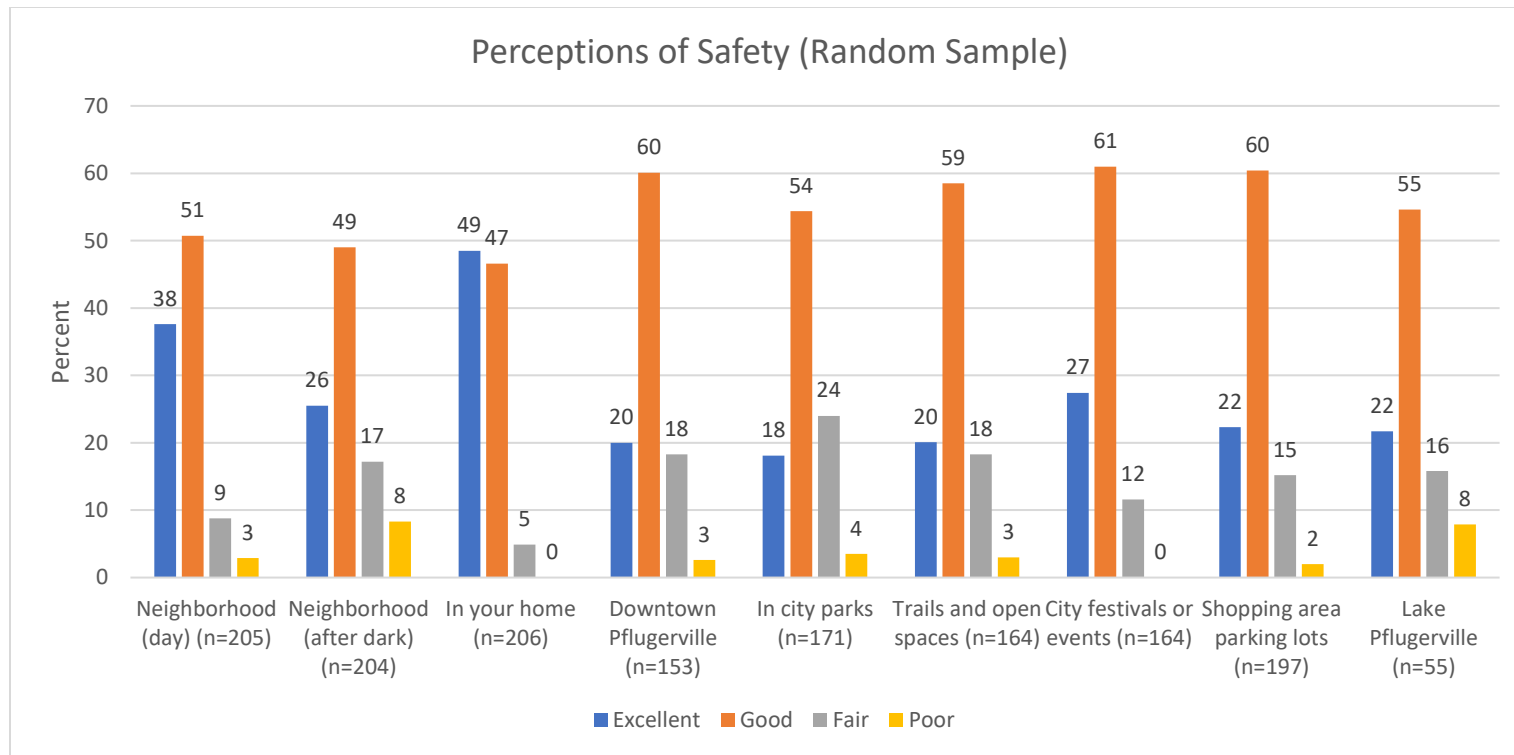


Perceptions of Safety

Perceptions of Safety

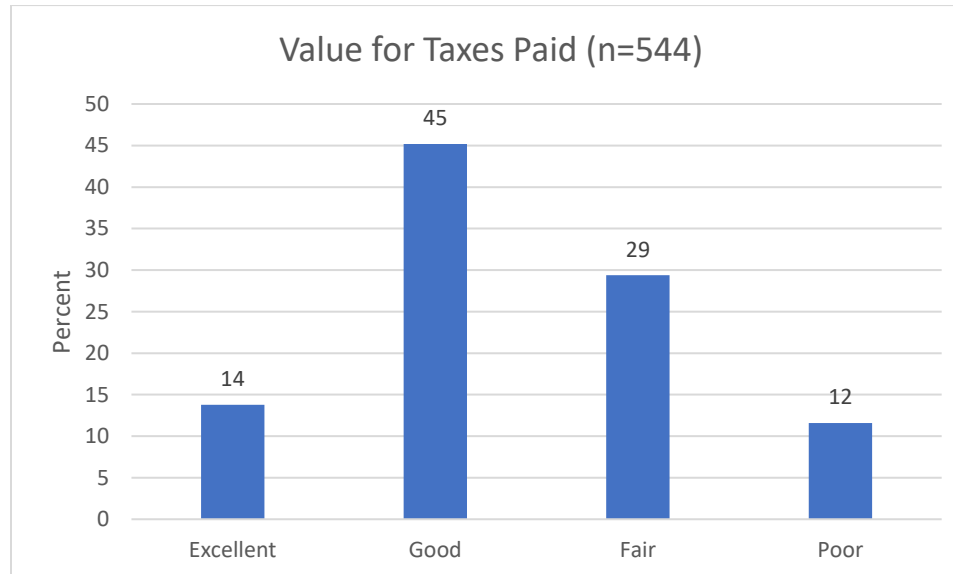
The perceptions of safety indicators either exceed or approach benchmarks. Respondents in the merged sample report lower levels of satisfaction than those in the random sample (63% rate as good or excellent versus 88%).

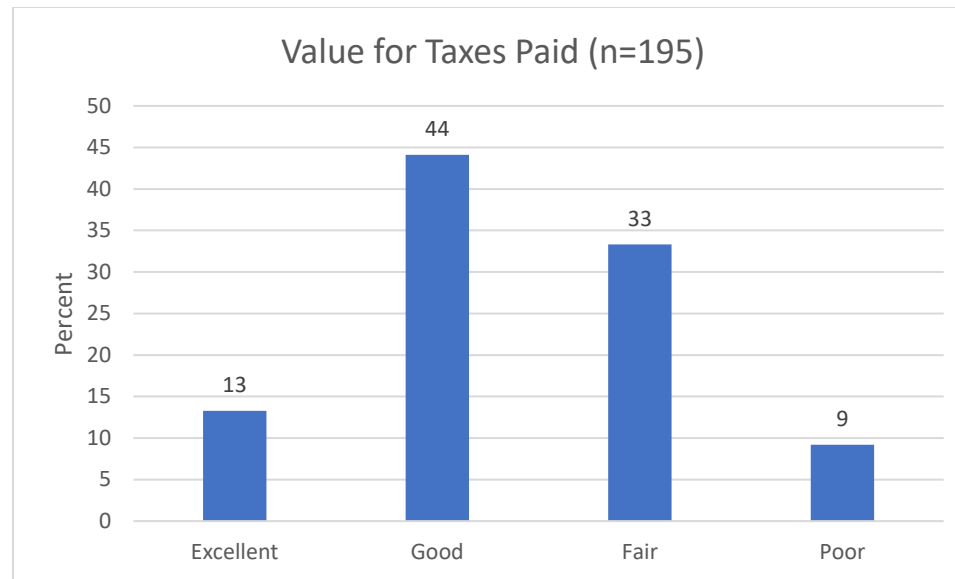




Value for Taxes Paid

Nearly 60% of respondents rate the value for services they receive from the city for the taxes they pay as good or excellent.





Statistically Significant Differences by Respondent Characteristics

This section reports statistically significant differences in the percent who rate the indicator as either good or excellent. The Chi-Square statistic does not indicate a causal relationship, but rather, it is a measure of association. Only those statistical tests with a significance level of less than .05 are reported following standard convention in social science research. A significance level of .05 means that there is a 95% probability that the observed differences did not occur by chance. In other words, there is an association between a selected characteristic and one of the survey indicators. It is also important to note that explaining attitudes using a single variable (e.g., age or income) should be done with caution.

Because the statistical tests are more precise with a larger sample and there are few differences based on survey mode, the merged sample results are presented below.

Survey Method

One might expect that respondents to the open survey log on and participate because they have intense negative views. However, this is not the case. While there are some statistically significant differences, these are almost entirely linked to issues with traffic congestion with open survey respondents providing lower ratings than random sample respondents.

	Percent who report good or excellent		Chi Square	Sig.
	Open Survey	Random		
Employment opportunities	39	52	6.85	.01
City beautification	57	66	4.78	.03
City planning and vision	40	51	6.15	.02
Walking for fun	73	87	14.91	.001
Biking for fun	69	79	5.43	.02
Traffic flow on major streets	22	36	14.43	.001
Traffic flow through intersections	19	32	13.74	.001
Street repair and maintenance	43	56	9.18	.002
Street lighting	55	66	5.20	.03
Traffic signal timing	42	55	8.42	.004
Traffic enforcement	68	79	7.06	.01

Gender

There are only four differences in the views of men and women. Men rate city beautification, code compliance, city police, and the city hall facility lower than women.

	Percent who report good or excellent			
All Respondents				
	Male	Female	Chi Square	Sig.
City beautification	51	66	12.70	.001
Code compliance	56	66	4.35	.05
City police	88	94	4.85	.03
City hall facility	45	57	4.47	.04

Race

There are few statistically significant differences by race. White respondents rate building permits/inspections, the city library facility, city recreation programs, and value for taxes paid higher than non-white respondents.

	Percent who report good or excellent			
All Respondents				
	Non-White	White	Chi Square	Sig.
Building permits/inspections	55	71	6.42	.01
City library facility	87	95	8.90	.01
City recreation programs	50	63	4.56	.04
Value for taxes paid	52	63	5.44	.02

Years living in Pflugerville

While there are several associations with number of years living in Pflugerville, there is no consistent pattern. One exception is neighborhood quality and code compliance. This is logical given that newer residents may be living in new subdivisions and apartments.

	Percent who report good or excellent			
All Respondents				
	Less than 11 years	11 or more years	Chi Square	Sig.
Neighborhood quality	86	77	3.37	.01
Walking for fun	74	83	5.66	.02
Walking in your neighborhood	89	82	4.68	.03
Biking in your neighborhood	77	69	4.49	.04
Amount of downtown public parking	29	21	4.50	.04
Code compliance	68	57	5.17	.03
Travis Co. ESD 2	86	93	6.09	.02
Traffic enforcement	67	76	5.43	.03

Home Ownership

Homeowners are less likely to report that they think the value for the taxes paid is good or excellent. In addition, homeowners are less satisfied with the animal shelter, dog park, and city beautification than renters.

	Percent who report good or excellent			
All Respondents				
	No	Yes	Chi Square	Sig.
Employment opportunities	62	42	4.35	.05
City beautification	80	59	6.56	.01
PAWS animal shelter	86	59	5.99	.02
Dog park facilities	86	69	4.51	.04
Value for taxes paid	81	58	6.41	.01

Employment

Residents who work full-time are less satisfied with employment opportunities and the PAWS shelter facility than those that work part-time, are not working for wages, or are retired.

	Percent who report good or excellent			
All Respondents				
	Not Full-time	Full-time	Chi Square	Sig.
Employment opportunities	52	37	10.10	.002
PAWS shelter facility	70	53	9.78	.002

Income

While there are a number of differences based on income level, it is noteworthy that higher-income residents rate city beautification lower than those in the middle and lower-income categories.

	Percent who report good or excellent				
All Respondents					
	Less than \$50K	\$50- \$100K	\$100K or more	Chi Square	Sig.
Employment opportunities	56	48	39	6.39	.04
City beautification	73	63	56	7.36	.03
Walking for fun	85	83	74	8.01	.02
Walking in your neighborhood	75	84	88	6.50	.04
Biking for fun	81	78	68	8.91	.01
City water service	66	84	82	9.92	.01
Code compliance	44	63	68	9.74	.01
PAWS shelter facility	70	67	54	6.71	.04
Dog park facilities	63	58	46	5.59	.05
City hall facility	62	56	38	9.30	.01

Age

There are no statistically significant difference when age categories are compared.

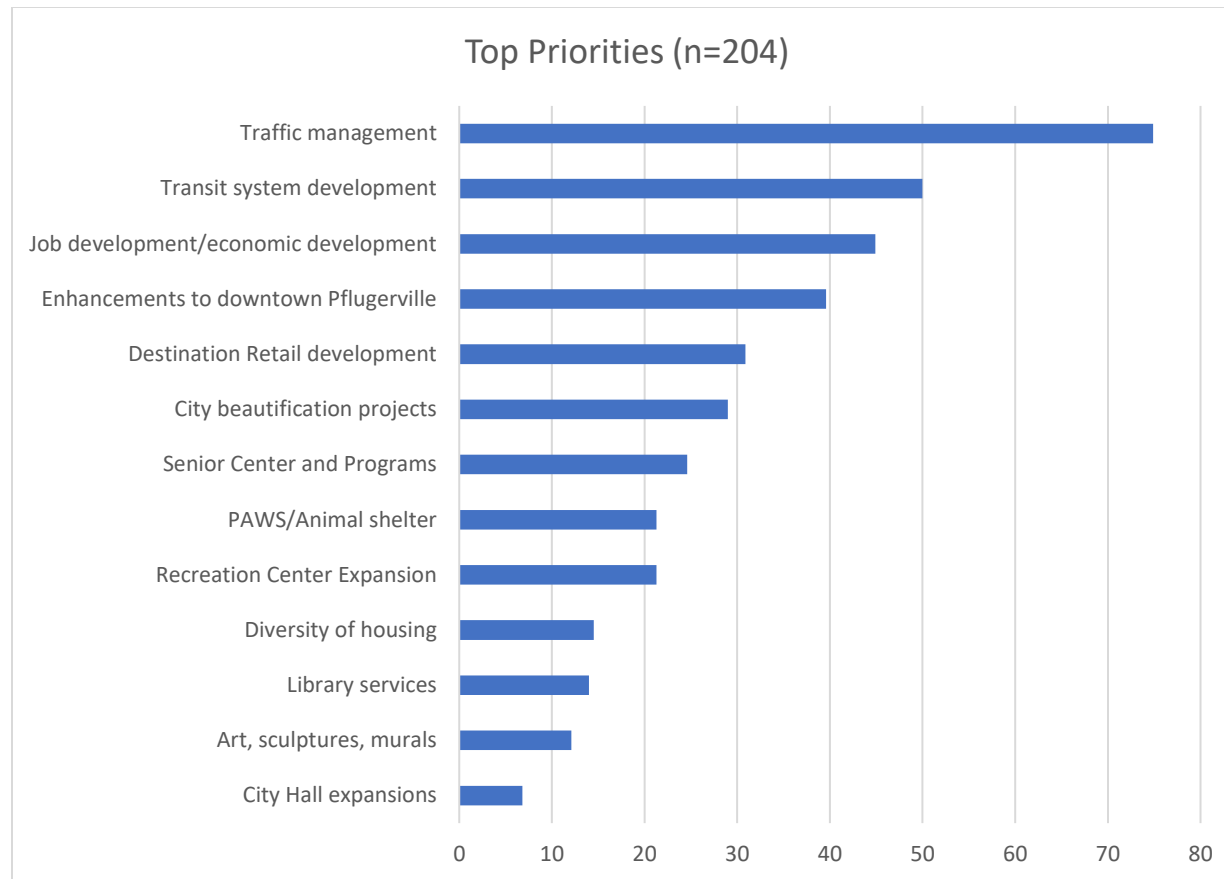
Selected and Self-Defined Resident Priority Issues

Respondents were asked to select four items from a list of 13 items that they think should receive the most emphasis from city leaders. The top four issues for both the random and the merged sample are Traffic Management, Transit System Development, Jobs/Economic Development, and Enhancements to Downtown Pflugerville (see figures below).

When respondents were asked to provide their own top three self-defined priorities in an open-ended format (see tables below and Appendix A), the top self-defined priorities are similar. For example, traffic and streets/roads and statements related to traffic and streets were frequently mentioned. Respondents in the open-ended format also mentioned “keeping taxes low” and “keeping residents safe.”

Top Priorities (Four Chosen from a Provided List)





Top Ten Mentions Coded Open-Ended Responses

Respondents were asked to list their top three priorities for the City of Pflugerville in an open-ended question. In other words, they were free to provide any response. This question was asked first in the survey to better capture what is on the mind of respondents before they were influenced by the questions asked in the survey.

The tables below present the total number of mentions and the percentage of mentions for different categories identified by the research team. Coding open-ended responses is subjective and some of the categories could be combined. For example, streets/roads and traffic point to a similar priority. To better inform the users of this information, the categories and frequency and percent of the total, and the original text provided by the respondents are provided

Random Sample

The top three responses for participant in the random sample are Traffic, Safety/Police, and Streets/Roads. In other words, 20% of the items listed as priorities were linked to congestion (Traffic and Streets/roads). If respondents who listed mass transportation are included in this figure, the percent of mentions related to congestion increases to 24%.

Economic development and managed growth are difficult to reconcile. Eight percent mention in the open-ended responses that there should be more economic development. Six percent indicate in the open-ended responses that “managed growth” or “smart growth” should be a priority. This is not necessarily anti-growth sentiment. In light of the relatively low ratings for “city planning and vision” in the quality of life questions, this appears to suggest a need for better communication about how the growth fits with a vision for the city.

Random Sample	Total	Percent
Traffic	60	10.9
Safety/Police	59	10.7
Streets/Roads	58	10.5
Taxes	50	9.1
Economic Development	44	8.0
City Appearance	38	6.9

Education	35	6.3
Managed Growth	35	6.3
Parks/Trails/Green space	22	4.0
Mass Transportation	19	3.4
Downtown	14	2.5
Infrastructure	12	2.2
Recreation Facilities	12	2.2
Affordable Housing	11	2.0
Community/Family Focus	10	1.8
Too much low-income housing	9	1.6
Water	9	1.6
Jobs	8	1.4
Flooding	7	1.3
Utilities	7	1.3
Seniors	6	1.1
Arts and Culture/Events	6	1.1
Health/Welfare	5	0.9
City Government	4	0.7
Bike lanes/Sidewalks	4	0.7

Quality of Life	3	0.5
End Tax incentives	2	0.4
Minority inclusion	2	0.4
Library	1	0.2

Open Survey

Items related to congestion are again the largest category when streets/roads, traffic, and mass transportation are combined (21.9%). Economic development (which includes more business, amenities, restaurants, etc.) is a slightly higher priority among open survey respondents, but the top priority areas are very similar when compared to the random sample respondents. The percent of respondents who list education is also slightly higher.

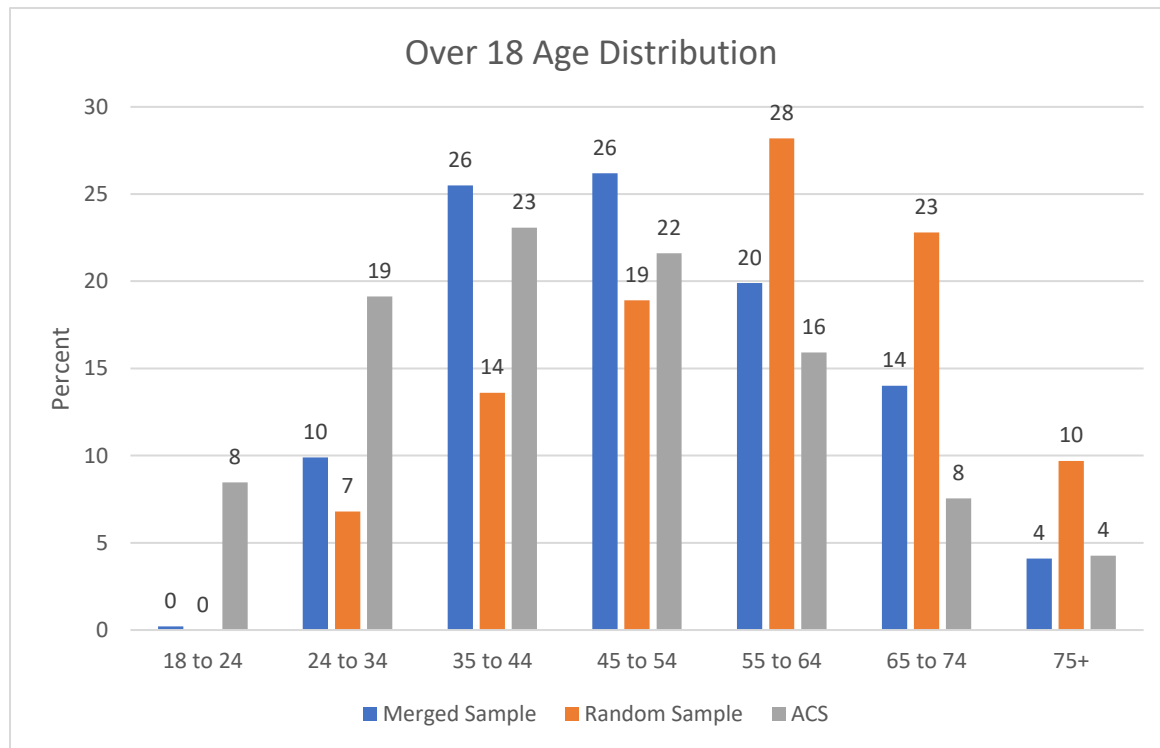
Open Survey	Total	Percent
Streets/Roads	121	11.9
Economic Development	114	11.2
Safety/Police	104	10.2
Taxes	94	9.2
Education	79	7.8
Managed Growth	74	7.3
Traffic	72	7.1

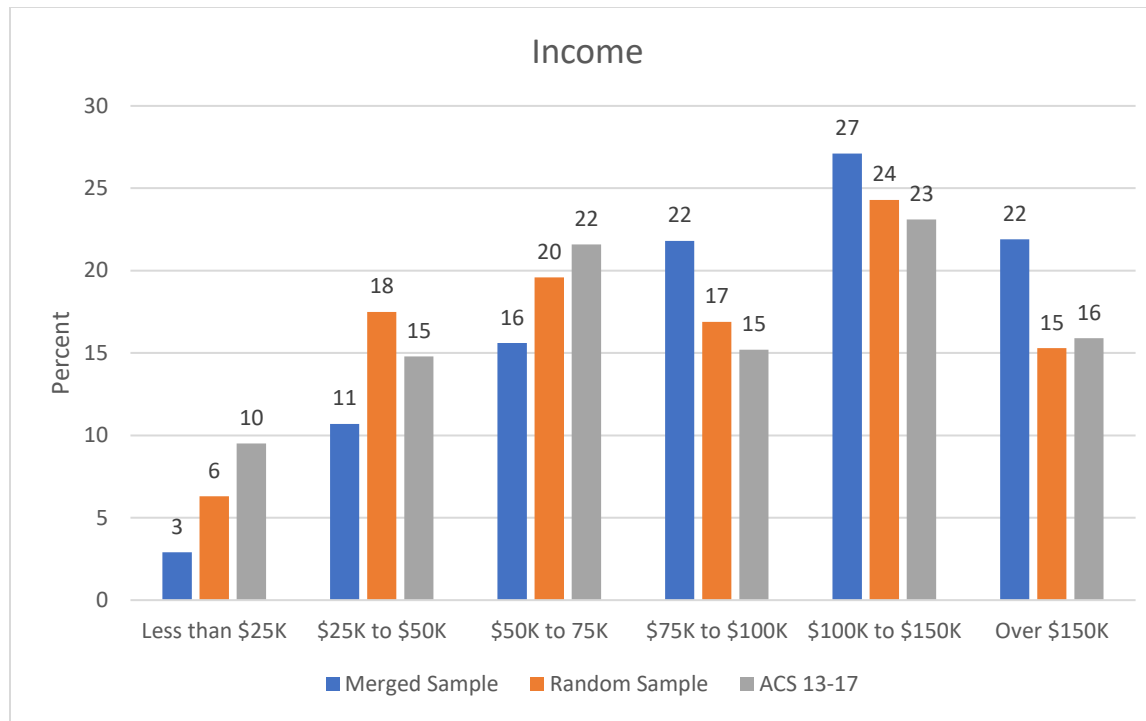
Parks/Trails/Green space	58	5.7
City Appearance	42	4.1
Recreation Facilities	37	3.6
Infrastructure	31	3.0
Mass Transportation	30	2.9
Downtown	24	2.4
Jobs	19	1.9
Community/Family Focus	19	1.9
Affordable Housing	16	1.6
Too much low-income housing	14	1.4
Bike lanes/Sidewalks	14	1.4
City Government	12	1.2
Water	8	0.8
Seniors	5	0.5
Arts and Culture/Events	5	0.5
Library	5	0.5
Health/Welfare	5	0.5
End Tax incentives	4	0.4
Utilities	4	0.4

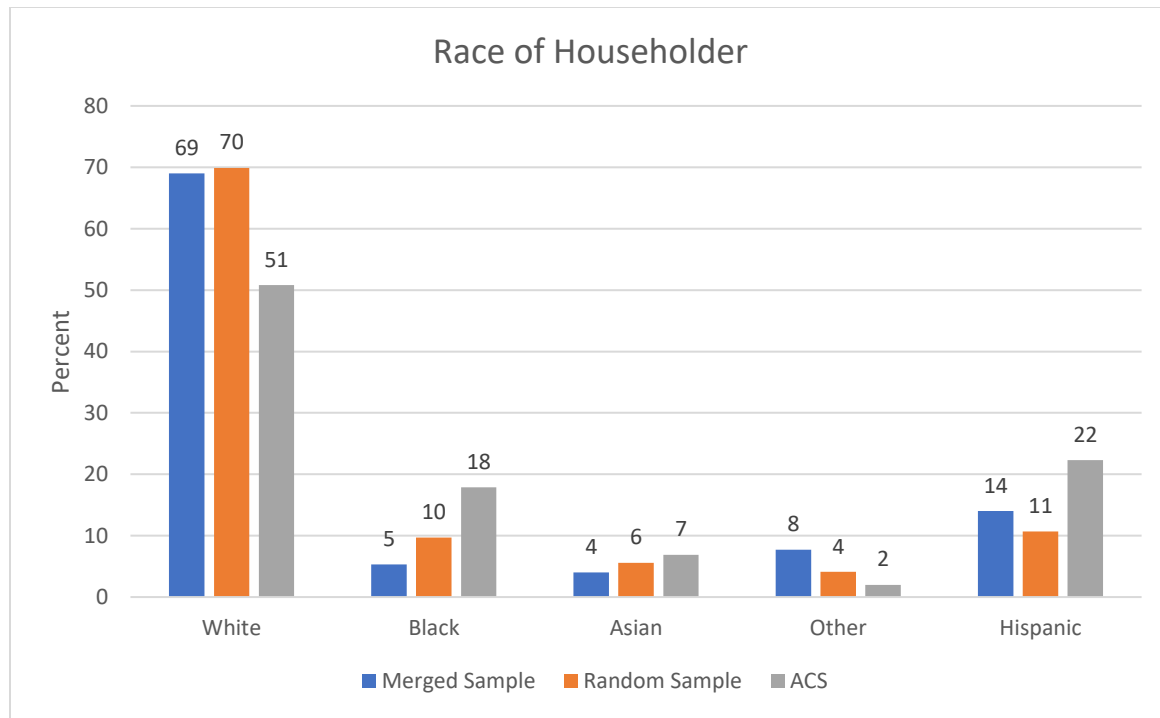
Minority inclusion	3	0.3
Animal Shelter	3	0.3
Quality of Life	2	0.2
Flooding	1	0.1

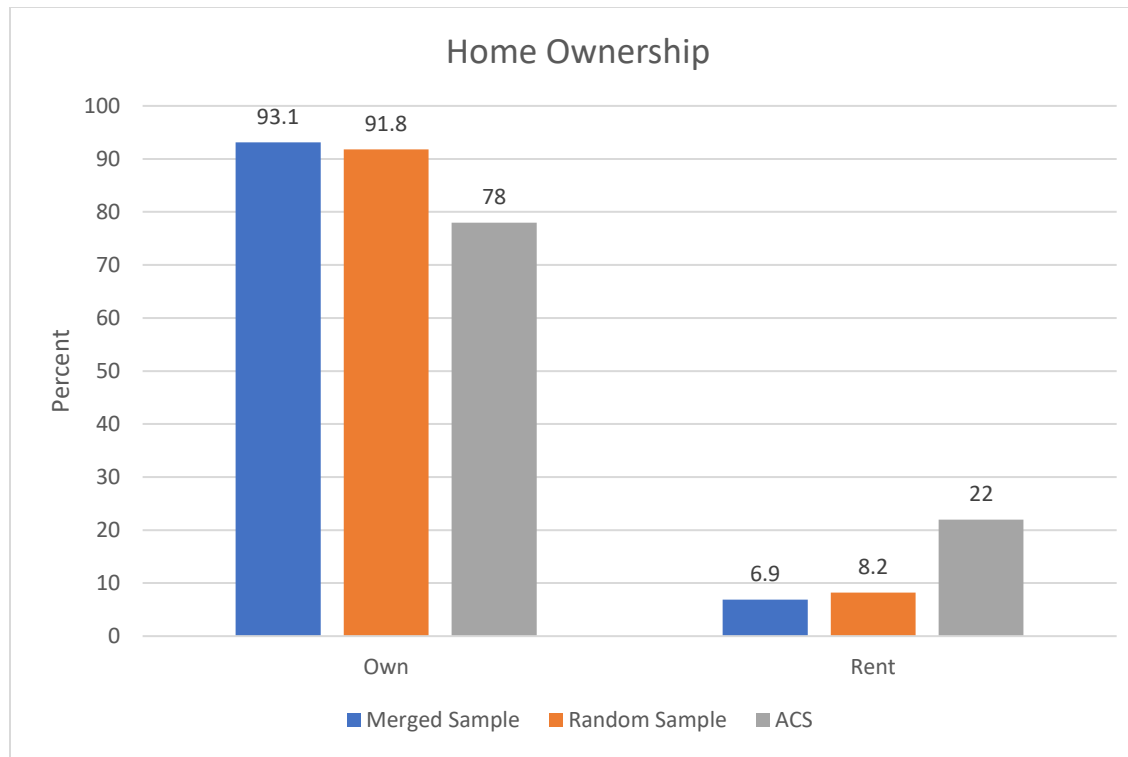
Respondent Demographic Characteristics

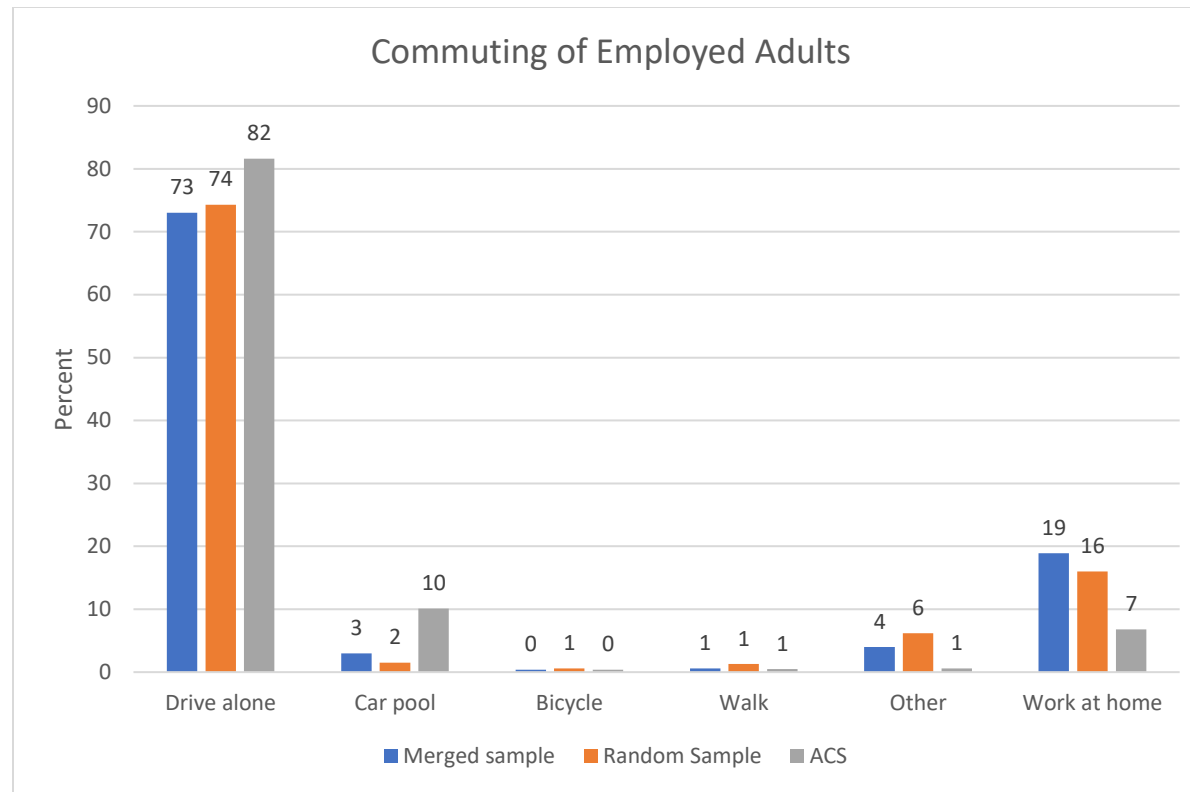
In order to determine how well the respondent characteristics reflect known characteristics of Pflugerville residents, comparisons were made with the characteristics of the US Census data, the random sample respondents, and the merged sample of online and random sample respondents. The random sample over-represents older residents. The merged sample over-represents higher-income residents. Both the random and merged sample over-represent white residents and both survey modes over-represent homeowners.







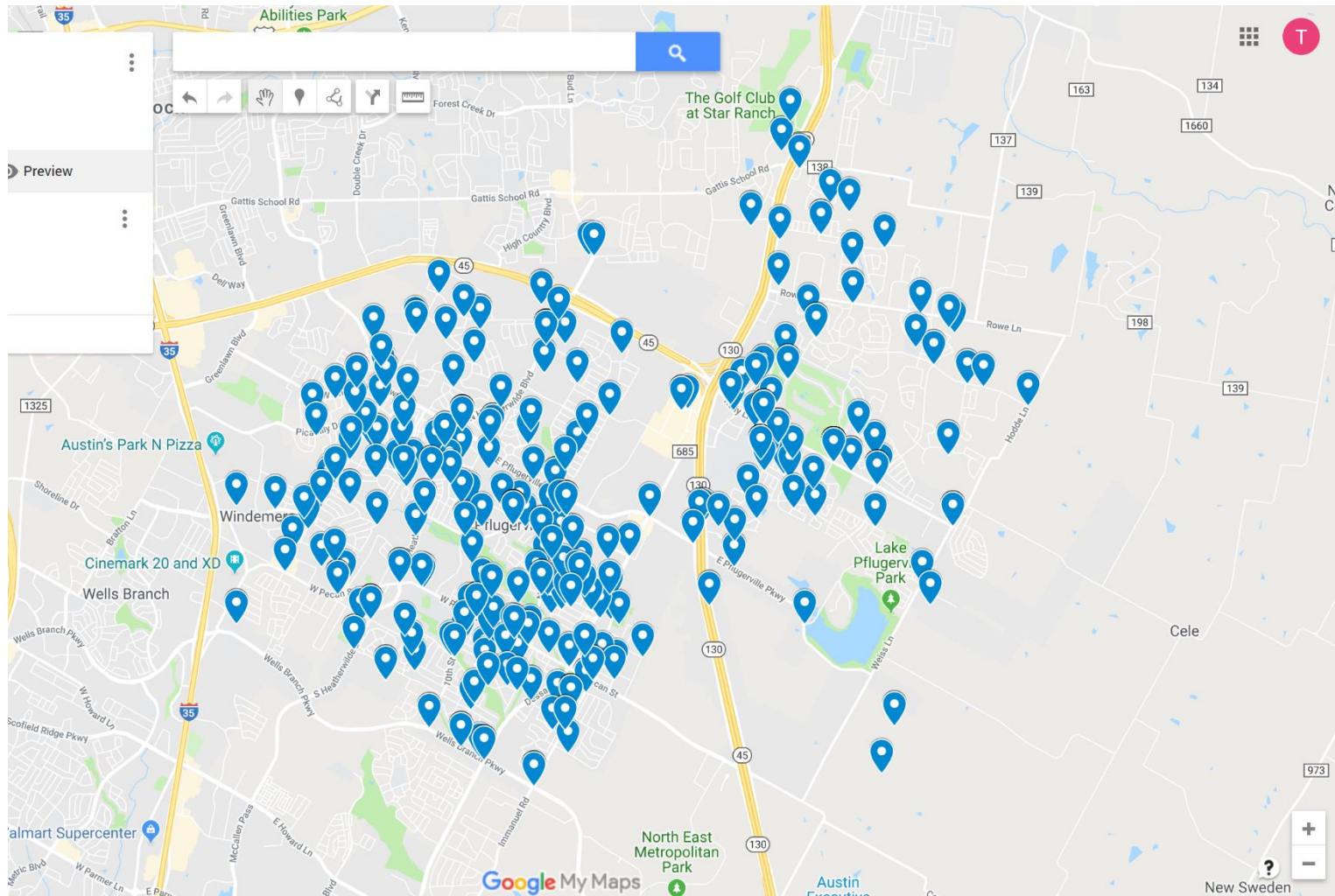




Geographic Location of Respondents

Respondents were asked to provide the nearest major intersection to their residence. The survey used this approach to protect the anonymity of the respondent. Because people have different views on what constitutes “near” and “major” these locations are approximate. As can be seen in the following map, residents from across the city participated in the survey.

Geographic Location of Respondents



Appendix A: Full-Text of Open-Ended Responses

Respondents were asked to provide their three top priorities for the City of Pflugerville in an open-ended question. Three blank spaces were provided. This question was the first one in the survey to limit the influence of the survey instrument. In other words, putting issues and priorities into the mind of respondents. The table below lists the full text of the responses by survey mode (1 = random mail, 2 = random, online return, 3 = open survey).

Respondent-Provided Responses

Type	Priority1	Priority2	Priority3
1	Safety	Traffic	
1	development of downtown	street repairs/improvements	
1	Traffic	Affordability	Kept Clean
1	Controlled Growth	Real Estate Taxes, No Increase	Educating the Students
1	Community	Housing Price	Good Schools
1	Low Property Taxes	Mobility	Quality of Life
1	Starting mental health programs at schools	Try again with Grand Ave	Any kind of transit would be nice
1	More police in Windermere	More opportunities for PHS	Road Improvements
1	More garden plots	lowering taxes	
1	Traffic control/street planning	water quality and pressure	crime prevention
1	Roads and Traffic	Water conservation	Alternative energy use
1	Carefully managing huge population influx	not overbuilding apartments that destroy Pflugerville's beauty	Keeping the rural feel

1	Roads	Transit (Cap Metro)	Economic Growth
1	Roads		
1	Safety	Educational Opportunities	Traffic, streets and roads
1	Zero crime (low)	Schools	Trails and Parks
1	Increase sales tax base	managed growth and development	excellent quality schools
1	Improve flow of traffic in new Housing developments (Kelly Lane)	reduction in property taxes	
1	Downtown	Transportation	Diversity in business
1	Traffic management/road widening	diversity of housing	Recreation center expansion
1	Traffic Pecan Street and 685 and Dessau Corner	Traffic between Target and Pflugerville parkway	
1			
1	Parks	Traffic control	Noise control
1	Managed growth--zoning	Managed growth--transportation	Managed growth--city offices ordinances
1	Affordable housing	Recreation center	employment opportunities
1	Lower property taxes	Getting the new Domain	
1	Clean out drainage ditch to prevent flooding	street repair Parkway Dr.	

1	Traffic problems	Senior facility	Cable TV choices
1	Roads and infrastructure	Get ACC without stipulations	More art
1	Traffic	Condition or roads	Stop trying to make Pflugerville into Austin, be unique
1	Safety/police presence	cleanliness/upkeep for garbage, moving, etc.	Good places to shop/eat
1	Keep our community safe	keep our city clean	promote good businesses
1	Assist in the development of Pecan St.	Round Rock is more aesthetically appealing	Pecan by 35 is especially unappealing
1	Time the traffic lights	Fix roads, poor lane management and pavement	cut tree limbs hanging into roadway
1	Infrastructure	Business	Quality of Life
1	Infrastructure	Transportation--growth related	Public transportation
1	More downtown things	restaurants and breakfast spots	no bike lanes!
1	Road widening and improvements	Economic development	Retail development
1			
1	Dealing with apartment complex growth	Keeping existing infrastructure sound	trying to get current growth to pay for itself
1	Jobs	Dealing with high taxes	leaving open spaces

1	Transportation	Traffic	College
1	Shopping	Traffic	Property Tax
1	Lower property taxes	Lower crime rate	great schools
1	Continue infrastructure improvement	parks and leisure	school teacher/sub pay
1	Growth management	Flood Control	Public spaces
1	Traffic around 685-45-130	Better sit down restaurants	things for teenagers to do
1	People-oriented service organization	Proactive rather than reactive	safe, clean, and wholesome
1	Senior living	Road repair	Traffic signals
1	Community college	Recreation center	town center
1	Roads	Less multifamily housing	Covenants on new homes 1800 sqft minimum
1	Transportation options	ability to walk on sidewalks	quality living space
1	Stop tax incentives	stop multi-dwelling developments	do away with management corporation
1	Smart growth especially in old areas	downtown development	major employer/university
1	Traffic	City identity	
1	Safety	Health	Welfare

1	Expanding Rec centers and pools	recruiting white collar jobs (tech)	mass transit and more sidewalks
1	More police officers	more street lights	more jobs
1	Safety	Availability of stores and restaurants	services for seniors
1	Traffic	Trails	
1	Lower taxes	less low-income housing	less crime
1	Safety town/neighborhood	city services	maintaining city quality, not becoming Austin
1	Neighborhood security	street lights improvements	traffic
1	Traffic--too much	Growth--too many	schools--too many
1			
1	Education	Traffic Flow	Arts and Cultural activities
1	Education	Traffic Management	Clean, maintained parks
1	Population	Crime (safety)	Traffic
1	New lamp post @Heatherwilde and Yellow Sage		
1	Safety of residents	property taxes, affordable for residents	traffic control
1	Increase in traffic	increase in taxes	safety
1	Infrastructure/roads	lower property taxes	more shopping restaurants
1	Security (safe neighborhood)	Traffic	Space for fun

1	Traffic/public transportation	Tax rate	Rising crime
1	Traffic	Crime	Attracting business
1	Safety and crime, especially car and home burglaries	Parks and recreation	cost of water and utilities
1	Police	Roads/water/sewers	Lower taxes
1	continue to control growth	continue to diversify development	continue to build the community and small town feeling
1	Property taxes	safety	good schools
1	Repair Kelly Lane	Repair Immanuel Road	widen old Pflugerville Road
1	Safety	Preservation	Community
1	Schools	Neighborhood and Parks	Safety
1	Lower taxes for seniors	senior serving center	
1	Safety	Cleanliness	city looks drab, non-creative
1	Too many rentals in neighborhoods	too many cars parked on residential streets	too many cars parked on crosswalks
1	Employment opportunities	city planning and visioning	neighborhood quality
1	Lacking "downtown"	traffic	
1	Good drinking water	more trash receptacles	roads fixed
1	Safety	traffic management	code enforcement
1	Arts and culture (we need some museums here)	water excellence	24/7 open businesses

1	Adequate roads and traffic flow	proactively make sure roadways can handle new development	
1	Fix Gilleland Creek Flooding	Pfenning Lane	Rising property taxes
1	Paying staff well enough to keep the best employees	streets that can handle the traffic	working with TXDOT to improve intersections
1	Traffic management	Economic development	safety
1	City planning and visioning for the future	Roads/Traffic	Police/Safety
1	Traffic	Quality Education	Competent, committed law enforcement
1	Good roads	water (soft)	free swimming lessons
1			
1	Infrastructure-Roads	Improved business revenue to lower property taxes	connect feeder road on I45 between Pflugerville and Round Rock
1	safe environment	high education	moderate cost of living expenses
1	Lower property taxes	do not increase property tax	widen Kelly lane
1	Attracting more businesses	roads	lower property taxes
1	to not grow anymore	keep safer, more people, more problems	keep schools up to par
1	schools	Recreation center	city planning, create a true downtown

1	Planning for the future growth within ETJ	traffic planning	aggressive prevention of criminal activity
1	control growth--limit	improve roads	stop tax breaks for business
1	Transportation, public not private cars	infrastructure, roads for new development	long range growth plans
1	Property taxes	traffic	growth
1	Traffic congestion reduction	developing a long term plan	road improvements
1	Getting better restaurants	Traffic	Greater variety of housing
1	City beautification	enhancement to downtown Pflugerville	Recreation center expansion
1	Growth	Tax base	quality of life/recreation center
1	Tennis Courts	Keeping downtown charm	stop getting bigger
1	Traffic improvements	walkability (to amenities not necessarily sidewalks)	crime prevention
1	Gilleland Creek maintenance	New developments need retention ponds	storm water management
1	Affordable housing	schools (note overcrowded, safe)	traffic (keep levels down, not overbuilding)
1	Healthy restaurants	bikram yoga studio	zero lot line homes (not condos)
1	traffic through downtown	rush hour traffic in 685/130	lack of downtown amenities

1	Growth	Traffic	Parks
1	Lower property taxes	Safe neighborhoods/less crime	attract businesses/hotels/convention centers
1	Attract green business/retail	arts/entertainment	improve traffic flow
1	Fix roads in west park	fix sidewalks in west park	better traffic enforcement
1	Safe traffic	More local businesses	community safety
1	Lower property taxes	better control of construction projects	cul de sac drainage
1	Road maintenance	taxes	growth
1	Better planning and engineering		
1	City taxes too high	safety	timing of street lights 10th and Pecan and Railroad
1	inclusion of minorities in city government	more positive news coverage	public jogging track
1	Preserving wildflowers areas	become in-district for ACC	Build solar farm
1	Better internet services		
1	Traffic backup	no public or taxi transportation	too many apartment buildings
1			
1	lower taxes	safety and security	environmental stewardship
1	safety	affordability	employment

1			
1	Keep residents safe	keep schools at high standards	keep development smart
1	economic development	affordable housing	transportation
1			
1	Parks/trails	library	roads
1	school quality	youth facility (parks, sports, entertainment)	environment (transportation, clean energy, green spaces, recycling)
1	Parks and Recreation/Bike lanes	Traffic lights timing	keep safety #1 priority
1	property taxes	infrastructure	transportation
1	Safety and security	lower property taxes	lower utilities
1			
1	slow down on building apartments	traffic	family events
1	Become corporate headquarters for a Fortune 500 company	build a "Domain" like shopping center	lower property taxes
1	Safety	Traffic flow	green areas
1	education	preserving downtown's charm	safety/police presence
1	Crime/safety	property taxes	entertainment
1	safe place to live	reasonable taxes	good roads/utilities

1	Growth expansion control	road repair	lower city taxes
1	would love to see the pink house back to original	no more mattress stores	no more storage places
1	Transportation/Bus	Services for seniors	
1	Manage traffic	manage growth	control construction sites
1	Attract restaurants/bars/entertainment	taxes low	efficient traffic
1	lower taxes	traffic flow	trail connectivity
1	economic development	family friendly community events	education
1	Street improvements and widening	more commercial businesses to relieve tax burden on residents	more healthy restaurants besides fast foods
1	Traffic	affordable housing	activities
1	Good schools	Good roads	good parks
1			
1	stop adding section 8 apartment complexes	traffic/intersection timing	safety/truancy
1	lower taxes	improve schools	more parks
1			
1	Low taxes	major hospitals	more industry
1	lower taxes	lower taxes	lower taxes

1	Traffic	downtown development	Growth
1	Home security	Safe neighborhoods	roads
1			
1			
1	Smooth roads/more ways out of Pflugerville	Great parks, develop lake	lights on Pecan Ave
1			
1	fixing the pavement on Grand Ave that was repaired last year	code enforcement	code enforcement
1	lower taxes	bus services	clean up the scrub brush along trails and creeks
1			
1	make sure you have good trash services	keep the streets clean and mowed	have a police force that puts the citizens first
1	Roads	A good downtown area	police presence
1	downtown marketing to attract people who shop	widen and improve roads	city transit to Austin, RR and Georgetown
1	No 5G cell towers	no fluoride in the water	lower taxes
1	Jobs that pay above minimum wage	property tax too high	water
1	Sustainability	Affordability	Education

1	More activities (entertainment, restaurants, shopping)	Make downtown a destination	improve our schools (teachers and student success)
1	Keeping up with the population growth	trying to maintain a small city appearance	
1	traffic- ingress and egress to PF	Keeping small town feel/hospitality	tax rates
1	Traffic management	free tree program like Austin	Trail variety
1	Safety	recreation	streets
1	better roads	more lanes on roads	
1	Roads and infrastructure	schools	taxes
1	Professional development	property tax reductions	roads/infrastructure
1	Roads		
2	Lower property tax rates because the tax base is expanding because of recent rapid increase in residential and commercial property.	Widen roads and improve intersections where needed.	Expand/enforce city ordinances for neighborhood aesthetics.
2	crime	streets	employment
2	Growth	Retail Development	Property Taxes
2	Traffic	Education	Seniors
2	Promoting, ensuring and enforcing non-discrimination	Provide top quality emergency services	Provide high quality community services (parks, library, etc.)

	across the board (race, gender, ethnicity, sexual orientation)		
2	city beautification	retail destinations	widening roads (downtown pecan)
2	Lower taxes or minimize property tax increases.	More sidewalks	Public transportation around the city and into the Austin area
2	Safety	Good schools	Good infrastructure
2	Traffic	Road Conditions	Water Quality
2	Overcrowding	Traffic congestion	
2	Traffic	Lower taxes	Property crimes
2	street improvement	more parking for business in downtown	
2	Roads	Commercial Development	Residential Development
2		traffic control	
2	Open space	Road conditions	Police force
2	safety	health/wellness	sense of community
2	Improving Recycling Services and Renewable Energy	Encouraging Businesses to Come Here	Passing Legislation for home tax and other taxes to improve the city
2	traffic	education	growth
2	Downtown beautification - follow what RR and Georgetown have done to make our city a draw		
3	traffic	Waste water infrastructure east of 130	crime
3	Parks	Roads	Water

3	Affordability	Crime	Traffic/Roads
3	Keep up with growth	More parks	Better city offices
3	Traffic	Employment	Taxes
3	Traffic	Businesses	Parks
3	Community feel	No overcrowding with apartments/condos	Infrastructure to accommodate growth
3	Building Homes	Brining Businesses	
3	Roads	Roads	Roads
3	Widen roads with more lanes to relieve traffic congestion	Fewer traffic lights or non-stop traffic flow in and out of Austin	More than one turn lane
3	Low taxes	Bike trails & pools	Less rules
3	Rehabilitation and beautification of our Natural Creeks and Parks, no more sports complexes	More land devoted to small business retail opportunities and restaurants in DOWNTOWN	More Trees along EVERY STREET
3	Not creating two halves to the city - rich half east of toll road, poor half West of toll road. Right now with building this is what is being done. STOP the low end apartments and homes West of toll road!	No more electric, phone, cable lines above ground on poles... Burry them. Phone poles are the first sign you are driving into a low income part of town. Go to Westlake or any rich city and you will	Getting into and out of Pflugerville SUCKS! The city has grown immensely in the last decade with no improvement / expansion to get on i35 or get past i35. Just getting out of Pflugerville during rush hour can take 30 minutes making quality of life miserable. Realize it is in city of Austin but we need to do something

		never see a telephone pole.	to make them increase traffic flow through this bottleneck that makes it so I hate living here.
3	Existing roadway improvement	Seniors quality of life	Control growth
3	Intersections	Neighborhood business	Property upkeep
3	Roads - especially the repaving of neighborhoods	Better traffic control with reduced speed limits and traffic light timing	More Grocery stores
3	Education	Upkeep and expansion of parks and green zones	Community life-libraries, rec center, etc.
3	Economy/Jobs	Families	Education
3	Improve schools	Revitalize downtown	Bring more retail and jobs
3	Creating places for LOCAL businesses to come in	Traffic management including partnering with CapMetro	Educational opportunities including ACC or alternative
3	Safety	Fully Staffed Schools	Lower city taxes
3	Schools	Attract big business	Traffic
3	Roads	Police and other emergency services	Reliable utilities and city services
3	Income besides apartment buildings!	Responsive services	Creating community
3	Safety	Education	Upkeep of parks, streets, buildings etc.
3	Transportation	Entertainment	Primary employment

3	Parks & Trails	Entertainment & Retail	Schools
3	Infrastructure repair (roads, sidewalks, drainage)	Tech jobs in city	Crime rate
3	Roads/Traffic	Safety/Crime Prevention	Beautification
3	Streets	Infrastructure	
3	Annexing neighborhoods near city limits	traffic flow, traffic signal timing	
3	Eliminating monetary waste	Road improvements and repairs	Community Events
3	Smart growth	Schools to accommodate growth	Road maintenance
3	Transportation - Light rail into Austin	Expansion of Library Service - Branch near Costco	More business -domain like center
3			
3	High quality, high paying tech jobs	High quality dining/shopping	STEM education
3	Safety	Roads	Transportation
3			
3	Roads & traffic	More upscale retail stores	Really nice recreation facilities
3	Increase Public Safety	Improve roads	Increase business developments
3	Traffic flow improvements	Pecan street between Immanuel and 685	

3	Parks	Roads	Police
3	Roadway/traffic	Community events	Community center
3	Traffic	Growth	Taxes
3	Water	Zoning	Property Taxes
3	Move active with drivers speeding, creating turn lanes. It's like the wild west on the road.	Walk-ability	Bus service
3	Lower property taxes	Road paving	More sit down restaurants
3	we need things to do that are "no kids." There are plenty of "family and kid friendly" activities but, other than the bars, there is nothing for adults without kids.	restaurants with patios and shopping where you can bring your dog.	no street parking in neighbor hoods for more than 1-2 nights
3	Public transportation	Better pedestrian/bike infrastructure	ACC district
3	Roads	Rising taxes	Traffic control
3	Limit overgrowth	Improve traffic	Grow community services
3	Parks maintenance	Parks improvements	Public safety
3	smart growth	traffic	library
3	Municipal Golf Course	Keep more Green Space	Restaurants, not fast food
3	Lower property taxes	Lower property taxes	Lower property taxes

3	Reduce crime areas	Encourage assimilation, encourage English	Encourage less motor vehicle use
3	desirable development near established neighborhoods and honoring input from neighbors affected	city council and city staff that listen to its citizens about all concerns since we are the taxpayers	upkeep of trails and removal of dead trees
3	Accommodating the needs and interests of Black residents Pflugerville.	Creating an equitable school district	
3	Community		
3	Safety/crime	Improving education	Increased shopping and dining options
3	Infrastructure	Policing	Road repairs
3	Improve roads	More green space and parks	Attract more businesses
3			
3	slow growth	road repair	safety
3	Develop downtown into something interesting	Get at least one of the proposed mixed-use developments to develop like the sales pitch claims	Get a new city motto. "Where quality meets life" is generic and could apply to any city in the state. "Between a rock and a weird place" is about our neighbors and not us. Pflugerville needs an interesting brand.

3	Managing the sprawl	Improving pedestrian, bike, and public transportation	Green spaces
3	Community safety	Cleanness	Maintenance in all neighborhoods
3	Employment	Education	City planning & visioning
3	Park upkeep	Rec center	Thoughtful development in West Pflugerville
3	Schools	Transportation	Healthcare
3	Home Owner Taxes	Employment - staying business friendly	Increasing crime activities
3			
3			
3	public transportation that ties to Austin and Round Rock and overall improved traffic flow around Stonehill and Blackhawk	less multi resident housing	more local business less chains
3	Address growth concerns	Maintain parks and public use facilities	Safety at schools
3	Adequate Police Protection	Adequate Road Maintenance	Traffic Control
3	High Home Taxes	Roads & infrastructure	
3	Affordable Housing	Transportation-Public and better roads	Walkability
3	Family friendly	Downtown development	Parks

3	Make Downtown a tourist draw - like Georgetown. Bring brewery's in, leverage Brotherton's fame.	Pfluger Lake - Add another Beach site on the South shore	Look to Sugar Land for a family friendly City Hall space
3	Building Downtown area business	Rapid transit	Street repair
3			
3	Repair roads	More entertainment (live)	STOP cutting down trees
3	Transportation	Infrastructure	Economic Development
3	Unique small businesses, restaurants	Making a vibrant downtown	Incorporating Blackhawk
3	Better roads	More businesses	Better infrastructure
3	Quality schools	Smart growth	Improved transportation
3	Balanced growth (not all East of 130)	Affordable higher education option	Transportation options
3	Improved traffic conditions	More non fast food restaurants	Crime
3	Financial soundness of the city	Quality of life	Non-vehicle mobility around the city
3	traffic management	green space availability	water affordability
3	Lowering Property Taxes	Halting Hysterical Growth	Repairing PRESENT and AGING Streets
3	recreation center with indoor pool	housing	entertainment

3	Economic development	Tax Rate	Infrastructure
3	Police	Fire Department response times	Better roads
3	Running trails	Trampoline park	More schools
3	Lower taxes	Diversity training for emergency services workers	Less or faster construction
3	Keeping the transients out of Pflugerville	Stopping the "Domain" project for SH 130	Adding more police to patrol all neighborhoods
3	commercial development	sustainable growth	
3	Roads	Schools	Parks
3	Maintain green space/agricultural space	Improve traffic	Resident Safety
3	Roads	Lake Pflugerville improvements	Attracting higher paying jobs (not fast food and retail)
3	Fix Grand Ave streets	Events for seniors in the evenings and weekends	Create right lane turn lane on Grand Ave going east onto Pflugerville Pkw
3	Lower Property Taxes	Manage Growth	Infrastructure improvements
3	a health food store	more healthy restaurants	wildlife and animal control
3	stay small	fix the streets	senior activities
3	New business development	Events and Creating a unique community identity	Infrastructure

3	Public Safety	Affordable taxes	Great Schools
3	Maintain what is already here	Build a family friendly environment	Expand
3	better mobility infrastructure	reduced taxation	reduced subsidization of development
3	Traffic	Shopping options	Taxes
3	Road Improvements	Entertainment District	Attract Large Employers
3	Improving roads in/around neighborhoods	Trimming trees blocking sidewalks	new ACC campus
3	Kelly Lane improvements	Protect property values	Continue excellent community programs/partnerships
3	education	animal shelter	growth
3	Encouraging businesses to move here / grow economy	Make walkable/inviting areas	Maintain/improve roads and parks
3	Decrease sales tax	Decrease property tax	Decrease city fees
3			
3	roads and infrastructure	keep taxes down	enforcing city ordinances and codes
3	taxes	water	growth
3	Metro Transportation	Public Parks	Community Spirit
3	Citizens	Streets	Safety
3	Responsible Growth	Lower taxes	Destination city
3	Traffic control and expansion	Crime prevention	Diversity in business

3	Traffic	Road Maintenance	Cleanup of Trash
3	A vibrant downtown	Beautiful parks and trails	Additional entertainment and restaurants
3	Fix traffic problems	Have more officers patrol neighborhoods prevent crime and speeders in neighborhoods I'm afraid for my children to play outside in front and my husband walk kids to school and says cars don't mind pedestrians (in Gatlinburg subdivision)	Bring more family engage activities/community events
3	Controlled Growth	Crime and Safety	Traffic
3	Police	Schools	Roads/growth
3	Addressing growth	Traffic	Homeless population
3	Property tax relief	Windermere water prices	Revitalize downtown
3	Infrastructure	Roads	Annex ETJ
3	Lowering Taxes	Increasing economic opportunities	Inflation of costs in infrastructure, education and real estate
3	High taxes	TOO MANY apartments!	Traffic/Roads conditions
3	Safety	Parks	Traffic
3	Roads	More schools	Annex Avalon and east to get tax \$

3	Taxes	Roads	Construction
3	Roads/Infrastructure	Public safety	Public events
3	Downtown Revitalization	Creating Identity	Multi Use Development to increase tax base
3	Transportation	affordable housing	Infrastructure improvement
3	New business recruitment	Taxes	Traffic
3	Good roads	Sidewalks for areas that do not have sidewalks	continue with great parks
3	Roads and intersections expansions (Kelly Ln, Weiss)	Extend Typhoon Texas	
3	Drivability	Education	Community
3	Reduce property taxes	Reduce regulations	Reduce the number of civil citations issued by police
3	Road Improvements/Traffic	Development	Crime Management
3	Parks and recreation	Public transportation	Get rid of southwest water!!
3	education	security	infrastructure
3	attracting better businesses/restaurants etc.	more parks	traffic
3	Lower Property Tax Rates	Add no new taxing authorities (ie: no ACC)	No tax incentives - Make business pay their full share of taxes
3	Increase revenue	Tax base	Education

3	Roads	Bringing non-retail/food service jobs to the city	public safety
3	Schools	Roads	Crime Prevention
3	Library	Pool	Rec Center
3	Safety - Crime, Police, EMS	Education	Parks and Recreation
3	Safety	Thoughtful Development	Education
3	Crime prevention	Lower taxes	Public safety
3	Public safety	Roads	Entertainment
3	Safety	Schools	Business develop
3	Organizing growth	Continuing to have a safe city	Lowering taxes
3	Traffic	Businesses	Schools
3	Education	Taxes	Growth
3	Safety	Lower taxes	Roadways
3	Transportation	Education	Parks
3	Lower property taxes	Maintaining small town feel even with current growth	Police
3	Bike lanes	Better roads	Trails connecting to Lake Pflugerville from downtown
3			

3	Protect green spaces	No more apartments buildings	Ban cellphone use while driving, some people is even watching Netflix and driving
3	Quality of life	Strategic Planning including all stakeholders, control development	Roads, infrastructure, water, to meet current needs
3	Bringing in big commercial companies	Schools	N/a
3	Water quality	Open space, parks	Mixed use growth
3	Be an out and proud sanctuary city for immigrants mainly, but also for any group facing discrimination.	Require all new construction to first build extra roads, lanes, install lights or any other items needed to help the already horrid traffic issues in Pflugerville.	Keep the lines of communication between police/gov open. Currently they are awesome and just want them to stay that way. Seeing officers in the neighborhoods and at events before there is a need is awesome.
3	Lower property taxes	Extend service road along 45 and 130	Ease traffic congestion
3	public safety	public school quality	public transportation availability
3	Lower property Taxes	Be proactive with increasing traffic congestion	Lower Property Taxes
3	Traffic	Roads	Growth
3	continue business development efforts	public transportation linked to Capital Metro	redouble efforts to get reduced tuition at ACC

3	roadway's to keep up with traffic	animal control having expanded operating hours	better flood control measures
3	Cleanliness	Conservation and Maintaining Green Spaces; more trees needed! Less construction and concrete!	Security and crime reduction
3	Types of businesses	Transportation (roads and mass transit)	Programs for kids/ family
3	Saving meadows and trees	Saving animal habitat	Night Police patrol at Limestone/Commercial Drive area
3	Schools	Green space	Slow down development
3	Lower resident taxes	Slow development for two years	
3	Managing growth	Bringing in good businesses	ACC
3	Ensure that roads/transportation keeps up with growth (minimize bad traffic)	Keep downtown where it is and invest in parking garage and local business	Keep connecting parks and trails, especially connect the Lake to the larger trail system W of 130
3	Continued excellence in essential services by city departments, including streets, public works, police.	Recreational and family-oriented resources like the library, parks, Rec center, and local businesses.	Services and resources to low-income residents and the homeless population.

3	Have a one-year moratorium on building, ALL building!	Repair and take care of what the community already has. We are a wonderfully unique community.	Please operate from loving common sense, and NOT greed!!!
3	Safety	Smart Growth	Employment
3	Safety	Cleanliness	Culture
3	Safety	Cleanliness	Culture
3	Road	Parks	Schools
3	Street maintenance		
3	Traffic Management	Green Space Development	Growth Planning
3	Growth management	Infrastructure	Workforce development
3	library	better traffic flow	parks
3	safety	safety	safety
3	Tax Base Reductions through Continued Growth	Scaling Infrastructure for Growth	School Improvements
3	road maintenance		
3	road construction	new businesses	programs and services
3			
3			

3	lower the water rates for those residents that are stuck with Southwest	bring in more local shops	more entertainment options
3	Bring In Business To Reduce Property Taxes	Improve Downtown	Reduce Traffic Congestion
3	Infrastructure - repairs	Infrastructure - design & management	Growth - Housing Issues
3	Quality of living/amenities	Preservation of Historical elements	Common sense attitude toward growth
3	More Bike Lanes/Paths		
3	Complete access road along TX45 between Schultz Ln and Heatherwilde	Expand bike lanes for safer travel along Heatherwilde, Pflugerville Pkwy	Expand dining/shopping beyond Stonehill
3			
3	Stop inviting growth	Stop people from moving in	Stop raising my taxes
3	Safety/ enough police	Roads	Lake patrol.
3	Safety - lower the skyrocketing crime rate	Build single family homes - enough apartment/condo/rental communities	over development - expansion rate too high
3	Education	Affordable housing	Affordable health care
3			

3	Safe roads/traffic	Good education/schools	Reasonable property taxes
3	Taxes	New businesses	Parks
3	We need good jobs here - not commute to other cities (business growth)	Heavily taxed but no infrastructure - how about public transport	Population is growing faster than the roads and getting dangerous in some locations
3	Infrastructure/Roads	Larger businesses for sales tax growth	Downtown Revitalization/Move City Hall
3	Improving roads and mobility through the area	Responsible growth of commercial development to expand the tax base and help take more of the burden off of homeowners	Public safety
3			
3	Widening roads ahead of projected growth	Continuing family activities/events and expanding to additional/new ones (especially at the lake)	Seeking additional non-chain, non-fast food restaurants for growth
3	Roads	Roads	Safety
3	Public safety - police, fire, EMS	Infrastructure	Utilities
3	safety	good schools	organization
3	Family friendly	Community atmosphere	Education system
3	Taxes - keeping them low	Roads - infrastructure	

3	Better roads	More affordable housing	A slow down on growth
3	More reasonable taxes	More openness from city government in all areas	Taking roads/traffic patterns into consideration when approving new building projects
3	long term road and transportation masterplan	Infrastructure Maintenance	Class A office space development for growth
3	Keeping up with rapid growth - roads, schools and infrastructure	Maintaining quality of life for citizens while expanding the city	protecting the citizens of Pflugerville by expanding emergency services and response times
3	Fix Kelly Ln	Lower taxes	
3	Health	Education	Environment
3	Accessibility (roads)	Retail shopping	K-12 education
3	Because there is no elevation the City needs to improve the appearance of main corridors to attract new business		
3	Crime	Traffic	
3	First responders	Roads	Public transit
3	Family friendly	Jobs	Security
3	Filling empty commercial buildings BEFORE building new	Stop approving lower end communities	
3	Low taxes	Parks	Library
3	Street improvements and widening	Parks	Add restaurants
3	Baseball/Softball facilities		

3	City maintenance	Job growth	Thoughtful management of city growth
3	Closer review and assessment of new businesses with less tax incentives for new businesses	Affordable housing	Road maintenance and traffic assessments leading to new/improved roads for better mobility
3	pot holes in neighborhoods	speed limits too high in neighborhoods approaching intersections	need more signal lights
3	Gilleland Park pool/bathrooms	Law enforcement	Small business/family friendly
3	Employment options	Good sit down restaurants - not fast food	allowing code compliance to write citations for repeat offenders
3	police department	traffic	paying tolls that shouldn't exist
3	Restaurant/shopping district	Covered playgrounds	Water activities
3	Revitalize downtown Pf	Make Pf more walkable. Connect sidewalks and trails	Fix accident prone roadways to reduce collisions
3	Gill a land pool upgrades and maintenance	Little league fields	Windermere Pool
3	Taxes	Overcrowding	Parks and recreation
3	Traffic safety	City beautification	Wise and purposeful city planning
3	Schools	Traffic	Growth

3	Tax base, no more unwarranted incentives	Parks, taking advantage of and highlighting parks system and linking them all through a comprehensive plan	New, high end, development, both commercial and residential
3	Safety	Family activities	Transportation
3	Street widening	Senior housing	
3	Reduce Taxes	Education	Shopping and Dining
3	Property Tax reduction	Organic (not forced) growth	Business welcoming
3	Traffic	Safety	Overcrowding
3	Housing zoning (multi vs single)	Waste solution for growth	City service expansion to meet growth need
3	Road quality	ACC	
3	Lower Taxes	Improve Public Safety	Increase parks and rec., open spaces
3	Property taxes	School district	Roads
3	Roads	Safety	Affordability
3	Senior citizens	Downtown	Growth
3	Safety		
3	Lower taxes	Lower taxes	Lower taxes
3	Improving quality of education and schools	Improving infrastructure, specially library, rec center	Better public transport

3	Roads	Traffic	Schools
3	Less apartment complexes	Better restaurants	Low taxes
3	Community	Swim Team Pool in the 1849 park	traffic
3	Indoor swimming facility		
3	Improved traffic flow	Community Growth - downtown & 130 entertainment/recreation	Parks & Rec, additional pool
3	Traffic	Green spaces	ACC access
3	Infrastructure	Growth management	Community identity
3	More businesses	Continued great schools	More jobs
3	Advocating public schools	City planning for community centered business	Building a public pool on the NE side of 130
3	Traffic	Safety	Cost of living
3	Lower taxes	Better traffic	Lower taxes
3	Safety	Cleanliness	Beautification
3	Economic development	Streets	Lower taxes
3	Traffic		
3	Roadways- we need to plan for growth, especially along Kelly Lane	Keeping schools up to date	

3	Traffic	Tax rate	Growing tax basis
3	Commercial development	Infrastructure upkeep	Traffic improvement around Stonehill
3	Traffic	Streets	Responsible growth
3	More transportation options	Downtown area - restaurants, shops, etc.	Safety
3	Smart Growth	Safety	Fiscal responsibility
3			
3	Stable power when storms happen	No more mattress stores	Teachers pay
3	Stop lights on Kelly Lane	Beautifying downtown	Bring in more restaurant's
3			
3	Commercial development planning	Elected leadership	Crime/safety related to proximity to Austin
3	Taxes	Growth	Safety
3	Traffic management	Attracting tax revenue generating businesses	Helping local businesses thrive
3			
3	Traffic	Property tax relief	Higher education options
3	Safety	Recreation	Youth
3	Bike lanes	Traffic at Stonehill	More roads
3	Infrastructure	Taxes	Environmental

3	Restaurants	Parks	Businesses
3			
3	less crime	Better sit down restaurants	downtown revitalization
3	Traffic mobility, turn lanes people turn lanes	More businesses along Pecan St. high tech and restaurants	Lowering taxes
3	Taxes	Cost of living	Low rated schools
3	Commercial Development	Transportation relief	Tourism
3	Downtown	No more apartments	Traffic
3	Property Tax Reduction	Mass Transit	Economic growth
3	Roads	Small local owned business	Education
3	Infrastructure	Economic growth	
3			
3			
3	Parks and conditions	Parks	Safety
3	Manage new growth	Manage traffic due to new growth	Property taxes
3	Road development	Road development	Road development
3	Education	Safety	Affordable housing
3	Roads	Better restaurants	Community engagement

3	Traffic	Safety	Taxes
3	Lower property tax		
3			
3	Safety	Traffic	Reducing taxes
3			
3	Police	Entertainment	Commerce
3	Proper growth	Roadways	Schools
3	Roads	Schools	Cross walk at Kelly In and Falcon Pointe blvd
3	Safety	Road improvements	Better water
3	keep parks clean and safe	traffic flow and safety	bringing in new businesses
3	Taxes	Infrastructure	Development
3	Traffic	Taxes	Education
3	More quality sit down restaurants	Lower property taxes	
3	Develop vibrant downtown	Lower property taxes	Bring in major tech company
3	Good schools	Safety	Affordable taxes
3			
3			
3	Streets/ to improve traffic flow	Bringing more great businesses to our town	Upgrading out municipal buildings

3	public transit from Stone Hill to Austin	Traffic	Bike Lanes
3	Schools	Taxes	Transportation
3	Economic Development	Transportation relief	Downtown revitalization
3	Parks	Local business	Congestion
3	Roads	Increase Business Tax base	First Responders
3	Safe	Affordable	Clean
3	Local traffic congestion	Kelly Lane widening	Upscale shopping and dining
3	Lower property taxes	Improve roads/ reduce traffic congestion	City pools
3	Traffic	Small Business Development	Schools
3	Kelly lane road expansion	Cameron road rework	
3	Safety	Schools	Convenience
3	Traffic	Roads	Schools
3	Renewable energy	Bike lanes	Security (crime)
3	Traffic	Safety	Property taxes
3	More restaurants and shopping. Population is growing so much, there are not enough to support our citizens.	Roads and traffic. Congestion is crazy.	No more apartments!!

3	Crime	Traffic flow	Planning and visioning
3	Roads	Golf course-green space	Public safety
3	Power grid	Traffic flow	Original Population consideration
3	Infrastructure	New businesses	
3	Education	Road widening/repair	Higher end retail
3	More stores like Old Navy, Bath and Bodyworks etc.	Better restaurants, not fast food	
3	Residential tax review	Infrastructure, roads and utilities	Crime prevention and accountability
3	Reducing property taxes	Increase sales tax revenues by bringing more business local	Improve road conditions on public streets
3	Taxes	Schools	Roads
3	Downtown	Roads	Downtown
3	Park spaces	Roadway improvement to alleviate traffic	Zoning regulations that keep commercial entities far away from residential
3	Better roads	Downtown feel	Less industrial
3	clean up commercial property neglect	proactive annexation of ETJ	traffic management
3	Swim Facility	Traffic Improvements	
3	Lower Taxes	Improve Roads and Sidewalks	Attract businesses to help pay taxes

3	Downtown development	Quality School district	Access to great entertainment and restaurants without having to leave Pflugerville
3	Parks and recreation	Street cleaning services in neighborhoods (I.e., sweepers)	Sidewalks and Bike Lanes
3	School	Jobs	Housing
3			
3	Safety	Education	Parks and Recreation
3	Lower property taxes!		
3	Growth	Taxes	
3	Stop giving away tax breaks to businesses to lure them to Pflugerville	Stop raising taxes and blaming it on the County Assessments	
3	Pfluger house plaza entertainment area		
3	Road engineering	Road maintenance	The growing community
3	Manage growth	Recreation	Safety
3	Education	Safety	Parks
3	Lower property taxes	Stop building apartment buildings that end up lowering the school quality	Lower the increasing crime rate
3	Roads	Crime	Education

3	positive growth throughout city -- especially on the west end (not everyone lives east!)	I know ACC was voted down, but I really think an affordable higher education option is important to a city our size (and growing)	Park space. Pflugerville has some great parks and trails. As the city grows so does the park system. Also the trash situation at Lake Pf needs to be addressed.
3	Consider needs of present residents rather than how much rental property you can bring in		
3	Traffic light at Immanuel at Wells Branch	Less new apartment megaplexes, more single family homes	Adding sidewalks and bike lanes
3	Road condition	Prevent tax increases	Welcome all private businesses to further boost local economy