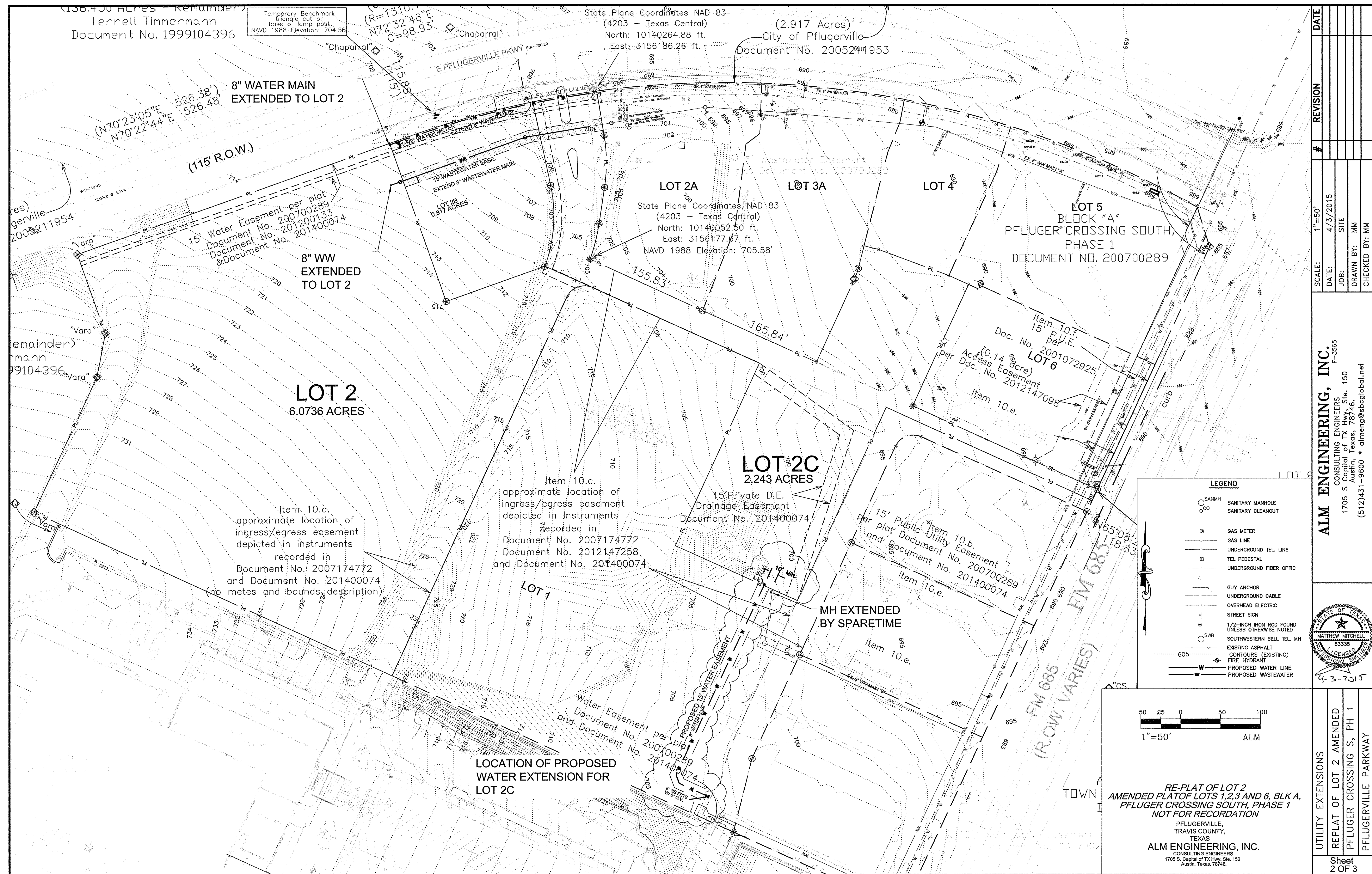
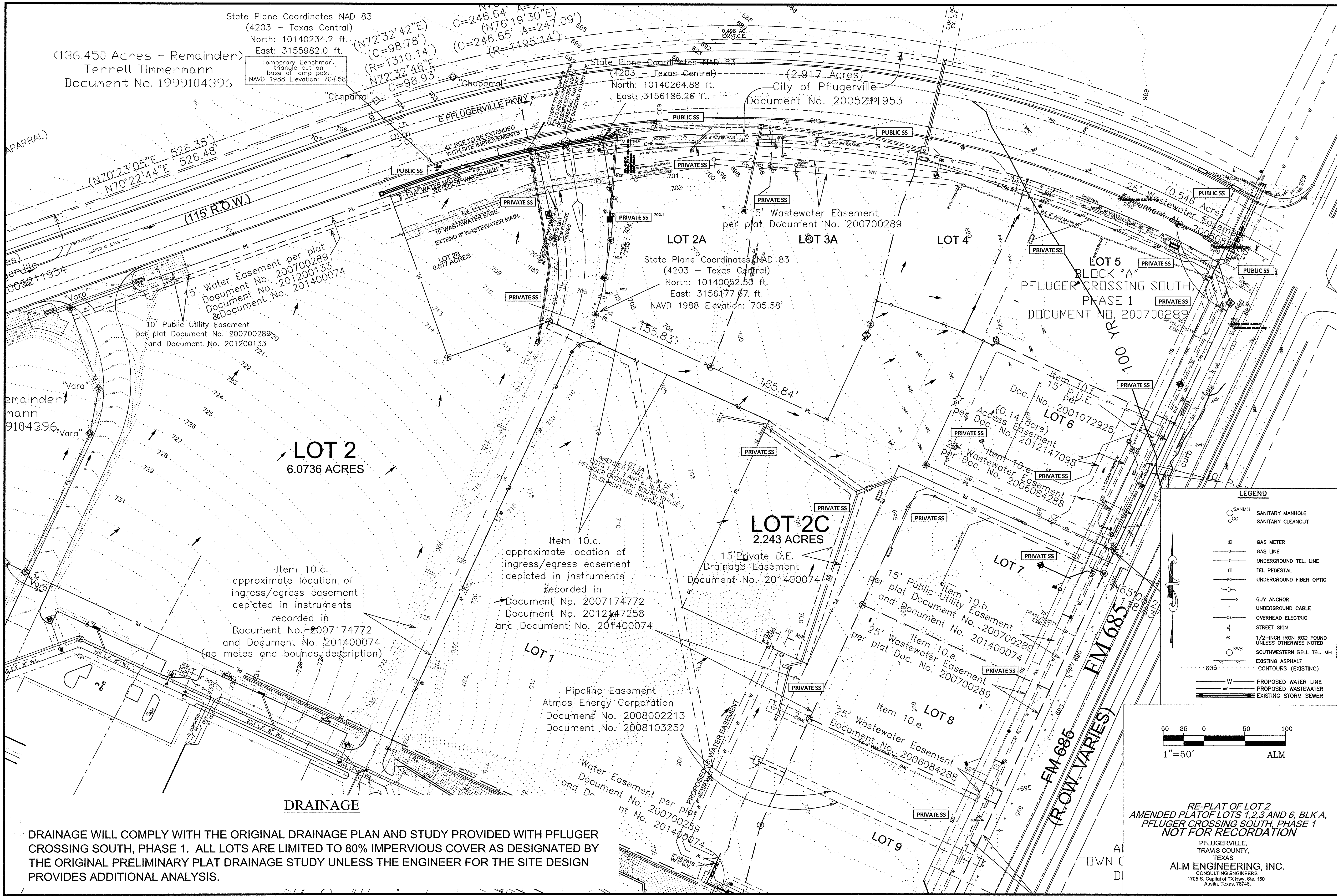


4-3-2015



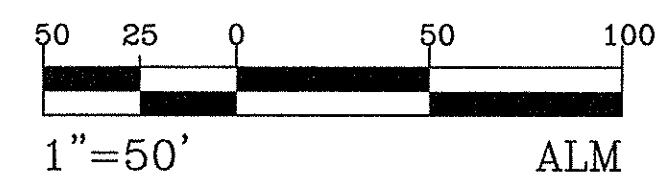


State Plane Coordinates NAD 83
(4203 - Texas Central)
North: 10140234.2 ft.
East: 3155982.0 ft.
(136.450 Acres - Remainder)
Terrell Timmermann
Document No. 1999104396

State Plane Coordinates NAD 83
(4203 - Texas Central)
North: 10140264.88 ft.
East: 3156186.26 ft.
(2.917 Acres)
City of Pflugerville
Document No. 2005291953

State Plane Coordinates NAD 83
(4203 - Texas Central)
North: 10140052.50 ft.
East: 3156177.67 ft.
NAVD 1988 Elevation: 705.58'

- LEGEND**
- SANMH
 - SANITARY MANHOLE
 - SANITARY CLEANOUT
 - GAS METER
 - GAS LINE
 - UNDERGROUND TEL. LINE
 - TEL. PEDESTAL
 - UNDERGROUND FIBER OPTIC
 - GUY ANCHOR
 - UNDERGROUND CABLE
 - OVERHEAD ELECTRIC
 - STREET SIGN
 - 1/2-INCH IRON ROD FOUND UNLESS OTHERWISE NOTED
 - SOUTHWESTERN BELL TEL. MH
 - EXISTING ASPHALT
 - CONTOURS (EXISTING)
 - W PROPOSED WATER LINE
 - WW PROPOSED WASTEWATER
 - EXISTING STORM SEWER



RE-PLAT OF LOT 2
AMENDED PLAT OF LOTS 1, 2, 3 AND 6, BLK A,
PFLUGER CROSSING SOUTH, PHASE 1
NOT FOR RECORDATION

PFLUGERVILLE,
TRAVIS COUNTY,
TEXAS
ALM ENGINEERING, INC.
CONSULTING ENGINEERS
1705 S. Capital of TX Hwy, Ste. 150
Austin, Texas, 78746.

DRAINAGE WILL COMPLY WITH THE ORIGINAL DRAINAGE PLAN AND STUDY PROVIDED WITH PFLUGER CROSSING SOUTH, PHASE 1. ALL LOTS ARE LIMITED TO 80% IMPERVIOUS COVER AS DESIGNATED BY THE ORIGINAL PRELIMINARY PLAT DRAINAGE STUDY UNLESS THE ENGINEER FOR THE SITE DESIGN PROVIDES ADDITIONAL ANALYSIS.

DATE		REVISION	
		#	
SCALE:	1"=50'		
DATE:	4/3/2015		
JOB:	SITE		
DRAWN BY:	MM		
CHECKED BY:	MM		

ALM ENGINEERING, INC.
F-3565
CONSULTING ENGINEERS
1705 S Capital of TX Hwy, Ste. 150
Austin, Texas, 78746.
(512)431-9600 * alming@abglobal.net

STATE OF TEXAS
MATTHEW MITCHELL
83335
LICENSED PROFESSIONAL ENGINEER

9-3-2015

DRAINAGE	REPLAT OF LOT 2 AMENDED	Sheet 3 OF 3
	PFLUGER CROSSING S, PH 1	
	PFLUGERVILLE PARKWAY	