

2021-0570

Discussion regarding the future of composting at the Central Wastewater Treatment Plant

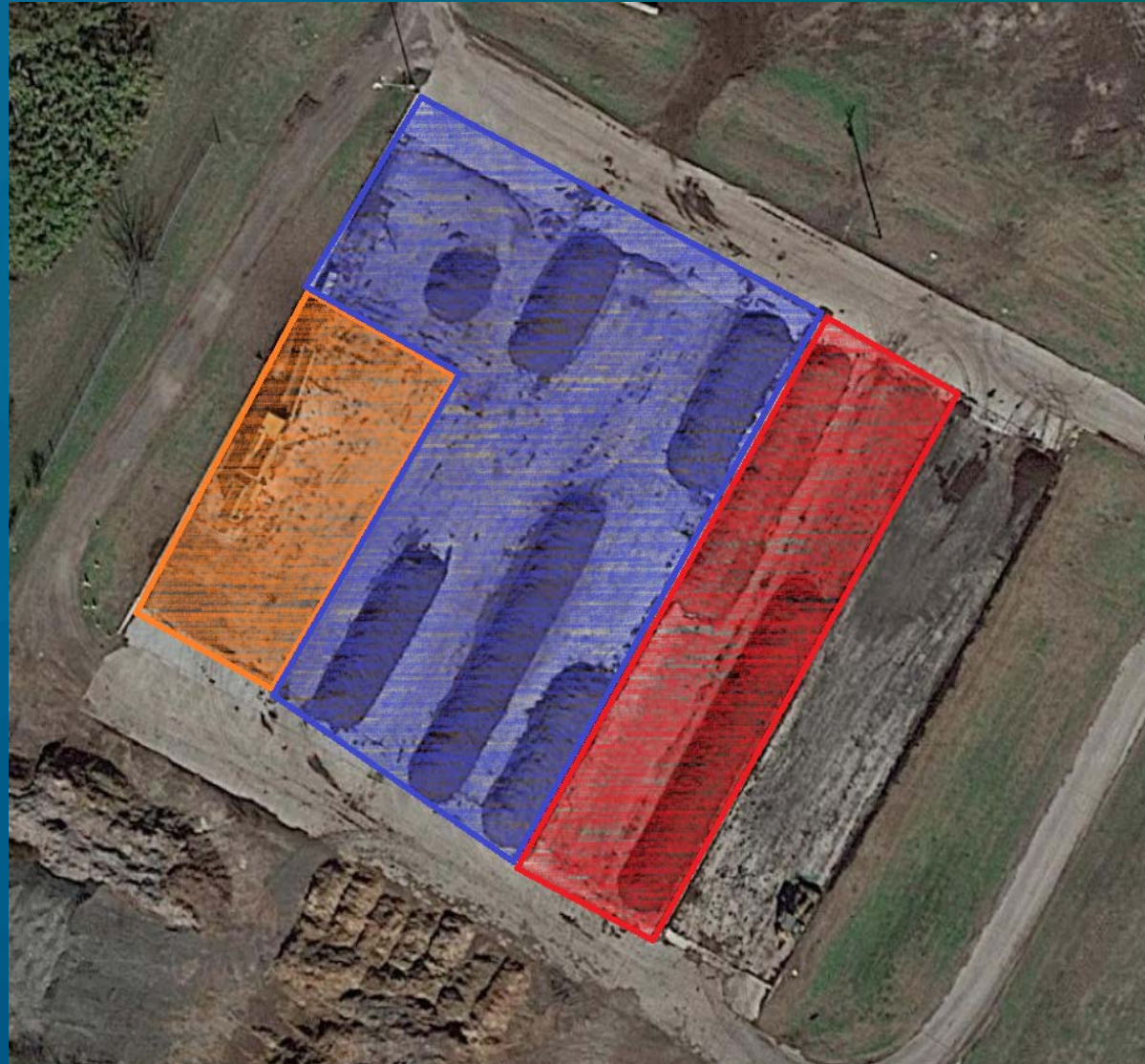


Current Composting Operation and Challenges

- Ineffective and Aging Equipment
- Time
- Pile Quality
- Odor



City of Pflugerville Compost Area



Sifting Area 
6,600 ft²

Compost Area 
24,000 ft²

Sludge Staging Area 
10,000 ft²



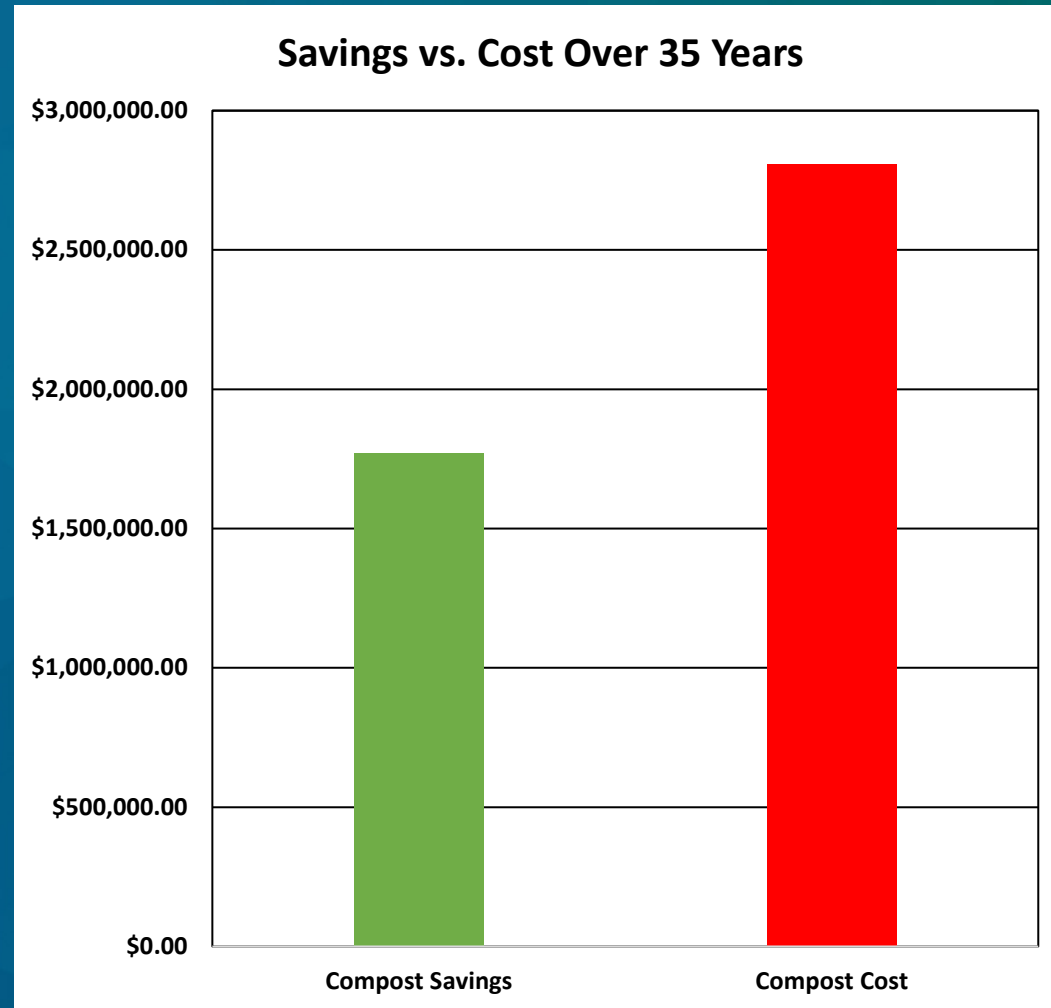
City/Treatment Plant	Landfill	Haul to Compost Facility	Class B Product	Heat Pellitization	BioGas	Windrow	Other Compost
City of Pflugerville		X				X	
City of Round Rock (BCRWWTP)		X					
City of Leander		X					
City of Hutto		X					
City of Austin						X*	
City of Cedar Park		X					
City of Manor		X					
City of Temple/Belton		X					
City of Denton						X	
SAWS							X
City of Fort Worth							X
Trinity River Authority			X				
City of Houston	X		X				
City of Dallas			X		X		
City of Waco				X			
Woodlands (SJRA)	X	X					
Bryan/College Station	X	X					

How Do We Compare?



*3rd Party Contractor

Windrow Compost Savings vs. Capital Cost



Options Moving Forward

1. Discontinue composting operation.
2. Continue moving forward with existing equipment.
3. Purchase new equipment in FY2022 - \$950,000.



Questions?

