

2021-0131

Discuss and consider action to approve a Professional Services Agreement with MWM DesignGroup, Inc. in the amount of \$92,500.00 for professional architectural and engineering design services associated with the design of required structures at Gilleland Creek Park Pool and authorizing the City Manager to execute same.



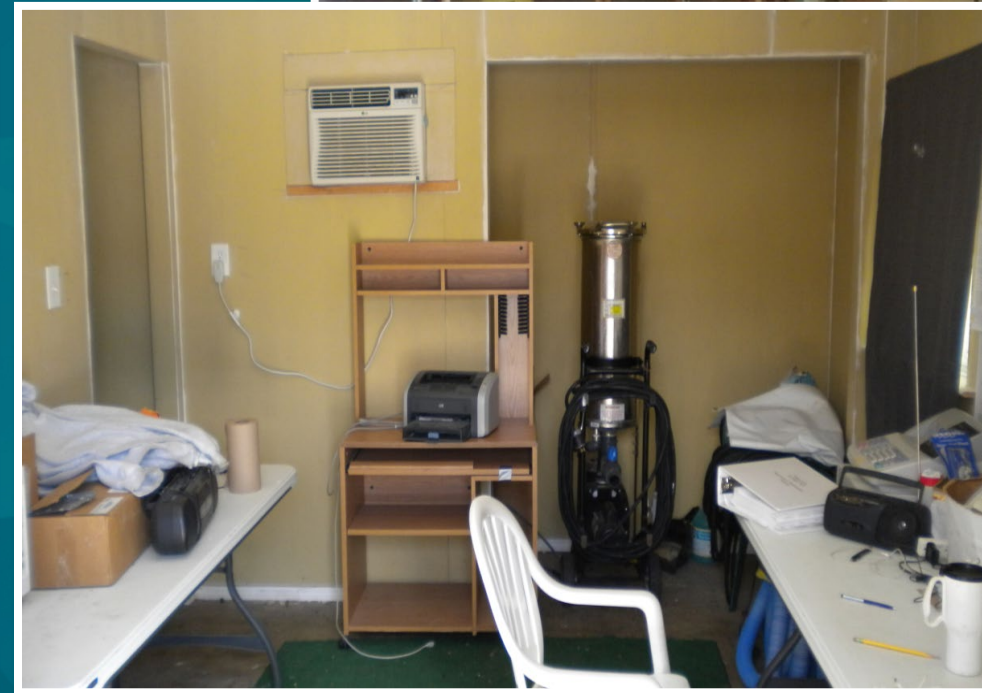
Gilleland Creek Park Pool Bathhouse Scope of Services

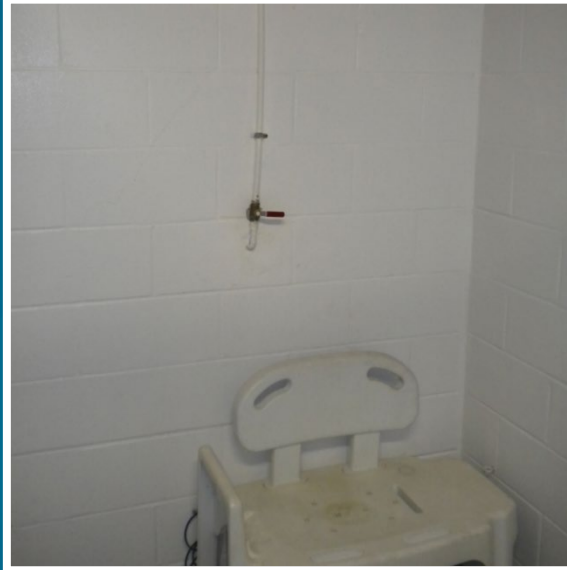
- Provide A/E Services to construct a new restroom/shower and ticket, concession, guard office facilities at the pool.
- Civil Engineering Services will continue through existing agreement with Waeltz-Prete.
- Site Design and Permitting – Site, Construction and Floodplain Construction.
- Current schedule will allow the pool facility to reopen early summer of 2022.
- Available additional services, by supplemental agreement, will include: Landscape Architectural Services and Construction Administration.



Overview

- Gilleland Creek Pool is in the floodplain of Gilleland Creek and is subject to continued occasional flood inundation, the facility has been inundated twice in recent history October of 2013 and Memorial Day 2015.
- The pool has the highest attendance of the City's pools as a heated lap lane facility and is open to the public all year.
- The current structures are considered unusable due to flood damage, accessibility issues, plumbing failures, structural issues and unsafe conditions.





Overview Continued

- The pool and deck are approximately 2' below the current Base Flood Elevation. Current discussions will have the floor elevation of the buildings at or above the base flood elevation and will be flood proofed up an additional 2' per code.
- New proposed buildings will be more user friendly with the ticket office area closer to the parking and more accessible while also improving the views of staff to the pool and deck.
- There is currently approximately \$1.1 million budgeted for the design and construction of this project. Funds that were previously reallocated from other park projects.



Background Information – Project History

- This PSA is a reauthorization of an expired contract with MWM for architectural design services for four parks, including Gilleland Pool, from 2015, the scope of services for the contract were not completed and the contract was let expire in 2017, with \$92,500 remaining.
- 2018 – The pool shell was replastered, and the pool equipment and plumbing was replaced for approximately \$800,000.
- 2019 - Delivery method for the project was changed to Pre Fabricated structures.
- 2020 – City Council took no action to award the Pre Fabricated structures, citing a concern for cost and value.
- 2021 – Present a revised A/E Proposal with MWM DesignGoup for design of on site constructed structures with construction complete for summer of 2022.
- A supplemental agreement will be required to provide Landscape Architectural and Construction Administrative services as the design progresses and prior to final design.



Gilleland Creek Park Pool

Preliminary Schedule

DESIGN PHASE

- Schematic Design 2 weeks April 19 – May 3
 - City Review
- Design Development 3 weeks May 4 – May 25
 - City Review
- Construction Documents 3 weeks May 25 – June 15

PERMITTING

- Permitting Process 12 weeks June 1 – August 24

BIDDING AND AWARD

- Bid and Award Contract 6 weeks July 15 – August 26
- Award Contract September 14

CONSTRUCTION

- Construction Phase 32 weeks September 20 – May 2
- Close out 2 weeks May 2 – May 13

Projected Schedule of Activities



Staff Recommendation

Approve action to approve a Professional Services Agreement with MWM DesignGroup, Inc in the amount of \$92,500.00 for professional architectural and engineering services to design and prepare construction documents for the Gilleland Creek Pool facilities and authorizing the City Manager to execute same.

