



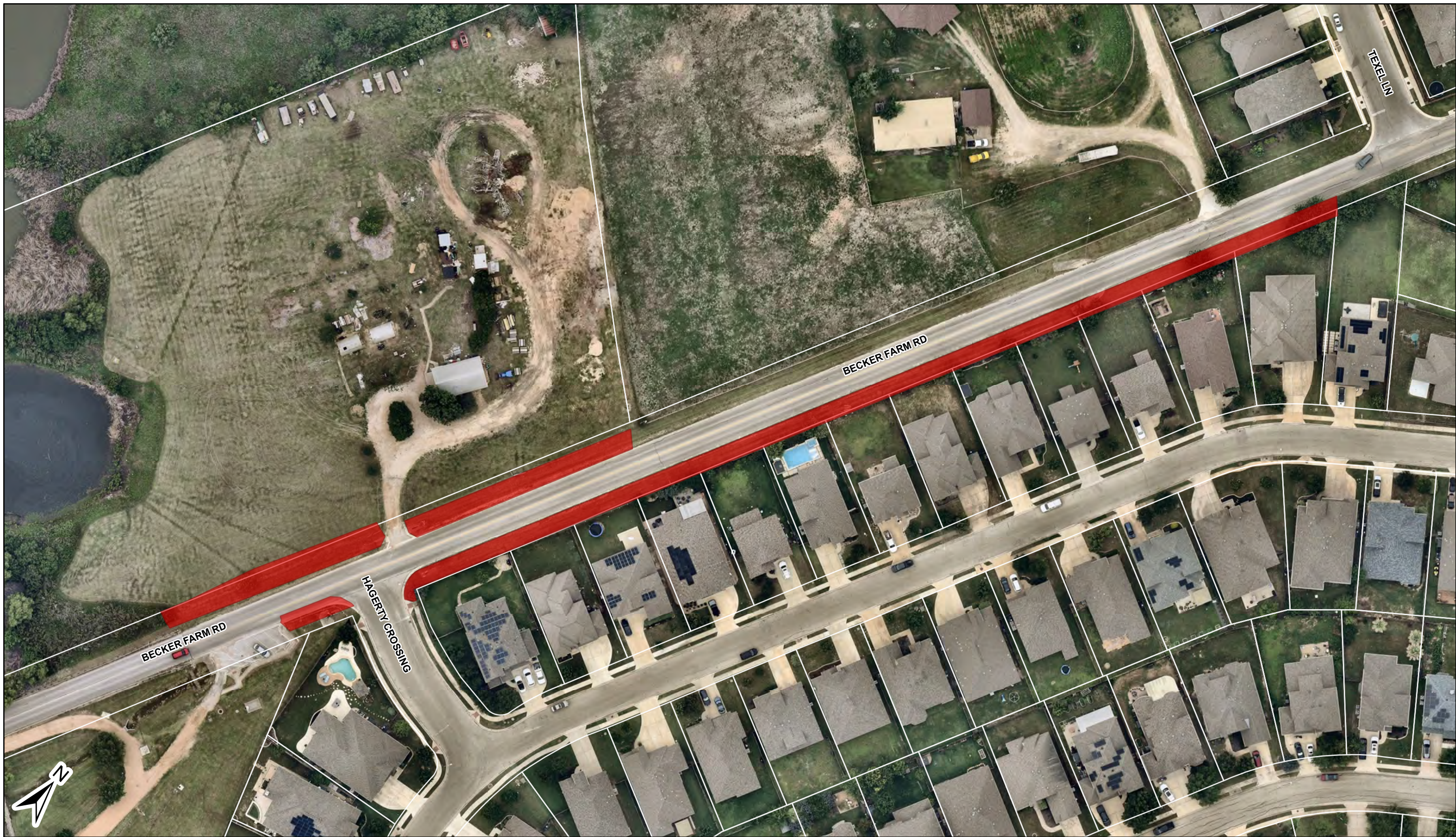
ROW1
S 10TH ST
(MOUNTAIN VIEW DR TO SETTLERS VALLEY DR)

0.4 ACRES



ROW2 AW GRIMES BLVD

1.0 ACRES



ROW3 BECKER FARM RD

0.5 ACRES



**ROW4
BILTMORE AVE, HELIOS WAY, AND SUN LIGHT NEAR WAY**

6.0 ACRES



ROW5 BLACK LOCUST DR

0.6 ACRES



ROW6 COLORADO SAND DR
(COPPER MINE DR & AUTUMN SLATE DR)

1.5 ACRES



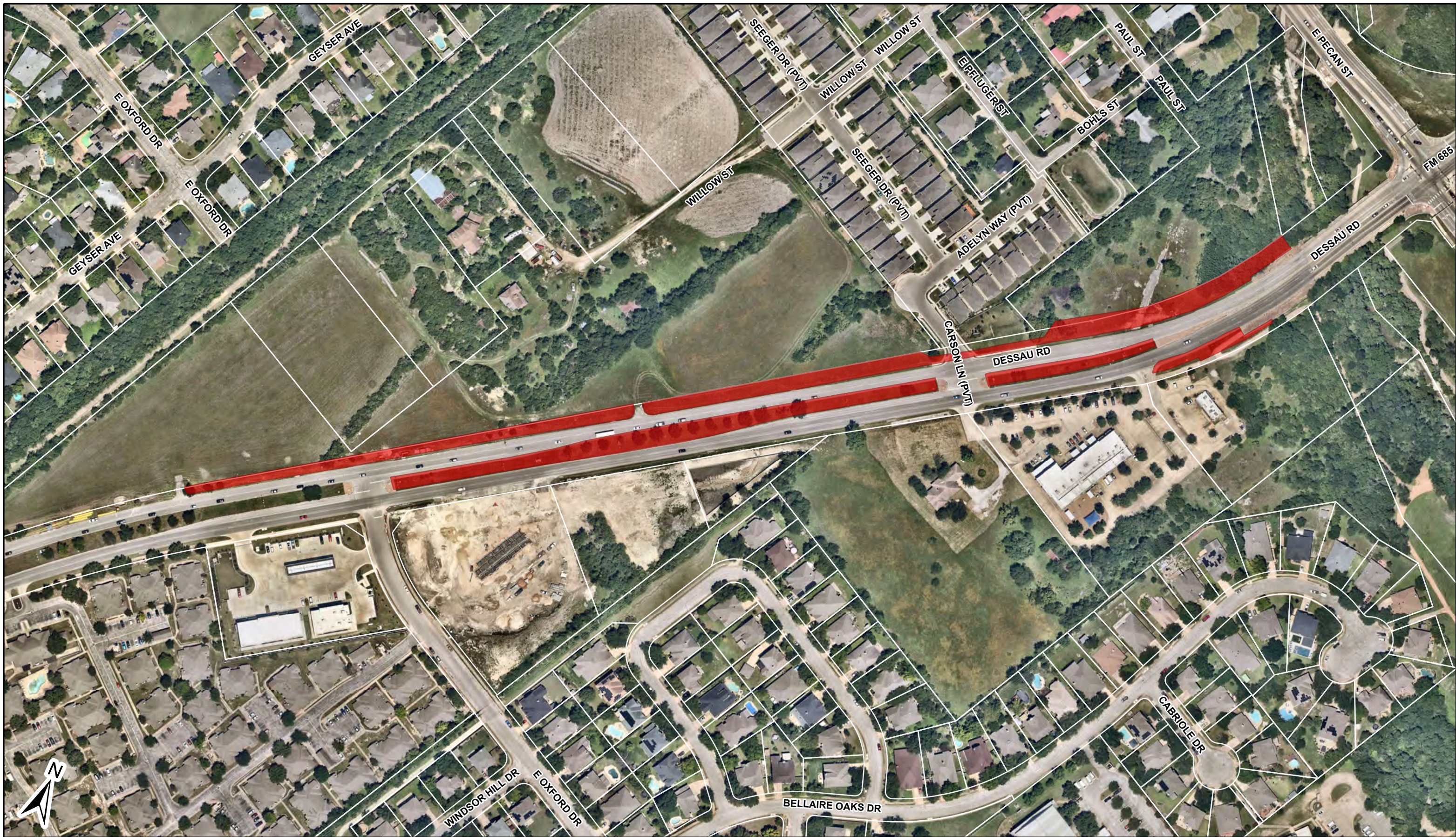
ROW6 COLORADO SAND DR
(SOUTH OF COPPER MINE DR)

3.4 ACRES



ROW7
DESSAU RD
(E OXFORD DR TO ST CROIX LN)

6.7 ACRES



ROW7

DESSAU RD
(E PECAN ST TO E OXFORD DR)

2.7 ACRES



ROW9 **E PECAN ST**
(DESSAU RD TO PLUMBAGO DR)

2.6 ACRES



ROW9

E PECAN ST
(E PFENNIG LN TO SH 130)

5.0 ACRES



ROW9

E PECAN ST
(FM 685 TO N RAILROAD AVE)

1.9 ACRES



ROW9

E PECAN ST
(SH 130 to CAMERON RD)

1.4 ACRES



ROW10 E PFLUGERVILLE PKWY
(FM 685 TO PFLUGER FARM LN)

2.5 ACRES



ROW11

E PFENNIG LN
(AT E PECAN ST)

0.7 ACRES



ROW11

E PFENNIG LN
(ROCKY CREEK DR TO JUSTICE CENTER)

1.2 ACRES



ROW10 E PFLUGERVILLE PKWY
(FM 685 TO COLORADO SAND DR)

3.8 ACRES



ROW10 **E PFLUGERVILLE PKWY**
(COLORADO SAND DR TO BALATON BLVD)

4.5 ACRES



ROW10 **E PFLUGERVILLE PKWY**
(GREAT BASIN AVE TO N HEATHERWILDE BLVD)

1.7 ACRES



ROW10 E PFLUGERVILLE PKWY
(PFLUGER FARM LN TO GREAT BASIN AVE)

1.3 ACRES



FM 685
(E PFLUGERVILLE PKWY TO SH 130)

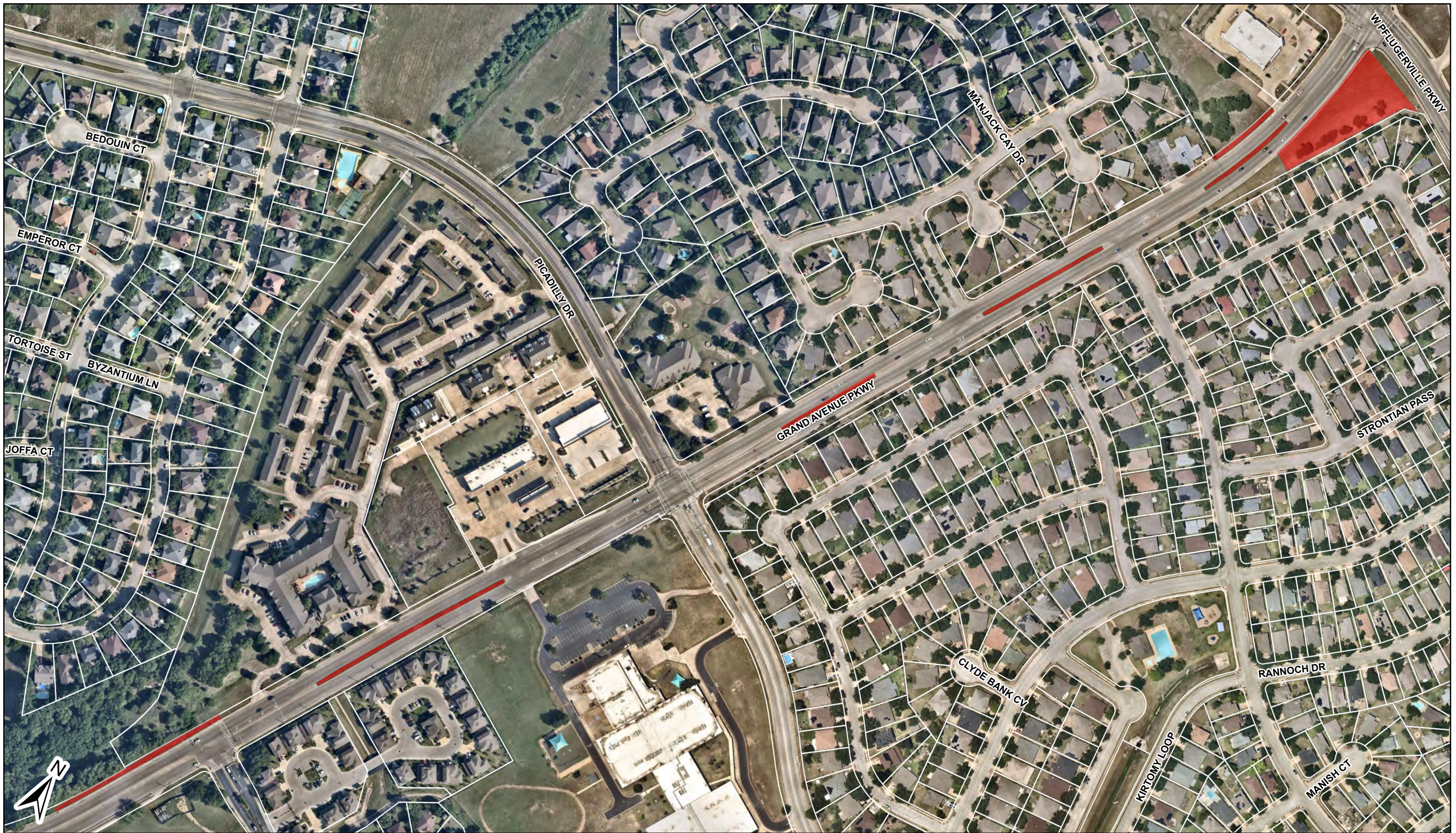
2.1 ACRES



ROW12

FM 685
(E PFENNIG LN TO APPLEWOOD DR)

1.0 ACRES



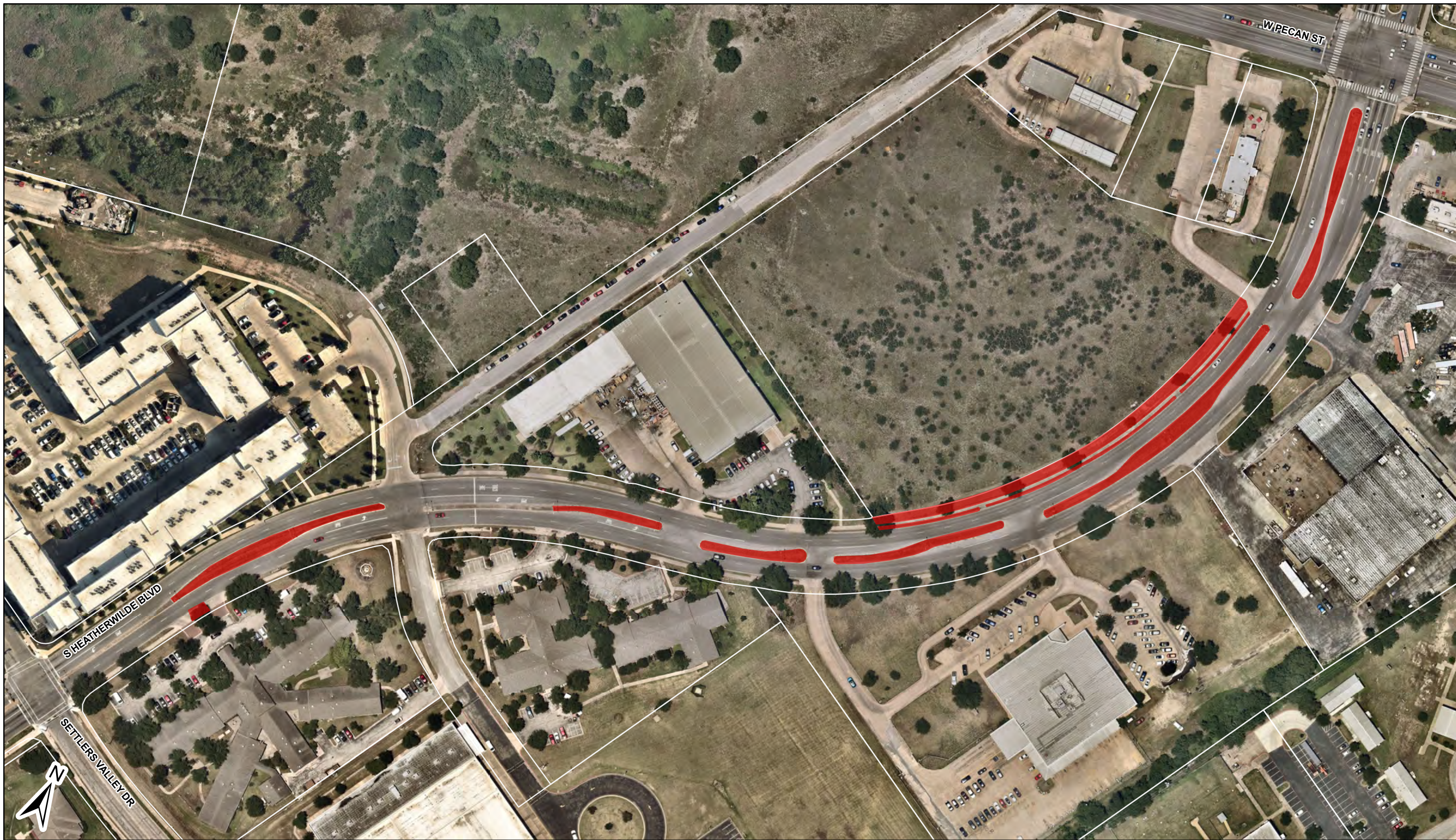
GRAND AVENUE PKWY
(BLACK LOCUS DR TO PFLUGERVILLE PKWY)

1.7 ACRES



GRAND AVENUE PKWY
(PFENNIG LN TO SH 130)

1.5 ACRES



HEATHERWILDE BLVD
(SETTLERS VALLEY DR TO W PECAN ST)

0.8 ACRES



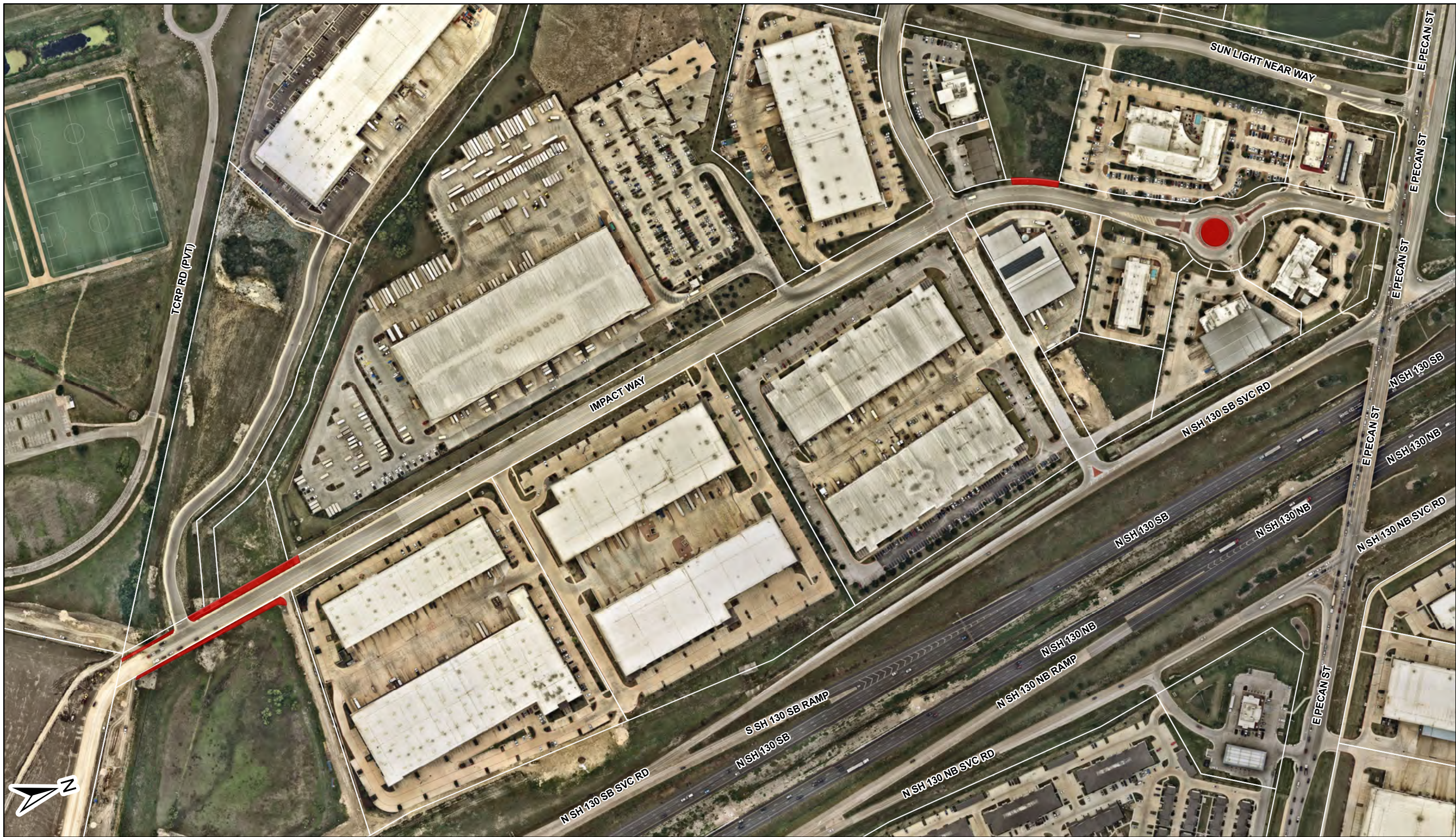
HEATHERWILDE BLVD
(W PECAN ST TO W PFENNIG LN)

1.2 ACRES



IMMANUEL RD

2.5 ACRES



ROW16

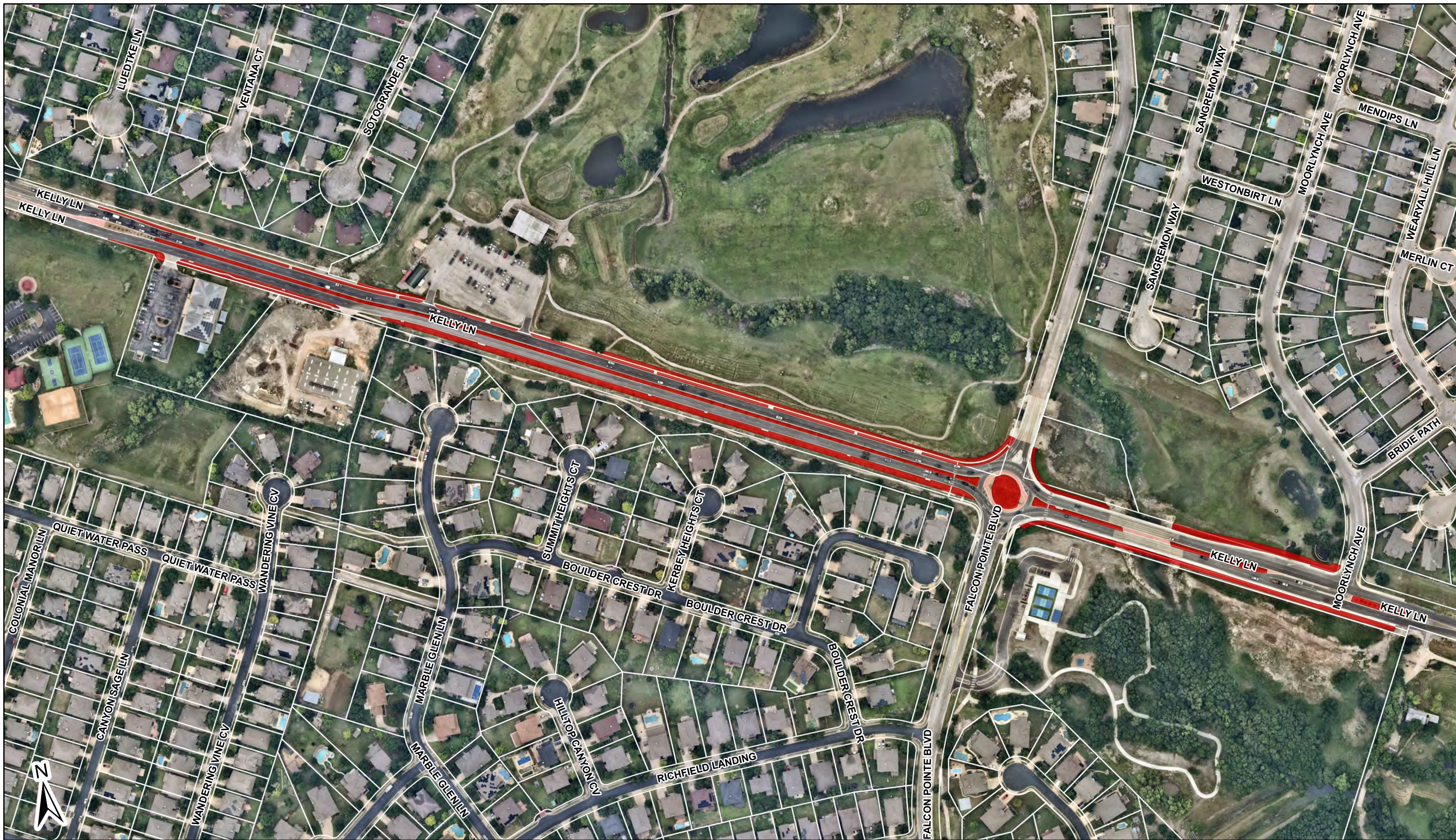
IMPACT WAY

0.5 ACRES



KELLY LN
(AT COLORADO SAND DR)

0.3 ACRES



ROW17 **KELLY LN**
(FALCON POINTE BLVD TO HIDDEN LAKE DR)

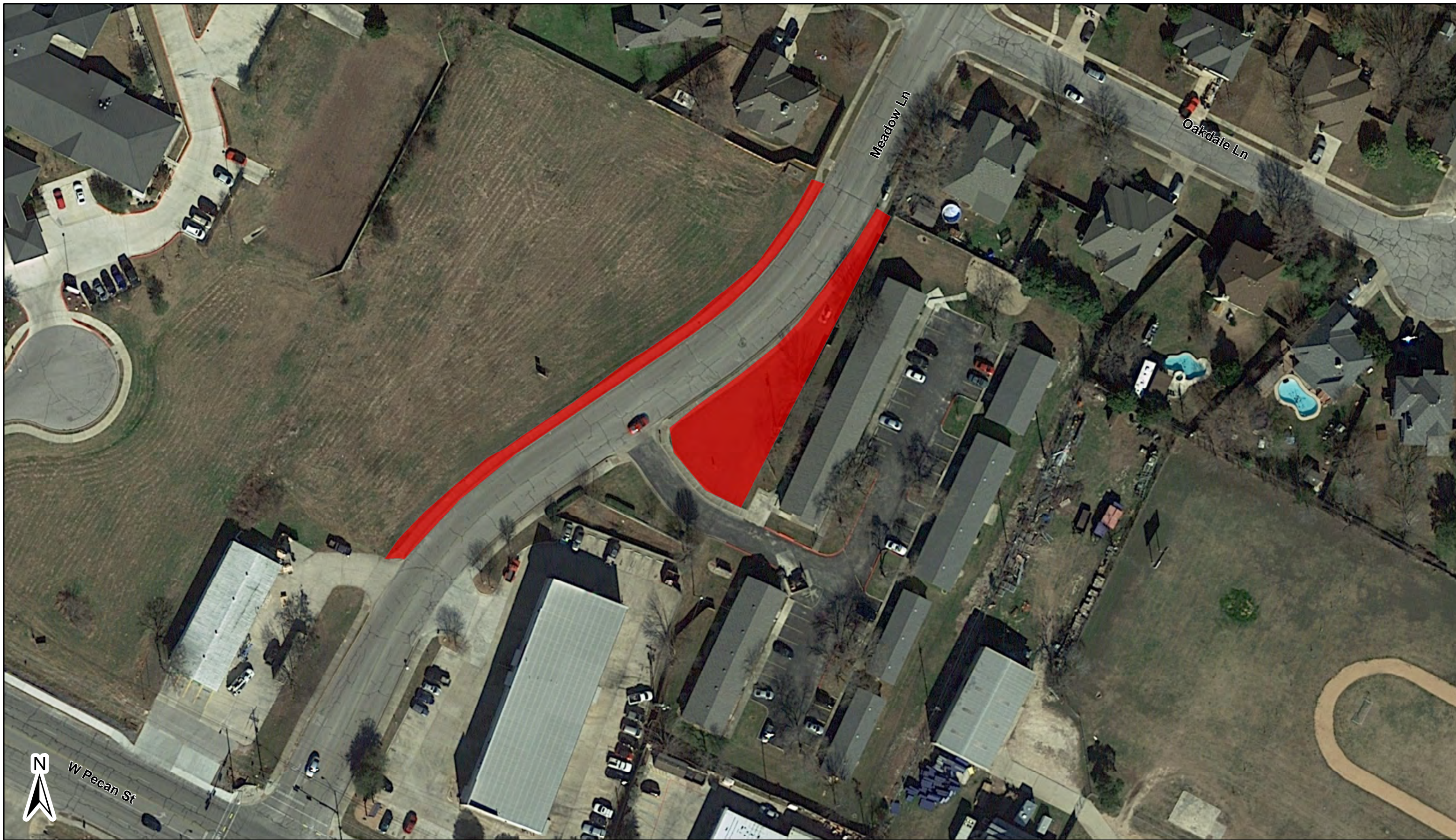
2.0 ACRES



ROW17

KELLY LN
(JAKES HILL RD TO WEISS LN)

1.2 ACRES



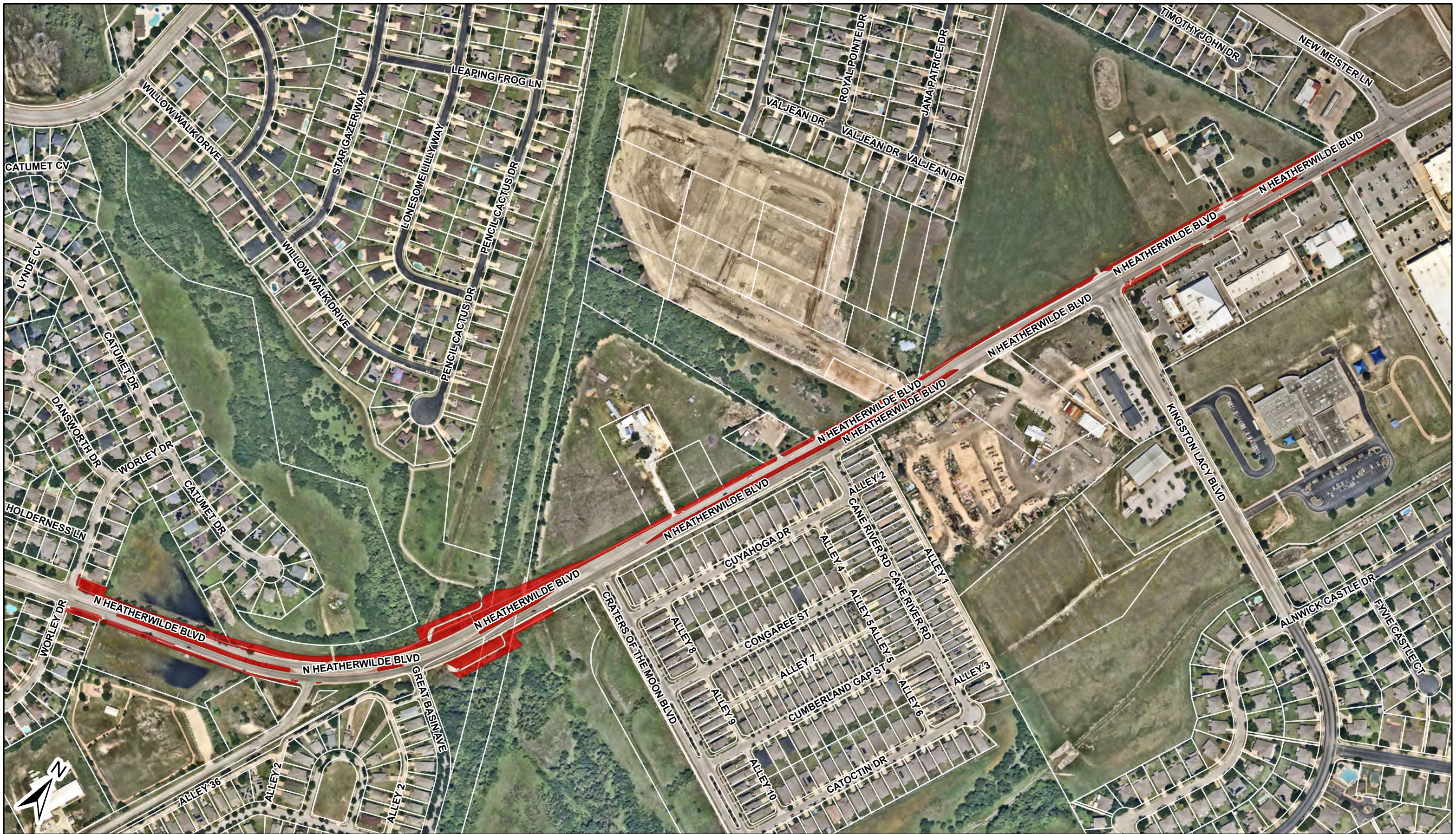
MEADOW LN

0.3 ACRES



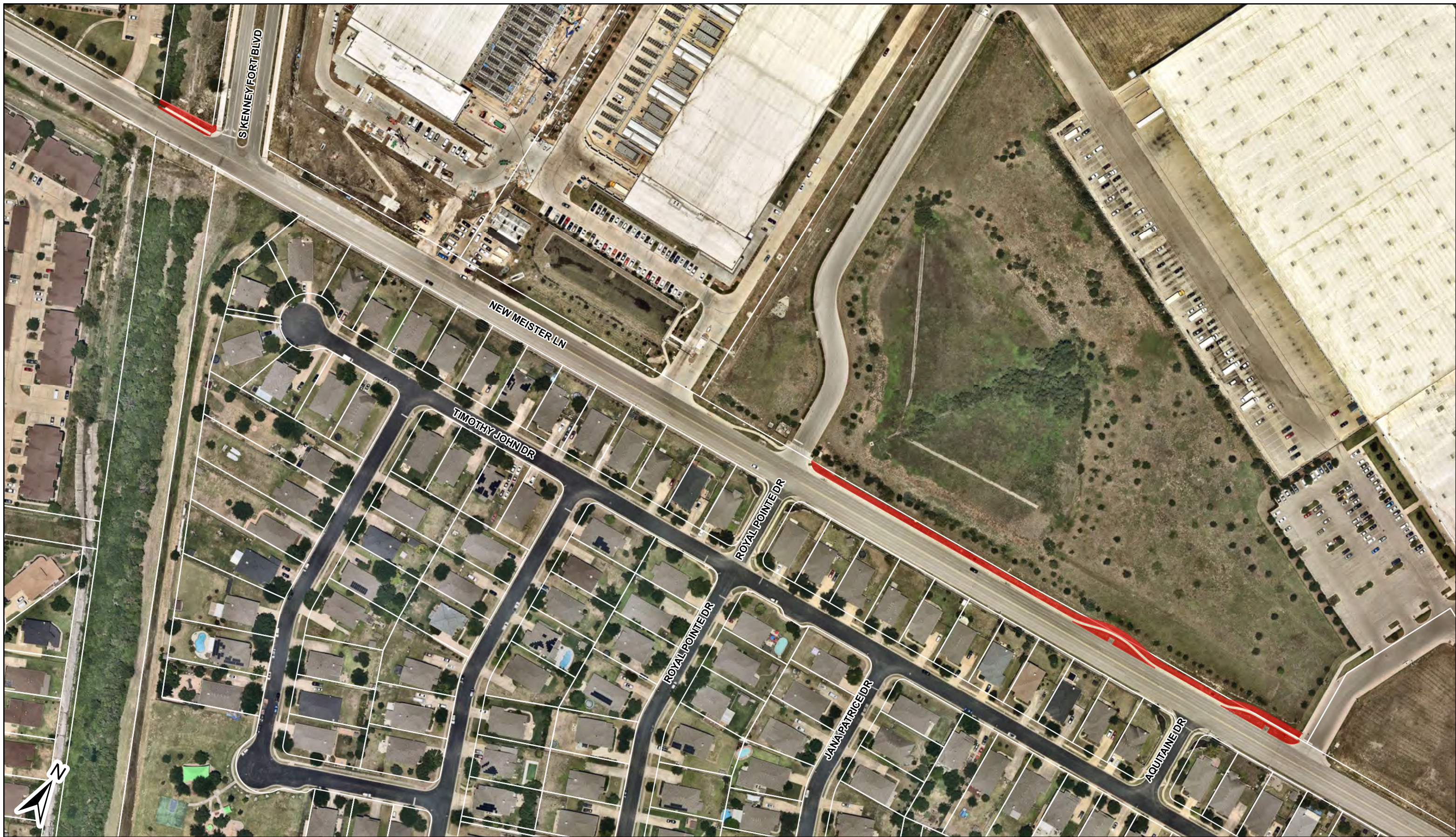
ROW14 **N HEATHERWILDE BLVD**
(NEW MEISTER LN TO CHEYENNE VALLEY DR)

2.7 ACRES



ROW14 N HEATHERWILDE BLVD
(WORLEY DR TO NEW MEISTER LN)

3.6 ACRES



NEW MEISTER LN

0.3 ACRES



ROW22 PFLUGER FARM LN

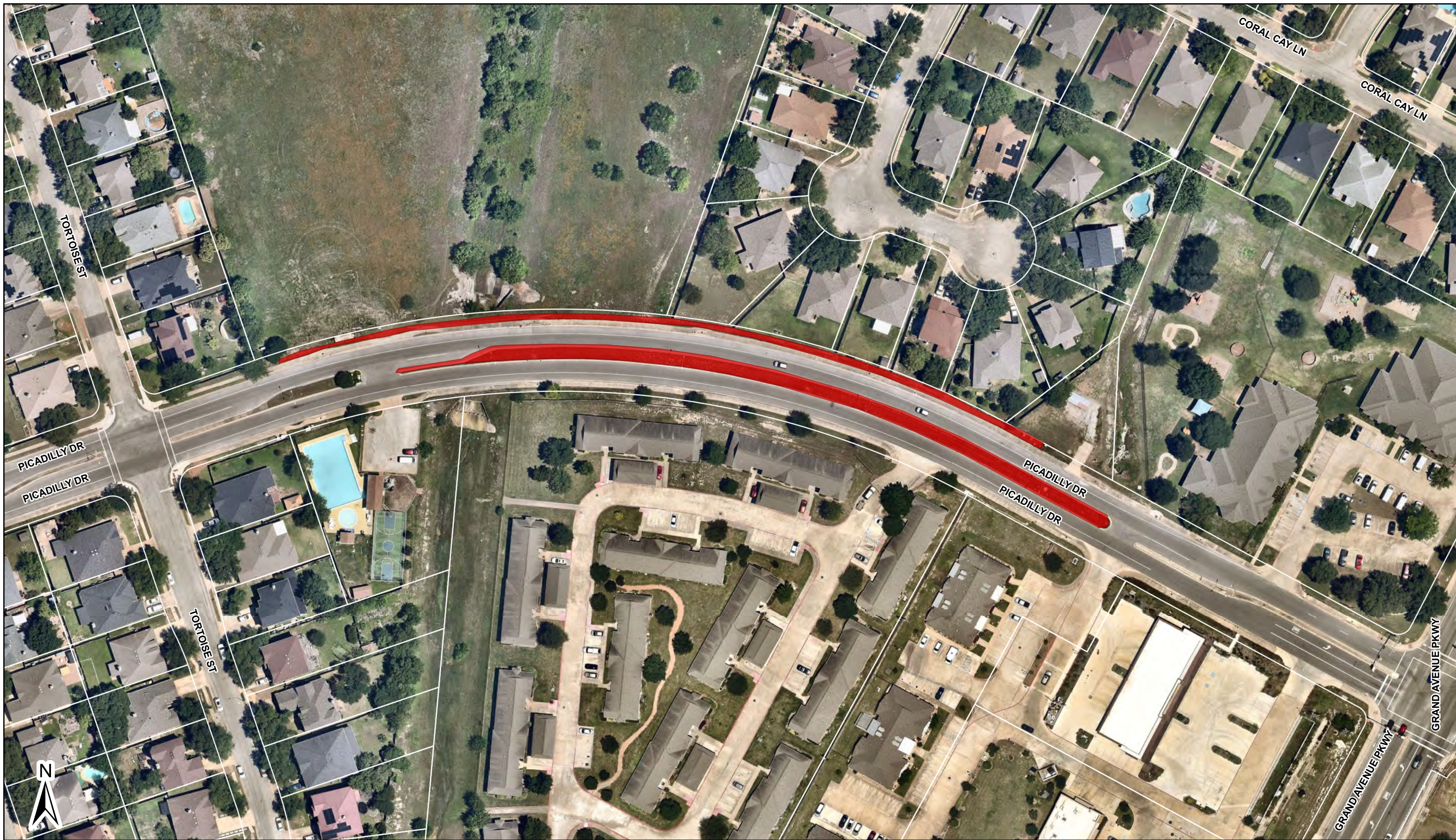
2.1 ACRES



ROW23

PFLUGERVILLE LP

1.0 ACRES



ROW24

PICADILLY DR
(TORTOISE ST TO GRAND AVENUE PKWY)

0.4 ACRES



ROW24

PICADILLY DR
(WEST OF CENTRAL COMMERCE DR)

0.4 ACRES



PICADILLY DR
(CENTRAL COMMERCE DR TO JERUSALEM DR)

0.7 ACRES



PORTCHESTER CASTLE PATH

0.2 ACRES



ROW19 **N RAILROAD AVE**
(E PFLUGERVILLE PKWY TO E PFENNIG LN)

2.0 ACRES



ROW26

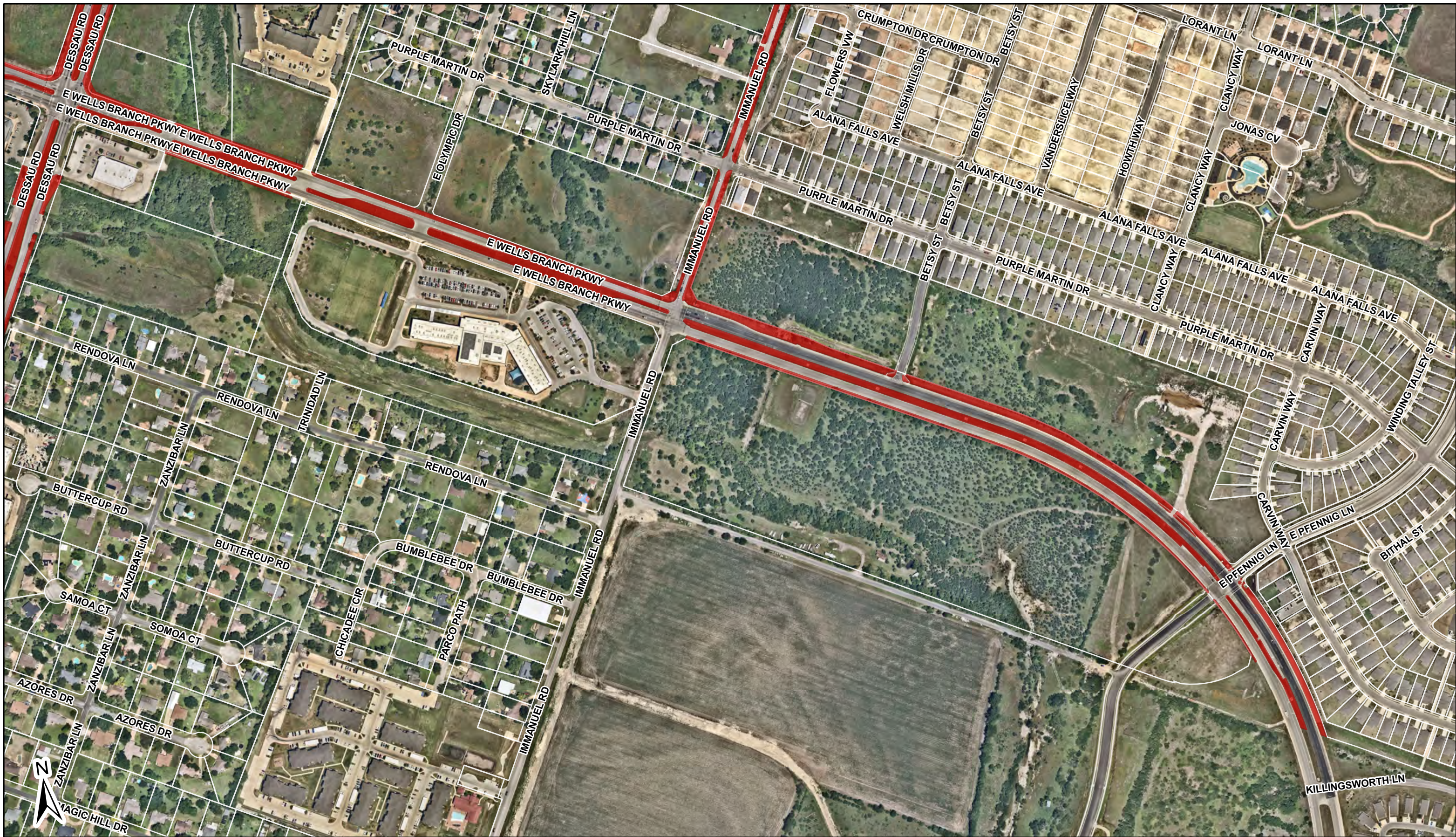
ROWE LN

0.3 ACRES



ROW14 S HEATHERWILDE BLVD
(WELLS BRANCH PKWY TO SETTLERS VALLEY DR)

1.1 ACRES



ROW27

S KENNY FORT BLVD

1.0 ACRES



ROW28

SCHULTZ LN

2.5 ACRES



ROW29 SWENSON FARMS BLVD

0.3 ACRES



ROW9

W PECAN ST

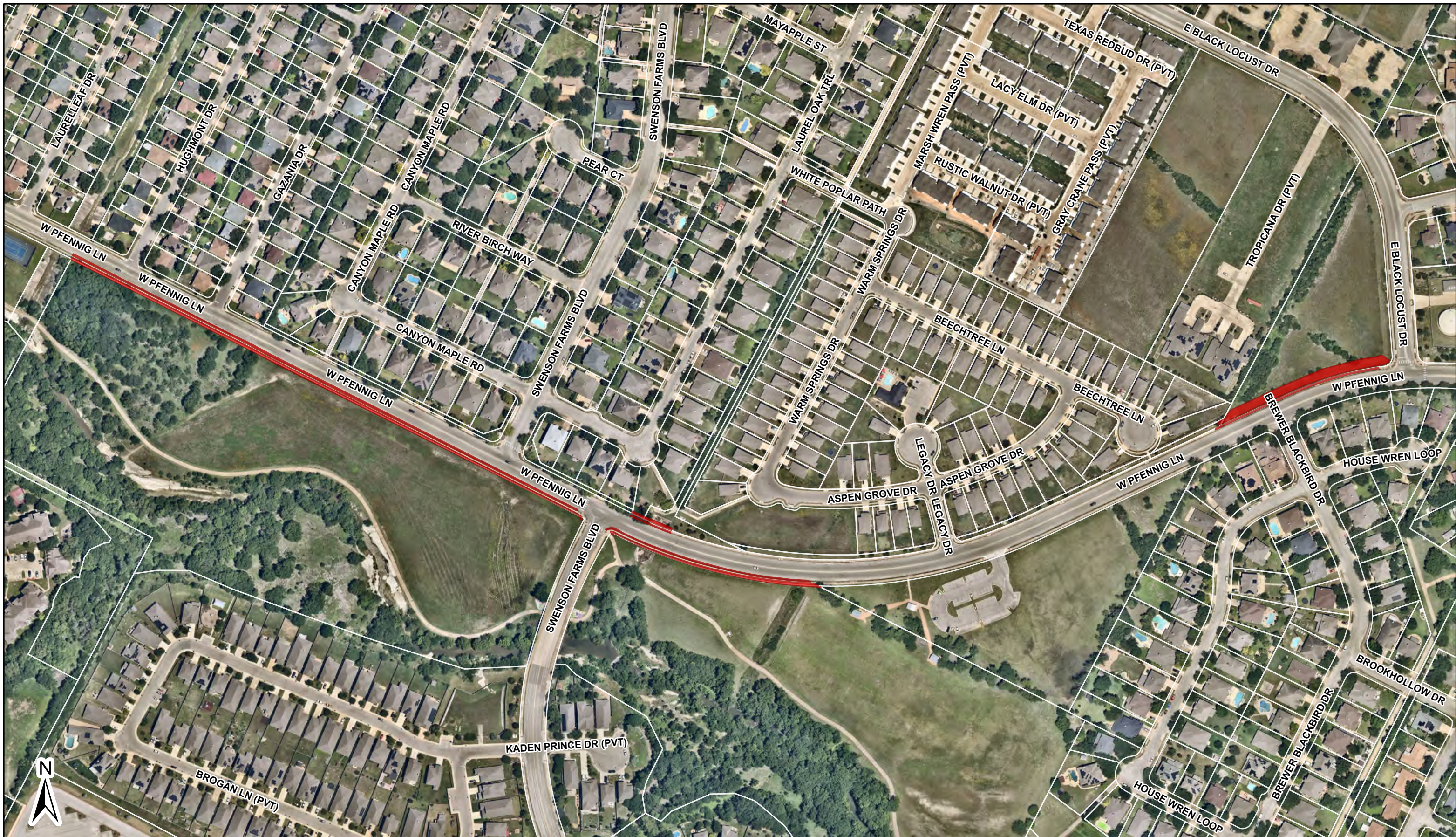
0.9 ACRES



ROW11

W PFENNIG LN
(E BLACK LOCUST DR TO JULIE'S WALK)

0.7 ACRES



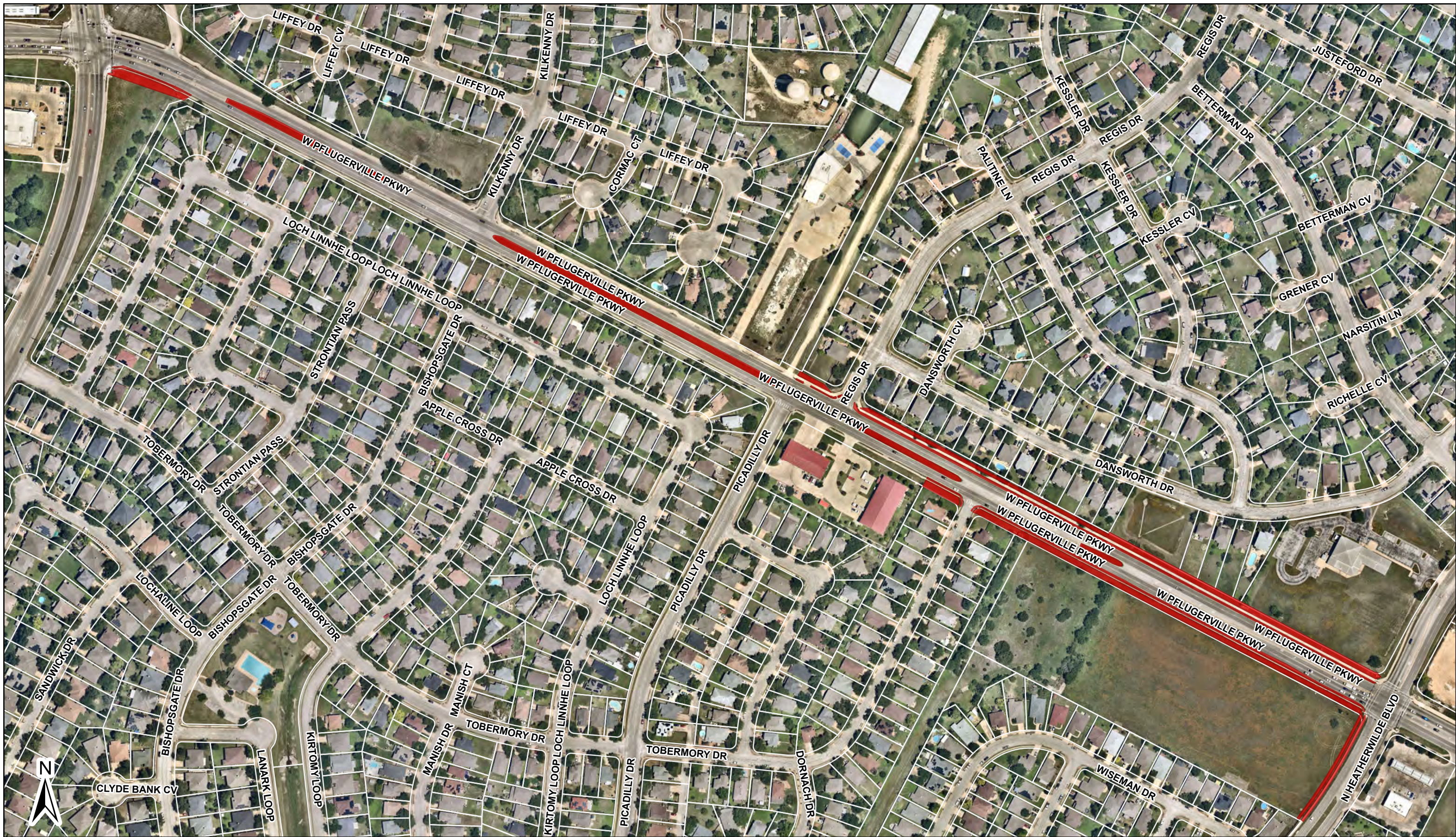
ROW11 **W PFENNIG LN**
(LAURELLEAF DR TO E BLACK LOCUST DR)

0.8 ACRES



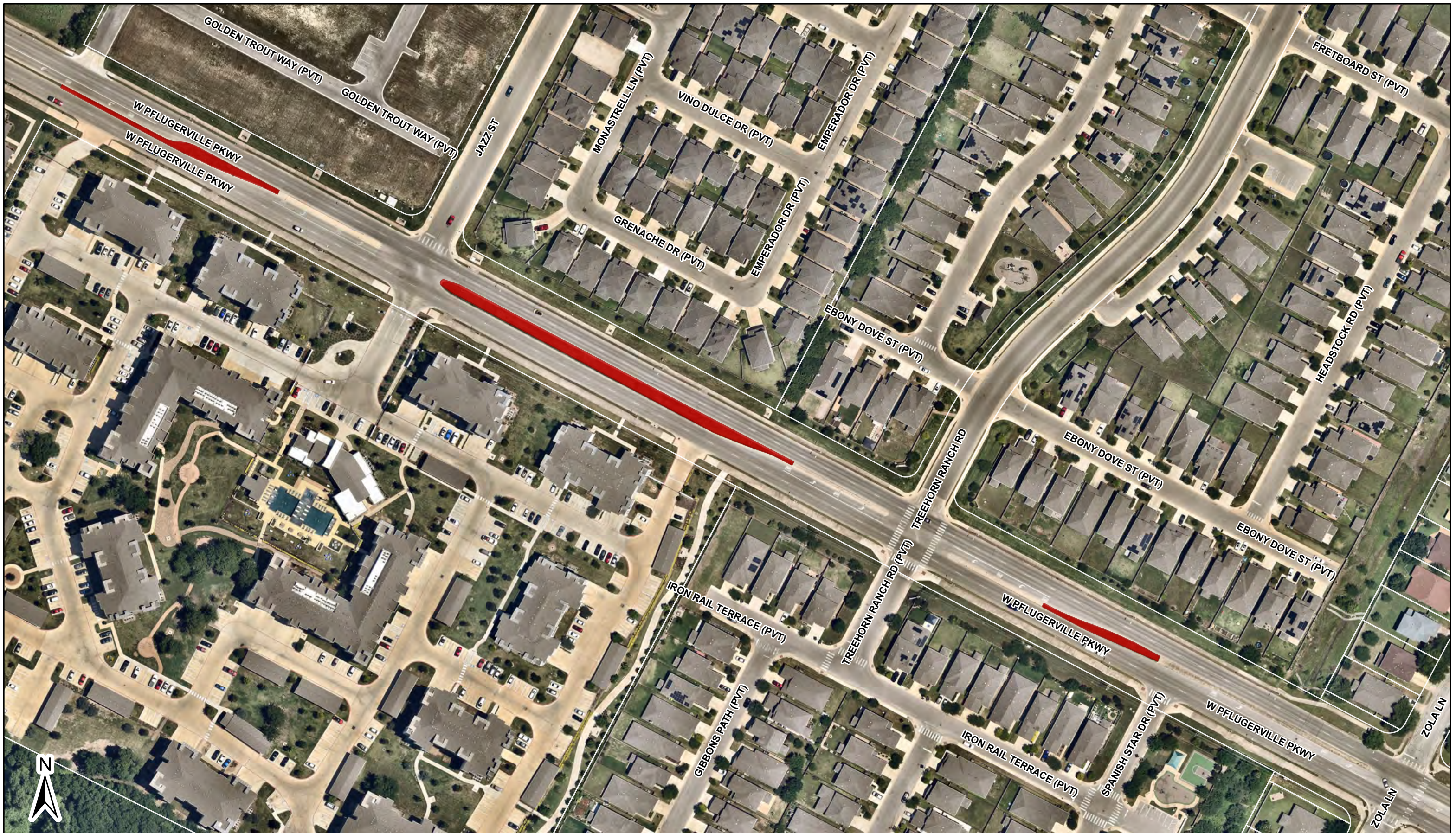
ROW10 W PFLUGERVILLE PKWY
(GRAND AVENUE PKWY TO CRANSTON DR)

1.2 ACRES



ROW10 **W PFLUGERVILLE PKWY**
(N HEATHERWILDE BLVD TO GRAND AVENUE PKWY)

2.2 ACRES



**ROW10 W PFLUGERVILLE PKWY
(ZOLA LN TO CITY LIMITS)**

0.3 ACRES



ROW30

WEISS LN
(NORTH OF LAKE PFLUGERVILLE)

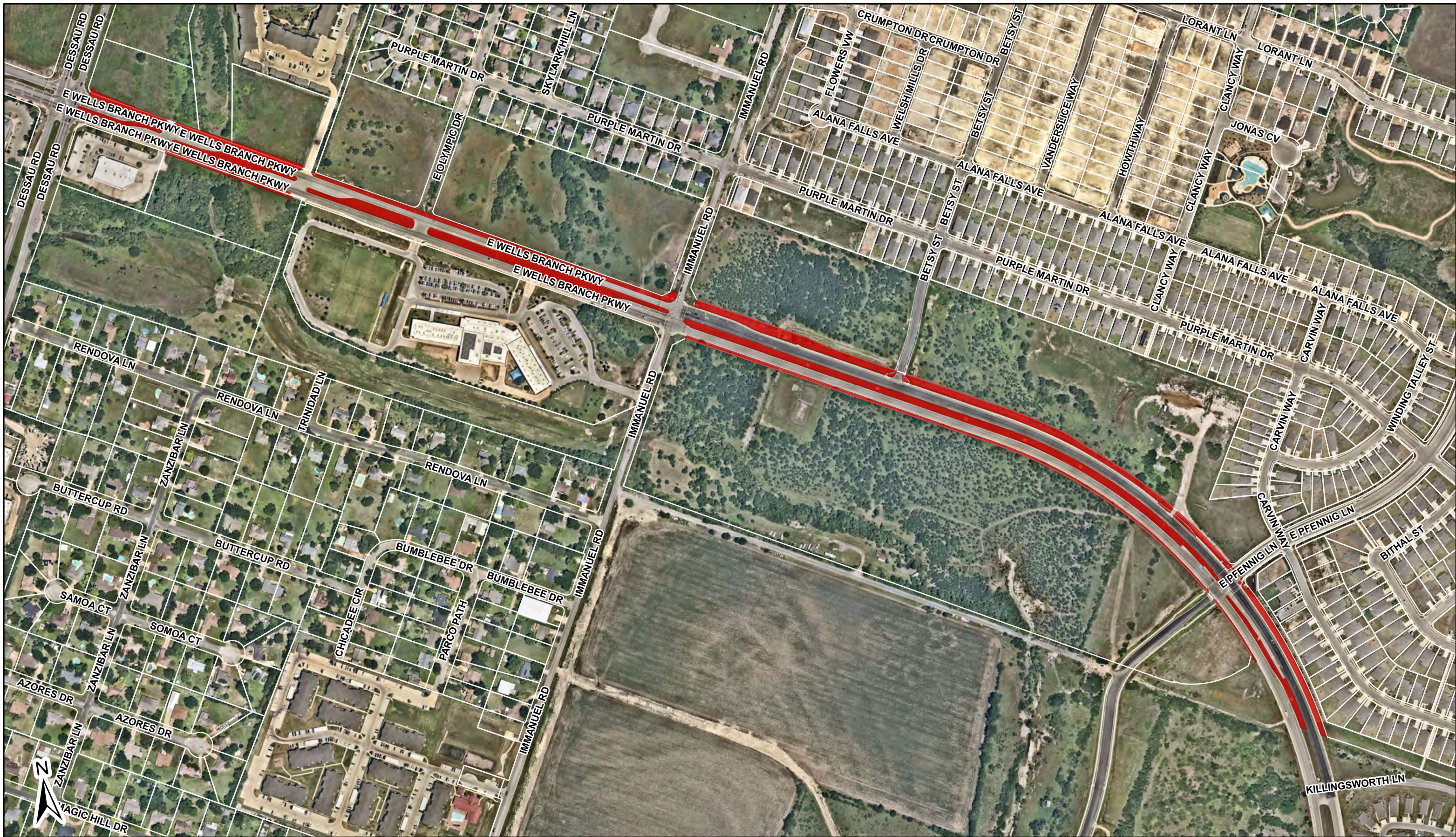
1.0 ACRES



ROW30

WEISS LN
(SOUTH OF LAKE PFLUGERVILLE)

6.0 ACRES



ROW31 **WELLS BRANCH PKWY**
(EAST OF DESSAU RD)

6.2 ACRES



ROW31 **WELLS BRANCH PKWY**
(WEST OF DESSAU RD)

3.7 ACRES



WILKE RIDGE LN

2.4 ACRES



YELLOW SAGE
(INCLUDES GREEN MEADOWS LN)

0.5 ACRES