

Pflugerville Street Reconstruction Package 2

– Council Workshop

Topics

- Initial Scoping Vs. Preliminary Study's Recommendations
- Asset Assessment Matrix
- Existing Pavement Condition
- Additional Scope Required
- Next Steps



Initial Scoping Vs. Proposed Repair Type

Street	Initial Scoping	Proposed Repair Type (Preliminary Study Report)
1- Bushmills	Mill & Overlay with Spot Base Repair	Mill & Overlay with 100% Base Repair
2- Great Basin	Mill & Overlay with Spot Base Repair	Reconstruction /Mill & Overlay with Spot Base Repair
3- Windermere	Mill & Overlay with Spot Base Repair	Mill & Overlay with Spot Base Repair
4- Edgemere	Mill & Overlay with Spot Base Repair	Mill & Overlay with Spot Base Repair
5- W Pflugerville Lp	Reconstruction	Reconstruction
6- Picadilly	Mill & Overlay with Spot Base Repair	Reconstruction
7- Yellow Sage	Reconstruction	Mill & Overlay with Spot Base Repair



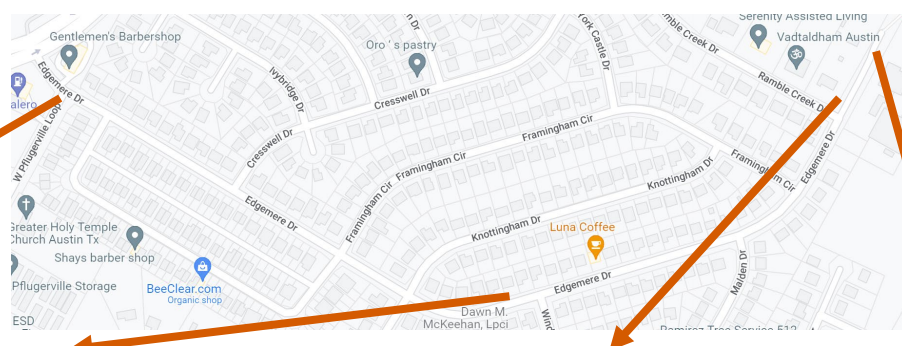
Asset Assessment Matrix

Street	Functional Classification	Pavement Condition Index (PCI) 2019	LAN's Estimated Pavement Condition Index (PCI) 2022
Bushmills Rd	Local	38	35-45
Great Basin Ave	Collector	70	35-45
Windermere	Collector	65	50-55
Edgemere	Collector	64	45-55
W. Pflugerville Lp	Collector	36	30-40
Picadilly Dr	Collector	62	35-45
Yellow Sage	Collector	70	50-60

Overall Condition Index (OCI) = 80% of Pavement Condition Index (PCI) + 20% of Normalized International Roughness Index (IRI)



Existing Pavement Condition (Edgemere) LAN's Estimated PCI: 45-55



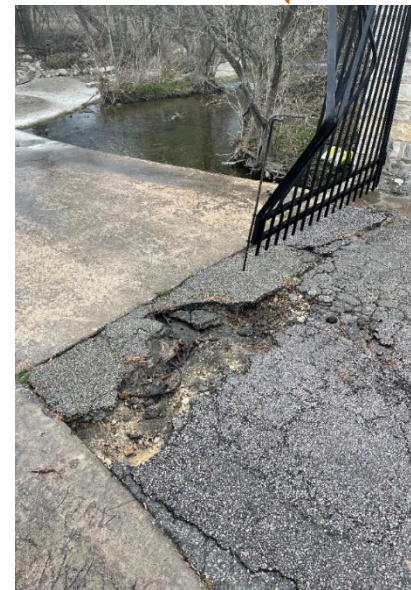
Alligator Cracks, Transverse Cracks, Loss of Bond between Asphalt Layers



Longitudinal and Transverse Cracks

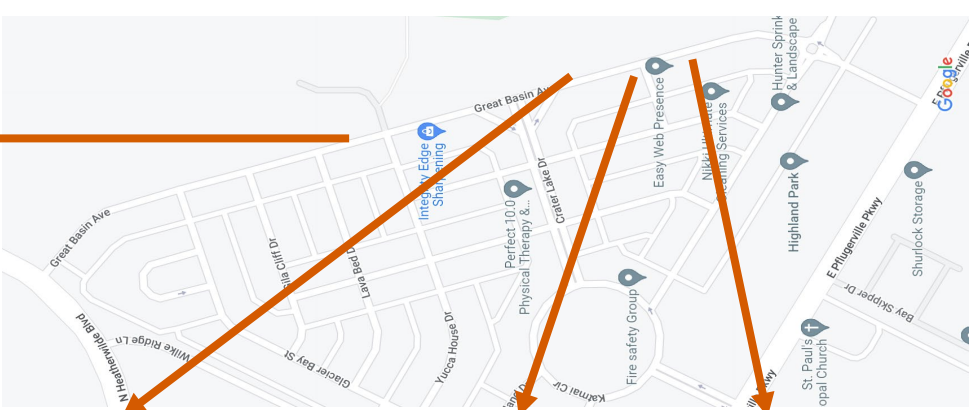


Alligator Cracks



Alligator Cracks, Pothole, Exposed Base

Existing Pavement/Sidewalk Condition (Great Basin), LAN's Estimated PCI: 35-45



Vertical Movements on Sidewalk



Vertical Movements on Sidewalk



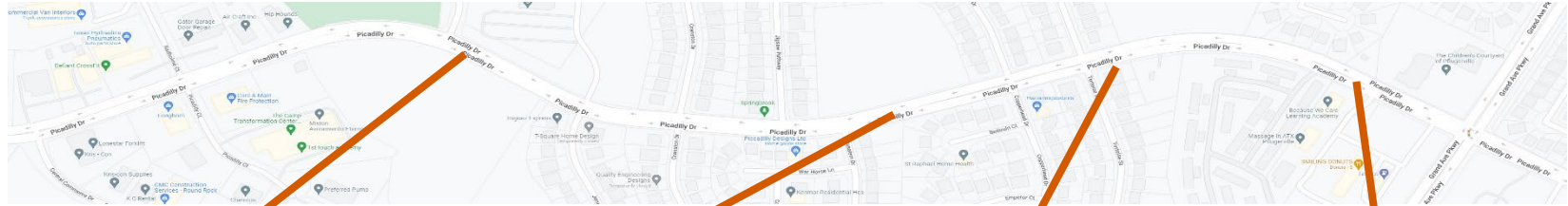
Wide Longitudinal Cracks, Differential Vertical Movements



Wide Longitudinal Cracks, Differential Vertical Movements on Pavement and Curb & Gutter, Exposed Base



Existing Pavement Condition (Picadilly) LAN's Estimated PCI: 35-45



Alligator Cracks, Transverse Cracks, Longitudinal Cracks, Block Cracks, Potholes, Patches, Loss of Bond between Asphalt Layers



Additional Scope Required

- 1- Modify the streets proposed for reconstruction to those recommended in the Preliminary Study as follows: W. Pflugerville Loop; Picadilly Drive; and Great Basin Avenue Segments 2 and 4.
- 2- Perform additional survey on Great Basin Ave to prepare survey drawings for design.
- 3- Perform additional geotechnical analysis on Great Basin Ave, Picadilly Dr, Windermere and Edgemere.
- 4- Add curb ramps and sidewalks proposed for removal and replacement per Preliminary Study.
- 5- Add the limits of Bushmills Road from Bushmills Court to Village Glen Road and the Bushmills Court cul-de-sac as alternates for mill and overlay with base repairs.
- 6- Prepare the additional plans, specifications and estimates for the modified limits described in Item 1 through 5 above.
- 7- Prepare separate bid and construction packages for: a) the mill and overlay with base repair streets, including the limits in #5 as alternates; and b) streets proposed for reconstruction.

Next Steps

- Perform additional geotechnical investigation and survey
- Evaluate results, present rehabilitation/reconstruction methods, and make recommendation for project bidding.



Questions



Hossein Roshani, PhD, PE

HRoshani@LAN-inc.com

512-338-2737

