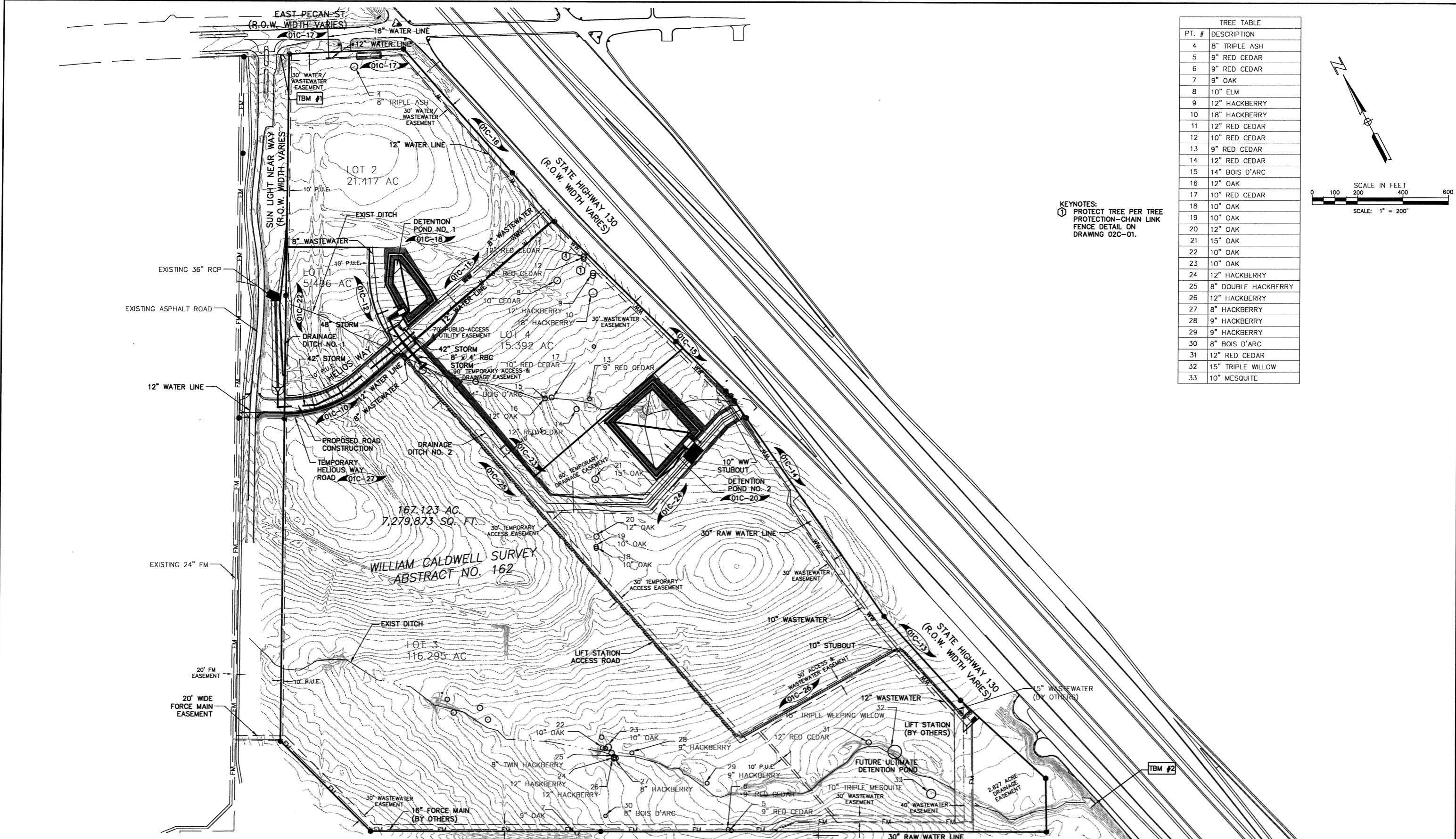
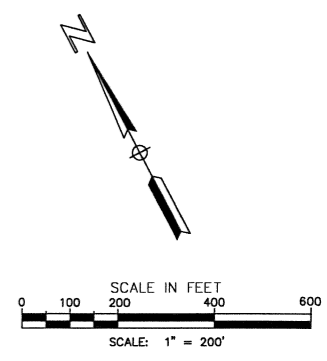


FILENAME: Z:\FTP_Stores\Tommy\PHASE 1 Construction Drawings\01C-01 Site Plan and Tree Survey.dwg, LAST SAVED ON: Jan 12 2012 8:15pm, PLOTTED BY: CHOLMES, ON: Jan 12 2012 8:15pm, CFB.



KEYNOTES:
 ① PROTECT TREE PER TREE PROTECTION-CHAIN LINK FENCE DETAIL ON DRAWING 02C-01.

TREE TABLE	
PT. #	DESCRIPTION
4	8" TRIPLE ASH
5	9" RED CEDAR
6	9" RED CEDAR
7	9" OAK
8	10" ELM
9	12" HACKBERRY
10	18" HACKBERRY
11	12" RED CEDAR
12	10" RED CEDAR
13	9" RED CEDAR
14	12" RED CEDAR
15	14" BOIS D'ARC
16	12" OAK
17	10" RED CEDAR
18	10" OAK
19	10" OAK
20	12" OAK
21	15" OAK
22	10" OAK
23	10" OAK
24	12" HACKBERRY
25	8" DOUBLE HACKBERRY
26	12" HACKBERRY
27	8" HACKBERRY
28	9" HACKBERRY
29	9" HACKBERRY
30	8" BOIS D'ARC
31	12" RED CEDAR
32	15" TRIPLE WILLOW
33	10" MESQUITE



REV. NO.	DATE	DESCRIPTION

PROJECT MANAGER:	DCS
DESIGNED BY:	WCD
CHECKED BY:	WCD
DRAWN BY:	CMH
DCS PROJECT NO:	20101233



DCS ENGINEERING, LLC
 6000 SHEPHERD MOUNTAIN COVE #2003
 AUSTIN, TX 78730
 TEL: (512) 614-6171
 FAX: (512) 284-8021
 T.B.P.E. FIRM NO. F-13162

PFLUGERVILLE COMMUNITY DEVELOPMENT CORPORATION
 RENEWABLE ENERGY PARK - PHASE I



1/5/12
Darren C. Strozewski

WATER, WASTEWATER, PAVING AND DRAINAGE
 PROPOSED-OVERALL SITE PLAN AND TREE SURVEY

DATE:
 JANUARY 2012
 SCALE:
 AS NOTED
 DRAWING:
 01C-01