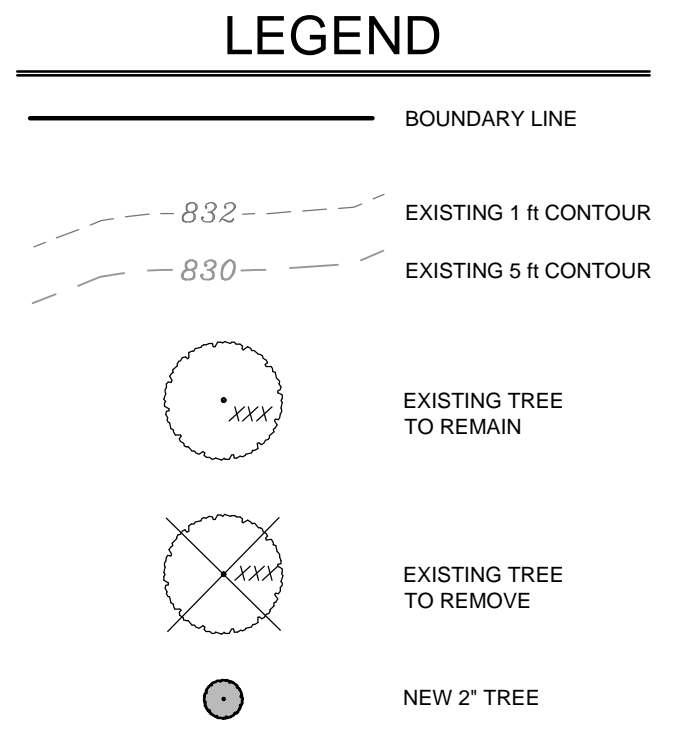
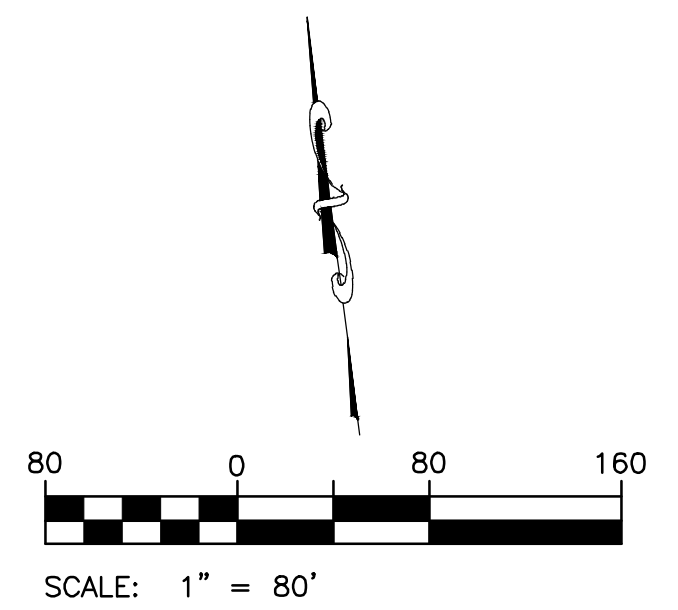
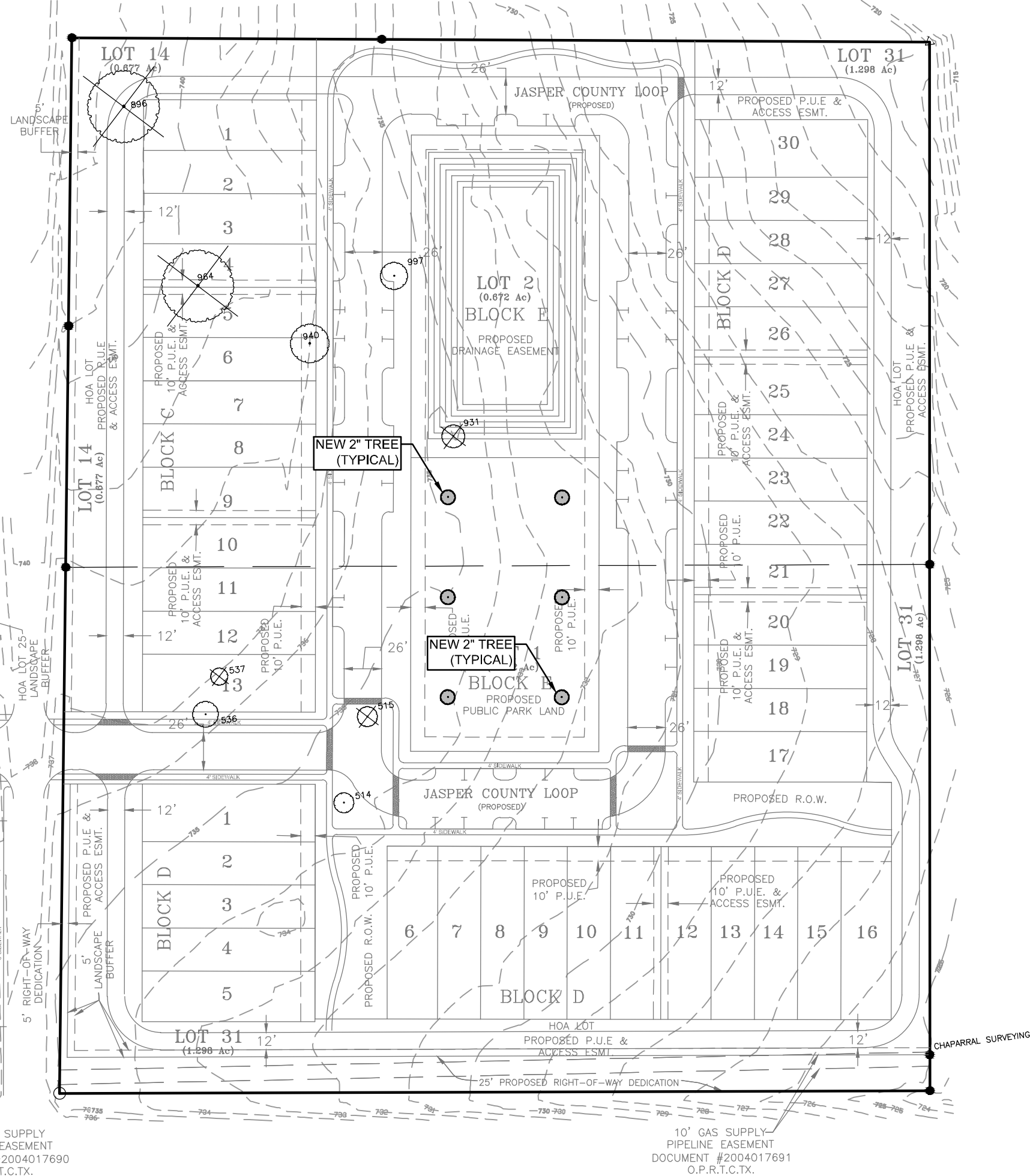
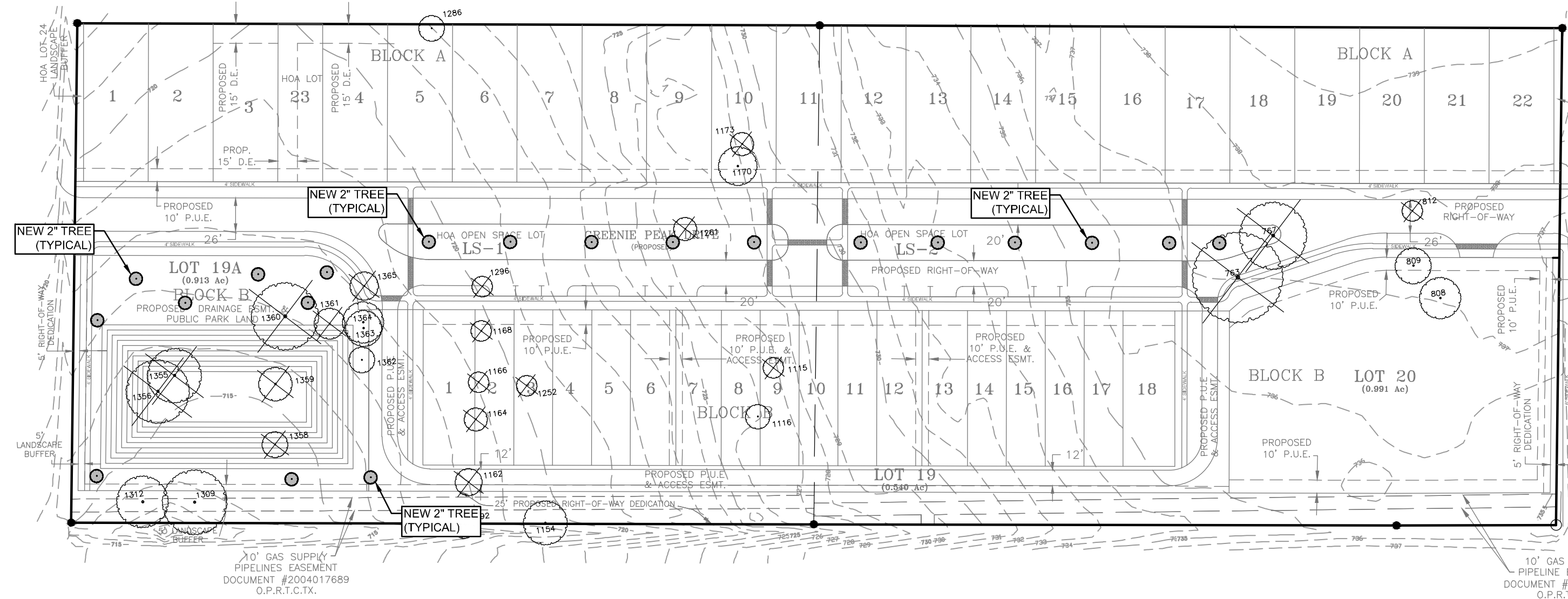


TREE SURVEY								
PROTECTION STATUS AND CLASS	PROPOSED REMOVAL (X) OR CREDIT (C)	TREE #	SPECIES	SIZE (inches)	MITIGATION		CREDIT	
					RATIO	INCHES REQUIRED	RATIO	INCHES CREDIT
NP - Class 1	X	514	LIVE OAK	7"	N/A	0	1:1	0
NP - Class 1	X	515	LIVE OAK	7"	N/A	0	1:1	0
P - Class 2	C	536	LIVE OAK	9"	1:1	0	1:1	9
NP - Class 1	X	537	PINE	6"	N/A	0	1:1	0
P - Class 6	C	763	ARIZONA ASH	35"	3:1	35	1.5:1	0
P - Class 6	C	767	ARIZONA ASH	26"	3:1	26	1.5:1	0
P - Class 2	C	808	LIVE OAK	16"	1:1	0	1:1	16
P - Class 2	C	809	PECAN	14"	1:1	0	1:1	14
P - Class 2	X	812	PECAN	8"	1:1	8	1:1	0
P - Class 6	C	896	ASH	25"	3:1	25	1.5:1	0
P - Class 2	X	931	FRUIT	8"	1:1	8	1:1	0
NP - Class 1	C	938	CHINESE TALLOW	MULTI-STEM: 6", 4"	N/A	0	1:1	10
P - Class 2	C	940	PECAN	13.5"	1:1	0	1:1	14
P - Class 6	C	964	ASH	25"	3:1	25	1.5:1	0
NP - Class 1	X	997	PECAN	MULTI-STEM: 6", 4", 3"	N/A	0	1:1	0
P - Class 2	C	1115	ASH	8"	1:1	0	1:1	8
P - Class 2	C	1116	ASH	9.5"	1:1	0	1:1	10
P - Class 2	C	1154	HACKBERRY	17"	1:1	0	1:1	17
P - Class 2	X	1162	ASH	10.5"	1:1	10.5	1:1	0
P - Class 2	X	1164	ASH	9"	1:1	9	1:1	0
P - Class 2	X	1166	ASH	8"	1:1	8	1:1	0
P - Class 2	X	1168	ASH	8"	1:1	8	1:1	0
P - Class 2	C	1170	HACKBERRY	MULTI-STEM: 5", 7", 9"	1:1	0	1:1	21
P - Class 2	X	1173	FRUIT	9"	1:1	9	1:1	0
P - Class 2	X	1252	ASH	8"	1:1	8	1:1	0
P - Class 2	X	1261	ASH	9"	1:1	9	1:1	0
P - Class 2	C	1286	PINE	10"	1:1	0	1:1	10
P - Class 2	X	1296	ASH	8"	1:1	8	1:1	0
P - Class 6	C	1309	PECAN	25"	3:1	0	1.5:1	38
P - Class 5	C	1312	PECAN	20"	3:1	0	1.5:1	30
P - Class 5	X	1355	WILLOW	21"	3:1	63	1.5:1	0
P - Class 2	X	1356	WILLOW	MULTI-STEM: 16", 13"	1:1	31	1:1	0
P - Class 2	X	1358	ASH	10"	1:1	10	1:1	0
P - Class 2	X	1359	ASH	13"	1:1	13	1:1	0
P - Class 2	C	1360	WILLOW	MULTI-STEM: 13", 13", 13"	1:1	0	1:1	39
P - Class 2	X	1361	ASH	12"	1:1	12	1:1	0
P - Class 2	C	1362	ASH	10"	1:1	0	1:1	10
P - Class 2	C	1363	HACKBERRY	14"	1:1	0	1:1	14
P - Class 2	C	1364	HACKBERRY	16"	1:1	0	1:1	16
P - Class 2	X	1365	ASH	11"	1:1	11	1:1	0
P - Class 2	C	1362	HACKBERRY	8"	1:1	0	1:1	8
TOTAL INCHES MITIGATION AND CREDIT:						337		281
MITIGATION - CREDIT = DIAMETER INCHES PROPOSED FOR MITIGATION OR APPLIED TOWARDS LANDSCAPING REQUIREMENTS:					56 INCHES OF MITIGATION REQUIRED*			
<b>LEGEND</b>								
NOT PROTECTED (NP)								
PROTECTED (P)								



REVISION  
 NO. BY DATE  
 LLOOMIS PARTNERS  
 ENGINEERING • LAND SURVEYING • ENVIRONMENTAL CONSULTING  
 3101 Bee Cave Road, Suite 100 • Austin, Texas 78746  
 (TEL) 512.327.1180 • (FAX) 512.327.4062 • www.loomis-partners.com  
 (APE Firm Registration No. #2288)

THIS DOCUMENT IS RELEASED FOR THE PURPOSE OF INTERIM REVIEW, MARK-UP, AND/OR DRAFTING UNDER THE AUTHORITY OF THOMAS G. LOOMIS, P.E., 65969 ON DATE APRIL 2011. IT IS NOT TO BE USED FOR CONSTRUCTION, BIDDING, OR PERMIT PURPOSES.

HUNTINGTON PARK  
 PRELIMINARY PLAN  
 PFLUGERVILLE, TEXAS

DESIGNED BY: J.R.  
 DRAWN BY: D.C.  
 CHECKED BY: J.R.  
 APPROVED BY: J.R.  
 DATE: November 2010

TREE SURVEY