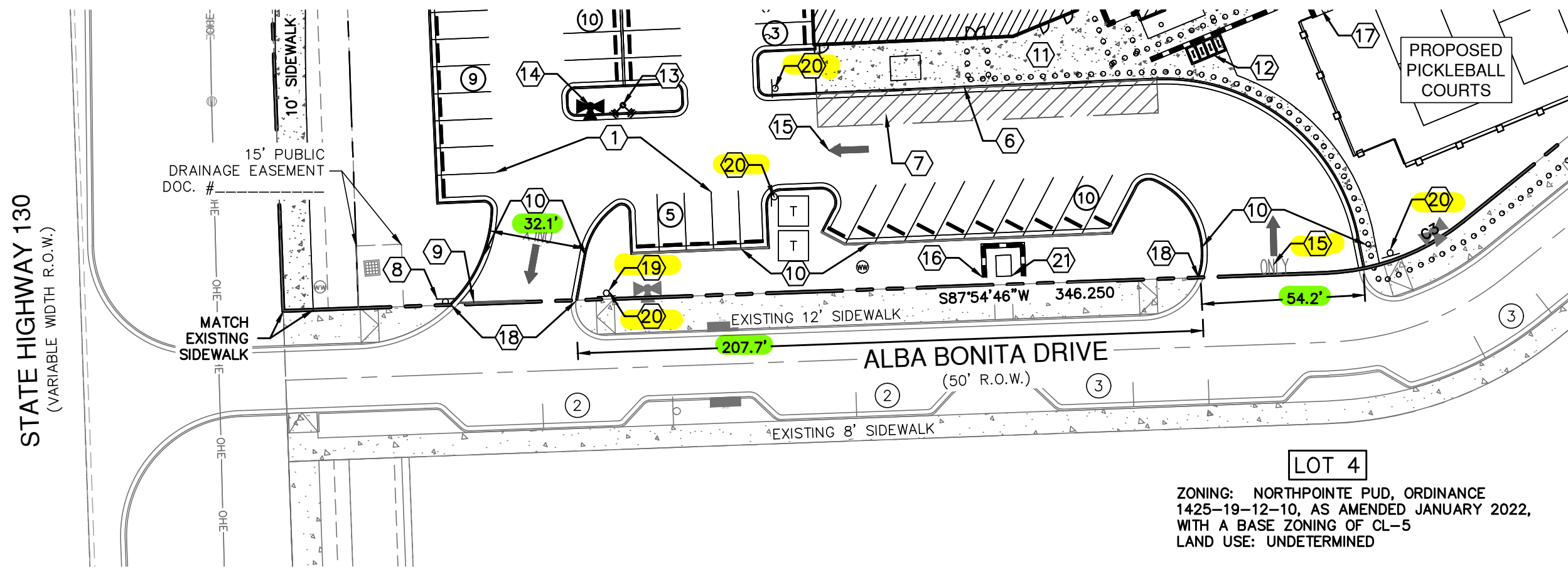
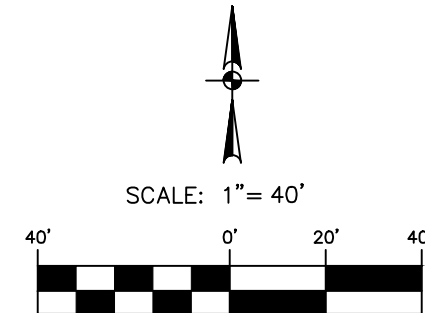


Date: Mar 28, 2023, 1:53pm User ID: cpatal  
 File: \\PAPE-DAWSON.COM\Shares\Users\CPatal\Computer\Desktop\230328 - Driveway Variance Exhibit.dwg

### KEYED NOTES

- |   |   |
|---|---|
| ① PROPOSED 4" SOLID STRIPE  | ⑪ CONCRETE SIDEWALK<br>(DETAIL SD-14. SEE DETAIL SHEET 29)            |
| ② SIDEWALK RAMP @ 12:1 MAX SLOPE<br>(SEE DETAIL SHEET 29)               | ⑫ BICYCLE RACK (SEE DETAIL SHEET 30)                                  |
| ③ ACCESSIBLE PARKING SIGN AND<br>WHEEL STOP (SEE DETAIL SHEET 29 & 30)  | ⑬ PROPOSED REMOTE FIRE DEPARTMENT CONNECTION<br>(SEE DETAIL SHEET 32) |
| ④ MONUMENT SIGN (SEE ARCHITECT PLANS)                                   | ⑭ PROPOSED FIRE HYDRANT (SEE DETAIL SHEET 31)                         |
| ⑤ SIDEWALK RAMP WITH HANDRAIL @ 12:1 MAX<br>SLOPE (SEE DETAIL SHEET 30) | ⑮ PROPOSED TRAFFIC ARROW  |
| ⑥ FLUSH CURB  | ⑯ PROPOSED WALL   |
| ⑦ STRIPED LOADING ZONE  | ⑰ PROPOSED STEPS  |
| ⑧ STOP SIGN (SEE DETAIL SHEET 29)                                       | ⑱ MATCH EXISTING ELEVATION  |
| ⑨ 24" YELLOW STOP BAR   | ⑲ "DO NOT ENTER" SIGN   |
| ⑩ STANDARD 6" CURB (TYP) (SEE DETAIL SHEET 29)                          | ⑳ "WRONG WAY" SIGN  |



**LOT 4**

ZONING: NORTHPOINTE PUD, ORDINANCE  
 1425-19-12-10, AS AMENDED JANUARY 2022,  
 WITH A BASE ZONING OF CL-5  
 LAND USE: UNDETERMINED

**HAYDEN GROVE AT PFLUGERVILLE**  
 PFLUGERVILLE, TEXAS  
 DRIVEWAY VARIANCE EXHIBIT

JOB NO. 51317-01  
 DATE MARCH 2023  
 DESIGNER CP  
 CHECKED \_\_\_\_\_  
 DRAWN CP  
 SHEET 1 of 1

**PAPE-DAWSON  
 ENGINEERS**  
 AUSTIN | SAN ANTONIO | HOUSTON | FORT WORTH | DALLAS  
 10801 N. MOPAC EXPY, BLDG 3, STE 200 | AUSTIN, TX 78759 | 512.654.8711  
 TBP# FIRM REGISTRATION #470 | TBP# FIRM REGISTRATION #10028801