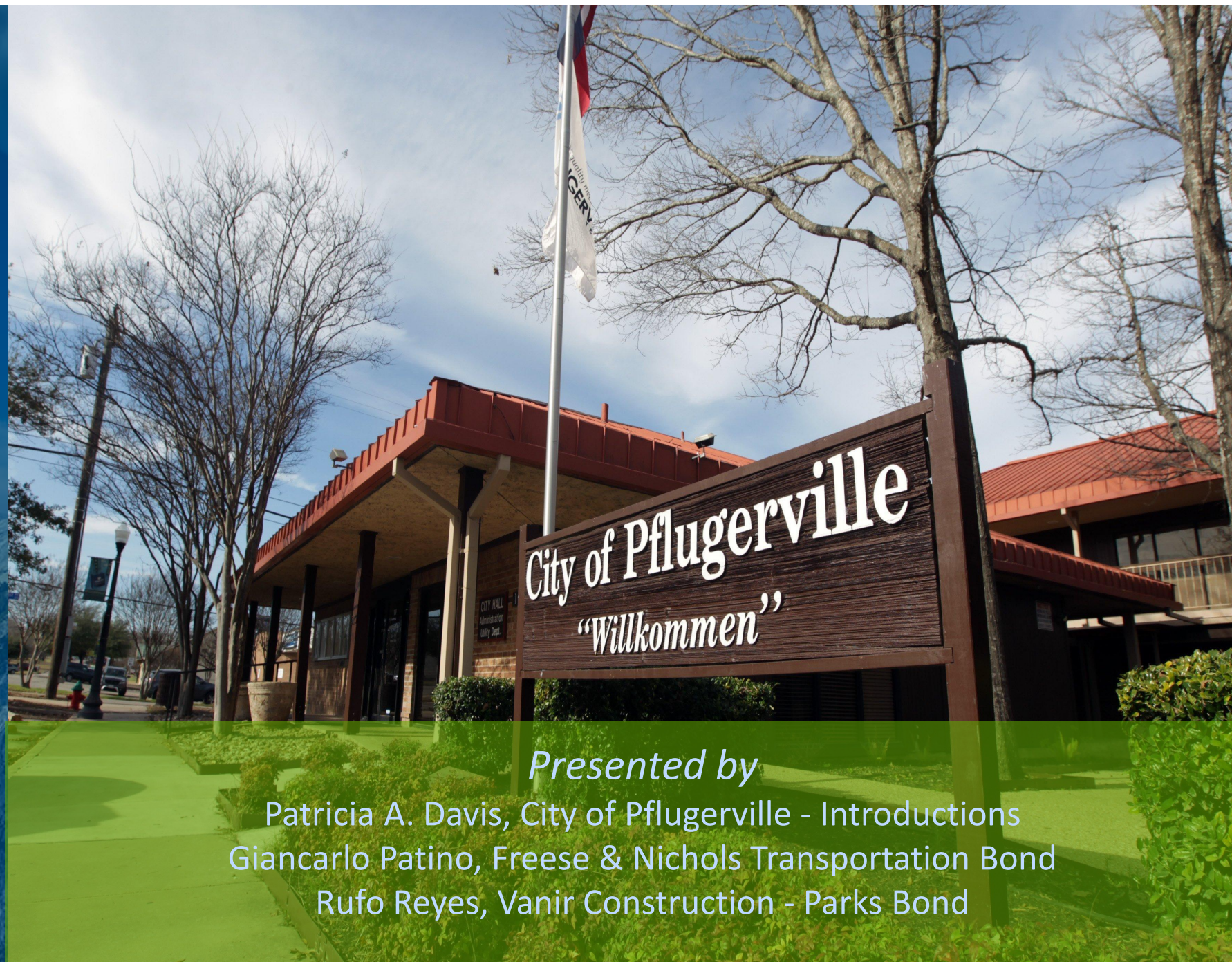




Fiscal Year 21 Quarter 4 CIP Update

2020 Capital Bond Program
Transportation & Park
Projects



Presented by

Patricia A. Davis, City of Pflugerville - Introductions
Giancarlo Patino, Freese & Nichols Transportation Bond
Rufo Reyes, Vanir Construction - Parks Bond



2020 Transportation GO Bond (Prop A) General Engineering Consultant (GEC)

Freese and Nichols, Inc.

Program Manager:
Chris Trevino, PE, CCM

Deputy Program Manager:
Giancarlo Patino, PE, CFM

Senior Advisor: Chuck Gilman, PE, PMP
PMIS: Derek Gianan, PMP, PMI-SP

Project Managers:
Andrea Bryant, PE
Will Huff, PE, CFM
David Paine, PTP, AICP
George Fowler, PE
Michael Lafferty, PE, CFM
Elliot Poduska, PE

Document Control:
Megan Flanigan, EIT

Land Acquisition Specialist:
Nikki Costanza (7 Arrows)

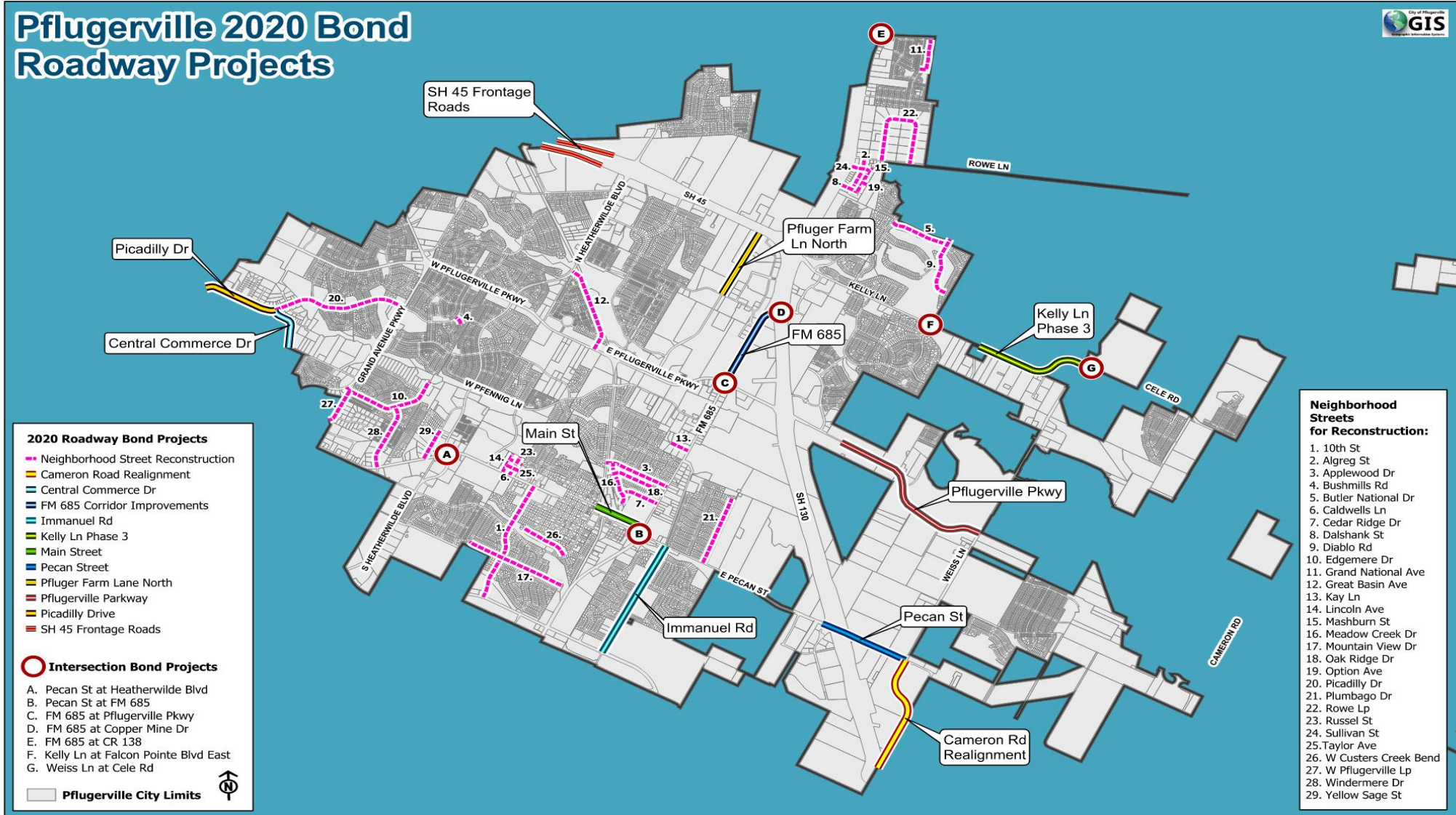
Utility Coordination:
Paul Ashby (The Rios Group)

- 18-month initial term, not-to-exceed time and material Agreement for FY21 and FY22
- Right-of-Way and Utility Coordination subconsultant support
- Program Management tasks include managing procurement of design consultants:
 1. RFQ for CIP projects (6 design consultants) – Complete, projects in design
 2. RFQ for Street Reconstruction Packages (3 design consultants) – Negotiating PSAs
 3. RFQ for FM 685 Corridor Improvements (1 design consultant) – SOQs due Dec. 9, 2021



Transportation GO Bond (Prop. A)

Pflugerville 2020 Bond Roadway Projects





Transportation Schedule

We are here

| Project | 2019 CY | | | | 2020 CY | | | | 2021 CY | | | | 2022 CY | | | | 2023 CY | | | | 2024 CY | | | | 2025 CY | | | |
|---------------------------------------|---------|----|----|----|---------|----|----|----|---------|----|----|----|--------------------------------------|----|----|----|-------------------------------|----|----|----|----------------------|----|----|----|---------|----|----|----|
| | Q1 | Q2 | Q3 | Q4 | Q1 | Q2 | Q3 | Q4 | Q1 | Q2 | Q3 | Q4 | Q1 | Q2 | Q3 | Q4 | Q1 | Q2 | Q3 | Q4 | Q1 | Q2 | Q3 | Q4 | Q1 | Q2 | Q3 | Q4 |
| Cameron Road Re-Alignment | | | | | | | | | | | | | RFQ 1, PS&E, ROW, Utilities, Bidding | | | | Construction | | | | | | | | | | | |
| City Intersection Improvements 2 | | | | | | | | | | | | | RFQ 1, PS&E, Utilities, Bidding | | | | Construction | | | | | | | | | | | |
| E. Pecan Street Improvements | | | | | | | | | | | | | RFQ 1, PS&E, ROW, Utilities | | | | | | | | | | | | | | | |
| Immanuel Road Improvements | | | | | | | | | | | | | RFQ 1, PS&E, ROW, Utilities, Bidding | | | | Construction | | | | | | | | | | | |
| Kelly Lane Phase 3 Improvements | | | | | | | | | | | | | RFQ 1, PS&E, ROW, Utilities, Bidding | | | | Construction | | | | | | | | | | | |
| Main Street Improvements | | | | | | | | | | | | | RFQ 1, PS&E, ROW, Utilities | | | | | | | | | | | | | | | |
| FM 685 Corridor Improvements | | | | | | | | | | | | | | | | | RFQ 3, Study, Schematic | | | | PS&E, ROW, Utilities | | | | | | | |
| Street Reconstruction Packages 2-4 | | | | | | | | | | | | | RFQ 2, PS&E, Utilities, Bidding | | | | Construction | | | | | | | | | | | |
| Picadilly and Central Commerce Drive | | | | | | | | | | | | | | | | | PS&E, Utilities, Bidding | | | | Construction | | | | | | | |
| City Intersection Improvements 1 | | | | | | | | | | | | | | | | | PS&E, Bidding | | | | Construction | | | | | | | |
| E. Pflugerville Parkway Improvements | | | | | | | | | | | | | | | | | Schematic | | | | PS&E, ROW, Utilities | | | | | | | |
| Pfluger Farm Lane North Improvements | | | | | | | | | | | | | | | | | PS&E, ROW, Utilities, Bidding | | | | Construction | | | | | | | |
| SH 45 Frontage Road Improvements | | | | | | | | | | | | | | | | | PS&E, ROW, Utilities, Bidding | | | | Construction | | | | | | | |
| Street Reconstruction Package 1 (HCA) | | | | | | | | | | | | | | | | | PS&E, Utilities, Bidding | | | | Construction | | | | | | | |

Notes: City Intersection Improvements 1 includes Heatherwilde Blvd. at Pecan Street, FM 685 at Pecan Street; City Intersection Improvements 2 includes E. Pflugerville Parkway at FM 685, FM 685 at Copper Mine Overpass, SH 130 at CR 138; Hidden Lakes Drive/Hodde-Weiss at Cele Road are included with Kelly Lane Phase 3; Street reconstructions were bundled by status and geographic location; Street Reconstruction Bundle 1 includes Caldwell's Lane, Lincoln Avenue, Russell Street, and Taylor Avenue; Street Reconstruction Bundle 2 includes Kay Lane, Applewood Drive, Oak Ridge Drive, Cedar Ridge Drive, Meadow Creek Drive, Mountain View Drive, 10th Street, W. Clusters Creek Bend, and Plumbago Drive; Street Reconstruction Bundle 3 includes Great Basin Avenue, Bushmills Road, Picadilly Drive, Pflugerville Loop, Edgemere Drive, Windmere Drive, Yellow Sage Street; Street Reconstruction Bundle 4 includes Grand National Avenue, Rowe Loop, Sullivan Street, Dalshank Street, Algreg Street, Mashburn Street, Option Avenue, Diablo Drive.

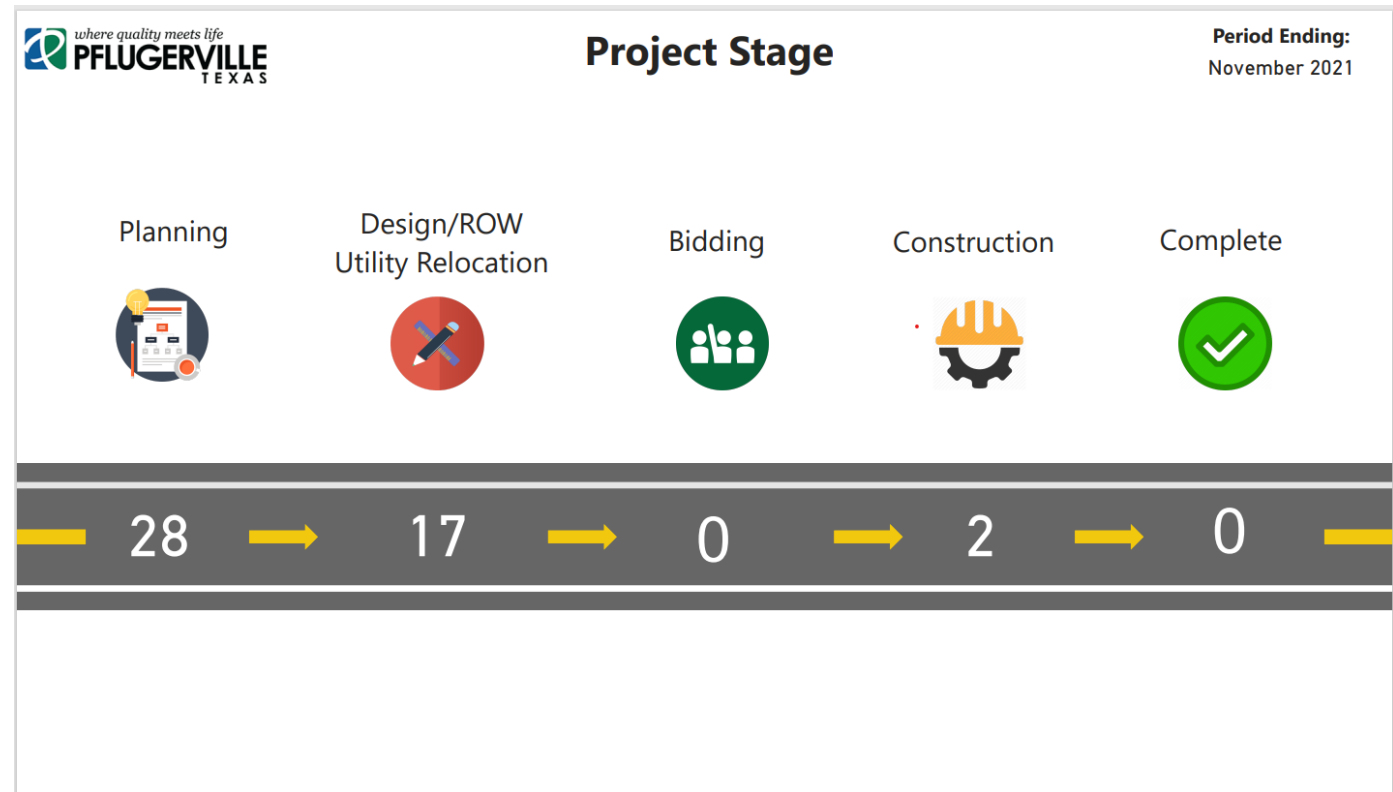
Updated November 2021

<https://www.pflugervilletx.gov/city-government/capital-improvement-program-cip/projects-overview/2020-transportation-bond-projects>



2021 Program Accomplishments

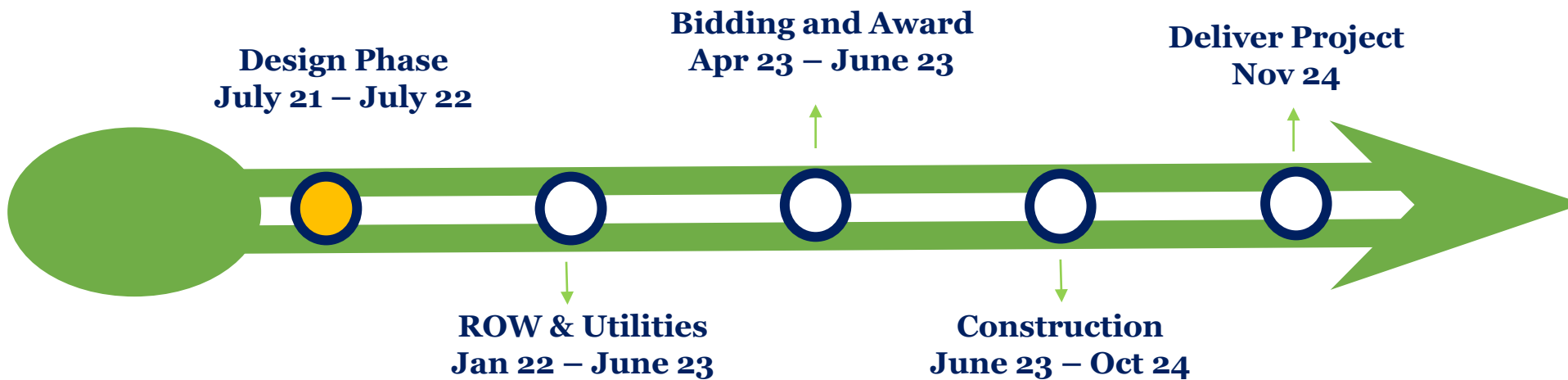
- Created Project Management Information System
- Established Sharepoint Site
- Established Monthly Coordination Meetings
 - Travis County
 - Planning and Development
 - Public Information Office
 - Design Consultants and TxDOT
- Assisted with the preparation of three Request for Qualifications
- Successfully negotiated six Professional Service Agreements with an additional three currently in negotiations





Cameron Road Re-Alignment

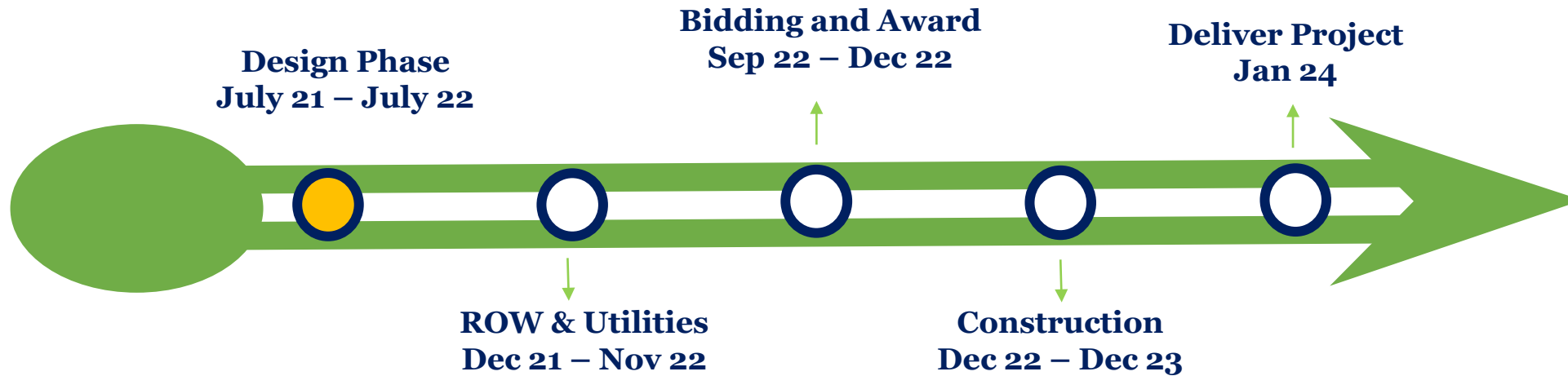
- Design Consultant: K Friese + Associates
- 2-lane interim configuration of an ultimate four-lane urban roadway
- Improvements include:
 - Curb and gutter, underground storm facilities, pedestrian and bicycle facilities





City Intersection Improvements

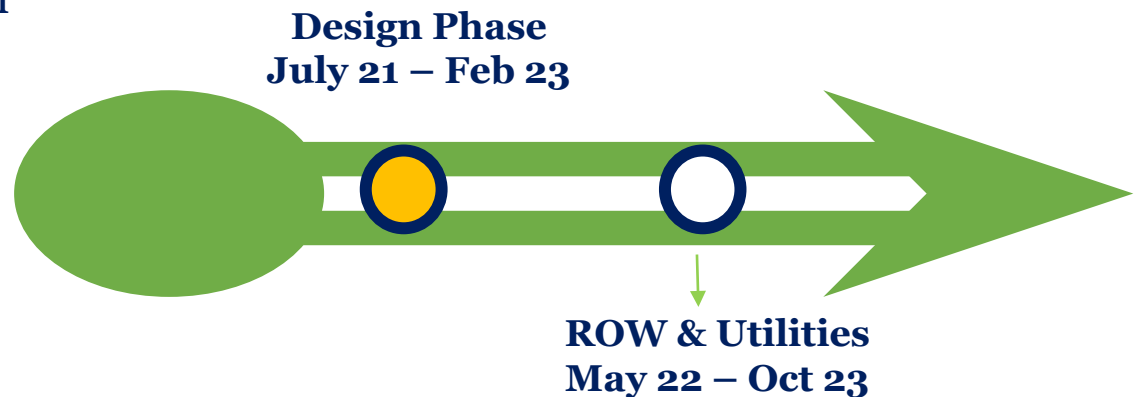
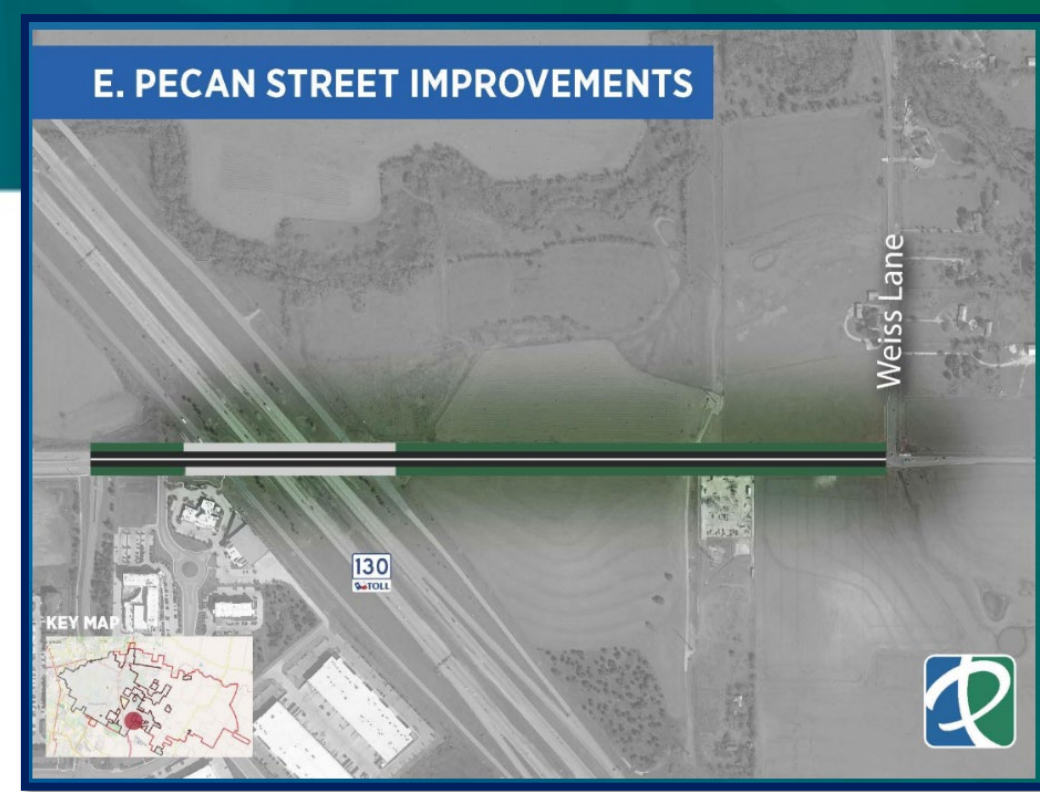
- Design Consultant: Burns & McDonnell
- Design and construction of Intersection Improvements:
 - E. Pflugerville Parkway at FM 685
 - FM 685 at Copper Mine Overpass
- Intersection improvements may include turn lane additions, new or modified traffic signalization, geometric and safety improvements





E. Pecan Street

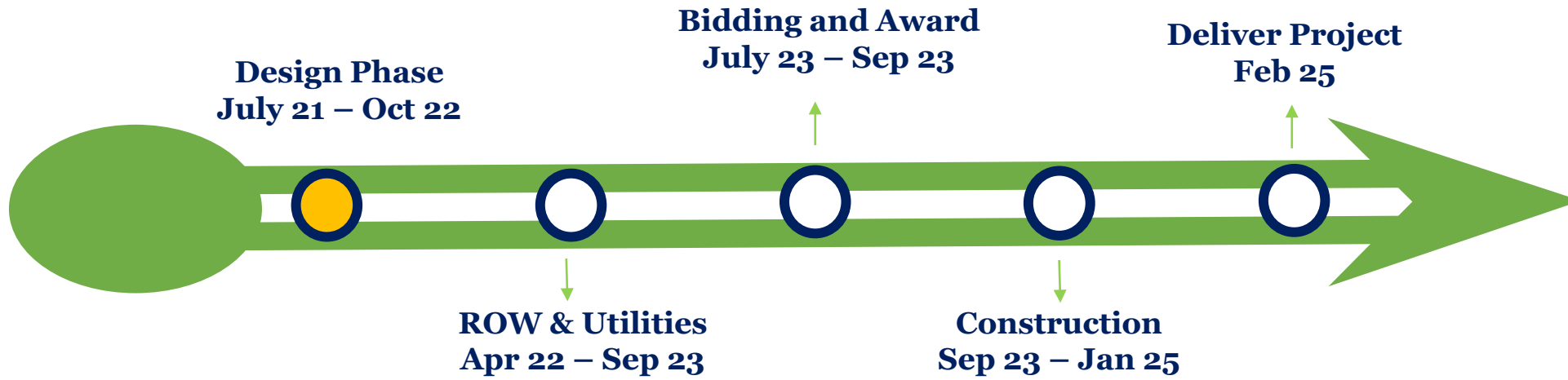
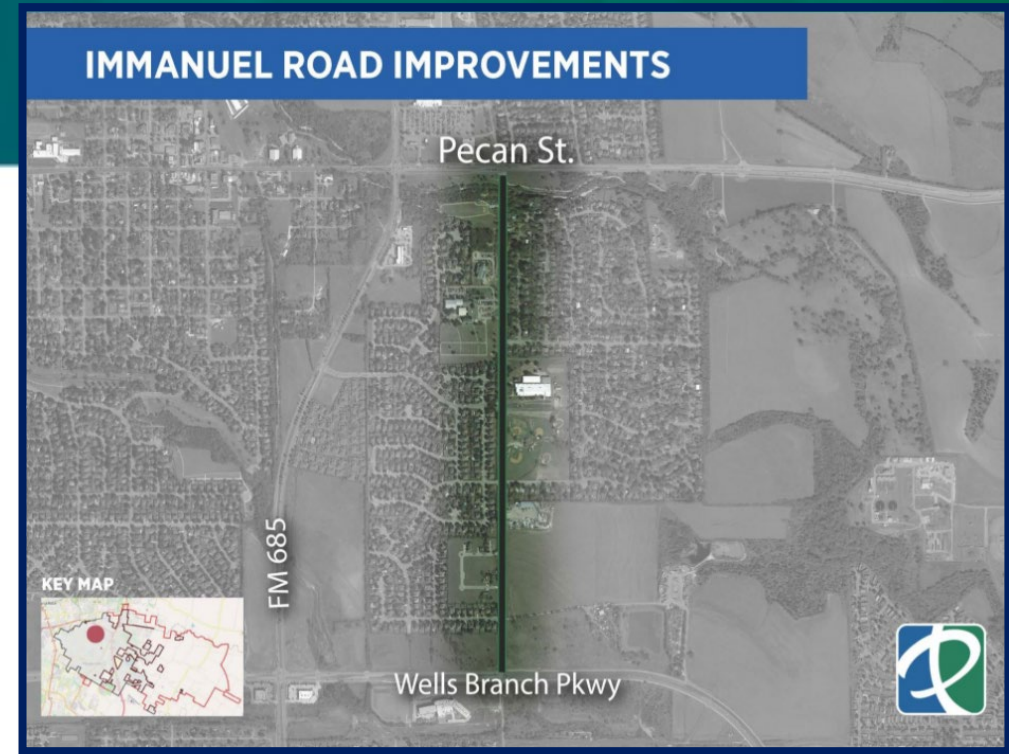
- Design Consultant: Kimley-Horn & Associates
- Preliminary design 6-lane urban roadway with a raised center median
- Improvements include:
 - Curb and gutter
 - Underground storm facilities
 - New bridge over SH 130
 - Pedestrian and bicycle facilities
 - Intersection improvements, and utility relocation
 - Right-of-Way (“ROW”) acquisition is also included.





Immanuel Road

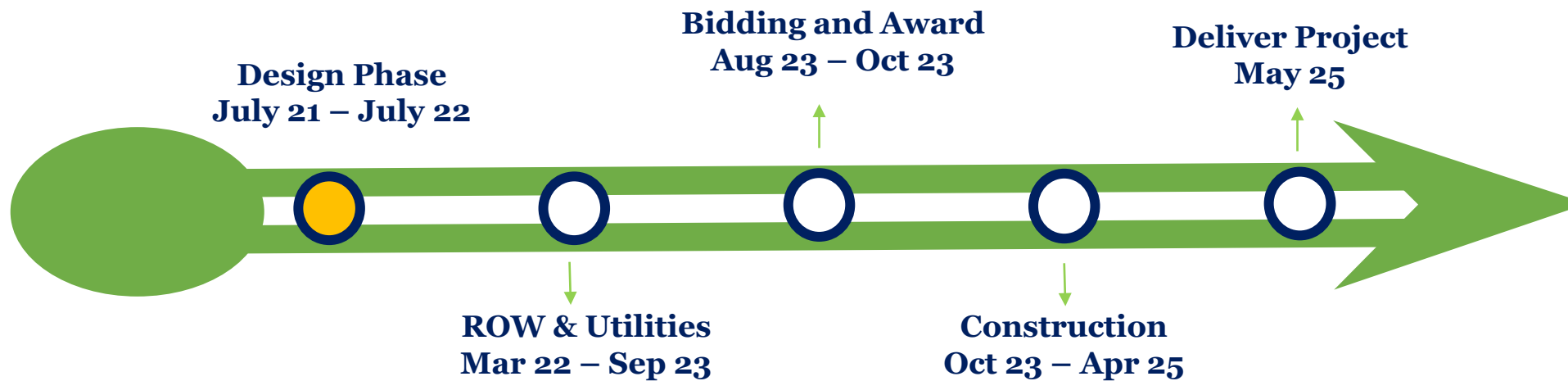
- Design Consultant: Rodriguez Transportation Group
- Design and reconstruction to a three-lane urban collector roadway
- Project includes:
 - Curb and gutter, intersection improvements, bridge improvements, street lighting, underground storm sewer, pedestrian and bicycle facilities.





Kelly Lane Phase 3

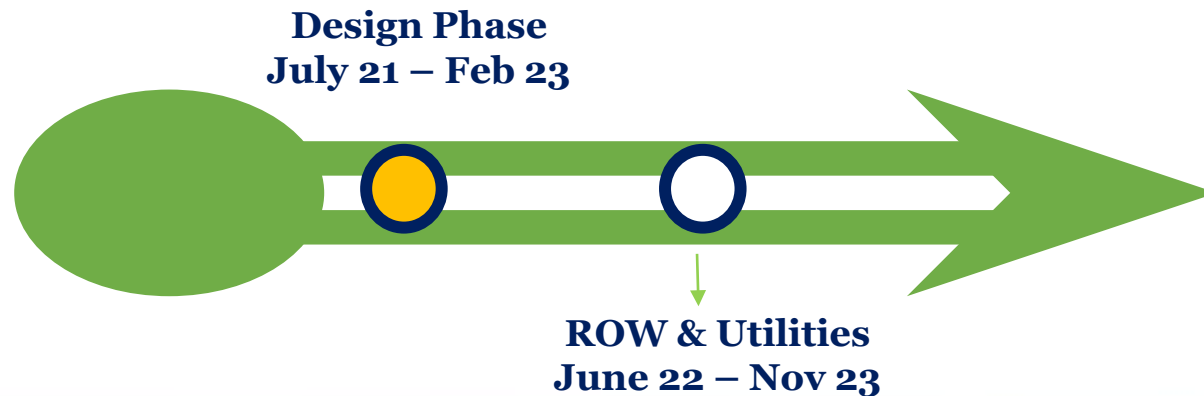
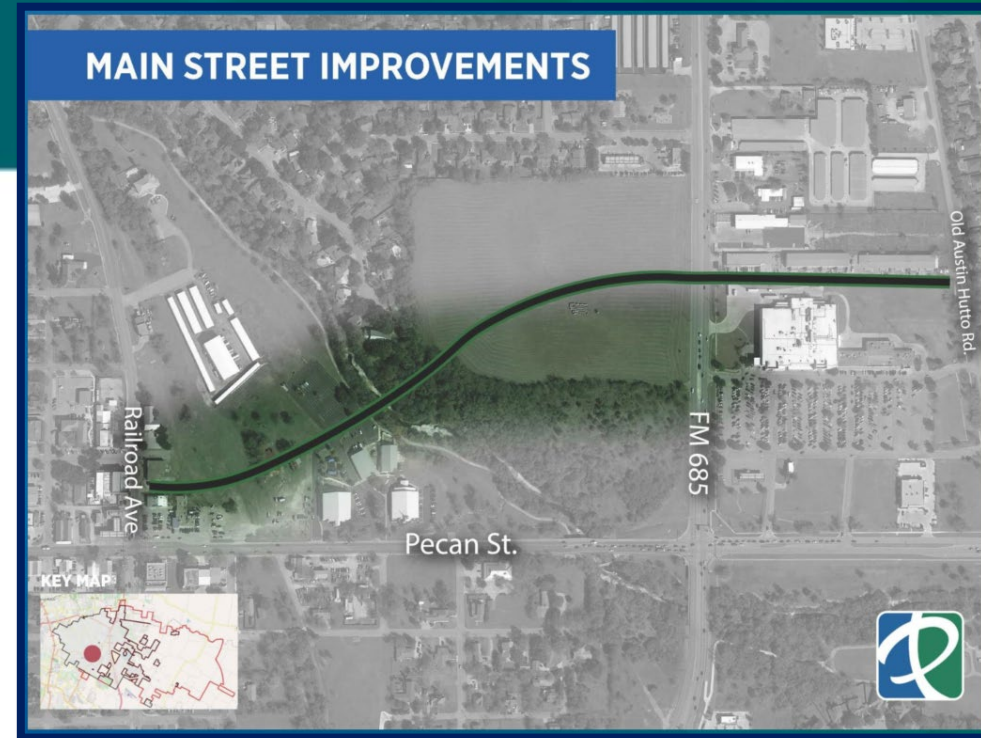
- Design Consultant: Vickrey & Associates
- Design and construction 4-lane urban roadway
- Improvements include:
 - A raised center median including the re-alignment of the current Weiss Lane intersection





Main Street Improvements

- Design Consultant: Cobb, Fendley & Associates
- Preliminary engineering design for a future two-lane urban roadway
- Project includes:
 - Right-of-Way (“ROW”) acquisition,
 - Intersection design for future improvements at the Railroad Avenue, FM 685, and Old Austin Hutto Road intersections and utility relocation
 - Improvements will be in accordance with the Downtown Action Plan





Street Reconstruction Projects

- **Package 1:**

- Applewood Drive
- Cedar Ridge Drive
- Kay Lane
- Meadow Creek Drive
- Mountain View Drive
- Oak Ridge Drive
- Plumbago Drive
- W. Custers Creek Bend
- 10th Street

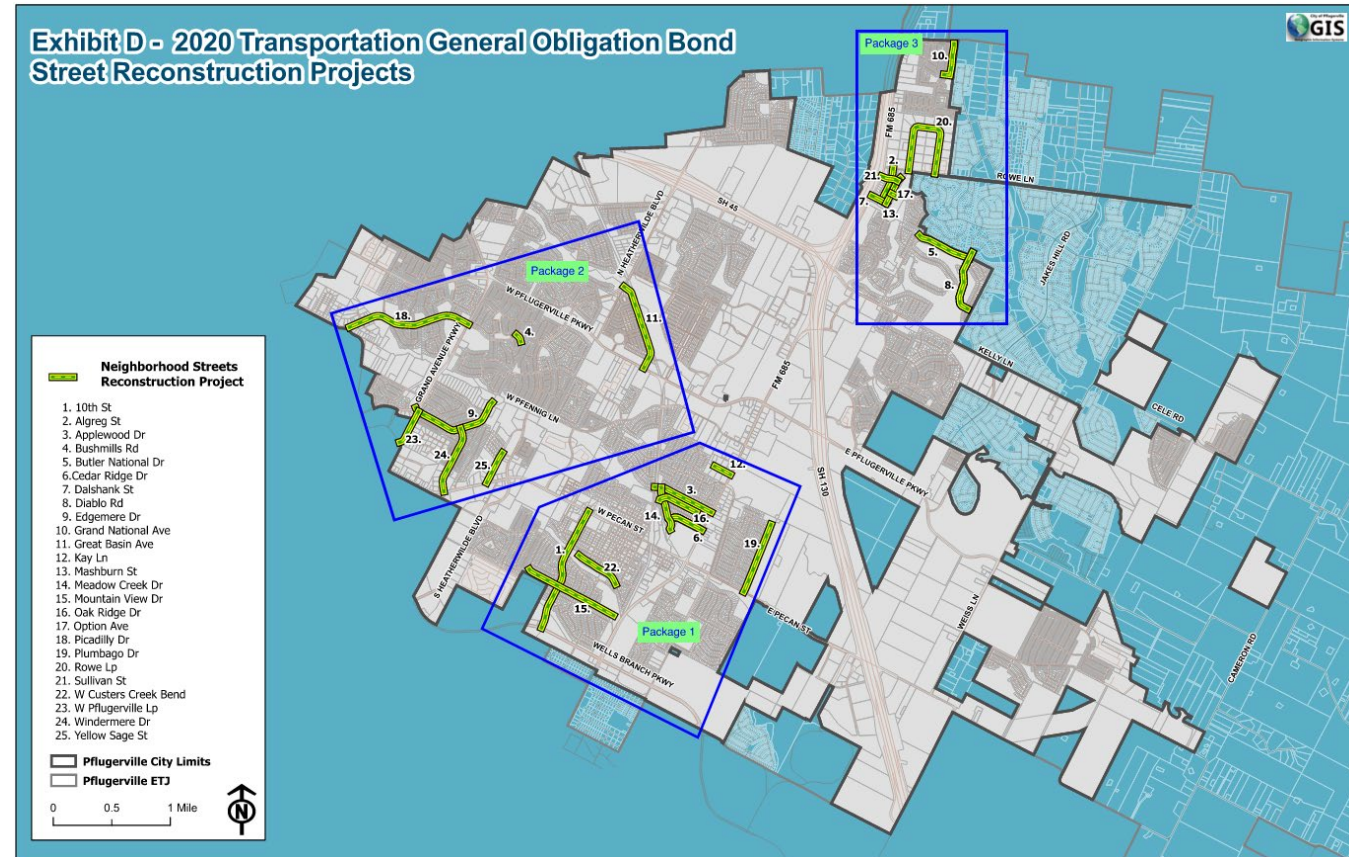
- **Package 2:**

- Bushmills Road
- Edgemere Drive
- Great Basin Ave.
- Picadilly Drive
- W. Pflugerville Loop
- Windmere Drive
- Yellow Sage Street

- **Package 3:**

- Alreg Street
- Butler National Drive
- Dalshank Street
- Diablo Drive
- Grand National Avenue
- Mashburn Street
- Option Avenue
- Rowe Loop

- **Consultant(s) Selection and PSA approval anticipated to go to Council 1/11/22**





2020 Parks GO Bond (Prop B) General Consultant (GC)

Vanir Construction Management, Inc.

Program Manager: Jim Smith

Project Manager: Rufo Reyes

- 18-month initial term (time/material) Not-To-Exceed Agreement FY21 and FY22
- Commence design of 7 of the 9 projects in Year 1 with construction starts scheduled for early 2022
- Program Management tasks includes
 1. Managing the procurement of multiple design consultant
 1. City Trails Improvements (1 design consultant)
 2. Neighborhood Parks Improvements (3 design consultants)
 3. 1849 Park Phase 2 Improvements (1 design consultant)
 2. Community Engagement Support
 3. Design Phase Management
 4. Construction Phase Management
- Available additional services include: Right-of-Way, Environmental and Public Involvement Subconsultant Support

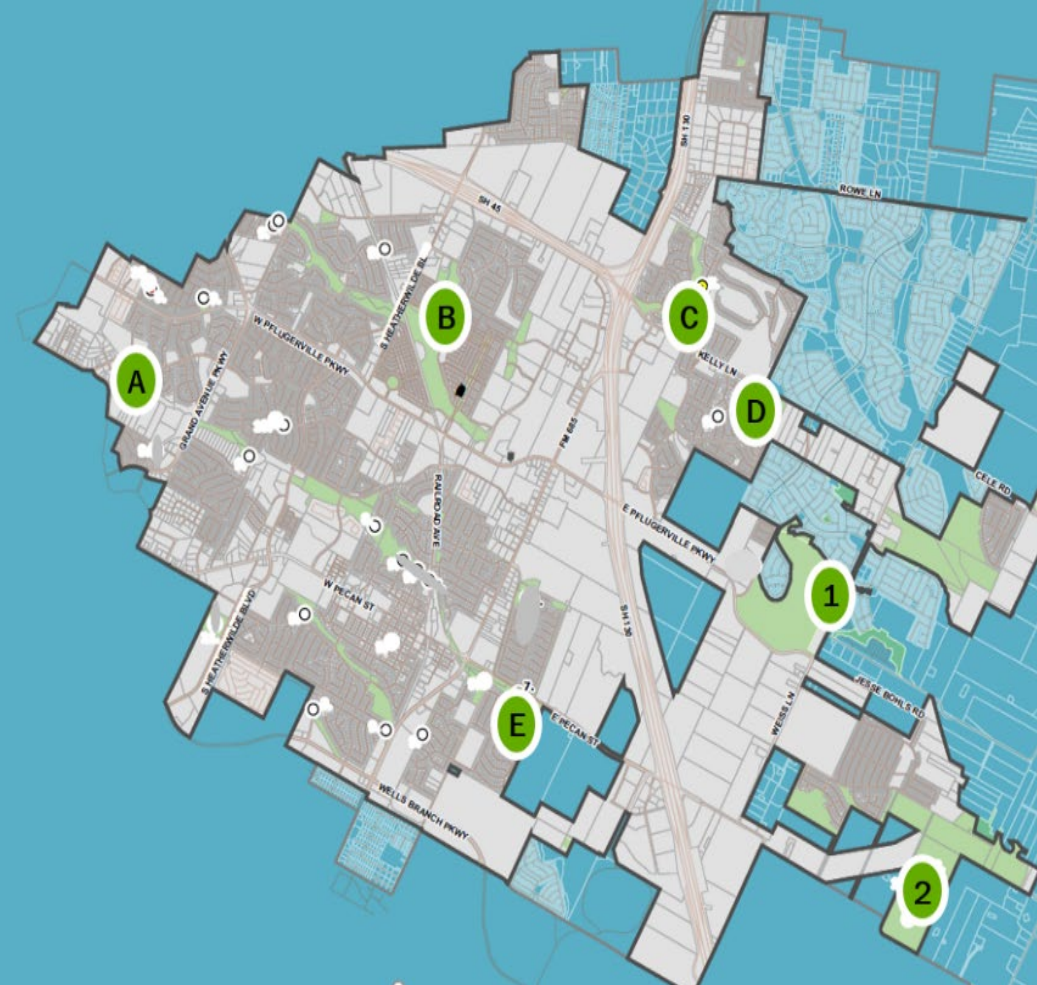
2020 Bond Program Parks Projects Prop B

Mapped Projects

1. Lake Pflugerville Phase 2
2. 1849 Park Phase 2
3. Neighborhood Parks:
 - A. Picadilly
 - B. Wilbarger Phase 2
 - C. Mallard
 - D. Kelly Lane
 - E. Pecan

Projects Not Shown

4. Destination Play Space
5. Trail Improvements City-wide
6. Land Acquisition - 20+ acres





2021 Program Accomplishments

- City Council approved recommended Architect/Engineers July 2021
- Staff issued executed Professional Services Agreements (PSA) and Notice to Proceed (NTP) to each of the Architect/Engineers
- Staff and Vanir conducted Design Kick Off Meetings
- Established Microsoft Teams / SharePoint Site
- Parks Bond website established: <https://www.pflugervilletx.gov/parksbond>
- Architect/Engineers developed project concepts for Staff and Public Feedback
- Project Team (Staff, Vanir, and Architect/Engineers) hosted community engagement meetings for each of the Parks
- Project Team working through floodplain constraints



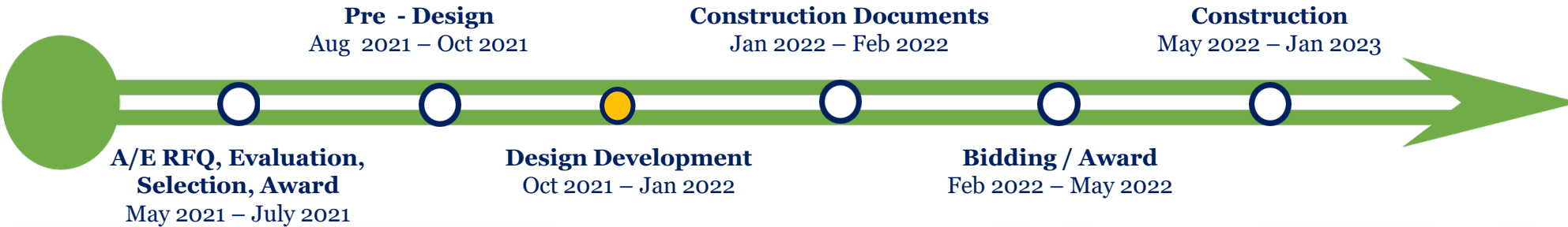
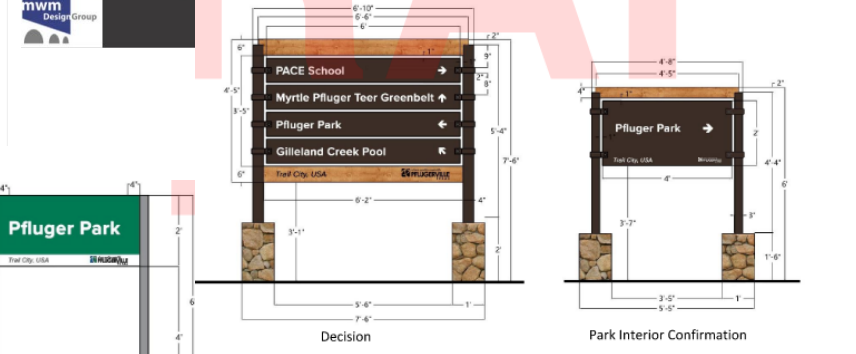
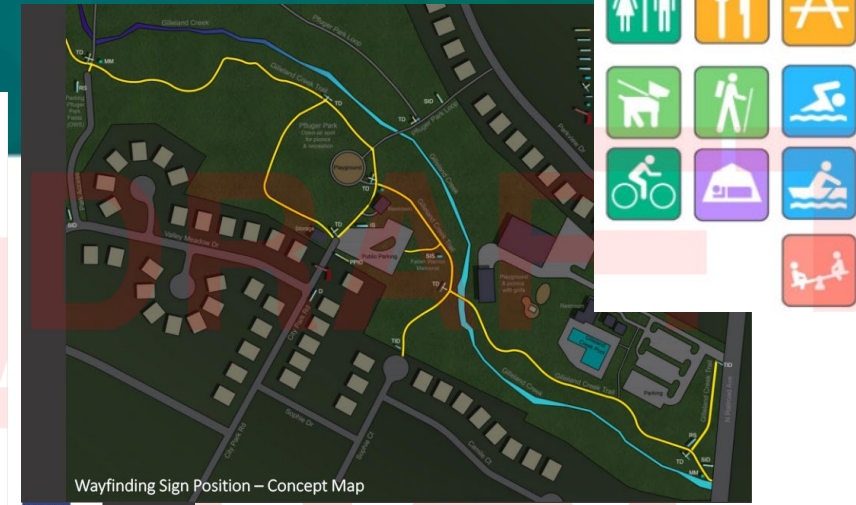
Trails and Wayfinding

Update

- Design Consultant: MWM DesignGroup
- Developed 60% design documents for trails
- Developed DRAFT wayfinding designs and placement standards

Upcoming Activities

- Finalize Wayfinding design and Trails field engineering packages
- Prepare Bid Documents





Pecan Park

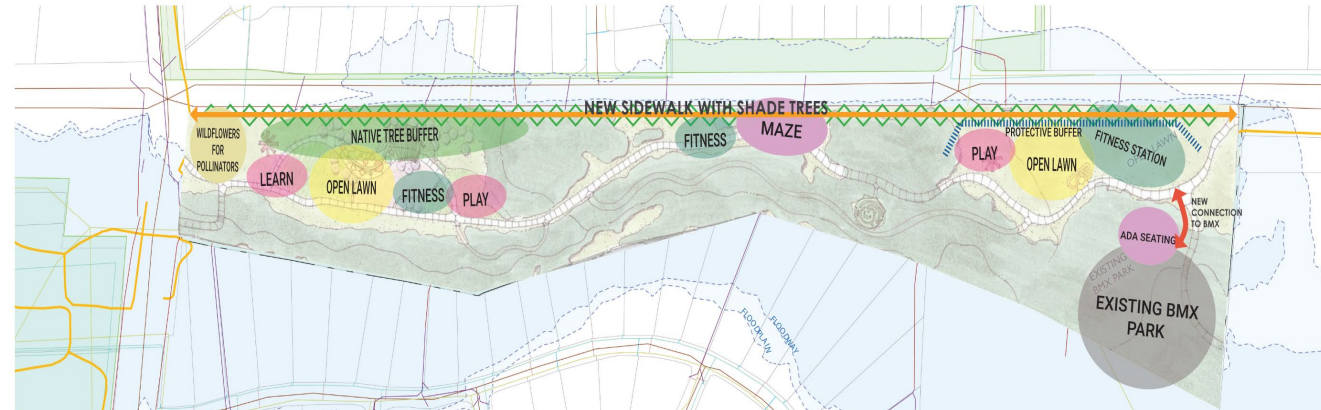
Update

- Design Consultant: Asakura Robinson
- Developed concepts for Feedback
- Hosted 1st community engagement meeting

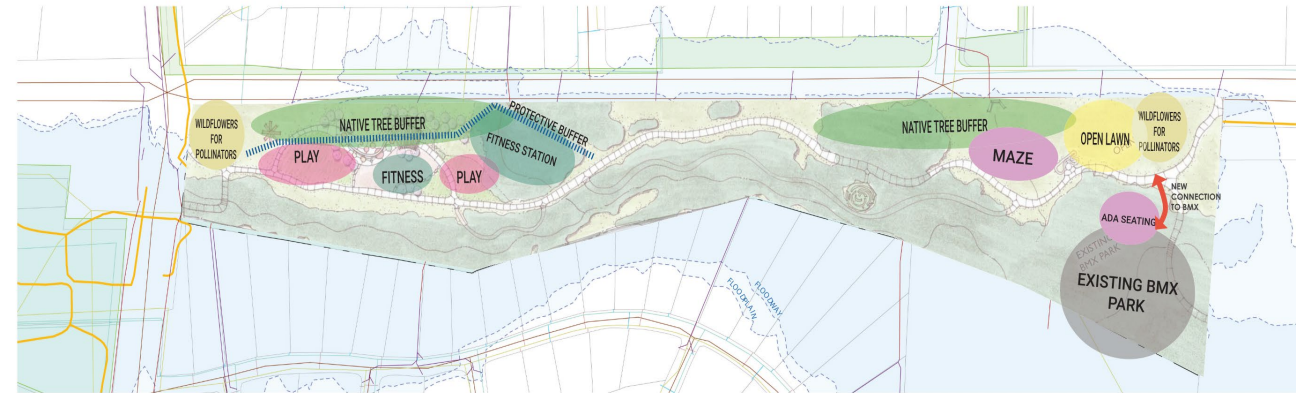
Upcoming Activities

- Finalize concepts for next Community Engagement
- Work through floodplain constraints
- Prepare final design and bid documents

OPTION A: Distributed Amenities



OPTION B: Destination Play and Fitness





Picadilly Park

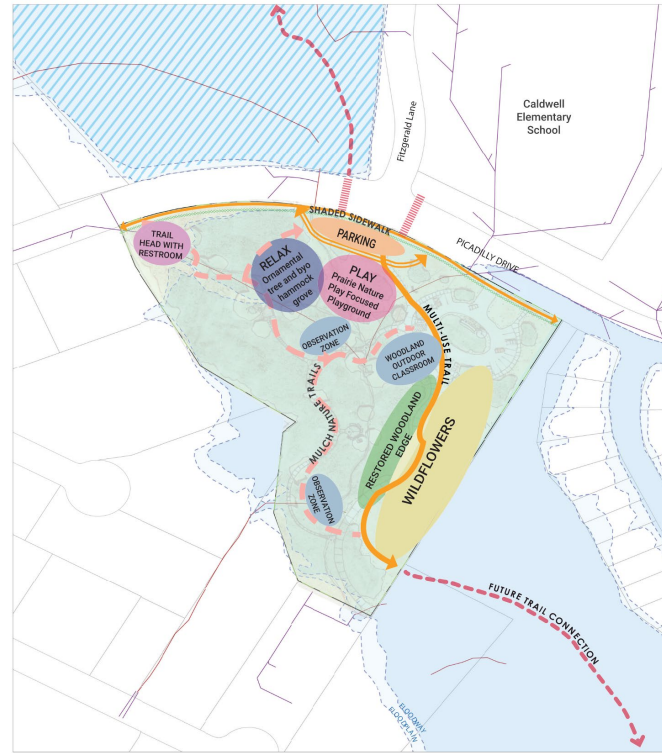
Update

- Design Consultant: Asakura Robinson
- Developed concepts for Feedback
- Hosted 1st community engagement meeting

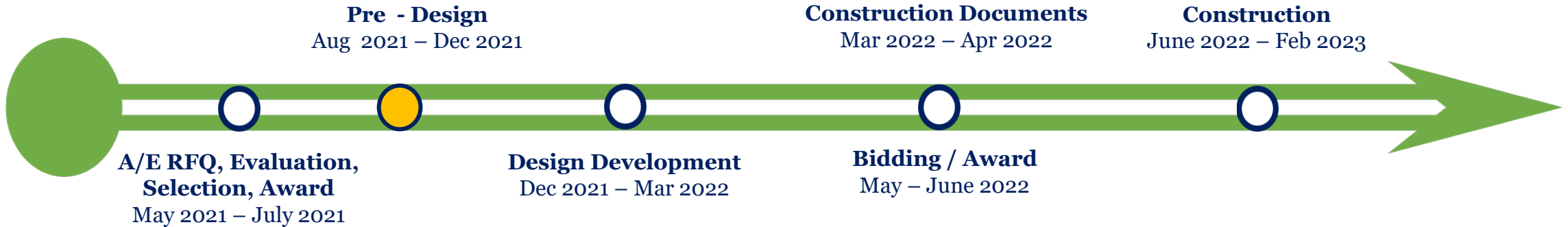
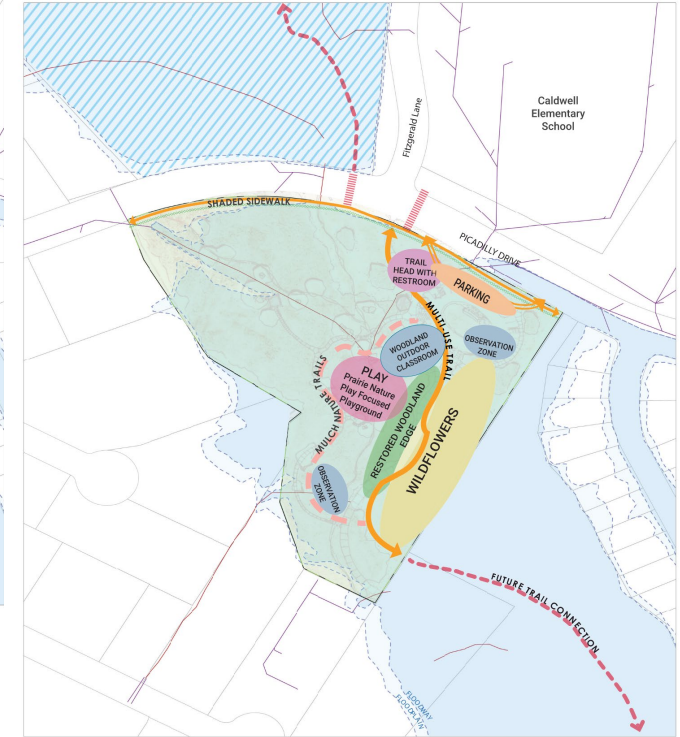
Upcoming Activities

- Finalize concepts for the next Community Engagement
- Work through floodplain constraints
- Prepare final designs and bid documents

OPTION A: Woodland Park



OPTION B: Meadow Park





Kelly Lane Park

Update

- Design Consultant: Dunaway Associates
- Hosted community engagement meeting
- Online survey recently closed

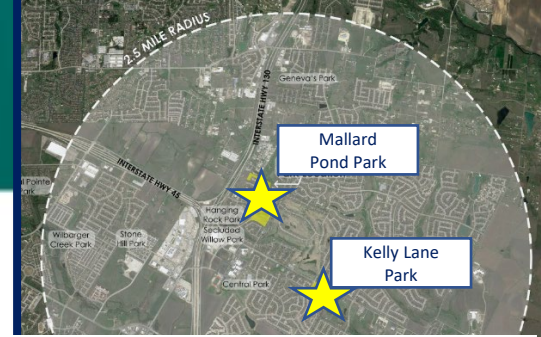
Upcoming Activities

- Finalize concepts for next Community Engagement for Staff Review
- Work through floodplain constraints with Staff
- Prepare 30% Design Documents





Murchison/Mallard Park



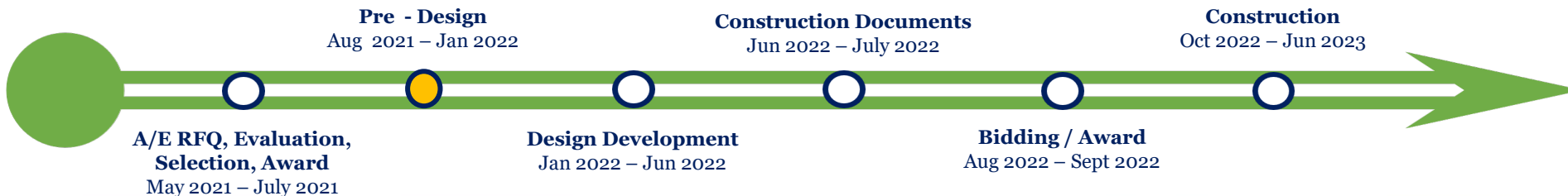
Update

- Design Consultant: Dunaway Associates
- Hosted community engagement
- Online survey recently closed

Upcoming Activities

- Finalize concepts for next Community Engagement
- Work through floodplain constraints
- Prepare 30% Design Documents

WHAT COULD MALLARD POND PARK BECOME?





Wilbarger Creek Park Phase 2

Update

- Design Consultant: Studio 16:19
- Developed concepts for Community Feedback
- Hosted two (2) community engagement meetings
- Online survey posted until mid-November

Upcoming Activities

- Work through floodplain constraints
- Prepare 30% Design Documents



DOG PARK CONCEPT 1

October 25, 2021



DOG PARK CONCEPT 2





2020 Parks GO Bond (Prop C)

- Request for Qualification (RFQ) published 9/22/21
 - Owner's Representative Services for Multi-Generational Recreation Center & City Hall Complex
- 8 Statements of Qualifications (SOQ) received
- A Selection Committee made up of City Staff reviewed and scored the SOQs
- Owner's Rep selection is anticipated to be awarded at a future City Council meeting
- Design consultant selection is TBD

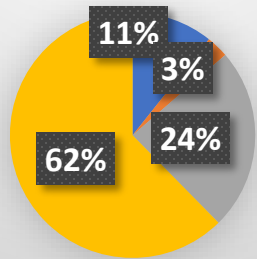


- I. CIP Budget Summary**
- II. Construction Projects**
- III. Design/Planning Projects**
- IV. Projects On the Horizon**



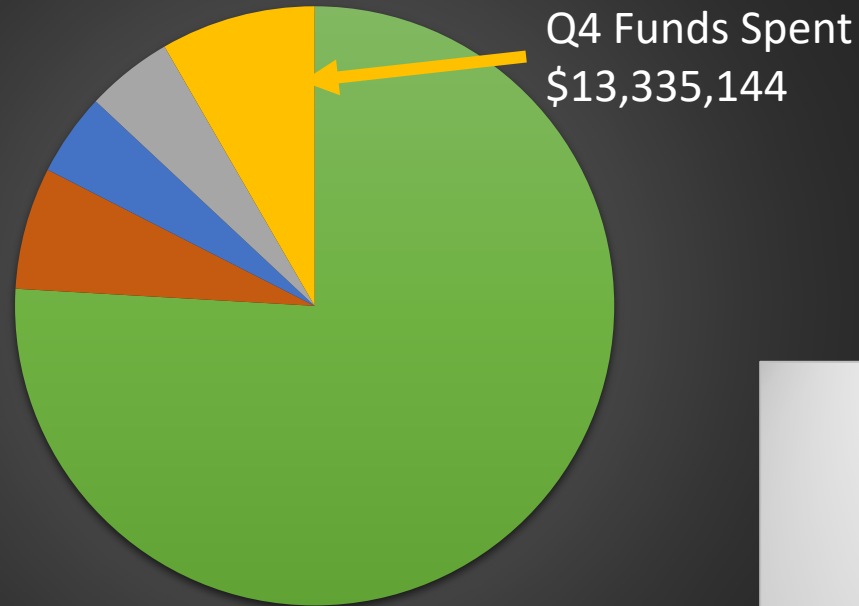
FY21 CIP Budget Summary

FY21 Approved Capital Project Expenses By Categories



■ Transportation ■ Parks ■ Water ■ Wastewater

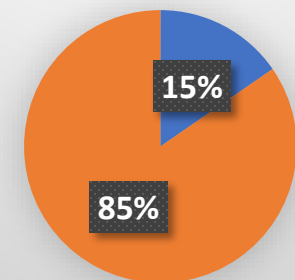
FY21 Budget Spent to Date



■ Project Budget ■ Q1 ■ Q2 ■ Q3 ■ Q4

***31%** of the FY21 Capital Budget Spent to Date

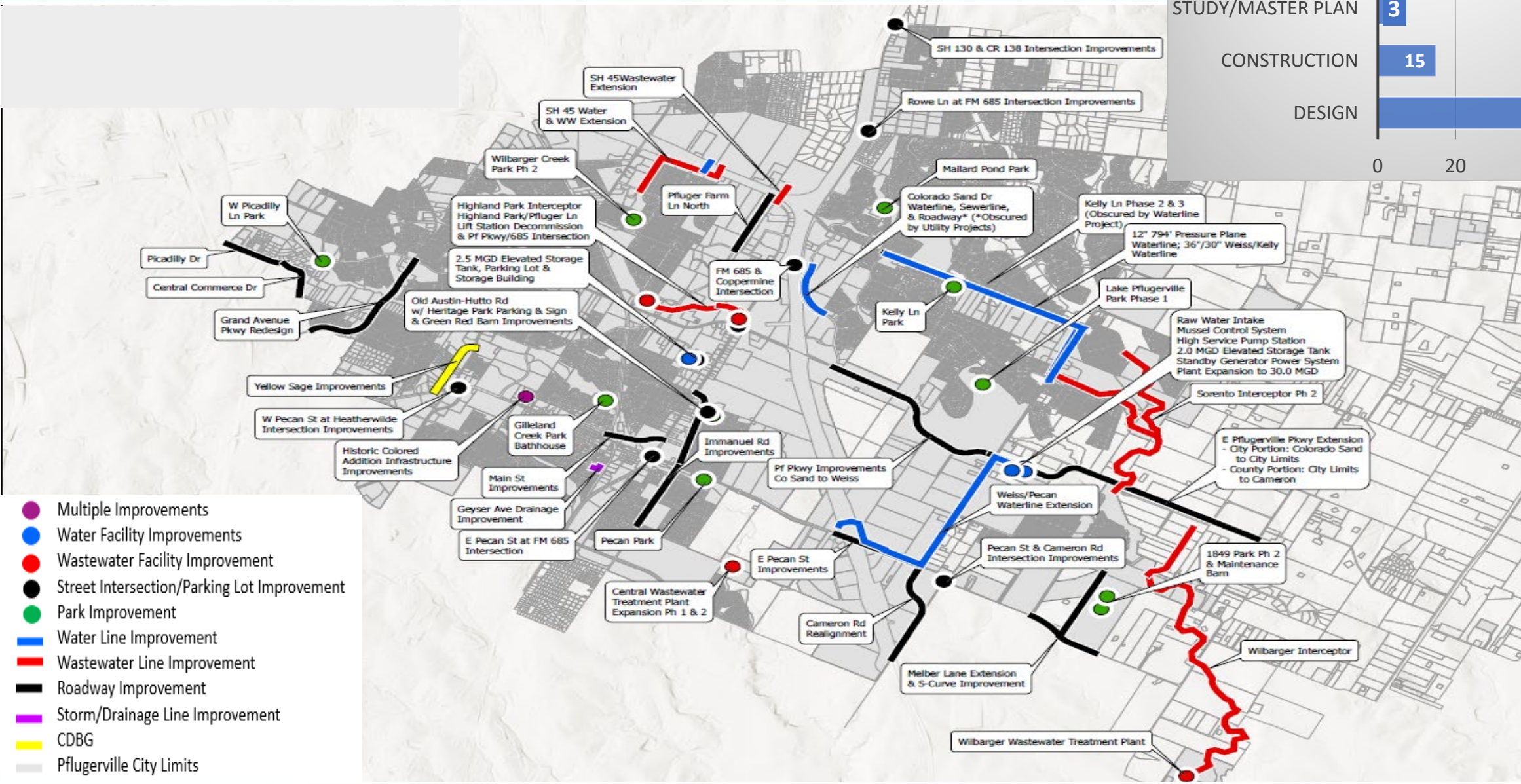
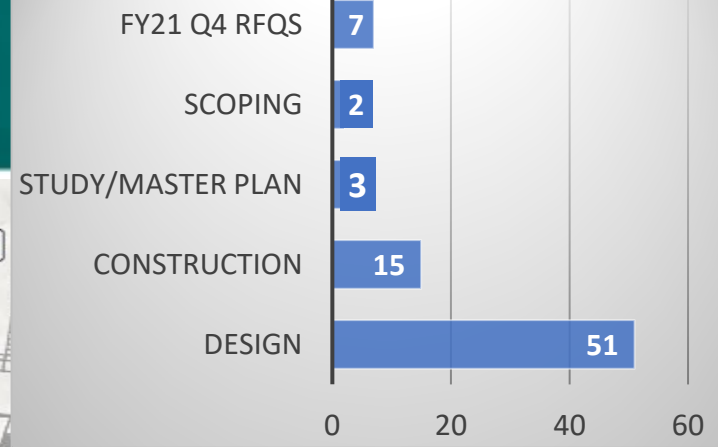
FY21 Approved Capital Project Expenses



■ General Fund Capital Projects \$18,648,000
■ Utility Fund Capital Projects \$102,503,024



Active CIP Projects



- Multiple Improvements
- Water Facility Improvements
- Wastewater Facility Improvement
- Street Intersection/Parking Lot Improvement
- Park Improvement
- Water Line Improvement
- Wastewater Line Improvement
- Roadway Improvement
- Storm/Drainage Line Improvement
- CDBG
- Pflugerville City Limits



Projects Under Construction

Upcoming Construction: Grand Avenue Parkway, Pecan at Heatherwilde, Colorado River Raw Water Intake Screen Replacement, Highland Park Wastewater Interceptor, Lake Pump Station & Water Treatment Plant Backup Generator



CDBG: Yellow Sage

Estimated Pfinish: Complete, pending project acceptance

Approved Construction: \$276,047.16

Current Expended: \$137,195.20





High Service Pump Station Expansion/Colorado River Intake

Estimated Pfinish: December 2021

Approved Construction: \$1,457,577.33

Current Expended: \$1,008,090.51





Pecan Street at FM 685 Intersection Improvement

Estimated Pfinish: December 2021

Approved Construction: \$4,270,230.93

Current Expended: \$1,854,056.96





Lake Pflugerville Phase 1

Estimated Pfinish: January 2022

Approved Construction: \$1,563,388.97

Current Expended: \$598,375.86





Central Wastewater Expansion (Ph. 1)

Estimated Pfinish: June 2022

Substantial Completion: April 2022

Approved Construction: \$42,374,315.24 Current Expended: \$33,149,145.96





Old Austin Hutto Road

Estimated Pfinish: February 2022

Approved Construction: \$3,732,384.28

Current Expended: \$2,671,551.06



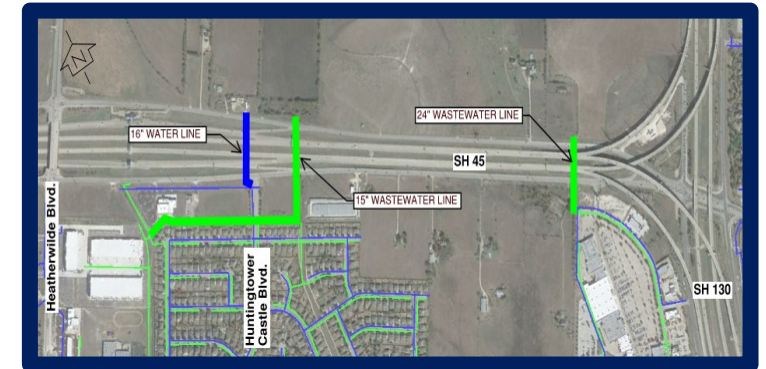


SH 45 Water & Wastewater Lines

Estimated Pfinish: February 2022

Approved Construction: \$2,391,233.51

Current Expended: \$1,802,25810



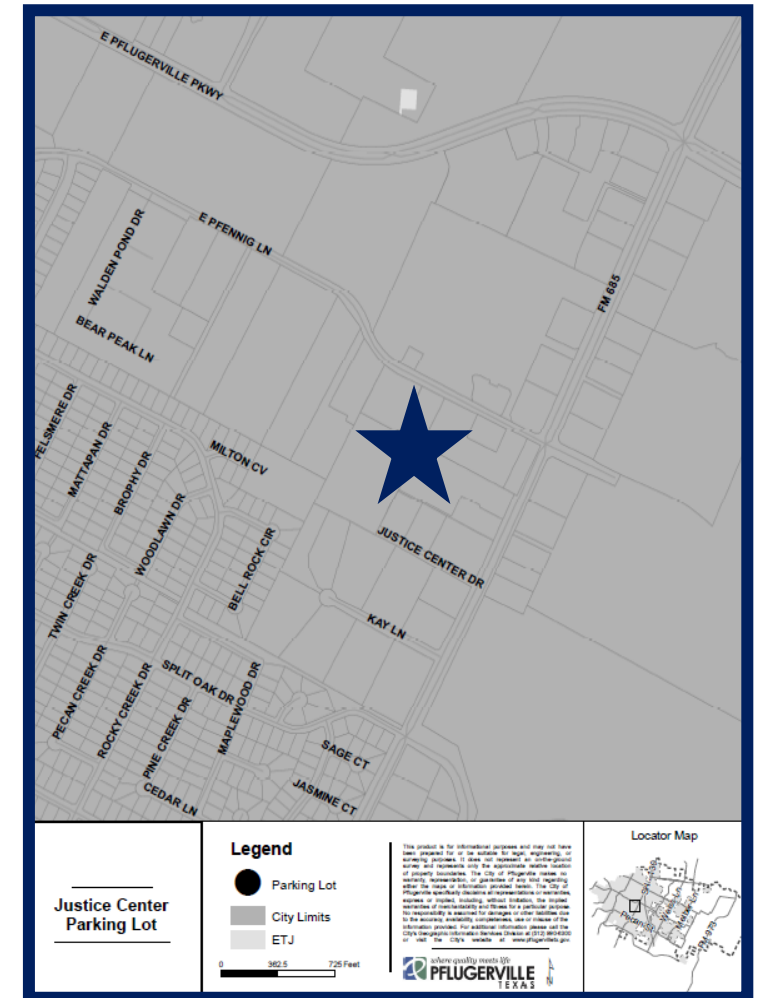


Justice Center Evidence Building

Estimated Pfinish: March 2022

Approved Construction: \$496,957.00

Current Expended: \$120,629.10





2.5 Million Gallon (MG) Elevated Storage Tank

Estimated Pfinish: June 2023

Approved Construction: \$7,451,000.00 Current Expended: \$0



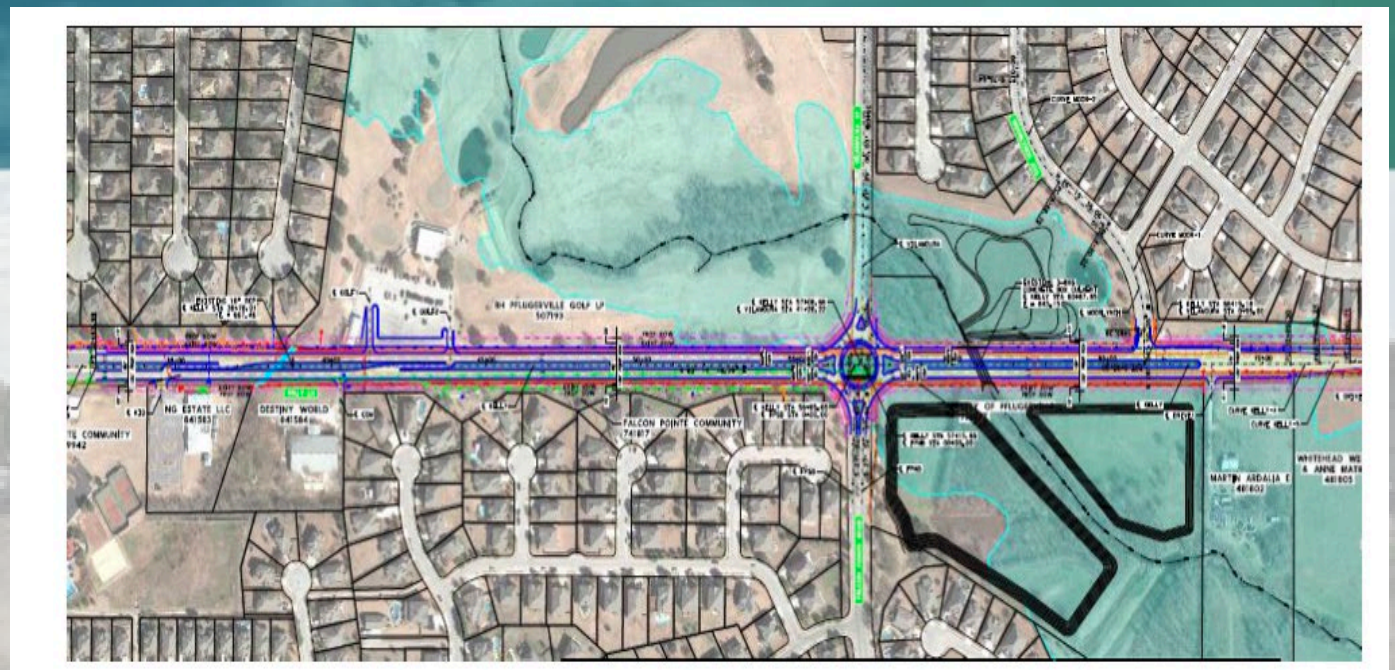
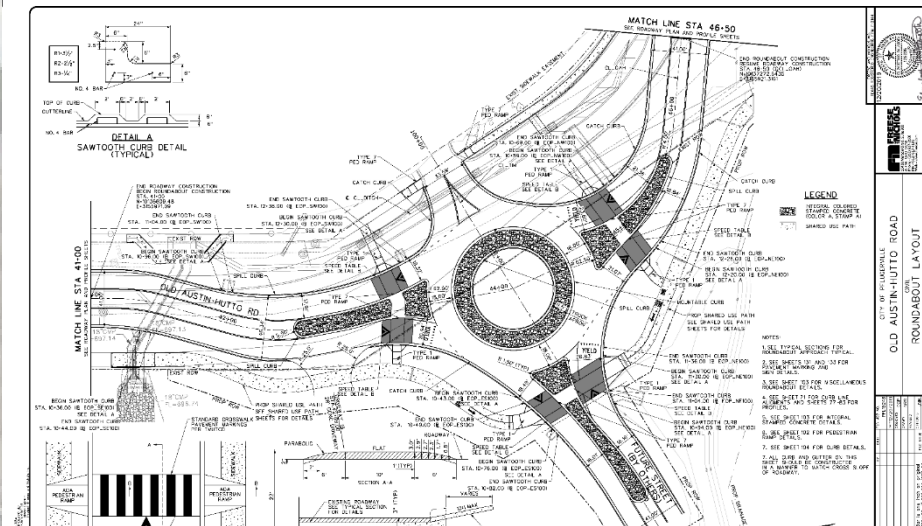


Heatherwilde Phase 2

Estimated Pfinish: July 2022

Approved Construction: \$1,454,000.00 Current Expended: \$524,698.32





Projects in Design



Transportation Projects

| Project | Phase | Funding Source | Design % Complete | ROW | Public Meeting | Anticipated Design Pfinish | Anticipated Bid Date |
|---|--------|-------------------|-------------------|----------|----------------|--|--|
| Colorado Sand Drive | Design | GO Bond | 60% | 50% | TBD | Pending Develoment Coordination | TBD |
| Kelly Lane Phase 2 | Design | GO Bond | 100% | 100% | Complete | Complete | Pending Utility Coordination |
| E. Pflugerville Pkwy Realignment (Jesse Bohls) | Design | CO/GO Bond | 90% | 0% | TBD | Pending ROW and ILA from Travis County | Pending ROW and ILA from Travis County |
| Rowe Lane at FM 685 Design | Design | CO Bond | 95% | Complete | NA | December 2021 | Pending TxDOT Coordination |
| E Pflugerville Pkwy (Colorado Sand to Weiss) Design | Design | CO Bond | 90% | TBD | TBD | Feb-22 | NA |
| Melber Lane | Design | CO/Developer | 15% | 0% | NA | Pending Right-of-Entry | TBD |
| Historic Colored Addition Infrastructure Improvements | Design | GF/UF/GO Bond | 100% | NA | Complete | Complete | Pending Utility Relocation |
| Cameron Road All-Way Stop | Design | TIA/Travis County | 100% | NA | NA | Jul-21 | Pending ILA |
| Picadilly Drive | Design | CO/GO Bond | 100% | NA | Complete | Complete | Pending Utility Coordination |
| Central Commerce Drive | Design | CO/GO Bond | 100% | NA | Complete | Complete | Pending Utility Coordination |



Wastewater Projects

| Project | Phase | Funding Source | Design % Complete | ROW | Public Meeting | Anticipated Design Pfinish | Anticipated Bid Date |
|--|--------|----------------|-------------------|-----|------------------|---------------------------------|----------------------|
| Central WWTP Expansion Phase 2 | Design | Utility Fund | 30% | NA | NA | June 2022 | Sept-22 |
| Central WWTP Expansion Owner's Representative Services (ORS) Phase 1 & 2 | Design | Utility Fund | NA | NA | NA | ORS through life of the Project | NA |
| Sorento WW Interceptor Ph 2 | Design | Utility Fund | 60% | 0% | EID Mtg Complete | May-22 | Jul-22 |
| Wilbarger Creek Interceptor | Design | Utility Fund | 40% | 0% | EID Mtg Complete | Jun-22 | Feb-23 |
| Wilbarger WWTP | Design | Utility Fund | 25% | NA | EID Mtg Complete | Dec-22 | Mar-23 |



Water Projects

| Project | Phase | Funding Source | Design % Complete | ROW | Public Meeting | Anticipated Design Pfinish | Anticipated Bid Date |
|--|--------|----------------|-------------------|-----|-------------------|---------------------------------|-------------------------|
| Water Treatment Plant Expansion to 30MGD & Pump Station at WTP | Design | Utility Fund | 60% | NA | EID Mtg. Complete | April 2022 | May 2022 |
| WTP Expansion Owner's Representative Services (ORS) | Design | Utility Fund | NA | NA | NA | ORS Through life of the Project | NA |
| 2.0 MG North Elevated Storage Tank | Design | Utility Fund | 100% | NA | NA | Complete | Pending TCEQ Approval |
| Weiss Lane/Pecan Street Water Lines (42"/36") | Design | Utility Fund | 100% | 50% | NA | Complete | Pending ROW Acquisition |
| Water Lines to Convert East Pressure Zone to 800' PZ | Design | Utility Fund | 100% | 50% | NA | Complete | Pending ROW Acquisition |
| Weiss Lane/Kelly Lane Water Lines | Design | Utility Fund | 5% | 0% | NA | Oct-22 | Dec-22 |
| Water Lines in New 800' Pressure Zone (12") | Design | Utility Fund | 5% | 0% | NA | Oct-22 | Dec-22 |



Parks Projects

| Project | Phase | Funding Source | Design % Complete | ROW | Public Meeting | Anticipated Design Pfinish | Anticipated Bid Date |
|--|--------|----------------|-------------------|-----|----------------|----------------------------|----------------------|
| Gilleland Creek Pool Bath House Improvements | Design | CO Bond | 40% | NA | NA | Jan-22 | Feb-22 |
| 1849 Park Maintenance Barn | Design | CO Bond | 40% | NA | NA | Dec-21 | Jan-22 |
| Green Red Barn Improvements | Design | CO Bond | 0% | NA | NA | Feb-22 | Feb-22 |



Master Plan/Studies

| Project | Phase | Funding Source | Design % Complete | ROW | Public Meeting | Anticipated Design Pfinish | Anticipated Bid Date |
|--------------------------|---------|----------------|-------------------|-----|----------------|----------------------------|----------------------|
| Drainage Master Plan | Design | GF | 70% | NA | Complete | May 2022 | NA |
| Drainage Impact Fee | Design | GF | 70% | NA | Complete | May 2022 | NA |
| Central WWTP Flood Study | On-Hold | Utility Fund | 0% | NA | NA | Pending levee completion | NA |



On the Horizon

FACILITIES

- Justice Center Master Plan
- Justice Center Parking Lot

PARKS

- Playground Replacement Program
- Rec and Senior Center CMR (TBD)
- Rec and Senior Center Design
- Lake Pflugerville Phase 2
- Destination Play space
- Parks Specifications and Details Update

TRANSPORTATION

- NB FM 685/Kelly Lane
- SB FM 685/Kelly Lane
- Rowe Lane Study
- SH130 Corridor Study
- SH45 Frontage Road

UTILITIES - WASTEWATER

- 27-inch Kelly Ln Interceptor
- 15-inch N. Wilbarger WW Interceptor

UTILITIES - WATER

- Colorado River Raw Water Line
- Reclaimed Water Master Plan
- 20-inch SH 130 Water Lines





Questions?

www.pflugervilletx.gov/projects
512-990-6400

