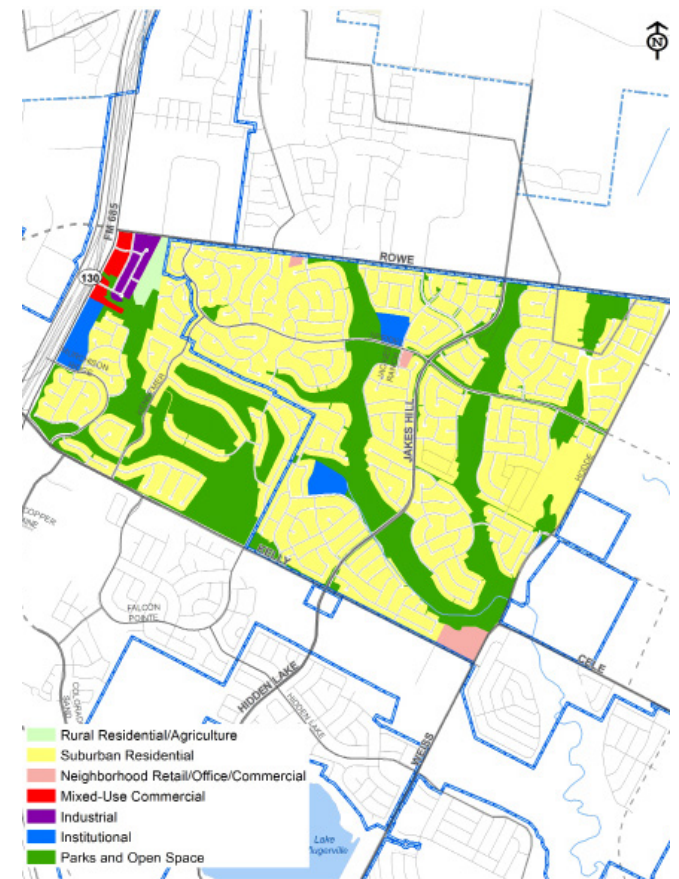


ASPIRATIONAL ACTIONS

- Increase access to parks, open space and trails, with safety enhancements such as lighting along trails and streets feeding into the trail system, with particular emphasis on school access and leveraging the Wilbarger Creek tributaries.
 - Develop the potential for the Wilbarger Creek tributaries by completing gaps in the trails while also creating connections to nearby commercial and retail areas. Include wayfinding to encourage use for transportation, particularly school access.
 - Enhance Weiss, Hodde Lane, Kelly Lane and Rowe Lane with improvements to support comfort for people using bikes or walking.
 - Work with TXDOT to establish the continuation of Rowe Lane for eastward connectivity, particularly to create a grade-separated crossing of SH 130.
 - Invest in infrastructure as well as strategic deployment of incentives to support development and redevelopment along SH 130 as a commercial mixed-use area, albeit less intense than other areas due to limited site depth and proximity to low-density residential uses. Deploy use transitions for compatibility.
 - Promote this district as a target area for potential local business startup opportunities given some of the older commercial and industrial spaces available, presumably with lower cost-of-entry.
- Encourage more opportunities for neighborhood services within this district and the surrounding districts.

THE VILLAGES DISTRICT

Map 8.11. The Villages District



This district is almost entirely comprised of single-family residential neighborhoods in a suburban development pattern, split through the middle by a Wilbarger Creek tributary. The greenspaces along the creek represent an approach to park and open space development that is replicable in multiple areas of Pflugerville, having been leveraged to create a trail network interconnecting the neighborhoods and schools. In addition, this district contains the only golf course in Pflugerville. The surrounding streets of Kelly Lane, Weiss/Hodde Lane and Rowe Lane represent opportunities to use transportation infrastructure to define the character and resolve bike and pedestrian connectivity issues. Residents of this district must look beyond its boundaries to access services, entertainment and economic opportunity, making connectivity a critical issue now and in the future.