

**ORDER APPROVING ANNEXATION OF CERTAIN LAND WITHIN
TRAVIS COUNTY MUNICIPAL UTILITY DISTRICT NO. 17**

WHEREAS, Travis County Municipal Utility District No. 17 (“District”) was created by the Texas Commission on Environmental Quality and has organized pursuant to Chapters 49 and 54 of the Texas Water Code; and

WHEREAS, §43.071(e) of the Texas Local Government Code provides a process for certain municipal annexations of land within a municipal utility district without annexation of all land within the municipal utility district and without dissolution of said district; and

WHEREAS, the City of Pflugerville has requested landowners within the District to consent to and petition for annexation of approximately **2.150 acres** within the boundaries of the District; and

WHEREAS, the Board of Directors of the District have reviewed the request for the District’s approval of such proposed annexation, NOW, THEREFORE,

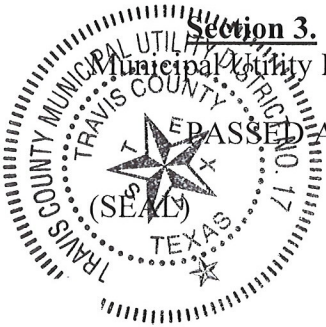
BE IT ORDERED BY THE BOARD OF DIRECTORS OF THE DISTRICT THAT:

Section 1. The Board of Directors of the District hereby approves and consents to annexation by the City of Pflugerville of the real property described in Exhibit “A” attached hereto and incorporated herein for all purposes pursuant to Local Government Code, §43.071(e)(1)(A).

Section 2. The District’s Secretary is hereby directed to provide a certified copy of this Order to the City Secretary of the City of Pflugerville and to file this Order within the District’s official records.

Section 3. This Order Approving Annexation of Certain Land within Travis County Municipal Utility District No. 17 shall be effective from and after its adoption.

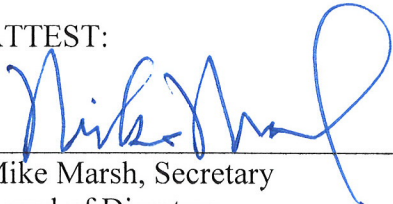
~~PASSED AND APPROVED~~ this 13th day of June, 2013.





Frank Caldwell, President
Board of Directors

ATTEST:



Mike Marsh, Secretary
Board of Directors

EXHIBIT "A"

TRACT 2 – 2.150 ACRES
FIELD NOTES & MAP



LAND DEVELOPMENT ENVIRONMENTAL TRANSPORTATION WATER RESOURCES SURVEYING

FIELD NOTES
FOR
RIGHT OF WAY ANNEXATION
TRACT 2

A 2.150 acre, or 93,670 square feet more or less, tract of land out of the remaining portion of a called 119.023 acre tract recorded in Document No. 2012164042 of the Official Public Records of Travis County, Texas, out of the remaining portion of a called 237.56 acre tract of land recorded in Document No. 2012164042 of the Official Public Records of Travis County, Texas and a portion of Weiss Lane, a variable width right of way, out of the John C. Bray, Survey No. 10, Abstract 73, in the City of Pflugerville, Travis County, Texas. Said 2.150 acre tract being more fully described as follows, with the bearings based on the North American Datum of 1983 (CORS 1996), from the Texas Coordinate System established for the Central Zone:

- BEGINNING: From a found ½" iron rod with yellow cap marked "Pape-Dawson", a point in the east right of way line of said Weiss Lane, the northwest corner of said called 119.023 acre tract and the southwest corner of Lot 3 out of the Final Plat of Pflugerville Industrial Park recorded in Document No. 200800320 of the Official Public Records of Travis County, Texas;
- THENCE: S 40°15'23" E, departing the east right of way line of said Weiss Lane, along and with the north line of said called 119.023 acre tract and the south line of said Lot 3, a distance of 31.42 feet to a found ½" iron rod with yellow cap marked "Pape-Dawson";
- THENCE: S 54°25'39" W, departing the north line of said called 119.023 acre tract and the south line of said Lot 4, over and across said called 119.023 acre tract a distance of 836.42 feet to a found ½" iron rod with yellow cap marked "Pape-Dawson", a point in a south line of said called 119.023 acre tract and a point in the north line of a called 2.0 acre tract recorded in Document No. 2000087383 of the Official Public Records of Travis County, Texas;
- THENCE: N 35°33'54" W, along and with a south line of said called 119.023 acre tract and the north line of said called 2.0 acre tract, a distance of 27.41 feet to a found ½" iron rod, a southwest corner of said called 119.023 acre tract, the northwest corner of said called 2.0 acre tract and a point in the east right of way line of said Weiss Lane;

THENCE: S 54°26'42" W, departing a south line of said called 119.023 acre tract, along and with the west line of said called 2.0 acre tract and the east right of way line of said Weiss Lane, at a distance of 260.17 feet passing the southwest corner of said called 2.0 acre tract and the northwest corner of a called 2.0 acre tract recorded in Volume 13357, Page 889 of the Official Public Records of Travis County, Texas, continuing along and with the west line of said called 2.0 acre tract and the east right of way line of said Weiss Lane, a total distance of 520.40 feet to a found ½" iron rod, the southwest corner of said called 2.0 acre tract, the northwest corner of the aforementioned 237.56 acre tract and a point in the east right of way line of said Weiss Lane;

THENCE: S 35°35'24" E, departing the east right of way line of said Weiss Lane, along and with the south line of said 2.0 acre tract and the north line of said called 237.56 acre tract, a distance of 27.57 feet to a set ½" iron rod with yellow cap marked "Pape-Dawson", a point in the north line of said called 237.56 acre tract and a point in the south line of said called 2.0 acre tract;

THENCE: Departing the north line of said called 237.56 acre tract and the south line of said called 2.0 acre tract, over and across said called 237.56 acre tract the following calls and distances;

S 54°25'39" W, a distance of 484.71 feet to a set ½" iron rod with yellow cap marked "Pape-Dawson";

THENCE: N 35°25'35" W, at a distance of 28.83 feet passing the west line of said called 237.56 acre tract and the east right of way line of said Weiss Lane, continuing over and across said Weiss Lane for a total distance of 80.48 feet to a calculated point, a point in the west right of way line of said Weiss Lane;

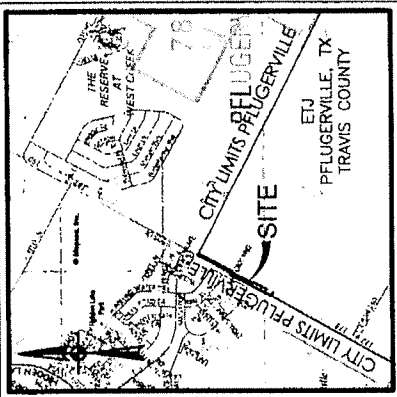
THENCE: N 54°09'32" E, along and with the west right of way line of said Weiss Lane, a distance of 1008.29 feet to a calculated point, a point in the west right of way line of said Weiss Lane;

THENCE: S 35°33'54" E, departing the west right of way line of said Weiss Lane, over and across said Weiss Lane, a distance of 57.79 feet to a calculated point, a point in the east right of way line of said Weiss Lane and a point in the west line of the aforementioned 119.023 acre tract;

THENCE: N 54°09'32" E, along and with the east right of way line of said Weiss Lane and a west line of said called 119.023 acre tract, a distance of 830.50 feet to the POINT OF BEGINNING and containing 2.150 acres in the Extra Territorial Jurisdiction (ETJ) of Pflugerville, Travis County, Texas. Said tract being described in accordance with an exhibit prepared under Job No. 50703-50 by Pape Dawson Engineers, Inc.

PREPARED BY: Pape-Dawson Engineers, Inc.
DATE: May 10, 2013
REVISED: May 22, 2013
JOB No.: 50703-50
DOC.ID.: H:\AUSTIN SURVEY\CIVIL\50703-50\WORD\Annexation Field Notes_Tract 2.docx
TBPE Firm Registration #470
TBPLS Firm Registration #100288-00



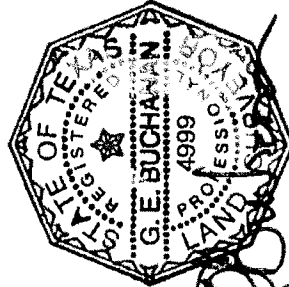


LOCATION MAP

MAPSCO MAP GRID: 439
NOT-TO-SCALE

FIELD NOTES FOR
RIGHT OF WAY ANNEXATION
TRACT 2

A 2.150 ACRE, OR 93,670 SQUARE FEET MORE OR LESS, TRACT OF LAND OUT OF THE REMAINING PORTION OF A CALLED 119.023 ACRE TRACT RECORDED IN DOCUMENT NO. 2012164042 OF THE OFFICIAL PUBLIC RECORDS OF TRAVIS COUNTY, TEXAS, OUT OF THE REMAINING PORTION OF A CALLED 237.56 ACRE TRACT OF LAND RECORDED IN DOCUMENT NO. 2012164042 OF THE OFFICIAL PUBLIC RECORDS OF TRAVIS COUNTY, TEXAS AND A PORTION OF WEISS LANE, A VARIABLE WIDTH RIGHT OF WAY, OUT OF THE JOHN C. BRAY, SURVEY NO. 10, ABSTRACT 73, IN THE CITY OF PFLUGERVILLE, TRAVIS COUNTY, TEXAS.



PAPE-DAWSON ENGINEERS

7800 SPICAL CREEK BLVD. | AUSTIN TEXAS 78757 | PHONE: 512.654.8711
SUITE 220 WEST | FAX: 512.458.9887
TEXAS BOARD OF PROFESSIONAL ENGINEERS, FIRM REGISTRATION # 430
TEXAS BOARD OF PROFESSIONAL LAND SURVEYORS, FIRM REGISTRATION # 100
Copyright © 2012 Pape-Dawson Engineers, Inc. All Rights Reserved.

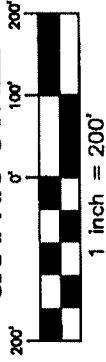
LEGEND:
DR DEED RECORDS OF TRAVIS COUNTY, TEXAS
OPR OFFICIAL PUBLIC RECORDS OF TRAVIS COUNTY, TEXAS
DPR DEED AND PLAT RECORDS OF TRAVIS COUNTY, TEXAS
FIR FOUND 1/2" IRON ROD
⊙ FOUND 1/2" IRON ROD WITH YELLOW CAP "PAPE-DAWSON"

NOTES:

- THE PROFESSIONAL SERVICES PROVIDED HERewith INCLUDE THE PREPARATION OF A FIELD NOTE DESCRIPTION.
- THE BEARINGS ARE BASED ON THE NORTH AMERICAN DATUM OF 1983 (COBS 1996), FROM THE TEXAS COORDINATE SYSTEM ESTABLISHED FOR THE CENTRAL ZONE.
- TCAD PARCEL NO. 706141 AND 271682



GRAPHIC SCALE



LOT 3
LOT 4
FINAL PLAT OF PFLUGERVILLE INDUSTRIAL PARK
DOC No. 200800320 (O.P.R.)
R.O.W. DEDICATION IS OUT OF FINAL PLAT
PFLUGERVILLE INDUSTRIAL PARK
DOC No. 200800320 (O.P.R.)

"TRACT 2"
P.O.B.
FND. 1/2" IRON ROD WITH YELLOW CAP "PAPE-DAWSON"

LINE	BEARING	LENGTH
L1	S40°15'23"E	31.42'
L2	N35°33'54"W	27.41'
L3	S35°35'24"E	27.57'
L4	N35°25'35"W	80.48'
L5	S35°33'54"E	57.79'

TRACT 2
2.150 ACRES
(93,670 SQUARE FEET MORE OR LESS)

JOHN C. BRAY
SURVEY NO. 10
ABSTRACT 73

CITY OF PFLUGERVILLE, TEXAS ETU
REMAINING PORTION OF A CALLED
119.023 AC TRACT
DOC No. 2012164042
(O.P.R.)

WEISS LANE
(A VARIABLE WIDTH RIGHT OF WAY)
N54°09'32"E 830.50'
S54°25'39"W 836.42'

MATCHLINE
SEE PAGE 2 OF 2

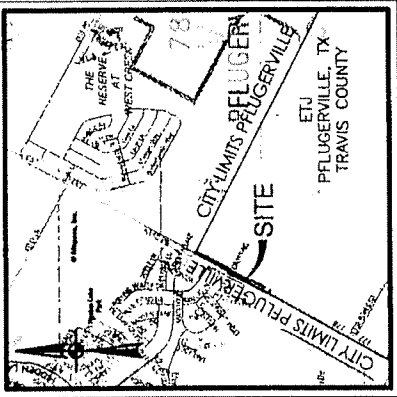
MAY 10, 2013

REVISED: 5/22/13 & 5/23/13

JOB No.:

SHEET 1 OF 2

50703-50



LOCATION MAP

MAPSCO MAP GRID: 439
NOT-TO-SCALE

- LEGEND:**
- DR DEED RECORDS OF TRAVIS COUNTY, TEXAS
 - OPR OFFICIAL PUBLIC RECORDS OF TRAVIS COUNTY, TEXAS
 - DPR DEED AND PLAT RECORDS OF TRAVIS COUNTY, TEXAS
 - FIR FOUND 1/2" IRON ROD
 - YELLOW CAP "PAPE-DAWSON"

LINE	BEARING	LENGTH
L1	S40°15'23"E	31.42'
L2	N35°33'54"W	27.41'
L3	S35°35'24"E	27.57'
L4	N35°25'35"W	80.48'
L5	S35°33'54"E	57.79'

FIELD NOTES FOR

RIGHT OF WAY ANNEXATION

TRACT 2

A 2.150 ACRE, OR 93,670 SQUARE FEET MORE OR LESS, TRACT OF LAND OUT OF THE REMAINING PORTION OF A CALLED 119.023 ACRE TRACT RECORDED IN DOCUMENT NO. 2012164042 OF THE OFFICIAL PUBLIC RECORDS OF TRAVIS COUNTY, TEXAS, OUT OF THE REMAINING PORTION OF A CALLED 237.56 ACRE TRACT OF LAND RECORDED IN DOCUMENT NO. 2012164042 OF THE OFFICIAL PUBLIC RECORDS OF TRAVIS COUNTY, TEXAS AND A PORTION OF WEISS LANE, A VARIABLE WIDTH RIGHT OF WAY, OUT OF THE JOHN C. BRAY, SURVEY NO. 10, ABSTRACT 73 IN THE CITY OF PFLUGERVILLE, TRAVIS COUNTY, TEXAS.

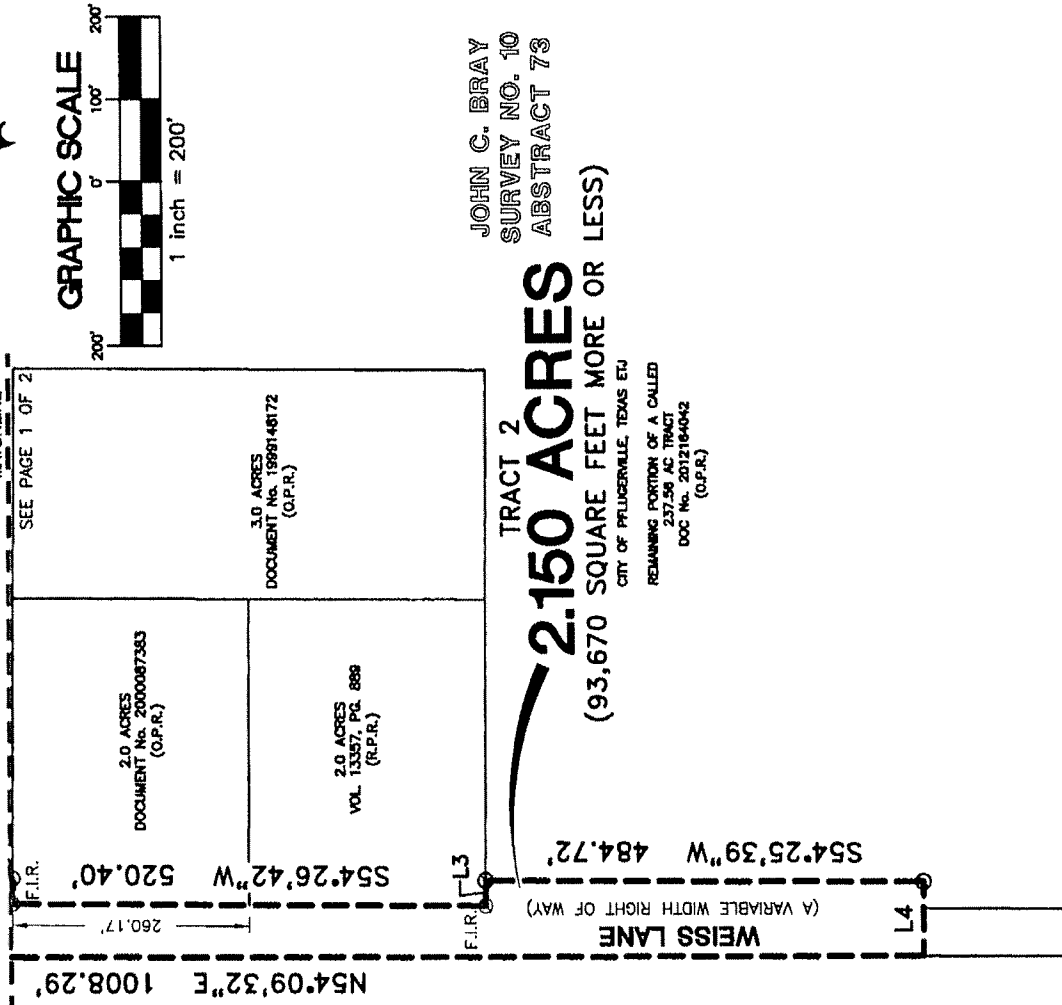


7800 SIGNAL CREEK BLVD | AUSTIN TEXAS 78757 | PHONE: 512-464-9711
SUITE 220 WEST | FAX: 512-459-2887
TRAVIS COUNTY PROFESSIONAL ENGINEERS, NEW REGISTRATION # 170
TRAVIS COUNTY PROFESSIONAL ENGINEERS, NEW REGISTRATION # 170
Copyright © 2012 Pape-Dawson Engineers, Inc. All Rights Reserved.

NOTES:

1. THE PROFESSIONAL SERVICES PROVIDED HEREWITH INCLUDE THE PREPARATION OF A FIELD NOTE DESCRIPTION.
2. THE BEARINGS ARE BASED ON THE NORTH AMERICAN DATUM OF 1983 (NAD 83), FROM THE TEXAS COORDINATE SYSTEM ESTABLISHED FOR THE CENTRAL ZONE.
3. TCAD PARCEL NO. 706141 AND 271682 MATCHLINE

SEE PAGE 1 OF 2



JOHN C. BRAY
SURVEY NO. 10
ABSTRACT 73

TRACT 2
2.150 ACRES
(93,670 SQUARE FEET MORE OR LESS)

CITY OF PFLUGERVILLE, TEXAS EU
REMAINING PORTION OF A CALLED
237.56 AC TRACT
DOC NO. 2012164042
(G.P.R.)

EXHIBIT A

CERTIFICATE FOR ORDER

THE STATE OF TEXAS §
 §
COUNTY OF TRAVIS §

The undersigned officer of the Board of Directors of Travis County Municipal Utility District No. 17 hereby certifies as follows:

1. The Board of Directors of Travis County Municipal Utility District No. 17 convened in a special meeting on the June 13, 2013, at the offices of Armbrust & Brown, PLLC, 100 Congress Avenue, Suite 1300, Austin, Texas, and the roll was called of the duly constituted officers and members of the Board, to wit:

- | | | |
|-----------------|---|---------------------|
| Frank Caldwell | - | President |
| Ronald F. Beyer | - | Vice President |
| Mike Marsh | - | Secretary |
| Barry Clark | - | Assistant Secretary |
| John Lloyd | - | Director |

and all of said Directors were present, except Director _____, thus constituting a quorum. Whereupon, among other business, the following was transacted at the meeting:

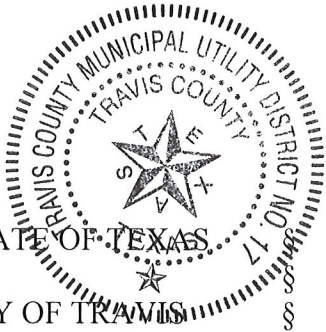
ORDER APPROVING ANNEXATION OF CERTAIN LAND (2.150 ACRES) INTO THE BOUNDARIES OF THE DISTRICT

was introduced for the consideration of the Board. It was then duly moved and seconded that the Order be adopted, and, after due discussion, the motion, carrying with it the adoption of the Order, prevailed and carried by majority of the Board.

2. A true, full and correct copy of the Order adopted at the meeting described in the above paragraph is attached to this certificate; the Order has been duly recorded in the Board's minutes of the meeting; the persons named in the above and foregoing paragraph are the duly chosen, qualified and acting officers and members of the Board as indicated therein, each of the officers and members of the Board was duly and sufficiently notified officially and personally, in advance, of the time, place and purpose of the aforesaid meeting, and that the Order would be introduced and considered for adoption at the meeting, and each of the officers and members consented, in advance, to the holding of the meeting for such purpose; the meeting was open to the public as required by law; and public notice of the time, place and subject to the meeting was given as required by Chapter 551 of the Government Code.

SIGNED AND SEALED this 13th day of June, 2013.

(SEAL)



THE STATE OF TEXAS
COUNTY OF TRAVIS

A handwritten signature in blue ink that reads "Mike Marsh".

Mike Marsh, Secretary
Board of Directors

This instrument was acknowledged before me on June 13, 2013, by Mike Marsh, Secretary of the Board of Directors of Travis County Municipal Utility District No. 17 on behalf of said District.

(Seal)



A handwritten signature in black ink, appearing to read "Sharlene N Collins".

Notary Public Signature