



ROW1 S 10TH ST
(MOUNTAIN VIEW DR TO SETTLERS VALLEY DR)

0.4 ACRES



ROW2 AW GRIMES BLVD

1.2 ACRES



ROW3 BALATON BLVD
(EAST OF COLORADO SAND DR)

2.7 ACRES



ROW3 BALATON BLVD
(WEST OF COLORADO SAND DR)

3.5 ACRES



ROW4 BECKER FARM RD

0.7 ACRES



ROW5

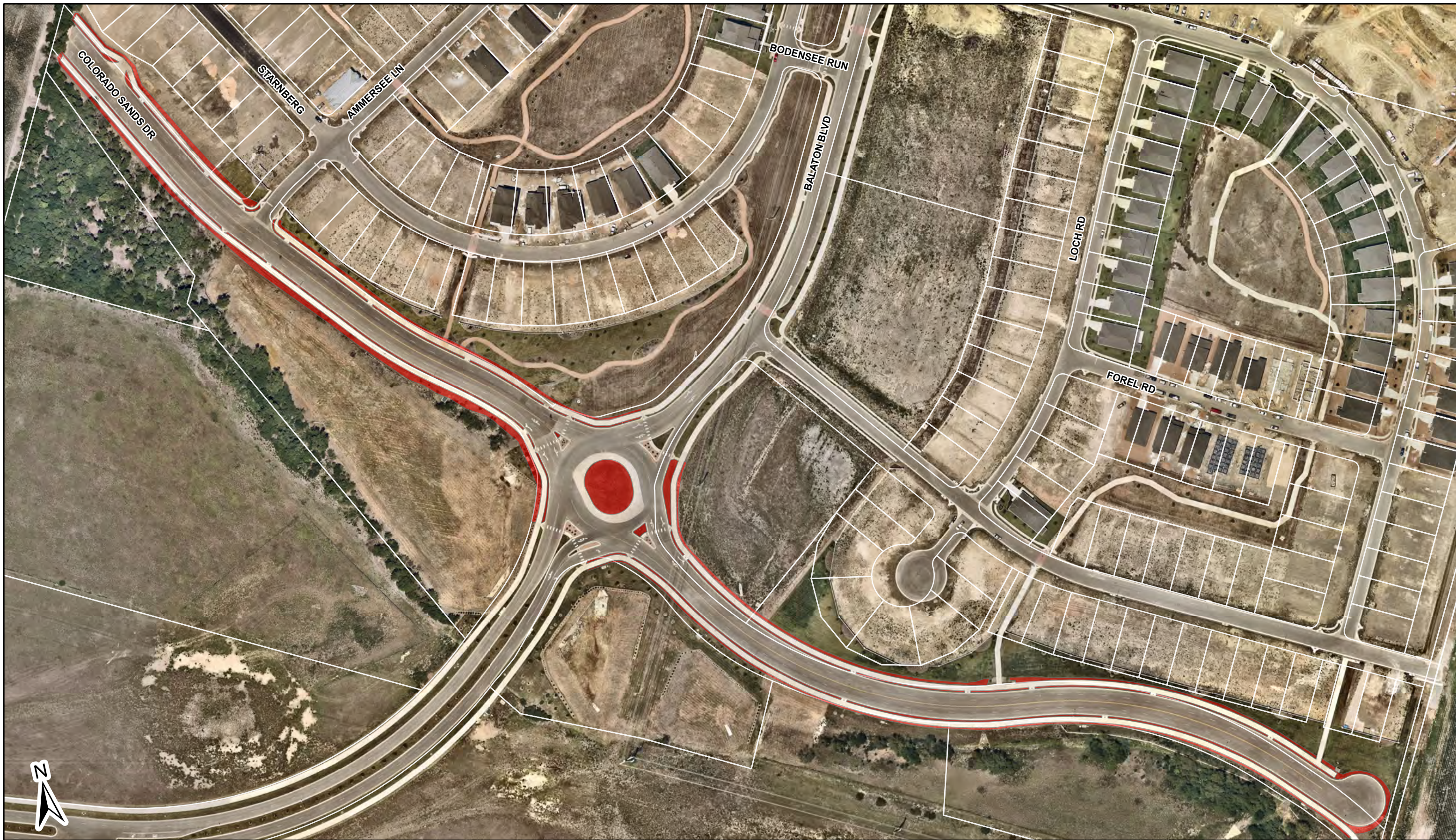
BILTMORE AVE, HELIOS WAY, AND SUN LIGHT NEAR WAY

6.0 ACRES



ROW6 BLACK LOCUST DR

0.8 ACRES



ROW7 COLORADO SAND DR
(AT BALATON BLVD)

1.9 ACRES



ROW7 COLORADO SAND DR
(COPPER MINE DR & AUTUMN SLATE DR)

1.5 ACRES



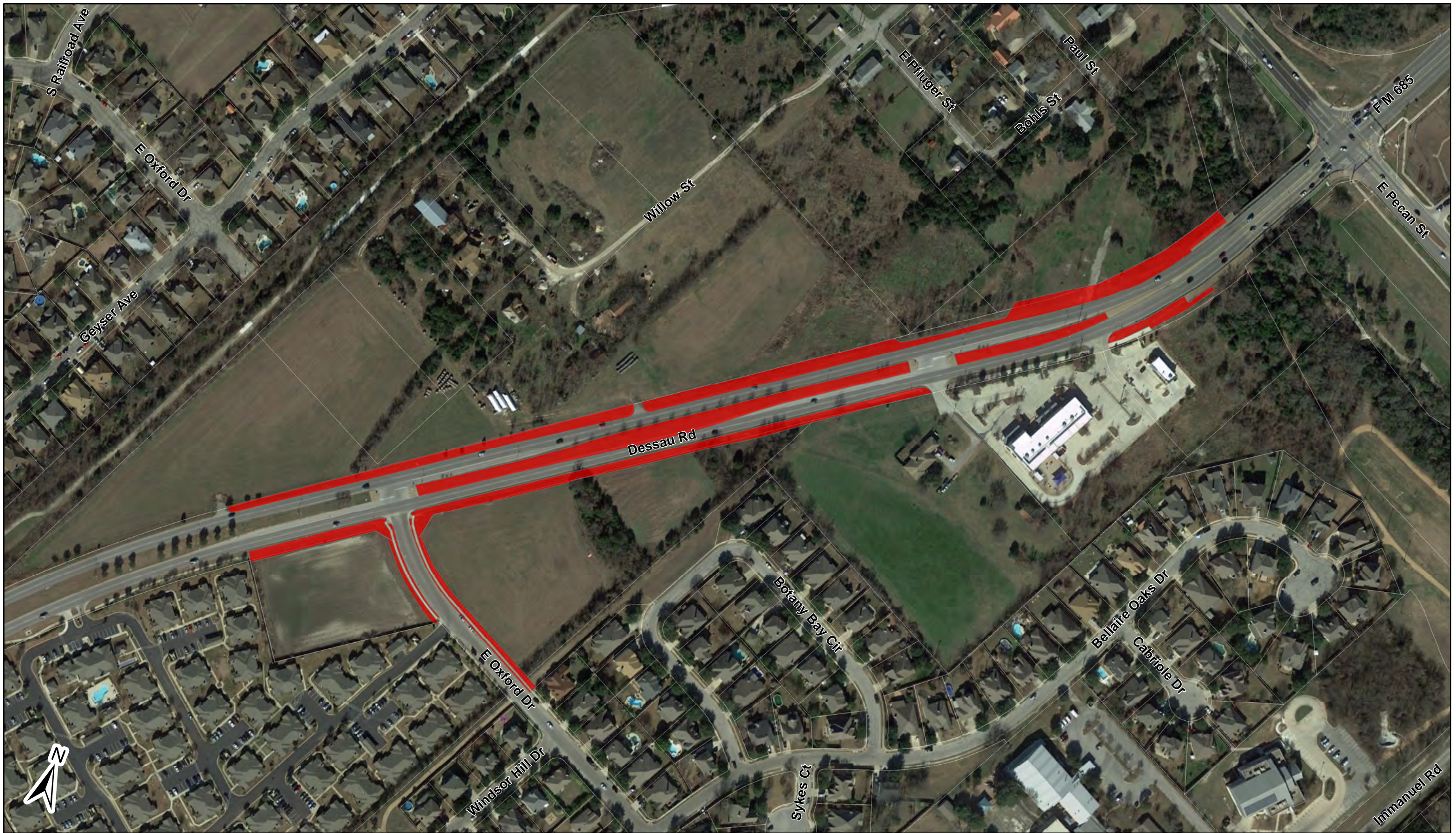
ROW 7 COLORADO SAND DR
(SOUTH OF COPPER MINE DR)

3.4 ACRES



ROW8 DESSAU RD
(E OXFORD DR TO ST CROIX LN)

6.7 ACRES



ROW8 DESSAU RD
(E PECAN ST TO E OXFORD DR)

3.8 ACRES



ROW9 **E PECAN ST**
(FM 685 TO N RAILROAD AVE)

2.7 ACRES



ROW9 **E PECAN ST**
(FM 685 TO N RAILROAD AVE)

2.6 ACRES



ROW9 **E PECAN ST**
(FM 685 TO PLUMBAGO DR)

5.1 ACRES



ROW9

E PECAN ST

2.8 ACRES



ROW9 E PECAN ST
(FM 685 TO N RAILROAD AVE)

1.5 ACRES



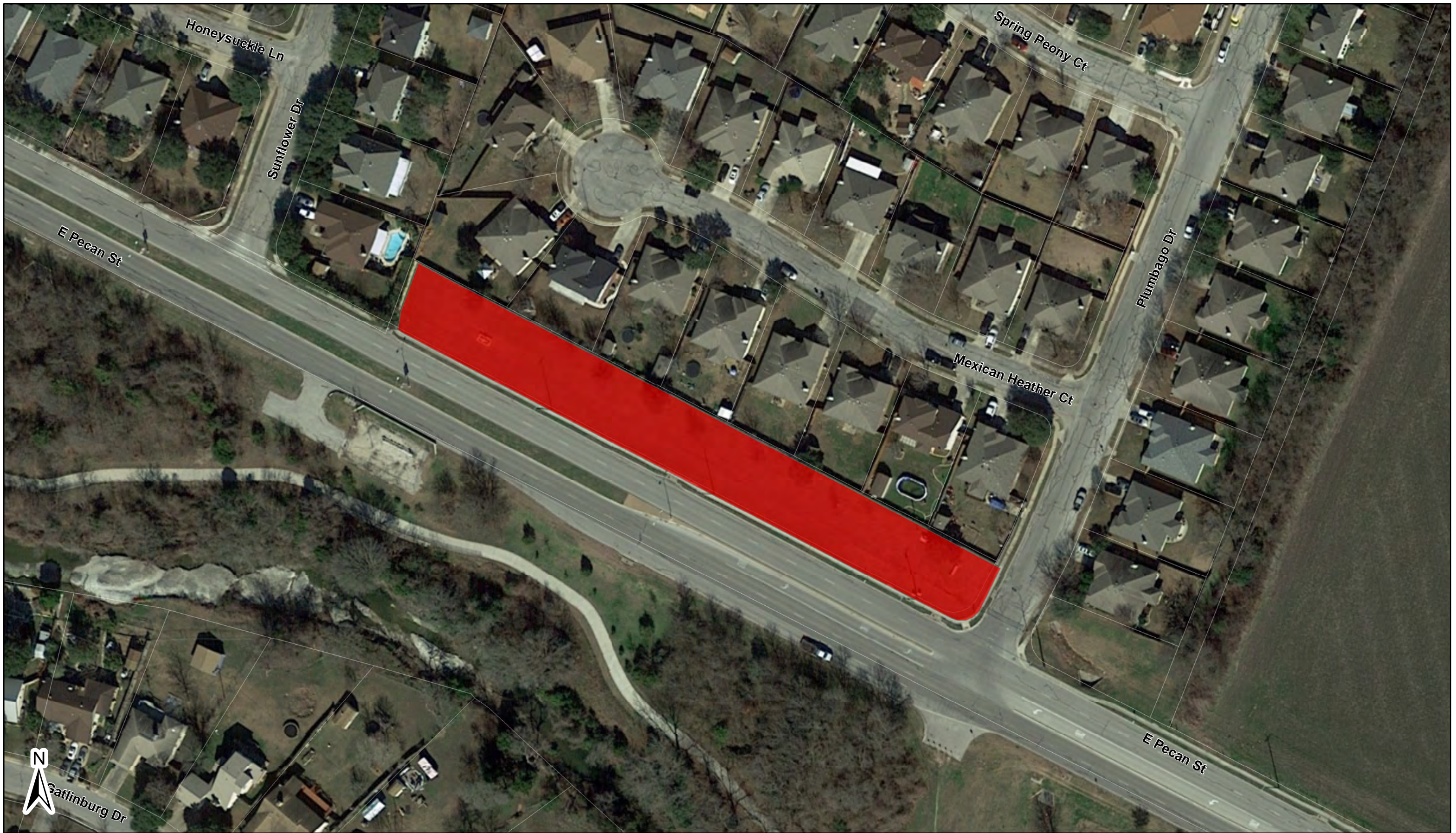
Plumbago Dr

E Pecan St



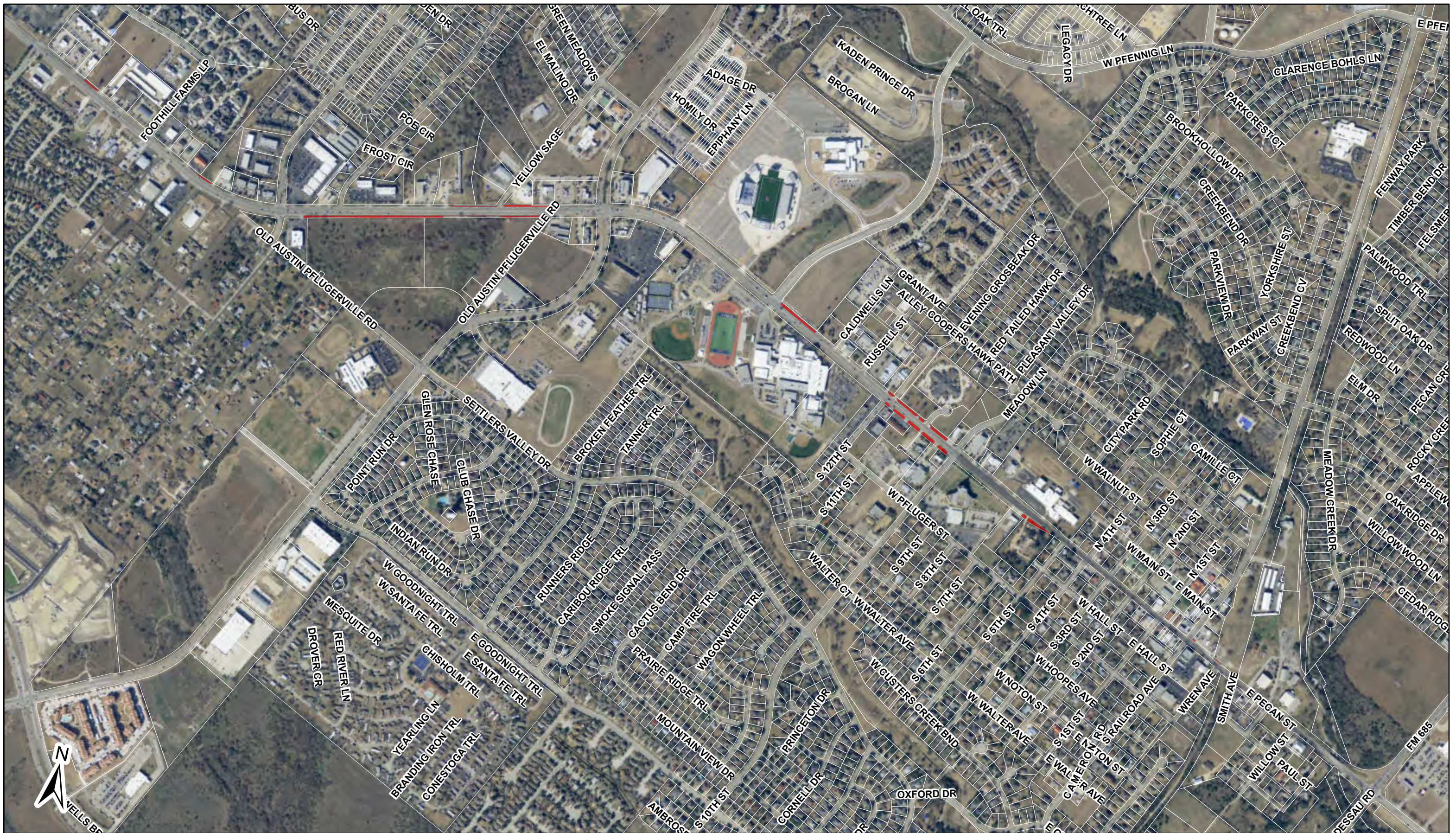
ROW9 E PECAN ST
(AT PLUMBAGO DR)

0.2 ACRES



ROW9 E PECAN ST
(SUNFLOWER DR TO PLUMBAGO DR)

0.9 ACRES



ROW9 W PECAN ST

2.4 ACRES



ROW10 E PFLUGERVILLE PKWY
(FM 685 TO COLORADO SAND DR)

3.9 ACRES



ROW10 E PFLUGERVILLE PKWY
(FM 685 TO PFLUGER FARM LN)

2.5 ACRES



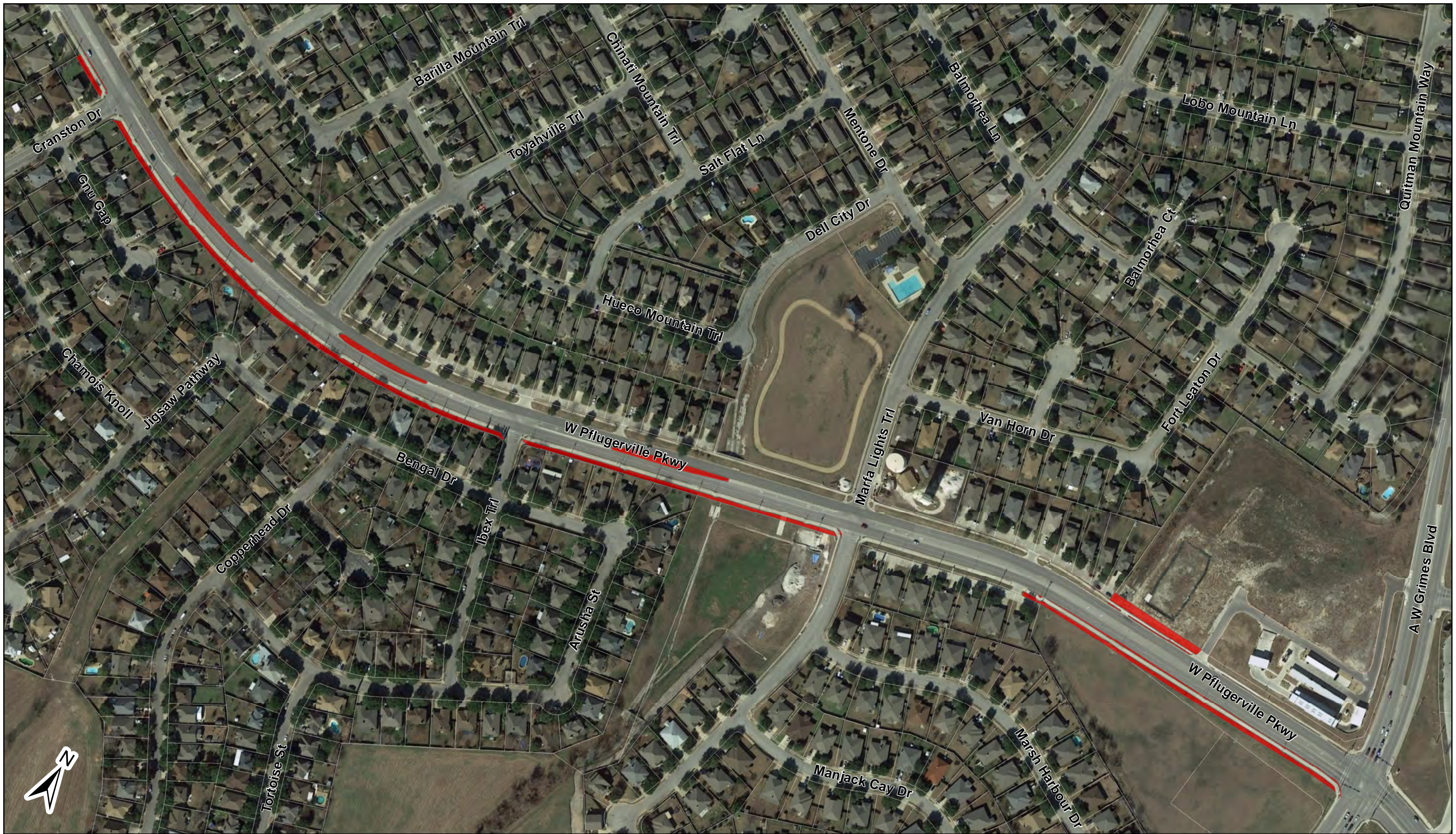
ROW10 **E PFLUGERVILLE PKWY**
(GREAT BASIN AVE TO N HEATHERWILDE BLVD)

1.9 ACRES



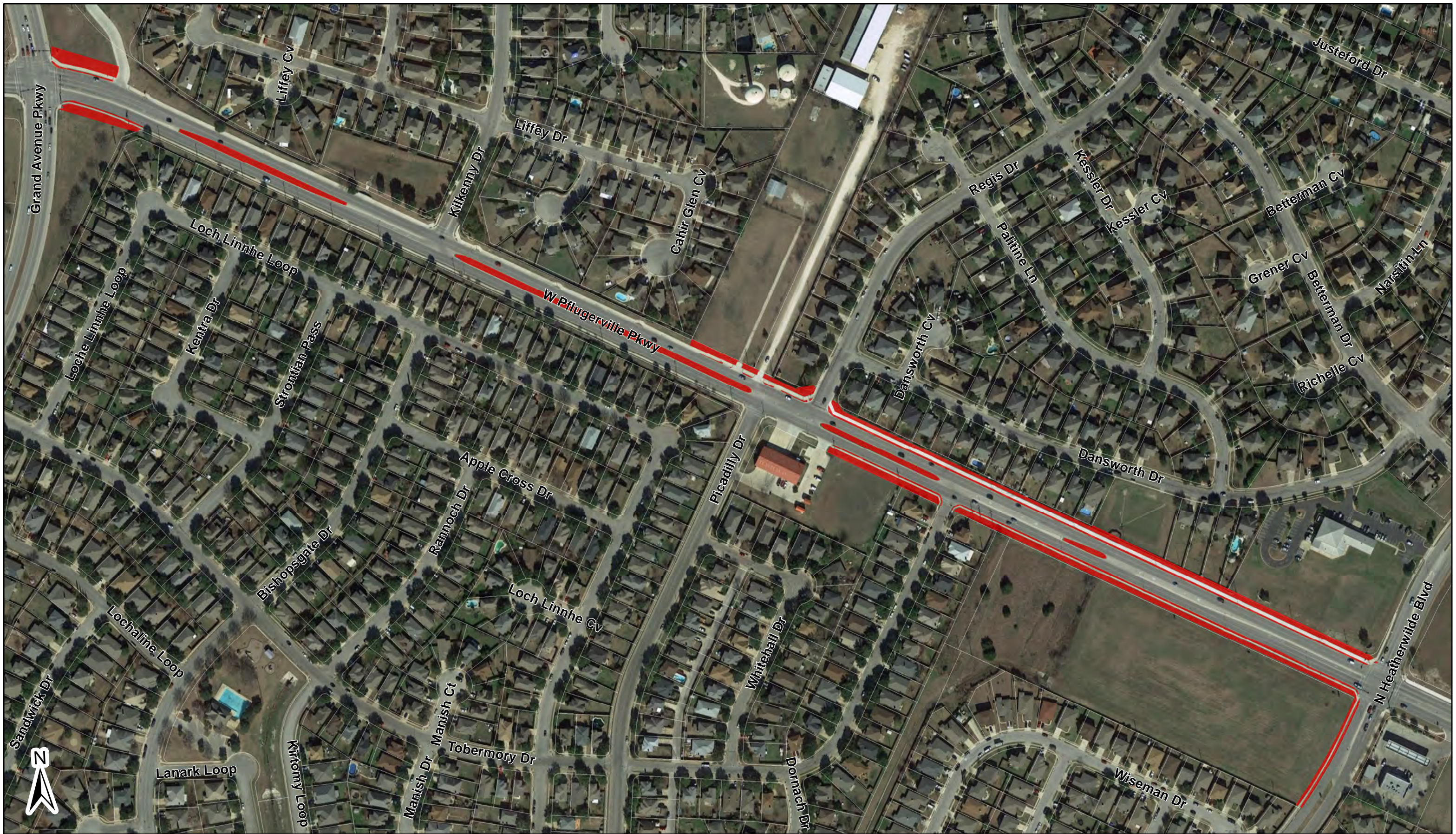
ROW10 E PFLUGERVILLE PKWY
(PFLUGER FARM LN TO GREAT BASIN AVE)

1.7 ACRES



**ROW10 W PFLUGERVILLE PKWY
(GRAND AVENUE PKWY TO CRANSTON DR)**

1.5 ACRES



**ROW10 W PFLUGERVILLE PKWY
(N HEATHERWILDE BLVD TO GRAND AVENUE PKWY)**

2.6 ACRES



ROW10 W PFLUGERVILLE PKWY
(ZOLA LN TO CITY LIMITS)

0.3 ACRES



PFLUGERVILLE PKWY

ROW10 6.0 ACRES



ROW11 E PFENNIG LN
(AT E PECAN ST)

0.7 ACRES



ROW11 W PFENNIG LN
(E BLACK LOCUST DR TO JULIE'S WALK)

0.7 ACRES



ROW11 E PFENNIG LN

2.2 ACRES



ROW 11 **W PFENNIG LN**
(LAURELLEAF DR TO E BLACK LOCUST DR)

1.2 ACRES



ROW12

FM 685
(E PFLUGERVILLE PKWY TO SH 130)

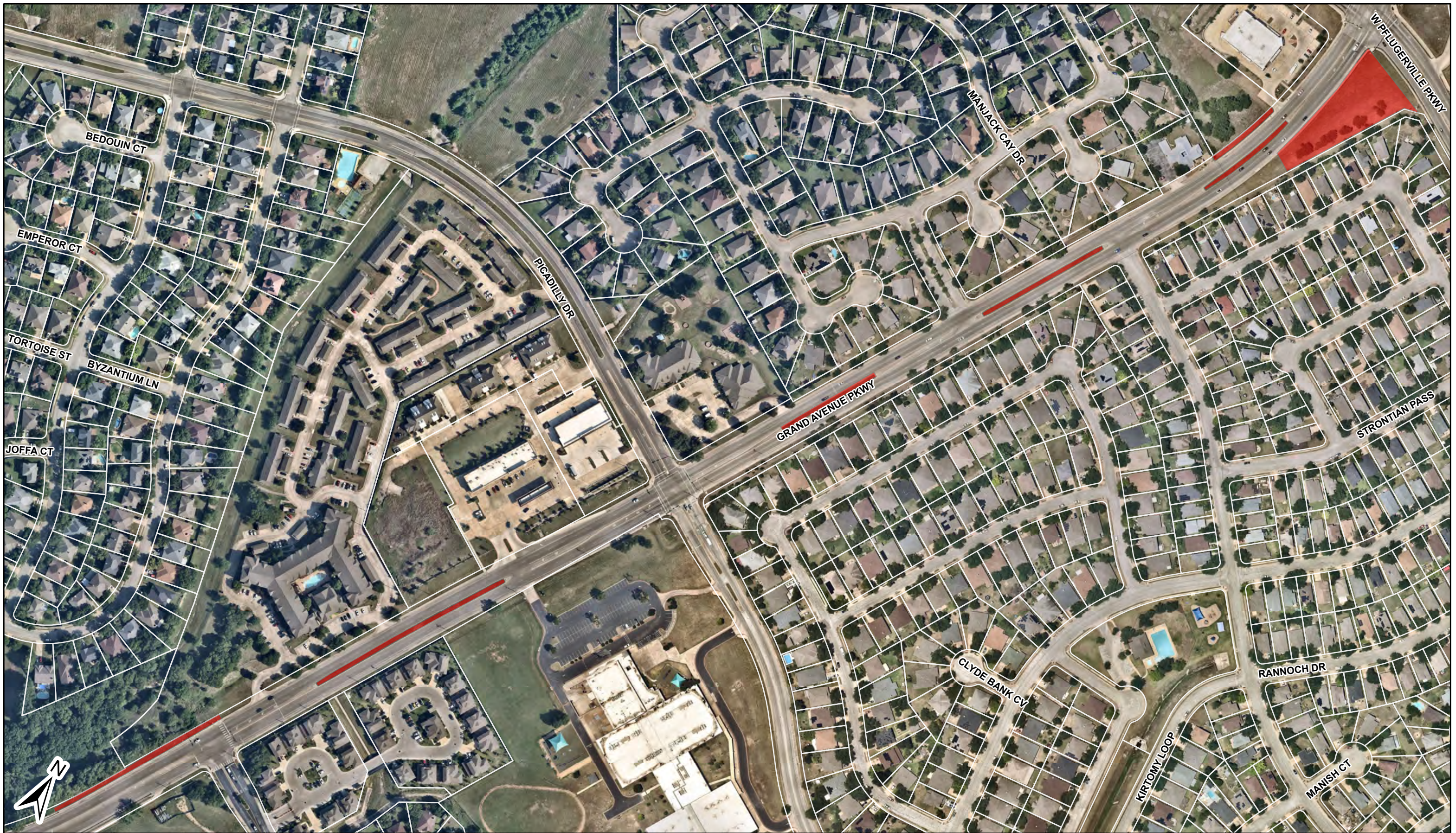
2.1 ACRES



ROW12

FM 685
(E PFENNIG LN TO E PECAN ST)

1.4 ACRES



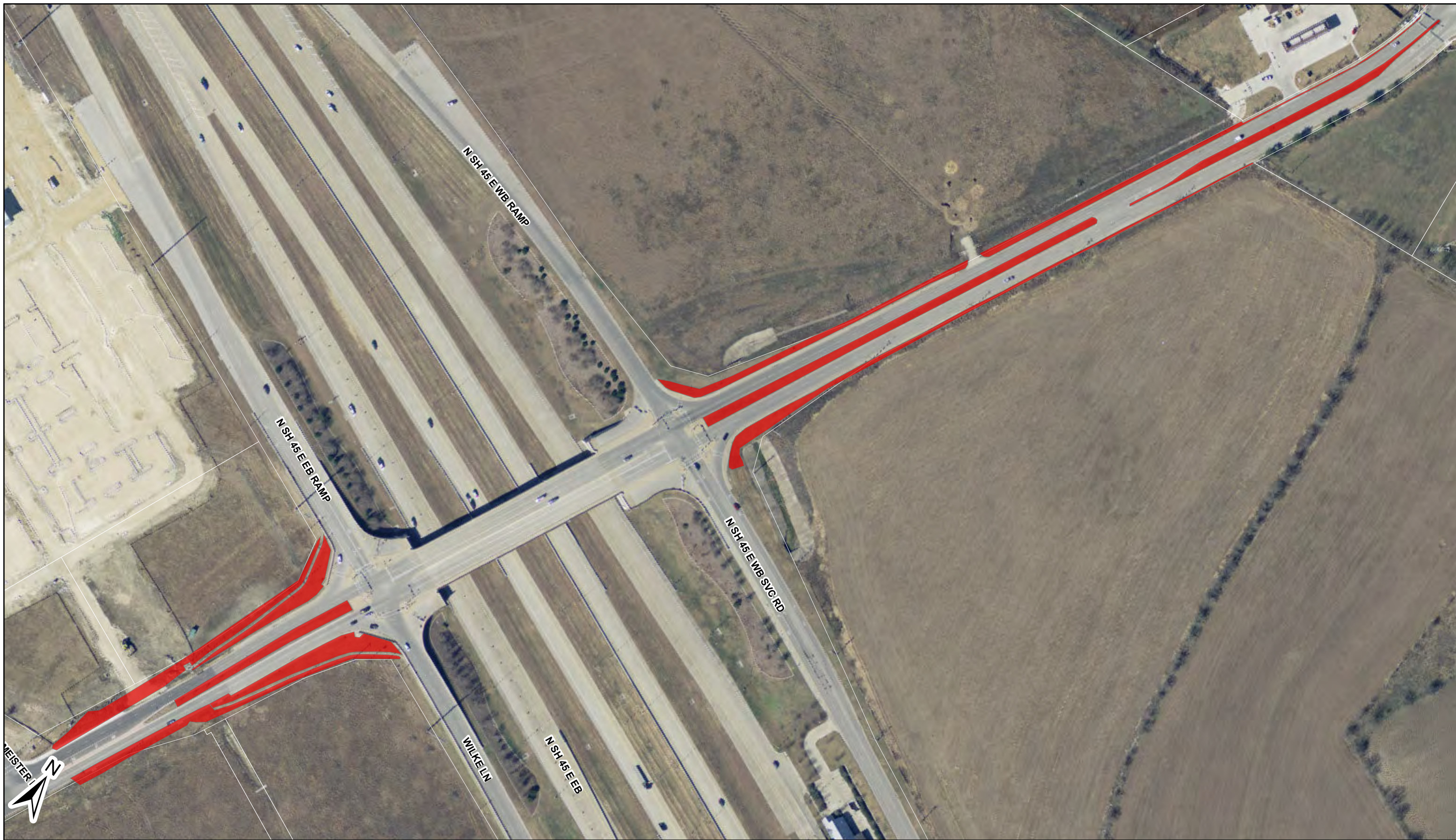
ROW13 GRAND AVENUE PKWY
(BLACK LOCUS DR TO PFLUGERVILLE PKWY)

1.7 ACRES



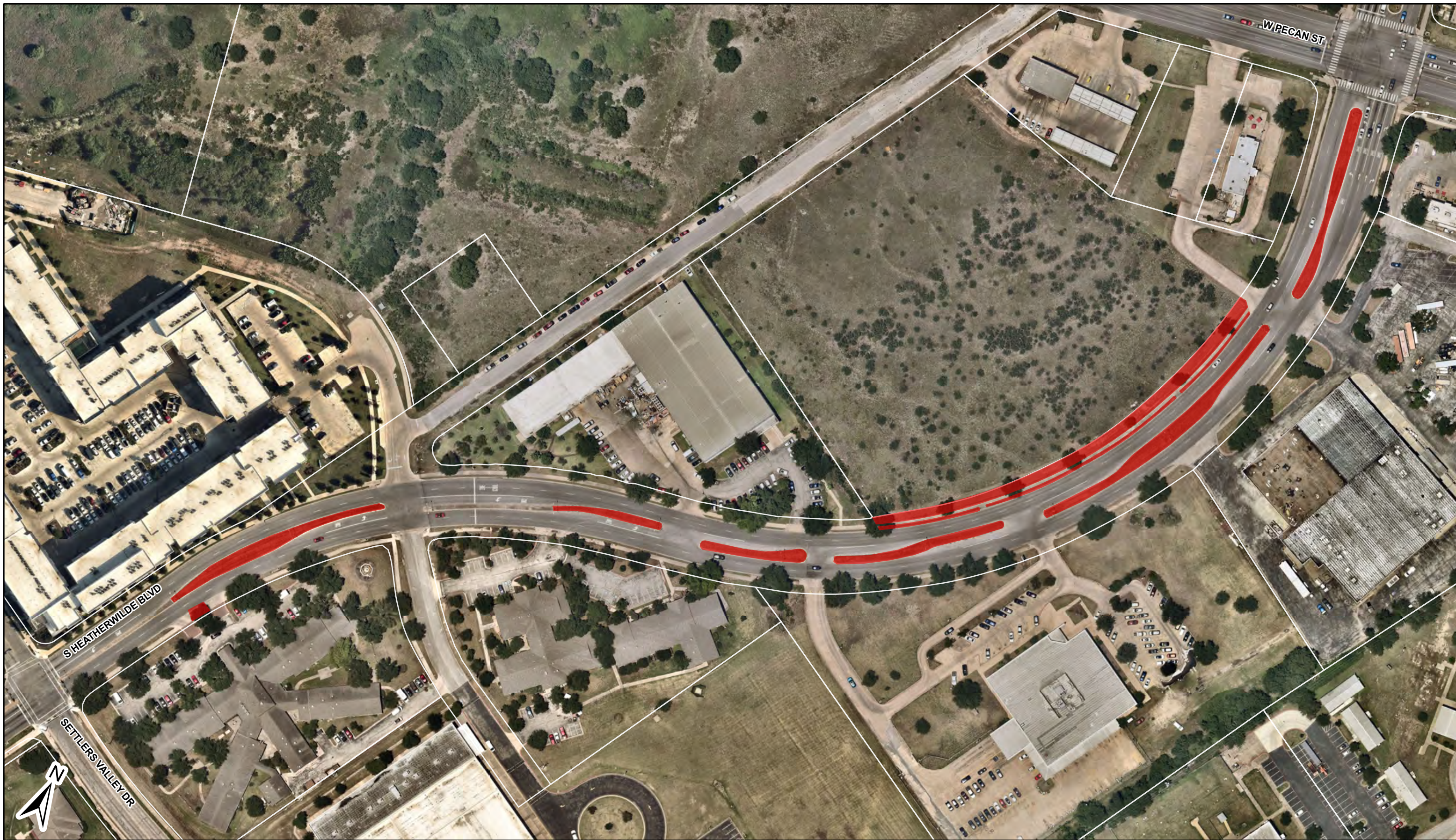
ROW13 GRAND AVENUE PKWY
(PFENNIG LN TO SH 130)

1.5 ACRES



ROW14 HEATHERWILDE BLVD
(NEW MEISTER LN TO CHEYENNE VALLEY DR)

2.9 ACRES



ROW14 **HEATHERWILDE BLVD**
(SETTLERS VALLEY DR TO W PECAN ST)

0.8 ACRES



ROW14

**HEATHERWILDE BLVD
(W PECAN ST TO W PFENNIG LN)**

1.2 ACRES



ROW 14 HEATHERWILDE BLVD
(WELLS BRANCH PKWY TO SETTLERS VALLEY DR)

1.6 ACRES



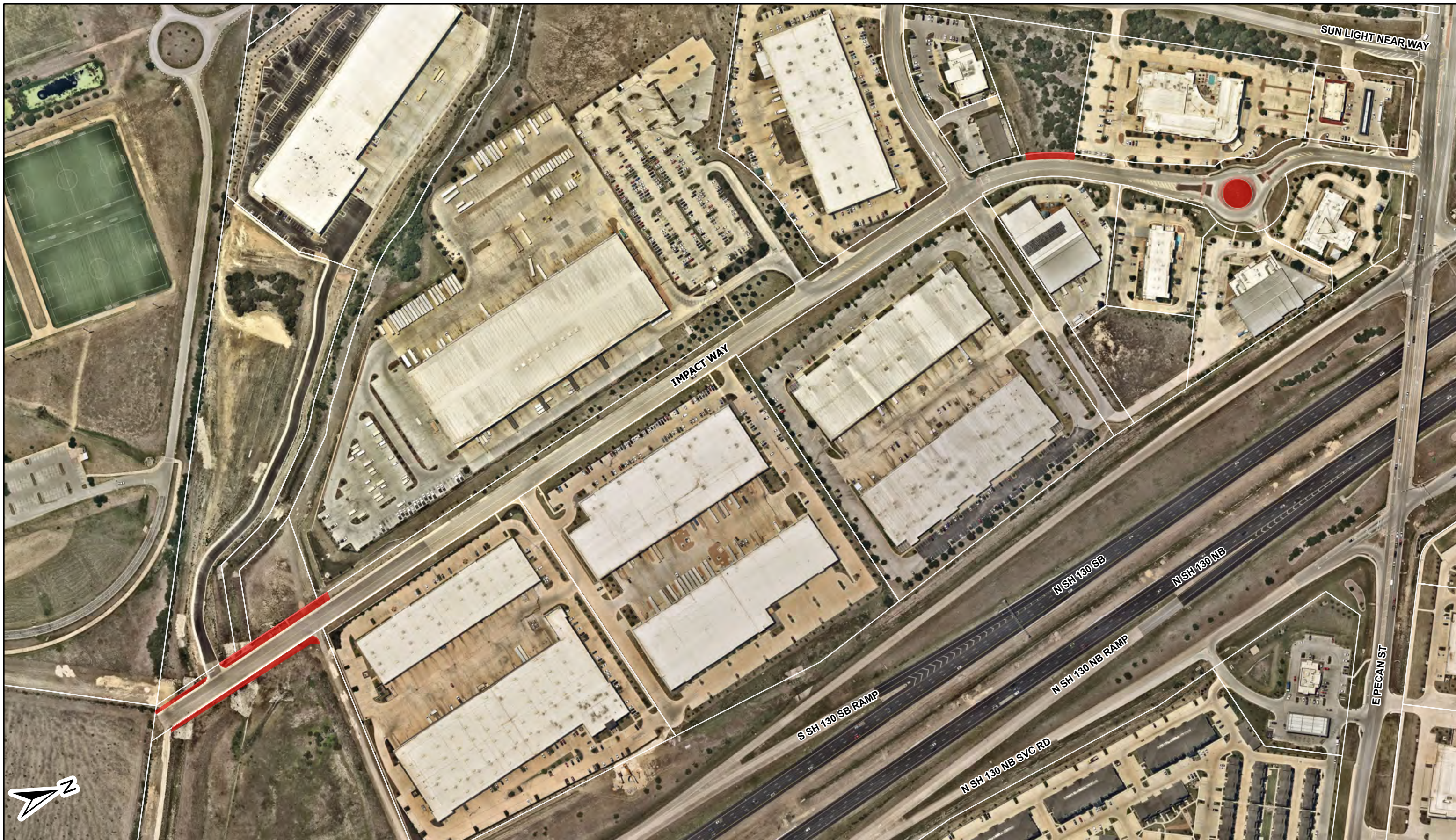
ROW14 HEATHERWILDE BLVD
(WORLEY DR TO NEW MEISTER LN)

4.0 ACRES



ROW15 IMMANUEL RD

2.5 ACRES



ROW16 IMPACT WAY

0.5 ACRES



**ROW17 KELLY LN
(AT COLORADO SAND DR)**

0.3 ACRES



ROW17 KELLY LN
(FALCON POINTE BLVD TO HIDDEN LAKE DR)

2.1 ACRES



ROW17 KELLY LN

1.2 ACRES



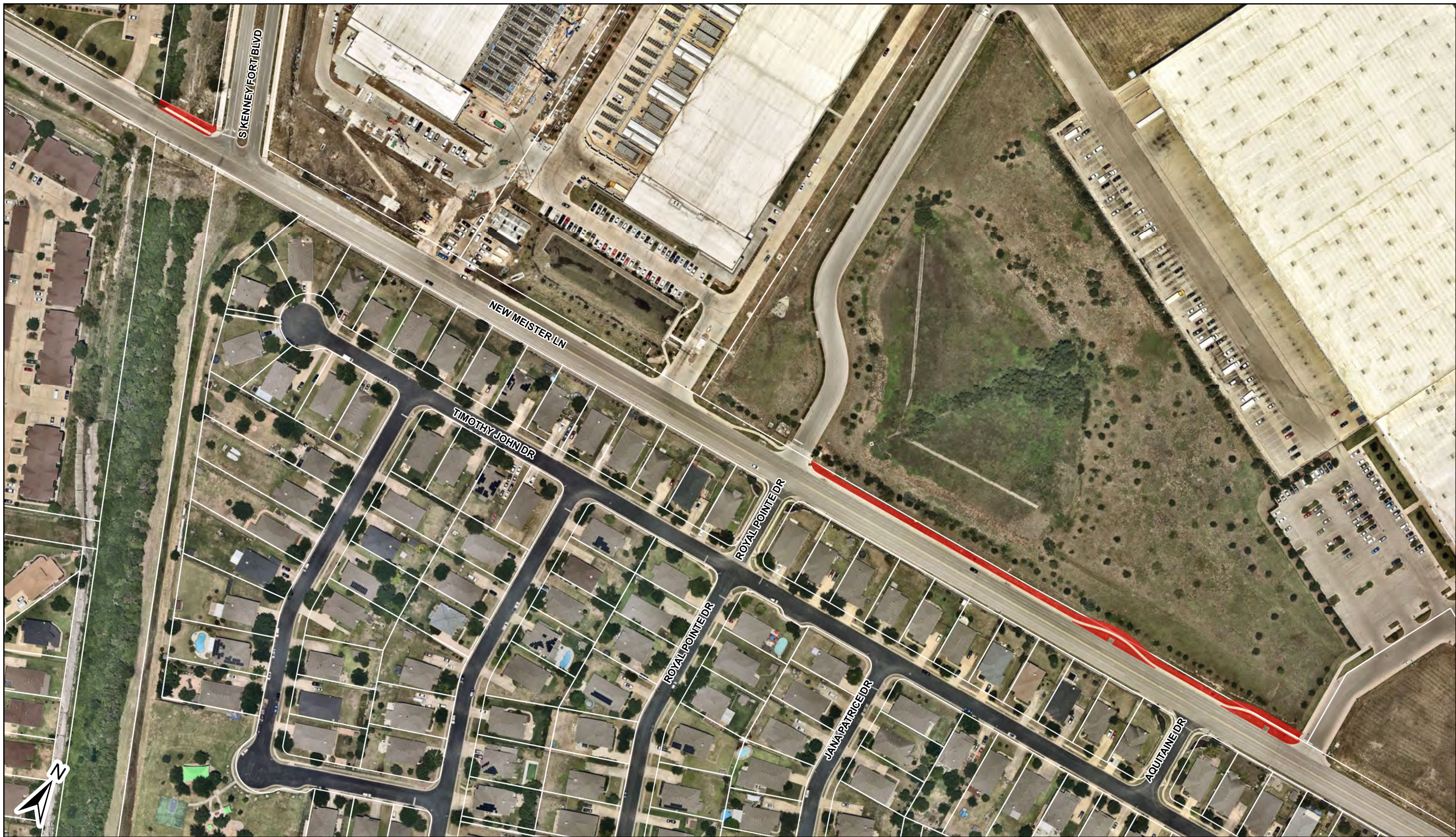
ROW18 MEADOW LN

0.3 ACRES



**ROW19 N RAILROAD AVE
(E PFLUGERVILLE PKWY TO E PFENNIG LN)**

3.7 ACRES



ROW20 NEW MEISTER LN

0.3 ACRES



ROW21 Old Austin-Hutto Rd.

0.6 ACRES



ROW22 PFLUGER FARM LN

2.3 ACRES



ROW23 PFLUGERVILLE LP

1.2 ACRES



ROW24 PICADILLY DR
(CENTRAL COMMERCE DR TO JERUSALEM DR)

0.7 ACRES



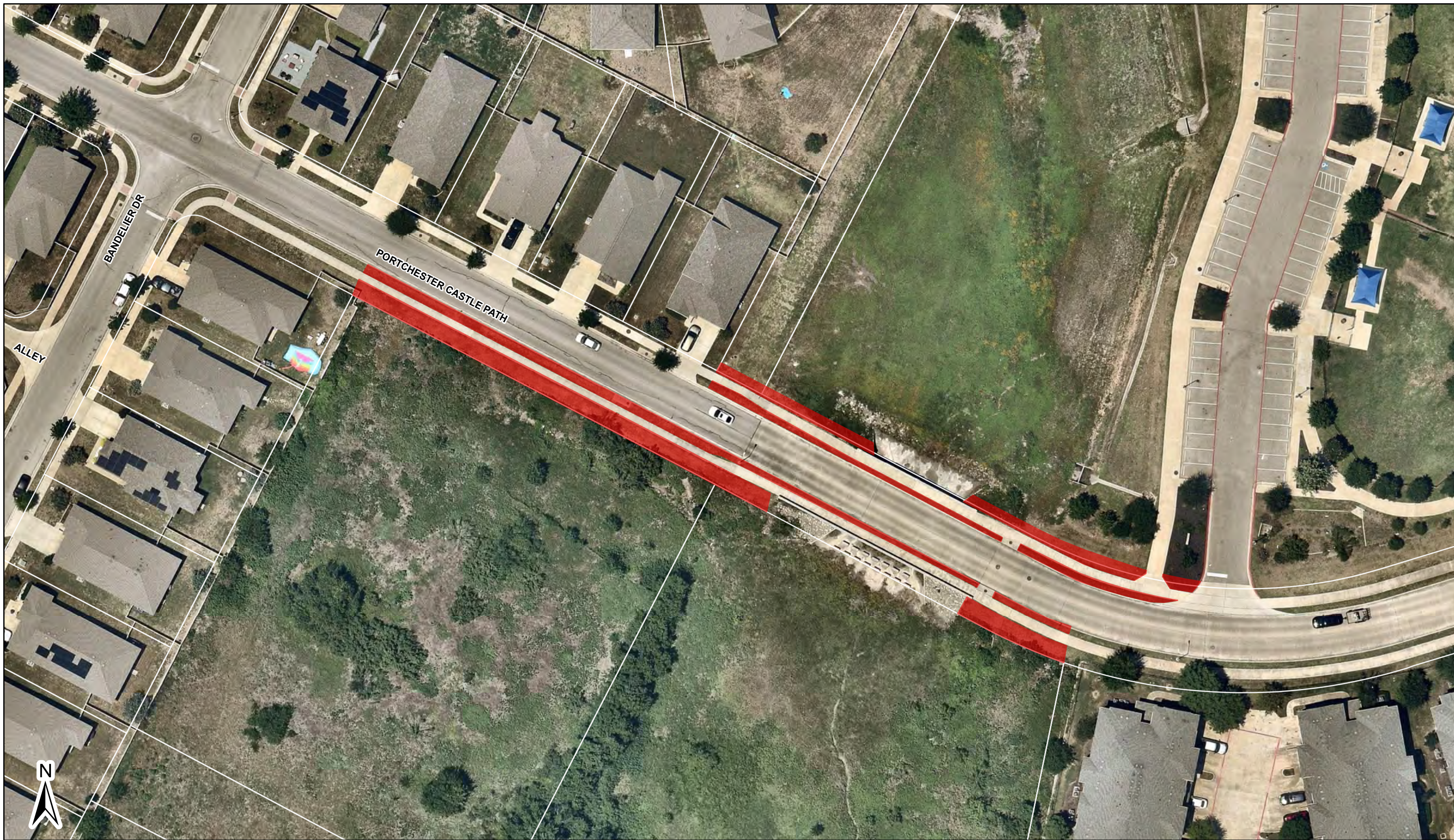
ROW24 PICADILLY DR
(CENTRAL COMMERCE DR TO JERUSALEM DR)

0.7 ACRES



ROW24 PICADILLY DR

0.9 ACRES

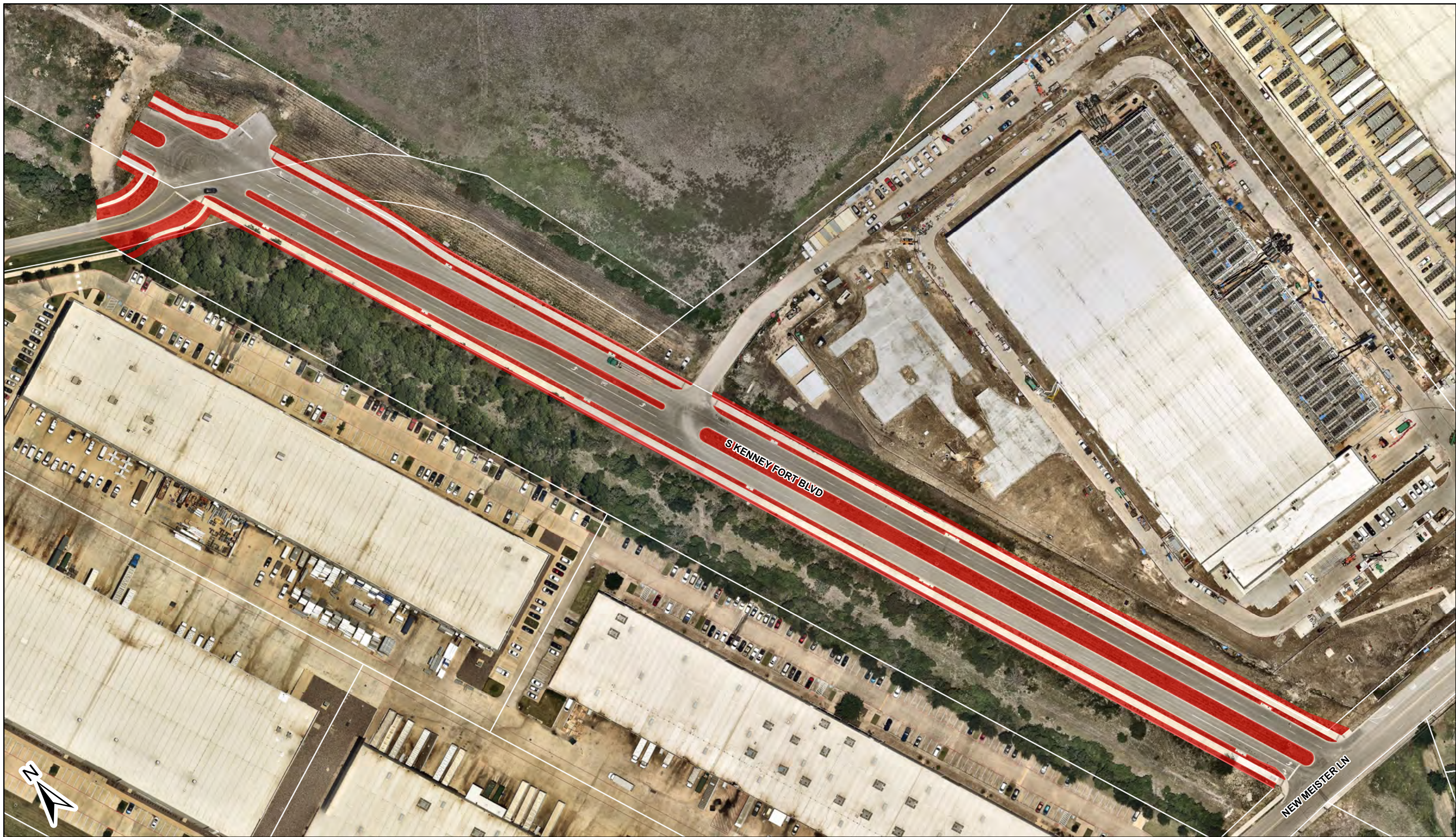


ROW25 PORTCHESTER CASTLE PATH 0.2 ACRES



ROW26 ROWE LN

0.9 ACRES



ROW27 S KENNEY FORT BLVD

1.3 ACRES



ROW28 SCHULTZ LN

2.5 ACRES



ROW29

SWENSON FARMS BLVD

0.8 ACRES



WEISS LN
(NORTH OF LAKE PFLUGERVILLE)

ROW30 2.9 ACRES



WEISS LN
(SOUTH OF LAKE PFLUGERVILLE)

ROW30 8.0 ACRES



ROW31 WELLS BRANCH PKWY
(EAST OF DESSAU RD)

6.3 ACRES



ROW31 WELLS BRANCH PKWY
(WEST OF DESSAU RD)

3.8 ACRES



ROW32 WILKE RIDGE LN

2.4 ACRES



ROW33 **YELLOW SAGE**
(INCLUDES GREEN MEADOWS LN)

0.5 ACRES