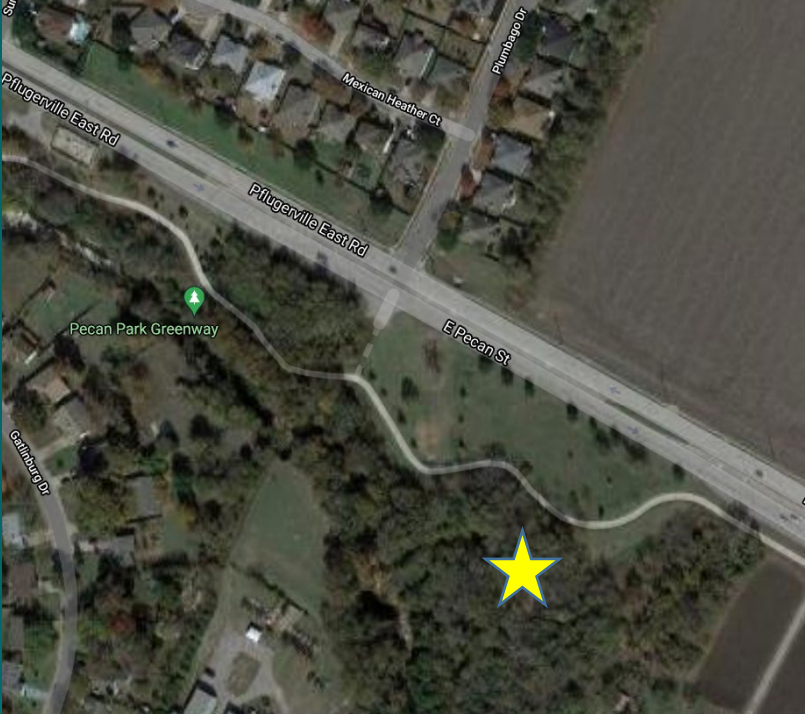


2021-0436

Discussion regarding the BMX track on City property located southeast of E Pecan Street and Plumbego Drive and legally described as LOT 2 BLK A GILLELAND PLAZA, ABSTRACT S05010.



BMX Trail Location & Images





Tejano BMX Trails:
Hand built and maintained
by volunteers.
Ride at own risk.
Safety equipment recommended.
Trails closed when wet.
Jumps are tarped to control erosion.
Please:
No litter.
Do not ride in the mud.
No motorized vehicles.
Dogs must be leashed.
Ride, respect and enjoy.

WARNING
TEXAS LAW (CHAPTER 75, CIVIL PRACTICE
AND REMEDIES CODE)
LIMITS THE
LIABILITY OF A GOVERNMENTAL UNIT
FOR THE DAMAGES ARISING DIRECTLY FROM
BICYCLING, IN-LINE HOCKEY, SKATING,
ROLLER-SKATING,
SKATEBOARDING, ROLLER-BLADING, OR
SOAP BOX DERBY USE.
ON PREMISES THAT THE GOVERNMENTAL UNIT OWNS,
OPERATES, FOR THAT PURPOSE.

TEJANO **BMX** TRAILS

Volunteer Built & Maintained

[About](#) ▾

[Safety](#)

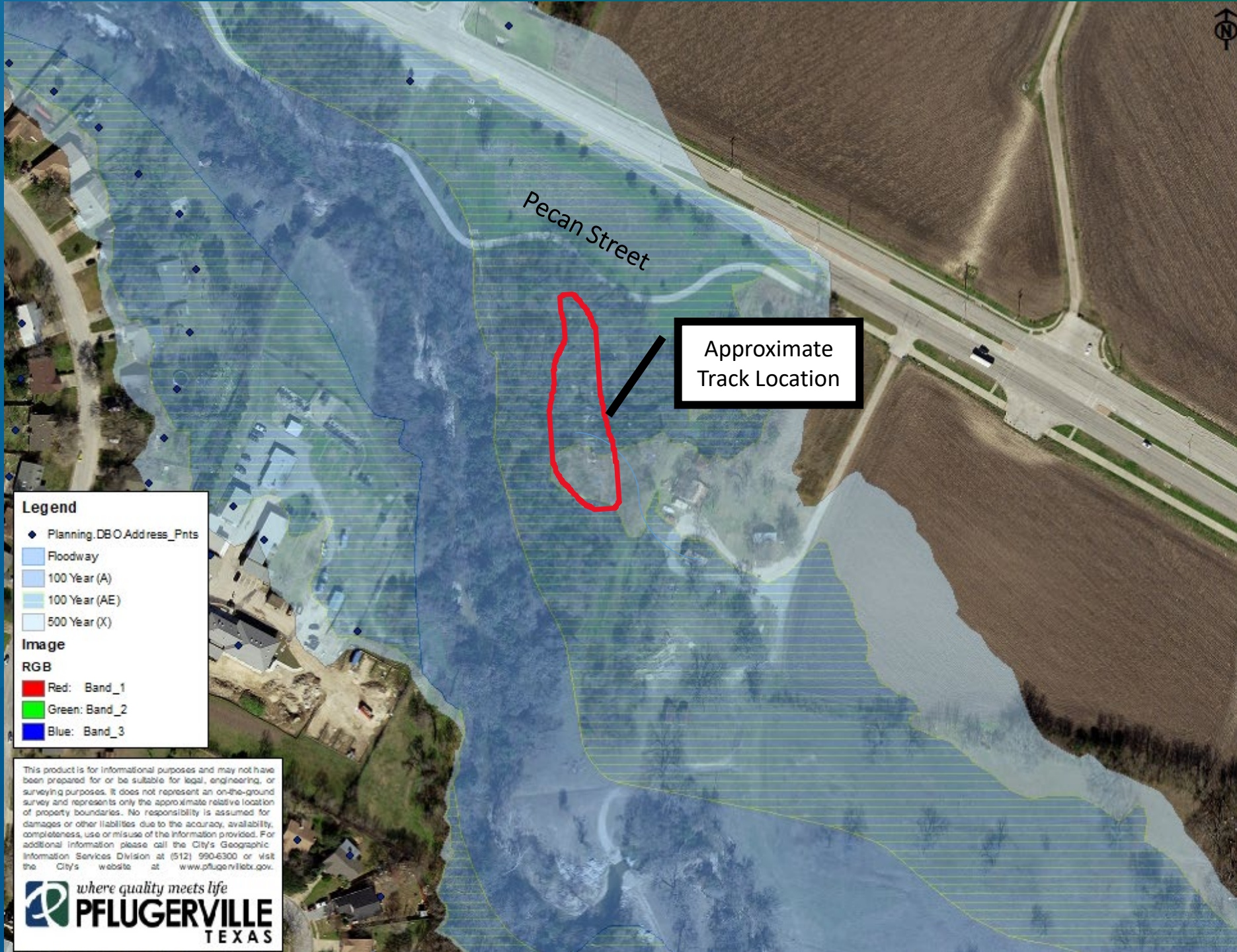
[Contact](#)



Challenges & Solutions

Challenge	Solution
Fire Hazards	Resolved. Fire pit and gas-powered pumps removed by Tejano BMX Trails (TBT) volunteer organization.
Non-permitted creek water use	TBT no longer pumping creek water. Need to identify alternate water source.
Platform not built to code	Remove and build to code with City oversight/approval.
911 Response	Sign visible from the street and address assigned to the location.
Large Events	Public Safety Plans submitted to Fire Marshal prior to large events.
ADA concerns	TBD
Potential personal injury liability	Broad liability coverage in City parkland under TML, <i>provided City is properly maintaining all improvements.</i>
Development within Floodplain	Follow processes to ensure Compliance with applicable Federal, State & Local regulations for development within Zone AE 100 Year Floodplain





Pecan Street

Approximate
Track Location

Legend

- ◆ Planning.DBOAddress_Pnts
- Floodway
- 100 Year (A)
- 100 Year (AE)
- 500 Year (X)

Image

RGB

- Red: Band_1
- Green: Band_2
- Blue: Band_3

This product is for informational purposes and may not have been prepared for or be suitable for legal, engineering, or surveying purposes. It does not represent an on-the-ground survey and represents only the approximate relative location of property boundaries. No responsibility is assumed for damages or other liabilities due to the accuracy, availability, completeness, use or misuse of the information provided. For additional information please call the City's Geographic Information Services Division at (512) 990-6300 or visit the City's website at www.pflugerville.gov.





2021-0436

Recommended Action

Direct staff to work with the Tejano BMX Trails volunteer organization to develop a plan for the BMX trails on City parkland for Council consideration, ensuring compliance with all applicable federal, state & local laws and regulations, and to continue to allow public use of the BMX trails pending plan development, provided all improvements, equipment and materials are removed from the site with the exception of the dirt ramps.

