

Page Southerland Page, Inc.  
1800 Main Street Suite 123  
Dallas, TX 75201  
page@pspi.com  
Tel: 214-522-3900  
Fax: 214-522-4390

ARCHITECTURE (ENGINEERING) INTERIORS PLANNING CONSULTING  
Austin / Dallas / Denver / Houston / San Francisco / Washington DC / International Affiliate Offices

**CIVIL**  
PAGE  
400 W. Cesar Chavez Street  
Suite 500  
Austin, Texas 78701  
512-472-6721

**STRUCTURAL**  
PAGE  
1800 Main Street  
Suite 123  
Dallas, Texas 75201  
214-522-3900

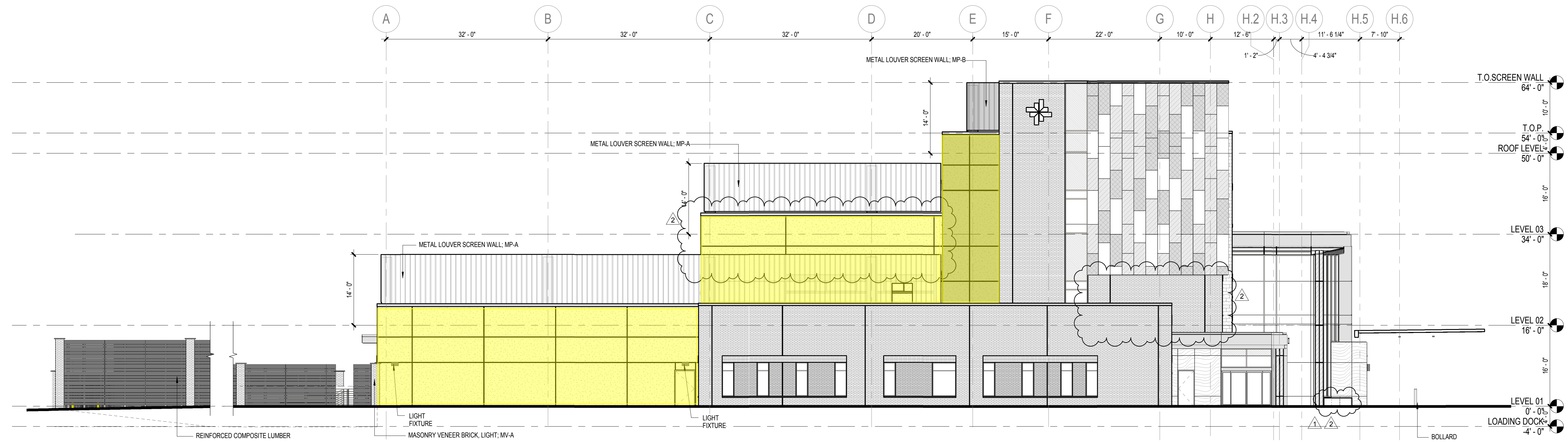
**LANDSCAPE**  
CKLA  
2905 Oak Crest Ave  
Austin, Texas 78704  
817-735-6000

**MEP ENGINEERING**  
JACOBS  
777 Main Street  
Fort Worth, Texas 76102  
817-336-6000  
Texas Registered Engineering Firm F-2968

**DIETARY**  
SDI CONSULTING  
7700 Greenway Blvd, #96  
Dallas, Texas 75209  
214-357-0077

**MEDICAL EQUIPMENT**  
VIZIENT  
5543 Legacy Drive  
Plano, Texas 75204  
972-212-9680

**BaylorScott&White**  
MEDICAL CENTER  
Pflugerville Hospital  
2600 East Pflugerville Parkway, Pflugerville, Texas 78660



**2 OVERALL EXTERIOR ELEVATION - WEST**  
SCALE: 3/32" = 1'-0"



**1 OVERALL EXTERIOR ELEVATION - SOUTH**  
SCALE: 3/32" = 1'-0"

**EXTERIOR GENERAL NOTES**

- CURTAINWALL ALUMINUM ASSEMBLY, CW-A:  
- SYSTEM WITH 1 1/2" BY 2 1/2" MULLIONS U.N.O. ON GLAZING ELEVATIONS  
- GLASS TYPE: GL-A  
- MULLION COLOR: CLEAR ANODIZED ALUMINUM
- CURTAINWALL ALUMINUM ASSEMBLY, CW-B:  
- SYSTEM WITH 1 1/2" BY 2 1/2" MULLIONS U.N.O. ON GLAZING ELEVATIONS  
- GLASS TYPE: GL-A  
- MULLION COLOR: CLEAR ANODIZED ALUMINUM
- STOREFRONT ALUMINUM ASSEMBLY, SF-A:  
- SYSTEM WITH 4 1/2" BY 2" MULLIONS U.N.O. ON GLAZING ELEVATIONS  
- GLASS TYPE: GL-A, U.N.O.  
- MULLION COLOR: CLEAR ANODIZED ALUMINUM
- WINDOW AT OPERATION ROOMS, W-A:  
- ALUMINUM WINDOW WITH INTEGRATED BLINDS  
- GLASS TYPE: GL-A  
- MULLION COLOR: CLEAR ANODIZED ALUMINUM
- MASONRY VENEER BRICK LIGHT, MV-A:  
- MODULAR BRICK, RUNNING BOND  
- LIGHT
- MASONRY VENEER BRICK MEDIUM, MV-B:  
- MODULAR BRICK, RUNNING BOND  
- MEDIUM
- MASONRY VENEER BRICK DARK, MV-C:  
- MODULAR BRICK, RUNNING BOND  
- DARK
- METAL SCREEN WALL PROFILE PANEL, MP-A AND MP-B:  
- VERTICAL APPLICATION
- COMPOSITE METAL PANEL, CMP-A:  
- 2 7/8" METAL PANEL SYSTEM, DRY SEALED MCJ  
- HORIZONTAL AND VERTICAL COLORIZED JOINT
- COMPOSITE METAL PANEL, CMP-B:  
- 2 7/8" METAL PANEL SYSTEM, DRY SEALED MCJ  
- HORIZONTAL AND VERTICAL COLORIZED JOINT
- COMPOSITE METAL PANEL, CMP-C:  
- 2 7/8" METAL PANEL SYSTEM, DRY SEALED MCJ  
- HORIZONTAL AND VERTICAL COLORIZED JOINT
- COMPOSITE METAL PANEL, CMP-D:  
- 1 1/2" METAL PANEL SYSTEM, NET AND DRY SEALED MCJ  
- DRY SEALED MCJ: HORIZONTAL AND VERTICAL COLORIZED JOINT
- PHENOLIC WALL PANEL, PWP-A:  
- 8MM WALL PANEL, EXPOSED FASTENERS  
- TRESPA METEON, FRENCH WALNUT MATTE COLOR
- NATURAL LIME STONE, STV-A:  
- NOMINAL 4" DEEP, 8" X 24"  
- 1/3 RUNNING BOND  
- SAWN FINISH
- NATURAL LIME STONE, STV-B:  
- NOMINAL 4" DEEP, 8" X 24"  
- 1/3 RUNNING BOND  
- SAWN FINISH
- NATURAL LIME STONE, STV-C:  
- SLABS  
- SAWN FINISH
- SUN CONTROL DEVICE SCD-A:  
- NOT USED
- STANDARD AND CUSTOM SEALANT COLORS TO MATCH ADJACENT EXTERIOR COLOR
- EXPOSED METAL FLASHINGS, SCUPPERS, AND MISC. METAL TRIM. COLOR TO MATCH ADJACENT EXTERIOR MATERIAL COLOR
- REF. WALL SECTIONS FOR MASONRY SHELF ANGLE LOCATIONS
- SUN EXTERIOR LIGHT FIXTURES AND LIGHT BOLLARD TYPES. REFERENCE ELECTRICAL DRAWINGS.
- FOR EXTERIOR LIGHT FIXTURE DIMENSIONS:  
- HEIGHT DIMENSIONS ARE TAKEN TO BOTTOM OF FIXTURE  
- HORIZONTAL DIMENSIONS ARE TAKEN TO CENTERLINE OF FIXTURE

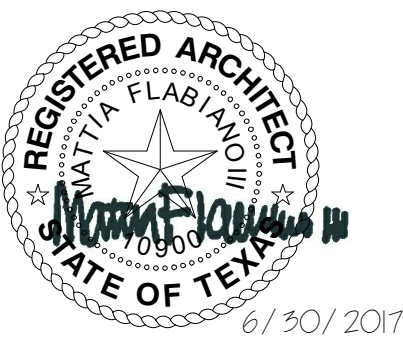
**EXTERIOR MATERIAL LEGEND**

| SYMBOL   | DESCRIPTION                             | SYMBOL   | DESCRIPTION                        | SYMBOL   | DESCRIPTION  | SYMBOL   | DESCRIPTION                          |
|----------|---|----------|------------------------------------|----------|--|----------|--------------------------------------|
| [Symbol] | COMPOSITE METAL PANEL, COLOR TBD, CMP-A | [Symbol] | MASONRY VENEER BRICK, LIGHT, MV-A  | [Symbol] | MASONRY VENEER LIMESTONE, SPLIT FACE FINISH, STV-A | [Symbol] | METAL LOUVER SCREEN WALL, GRAY, MP-A |
| [Symbol] | COMPOSITE METAL PANEL, COLOR TBD, CMP-B | [Symbol] | MASONRY VENEER BRICK, MEDIUM, MV-B | [Symbol] | MASONRY VENEER LIMESTONE, SAWN FACE FINISH, STV-B  | [Symbol] | METAL LOUVER SCREEN WALL, BLUE, MP-B |
| [Symbol] | COMPOSITE METAL PANEL, COLOR TBD, CMP-C | [Symbol] | MASONRY VENEER BRICK, DARK, MV-C   | [Symbol] | EFS, LIGHT, EFA                                    | [Symbol] | VISION GLASS                         |
| [Symbol] | COMPOSITE METAL PANEL, GRAY, CMP-D      | [Symbol] | PHENOLIC WALL PANEL, TRESPA, PWP-A | [Symbol] | EFS, DARK, EFB                                     | [Symbol] | SPANDREL GLASS                       |
| [Symbol] |   | [Symbol] |                                    | [Symbol] | CMU BLOCK, INTEGRATED COLOR                        | [Symbol] | ART GLASS - BLUE                     |
| [Symbol] |   | [Symbol] |                                    | [Symbol] |  | [Symbol] | ART GLASS - FROST                    |

REVISION HISTORY

| REVISION | DESCRIPTION    | DATE        |
|----------|----------------|-------------|
| 2        | BID PACKAGE 03 | 30 JUN 2017 |
| 1        | ADDENDUM C     | 01 MAY 2017 |

PROFESSIONAL SEALS



ARCHITECTURAL - EXTERIOR ELEVATIONS

DRAWN BY: TEAM  
PROJECT NUMBER: 316052  
CHECKED BY: TEAM  
PROJECT ABBREVIATION: BSW-P-H  
DATE: 10 APR 2017

A-201  
SHEET NUMBER

Page Southerland Page, Inc.  
1800 Main Street Suite 123  
Dallas, TX 75201  
page@pspi.com  
Tel: 214-522-3900  
Fax: 214-522-4390

ARCHITECTURE (ENGINEERING) INTERIORS (PLANNING) CONSULTING  
Austin / Dallas / Denver / Houston / San Francisco / Washington DC /  
International Affiliate Offices

**CIVIL**  
PAGE  
400 W. Cesar Chavez Street  
Suite 500  
Austin, Texas 78701  
512-472-6721

**LANDSCAPE**  
CKLA  
2905 Oak Crest Ave  
Austin, Texas 78704  
512-445-0431

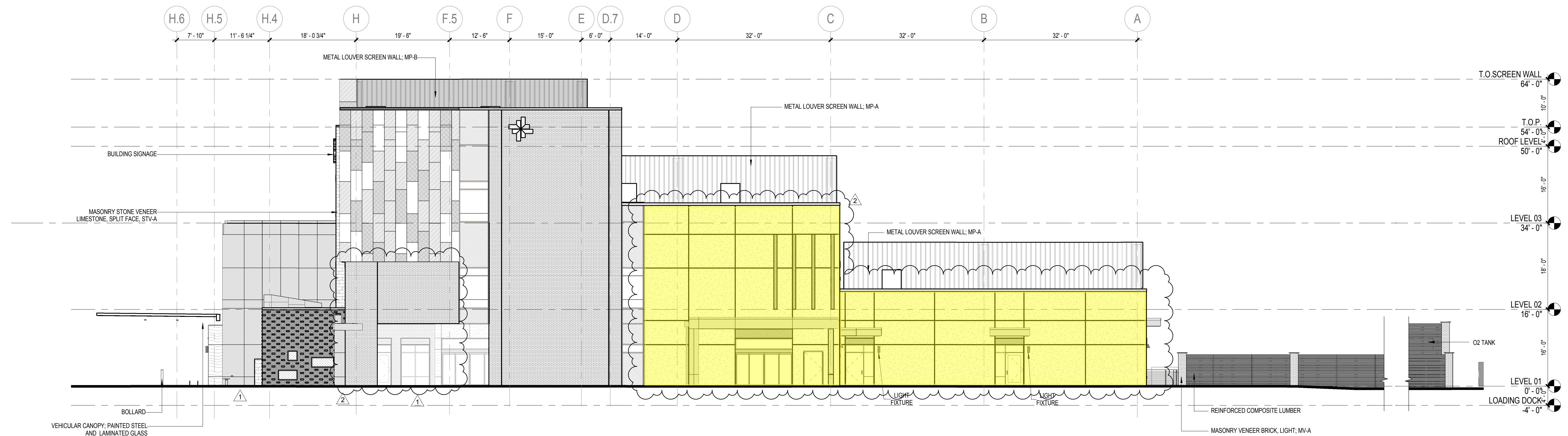
**DIETARY**  
SDI CONSULTING  
7700 Greenway Blvd, #96  
Dallas, Texas 75209  
214-357-0077

**STRUCTURAL**  
PAGE  
1800 Main Street  
Suite 123  
Dallas, Texas 75201  
512-472-6721

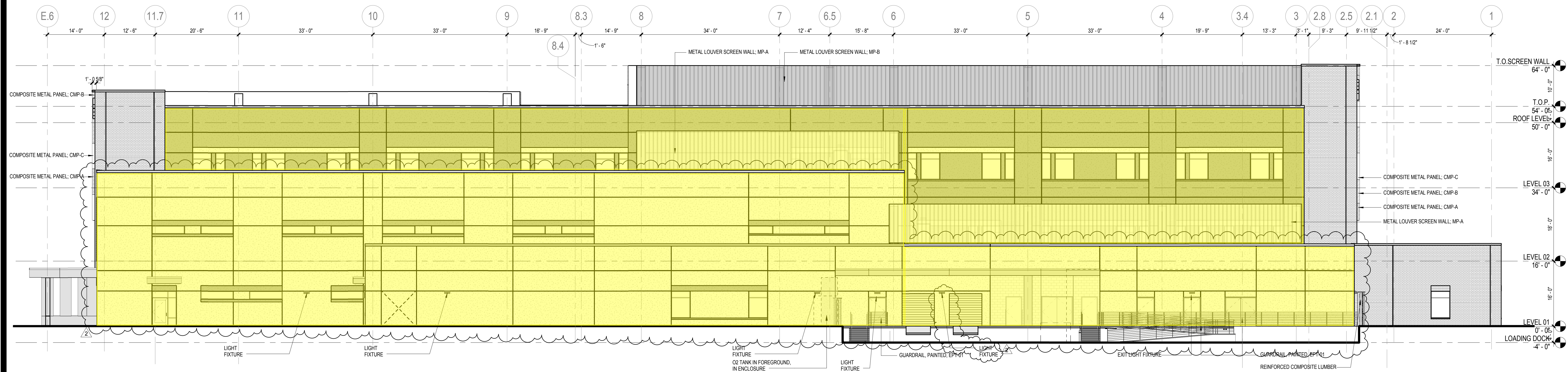
**MEP ENGINEERING**  
JACOBS  
777 Main Street  
Fort Worth, Texas 76102  
817-735-6000  
Texas Registered Engineering  
Firm F-2966

**MEDICAL EQUIPMENT**  
VIZENT  
5543 Legacy Drive  
Plano, Texas 75204  
972-212-9680

**BaylorScott&White**  
MEDICAL CENTER  
**Pflugerville Hospital**  
2600 East Pflugerville Parkway, Pflugerville, Texas 78660



2 OVERALL EXTERIOR ELEVATION - EAST  
SCALE: 3/32" = 1'-0"



1 OVERALL EXTERIOR ELEVATION - NORTH  
SCALE: 3/32" = 1'-0"

**EXTERIOR GENERAL NOTES**

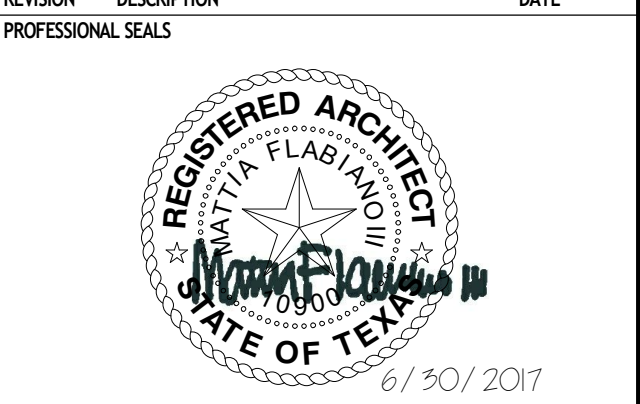
- CURTAINWALL ALUMINUM ASSEMBLY, CW-A:  
- SYSTEM WITH 1" BY 2 1/2" MULLIONS U.N.O. ON GLAZING ELEVATIONS  
- GLASS TYPE: GL-A  
- MULLION COLOR: CLEAR ANODIZED ALUMINUM
- CURTAINWALL ALUMINUM ASSEMBLY, CW-B:  
- SYSTEM WITH 1 1/2" BY 2 1/2" MULLIONS U.N.O. ON GLAZING ELEVATIONS  
- GLASS TYPE: GL-A  
- MULLION COLOR: CLEAR ANODIZED ALUMINUM
- STOREFRONT ALUMINUM ASSEMBLY, SF-A:  
- SYSTEM WITH 4 1/2" BY 2 1/2" MULLIONS U.N.O. ON GLAZING ELEVATIONS  
- GLASS TYPE: GL-A, U.N.O.  
- MULLION COLOR: CLEAR ANODIZED ALUMINUM
- WINDOW AT OPERATION ROOMS, W-A:  
- ALUMINUM WINDOW WITH INTEGRATED BLINDS  
- GLASS TYPE: GL-A  
- MULLION COLOR: CLEAR ANODIZED ALUMINUM
- MASONRY VENEER BRICK LIGHT, MV-A:  
- MODULAR BRICK, RUNNING BOND  
- LIGHT
- MASONRY VENEER BRICK MEDIUM, MV-B:  
- MODULAR BRICK, RUNNING BOND  
- MEDIUM
- MASONRY VENEER BRICK DARK, MV-C:  
- MODULAR BRICK, RUNNING BOND  
- DARK
- METAL SCREEN WALL PROFILE PANEL, MP-A AND MP-B:  
- VERTICAL APPLICATION
- COMPOSITE METAL PANEL, CMP-A:  
- 2 7/8" METAL PANEL SYSTEM, DRY SEALED MCM  
- HORIZONTAL AND VERTICAL COLORIZED JOINT
- COMPOSITE METAL PANEL, CMP-B:  
- 2 7/8" METAL PANEL SYSTEM, DRY SEALED MCM  
- HORIZONTAL AND VERTICAL COLORIZED JOINT
- COMPOSITE METAL PANEL, CMP-C:  
- 2 7/8" METAL PANEL SYSTEM, DRY SEALED MCM  
- HORIZONTAL AND VERTICAL COLORIZED JOINT
- NATURAL LIME STONE, STV-A:  
- NOMINAL 4" DEEP 8" X 24"  
- 1/3 RUNNING BOND  
- SAWN FINISH
- NATURAL LIME STONE, STV-B:  
- NOMINAL 4" DEEP 8" X 24"  
- 1/3 RUNNING BOND  
- SAWN FINISH
- NATURAL LIME STONE, STV-C:  
- SLABS  
- SAWN FINISH
- COMPOSITE METAL PANEL, CMP-D:  
- 1 1/2" METAL PANEL SYSTEM, WET AND DRY SEALED MCM  
- DRY SEALED MCM HORIZONTAL AND VERTICAL COLORIZED JOINT
- PHENOLIC WALL PANEL, PWP-A:  
- BIM WALL PANEL, EXPOSED FASTENERS  
- TRESPA METEON, FRENCH WALNUT MATTE COLOR
- NATURAL LIME STONE, STV-A:  
- NOMINAL 4" DEEP 8" X 24"  
- 1/3 RUNNING BOND  
- SAWN FINISH
- NATURAL LIME STONE, STV-B:  
- NOMINAL 4" DEEP 8" X 24"  
- 1/3 RUNNING BOND  
- SAWN FINISH
- NATURAL LIME STONE, STV-C:  
- SLABS  
- SAWN FINISH
- SUN CONTROL DEVICE SCD-A:  
- NOT USED
- STANDARD AND CUSTOM SEALANT COLORS TO MATCH ADJACENT EXTERIOR COLOR
- EXPOSED METAL FLASHINGS, SCUPPERS, AND MISC. METAL TRIM. COLOR TO MATCH ADJACENT EXTERIOR MATERIAL COLOR
- REF. WALL SECTIONS FOR MASONRY SHELF ANGLE LOCATIONS
- FOR EXTERIOR LIGHT FIXTURES AND LIGHT BOLLARD TYPES REFERENCE ELECTRICAL DRAWINGS
- FOR EXTERIOR LIGHT FIXTURE DIMENSIONS - HEIGHT DIMENSIONS ARE TAKEN TO BOTTOM OF FIXTURE - HORIZONTAL DIMENSIONS ARE TAKEN TO CENTERLINE OF FIXTURE

**EXTERIOR MATERIAL LEGEND**

| SYMBOL   | DESCRIPTION                             | SYMBOL   | DESCRIPTION                        | SYMBOL   | DESCRIPTION  | SYMBOL   | DESCRIPTION                          | SYMBOL   | DESCRIPTION       |
|----------|---|----------|------------------------------------|----------|--|----------|--------------------------------------|----------|-------------------|
| [Symbol] | COMPOSITE METAL PANEL, COLOR TBD, CMP-A | [Symbol] | MASONRY VENEER BRICK, LIGHT, MV-A  | [Symbol] | MASONRY VENEER LIMESTONE, SPLIT FACE FINISH, STV-A | [Symbol] | METAL LOUVER SCREEN WALL, GRAY, MP-A | [Symbol] | VISION GLASS      |
| [Symbol] | COMPOSITE METAL PANEL, COLOR TBD, CMP-B | [Symbol] | MASONRY VENEER BRICK, MEDIUM, MV-B | [Symbol] | MASONRY VENEER LIMESTONE, SAWN FACE FINISH, STV-B  | [Symbol] | METAL LOUVER SCREEN WALL, BLUE, MP-B | [Symbol] | SPANDREL GLASS    |
| [Symbol] | COMPOSITE METAL PANEL, COLOR TBD, CMP-C | [Symbol] | MASONRY VENEER BRICK, DARK, MV-C   | [Symbol] | EFS, LIGHT, EF-A                                   | [Symbol] | [Symbol]                             | [Symbol] | ART GLASS - BLUE  |
| [Symbol] | COMPOSITE METAL PANEL, GRAY, CMP-D      | [Symbol] | [Symbol]                           | [Symbol] | EFS, DARK, EF-B                                    | [Symbol] | [Symbol]                             | [Symbol] | ART GLASS - FROST |
| [Symbol] | PHENOLIC WALL PANEL, TRESPA, PWP-A      | [Symbol] | [Symbol]                           | [Symbol] | CMU BLOCK, INTEGRATED COLOR                        | [Symbol] | [Symbol]                             | [Symbol] | [Symbol]          |

REVISION HISTORY

| REVISION | DESCRIPTION    | DATE        |
|----------|----------------|-------------|
| 2        | BID PACKAGE 03 | 30 JUN 2017 |
| 1        | ADDENDUM C     | 01 MAY 2017 |



ARCHITECTURAL - EXTERIOR ELEVATIONS

DRAWN BY: [Name] CHECKED BY: [Name]  
PROJECT NUMBER: 316052 PROJECT ABBREVIATION: BSW-P-H  
DRAWING ISSUE: BID PACKAGE 02 DATE: 10 APR 2017

A-202  
SHEET NUMBER

FILE NAME: C:\Users\annellec\Documents\316052A-ARCH-R-16-Pflugerville-SHELL-CORE-CENTRAL\_annellec.rvt  
 USER NAME: ANNELLEC  
 DATE/TIME: 6/30/2017 10:48:19 AM