

**PROFESSIONAL SERVICES  
SUPPLEMENTAL AGREEMENT #3  
FOR  
CITY INTERSECTION IMPROVEMENTS II**

**STATE OF TEXAS           §  
  §  
COUNTY OF TRAVIS       §**

This Supplemental Agreement No. 3 to a contract for Professional Services is made by and between the City of Pflugerville, Texas ("City") and Burns & McDonnell Engineering Company, Inc. ("Consultant"). City and Consultant may be referred to herein singularly as "Party" or collectively as the "Parties."

WHEREAS, the City and Consultant executed an Agreement for Professional Services ("Agreement") on the 15<sup>TH</sup> day of July, 2021 for the City Intersection Improvement II project ("Project") in the amount of \$224,335.13; and

WHEREAS, the City and Consultant executed a Professional Services Supplemental Agreement #1 on the 16<sup>TH</sup> day of September, 2022 for the Project in the amount of \$767,795.89; and

WHEREAS, the City and Consultant executed a Professional Services Supplemental Agreement #2 on the 9<sup>th</sup> day of May for the Project in the amount of \$0.00; and

WHEREAS, the City and Consultant desire to enter into a Professional Services Supplemental Agreement #3 for the Project in the amount of \$204,313.39 to add roadway, traffic, project management, utility services, and public involvement scope for improvements to the intersections of SH130 (Copper Mine Overpass) and FM 685, and E. Pflugerville Parkway and FM 685 to the Agreement; and to reallocate budget line items from Bid Phase, Construction Phase Services and ROW/Easement Services; and transfer to Preliminary Design (60%) and Final Design (90%); and

WHEREAS, it has become necessary to amend the Agreement to modify the provisions for the Scope of Services, and Compensation; and

WHEREAS, it is necessary for the City to amend its agreements from time to time to comply with changes in state law relating to contracts of municipalities.

NOW, THEREFORE, premises considered, the City and the Consultant agree that said Agreement is amended as follows:

**I.**

Article I. Scope of Services and Exhibit 1, shall be amended as set forth in the attached Addendum to Exhibit 1.

2.

Article II. Compensation to Consultant and Exhibit 2 (Fee Schedule), shall be amended by increasing by \$204,313.39 the amount payable under the Agreement for a total of \$1,196,444.41 as shown by the attached Addendum to Exhibit 2 (Fee Schedule).

Except as amended hereby, and as amended as indicated above, the terms of the Agreement shall remain unchanged and in full force and effect.

**EXECUTED** and **AGREED** to as of the dates indicated below.

**CITY OF  
PFLUGERVILLE**

**CONSULTANT**

\_\_\_\_\_  
(Signature)

  
\_\_\_\_\_  
(Signature)

Printed Name: Sereniah Breland

Printed Name: **Andrew Reid**

Title: City Manager

Title: **Principal**

Date: \_\_\_\_\_

Date: 10/03/2023

APPROVED AS TO FORM:

  
\_\_\_\_\_

Charles E. Zech  
City Attorney  
DENTON NAVARRO ROCHA BERNAL & ZECH, P.C.

\_\_\_\_\_



July 19, 2023

Jeff Dunsworth, P.E., City Engineer  
 City of Pflugerville  
 15500 Sun Light Near Way, #B, Bldg 6  
 PO Box 589 Pflugerville, Texas 78691

Re: City of Pflugerville Intersections II PSSA 3

Mr. Dunsworth,

Burns & McDonnell (BMcD) requests that portions of the fee for tasks “Bid Phase” and “Construction Phase Services” under the Intersections II contract, be re-allocated to cover expenses incurred and anticipated for “Preliminary Design (60%)” and “Final Design (90%)” tasks on the project. BMcD also requests a similar fee reallocation be provided for their sub-consultant Peloton Land Solutions, Inc. (Peloton), to transfer fee from “ROW/Easement Services” to “Final Design & Final Docs”.

The fee reallocation is for additional effort needed to complete BMcD’s “Preliminary Design (60%)” and “Final Design (90%)”, as well as Peloton’s “Final Design & Final Docs” tasks. The fee reallocation results in a net-zero-dollar impact to the project while affording the ability to complete services with existing approved funds. BMcD anticipates that all the funding currently allocated to the project is needed to finish the project, but most of the remaining budget is needed for design phases rather than bid and construction phases. Peloton does not anticipate needing additional funds for ROW research and their original fee proposal overestimated the number of drainage easements and ROW acquisitions. Both intersections are included in the contract fees.

Task Reallocation as follows:

- 1) Reallocate \$16,700.00 from PSSA#1 BMcD “Bid Phase” (task 5) to \$8,350.00 “Preliminary Design (60%)” (task 3) and \$8,350.00 “Final Design (90%)” (task 4).
- 2) Reallocate \$37,800.00 from PSSA#1 BMcD “Construction Phase Services” (task 5) to \$18,900.00 “Preliminary Design (60%)” (task 3) and \$18,900.00 “Final Design (90%)” (task 4).
- 3) Reallocate \$12,500.00 from PSSA#1 Peloton “ROW/Easement Services” (task 7) to \$12,500.00 “Final Design (90%)” (task 4).

<b>BMcD</b>	<b>Contract Fee</b>	<b>Change</b>	<b>Re-Allocated Fee</b>
3. Preliminary Design (60%)	\$ 147,927.00	\$ 27,250.00	\$ 175,177.00
4. Final Design (90%)	\$ 124,939.00	\$ 27,250.00	\$ 152,189.00
5. Bid Phase	\$ 26,708.00	\$ (16,700.00)	\$ 10,008.00
6. Construction Phase Services	\$ 56,741.00	\$ (37,800.00)	\$ 18,941.00
<b>Totals</b>	<b>\$ 356,315.00</b>	<b>\$ -</b>	<b>\$ 356,315.00</b>



Jeff Dunsworth, P.E., City Engineer  
City of Pflugerville  
July 19, 2023  
Page 2

**Peloton**

4. Final Design (90%)	\$	13,200.00	\$	12,500.00	\$	25,700.00
7. ROW/Easement Services (Sub)	\$	44,310.00	\$	(12,500.00)	\$	31,810.00
		<b>Totals</b>	\$	57,510.00	\$	-
			\$	57,510.00	\$	57,510.00

Existing scope for BMcD “Bid Phase” and “Construction Phase Services”, and Peloton “ROW/Easement Services” remain unchanged.

Sincerely,

Ken McHenry, PE  
Project Manager

## ***Pflugerville Intersection Improvements – Addendum to Exhibit 1***

***Proposal for Engineering Services – PSSA #3***

***July 20, 2023***

### **Scope of Services**

#### **PROJECT LOCATION AND GENERAL DESCRIPTION OF THE WORK:**

This scope includes additional services requested by the City of Pflugerville (CITY) that are required for Burns & McDonnell Engineering Company, Inc. (CONSULTANT) to complete final engineering design and analysis of improvements to the intersections of E. Pflugerville Parkway at FM 685 and Copper Mine at SH 130. The scope generally includes additional roadway, traffic, project management, utility services, and public involvement services.

CONSULTANT will manage the work outlined in this scope to provide efficient and effective use of CONSULTANT's and CITY's time and resources. CONSULTANT will manage change, communicate effectively, coordinate internally and externally as needed, and proactively address issues with the CITY's Project Manager as necessary to make progress on the work.

### **E. Pflugerville Parkway at FM 685**

#### **Work to be Performed**

Task 1	Additional roadway, traffic, PM, & environmental scope
Task 2	Public Involvement
Task 3	Additional Services

#### **TASK 1. Additional roadway, traffic, PM, environmental scope & utility services**

- 1.1. Traffic analysis and configuration for Northpoint development access along Pflugerville Parkway at the U-turn location.
- 1.2. Traffic analysis to determine impacts along Pflugerville Parkway if the existing Walgreens left turn movement is kept with the U-turn improvements.
- 1.3. Design geometry for two U-turn configurations at the development entrance including main lane, median, driveway, striping, sidewalk adjustments and utility evaluation. Traffic analysis based on assumptions to determine if the U-turn can function properly and not impact the main intersection.
- 1.4. Multiple iterations of exhibits for both intersections for explanation on multiple design ideas and overall meeting visualizations. Exhibits reflect changes made after schematic approval.
- 1.5. Meetings and exhibits for public meeting, including traffic exhibit/SimTraffic.
- 1.6. Analysis to remove NB/SB right turn lanes and evaluate storage for EB Pflugerville Parkway.
- 1.7. Additional meetings: Coordination with developer, CITY staff, GEC, and TxDOT; evaluation of bulb locations; and ROW acquisition.
- 1.8. Environmental Services: Environmental Services: Per coordination with TxDOT AUS, BMcD is to perform Antiquities Code of Texas coordination with the Texas Historical Commission (THC) for archeological and historic resources, a hazardous materials initial site assessment, a species analysis form and spreadsheet, and public involvement which includes a Notice of Opportunity to Comment (NOC) for two property owners

***Pflugerville Intersection Improvements – Addendum to Exhibit 1***

***Proposal for Engineering Services – PSSA #3***

***July 20, 2023***

- w/15-day comment period (NOCs sent to property owners) and Documentation of NOC.
- 1.8.1 Cultural Resources Coordination with THC will include archeological and historical resources desktop analysis. Depending on the findings of the desktop analysis, the THC may require a limited archeological survey in areas of proposed ROW. A Texas Antiquities Permit would be obtained prior to any field work. An historical field survey is not anticipated.
  - 1.8.2 Hazardous Materials ISA will be performed to identify potential hazardous materials impacts.
  - 1.8.3 Surface Water Analysis Form will be completed due to the presence of Wilbarger Creek crossing the project area.
  - 1.8.4 Species Analysis Form & Spreadsheet will be completed to comply with the Endangered Species Act, the Bald and Golden Eagle Protection Act, and Migratory Bird Treaty Act.
  - 1.8.5 Community Impacts Assessment Technical Report Form will be completed, but it is anticipated that only *Section A. Project Screening* would need to be completed.
  - 1.8.6 Notice and Opportunity to Comment Template per TxDOT state CE requirements.
  - 1.8.7 Documentation of Notice and Opportunity to Comment per TxDOT state CE requirements.
  - 1.8.8 See Copper Mine at SH130 scope for additional Utility Services.

**DELIVERABLES**

- A. THC Coordination letter report
- B. Draft and final Archeological Survey Report – if required
- C. Draft and final Hazardous Materials ISA
- D. Surface Water Analysis Form
- E. Species Analysis Form
- F. Draft and final Species Analysis Spreadsheet
- G. Draft and final Community Impacts Assessment Technical Report Form
- H. Notice and Opportunity to Comment Template
- I. Documentation of Notice and Opportunity to Comment

**TASK 2. Public involvement**

- 2.1 Develop a PI Plan including identification of stakeholders and notification of the public and property owners. The PI plan will also include a schedule with approval and publication deadlines.
- 2.2 Update the Property owner and resident mailing list
- 2.3 Host 1 business owner stakeholder meeting before the Open House. Stakeholders could

## ***Pflugerville Intersection Improvements – Addendum to Exhibit 1***

### ***Proposal for Engineering Services – PSSA #3***

***July 20, 2023***

include representatives for the Walmart center and Timmaron property. The CONSULTANT would be responsible for the meeting invitation and materials to include schematic roll plots and fact sheet.

- 2.4 The CONSULTANT will work with CITY staff to develop a Frequently Asked Question document and project factsheet to be used on the CITY's website and at the stakeholder and open house meetings (1).
- 2.5 The CONSULTANT will work with the CITY to host an in-person public open house meeting. The CITY will provide a location for the open house and advertisements in any local paper and website. The CONSULTANT will be responsible for the following:
  - 2.5.1 Develop PowerPoint (PPT) that the CITY will post on its website. The purpose of the PPT will be to explain the project, project process, schedule, purpose and design to the public.
  - 2.5.2 Develop and mail English Meeting Notices to property owners
  - 2.5.3 Develop public meeting exhibit boards (up to 5 boards) and roll plots
  - 2.5.4 Develop an electronic survey/online comment form. The survey would include Name, Address, what routes the person normally takes.
  - 2.5.5 Develop an open house meeting summary that includes responses to questions and comments. Comments will be collected via email, survey and at the open house meeting.

#### **DELIVERABLES**

- J. PI Plan
- K. Property owner mailing
- L. Stakeholder meeting invitation
- M. FAQ and factsheet
- N. Public Meeting notices (English)
- O. PowerPoint, Script and Project Video (English only)
- P. Public Meeting sign-in sheets, boards and roll plots
- Q. Electronic/online survey
- R. Public meeting summary include comment response

#### **TASK 3. Additional Services**

This scope is explicitly based on the roadway geometry as of June 12, 2023, as displayed in Exhibit 4. Any material changes made to the intersection configuration or intersection alternative implementation that requires redesign of the road, changes right of way or utility impacts, changes environmental impacts/requirements, requires additional traffic analysis, etc., will be considered

***Pflugerville Intersection Improvements – Addendum to Exhibit 1***

***Proposal for Engineering Services – PSSA #3***

***July 20, 2023***

additional services and are specifically excluded from this scope.

The following additional services are specifically excluded from the scope but can be added if CITY and CONSULTANT agree to scope and additional compensation in writing:

- Develop a project Flyover Video without narration. The video can have music and its purpose would be to show aspects of the project design to the public.
- Property owner door hanger
- Press Release and social media posts
- Text for Changeable Message Signs
- Take information developed for the Public Meeting and post to the CITY website
- Traffic modeling
- Third party coordination with entities other than the CITY, including developers, business owners, property owners, engineers designing other projects, and others not specifically detailed within the scope of services
- Additional environmental services not specifically identified in scope of services
- Additional public involvement services not specifically identified in scope of services
- Other services as requested by the CITY

**Copper Mine at SH 130**

**Work to be Performed**

- Task 1 Additional roadway, traffic, PM, & environmental scope
- Task 2 Public Involvement

**TASK 1. Additional roadway, traffic, PM, environmental scope & utility services**

- 1.1. Redesign the improvements along FM 685 for the Copper Mine intersection, reducing the southbound lanes to 11’.
- 1.2. Exhibits to reflect changes made after schematic approval.
- 1.3. Meetings and exhibits for public meeting, including traffic exhibit/SimTraffic.
- 1.4. Additional meetings: Coordination with developer, CITY staff, GEC, TxDOT, ROW acquisition.
- 1.5. Environmental Services
  - 1.5.1. Cultural Resources Coordination with THC will include archeological and historical resources desktop analysis. Historical and or archeological field surveys are not anticipated.
  - 1.5.2. Hazardous Materials ISA will be performed to identify potential hazardous materials impacts.



***Pflugerville Intersection Improvements – Addendum to Exhibit 1***

***Proposal for Engineering Services – PSSA #3***

***July 20, 2023***

- 1.5.3. Species Analysis Form & Spreadsheet will be completed to comply with the Endangered Species Act, the Bald and Golden Eagle Protection Act, and Migratory Bird Treaty Act.
- 1.5.4. Notice and Opportunity to Comment Template per TxDOT state CE requirements.
- 1.5.5. Documentation of Notice and Opportunity to Comment per TxDOT state CE requirements.
- 1.6. Utility Services
- 1.6.1. ENGINEER to include supplemental QL“A” SUE services at E. Pflugerville Parkway at FM 685 and at Coppermine at SH130. ENGINEER will provide ten (10) QL“A” test holes at locations of potential conflict points identified by the ENGINEER and approved by the CITY. To layout the test holes, The Rios Group (TRG) will attempt to designate the target utility 10-feet either side of the proposed test hole location. No other utility designation or investigation is included in this scope of work.

ENGINEER has made the following assumptions with regard to the test holes on this project:

- All test holes will be accessible to truck-mounted vacuum excavation equipment.
- Right-Of-Way (ROW) permits from the City of Pflugerville (COP) and/or the Texas Department of Transportation (TxDOT) will be required. ENGINEER will obtain all required permits and ensure that coordination and compliance with the appropriate agency is provided.
- It is assumed that any COP permits will be provided at not cost to the ENGINEER.
- Designed traffic control plans will not be required. It is assumed TxDOT typical TCP details will be utilized for any required lane closures.
- Non-routine traffic control measures will be required. ENGINEER will acquire the services of a qualified Maintenance-Of-Traffic (MOT) Subcontractor and ensure that adequate traffic control is provided.
- The coring of pavement will be required at five (5) locations.
- Flowable fill will not be required when backfilling test holes and full-section pavement repair (including sidewalks) will not be required to restore the original pavement surface. If requested, these services can be provided at an additional cost.

**DELIVERABLES**

- A. THC Coordination letter report
- B. Draft and final Hazardous Materials ISA
- C. Species Analysis Form
- D. Draft and final Species Analysis Spreadsheet

***Pflugerville Intersection Improvements – Addendum to Exhibit 1******Proposal for Engineering Services – PSSA #3******July 20, 2023***

- E. Notice and Opportunity to Comment Template
- F. Documentation of Notice and Opportunity to Comment
- G. Up to ten (10) QL“A” SUE test holes at location that will be provided by the Client following a review of the QL“B” information.

A summary sheet of all test hole coordinate data and depth information.

8.5” x 11” Test Hole Data Forms for all test hole locations completed. These plans will be signed and sealed by a Professional Engineer and delivered to the Client in electronic PDF form.

**TASK 2. Public Involvement**

- 2.1 Develop a PI Plan including identification of stakeholders and notification of the public and property owners. The PI plan will also include a schedule with approval and publication deadlines.
- 2.2 Update the Property owner and resident mailing list
- 2.3 Host 1 business owner stakeholder meeting before the Open House. The CONSULTANT would be responsible for the meeting invitation and materials to include schematic roll plots and fact sheet.
- 2.4 The CONSULTANT will work with CITY staff to develop a Frequently Asked Question document and project factsheet to be used on the CITY’s website and at the stakeholder and open house meetings (1).
- 2.5 The CONSULTANT will work with the CITY to host an in-person public open house meeting. The CITY will provide a location for the open house and advertisements in any local paper and website. The CONSULTANT will be responsible for the following:
  - 2.5.1 Develop PowerPoint (PPT) that the CITY will post on its website. The purpose of the PPT will be to explain the project, project process, schedule, purpose and design to the public.
  - 2.5.2 Develop and mail English Meeting Notices to property owners
  - 2.5.3 Develop public meeting exhibit boards (up to 5 boards) and roll plots
  - 2.5.4 Develop an electronic survey/online comment form. The survey would include Name, Address, what routes the person normally takes.
  - 2.5.5 Develop an open house meeting summary that includes responses to questions and comments. Comments will be collected via email, survey and at the open house meeting..

**DELIVERABLES**



**Pflugerville Intersection Improvements – Addendum to Exhibit 1**

**Proposal for Engineering Services – PSSA #3**

**July 20, 2023**

- H. PI Plan
- I. Property owner mailing
- J. Stakeholder meeting invitation
- K. FAQ and factsheet
- L. Public Meeting notices (English)
- M. PowerPoint, Script and Project Video (English only)
- N. Public Meeting sign-in sheets, boards and roll plots
- O. Electronic/online survey
- P. Public meeting summary include comment response

**Fee Reallocation**

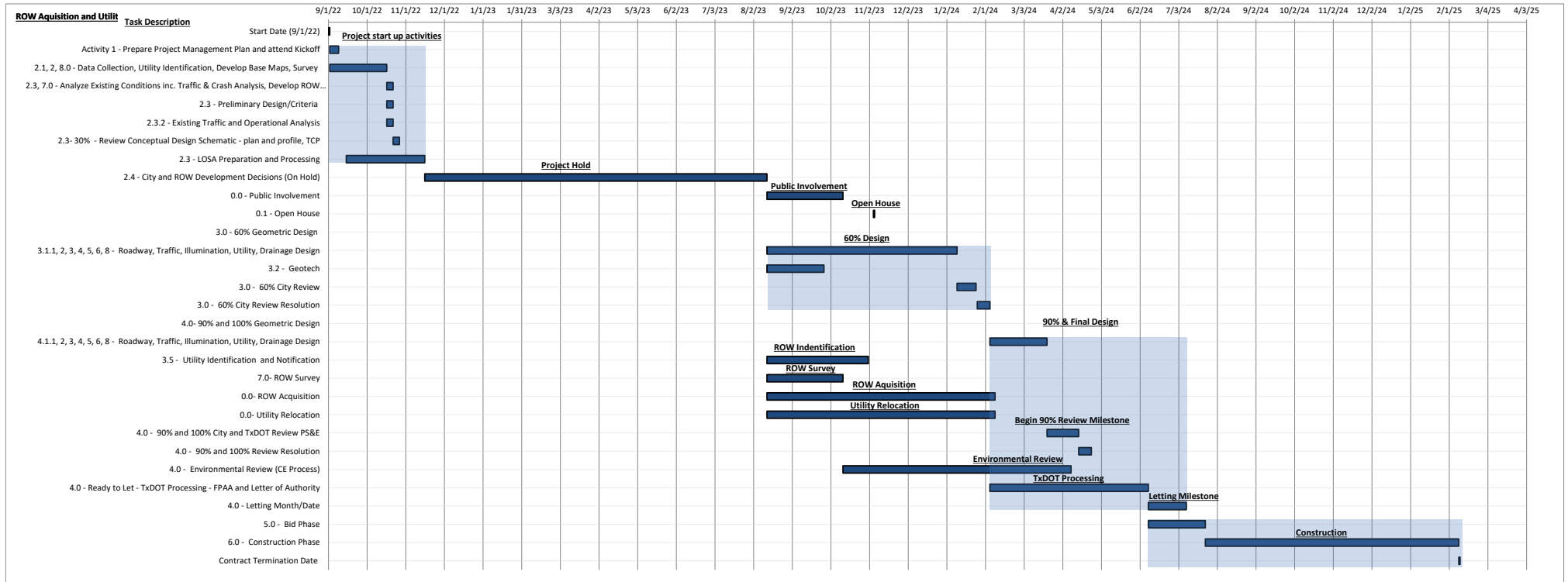
**TASK 1. Fee Reallocation**

- 1.1. Reallocate \$16,700.00 from PSSA#1 BMcD “Bid Phase” (task 5) to \$8,350.00 “Preliminary Design (60%)” (task 3) and \$8,350.00 “Final Design (90%)” (task 4).
- 1.2. Reallocate \$37,800.00 from PSSA#1 BMcD “Construction Phase Services” (task 6) to \$18,900.00 “Preliminary Design (60%)” (task 3) and \$18,900.00 “Final Design (90%)” (task 4).
- 1.3. Reallocate \$12,500.00 from PSSA#1 Peloton “ROW/Easement Services” (task 7) to \$12,500.00 “Final Design (90%)” (task 4).

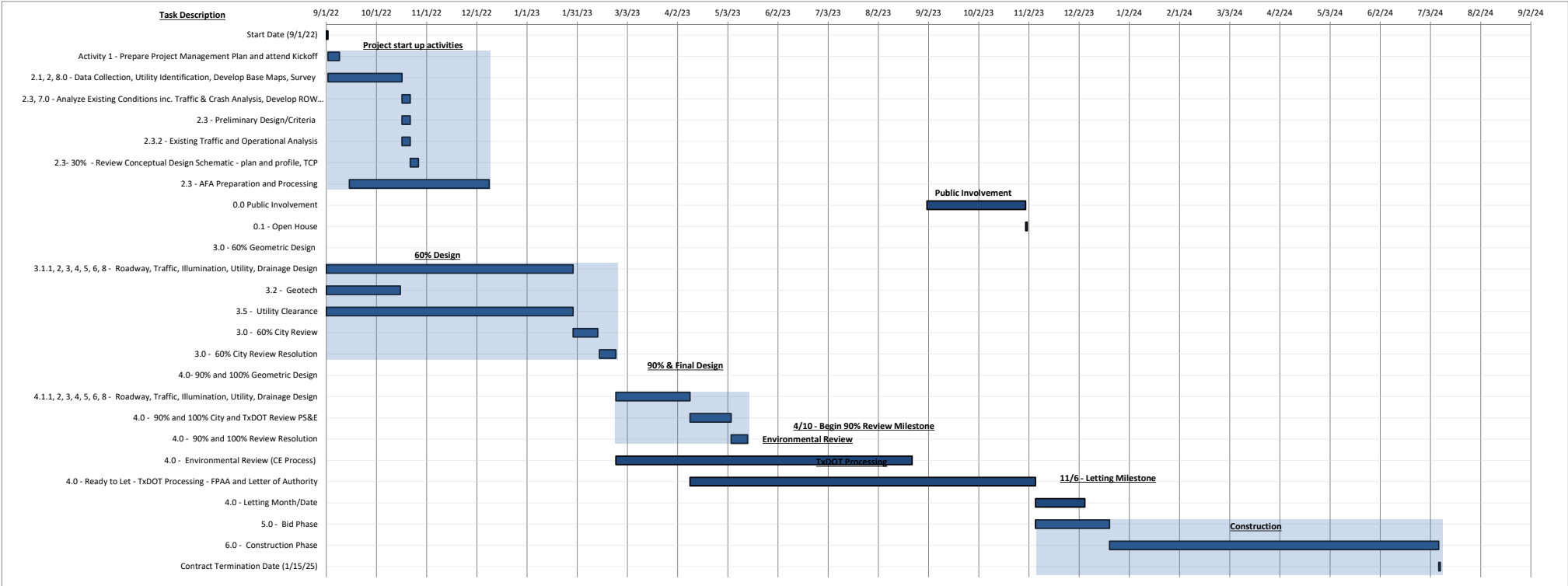
<b>BMcD</b>	<b>Contract Fee</b>	<b>Change</b>	<b>Re-Allocated Fee</b>
3. Preliminary Design (60%)	\$ 147,927.00	\$ 27,250.00	\$ 175,177.00
4. Final Design (90%)	\$ 124,939.00	\$ 27,250.00	\$ 152,189.00
5. Bid Phase	\$ 26,708.00	\$ (16,700.00)	\$ 10,008.00
6. Construction Phase Services	\$ 56,741.00	\$ (37,800.00)	\$ 18,941.00
<b>Totals</b>	\$ 356,315.00	\$ -	\$ 356,315.00

<b>Peloton</b>	<b>Contract Fee</b>	<b>Change</b>	<b>Re-Allocated Fee</b>
4. Final Design (90%)	\$ 13,200.00	\$ 12,500.00	\$ 25,700.00
7. ROW/Easement Services (Sub)	\$ 44,310.00	\$ (12,500.00)	\$ 31,810.00
<b>Totals</b>	\$ 57,510.00	\$ -	\$ 57,510.00

**Pflugerville Intersections II**  
**Work Schedule Pflugerville Parkway**



# Pflugerville Intersections II Work Schedule Copper Mine



**Addendum to Exhibit 2 (Fee Schedule)  
Level of Effort Spreadsheet  
TASK/HOUR BREAKDOWN  
Design Services for  
Pflugerville Parkway @ FM 685 - PSSA #3  
Burns & McDonnell Engineering Company, Inc.  
7/20/2023**

Activity No.	Task Description	BMCD Labor (hours)														Total Hours	Total BMCD Labor Cost	Sub Labor			Expenses				Total Expense Cost	Task Sub Total						
		Project Manager	Senior Engineer / Senior Traffic Engineer	Project Engineer	Designer	Sr Technician	EIT	Senior Public Involvement Officer	Senior Public Involvement Specialist	Public Involvement Specialist	Senior Env. Planner	Env. Planner	GIS Specialist	Staff Archaeo / Historian	Admin			Subconsultants			Total Sub Labor Cost	Subconsultants					Travel	BMCD Directs				
																		Peloton	RIOS	Raba		Peloton	RIOS	Raba								
1	<b>Additional roadway, traffic, PM, &amp; environmental accoe</b>	36	30	0	83	0	27	0	0	132.00	0	62	4	40	0	320	\$66,116	\$0	\$0	\$0	\$0	\$0	\$0	\$0	\$0	\$0	\$630	\$830	\$66,746			
1.1	Traffic analysis for Northport development	2	8		2		8								20	\$3,696													\$0	\$3,696		
1.2	Traffic analysis for Walgreens	2	4				4								10	\$1,876														\$0	\$1,876	
1.3	Two new configurations for west u-turn														0	\$0														\$0	\$0	
1.3.1	Geometry	8			24		8								40	\$7,924														\$0	\$7,924	
1.3.2	Traffic analysis into west side near Walmart	2	4		5		5								16	\$3,032														\$0	\$3,032	
1.4	Exhibits to reflect changes made after schematic approval	6			30										36	\$7,584														\$0	\$7,584	
1.5	Meetings and exhibits for Public Meeting, including traffic exhibit/SimTraffic	4			10										14	\$2,996														\$0	\$2,996	
1.6	Analysis to remove NB/SB right turn lanes and evaluate storage for EB Pflugerville Pkwy	2	2		2		2								8	\$1,584														\$0	\$1,584	
1.7	Additional meetings: Coordination with developer, new City staff/PMs with GEC, TxDOT, sub locations, and ROW acquisition	10	10		10										30	\$6,660														\$0	\$6,660	
1.8	Environmental services														0	\$0														\$0	\$0	
1.8.1	Archaeology/Historical Coordination with Potential Shovel Testing									2	24			40	66	\$12,652										\$455	\$455	\$13,107	\$0	\$13,107		
1.8.2	HazMat ISA									24			4		28	\$6,348										\$175	\$175	\$6,523	\$0	\$6,523		
1.8.3	Surface Water Form									2					2	\$468														\$0	\$468	
1.8.4	Species Analysis Form & Spreadsheet									1	32				33	\$7,466														\$0	\$7,466	
1.8.5	Community Impacts Assessment									8					8	\$1,872														\$0	\$1,872	
1.8.6	Notice and Opportunity to Comment Template									1	2				3	\$696														\$0	\$696	
1.8.7	Documentation of Notice and Opportunity to Comment									2	4				6	\$1,372														\$0	\$1,372	
2	<b>Public Involvement</b>	13	2	2	0	0	0	35	0	141	0	0	0	0	193	\$30,708	\$0	\$0	\$0	\$0	\$0	\$0	\$0	\$0	\$0	\$0	\$0	\$0	\$0	\$2,500	\$2,500	\$33,208
2.1	Develop a PI Plan							2		1					3	\$600														\$0	\$600	
2.2	Update property owner and resident mailing list							4		4					4	\$528														\$0	\$528	
2.3	Host 1 business owner stakeholder meeting	4						4		10					16	\$3,162										\$750	\$750	\$3,912	\$0	\$3,912		
2.4	Develop FAQ and factsheet (English only)	1						2		16					19	\$2,814														\$0	\$2,814	
2.5	Host in-person public open house meeting	2	2	2				10		22					38	\$6,576														\$0	\$6,576	
2.5.1	Develop PPT (English only)	2						4		35					41	\$6,024														\$0	\$6,024	
2.5.2	Develop and mail English Meeting Notices to property owners							1		2					3	\$498														\$0	\$498	
2.5.3	Develop public meeting exhibit boards (up to 5 boards) and roll plots (English only)	2						6		32					40	\$6,096										\$750	\$750	\$1,248	\$0	\$1,248		
2.5.4	Develop an electronic survey/online comment form							1		4					5	\$762														\$0	\$762	
2.5.5	Develop a public meeting summary	2						5		15					22	\$3,618														\$0	\$3,618	
	Technology charges (\$9.95/hr)																													\$5,104.35	\$5,104.35	\$5,104.35
	<b>Totals</b>	49	30	2	83	0	27	35	0	141	40	62	4	40	0	513	\$96,824	\$0	\$0	\$0	\$0	\$0	\$0	\$0	\$0	\$0	\$0	\$0	\$0	\$8,234.35	\$8,234.35	\$105,058.35

Level of Effort Spreadsheet Notes:

Pflugerville Parkway Project Summary	
Total BMCD Hours	513
Total BMCD Labor	\$96,824.00
Total Expense	\$8,234.35
Subconsultant Labor	\$0.00
<b>Total Project Cost</b>	<b>\$105,058.35</b>

**Addendum to Exhibit 2 (Fee Schedule)**  
**Level of Effort Spreadsheet**  
**TASK/HOUR BREAKDOWN**  
**Design Services for**  
**Copper Mine @ SH 130 - PSSA #3**  
**Burns & McDonnell Engineering Company, Inc.**  
**7/20/2023**

Activity No.	Task Description	BMCD Labor (hours)														Total Hours	Total BMCD Labor Cost	Sub Labor				Expenses					Task Sub Total	
		Project Manager	Senior Engineer / Senior Traffic Engineer	Project Engineer	Designer	Sr Technician	EIT	Senior Public Involvement Officer	Senior Public Involvement Specialist	Public Involvement Specialist	Senior Env. Planner	Env. Planner	GIS Specialist	Staff Archaeo / Historian	Admin			Subconsultants			Total Sub Labor Cost	Subconsultants			Travel	BMCD Directs		Total Expense Cost
																		Peloton	RIOS	Raba		Peloton	RIOS	Raba				
1	<b>Additional roadway, traffic, PM, &amp; environmental accoe</b>	20	14	0	54	0	0	0	0	21	36	4	24	0	173	\$36,896	\$0	\$0	\$0	\$0	\$0	\$0	\$0	\$0	\$175	\$175	\$36,991	
1.1	Redesign Cooper Mine to 11' lanes	4	4		32										40	\$8,432											\$8,432	
1.2	Exhibits to reflect changes made after schematic approval	2			12										14	\$2,940												\$2,940
1.1	Meetings and exhibits for Public Meeting, including traffic exhibit/sign traffic	4			10										14	\$2,996												\$2,996
1.4	Additional meetings: Coordination with developer, new City staff/PIMs with GEC, TxDOT, ROW acquisition	10	10												20	\$4,600											\$4,600	
1.4	Environmental services														0	\$0											\$0	
1.5.1	Archaeology/Historical Coordination with THC										1	16		24	41	\$7,906											\$7,906	
1.5.2	HazMat ISA										16		4		20	\$4,478								\$175	\$175	\$4,651		
1.5.3	Species Analysis Form & Spreadsheet										1	16			17	\$3,650											\$3,650	
1.5.4	Notice and Opportunity to Comment Template										1	2			3	\$666											\$666	
1.5.5	Documentation of Notice and Opportunity to Comment										2	2			4	\$920											\$920	
2	<b>Public Involvement</b>	13	2	2	0	0	0	35	0	141	0	0	0	0	193	\$30,708	\$0	\$0	\$0	\$0	\$0	\$0	\$0	\$0	\$1,000	\$1,000	\$31,708	
2.1	Develop a PI Plan							2		1					3	\$600											\$600	
2.2	Update property owner and resident mailing list							4		4					4	\$528											\$528	
2.3	Host 1 business owner stakeholder meeting	4						4		10					18	\$3,192											\$3,192	
2.4	Develop FAQ and factsheet (English only)	1						2		16					19	\$2,814											\$2,814	
2.4	Host in-person public open house meeting	2	2	2				10		22					41	\$6,024											\$6,024	
2.5.1	Develop PPT (English only)	2						4		35					41	\$6,024											\$6,024	
2.5.2	Develop and mail English Meeting Notices to property owners							1		2					3	\$498								\$1,000	\$1,000	\$1,498		
2.5.3	Develop public meeting exhibit boards (up to 5 boards) and roll plots (English only)	2						6		32					40	\$6,096											\$6,096	
2.5.4	Develop an electronic survey/online comment form							1		4					5	\$762											\$762	
2.5.5	Develop a public meeting summary	2						5		15					22	\$3,618											\$3,618	
	Technology charges (\$9.95/Hr)																											
	<b>Totals</b>	<b>33</b>	<b>16</b>	<b>2</b>	<b>54</b>	<b>0</b>	<b>0</b>	<b>35</b>	<b>0</b>	<b>141</b>	<b>21</b>	<b>36</b>	<b>4</b>	<b>24</b>	<b>0</b>	<b>366</b>	<b>\$67,514</b>	<b>\$ -</b>	<b>\$ -</b>	<b>\$ -</b>	<b>\$ -</b>	<b>\$ -</b>	<b>\$ -</b>	<b>\$ -</b>	<b>\$ -</b>	<b>\$ -</b>	<b>\$ -</b>	<b>\$ -</b>

Level of Effort Spreadsheet Notes:

Copper Mine @ SH 130 Project Summary	
Total BMCD Hours	366
Total BMCD Labor	\$67,514.00
Total Expense	\$4,816.70
Sub-consultant Labor	\$0.00
<b>Total Project Cost</b>	<b>\$72,330.70</b>

**Addendum to Exhibit 2 (Fee Schedule)  
Level of Effort Spreadsheet  
TASK/HOUR BREAKDOWN  
Design Services for  
Pflugerville Intersections - FM 685 and Pflugerville Parkway  
The Rios Group, Inc.  
7/20/2023**

Activity No.	Task Description	Labor (hours)											Total Hours	Total Labor Cost	Expense			Total Expense Cost	Task Sub Total			
		SUE Designation (1 person)	SUE Designation (2 person)	Field Manager	Supervisory Engineer	SUE PM	Assistant Project Manager	Senior Utility Coordinator	CADD Technician	EIT	Utility Coordinator	Admin Specialist			Admin	Travel	Assumed Quantity			Rate		
Average of 2020 and 2021 Rates		\$150.00	\$235.00	\$109.85	\$166.06	\$151.93	\$105.89	\$160.00	\$79.76	\$96.48	\$120.00	\$70.80	\$79.04									
1.0	Project Management	0	0	0	0	0	0	0	0	0	0	0	0	0	\$0	\$0	\$0	\$0	\$0	\$0		
1.1	Managing the Team																					
1.2	Communications and Reporting																					
2.0	Conceptual Design	10	0	10	2	4	12	0	12	0	0	0	0	54	\$6,049.34	\$0	\$0	\$0	\$0	\$20,875	\$26,924	
2.1	Data Collection													0	\$0					\$0	\$0	
2.2	Subsurface Utility Engineering (Ref. 8.3)	10		10	2	4	12		12					54	\$6,049.34					\$0	\$6,049	
2.2.1	QL B SUE (1 person)													0	\$0					\$0	\$0	
2.2.2	QL B SUE (2 person)													0	\$0					\$0	\$0	
2.2.3	0-5 feet (3 each)													0	\$0			5	\$1,250.00	\$6,250	\$6,250	
2.2.4	5-8 feet (2 each)													0	\$0			3	\$1,525.00	\$4,575	\$4,575	
2.2.5	8-13 feet (1 each)													0	\$0			2	\$1,900.00	\$3,800	\$3,800	
2.2.6	13-20 feet													0	\$0					\$0	\$0	
2.2.7	Over 20 feet													0	\$0					\$3,025.00	\$0	
2.2.8	Pavement Core (4 each)													0	\$0			5	\$350.00	\$1,750	\$1,750	
2.2.9	Traffic Control (3 days)													0	\$0			3	\$1,500.00	\$4,500	\$4,500	
2.3	Conceptual Design Package													0	\$0					\$0	\$0	
2.4	Conceptual/Construction Estimate (1 Total)													0	\$0					\$0	\$0	
2.5	1st Public Meeting (1 Mtg)													0	\$0					\$0	\$0	
2.6	Environmental													0	\$0					\$0	\$0	
3.0	Preliminary Design (60 Percent)	0	0	0	0	0	0	0	0	0	0	0	0	0	\$0.00	\$0	\$0	\$0	\$0	\$0	\$0	
3.1	Preliminary Drawings and Specifications													0	\$0					\$0	\$0	
3.2	Geotechnical Investigation/Pavement Design													0	\$0					\$0	\$0	
3.3	Constructability Review													0	\$0					\$0	\$0	
3.4	2nd Public Meeting													0	\$0					\$0	\$0	
3.5	Utility Clearance													0	\$0					\$0	\$0	
3.5.1	Create a Utility Contact list and communicate Project Scope (OMITTED)													0	\$0					\$0	\$0	
3.5.2	Initial Utility Kick off Meeting for Utilities													0	\$0.00					\$0	\$0.00	
3.5.3	Utility Progress Meetings (OMITTED)													0	\$0					\$0	\$0	
3.5.4	Complete and maintain a Utility Conflict Matrix and CADD file at 30/60/90/100													0	\$0					\$0	\$0	
3.5.5	Attend Online Design Progress Meetings (assume 12 monthly meetings)													0	\$0					\$0	\$0	
3.5.6	Communicate with the utilities, design team, the GEC and the City. Provide project info, documents, exhibits, plans and work to provide options for adjustment (OMITTED)													0	\$0					\$0	\$0	
3.5.7	Review relocation plans (assume 2 reviews for 10 Utils @ 2 hrs ea + QC) Assist with permits (OMITTED)													0	\$0					\$0	\$0	
3.5.8	Assist team to provide schedules, attend Pre-construction meeting, work with UOs to provide construction starts and expected completions (OMITTED)													0	\$0					\$0	\$0	
3.6	Construction Estimate													0	\$0					\$0	\$0	
4.0	Final Design (90 Percent) and Final Construction Documents (100 Percent)	0	0	0	0	0	0	0	0	0	0	0	0	0	\$0	\$0	\$0	\$0	\$0	\$0	\$0	
5.0	Bid Phase	0	0	0	0	0	0	0	0	0	0	0	0	0	\$0	\$0	\$0	\$0	\$0	\$0	\$0	
6.0	Construction Phase Services	0	0	0	0	0	0	0	0	0	0	0	0	0	\$0	\$0	\$0	\$0	\$0	\$0	\$0	
7.0	ROW/Easement Services	0	0	0	0	0	0	0	0	0	0	0	0	0	\$0	\$0	\$0	\$0	\$0	\$0	\$0	
8.0	Survey Services	0	0	0	0	0	0	0	0	0	0	0	0	0	\$0	\$0	\$0	\$0	\$0	\$0	\$0	
9.0	Permitting	0	0	0	0	0	0	0	0	0	0	0	0	0	\$0	\$0	\$0	\$0	\$0	\$0	\$0	
10	PLAN SUBMITTAL CHECKLISTS (30%, 60%, 90%)													0	\$0					\$0	\$0	
11	QUALITY CONTROL/QUALITY ASSURANCE													0	\$0					\$0	\$0	
<b>Totals</b>		<b>10</b>	<b>0</b>	<b>10</b>	<b>2.00</b>	<b>4.00</b>	<b>12.00</b>	<b>0.00</b>	<b>12.00</b>	<b>0.00</b>	<b>0.00</b>	<b>0.00</b>	<b>4.00</b>	<b>0.00</b>	<b>54.00</b>	<b>\$6,049.34</b>	<b>\$0</b>	<b>\$0</b>	<b>\$0</b>	<b>\$0</b>	<b>\$20,875.00</b>	<b>\$26,924.34</b>

Level of Effort Spreadsheet Notes: This fee is equally split between each intersection.

Project Summary	
Total Hours	54
Total Labor	\$6,049.34
Total Expense	\$20,875.00
Subconsultant	\$0.00
Traffic	\$0.00
0% Sub Markup	\$0.00
<b>Total Project Cost</b>	<b>\$26,924.34</b>



Exhibit 3 - PSSA #3 Fee Distribution by Intersection, and Total for Both Intersections

Pflugerville Parkway Fee

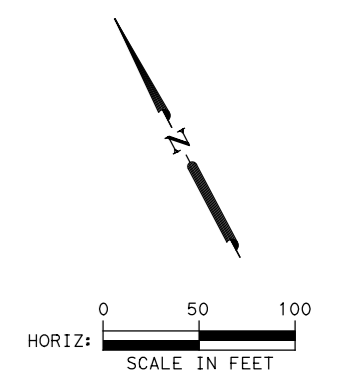
Firm	Total Cost	Percent Participation
Peloton	\$0.00	0.00%
TRG	\$13,462.17	11.36%
RABA	\$0.00	0.00%
Total Sub	<b>\$13,462.17</b>	11.36%
BMCD	\$105,058.35	88.64%
Total	<b>\$118,520.52</b>	100.00%

Copper Mine Fee

Firm	Total Cost	Percent Participation
Peloton	\$0.00	0.00%
TRG	\$13,462.17	15.69%
RABA	\$0.00	0.00%
Total Sub	<b>\$13,462.17</b>	15.69%
BMCD	\$72,330.70	84.31%
Total	<b>\$85,792.87</b>	100.00%

Intersections II PSSA #3 Total

Firm	Total Cost
Peloton	\$0.00
TRG	\$26,924.34
RABA	\$0.00
Total Sub	<b>\$26,924.34</b>
BMCD	\$177,389.05
Total	<b>\$204,313.39</b>



**LEGEND**  
 - - - ROW RIGHT OF WAY  
 PROPOSED ROADWAY PAVEMENT  
 PROPOSED SLIP/SIDEWALK  
 → TRAFFIC DIRECTION

DATE: 01/27/2021  
 DRAWN: J. MCDONNELL  
 CHECKED: M. MCDONNELL  
 FILE: PFLUG\_P17-045

NO.	DATE	REVISION	APPROVED

**BURNS MEDONNELL**  
 8911 N CAPITAL OF TX HWY  
 BUILDING 3, SUITE 3100  
 AUSTIN, TX 78759  
 ENGINEERING FIRM F-045

**PFLUGERVILLE TEXAS**  
 where quality meets life

**PFLUGERVILLE PKWY  
 EXHIBIT 4**

SHEET 1 OF 1

DESIGN	BMD	FEDERAL AID PROJECT NO.			HIGHWAY NO.	
DRAWN	BMD	\$PROJECT NO\$			\$HW\$	
CHECK	BMD	STATE	TEXAS	DISTRICT	COUNTY	SHEET NO.
CHECK	BMD	\$COUNTY\$		\$DIST\$		
		CONTROL		SECTION	JOB	
		\$SECT\$		\$JOB\$		