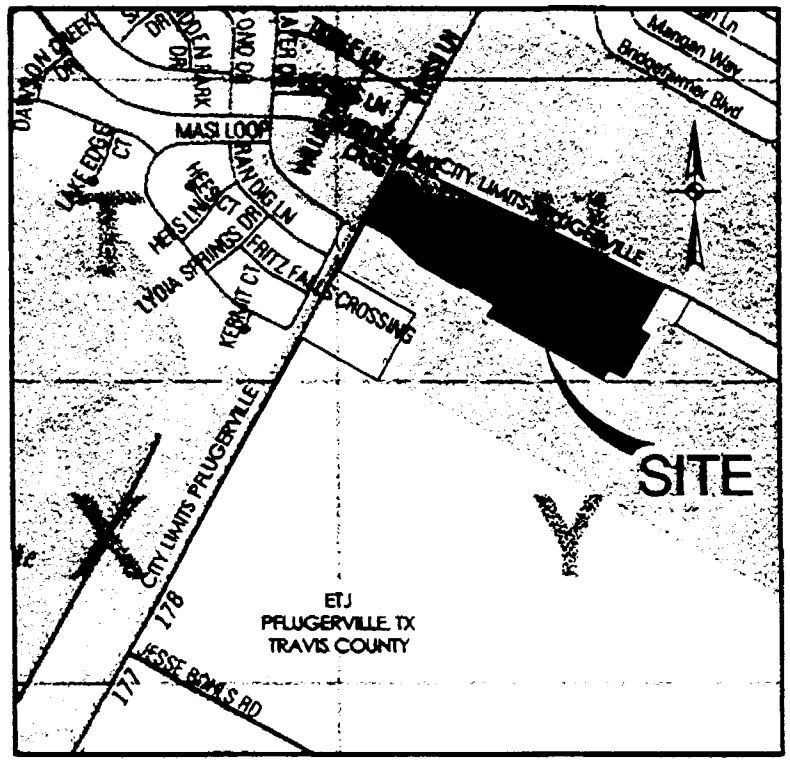


201400017



LOCATION MAP
NOT-TO-SCALE
MAPSCO MAP GRID: 439 U

FINAL PLAT
OF
SORENTO PHASE 1

A 29.103 ACRES, OR 1,267,705 SQUARE FEET, MORE OR LESS, TRACT OF LAND BEING A PORTION OF THAT CERTAIN CALLED 119.023 ACRE TRACT OF LAND CONVEYED TO SORNETO HOLDINGS 2012 LLC IN DOCUMENT No. 2012164042 OF THE OFFICIAL PUBLIC RECORDS OF TRAVIS COUNTY, TEXAS, SITUATED IN THE JOHN C. BRAY SURVEY No. 10, ABSTRACT No. 73, TRAVIS COUNTY, TEXAS.

**TRAVIS COUNTY CONSUMER PROTECTION
NOTICE FOR HOMEBUYERS**

IF YOU ARE BUYING A LOT OR HOME, YOU SHOULD DETERMINE WHETHER IT IS INSIDE OR OUTSIDE THE CITY LIMITS.

DEPENDING ON STATE LAW AND OTHER FACTORS, LAND OUTSIDE THE CITY LIMITS MAY BE SUBJECT TO FEWER LOCAL GOVERNMENT CONTROLS OVER THE DEVELOPMENT AND USE OF LAND THAN INSIDE THE CITY LIMITS.

BECAUSE OF THIS, LOCAL GOVERNMENT MAY NOT BE ABLE TO RESTRICT THE NATURE OR EXTENT OF DEVELOPMENT NEAR THE LOT OR HOME NOR PROHIBIT NEARBY LAND USES THAT ARE INCOMPATIBLE WITH A RESIDENTIAL NEIGHBORHOOD.

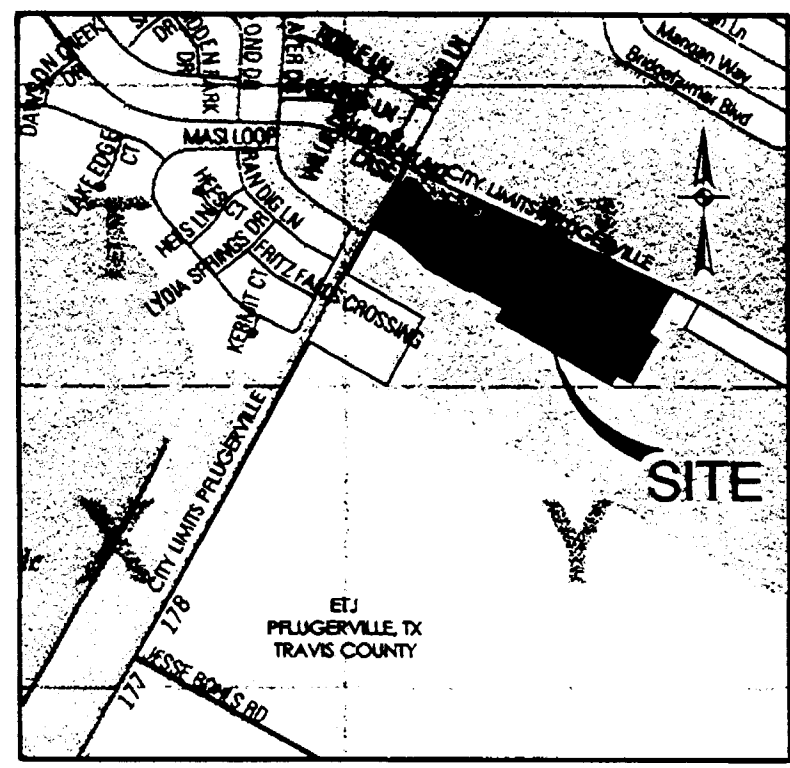
THIS CAN AFFECT THE VALUE OF YOUR PROPERTY. TRAVIS COUNTY REQUIRES THIS NOTICE TO BE PLACED ON SUBDIVISION PLATS. IT IS NOT A STATEMENT OR REPRESENTATION OF THE OWNER OF THE PROPERTY, THE SUBDIVIDER, OR THEIR REPRESENTATIVES.



7800 SHOAL CREEK BLVD | AUSTIN TEXAS 78757 | PHONE: 512.454.8711
SUITE 220 WEST | FAX: 512.458.8867

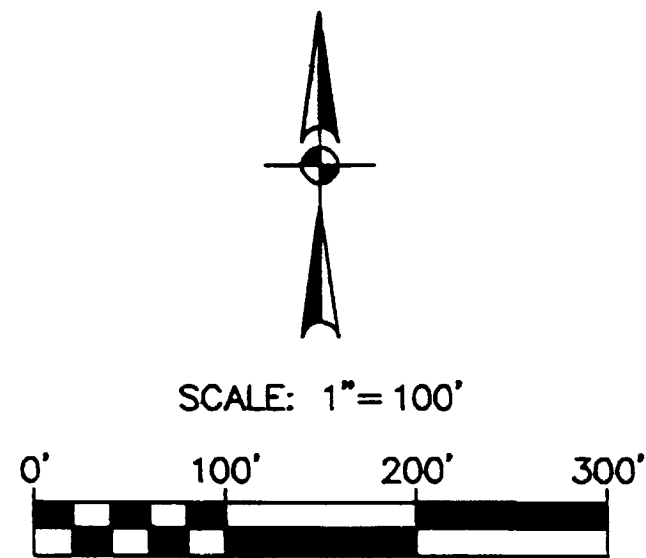
TEXAS BOARD OF PROFESSIONAL ENGINEERS, FIRM REGISTRATION #419
TEXAS BOARD OF PROFESSIONAL LAND SURVEYORS, FIRM REGISTRATION # 18888-02

201400017



LOCATION MAP

NOT TO SCALE
MAPSCO MAP GRID: 439 U



FINAL PLAT OF SORENTO PHASE 1

A 29.103 ACRES, OR 1,247,705 SQUARE FEET, MORE OR LESS, TRACT OF LAND BEING A PORTION OF THAT CERTAIN CALLED 119.023 ACRE TRACT OF LAND CONVEYED TO SORENTO HOLDINGS 2012 LLC IN DOCUMENT No. 2012164042 OF THE OFFICIAL PUBLIC RECORDS OF TRAVIS COUNTY, TEXAS, SITUATED IN THE JOHN C. BRAY SURVEY No. 10, ABSTRACT No. 73, TRAVIS COUNTY, TEXAS.

LEGEND	
⊙	FOUND 1/2" IRON ROD (UNLESS NOTED OTHERWISE)
⊙ (SURVEYOR)	FOUND 1/2" IRON ROD WITH CAP
●	PROPERTY LINE ANGLE POINT OR POINT OF CURVATURE
⊠	FOUND TxDOT MONUMENTATION
Ⓐ	BLOCK LETTER
WWE	WASTEWATER EASEMENT
PUE	PUBLIC UTILITY EASEMENT
ROW	RIGHT-OF-WAY
OPR	OFFICIAL PUBLIC RECORDS
DR	DEED RECORDS
.....	SIDEWALK
DRNG	DRAINAGE
FP	FLOODPLAIN
—	CITY LIMITS/ETJ (EXTRA TERRITORIAL JURISDICTION)
— W —	WATERLINE

OWNER/SUBDIVIDER:	ENGINEER:	SURVEYOR:
SORENTO HOLDINGS 2012 LLC 3 SAN JOAQUIN PLAZA, SUITE 100 NEW PORT BEACH, CA 92660	PAPE-DAWSON ENGINEERS, INC. 7800 SHOAL CREEK BLVD. SUITE 220 WEST AUSTIN, TEXAS 78757 (512) 454-8711	PAPE-DAWSON ENGINEERS, INC. 7800 SHOAL CREEK BLVD. SUITE 220 WEST AUSTIN, TEXAS 78757 (512) 454-8711

LOT SUMMARY:

TOTAL LOT ACREAGE:	16.851 ACRES
TOTAL SUBDIVISION ACREAGE:	29.103 ACRES
TOTAL STREET ACREAGE:	6.785 ACRES
ADDITIONAL RIGHT-OF-WAY DEDICATION:	0.325 ACRES
TOTAL NUMBER OF BLOCKS:	7
TOTAL NUMBER OF RESIDENTIAL LOTS:	97
TOTAL NUMBER OF PUBLIC PARKLAND LOTS:	1 - 1.064 ACRES
TOTAL NUMBER OF PUBLIC PARKLAND & DRAINAGE LOTS:	1 - 2.841 ACRES
TOTAL NUMBER OF PRIVATE LANDSCAPE & DRAINAGE LOTS:	1 - 1.237 ACRES

BEARINGS ARE BASED ON THE NORTH AMERICAN DATUM OF 1983 (CORDS 1996), FROM THE TEXAS COORDINATE SYSTEM ESTABLISHED FOR THE CENTRAL ZONE.

COMBINED SCALE FACTOR:
0.999960016

BENCHMARK:
PT #11 1/2" IRON ROD W/ RED CAP
NAD 83 GRID COORDINATES
N: 10137227.521, E: 3169834.368
ELEVATION OF 629.61' (NAVD 88)
GEOID 03

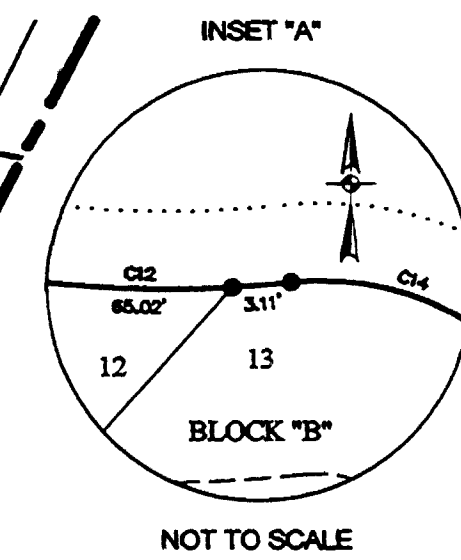
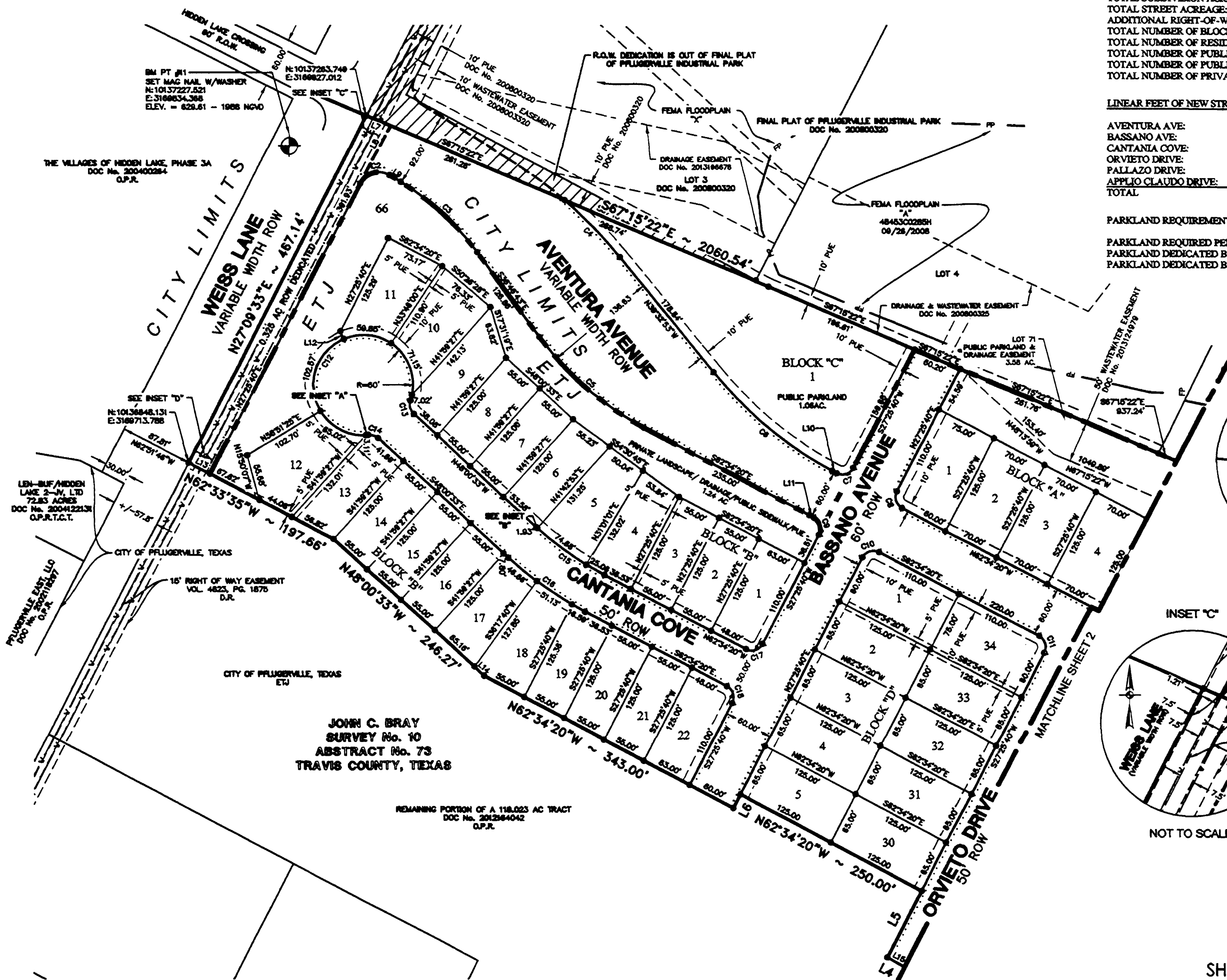
BENCHMARK:
PT #12 1/2" IRON ROD W/ RED CAP
NAD 83 GRID COORDINATES
N: 10136202.472, E: 3171823.547
ELEVATION OF 615.46' (NAVD 88)
GEOID 03

LINEAR FEET OF NEW STREET:

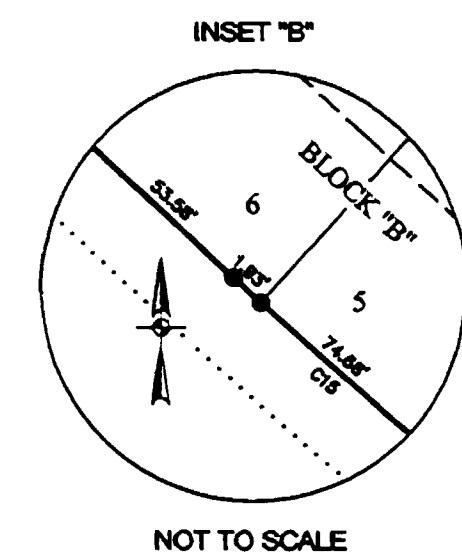
AVENTURA AVE:	1967 LF
BASSANO AVE:	591 LF
CANTANIA COVE:	628 LF
ORVIETO DRIVE:	455 LF
PALLAZO DRIVE:	839 LF
APPLIO CLAUDIO DRIVE:	455 LF
TOTAL:	4953 LF

PARKLAND REQUIREMENT:

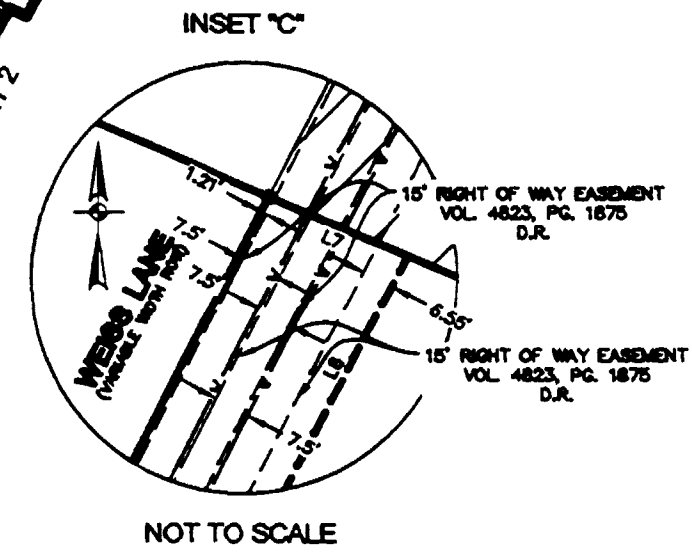
PARKLAND REQUIRED PER PRELIMINARY PLAN:	28.9 ACRES
PARKLAND DEDICATED BY PRIOR RECORDED PLATS:	0.0 ACRES
PARKLAND DEDICATED BY THIS PLAT:	3.905 ACRES



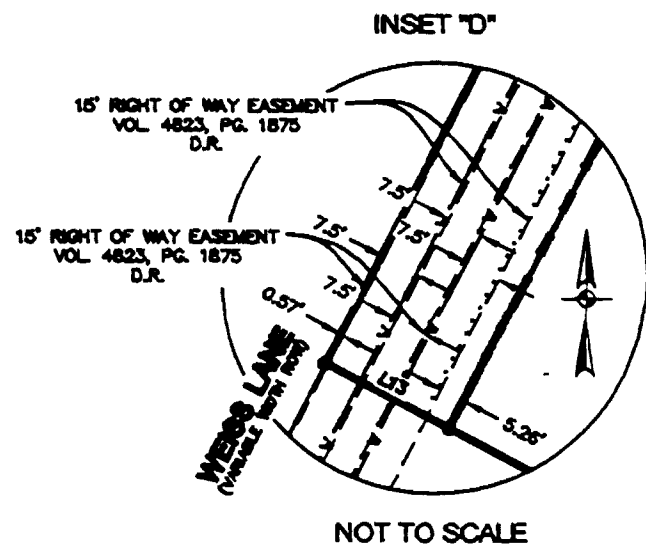
NOT TO SCALE



NOT TO SCALE



NOT TO SCALE



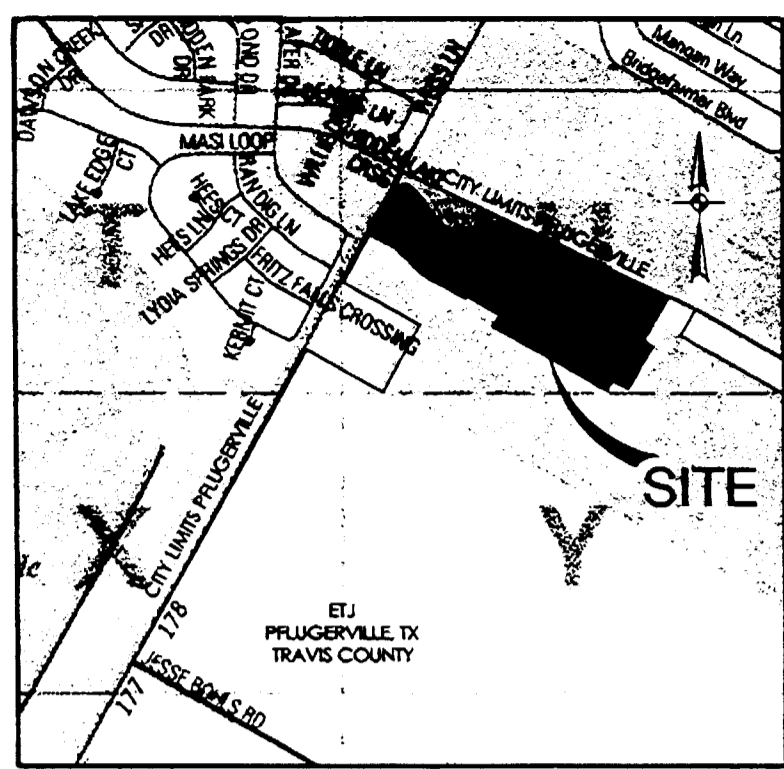
NOT TO SCALE

PAPE-DAWSON ENGINEERS

7800 SHOAL CREEK BLVD | AUSTIN TEXAS 78757 | PHONE: 512.454.8711
SUITE 220 WEST | FAX: 512.454.8857

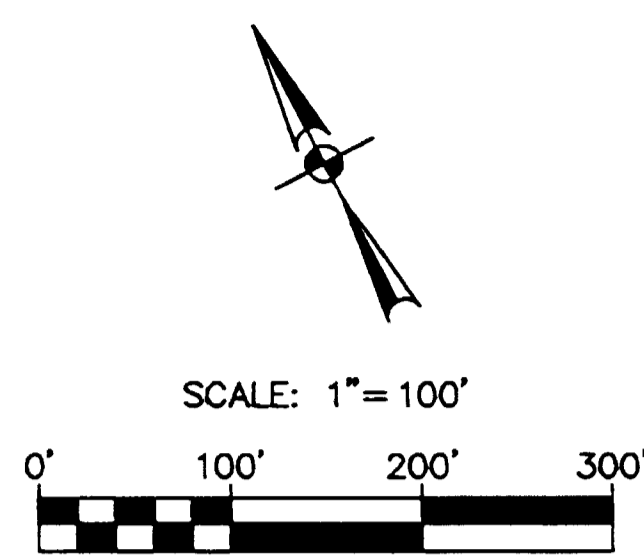
SUBDIVISION PLAT OF SORENTO PHASE 1

201400017



LOCATION MAP

NOT-TO-SCALE
MAPSCO MAP GRID: 439 U

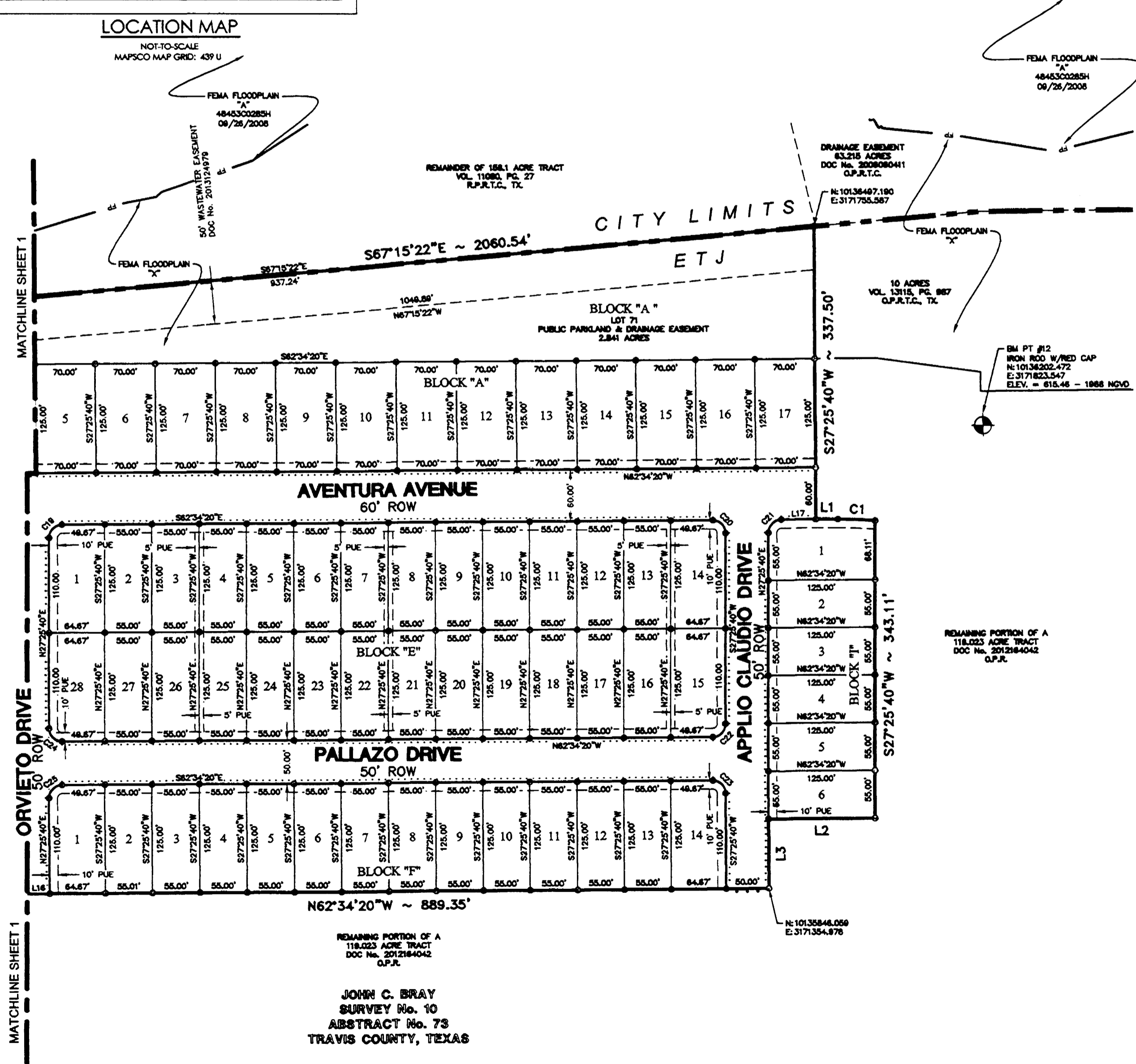


FINAL PLAT
OF
SORENTO PHASE 1

A 29.103 ACRES, OR 1,267,705 SQUARE FEET, MORE OR LESS, TRACT OF LAND BEING A PORTION OF THAT CERTAIN CALLED 119.023 ACRE TRACT OF LAND CONVEYED TO SORENTO HOLDINGS 2012 LLC IN DOCUMENT No. 2012164042 OF THE OFFICIAL PUBLIC RECORDS OF TRAVIS COUNTY, TEXAS, SITUATED IN THE JOHN C. BRAY SURVEY No. 10, ABSTRACT No. 73, TRAVIS COUNTY, TEXAS.

LEGEND

- ⊙ FOUND 1/2" IRON ROD (UNLESS NOTED OTHERWISE)
- (SURVEYOR) ⊙ FOUND 1/2" IRON ROD WITH CAP
- PROPERTY LINE ANGLE POINT OR POINT OF CURVATURE
- ⊠ FOUND TxDOT MONUMENTATION
- Ⓐ BLOCK LETTER
- WWE WASTEWATER EASEMENT
- PUE PUBLIC UTILITY EASEMENT
- ROW RIGHT-OF-WAY
- OPR OFFICIAL PUBLIC RECORDS
- DR DEED RECORDS
- SIDEWALK
- DRNG DRAINAGE
- FP - FLOODPLAIN
- - - - CITY LIMITS/ETJ (EXTRA TERRITORIAL JURISDICTION)
- W - WATERLINE



CURVE TABLE

CURVE #	RADIUS	DELTA	CHORD BEARING	CHORD	LENGTH
C1	500.00'	004°56'18"	S60°04'41"E	43.52'	43.53'
C2	25.00'	063°53'56"	N74°22'38"E	36.54'	40.97'
C3	326.50'	021°53'41"	S47°43'33"E	124.01'	124.77'
C4	545.00'	010°03'55"	N44°34'50"W	95.62'	95.74'
C5	373.50'	025°47'37"	S49°40'31"E	166.73'	168.14'
C6	470.00'	023°01'27"	N51°03'36"W	187.60'	188.87'
C7	15.00'	090°00'00"	S72°25'40"W	21.21'	23.56'
C8	15.00'	090°00'00"	N17°34'20"W	21.21'	23.56'
C9	15.00'	090°00'00"	S17°34'20"E	21.21'	23.56'
C10	15.00'	090°00'00"	N72°25'40"E	21.21'	23.56'
C11	15.00'	090°00'00"	S17°34'20"E	21.21'	23.56'
C12	60.00'	294°36'41"	S51°06'25"W	64.82'	308.52'
C13	15.00'	066°25'19"	N14°47'54"W	16.43'	17.39'
C14	15.00'	048°11'23"	S72°06'14"E	12.25'	12.62'
C15	400.00'	014°33'47"	N55°17'26"W	101.40'	101.67'
C16	450.00'	014°33'47"	S55°17'26"E	114.07'	114.38'
C17	15.00'	090°00'00"	S72°25'40"W	21.21'	23.56'
C18	15.00'	090°00'00"	S17°34'20"E	21.21'	23.56'
C19	15.00'	090°00'00"	N72°25'40"E	21.21'	23.56'
C20	15.00'	090°00'00"	S17°34'20"E	21.21'	23.56'
C21	15.00'	090°00'00"	N72°25'40"E	21.21'	23.56'
C22	15.00'	090°00'00"	S72°25'40"W	21.21'	23.56'
C23	15.00'	090°00'00"	S17°34'20"E	21.21'	23.56'
C24	15.00'	090°00'00"	N17°34'20"W	21.21'	23.56'
C25	15.00'	090°00'00"	N72°25'40"E	21.21'	23.56'

LINE TABLE

LINE #	LENGTH	BEARING
L1	25.88'	S62°34'20"E
L2	125.00'	N62°34'20"W
L3	80.00'	S27°25'40"W
L4	889.35'	N62°34'20"W
L5	90.00'	N27°25'40"E
L6	18.51'	S27°25'40"W
L7	31.42'	S67°15'22"E
L8	77.78'	S27°25'40"W
L9	16.61'	S58°40'24"E
L10	6.44'	N62°34'20"W
L11	6.44'	S62°34'20"E
L12	10.25'	N23°11'47"W
L13	29.13'	N62°33'35"W
L14	16.11'	N48°00'33"W
L15	25.00'	N62°34'20"W
L16	25.00'	N62°34'20"W
L17	40.65'	S62°34'20"E

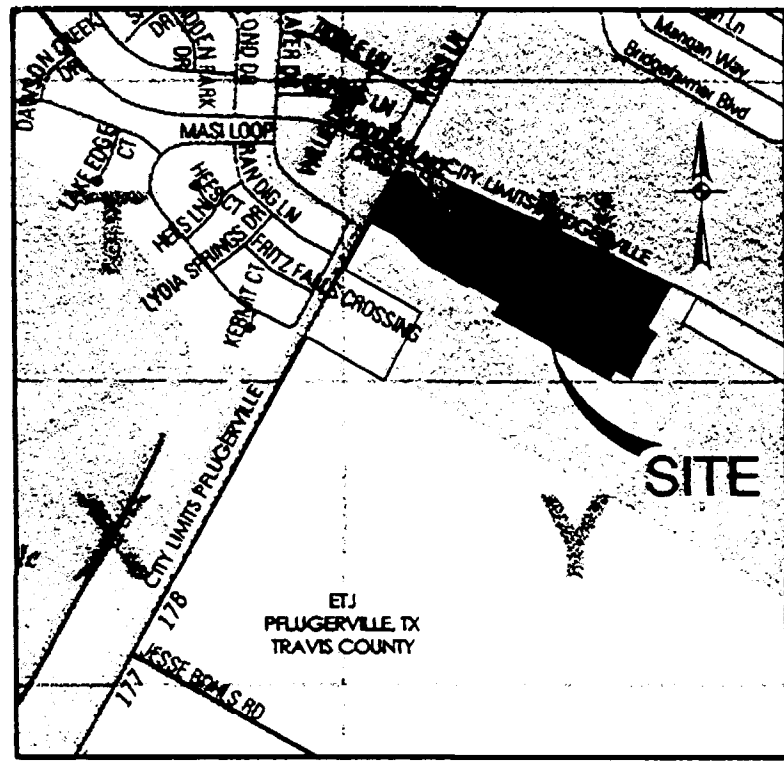
JOHN C. BRAY
SURVEY No. 10
ABSTRACT No. 73
TRAVIS COUNTY, TEXAS

PAPE-DAWSON ENGINEERS

7800 SHOAL CREEK BLVD SUITE 220 WEST | AUSTIN TEXAS 78757 | PHONE: 512.454.8711 FAX: 512.459.8867

SUBDIVISION PLAT OF SORENTO PHASE 1

20140007



LOCATION MAP

NOT-TO-SCALE
MAPSCO MAP GRID: 439 U

FINAL PLAT OF SORENTO PHASE 1

A 29.103 ACRES, OR 1,247,705 SQUARE FEET, MORE OR LESS, TRACT OF LAND BEING A PORTION OF THAT CERTAIN CALLED 119.023 ACRE TRACT OF LAND CONVEYED TO SORNETO HOLDINGS 2012 LLC IN DOCUMENT No. 2012144042 OF THE OFFICIAL PUBLIC RECORDS OF TRAVIS COUNTY, TEXAS, SITUATED IN THE JOHN C. BRAY SURVEY No. 10, ABSTRACT No. 73, TRAVIS COUNTY, TEXAS.

LOT/ACRES SQ.FT.	
BLOCK "A"	
1/0.214	9322 SQ.FT.
2/0.201	8756 SQ.FT.
3/0.201	8756 SQ.FT.
4/0.201	8756 SQ.FT.
5/0.201	8756 SQ.FT.
6/0.201	8756 SQ.FT.
7/0.201	8756 SQ.FT.
8/0.201	8756 SQ.FT.
9/0.201	8756 SQ.FT.
10/0.201	8756 SQ.FT.
11/0.201	8756 SQ.FT.
12/0.201	8756 SQ.FT.
13/0.201	8756 SQ.FT.
14/0.201	8756 SQ.FT.
15/0.201	8756 SQ.FT.
16/0.201	8756 SQ.FT.
17/0.201	8756 SQ.FT.
71/3.580	155845 SQ.FT.

LOT/ACRES SQ.FT.	
BLOCK "B"	
1/0.180	7841 SQ.FT.
2/0.158	6883 SQ.FT.
3/0.158	6883 SQ.FT.
4/0.158	6883 SQ.FT.
5/0.190	8277 SQ.FT.
6/0.162	7057 SQ.FT.
7/0.158	6883 SQ.FT.
8/0.158	6883 SQ.FT.
9/0.177	7711 SQ.FT.
10/0.185	8059 SQ.FT.
11/0.180	7841 SQ.FT.
12/0.211	9192 SQ.FT.
13/0.166	7231 SQ.FT.
14/0.158	6883 SQ.FT.
15/0.158	6883 SQ.FT.
16/0.158	6883 SQ.FT.
17/0.170	7406 SQ.FT.
18/0.179	7796 SQ.FT.
19/0.158	6883 SQ.FT.
20/0.158	6883 SQ.FT.
21/0.158	6883 SQ.FT.
22/0.180	7841 SQ.FT.
66/1.230	53579 SQ.FT.

LOT/ACRES SQ.FT.	
BLOCK "C"	
1/1.064	46348 SQ.FT.

LOT/ACRES SQ.FT.	
BLOCK "D"	
1/0.214	9322 SQ.FT.
2/0.187	8146 SQ.FT.
3/0.187	8146 SQ.FT.
4/0.187	8146 SQ.FT.
5/0.187	8146 SQ.FT.
30/0.187	8146 SQ.FT.
31/0.187	8146 SQ.FT.
32/0.187	8146 SQ.FT.
33/0.187	8146 SQ.FT.
34/0.214	9322 SQ.FT.

LOT/ACRES SQ.FT.	
BLOCK "E"	
1/0.185	8059 SQ.FT.
2/0.158	6883 SQ.FT.
3/0.158	6883 SQ.FT.
4/0.158	6883 SQ.FT.
5/0.158	6883 SQ.FT.
6/0.158	6883 SQ.FT.
7/0.158	6883 SQ.FT.
8/0.158	6883 SQ.FT.
9/0.158	6883 SQ.FT.
10/0.158	6883 SQ.FT.
11/0.158	6883 SQ.FT.
12/0.158	6883 SQ.FT.
13/0.158	6883 SQ.FT.
14/0.158	6883 SQ.FT.
15/0.185	8059 SQ.FT.
16/0.158	6883 SQ.FT.
17/0.158	6883 SQ.FT.
18/0.158	6883 SQ.FT.
19/0.158	6883 SQ.FT.
20/0.158	6883 SQ.FT.
21/0.158	6883 SQ.FT.
22/0.158	6883 SQ.FT.
23/0.158	6883 SQ.FT.
24/0.158	6883 SQ.FT.
25/0.158	6883 SQ.FT.
26/0.158	6883 SQ.FT.
27/0.158	6883 SQ.FT.
28/0.185	8059 SQ.FT.

LOT/ACRES SQ.FT.	
BLOCK "F"	
1/0.185	8059 SQ.FT.
2/0.158	6883 SQ.FT.
3/0.158	6883 SQ.FT.
4/0.158	6883 SQ.FT.
5/0.158	6883 SQ.FT.
6/0.158	6883 SQ.FT.
7/0.158	6883 SQ.FT.
8/0.158	6883 SQ.FT.
9/0.158	6883 SQ.FT.
10/0.158	6883 SQ.FT.
11/0.158	6883 SQ.FT.
12/0.158	6883 SQ.FT.
13/0.158	6883 SQ.FT.
14/0.185	8059 SQ.FT.

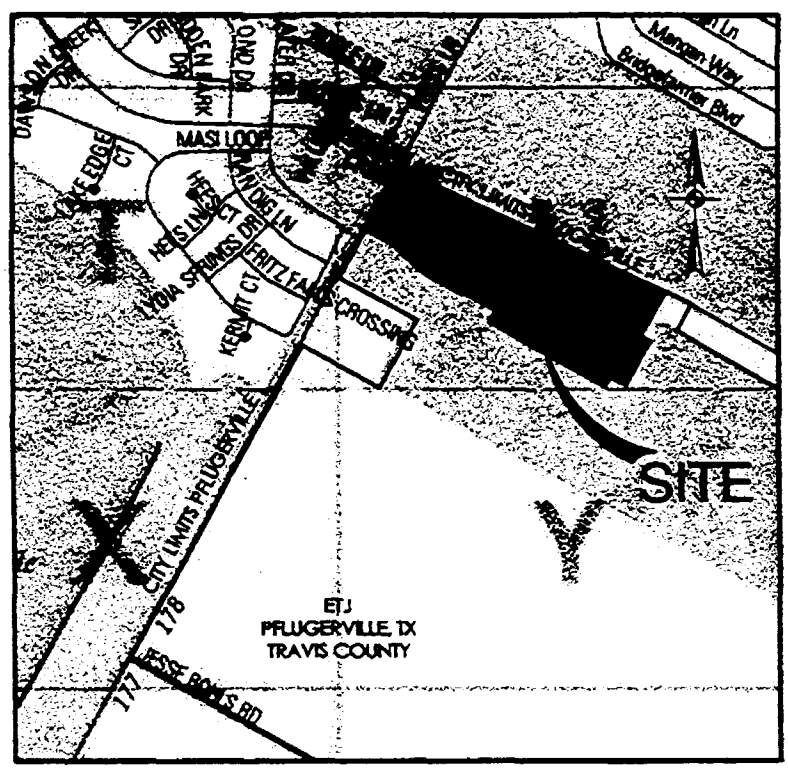
LOT/ACRES SQ.FT.	
BLOCK "G"	
1/0.199	8569 SQ.FT.
2/0.158	6883 SQ.FT.
3/0.158	6883 SQ.FT.
4/0.158	6883 SQ.FT.
5/0.158	6883 SQ.FT.
6/0.158	6883 SQ.FT.



7800 SHOAL CREEK BLVD | SUITE 230 WEST | AUSTIN TEXAS 78757 | PHONE: 512.454.8711 | FAX: 512.458.8867

TEKSA BOARD OF PROFESSIONAL ENGINEERS, P.E.M. REGISTRATION # 490
TEKSA BOARD OF PROFESSIONAL LAND SURVEYORS, P.L.S. REGISTRATION # 8888-40

201400017



LOCATION MAP

NOT-TO-SCALE
MAPSCO MAP GRID: 439 U

NOTES:

- 1. THIS PLAT LIES WITHIN THE CITY OF PFLUGERVILLE ETI.
2. NO STRUCTURE IN THIS SUBDIVISION SHALL BE OCCUPIED UNTIL CONNECTED TO AN APPROVED SEWER SYSTEM...
3. ALL STREETS IN THIS SUBDIVISION SHALL BE CONSTRUCTED WITH CONCRETE CURB AND GUTTER.
4. A TRAVIS COUNTY DEVELOPMENT PERMIT IS REQUIRED PRIOR TO ANY SITE DEVELOPMENT.
5. NO DRIVEWAY SHALL BE CONSTRUCTED CLOSER THAN 50 FEET TO THE EDGE OF PAVEMENT OF AN INTERSECTING LOCAL OR COLLECTOR STREET...
6. SIDEWALKS SHALL BE CONSTRUCTED ALONG EACH SIDE OF ALL STREETS IN THIS SUBDIVISION...
7. THIS SUBDIVISION AND THE HOME OWNERS ASSOCIATION IS SUBJECT TO THE CONDITIONS, COVENANTS AND RESTRICTIONS RECORDED IN DOCUMENT NO. 201201182...
8. WATER AND WASTE WATER SERVICE WILL PROVIDED BY THE CITY OF PFLUGERVILLE.
9. THE OWNER/SUBDIVIDER, AS LISTED ON THIS PLAT, SHALL BE RESPONSIBLE FOR POSTING FISCAL SURETY FOR THE CONSTRUCTION OF ALL CONCRETE SIDEWALKS...
10. THIS SUBDIVISION IS LOCATED WITHIN THE BOUNDARIES OF THE MUD No. 17...
11. NO OBJECTS, INCLUDING, BUT NOT LIMITED TO BUILDINGS, FENCES, OR LANDSCAPING SHALL BE ALLOWED IN A DRAINAGE EASEMENT...
12. THE PROPERTY OWNER OR HIS / HER ASSIGNS SHALL PROVIDE FOR ACCESS TO THE DRAINAGE EASEMENT AS MAY BE NECESSARY...
13. ALL DRAINAGE EASEMENTS ON PRIVATE PROPERTY SHALL BE MAINTAINED BY THE OWNER OR HIS / HER ASSIGNS.
14. WITHIN A SIGHT LINE EASEMENT, ANY OBSTRUCTION OF SIGHT LINE BY VEGETATION, FENCING, EARTHWORK, BUILDINGS, SIGNS, OR ANY OTHER OBJECT WHICH IS DETERMINED TO CAUSE A TRAFFIC HAZARD IS PROHIBITED...

- 15. COMMUNITY IMPACT FEES FOR INDIVIDUAL LOTS SHALL BE PAID PRIOR TO ISSUANCE OF ANY BUILDING PERMITS...
16. CONSTRUCTION PLANS AND SPECIFICATIONS FOR ALL SUBDIVISION IMPROVEMENTS SHALL BE REVIEWED AND APPROVED BY THE CITY OF PFLUGERVILLE...
17. ON-SITE STORM WATER DETENTION IS NOT REQUIRED FOR THIS PROJECT...
18. STREETLIGHTS SHALL BE INSTALLED AND OPERATIONAL BY THE SUBDIVIDER WITH PUBLIC IMPROVEMENTS PER ALL CITY OF PFLUGERVILLE STANDARDS...
19. ALL ELECTRIC UTILITY INFRASTRUCTURE INCLUDING BUT NOT LIMITED TO TELEPHONE, CABLE TELEVISION, ELECTRIC UTILITY LATERAL AND SERVICE LINES SHALL BE INSTALLED IN ACCORDANCE WITH THE CITY OF PFLUGERVILLE ENGINEERING DESIGN GUIDELINES.
20. A 10-FT. PUE SHALL BE DEDICATED ALONG ALL STREET FRONTAGE.
21. THIS SUBDIVISION IS SUBJECT TO ALL CITY OF PFLUGERVILLE ORDINANCES RELATED TO TREE PRESERVATION.
22. PUBLIC PARKLAND SHALL BE OWNED AND MAINTAINED BY TRAVIS COUNTY M.U.D. #17...
23. THE CENTERLINE OF WEISS LANE (A.K.A. MANOR-HUTTO ROAD) AS DESCRIBED IN TRAVIS COUNTY COMMISSIONERS COURT ROAD BOOK 2, PAGES 294-297 HAS NO DEFINED WIDTH...
24. THE DEVELOPMENT IS SUBJECT TO TERMS AND CONDITIONS OF THE 'DEVELOPMENT AGREEMENT FOR WILDFLOWER AND CACTUS', THE 'FIRST AMENDMENT TO THE DEVELOPMENT AGREEMENT', THE 'SECOND AMENDMENT TO THE DEVELOPMENT AGREEMENT REGARDING BOHLS NORTH AND PCDC TRACTS', THE 'THIRD AMENDMENT TO THE DEVELOPMENT AGREEMENT REGARDING BOHLS NORTH AND PCDC TRACTS', THE SORENTO REGULATING PLAN, AND THE 'SORENTO PHASING AGREEMENT.'
25. ALL RESIDENTIAL AND COMMERCIAL CONSTRUCTION WITHIN THE PROPERTY SHALL BE SUBJECT TO THE BUILDING AND CONSTRUCTION CODES OF THE CITY OF PFLUGERVILLE, AS AMENDED...

STATE OF TEXAS: KNOWN ALL MEN BY THESE PRESENTS
COUNTY OF TRAVIS:

THAT, SORENTO HOLDINGS 2012 LLC, BEING THE OWNER OF 119.023 ACRES OF LAND OUT OF THE JOHN C. BRAY SURVEY No. 10, ABSTRACT No. 73 IN TRAVIS COUNTY, TEXAS, SAME BEING CONVEYED BY DEED OF RECORD IN DOC No. 2012164042...

WITNESS MY HAND, THIS THE 26 DAY OF Nov, 2013, AD

THOMAS J. KELLY
3 SAN JOAQUIN PLAZA, SUITE 100
NEW PORT BEACH, CA 92660

FINAL PLAT
OF
SORENTO PHASE 1

A 29.103 ACRES, OR 1,267,705 SQUARE FEET, MORE OR LESS, TRACT OF LAND BEING A PORTION OF THAT CERTAIN CALLED 119.023 ACRE TRACT OF LAND CONVEYED TO SORNETO HOLDINGS 2012 LLC IN DOCUMENT No. 2012164042...

ACKNOWLEDGEMENT:
STATE OF TEXAS
COUNTY OF TRAVIS

BEFORE ME, THE UNDERSIGNED AUTHORITY, ON THIS DAY PERSONALLY APPEARED THOMAS J. KELLY, KNOWN TO ME TO BE THE PERSON WHOSE NAME IS SUBSCRIBED TO THE FOREGOING INSTRUMENT, AND ACKNOWLEDGED TO ME THAT HE EXECUTED THE SAME FOR THE PURPOSES AND CONSIDERATION THEREIN EXPRESSED.

GIVEN UNDER MY HAND AND SEAL OF OFFICE THIS 26 DAY OF Nov, 2013.

Mary Helen Tello
NOTARY PUBLIC, STATE OF TEXAS
MARY HELEN TELLO
NOTARY PUBLIC
State of Texas
Comm. Exp. 08/14/2016

CITY CERTIFICATION:
APPROVED THIS 6th DAY OF January, 2014, BY THE PLANNING AND ZONING COMMISSION OF THE CITY OF PFLUGERVILLE, TEXAS, ON BEHALF OF THE CITY.
BY: Rodney Blackburn
CHAIRMAN RODNEY BLACKBURN

THIS PLAT REFLECTS THE APPROVAL GRANTED BY THE PLANNING AND ZONING COMMISSION ON THE DATE INDICATED ABOVE.

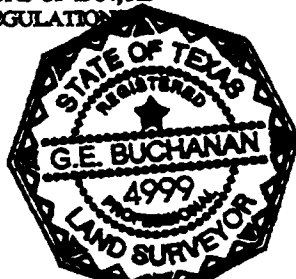
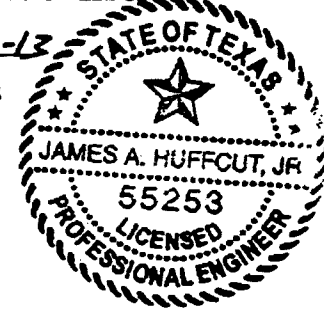
BY: Emily Barron
EMILY BARRON, PLANNING DIRECTOR
KAREN THOMPSON, CITY SECRETARY

ENGINEER'S CERTIFICATION:
THE 100-YEAR FLOOD PLAIN IS CONTAINED WITHIN THE DRAINAGE EASEMENT AS SHOWN HEREBON. NO PORTION OF THIS TRACT IS WITHIN THE DESIGNATED FLOOD HAZARD AREA AS SHOWN ON THE FEDERAL EMERGENCY MANAGEMENT AGENCY (FEMA) FLOOD INSURANCE RATE MAP FIRM #48453-0225H, TRAVIS COUNTY, TEXAS DATED SEPTEMBER 26, 2008

JAMES A. HUFFCUT, JR., AM AUTHORIZED UNDER THE LAWS OF THE STATE OF TEXAS TO PRACTICE THE PROFESSION OF ENGINEERING, AND HEREBY CERTIFY THAT THIS PLAT IS FEASIBLE FROM AN ENGINEERING STANDPOINT, AND IS TRUE AND CORRECT TO THE BEST OF MY KNOWLEDGE.
JAMES A. HUFFCUT, JR.
REGISTERED PROFESSIONAL ENGINEER No. 55253
STATE OF TEXAS

SURVEYOR'S CERTIFICATION:
I, G.E. BUCHANAN, AM AUTHORIZED UNDER THE LAWS OF THE STATE OF TEXAS TO PRACTICE THE PROFESSION OF SURVEYING AND HEREBY CERTIFY THAT THE ABOVE SUBDIVISION IS TRUE AND CORRECT; WAS PREPARED FROM AN ACTUAL SURVEY OF THE PROPERTY MADE UNDER MY SUPERVISION ON THE GROUND; THAT ALL BOUNDARY CORNERS, ANGLE POINTS AND POINTS OF CURVATURE AND OTHER POINTS OF REFERENCE HAVE BEEN MARKED ON THE GROUND AS SHOWN HEREBON, AND HEREBY CERTIFY THAT THIS PLAT COMPLIES WITH TRAVIS COUNTY ORDER No. 8596 STANDARDS FOR THE CONSTRUCTION OF STREETS AND DRAINAGE IN SUBDIVISIONS OF 1984, AS AMENDED AND THE CITY OF PFLUGERVILLE RULES AND REGULATIONS.

G.E. BUCHANAN
REGISTERED PROFESSIONAL LAND SURVEYOR No. 4999
STATE OF TEXAS
Surveyed: 02/05/2013



IN APPROVING THIS PLAT, THE COMMISSIONERS COURT OF TRAVIS COUNTY, TEXAS, ASSUMES NO OBLIGATION TO BUILD THE STREETS, ROADS AND OTHER PUBLIC THOROUGHFARES SHOWN ON THIS PLAT OR ANY BRIDGES OR CULVERTS IN CONNECTION THEREWITH...

THE OWNER OF THE SUBDIVISION SHALL CONSTRUCT THE SUBDIVISION'S STREET AND DRAINAGE IMPROVEMENTS (THE 'IMPROVEMENTS') TO COUNTY STANDARDS IN ORDER FOR THE COUNTY TO ACCEPT THE PUBLIC IMPROVEMENTS FOR MAINTENANCE OR TO RELEASE FISCAL SECURITY POSTED TO SECURE PRIVATE IMPROVEMENTS...

THE AUTHORIZATION OF THIS PLAT BY THE COMMISSIONERS COURT FOR FILING OR THE SUBSEQUENT ACCEPTANCE FOR MAINTENANCE BY TRAVIS COUNTY, TEXAS, OF ROADS AND STREETS IN THE SUBDIVISION DOES NOT OBLIGATE THE COUNTY TO INSTALL STREET NAME SIGNS OR ERRECT TRAFFIC CONTROL SIGNS...

THE STATE OF TEXAS
COUNTY OF TRAVIS

I, DANA DEBEAUVOIR, CLERK OF THE COUNTY COURT, OF TRAVIS COUNTY, TEXAS DO HEREBY CERTIFY THAT ON THE 14th DAY OF January 2014 A.D. THE COMMISSIONERS COURT OF TRAVIS COUNTY, TEXAS, PASSED AN ORDER AUTHORIZING THE FILING FOR RECORD OF THIS PLAT AND THAT SAID ORDER WAS DULY ENTERED IN THE MINUTES OF THE SAID COURT.

WITNESS MY HAND AND SEAL OF THE OFFICE OF THE COUNTY CLERK, OF SAID COUNTY, THE 15th DAY OF January 2014 A.D.

DANA DEBEAUVOIR, COUNTY CLERK
TRAVIS COUNTY, TEXAS
BY: Rhonda Parmit
DEPUTY

I, DANA DEBEAUVOIR, CLERK OF THE TRAVIS COUNTY, TEXAS, DO HEREBY CERTIFY THAT THE FOREGOING INSTRUMENT OF WRITING, AND ITS CERTIFICATE OF AUTHENTICATION, WAS FILED FOR RECORD IN MY OFFICE ON THE 16 DAY OF January 14 A.D. AT 2:19 O'CLOCK P.M. AND DULY RECORDED ON THE 16 DAY OF January 2014 A.D. AT 2:19 O'CLOCK P.M. IN DOCUMENT NUMBER 201400017 OF THE OFFICIAL PUBLIC RECORDS OF TRAVIS COUNTY.

WITNESS MY HAND AND SEAL OF OFFICE OF THE COUNTY CLERK, THE 16 DAY OF January, 2014 A.D.

DANA DEBEAUVOIR, COUNTY CLERK
TRAVIS COUNTY, TEXAS
BY: J. Pera
DEPUTY



7800 SHOCK CREEK BLVD SUITE 220 WEST AUSTIN TEXAS 78757 PHONE: 512.458.1171 FAX: 512.458.8867

SUBDIVISION PLAT OF SORENTO PHASE 1