

"PRELIMINARY PLAN ONLY - NOT FOR RECORDATION"

FOR

# FALCON POINTE

## PRELIMINARY PLAN #5B

DATE OF SUBMITTAL: August 2013

PROJECT ADDRESS

OWNER'S/DEVELOPER'S NAME AND ADDRESS

FALCON POINTE BLVD.  
PFLUGERVILLE, TX

TERRABROOK FALCON POINTE, L.P.  
13809 RESEARCH BLVD., SUITE 475  
AUSTIN, TEXAS 78750

SURVEYOR'S NAME AND ADDRESS

McKIM&CREED  
ENGINEERS, SURVEYORS, PLANNERS  
10,000 METRIC BLVD, SUITE 200  
AUSTIN, TEXAS 78758  
PHONE (512) 916-0224

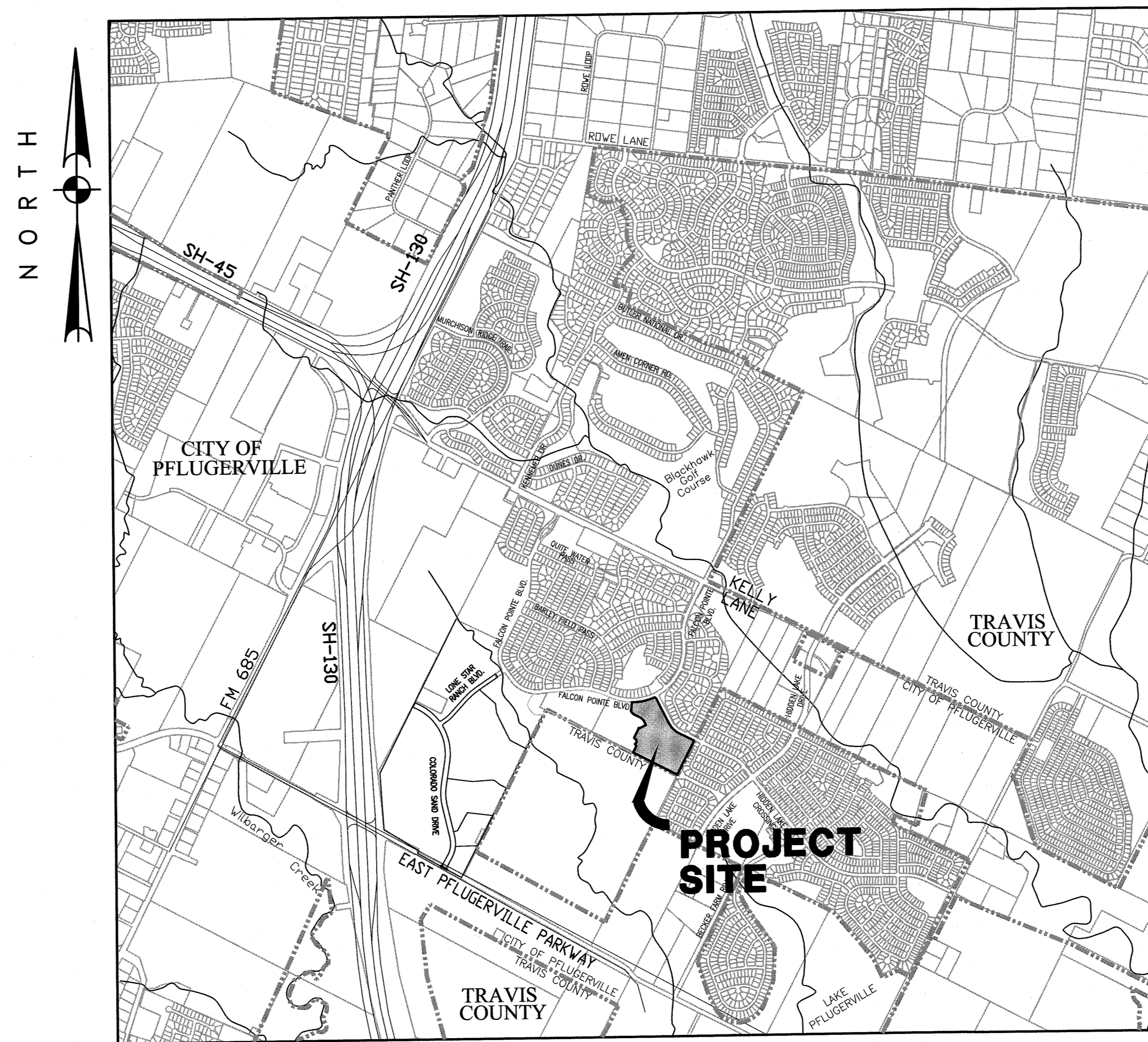
LEGAL DESCRIPTION

20.47 TOTAL ACRES OUT OF 132.06  
ACRES OF THE TERRABROOK FALCON  
POINTE, L.P. A DELAWARE LIMITED  
PARTNERSHIP TRV # 2001671001; AND  
FALCON POINTE SECTION TWELVE  
(PHASE D) TRV# 200500274,  
ALL OF THE OFFICIAL PUBLIC RECORDS  
OF TRAVIS COUNTY, TEXAS.

ZONING: ALUR No.2 AMENDED

INDEX TO SHEETS

| NO. | TITLE                             |
|-----|-----------------------------------|
| 1   | COVER SHEET                       |
| 2   | STANDARD LEGEND AND ABBREVIATIONS |
| 3   | PRELIMINARY PLAN                  |
| 4   | WATER AND WASTEWATER LAYOUT       |
| 5   | DRAINAGE LAYOUT                   |
| 6   | DRAINAGE CALCULATIONS SHEET       |
| 7   | ILLUMINATION PLAN                 |
| 8   | FIRE HYDRANT SERVICE AREA         |



VICINITY MAP  
SCALE: N.T.S.

- RELATED ENGINEERING STUDIES:
- PRELIMINARY ENGINEERING REPORT FOR FALCON POINTE PRELIMINARY PLAN #5A  
AECOM TECHNICAL SERVICES, INC.; JANUARY 2013
  - ENGINEERING DESIGN REPORT FOR FALCON POINTE SECTION 13  
WATER, SEWER, DRAINAGE & PAVING IMPROVEMENTS AECOM TECHNICAL  
SERVICE, INC.; 2013
  - HYDROLOGIC AND HYDRAULIC ANALYSIS FOR FALCON POINTE SECTION 5 & 6  
TURNER, COLLIE & BRADEN INC.; MARCH 2001

RECOMMENDED FOR APPROVAL:

ROGER DURDEN, P.E.  
ASSOCIATE VICE PRESIDENT  
AECOM TECHNICAL SERVICES, INC.

DATE

SURVEYORS CERTIFICATION:

STATE OF TEXAS:

COUNTY OF TRAVIS:

THAT I, \_\_\_\_\_ DO HEREBY CERTIFY THAT I PREPARED THIS PLAN  
FROM AN ACTUAL AND ACCURATE ON-THE-GROUND SURVEY OF THE LAND, AND THAT  
THE CORNER MONUMENTS SHOWN THEREON MARKING THE BOUNDARY OF THE PROPOSED  
SUBDIVISION, BUT NOT INTERIOR LOT LINES, WERE PROPERLY PLACED UNDER MY  
PERSONAL SUPERVISION, IN ACCORDANCE WITH THE SUBDIVISION CODE OF THE CITY OF  
PFLUGERVILLE, TEXAS AND THAT ALL KNOWN EASEMENTS WITHIN THE BOUNDARY OF THE  
PLAN ARE SHOWN HEREON.

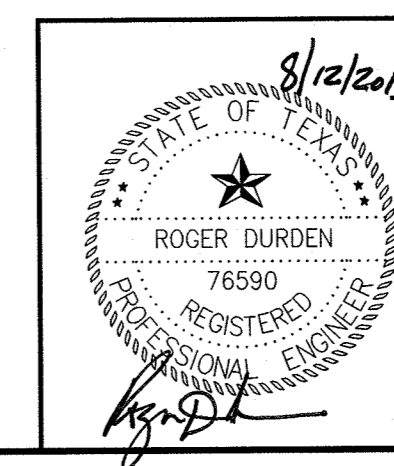
SIGNATURE OF REGISTERED PROFESSIONAL LAND SURVEYOR

**AECOM**

AECOM TECHNICAL SERVICES, INC.  
400 WEST 15TH STREET, SUITE 500  
AUSTIN, TEXAS 78701  
WWW.AECOM.COM  
TBPE REG. NO. F-3580

**Newland**  
COMMUNITIES

AT THE HEART OF GREAT LIVING



| NO. | DATE | REVISION | APPROV. |
|-----|------|----------|---------|
| 4   |      |          |         |
| 3   |      |          |         |
| 2   |      |          |         |

Unit: Austin/LDS Drawn: Sheet: 1 Dwg. No.:

NO PORTION OF THIS TRACT IS LOCATED WITHIN THE BOUNDARIES OF THE 100 YEAR FLOOD HAZARD  
AREA AS INDICATED ON FEDERAL FLOOD INSURANCE ADMINISTRATION, FIRM PANEL NO. 48453C0280H,  
DATED SEPTEMBER 26, 2008 FOR TRAVIS COUNTY, TEXAS.





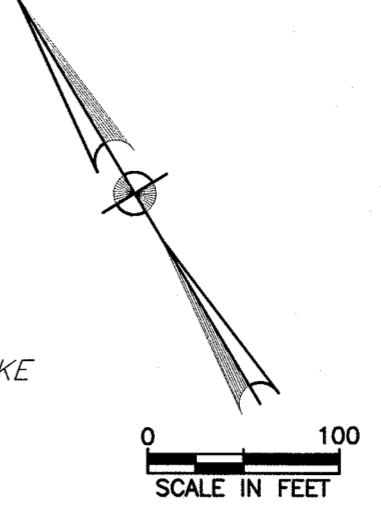


LEGEND

- BLOCK LETTER
15
PRELIMINARY PLAN BOUNDARY
R.O.W. LINE
CENTER LINE
CITY LIMITS
ADJOINING PROPERTY LINES
PROPOSED 4' SIDEWALK
EASEMENT LINE
EXSIT 10' HIKE & BIKE TRAIL
PROPOSED 10' HIKE & BIKE TRAIL



CURVE TABLE and LINE TABLE. Includes columns for CURVE NOTE, ARC LENGTH, RADIUS, DELTA, CHORD BEARING, CHORD DISTANCE, LINE NOTE, DISTANCE, BEARING.



TIMMERMAN & HAGN LTD
AC 197.2700
VOL. 8399, PG.542
O.P.R.T.C.T.

NOTES:

- 1. THE TOTAL ACREAGE OF PRELIMINARY PLAN #5B IS 20.47 ACRES.
2. BENCHMARK DESCRIPTIONS:
TBM# 881: BRONZE DISK IN CONCRETE SET NEAR THE CENTER OF LOT 13, BLOCK Q, FALCON POINTE SECTION 9, AT THE INTERSECTION OF EDWARDS PLATEAU DRIVE AND FALCON POINTE BOULEVARD.
TBM# 882: BRONZE DISK IN CONCRETE SET IN THE WEST HALF OF LOT 1, BLOCK "X", FALCON POINTE SECTION 5, ON BARLEY FIELD PASS.
TBM# 883: 1/2" IRON ROD WITH ALUMINUM CAP IN CONCRETE SET IN THE EAST SIDE OF LOT 19, BLOCK F, FALCON POINTE SECTION BB, AT THE INTERSECTION OF SQUAW CREEK LANE AND GIBBONS CREEK DRIVE.
TBM# 884: 1/2" IRON ROD WITH PLASTIC CAP IN CONCRETE SET ON THE NORTH SIDE OF KELLY LANE DIRECTLY ACROSS FROM LOT 5, BLOCK D, FALCON POINTE SECTION BB.

Table with columns: STREET NAME, STREET CLASSIFICATION, ROW WIDTH (FT), TRAIL WIDTH (FT), F-F WIDTH (FT), MINIMUM RADIUS CL CURVE (FT), STREET LENGTH (FT). Lists Honey Peach Way, Burning Ember Pass, Cotton Blossom Way, and Hidden Lake Crossing.

\* NON-RESIDENTIAL LOTS
Table with columns: BLOCK, LOT, AREA (SF), DESCRIPTION. Lists lots A 57 and A 82.

7. THE AMOUNT OF CREDITABLE PARKLAND EXCEEDING THE REQUIRED AMOUNT TO BE CREDITED TOWARD FALCON POINTE DEVELOPMENT:

Table listing Preliminary #1 through #6 with acreages and descriptions. Includes Kelly Lane Park and Total Creditable Parkland Remaining.

8. VARIANCE #1 REQUESTS A VARIANCE FROM SUBCHAPTER 15.X.31 OF THE UNIFIED DEVELOPMENT CODE...

9. SEE ALUR NO.2 AGREEMENT FOR MINIMUM LOT DIMENSIONS. LOT SQUARE FOOTAGE IS SHOWN ON EACH LOT.

11. OPEN SPACE LOTS SHALL BE MAINTAINED BY THE HOME OWNER'S ASSOCIATION.

12. THE RADII OF R.O.W. ARCS ARE AS FOLLOWS: RESIDENTIAL STREET INTERSECTIONS 15' COLLECTOR/RESIDENTIAL STREET INTERSECTIONS 25'

13. A TEN-FOOT P.U.E. WILL BE DEDICATED ADJACENT TO ALL PUBLIC STREET FRONTAGE.

14. TOPOGRAPHY BASED UPON GROUND SURVEY BY SURVCON INC. (CONTOUR INTERVAL =1 FT.)

15. THERE ARE NO SIGNIFICANT TREES WITHIN THE PROPERTY BOUNDARY BASED UPON SURVEY BY MCKIM&CREED.

16. THE FUTURE SUBDIVISION WITHIN PRELIMINARY PLAN #5B WILL BE CALLED "SECTION 13C" OF FALCON POINTE.

3. LAND USE
RIGHT OF WAY: 5.04 ACRES
RESIDENTIAL LOTS: 11.25 ACRES
OPEN SPACE, WASTEWATER, DRAINAGE OR PARKLAND LOTS: 4.18 ACRES
TOTAL: 20.47 ACRES

4. LOT DESCRIPTIONS:
RESIDENTIAL: 64 LOTS
OPEN SPACE, WASTEWATER, DRAINAGE OR PARKLAND: 2 LOTS
TOTAL: 66 LOTS

5. CITY OF PFLUGERVILLE PARKLAND CALCULATIONS:
TOTAL NUMBER OF RESIDENTIAL UNITS IN THE PROPOSED SUBDIVISION PRELIM. PLAN #5B: 99 RESIDENTIAL LOTS
TOTAL AMOUNT OF PARK LAND REQUIRED IN PREL. #5B: 1.29 ACRES
TOTAL AMOUNT OF PARK LAND PROPOSED IN PREL. #5B: 2.41 ACRES

6. ALL NON-RESIDENTIAL LOTS AND OPEN SPACE REFLECTED IN THE TABLE AND WITHIN THE BOUNDARIES OF THIS PLAN WILL BE OWNED AND MAINTAINED BY THE DEVELOPER OR, AFTER TITLE TRANSFER, THE HOMEOWNERS ASSOCIATION, PURCHASER, OR NON-PROFIT CORPORATION.

Table with columns: NO., DATE, REVISION, APPROV. Includes a signature and date stamp.

CITY OF PFLUGERVILLE
FALCON POINTE
PRELIMINARY #5B
PRELIMINARY PLAN

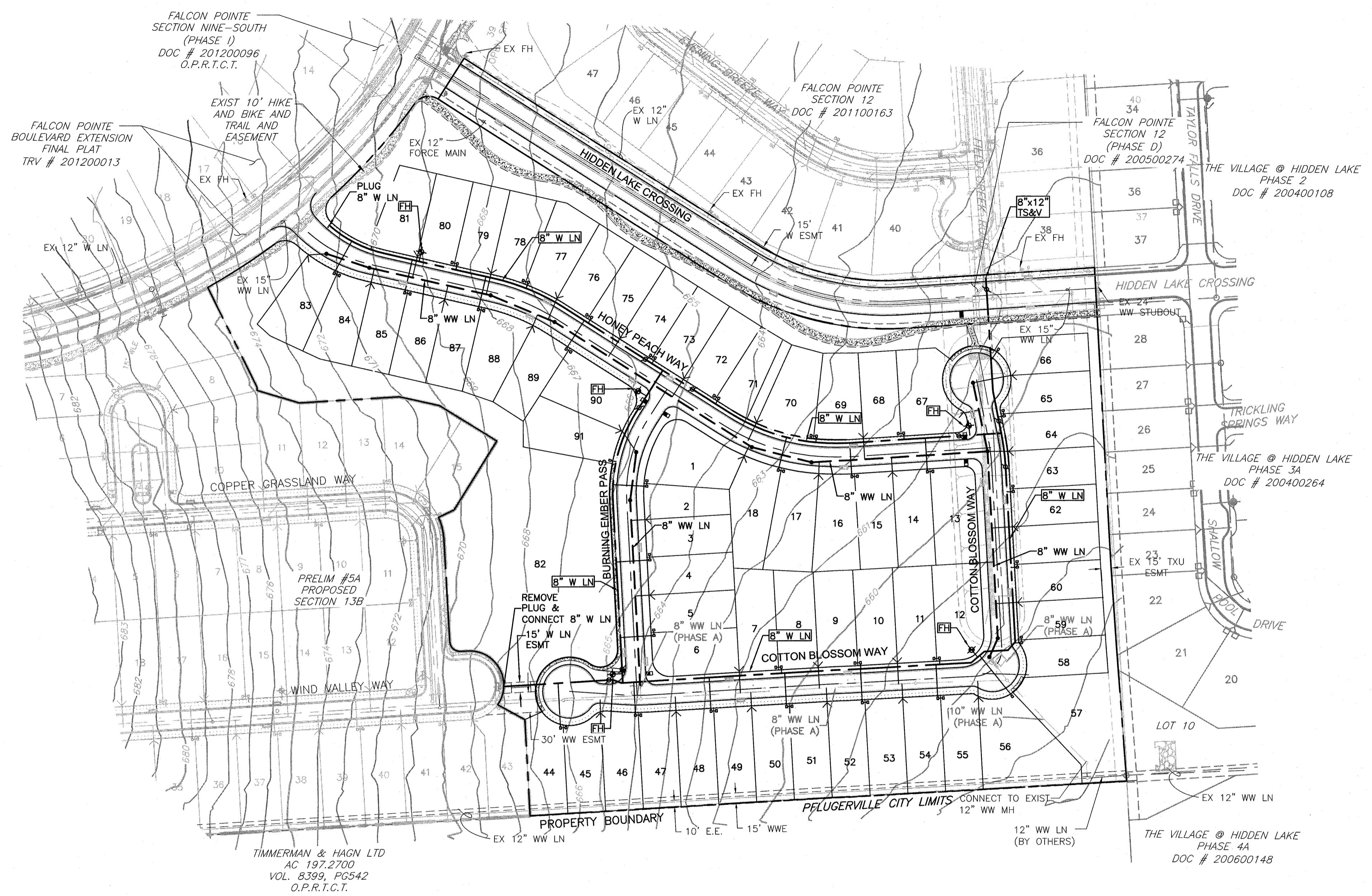
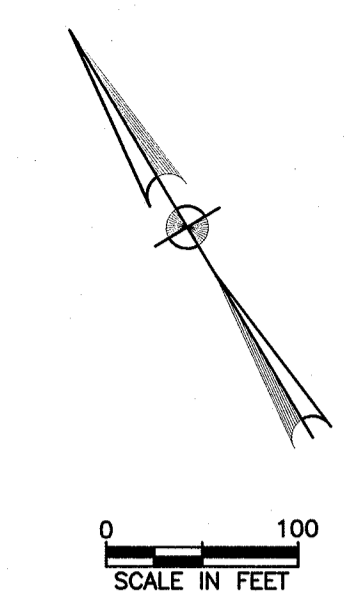


AECOM
400 WEST 15th STREET, SUITE 500
AUSTIN, TEXAS 78701
WWW.TCB.AECOM.COM
TBPE REG. NO. F-3580

Table with columns: Unit, Scale, Date, Designed, Checked, Job No., Drawn, Approved, Sheet. Includes values like AUSTIN/LDS, 1" = 100', July 8, 2013, BB, BG, 60284074, TG, BG, 3.

Plan Table: AC-TC9-BW
DRAWING: L:\FALCON POINTE\2014\3\60284074-Section-13\CADD\Draws\PRELIM\5B\5B-PLAN.dwg
PLOTTED: Aug 12, 2013 - 8:18am





FALCON POINTE SECTION NINE-SOUTH (PHASE 1) DOC # 201200096 O.P.R.T.C.T.

FALCON POINTE BOULEVARD EXTENSION FINAL PLAT TRV # 201200013

EXIST 10' HIKE AND BIKE AND TRAIL AND EASEMENT

FALCON POINTE SECTION 12 DOC # 201100163

FALCON POINTE SECTION 12 (PHASE D) DOC # 200500274

THE VILLAGE @ HIDDEN LAKE PHASE 2 DOC # 200400108

THE VILLAGE @ HIDDEN LAKE PHASE 3A DOC # 200400264

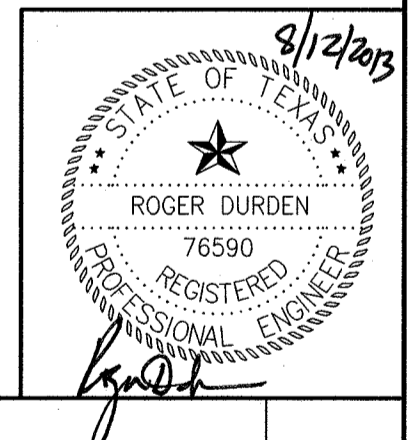
THE VILLAGE @ HIDDEN LAKE PHASE 4A DOC # 200600148

TIMMERMAN & HAGN LTD AC 197.2700 VOL. 8399, PG542 O.P.R.T.C.T.

REMOVE PLUG & CONNECT 8" W LN 15' W LN ESMT

NOTES:

1. FOR STANDARD LEGEND & ABBREVIATIONS, SEE SHEET 2.
2. FIRE HYDRANT SPACING REQUIREMENT IS 1 FIRE HYDRANT EVERY 600 FT. IN RESIDENTIAL AREAS.
3. WW MH SPACING IS 400' MAX.
4. WW LINES ARE 8" UNLESS NOTED OTHERWISE.
5. WATER LINES ARE 8" UNLESS NOTED OTHERWISE.
6. TOPOGRAPHY BASED UPON GROUND SURVEY BY SURVCON INC. (CONTOUR INTERVAL=1 FT.)
7. TREES BASED UPON SURVEY BY SURVCON INC.
8. WATER AND WASTEWATER SERVICE TO BE PROVIDED BY THE CITY OF PFLUGERVILLE
9. FIRE FLOW REQUIREMENT IS 1,000 GPM FOR SINGLE FAMILY DEVELOPMENT.
10. ALL UTILITIES CALLED OUT AS PHASE A WILL BE CONSTRUCTED WITH FALCON POINTE SECTION 13 PHASE A.

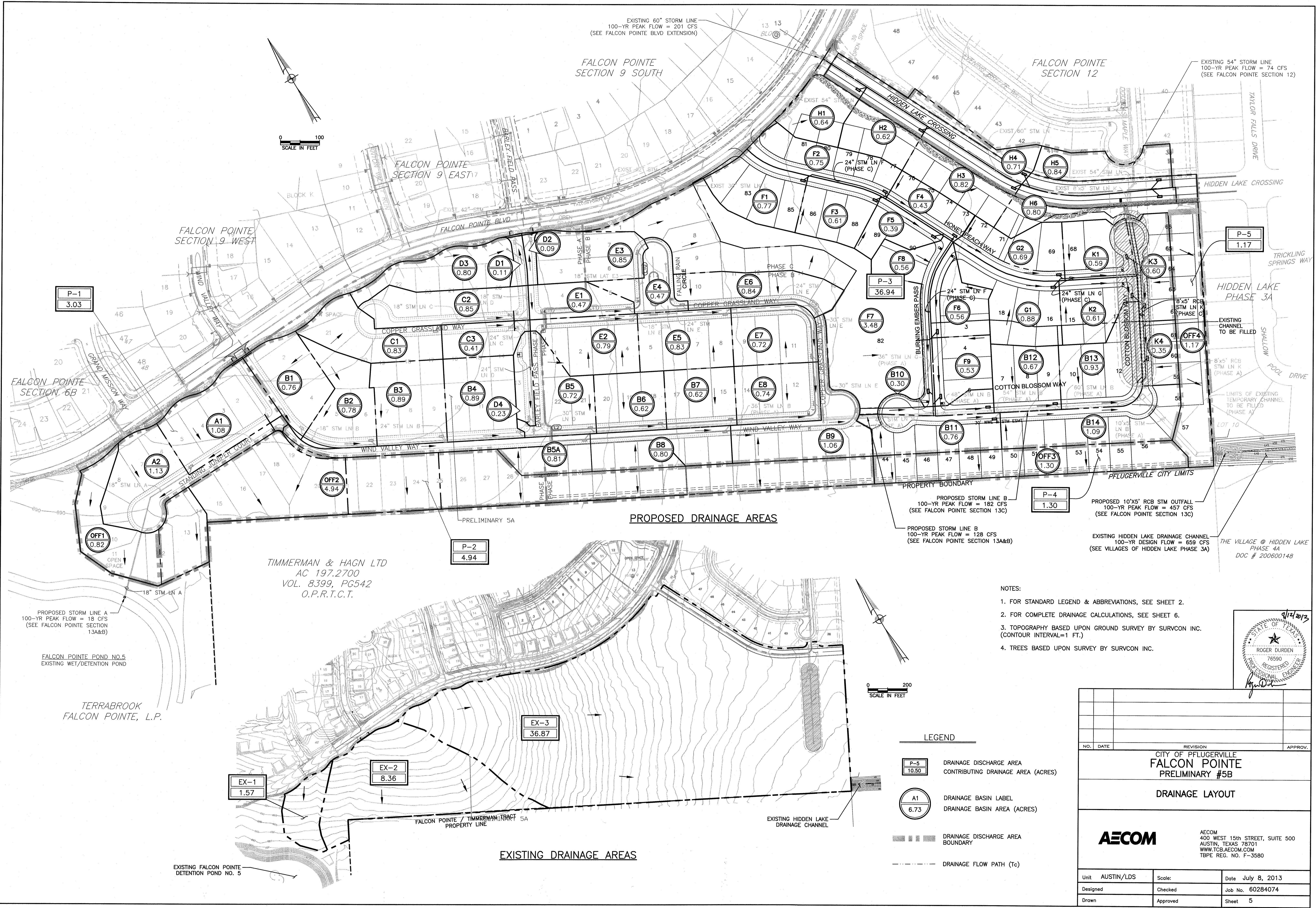


| NO.   | DATE       | REVISION  | APPROV.      |
|---|------------|---|--------------|
| CITY OF PFLUGERVILLE<br><b>FALCON POINTE</b><br>PRELIMINARY #5B<br><b>WATER AND WASTEWATER LAYOUT</b> |            |   |              |
| <b>AECOM</b>  |            | AECOM<br>400 WEST 15th STREET, SUITE 500<br>AUSTIN, TEXAS 78701<br>WWW.TCB.AECOM.COM<br>TBP REG. NO. F-3580 |              |
| Unit  | AUSTIN/LDS | Scale:  | 1" = 100'    |
| Designed  | Checked    | Date  | July 8, 2013 |
| Drawn   | Approved   | Job No.   | 60284074     |
|   |            | Sheet   | 4            |

Pen Table: AC-TCB-BW  
 DRAWING: L:\FALCON POINTE\2014\60284074-Section-13\CADD\Plots\Preliminary\PRELIM\_5B\_SHEETS\PL5B-11-UTIL.dwg PLOTTED: Aug 12, 2013 - 8:01am



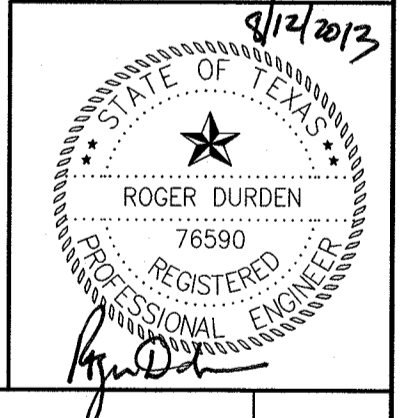
Pen Table: AC-TCB-BW  
 DRAWING: L: FALCON POINTE\2014\3\60284074-Section-13\CADD\Plans\Preliminary\5B\SHEETS\5B-1-DMAP.dwg PLOTTED: Aug 12, 2013 - 8:07am



TIMMERMAN & HAGN LTD  
 AC 197.2700  
 VOL. 8399, PG542  
 O.P.R.T.C.T.

TERRABROOK  
 FALCON POINTE, L.P.

- NOTES:
1. FOR STANDARD LEGEND & ABBREVIATIONS, SEE SHEET 2.
  2. FOR COMPLETE DRAINAGE CALCULATIONS, SEE SHEET 6.
  3. TOPOGRAPHY BASED UPON GROUND SURVEY BY SURVCON INC. (CONTOUR INTERVAL=1 FT.)
  4. TREES BASED UPON SURVEY BY SURVCON INC.



**LEGEND**

- P-5  
10.50 DRAINAGE DISCHARGE AREA  
CONTRIBUTING DRAINAGE AREA (ACRES)
- A1  
6.73 DRAINAGE BASIN LABEL  
DRAINAGE BASIN AREA (ACRES)
- DRAINAGE DISCHARGE AREA  
BOUNDARY
- DRAINAGE FLOW PATH (Tc)

| NO.  | DATE       | REVISION | APPROV.           |
|--|------------|----------|-------------------|
| CITY OF PFLUGERVILLE<br><b>FALCON POINTE</b><br>PRELIMINARY #5B  |            |          |                   |
| DRAINAGE LAYOUT  |            |          |                   |
|  |            |          |                   |
| AECOM<br>400 WEST 15th STREET, SUITE 500<br>AUSTIN, TEXAS 78701<br>WWW.TCB.AECOM.COM<br>TBPE REG. NO. F-3580 |            |          |                   |
| Unit   | AUSTIN/LDS | Scale:   | Date July 8, 2013 |
| Designed   |            | Checked  | Job No. 60284074  |
| Drawn  |            | Approved | Sheet 5           |



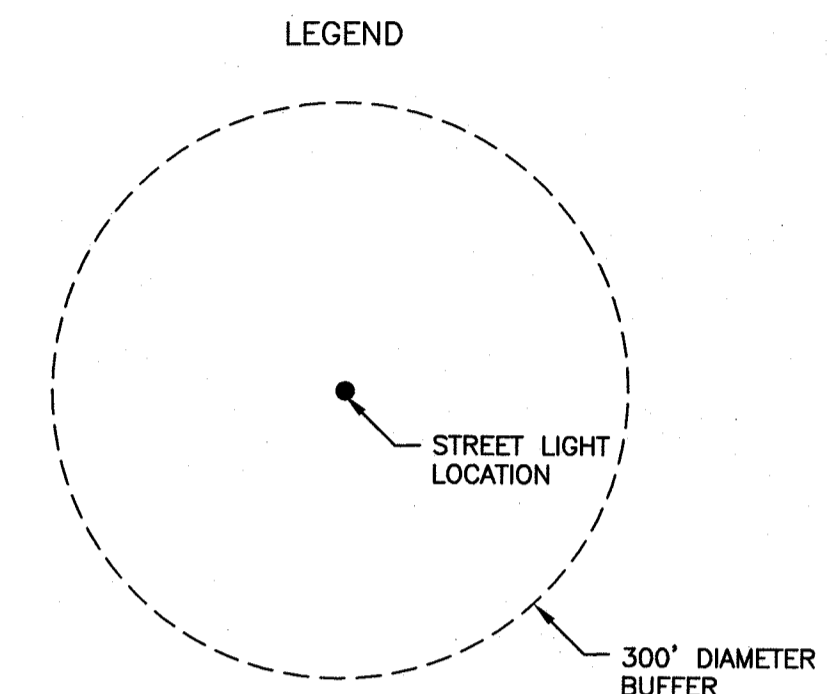
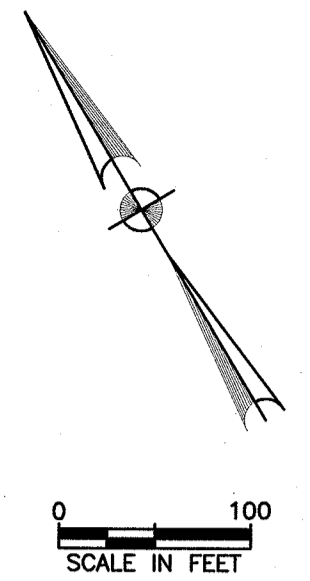
Pen Table: AC-TCB-BW  
 DRAWING: L:\FALCON POINT\2014\3\60284074-Section-13\CADD\Plots\Preliminary\PRELIM\_5B\_SHEETS\PL5B-LT-DRAW.dwg PLOTTED: Aug 12, 2013 - 7:57am

| Falcon Pointe Section Preliminary Plan #5B |                             |                                |                               |                        |              |              |               |                         |                        |              |              |               |                      |              |              |               |
|--|-----------------------------|--------------------------------|-------------------------------|------------------------|--------------|--------------|---------------|-------------------------|------------------------|--------------|--------------|---------------|----------------------|--------------|--------------|---------------|
| Peak Flow Calculation - Rational Method    |                             |                                |                               |                        |              |              |               |                         |                        |              |              |               |                      |              |              |               |
| Storm Drainage Inlets                      |                             |                                |                               |                        |              |              |               |                         |                        |              |              |               |                      |              |              |               |
| Storm Pipe<br>Drainage Inlets              | Drainage<br>Area<br>(acres) | Impervious<br>Cover<br>(acres) | Impervious<br>Fraction<br>(%) | RUNOFF COEFFICIENT (C) |              |              |               | Flowpath<br>Tc<br>(min) | RAINFALL INTENSITY (I) |              |              |               | RUNOFF PEAK FLOW (Q) |              |              |               |
|  |                             |                                |                               | C<br>2-Year            | C<br>10-Year | C<br>25-Year | C<br>100-Year |                         | I<br>2-Year            | I<br>10-Year | I<br>25-Year | I<br>100-Year | Q<br>2-Year          | Q<br>10-Year | Q<br>25-Year | Q<br>100-Year |
| <b>Storm Line "A"</b>                      |                             |                                |                               |                        |              |              |               |                         |                        |              |              |               |                      |              |              |               |
| A1   | 1.08                        | 0.51                           | 47%                           | 0.48                   | 0.55         | 0.59         | 0.67          | 6.90                    | 5.26                   | 7.83         | 9.27         | 11.61         | 2.7                  | 4.6          | 5.9          | 8.4           |
| A2   | 1.13                        | 0.57                           | 51%                           | 0.50                   | 0.57         | 0.61         | 0.69          | 5.89                    | 5.51                   | 8.20         | 9.70         | 12.09         | 3.1                  | 5.3          | 6.7          | 9.5           |
| <b>Storm Line "B"</b>                      |                             |                                |                               |                        |              |              |               |                         |                        |              |              |               |                      |              |              |               |
| B1   | 0.76                        | 0.34                           | 45%                           | 0.48                   | 0.54         | 0.58         | 0.66          | 6.08                    | 5.46                   | 8.13         | 9.61         | 12.00         | 2.0                  | 3.3          | 4.3          | 6.0           |
| B2   | 0.78                        | 0.24                           | 31%                           | 0.40                   | 0.46         | 0.50         | 0.58          | 8.06                    | 5.00                   | 7.45         | 8.83         | 11.12         | 1.6                  | 2.7          | 3.5          | 5.0           |
| B3   | 0.89                        | 0.43                           | 48%                           | 0.49                   | 0.55         | 0.60         | 0.68          | 6.56                    | 5.34                   | 7.95         | 9.41         | 11.77         | 2.3                  | 3.9          | 5.0          | 7.1           |
| B4   | 0.89                        | 0.43                           | 49%                           | 0.49                   | 0.56         | 0.60         | 0.68          | 6.60                    | 5.33                   | 7.94         | 9.39         | 11.75         | 2.3                  | 3.9          | 5.0          | 7.1           |
| B5   | 0.72                        | 0.38                           | 52%                           | 0.51                   | 0.58         | 0.62         | 0.70          | 7.27                    | 5.17                   | 7.71         | 9.13         | 11.46         | 1.9                  | 3.2          | 4.1          | 5.8           |
| B5A  | 0.81                        | 0.47                           | 58%                           | 0.54                   | 0.61         | 0.65         | 0.74          | 5.00                    | 5.76                   | 8.57         | 10.11        | 12.54         | 2.5                  | 4.2          | 5.4          | 7.5           |
| B6   | 0.62                        | 0.31                           | 50%                           | 0.50                   | 0.56         | 0.61         | 0.69          | 5.57                    | 5.59                   | 8.33         | 9.84         | 12.25         | 1.7                  | 2.9          | 3.7          | 5.2           |
| B7   | 0.62                        | 0.31                           | 50%                           | 0.50                   | 0.56         | 0.61         | 0.69          | 5.31                    | 5.67                   | 8.44         | 9.96         | 12.38         | 1.8                  | 3.0          | 3.8          | 5.3           |
| B8   | 0.80                        | 0.39                           | 48%                           | 0.49                   | 0.56         | 0.60         | 0.68          | 5.00                    | 5.76                   | 8.57         | 10.11        | 12.54         | 2.3                  | 3.8          | 4.9          | 6.8           |
| B9   | 1.06                        | 0.57                           | 54%                           | 0.52                   | 0.59         | 0.63         | 0.71          | 5.00                    | 5.76                   | 8.57         | 10.11        | 12.54         | 3.2                  | 5.3          | 6.8          | 9.5           |
| B10  | 0.30                        | 0.17                           | 56%                           | 0.53                   | 0.60         | 0.64         | 0.72          | 5.00                    | 5.76                   | 8.57         | 10.11        | 12.54         | 0.9                  | 1.5          | 1.9          | 2.7           |
| B11  | 0.76                        | 0.37                           | 48%                           | 0.49                   | 0.56         | 0.60         | 0.68          | 5.00                    | 5.76                   | 8.57         | 10.11        | 12.54         | 2.1                  | 3.6          | 4.6          | 6.5           |
| B12  | 0.67                        | 0.30                           | 45%                           | 0.47                   | 0.54         | 0.58         | 0.66          | 6.60                    | 5.33                   | 7.94         | 9.39         | 11.75         | 1.7                  | 2.8          | 3.6          | 5.2           |
| B13  | 0.93                        | 0.46                           | 50%                           | 0.50                   | 0.56         | 0.61         | 0.69          | 6.09                    | 5.46                   | 8.13         | 9.61         | 11.99         | 2.5                  | 4.2          | 5.4          | 7.7           |
| B14  | 1.09                        | 0.44                           | 40%                           | 0.45                   | 0.51         | 0.56         | 0.64          | 5.00                    | 5.76                   | 8.57         | 10.11        | 12.54         | 2.8                  | 4.8          | 6.1          | 8.7           |
| <b>Storm Line "C"</b>                      |                             |                                |                               |                        |              |              |               |                         |                        |              |              |               |                      |              |              |               |
| C1   | 0.83                        | 0.30                           | 36%                           | 0.43                   | 0.49         | 0.53         | 0.61          | 6.98                    | 5.24                   | 7.80         | 9.24         | 11.58         | 1.9                  | 3.2          | 4.1          | 5.9           |
| C2   | 0.85                        | 0.45                           | 53%                           | 0.51                   | 0.58         | 0.63         | 0.71          | 5.19                    | 5.70                   | 8.49         | 10.02        | 12.45         | 2.5                  | 4.2          | 5.3          | 7.5           |
| C3   | 0.41                        | 0.23                           | 55%                           | 0.53                   | 0.59         | 0.64         | 0.72          | 5.00                    | 5.76                   | 8.57         | 10.11        | 12.54         | 1.2                  | 2.1          | 2.6          | 3.7           |
| <b>Storm Line "D"</b>                      |                             |                                |                               |                        |              |              |               |                         |                        |              |              |               |                      |              |              |               |
| D1   | 0.11                        | 0.06                           | 52%                           | 0.51                   | 0.58         | 0.62         | 0.70          | 5.00                    | 5.76                   | 8.57         | 10.11        | 12.54         | 0.3                  | 0.5          | 0.7          | 1.0           |
| D2   | 0.09                        | 0.06                           | 64%                           | 0.57                   | 0.64         | 0.68         | 0.77          | 5.00                    | 5.76                   | 8.57         | 10.11        | 12.54         | 0.3                  | 0.5          | 0.6          | 0.9           |
| D3   | 0.80                        | 0.19                           | 24%                           | 0.37                   | 0.43         | 0.47         | 0.55          | 6.72                    | 5.30                   | 7.89         | 9.34         | 11.70         | 1.6                  | 2.7          | 3.5          | 5.1           |
| D4   | 0.23                        | 0.19                           | 84%                           | 0.67                   | 0.75         | 0.79         | 0.88          | 5.00                    | 5.76                   | 8.57         | 10.11        | 12.54         | 0.9                  | 1.5          | 1.8          | 2.5           |
| <b>Storm Line "E"</b>                      |                             |                                |                               |                        |              |              |               |                         |                        |              |              |               |                      |              |              |               |
| E1   | 0.47                        | 0.23                           | 49%                           | 0.50                   | 0.56         | 0.61         | 0.69          | 5.00                    | 5.76                   | 8.57         | 10.11        | 12.54         | 1.3                  | 2.3          | 2.9          | 4.0           |
| E2   | 0.79                        | 0.39                           | 49%                           | 0.49                   | 0.56         | 0.60         | 0.68          | 5.11                    | 5.73                   | 8.52         | 10.06        | 12.49         | 2.2                  | 3.8          | 4.8          | 6.7           |
| E3   | 0.85                        | 0.34                           | 41%                           | 0.45                   | 0.51         | 0.56         | 0.64          | 6.64                    | 5.32                   | 7.92         | 9.37         | 11.73         | 2.0                  | 3.5          | 4.5          | 6.4           |
| E4   | 0.47                        | 0.16                           | 35%                           | 0.42                   | 0.48         | 0.53         | 0.60          | 5.00                    | 5.76                   | 8.57         | 10.11        | 12.54         | 1.1                  | 1.9          | 2.5          | 3.6           |
| E5   | 0.83                        | 0.41                           | 50%                           | 0.50                   | 0.56         | 0.61         | 0.69          | 5.70                    | 5.56                   | 8.28         | 9.78         | 12.18         | 2.3                  | 3.9          | 4.9          | 7.0           |
| E6   | 0.84                        | 0.41                           | 49%                           | 0.50                   | 0.56         | 0.61         | 0.69          | 6.54                    | 5.34                   | 7.96         | 9.42         | 11.78         | 2.2                  | 3.8          | 4.8          | 6.8           |
| E7   | 0.72                        | 0.38                           | 52%                           | 0.51                   | 0.58         | 0.62         | 0.70          | 6.17                    | 5.44                   | 8.10         | 9.57         | 11.95         | 2.0                  | 3.4          | 4.3          | 6.1           |
| E8   | 0.74                        | 0.39                           | 52%                           | 0.51                   | 0.58         | 0.62         | 0.70          | 5.67                    | 5.57                   | 8.29         | 9.80         | 12.20         | 2.1                  | 3.5          | 4.5          | 6.4           |
| <b>Storm Line "F"</b>                      |                             |                                |                               |                        |              |              |               |                         |                        |              |              |               |                      |              |              |               |
| F1   | 0.77                        | 0.31                           | 40%                           | 0.45                   | 0.51         | 0.56         | 0.63          | 5.66                    | 5.57                   | 8.30         | 9.80         | 12.21         | 1.9                  | 3.3          | 4.2          | 6.0           |
| F2   | 0.75                        | 0.36                           | 47%                           | 0.49                   | 0.55         | 0.60         | 0.68          | 13.11                   | 4.13                   | 6.18         | 7.36         | 9.43          | 1.5                  | 2.6          | 3.3          | 4.8           |
| F3   | 0.61                        | 0.32                           | 52%                           | 0.51                   | 0.57         | 0.62         | 0.70          | 7.17                    | 5.19                   | 7.74         | 9.16         | 11.50         | 1.6                  | 2.7          | 3.5          | 4.9           |
| F4   | 0.43                        | 0.24                           | 56%                           | 0.53                   | 0.60         | 0.64         | 0.73          | 5.71                    | 5.56                   | 8.28         | 9.78         | 12.18         | 1.3                  | 2.1          | 2.7          | 3.8           |
| F5   | 0.39                        | 0.20                           | 50%                           | 0.50                   | 0.57         | 0.61         | 0.69          | 6.71                    | 5.30                   | 7.90         | 9.35         | 11.70         | 1.0                  | 1.8          | 2.2          | 3.2           |
| F6   | 0.56                        | 0.30                           | 54%                           | 0.52                   | 0.59         | 0.63         | 0.71          | 5.00                    | 5.76                   | 8.57         | 10.11        | 12.54         | 1.7                  | 2.8          | 3.6          | 5.0           |
| F7   | 3.48                        | 0.35                           | 10%                           | 0.30                   | 0.35         | 0.39         | 0.47          | 5.00                    | 5.76                   | 8.57         | 10.11        | 12.54         | 6.0                  | 10.5         | 13.9         | 20.4          |
| F8   | 0.56                        | 0.30                           | 54%                           | 0.52                   | 0.59         | 0.63         | 0.71          | 5.99                    | 5.48                   | 8.16         | 9.65         | 12.04         | 1.6                  | 2.7          | 3.4          | 4.8           |
| F9   | 0.53                        | 0.27                           | 51%                           | 0.50                   | 0.57         | 0.61         | 0.69          | 5.43                    | 5.63                   | 8.39         | 9.91         | 12.32         | 1.5                  | 2.5          | 3.2          | 4.5           |
| <b>Storm Line "G"</b>                      |                             |                                |                               |                        |              |              |               |                         |                        |              |              |               |                      |              |              |               |
| G1   | 0.88                        | 0.36                           | 42%                           | 0.46                   | 0.52         | 0.56         | 0.64          | 5.00                    | 5.76                   | 8.57         | 10.11        | 12.54         | 2.3                  | 3.9          | 5.0          | 7.1           |
| G2   | 0.69                        | 0.35                           | 50%                           | 0.50                   | 0.57         | 0.61         | 0.69          | 6.61                    | 5.33                   | 7.93         | 9.39         | 11.75         | 1.8                  | 3.1          | 4.0          | 5.6           |
| <b>Storm Line "H"</b>                      |                             |                                |                               |                        |              |              |               |                         |                        |              |              |               |                      |              |              |               |
| H1   | 0.64                        | 0.13                           | 21%                           | 0.36                   | 0.41         | 0.45         | 0.53          | 5.00                    | 5.76                   | 8.57         | 10.11        | 12.54         | 1.3                  | 2.3          | 2.9          | 4.2           |
| H2   | 0.62                        | 0.19                           | 31%                           | 0.41                   | 0.47         | 0.51         | 0.59          | 5.00                    | 5.76                   | 8.57         | 10.11        | 12.54         | 1.5                  | 2.5          | 3.2          | 4.6           |
| H3   | 0.82                        | 0.31                           | 39%                           | 0.44                   | 0.50         | 0.55         | 0.63          | 5.00                    | 5.76                   | 8.57         | 10.11        | 12.54         | 2.1                  | 3.5          | 4.5          | 6.4           |
| H4   | 0.71                        | 0.28                           | 39%                           | 0.45                   | 0.51         | 0.55         | 0.63          | 5.00                    | 5.76                   | 8.57         | 10.11        | 12.54         | 1.8                  | 3.1          | 4.0          | 5.6           |
| H5   | 0.84                        | 0.29                           | 34%                           | 0.42                   | 0.48         | 0.52         | 0.60          | 6.27                    | 5.41                   | 8.06         | 9.53         | 11.90         | 1.9                  | 3.2          | 4.2          | 6.0           |
| H6   | 0.80                        | 0.23                           | 28%                           | 0.39                   | 0.45         | 0.49         | 0.57          | 6.58                    | 5.33                   | 7.95         | 9.40         | 11.76         | 1.7                  | 2.9          | 3.7          | 5.4           |
| <b>Storm Line "K"</b>                      |                             |                                |                               |                        |              |              |               |                         |                        |              |              |               |                      |              |              |               |
| K1   | 0.59                        | 0.30                           | 51%                           | 0.50                   | 0.57         | 0.61         | 0.69          | 5.05                    | 5.74                   | 8.55         | 10.09        | 12.52         | 1.7                  | 2.9          | 3.6          | 5.1           |
| K2   | 0.61                        | 0.31                           | 50%                           | 0.50                   | 0.57         | 0.61         | 0.69          | 5.00                    | 5.76                   | 8.57         | 10.11        | 12.54         | 1.8                  | 3.0          | 3.8          | 5.3           |
| K3   | 0.60                        | 0.31                           | 52%                           | 0.51                   | 0.57         | 0.62         | 0.70          | 6.07                    | 5.46                   | 8.14         | 9.62         | 12.00         | 1.7                  | 2.8          | 3.6          | 5.0           |
| K4   | 0.35                        | 0.19                           | 53%                           | 0.51                   | 0.58         | 0.63         | 0.71          | 6.49                    | 5.36                   | 7.98         | 9.44         | 11.80         | 1.0                  | 1.6          | 2.1          | 2.9           |
| <b>Runoff to Off-site Areas</b>            |                             |                                |                               |                        |              |              |               |                         |                        |              |              |               |                      |              |              |               |
| OFF1                                       | 0.82                        | 0.19                           | 24%                           | 0.37                   | 0.43         | 0.47         | 0.54          | 5.00                    | 5.76                   | 8.57         | 10.11        | 12.54         | 1.7                  | 3.0          | 3.9          | 5.6           |
| OFF2                                       | 4.94                        | 0.54                           | 11%                           | 0.30                   | 0.36         | 0.40         | 0.47          | 5.00                    | 5.76                   | 8.57         | 10.11        | 12.54         | 8.7                  | 15.2         | 19.9         | 29.2          |
| OFF3                                       | 1.30                        | 0.58                           | 45%                           | 0.47                   | 0.54         | 0.58         | 0.66          | 5.00                    | 5.76                   | 8.57         | 10.11        | 12.54         | 3.6                  | 6.0          | 7.7          | 10.8          |
| OFF4                                       | 1.17                        | 0.35                           | 30%                           | 0.40                   | 0.46         | 0.50         | 0.58          | 5.00                    | 5.76                   | 8.57         | 10.11        | 12.54         | 2.7                  | 4.6          | 5.9          | 8.4           |

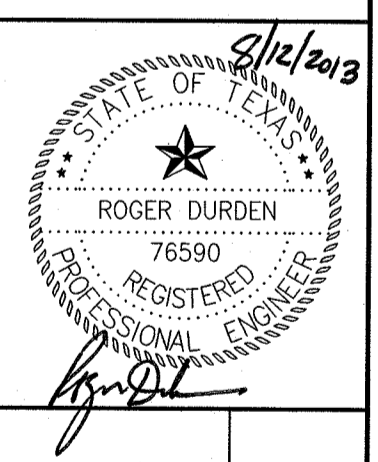
Notes: Runoff Coefficient (C) and Rainfall Intensity (I) per City of Austin Drainage Criteria Manual; Runoff Coefficient C = C<sub>PERV</sub>\*(A<sub>PERV</sub>/A<sub>TOTAL</sub>)+C<sub>IMPERV</sub>\*(A<sub>IMPERV</sub>/A<sub>TOTAL</sub>); Rainfall Intensity I = a/(Tc+b)<sup>c</sup>; Peak Flow Q = C\*I\*A

| Falcon Pointe Section Preliminary Plan #5B         |                             |                                |                               |                        |              |              |               |                         |                        |              |              |               |                      |              |              |               |
|--|-----------------------------|--------------------------------|-------------------------------|------------------------|--------------|--------------|---------------|-------------------------|------------------------|--------------|--------------|---------------|----------------------|--------------|--------------|---------------|
| Peak Flow Calculation - Rational Method            |                             |                                |                               |                        |              |              |               |                         |                        |              |              |               |                      |              |              |               |
| Overall Drainage Areas                             |                             |                                |                               |                        |              |              |               |                         |                        |              |              |               |                      |              |              |               |
| Overall Storm Drainage<br>(Stormwater Destination) | Drainage<br>Area<br>(acres) | Impervious<br>Cover<br>(acres) | Impervious<br>Fraction<br>(%) | RUNOFF COEFFICIENT (C) |              |              |               | Flowpath<br>Tc<br>(min) | RAINFALL INTENSITY (I) |              |              |               | RUNOFF PEAK FLOW (Q) |              |              |               |
|  |                             |                                |                               | C<br>2-Year            | C<br>10-Year | C<br>25-Year | C<br>100-Year |                         | I<br>2-Year            | I<br>10-Year | I<br>25-Year | I<br>100-Year | Q<br>2-Year          | Q<br>10-Year | Q<br>25-Year | Q<br>100-Year |
| <b>Proposed Developed Condition</b>                |                             |                                |                               |                        |              |              |               |                         |                        |              |              |               |                      |              |              |               |
| P-1 (Det. Pond No. 5)                              | 3.03                        | 1.28                           | 42%                           | 0.51                   | 0.57         | 0.61         | 0.69          | 7.52                    | 5.11                   | 7.62         | 9.03         | 11.35         | 7.9                  | 13.2         | 16.8         | 23.8          |
| P-2 (Timmerman Tract)                              | 4.94                        | 1.70                           | 34%                           | 0.47                   | 0.53         | 0.58         | 0.66          | 6.45                    | 5.37                   | 7.99         | 9.45         | 11.82         | 12.6                 | 21.1         | 27.0         | 38.3          |
| P-3 (Hidden Lake Channel)                          | 36.94                       | 16.99                          | 46%                           | 0.52                   | 0.59         | 0.63         | 0.71          | 5.87                    | 5.51                   | 8.21         | 9.70         | 12.10         | 106.6                | 178.0        | 226.4        | 317.7         |
| P-4 (Timmerman Tract 2)                            | 1.30                        | 0.58                           | 45%                           | 0.52                   | 0.58         | 0.62         | 0.70          | 5.00                    | 5.76                   | 8.57         | 10.11        | 12.54         | 3.9                  | 6.5          | 8.2          | 11.5          |
| P-5 (Hidden Lake)                                  | 1.17                        | 0.35                           | 30%                           | 0.46                   | 0.51         | 0.56         | 0.63          | 5.00                    | 5.76                   | 8.57         | 10.11        | 12.54         | 3.1                  | 5.1          | 6.6          | 9.3           |
| <b>Existing Undeveloped Condition</b>              |                             |                                |                               |                        |              |              |               |                         |                        |              |              |               |                      |              |              |               |
| Ex-1 (Det. Pond No. 5)                             | 1.57                        | 0.00                           | 0%                            | 0.33                   | 0.38         | 0.42         | 0.49          | 8.07                    | 4.99                   | 7.44         | 8.83         | 11.12         | 2.6                  | 4.4          | 5.8          | 8.6           |
| Ex-2 (Timmerman Tract)                             | 8.36                        | 0.00                           | 0%                            | 0.33                   | 0.38         | 0.42         | 0.49          | 10.11                   | 4.60                   | 6.87         | 8.16         | 10.36         | 12.7                 | 21.8         | 28.6         | 42.4          |
| Ex-  |                             |                                |                               |                        |              |              |               |                         |                        |              |              |               |                      |              |              |               |

File: Tabler AC-T08-BW  
 DRAWING: L:\FALCON POINTE\2014\3\_60284074-Section-13\CADD\Plans\Illumination.dwg PLOTTED: Aug 12, 2013 8:59am



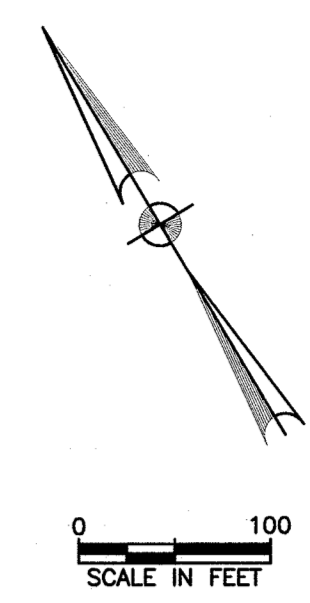
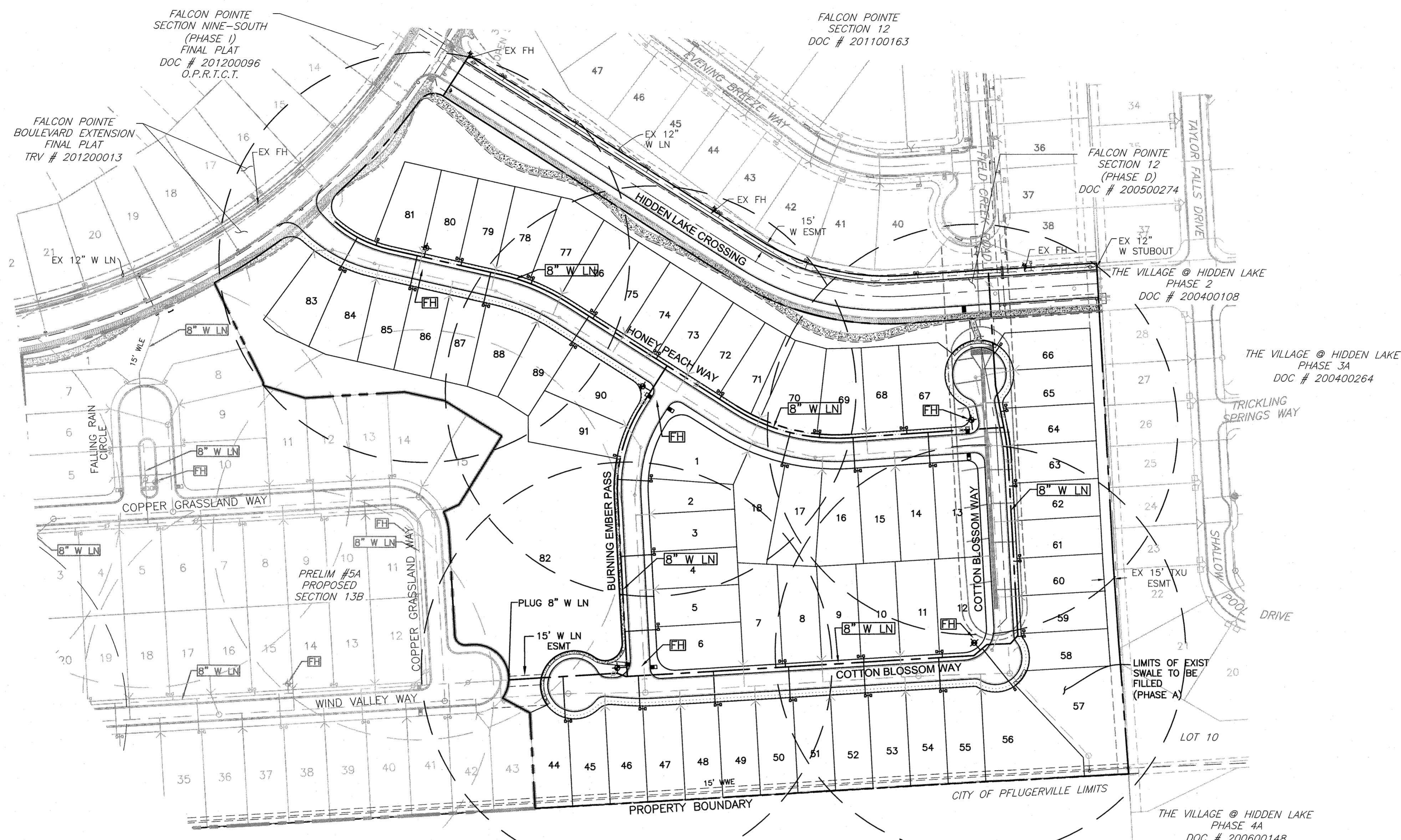
**NOTE:**  
 PROPOSED STREET LIGHTS TO BE:  
 ONGOR  
 STREET LIGHT LUMINAIRE  
 HISTORICAL - UNDERGROUND  
 CAST IRON POLE - ANCHOR BASE  
 (DWG. 213-540)



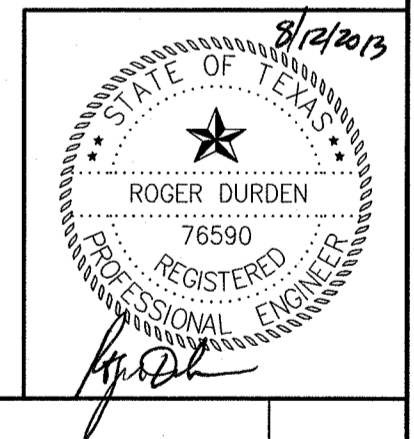
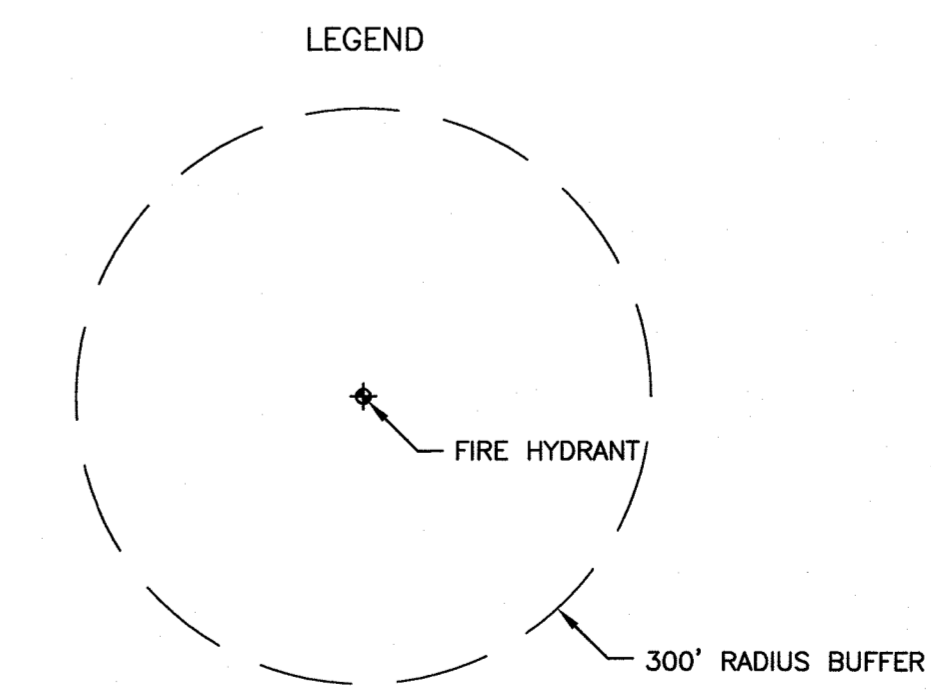
| NO.   | DATE         | REVISION   | APPROV.   |
|---|--------------|--|-----------|
|   |              |  |           |
| CITY OF PFLUGERVILLE<br><b>FALCON POINTE</b><br>PRELIMINARY #5B<br><br><b>ILLUMINATION PLAN</b> |              |  |           |
| <b>AECOM</b>  |              | AECOM<br>400 WEST 15th STREET, SUITE 500<br>AUSTIN, TEXAS 78701<br>WWW.TCB.AECOM.COM<br>TBPE REG. NO. F-3580 |           |
| Unit  | AUSTIN/LDS   | Scale:   | 1" = 100' |
| Designed  |              | Checked  |           |
| Drawn   |              | Approved   |           |
| Date  | July 8, 2013 | Job No.  | 60284074  |
| Sheet   | 7            |  |           |



Pen Tabler: AC-TCB-BW  
 DRAWING: L:\FALCON POINTE\20143\60284074-Section-13\CADD\Plate\Preliminary\PRELIM\_5B\_SHEET\5B-FH-LOCATION-CHECK.dwg PLOTTED: Aug 12, 2013 - 8:24am



TIMMERMAN & HAGN LTD  
 AC 197.2700  
 VOL. 8399, PG542.  
 O.P.R.T.C.T.



| NO.   | DATE       | REVISION   | APPROV.      |
|---|------------|--|--------------|
| CITY OF PFLUGERVILLE<br><b>FALCON POINTE</b><br>PRELIMINARY #5B |            |  |              |
| <b>FIRE HYDRANT SERVICE AREA</b>                                |            |  |              |
| <b>AECOM</b>  |            | AECOM<br>400 WEST 15TH STREET, SUITE 500<br>AUSTIN, TEXAS 78701<br>WWW.TCB.AECOM.COM<br>TBPE REG. NO. F-3580 |              |
| Unit  | AUSTIN/LDS | Scale:   | 1" = 100'    |
| Designed  | Checked    | Date   | July 8, 2013 |
| Drawn   | Approved   | Job No.  | 60284074     |
|   |            | Sheet  | 8            |