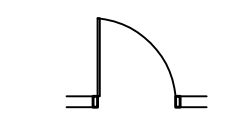


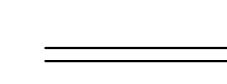


DRAWING LEGEND

-  NEW DOOR
-  EXISTING DOOR
-  NEW WALL
-  EXISTING WALL



11100 METRIC BLVD
 BLDG 7 SUITE 450
 AUSTIN, TX 78758
 (512) 371-1232

DRAWING TITLE:

TEST FIT

LOCATION:

RAILROAD
 PFLUGERVILLE, TX

JOB #: 19101

SCALE: 1/4" = 1'-0"

DATE		
04.09.19	HJC	OPTION 1

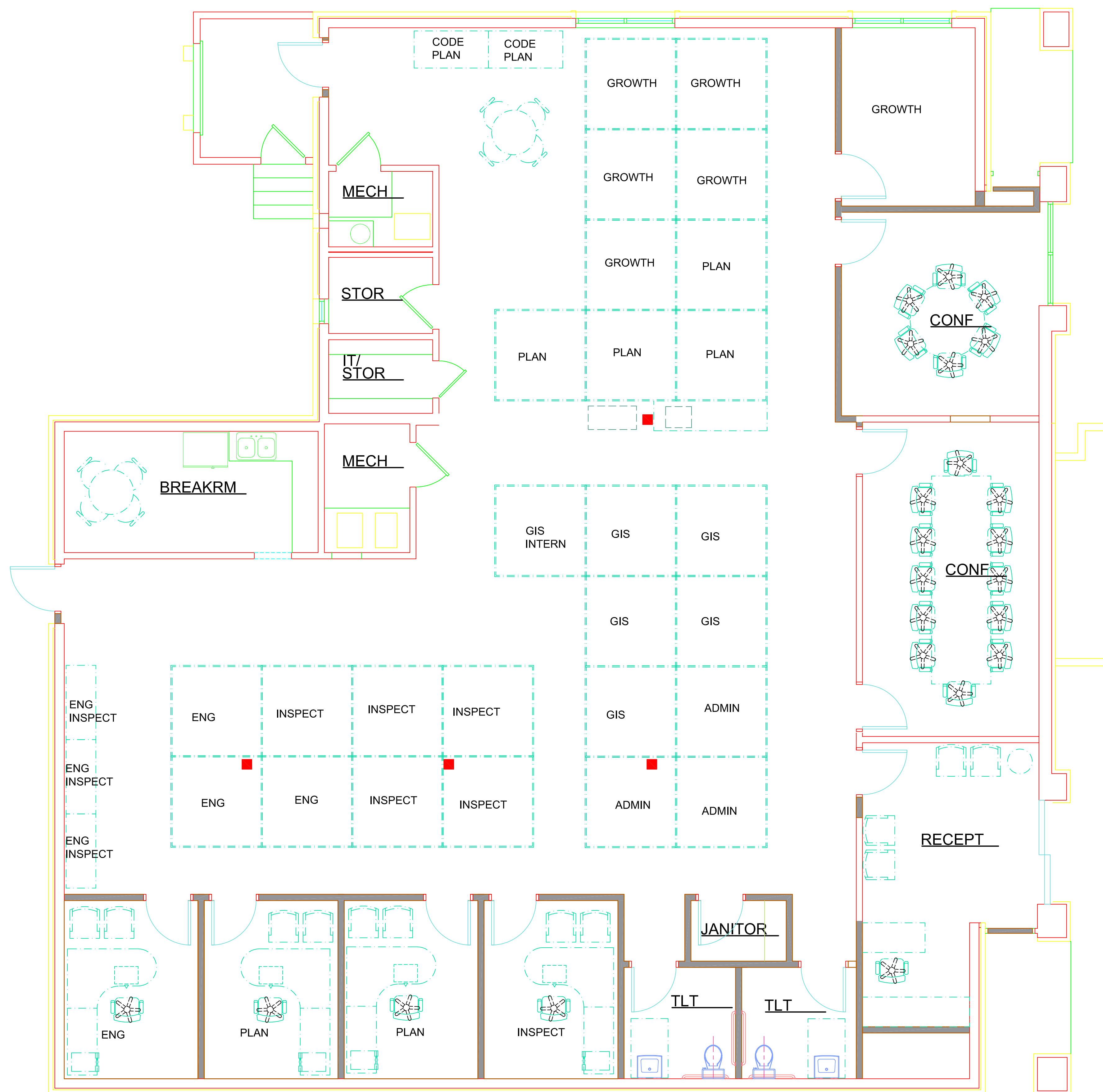
APPROVED BY: _____

DATE: _____

PRELIMINARY DESIGN DOCUMENT

This document is not for regulatory approval, permitting, or construction. It is released under the authority of:
 Registrant's Name: Margaret Teinert
 Registration No. 6012
 Date: 00/00/00

**SHEET
 A-2**



01 CONSTRUCTION PLAN 1ST FLOOR
 SCALE: 1/4" = 1'-0"

This document contains confidential information which is proprietary to Facilities Resource, Inc. It is intended solely for information and use on the project named herein. No part of its contents may be used, copied, disclosed or conveyed to any party in any manner whatsoever without prior written permission from Facilities Resource, Inc.

Project: City of Pflugerville 19101 Post Office Interior Services T: 00/00/00