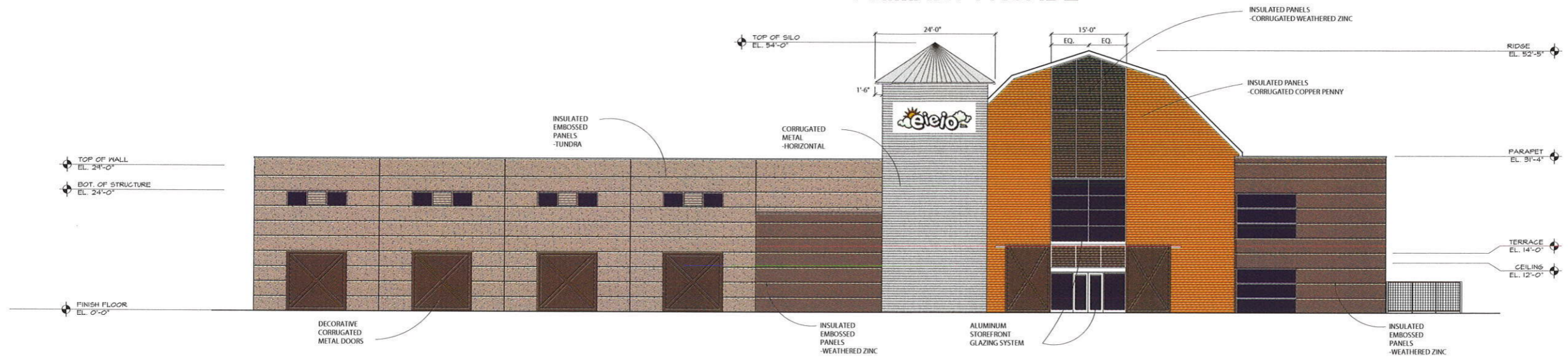
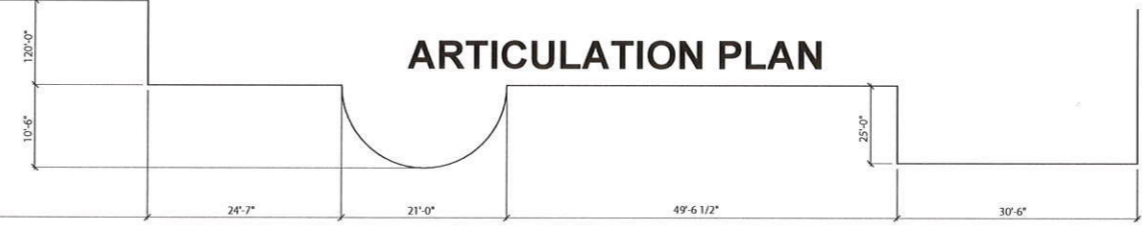


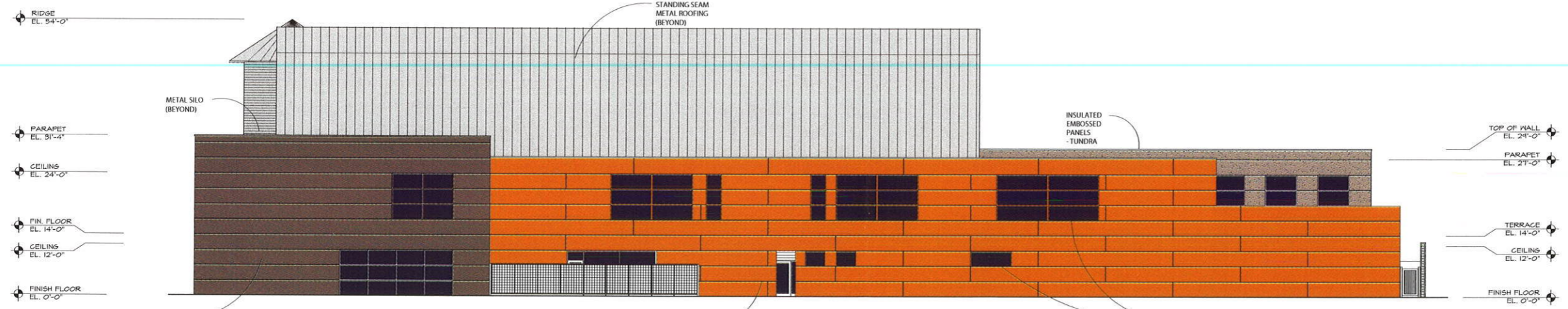
PRIMARY FACADE



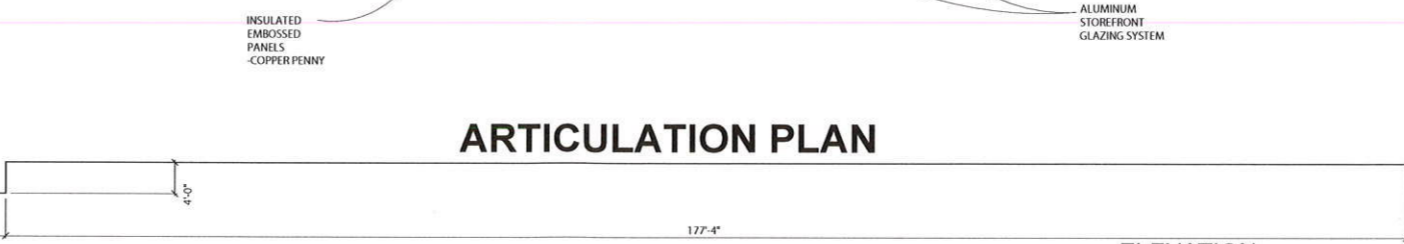
ELEVATION MATERIALS	
MATERIAL	AREA
INSULATED PANELS - CORRUGATED COPPER PENNY	1,865 S.F.
INSULATED EMBOSSED PANELS - WEATHERED ZINC	1,245 S.F.
INSULATED CORRUGATED METAL	635 S.F.
INSULATED EMBOSSED PANELS - TUNDRA	2,800 S.F.
GLAZING	700 S.F.
DECORATIVE METAL DOORS	600 S.F.
TOTAL	7,845 S.F.



1 ELEVATION
SCALE: 3/32"=1'-0"



ELEVATION MATERIALS	
MATERIAL	AREA
INSULATED EMBOSSED PANELS - WEATHERED ZINC	1,535 S.F.
INSULATED EMBOSSED PANELS - COPPER PENNY	3,665 S.F.
INSULATED EMBOSSED PANELS - TUNDRA	300 S.F.
GLAZING	1,100 S.F.
TOTAL	6,600 S.F.



2 ELEVATION
SCALE: 1/16"=1'-0"

Revisions:



02.18.2013

Consultant(s):



BWM GROUP
ARCHITECTURE | PLANNING |
LANDSCAPE ARCHITECTURE
102 E. MAIN, SUITE 200
ROUND ROCK, TX 78664
T: (512) 238-8912
F: (512) 238-8913
bwmgrp.com

OWNER:
CDA TEXAS HOLDINGS, LLC
1615 RUTHERFORD LANE
AUSTIN, TX 78754

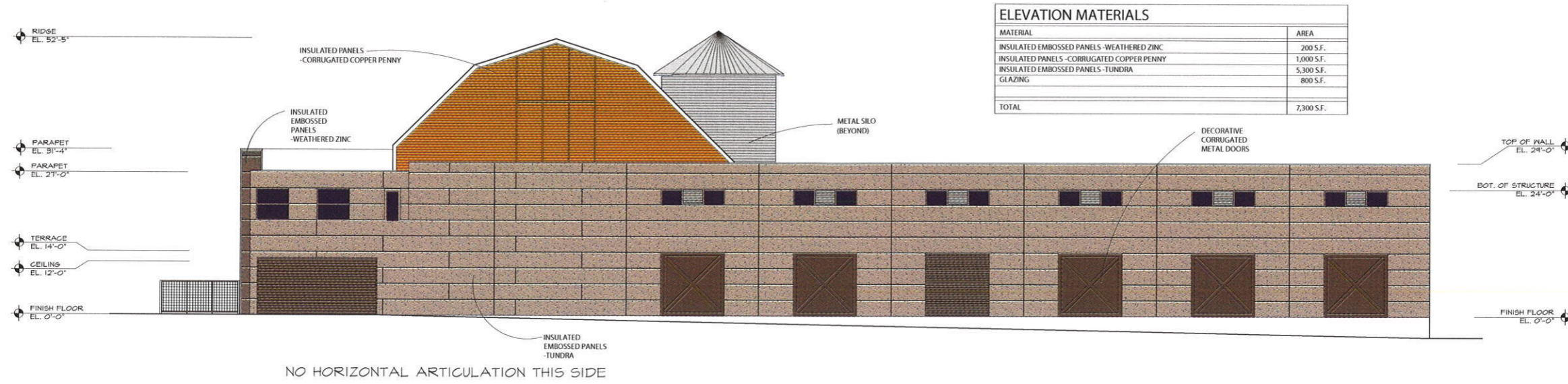
CONTRACTOR:

**NEW FACILITY FOR
EIEIO INC.
PFLUGERVILLE RENEWABLE ENERGY
RESOURCE PARK
PFLUGERVILLE, TX 78660**

Drawn by: DBR
Checked by: DBR
Approved by: DBR
Job Number: 12093
Date: 02/01/2013
Submission Type:
DESIGN DEVELOPMENT
Cad File:
Sheet Title:

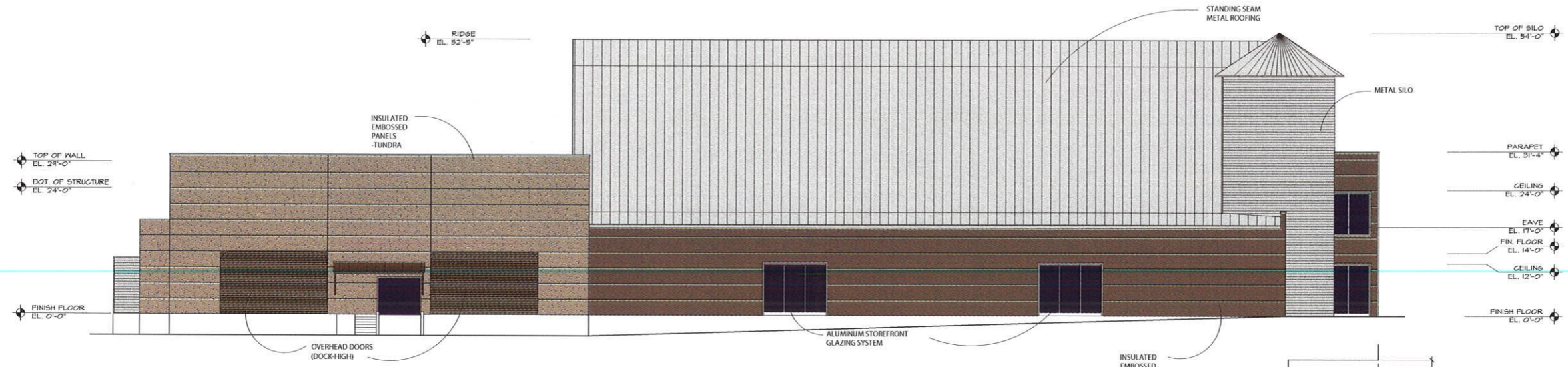
A301

© copyright 2012 bwmgroup



ELEVATION MATERIALS	
MATERIAL	AREA
INSULATED EMBOSSED PANELS - WEATHERED ZINC	200 S.F.
INSULATED PANELS - CORRUGATED COPPER PENNY	1,000 S.F.
INSULATED EMBOSSED PANELS - TUNDRA	5,300 S.F.
GLAZING	800 S.F.
TOTAL	7,300 S.F.

1 ELEVATION
SCALE: 3/32"=1'-0"



ELEVATION MATERIALS	
MATERIAL	AREA
INSULATED EMBOSSED PANELS - TUNDRA	2,000 S.F.
INSULATED EMBOSSED PANELS - WEATHERED ZINC	2,350 S.F.
O. H. D. AND DOORS	650 S.F.
GLAZING	800 S.F.
TOTAL	5,800 S.F.

2 ELEVATION
SCALE: 3/32"=1'-0"

Revisions:



02.18.2013

The Texas Board of Architectural Examiners is not responsible for the accuracy of the information contained herein. It is the responsibility of the user to verify the accuracy of the information.



ARCHITECTURE | PLANNING |
LANDSCAPE ARCHITECTURE
102 E. MAIN, SUITE 200
ROUND ROCK, TX 78664
T: (512) 238 8912
F: (512) 238 8913
bwmgrp.com

OWNER:
CDA TEXAS HOLDINGS, LLC
1615 RUTHERFORD LANE
AUSTIN, TX 78754

CONTRACTOR:

**NEW FACILITY FOR
EIEIO INC.
PFLUGERVILLE RENEWABLE ENERGY
RESOURCE PARK
PFLUGERVILLE, TX 78660**

Drawn by: DBR
Checked by: DBR
Approved by: DBR
Job Number: 12093
Date: 02/01/2013
Submittal Type:
DESIGN DEVELOPMENT
Cad File:
Sheet Title:

A302

© copyright 2012 bwmgroup