

**PROFESSIONAL SERVICES  
SUPPLEMENTAL AGREEMENT # 07  
FOR  
CENTRAL WASTEWATER TREATMENT PLANT EXPANSION**

**STATE OF TEXAS           §  
  §  
COUNTY OF TRAVIS       §**

This Supplemental Agreement No. 07 to a contract for Professional Services is made by and between the City of Pflugerville, Texas ("City") and Freese and Nichols, Inc. ("Consultant"). City and Consultant may be referred to herein singularly as "Party" or collectively as the "Parties."

WHEREAS, the City and Consultant executed an Agreement for Professional Services ("Agreement") on the 30th day of March, 2017 for the Central WWTP Expansion project ("Project") in the amount of \$375,806.00; and

WHEREAS, the City and Consultant executed a Supplemental Agreement # 01 for Professional Services on the 2 day of March 2018 extending the term, modifying the scope and schedule, and increasing by \$3,442,165 the amount payable under the Agreement for a total of \$3,817,971; and

WHEREAS, the City and Consultant executed a Supplemental Agreement # 02 for Professional Services on the 31 day of October 2018 modifying the scope and increasing by \$0 change; and

WHEREAS, the City and Consultant executed a Supplemental Agreement # 03 for Professional Services on the 19 day of December 2018 modifying the scope and increasing by \$29,155 the amount payable under the Agreement for a total of \$3,847,126; and

WHEREAS, the City and Consultant executed a Supplemental Agreement # 04 for Professional Services on the 24 day of May 2019 modifying the scope and increasing by \$44,485 the amount payable under the Agreement for a total of \$3,891,611; and

WHEREAS, the City and Consultant executed a Supplemental Agreement # 05 for Professional Services on the 18 day of November 2019 modifying the scope to add construction phase and post construction engineering services and increasing by \$1,309,800 the amount payable under the Agreement for a total of \$5,201,411; and

WHEREAS, the City and Consultant executed a Supplemental Agreement # 06 for Professional Services on the 19 day of January 2021 modifying the scope and increasing by \$18,566 the amount payable under the Agreement for a total of \$5,219,977.

WHEREAS, the City and Consultant desire to enter into a Supplemental Agreement # 07 for Professional Services for the Project in the amount of \$1,528,933, on the     day of May 2021 to add design phase effort for the completion of Phase II of the Central WWTP Expansion and effort under special services to evaluate electrical reliability and the addition of a secondary power

feed to the WWTP, evaluate options for expanding composting facilities, and complete the Department of Public Works Facilities Master Plan.

WHEREAS, it has become necessary to amend the Agreement to modify the provisions for the Term of the Agreement, Scope of Services, Work Schedule, and Compensation; and

WHEREAS, it is necessary for the City to amend its agreements from time to time to comply with changes in state law relating to contracts of municipalities.

NOW, THEREFORE, premises considered, the City and the Consultant agree that said Agreement is amended as follows:

**1.**

Article II. Term shall be amended by changing the term of the Agreement to terminate on December 31, 2023, with the ratification and incorporation of the remaining terms of the Agreement.

Article III. Scope of Services and Exhibit A, shall be amended as set forth in the attached addendum to Exhibit A.

Article III. Work Schedule and Exhibit B, shall be amended as set forth in the attached addendum to Exhibit B.

Article IV. Compensation to Consultant and Exhibit C (Fee Schedule), shall be amended by increasing by \$1,528,933 the amount payable under the Agreement for a total of \$6,748,910, as shown by the attached Addendum to Exhibit C (Fee Schedule).

**2.**

Except as amended hereby and as previously amended as indicated above, the terms of the Agreement shall remain unchanged and in full force and effect.

**EXECUTED and AGREED** to as of the dates indicated below.

**CITY OF  
PFLUGERVILLE**

**CONSULTANT**

\_\_\_\_\_  
(Signature)

  
\_\_\_\_\_  
(Signature)

Printed Name: Sereniah Breland

Printed Name: Kendall King, PE

Title: City Manager

Title: Principal/Vice President

Date: \_\_\_\_\_

Date: April 16, 2021

APPROVED AS TO FORM:



Charles E. Zech

City Attorney

DENTON NAVARRO ROCHA BERNAL & ZECH, P.C.<sup>2</sup>

**SUPPLEMENTAL AGREEMENT 07  
ADDENDUM TO EXHIBIT A – SCOPE OF WORK  
CENTRAL WASTEWATER TREATMENT PLANT EXPANSION/UPGRADE TO 8.25 MGD**

**PHASE II DESIGN SERVICES**

PROJECT UNDERSTANDING

**GENERAL DESCRIPTION OF CENTRAL WWTP EXPANSION PROJECT**

Under previous agreements, the City of Pflugerville retained Freese and Nichols, Inc. (FNI) for a Study Phase to evaluate the existing Central WWTP and develop recommendations for improvements for expansion of the facility to an annual average flow of 10.0 MGD. Upon presentation of the proposed improvements and an evaluation of the proposed Opinions of Probable Construction Costs (OPCCs) FNI was directed to develop a phased implementation plan for the expansion to allow capital costs to be distributed over several years. The phases of the plant construction are generally summarized below.

Expansion Phase	Capacity/ Permit Phase	Summary of Improvements
Phase I	7.25 MGD/ Interim I	Construction of a new influent pump station, headworks, Biological Nutrient Removal (BNR) treatment basins (No. 3 and 4), clarifier (No. 3), filters, UV disinfection system, non-potable water, and chemical feed systems. The construction includes three (3) new electrical buildings, two (2) diesel stand-by generators, improvements to the flood protection berm, general site civil improvements, electrical/communications upgrades, and improvements to site security and surveillance.
Phase II	8.5 MGD/ Interim II	Replacement of the equipment in the Aeration Basins No. 1 and 2 and the addition of basin volume and equipment to upgrade the units to a BNR process and rehabilitate Clarifiers No. 1 and 2. Construction of a new intermittent use effluent pump station which will enable the plant to discharge under high water level conditions in the receiving stream.
Phase III	10 MGD/Final	Construction of Final Clarifier No. 4 and capacity upgrades to the existing solids handling system.

Construction of Phase I of the Central Wastewater Treatment Plant Expansion is anticipated to be substantially complete by the end of 2021, and must be fully operational before Phase II construction can begin. The City has already experienced wastewater flows averaging over 75% of the Phase I permit capacity of the plant, therefore it is recommended that Phase II construction begin as soon as possible.

**DETAILED DESCRIPTION OF PHASE II SERVICES**

The scope of work for Phase II will include final design services to bring the plant capacity to 8.5 MGD and fully convert the original treatment trains to achieve biological nutrient removal (BNR). Bid Phase, Construction Phase, Start-up and Post Construction services will be covered under a separate Task Authorization.

As part of the Phase I project, equipment for the conversion of Aeration Basins No. 1 and No. 2 to a BNR process and the rehabilitation of Clarifiers No. 1 and No. 2 was preselected for both Phase I and Phase II. The preselection included price proposals for the equipment that will be escalated as described in the original contract documents. Therefore, the process structures will be designed around this preselected equipment.

The scope of work also includes separate investigations (as Special Services) to improve the overall electrical reliability of the plant and expand composting operations. Furthermore, the additional scope and effort to update and complete the Department of Public Works Master Plan is included as a Special Service. The scope of work is described in more detail below.

## **Phase II Final Design**

*Development of construction plans and specifications for the following plant improvements:*

- New influent lift station pump in existing wetwell constructed in Phase I (using same equipment selected for Phase I).
- New anaerobic/anoxic basins (2) to facilitate a BNR process through the original Aeration Basins No. 1 and 2 (using pre-selected equipment)
- Rehabilitation and modification of the original Aeration Basins No. 1 and 2, including:
  - Replacement of existing aerators with new pre-selected aerators
  - Reinforcement of center wall between the aeration basins (to allow basins to be drained independently)
  - Raising of exterior walls to meet TCEQ freeboard requirements
  - Replacement and expansion of effluent weir gates and weir gate box to accommodate increased flow
  - Replacement of existing fiberglass covers
  - Concrete crack repair
  - Removal of existing floating aerators (installed to augment existing aerators during Phase I construction) for storage and installation of provisions for anchorage and power at the basins to allow reinstallation of floating aerators for temporary use in the event of equipment failure or during maintenance in the future. .
- Rehabilitation of Clarifiers No. 1 and 2, including:
  - Replacement of existing mechanical equipment (using pre-selected equipment)
  - Concrete crack repair
- New effluent pump station
- Demolition of abandoned influent lift station and screening structure to clear space needed for the new anaerobic/anoxic basins
- Demolition of existing chlorine contact basin to 2' below grade elevation
- Improvements to existing area lighting by replacing existing fixtures
- Addition of backup power for Biosolids Building (New generator, relocated generator from EB-4, or tie-in to existing generator)
- Addition of secondary power feed provided by Oncor resulting from "Secondary Power Feed and Electrical Reliability" evaluation. *The effort to develop construction plans and specifications for the secondary power feed is included in Article II as a "Special Service".*
- Associated electrical, controls, and SCADA improvements
- Associated yard piping
- Associated drainage and paving improvements

## **Key Design Assumptions:**

- A geotechnical investigation for the site was prepared as part of the Phase I Expansion. The existing geotechnical report will be used for the design of Phase II.
- This project will be delivered using a single-step Competitive Sealed Proposals (CSP) process (No prequalification step). FNI will use FNI standard CSP contract documents and technical standards for drawings and technical specifications.

- The existing generators feeding Electrical Building No. 4 are old but have been determined by the City to be in working order and are regularly tested and maintained. Therefore, this project will not include the replacement of these generators.

### **Secondary Power Feed and Electrical Reliability Evaluation (Special Service)**

The Central Wastewater Treatment Plant is currently fed by a single Oncor overhead transmission line from which power is radially fed around the plant to three separate transformers. These transformers are backed up by diesel generators at each transformer, providing backup power for a majority of the key plant processes. The existing Biosolids Building, Field Operations Building, Public Works Administration Building, Fleet Maintenance Shop, Street Warehouse, Sign Shop, and other Public Works facilities at the site are not connected to the diesel generators and therefore do not have a backup power supply. Additionally, the City has experienced periodic outages at the plant adding to concerns about power reliability. As such, the City is interested in evaluating options to improve overall plant reliability, including the addition of a secondary Oncor power feed to the plant and associated transfer switch. The City also desires to provide a backup power source for the existing Biosolids Building, which is currently on its own dedicated power feed (without backup power).

FNI and their subconsultant Gupta and Associates (GAI) will evaluate alternatives for improving power reliability at the facility, including the following:

- Coordination with Oncor to conceptually evaluate the addition of a secondary power feed from a separate Oncor substation. This evaluation will consider options to tie the secondary feed into the existing plant power system, based on overall capital costs, maintenance considerations, and overall level of reliability.
- Evaluation of three additional improvements to tie existing facilities not currently on backup power into existing or new backup power sources
- Load analysis for generators at EB-4 to evaluate option of moving a generator to Biosolids Building.
- Evaluation of up to four (4) options to provide backup power to existing Biosolids Building

*Preparation of construction plans and specifications to provide a secondary power feed to the plant is included in Article II as a Special Service.*

### **Composting Operations Screening Level Analysis (Special Service)**

The City currently composts (windrow process) a small percentage of the dewatered biosolids at the Central WWTP and provides this compost at no cost to City residents at the adjacent recycling center. The remainder of the dewatered biosolids are hauled off-site for landfilling. The City is interested in considering options to expand the composting operations at the Central WWTP to provide additional compost to residents and reduce the overall quantity of dewatered solids hauled to the landfill.

FNI will complete a Screening Level Analysis of three options to improve/expand composting operations at the Central WWTP considering capital cost, operations and maintenance costs, buffer requirements, and potential for odor production. FNI will prepare an overall solids balance analysis and conceptual level site plan for each option. The screening level analysis will be documented in a technical memorandum as described in Article I. The three options to be considered are:

1. Expansion of existing windrow composting facility to community garden area
2. Addition of advanced solids process to produce Class A Biosolids (Autothermal Thermophilic Aerobic Digestion – ATAD or similar) prior to compost
3. Addition of thickening and/or digestion process to reduce overall solids volume for processing

### **Department of Public Works Facilities Master Plan (Special Service)**

In 2018, Freese and Nichols, Inc. (FNI), began a study for the City of Pflugerville leading to a Facilities Master Plan for the City's Department of Public Works (DPW). Shortly after beginning the study, the project was placed on hold due to internal changes in the Department. FNI has been asked to continue with the study with modifications to the scope. Information obtained previously and some tasks completed in early phases remain applicable to the revised scope. Some of the earlier tasks such as interviews will have to be revisited. Completed tasks and tasks to be revisited are indicated in Article I below.

The City of Pflugerville desires a Facilities Master Plan for the Department of Public Works (DPW) as the City's population grows from the current 60,000 to a future 160,000 residents. Currently, DPW is located at the City's Waste Water Treatment Plant (WWTP). Working with the City and DPW administration and officials, FNI will project the potential growth of the department in terms of number of staff and their roles, operational requirements such as number and types of vehicles, storage needs, etc. FNI will analyze the requirements and needs to provide facilities' recommendations for DPW and for the Parks Department which currently utilizes DPW facilities at the WWTP. For the Facilities Master Plan, the goal will be to determine the size and type of facilities required for DPW leading to a conceptual master plan on a greenfield site. Using the conceptual master plan, opportunities for relocating DPW to an expanded Water Treatment Plant (WTP) will be investigated.

## ARTICLE I

**BASIC SERVICES:** FNI shall render the following professional services in connection with the development of the Project:

- A. PROJECT MANAGEMENT AND ADMINISTRATIVE DUTIES: Upon execution of this AGREEMENT and upon receiving a Notice to Proceed from the CITY, FNI will provide the project management services for each phase as follows:
1. Project Controls: FNI shall manage scope, time, cost, quality, staff resources, communications, risk and procurements as necessary.
  2. Communication: Consult with the CITY throughout the project to see that the scope of services is being met and verify the CITY'S requirements for the project are satisfactory.
  3. Invoicing: FNI will prepare and submit invoices to the CITY.
  4. Monthly Status Reports: FNI will prepare and submit monthly status reports to the CITY with FNI's monthly invoice. Monthly status reports will comprise a one to two-page summary of the progress to date on the Project, work completed during the prior month, work anticipated to be completed during the upcoming month, and discussion of any scope, schedule, or budget issues that may need to be resolved.
  5. Project Schedule: FNI will maintain and update project design schedules.
  6. Quality Assurance / Quality Control: FNI will develop and implement a QA/QC plan for the work.
- B. DESIGN PHASE: FNI shall provide professional services in this phase as follows:
1. Meetings: Prepare agendas and minutes for all meetings described below.
    - a. Phase II Kick-Off Meeting (Virtual): FNI will conduct a Kick-Off Meeting with the City (1) to review the scope of services, (2) establish communications protocol, (3) review project schedule, (4) discuss and understand any other requirements or expectations the CITY may have for the project.
    - b. Client Monthly Progress Meetings (Virtual): Conduct monthly progress meetings with CITY, up to a maximum of twelve (12) meetings during the design phase.
    - c. Structural Condition Assessment Site Visit: Conduct up to four (4) structural condition assessment site visits to review the condition of the Aeration Basins No. 1 and 2 and Clarifiers No. 1 and 2. The structural assessment will be documented via memorandum.
    - d. Site Visits: Conduct up to three (3) additional site visits by the engineering team to the WWTP, for coordination on condition assessments and verification of as-built conditions
    - e. Design Review Workshops (Virtual): Conduct up to three (3) design review workshops at the 30%, 60% and 90% design level to review the construction documents, answer questions and receive comments from the CITY's project team.
    - f. Construction Sequencing Workshop (Virtual): Conduct one (1) Construction Sequencing Workshop during the 90% design phase to establish the sequence of construction and any special operating procedures required during construction to enable the required details to be incorporated into the construction documents.

2. 30% Design: *(For items described as Final Design under “Detailed Description of Phase II Services”)*
  - a. Design Basis Validation: Receive updated influent flow and loading data from City and analyze versus original design basis from Conceptual Design Report. Summarize findings and provide any recommendations for adjusting the design basis in technical memorandum.
  - b. Perform design calculations and required TCEQ Chapter 217 process calculations to size the treatment units. Document calculations and any proposed variances to TCEQ rules for regulatory approvals.
  - c. Prepare 30% design plans, including P&IDs, Site Plan, Yard Piping Plan, and plan views of all mechanical drawings and basic sections.
  - d. Prepare 30% specification list.
  - e. Prepare 30% Opinion of Probable Construction Costs (OPCC) (AACE Class 3).
  - f. Conduct internal quality control (QC) and constructability reviews at the 30% design level.
  - g. Incorporate all review comments from the City. Provide 30% comment response form.
3. 60% Design *(For items described as Final Design under “Detailed Description of Phase II Services”)*
  - a. Prepare 60% design plans
  - b. Prepare 60% project specifications
  - c. Prepare 60% OPCC (AACE Class 2)
  - d. Conduct internal quality control (QC) and constructability reviews at the 60% design level
  - e. Incorporate all review comments from the City and provide 60% comment response form.
4. 90% Design *(For items described as Final Design under “Detailed Description of Phase II Services”)*
  - a. Prepare 90% design plans
  - b. Prepare 90% project specifications
  - c. Prepare 90% OPCC (AACE Class 1)
  - d. Conduct internal quality control (QC) and constructability reviews at the 90% design level
  - e. Incorporate all review comments from the City and provide 90% comment response form.
5. Issued for Bid: Upon receipt of 90% comments from CITY, FNI shall prepare Issued for Bid set of documents.



6. Prepare a technical memorandum (TM) that updates the Central WWTP Expansion Phase I site drainage analysis with the Atlas 14 precipitation data.
7. Furnish CITY, when requested, the engineering data necessary for applications for routine permits required by local, state and federal authorities. Preparation of applications and supporting documents for government grants, TWDB or other funding is an Additional Service.
8. Submit Summary Transmittal Letter to the Texas Commission on Environmental Quality (TCEQ) for regulatory approval. As required, submit drawings, specifications, design documentation and Construction Contract Documents. No other submittals for regulatory or permitting reviews are anticipated or included in the Scope of Work.
9. Coordinate with and furnish such information necessary to utility companies whose facilities may be affected, or services may be required for the Project.
10. Assist CITY with determining the escalation of the purchase price for the Phase II BNR and Clarifier Equipment according to various price indices as described in the Phase I Expansion Equipment Pre-Selection Bid Documents and negotiation with the vendors to finalize the Phase II equipment purchase price. Assist with presentation to City Council as needed.
11. Deliverables:
  - a. Design Basis Validation Technical Memorandum
    - i. One (1) PDF electronic copy
  - b. 30% Design
    - i. One (1) PDF electronic copy of 30% plans
    - ii. One (1) PDF electronic copy of 30% specification list
    - iii. One (1) PDF electronic copy of 30% OPCC (AACE Class 3)
  - c. 60% Design
    - i. One (1) PDF electronic copy of 60% plans
    - ii. One (1) PDF electronic copy of 60% specifications
    - iii. One (1) PDF electronic copy of 60% OPCC (AACE Class 2)
  - d. 90% Design
    - i. One (1) PDF electronic copy of 90% plans
    - ii. One (1) PDF electronic copy of 90% specifications
    - iii. One (1) PDF electronic copy of 90% OPCC (AACE Class 1)
  - e. Issued for Bid

- i. One (1) PDF electronic copy of 100% plans
  - ii. One (1) PDF electronic copy of 100% specifications
  - iii. One (1) PDF electronic copy of 100% OPCC (AACE Class 1)
- f. Atlas 14 Technical Memorandum
- i. One (1) PDF electronic copy

## ARTICLE II

**SPECIAL SERVICES:** FNI shall render the following professional services, which are not included in the Basic Services described above, in connection with the development of the Project:

1. SECONDARY FEED AND ELECTRICAL RELIABILITY EVALUATION
  - a. Prepare a technical memorandum (TM) documenting findings from the Secondary Feed and Electrical Reliability Evaluation as described in “Detailed Description of Phase II Services” section above. Prepare conceptual level layouts and costs analyses of each alternative (AACE Class 4).
  - b. Secondary Power Feed and Electrical Reliability Workshop: Conduct one (1) workshop to consider the various options for improving electrical reliability at the facility.
  - c. Oncor Coordination Meetings (Virtual): Conduct up to two (2) coordination meetings with Oncor to discuss improvements to their power feed system.
  - d. Upon completion of the evaluation and selection of the preferred alternative, develop plans and technical specifications for the construction of the proposed improvements as part of the Phase II Expansion.
2. COMPOSTING OPERATIONS SCREENINGS LEVEL ANALYSIS
  - a. Prepare a technical memorandum (TM) documenting findings from the Composting Operations Screenings Level Analysis as described in “Detailed Description of Phase II Services” section above. Prepare conceptual level layouts and costs analyses of each alternative (AACE Class 4).
  - b. Composting Operations Screening Level Analysis Workshop: Conduct one (1) workshop to present findings and consider the options for expanding the Composting Operations at the Central WWTP.
3. SURVEY: Obtain the services of a licensed Land Surveyor to perform the following:
  - a. Topographic survey of the new Effluent Pump Station area for the purposes of defining the location and elevation of proposed pump station and piping, drainage patterns, and other information required for design of the Phase II WWTP Expansion.
  - b. Boundary survey and preparation of easement parcel plats and accompanying metes and bounds descriptions for up to two (2) locations to accommodate the secondary power feed from Oncor.
4. DEPARTMENT OF PUBLIC WORKS FACILITIES MASTER PLAN
  - a. Phase I – Discovery
    - i. Data collection and review: City will provide to FNI relevant project data including, but not limited to, existing DPW facilities’ floor and site plans, Parks Department locations, City maps, City Hall Master Plan, City and DPW organizational charts, City codes and standards, and Comprehensive Plan. FNI will review materials received from the City. (Completed)
    - ii. Project kick-off meeting in Pflugerville: FNI will conduct a comprehensive kick-off meeting in Pflugerville to introduce FNI team and City/DPW personnel. (Previously completed, to be Revisited)
    - iii. Interviews: FNI will conduct up to two total interview meetings over two consecutive days with selected City officials, DPW division heads, Parks Department administrators. Issues to be addressed will include functional, organizational, and

- operational requirements for the departments. (Previously completed, to be Revisited)
- iv. Site Visits: FNI will tour all existing facilities where DPW and Parks Department are located, including City Hall, and any other facilities and/or sites which may be utilized in the future. (Completed)
- b. Phase II – Programming
- i. Preliminary Needs Analysis: Based upon the interviews in Task 1.3 above, FNI will provide a summary of significant needs, rooms, sizes, functions, departmental organization and staffing, and intradepartmental relationships and adjacencies, parking requirements, and lay down areas. (Previously completed, to be Revisited)
  - ii. Facilities’ Assessments and Analysis: Based upon the interviews in Task 1.3 above and previous site visits in Task 1.4, FNI will document the existing facilities and other facilities including the WTP which may be available for use. (Partially completed).
  - iii. Analysis Review: In a one day follow-up meeting in Pflugerville, FNI will review the findings and recommendations of the Needs Analysis and Facilities’ Assessments and Analysis with the City and DPW. Based upon any comments received from the City, FNI will make any necessary adjustments.
  - iv. Draft Program: FNI will develop a draft detailed space program which may include the following:
    - 1. Type and amount of space required for administrative offices, open areas, conference/ training areas, and support areas.
    - 2. Recommendations on department’s internal organization.
    - 3. Recommendations on existing facilities’ renovations or expansions.
    - 4. Recommendations on potential new facilities.
    - 5. Recommendations on current inventory, warehousing, and lay-down needs.
    - 6. Recommendations on number and type (visitor, staff, City vehicle) of parking spaces, loading zones, and their locations.
  - v. Draft Program Review: FNI will conduct an in-person follow-up review meeting in Pflugerville of the draft program with the City.
  - vi. Final Program: Based upon any comments received in Task 2.5, FNI will prepare a final space program and distribute it to the City.
- c. Phase III- Concept Master Plan (estimated 6 weeks)
- i. Alternative Concept Master Plans: Based upon the Final Program in Task 2.6 above, FNI will prepare up to three (3) alternative concept master plans (floor and site) for a greenfield site. These alternative concept master plans will be in sketch form.
  - ii. Alternative Master Plans Review: In an in-person meeting in Pflugerville with the City, FNI will present each of the alternative concept master plans for a greenfield site. A preferred conceptual master plan will be selected for further refinement by FNI.
  - iii. Preferred Master Plan: The preferred conceptual master plan under Task 3.2 will be used for further development of DPW facilities at the Water Treatment Plant site. FNI will coordinate with the City’s WTP consultant regarding opportunities at the Water Treatment Plant. With input from the WTP consultant, FNI will develop a proposed DPW facilities master plan at the WTP.

- iv. Preferred Master Plan Review: In an in-person meeting in Pflugerville with the City, FNI will present the proposed DPW facilities master plan for the WTP site. Following the meeting, FNI will make any minor revisions to the DPW facilities master plan at the WTP site.
- d. Phase IV- Final Master Plan and Report (estimated 6 weeks after receipt of comments from the City on the Preferred Master Plan)
  - i. Draft Final Facility Master Plan and Report: FNI will prepare draft final master plan and report to include all findings and recommendations from previous tasks above. FNI will distribute to the City for review and comments.
  - ii. Opinion of Probable Construction Cost (OPCC): For the master plans, FNI will prepare an order of magnitude cost estimate (based upon square foot costs) for the facilities master plan at the WTP. This will be distributed to the City for review and comments along with the Draft in Task 4.1 above.
  - iii. Draft Final Facility Master Plan and Report Review: Through a conference call with the City, FNI will present the draft final facility master plan and report along with the associated OPCC.
  - iv. Final Facility Master Plan and Report: FNI will incorporate any comments received from the City on the draft master plan and report into the Final Facility Master Plan and Report.
  - v. Final Presentation: If requested by the City, FNI will make a final Facility Master Plan presentation to City Council.

### ARTICLE III

**ADDITIONAL SERVICES:** Any services performed by FNI that are not included in the Basic Services or Special Services described above are Additional Services. Additional Services to be performed by FNI, if authorized by Client, are described as follows:

1. Preparation of TCEQ Final Engineering Report if requested by TCEQ reviewer
2. Preparation of detailed design plans and specifications for the expansion of the existing compost area.
3. Preparation of detailed design plans and specifications for the permanent installation of the the Laboratory/Office Trailer at the site.
4. Bid Phase, Construction or Post Construction/Startup Phase Services for treatment plant expansion.
5. Field layouts or the furnishing of construction line and grade surveys.
6. Revising drawings, specifications or other documents when such revisions are 1) not consistent with approvals or instructions previously given by CITY or 2) due to other causes not solely within the control of FNI.
7. Investigations involving consideration of operation, maintenance and overhead expenses, and the preparation of rate schedules, earnings and expense statements, feasibility studies, appraisals, evaluations, assessment schedules, and material audits or inventories required for certification of force account construction performed by CITY.
8. Preparing applications and supporting documents for government grants, loans, or planning advances and providing data for detailed applications.
9. Conducting pilot plant studies or tests.

10. Providing environmental support services including the design and implementation of ecological baseline studies, environmental monitoring, impact assessment and analyses, permitting assistance (beyond the TPDES major amendment shown in Basic Services), and other assistance required to address environmental issues.
11. Providing basic or additional services on an accelerated time schedule. The scope of this service include cost for overtime wages of employees and consultants, inefficiencies in work sequence and plotting or reproduction costs directly attributable to an accelerated time schedule directed by the CITY.
12. Providing value engineering studies or reviews of cost savings proposed by construction contractors after bids have been submitted.

#### ARTICLE IV

**RESPONSIBILITIES OF CLIENT:** Client shall perform the following in a timely manner so as not to delay the services of FNI:

- A. Designate in writing a person to act as Client's representative with respect to the services to be rendered under this Agreement. Such person shall have contract authority to transmit instructions, receive information, interpret and define Client's policies and decisions with respect to FNI's services for the Project.
- B. Provide all criteria and full information as to Client's requirements for the Project, including design objectives and constraints, space, capacity and performance requirements, flexibility and expandability, and any budgetary limitations; and furnish copies of all design and construction standards which Client will require to be included in the drawings and specifications.
- C. Assist FNI by placing at FNI's disposal all available information pertinent to the Project including previous reports and any other data relative to design or construction of the Project.
- D. Arrange for access to and make all provisions for FNI to enter upon public and private property as required for FNI to perform services under this Agreement.
- E. Examine all studies, reports, sketches, drawings, specifications, proposals and other documents presented by FNI, obtain advice of an attorney, insurance counselor and other consultants as Client deems appropriate for such examination and render in writing decisions pertaining thereto within a reasonable time so as not to delay, or cause rework in, the services of FNI.
- F. Provide such accounting, independent cost estimating and insurance counseling services as may be required for the Project, such legal services as Client may require or FNI may reasonably request with regard to legal issues pertaining to the Project including any that may be raised by Contractor(s), such auditing service as Client may require to ascertain how or for what purpose any Contractor has used the moneys paid under the construction contract, and such inspection services as Client may require to ascertain that Contractor(s) are complying with any law, rule, regulation, ordinance, code or order applicable to their furnishing and performing the work.
- G. Attend the pre-bid conference, bid opening, preconstruction conferences, construction progress and other job-related meetings and substantial completion inspections and final payment inspections.

- H. Give prompt written notice to FNI whenever Client observes or otherwise becomes aware of any development that affects the scope or timing of FNI’s services, or any defect or nonconformance of the work of any Contractor.
- I. Bear all costs incident to compliance with the requirements of this Article IV.

**ADDENDUM TO EXHIBIT B – WORK SCHEDULE**

**TIME OF COMPLETION:** FNI is authorized to commence work on the Project upon execution of this Agreement and agrees to complete the services in accordance with the table below:

<b>Milestone/Deliverable</b>	<b>Completion Date</b>
<u>Basic Services</u>	
Design Validation TM	3 Weeks after NTP
30% Design Submittal	13 Weeks after NTP
60% Design Submittal	19 Weeks after receipt of comments from the City
90% Design Submittal	*13 Weeks after receipt of comments from the City
Issued for Bid Submittal	4 Weeks after receipt of comments from the City
<i>*90% submittal deadline is contingent upon progress of Phase I construction and completion of structural assessments of Aeration Basins No. 1 and 2 and Clarifiers No. 1 and 2.</i>	
<u>Special Services</u>	
Secondary Feed and Backup Power TM	12 Weeks after NTP
Composting Area Expansion TM	12 Weeks after NTP
Survey	
Effluent Pump Station Topo	4 Weeks after NTP
Easement Preparation	**TBD
DPW Facilities Master Plan Final Report	*21 Weeks after NTP
<i>*Based upon timely reviews and scheduling of meetings, comments, and approvals by City. ** Oncon easement preparation dependent on final coordination with Oncon for locations of electrical equipment.</i>	

If FNI’s services are delayed through no fault of FNI, FNI shall be entitled to adjust contract schedule consistent with the number of days of delay. These delays may include but are not limited to delays in Client or regulatory reviews, delays on the flow of information to be provided to FNI, governmental approvals, etc. These delays may result in an adjustment to compensation as outlined on the face of this Agreement and in Attachment CO.

<b>City of Pflugerville</b> <b>Central WWTP Expansion Phase II</b> <b>3/14/2021</b> <b>Detailed Cost Breakdown</b>		<b>Project Fee Summary</b>	
		<b>Basic Services</b>	\$ 1,350,495
		<b>Special Services</b>	\$ 178,438
		<b>Total Project</b>	\$ 1,528,933

\$ 6,748,910

Tasks																		
Phase	Task	Basic or Special	Task Description	Kendall King	Coby Gee	Chris Callahan	Renee Raines	Milton Arceneaux	Angela Penagos	Nick Landes	Gennady Boksiner	Marissa Mendoza	Derek Gianan	Thad Purcell	Douglas Herbst	Michael Robertson	Tran Duong	Josh Moore
				Project Principal	Project Manager	APM/ Project Engineer	Project Engineer	CAD Designer	CAD Tech	Process QC and Solids	QC	Operations Analyst	Scheduler	Construction QC	CSP	Structural PE	Structural EIT	Structural CAD
			<b>A. PROJECT MANAGEMENT AND ADMINISTRATIVE</b>															
			1. Project Controls	12	24													
			2. Communication	6	16													
			3. Invoicing		6	6						12						
			4. Monthly Status Reports		12	6												
			5. Project Schedule	4	16	4							12					
			6. Quality Assurance/Quality Control Management		40	4												
			Miscellaneous Internal PM	16	80	40	40											
			<b>B. DESIGN PHASE</b>															
			1. Meetings															
			a. Kick-Off Meeting (Virtual)	2	4	2	2									2	2	2
			b. Client Monthly Progress Meetings (12, Virtual)	12	12	12	6									6	6	
			c. Structural Condition Assessment Site Visit (4)													48	48	
			d. Site Visits (3)	6	9	9	6											
			e. Design Review Workshops (3, Virtual)	9	9	9	9											
			f. Construction Sequencing Workshop (Virtual)	2	2	2												
			g. Internal Project Team Meetings (Not shown in scope)	8	16	16	16	12								12	12	12
			2. 30% Design															
			a. Design Basis Validation (Technical Memorandum)		2	8	20				2							
			b. Design and TCEQ Process Calculations		2	8	20			2	2							
			c. Prepare 30% Design Plans		30	60	175	100	200							64	128	192
			d. Prepare 30% Specification List		2	4	4									2		
			e. Prepare 30% OPCC (AAACE Class 3)	2	4	8	12							8				
			f. QC/Constructability Reviews	8														
			g. Incorporate all review comments from the City and provide 60% comment response form.		4	4	6			16	16			4		2		
			3. 60% Design															
			a. Prepare 60% Design Plans		45	90	280	130	275							64	128	192
			b. Prepare 60% Specifications	4	14	36	80									16		
			c. Prepare 60% OPCC (AAACE Class 2)	2	4	8	12						16					
			d. QC/Constructability Reviews	8						16	16			16		2		
			e. Incorporate all review comments from the City and provide 60% comment response form.		4	4	6									4	4	
			4. 90% Design															
			a. Prepare 90% Design Plans		45	90	280	130	275							88	176	264
			b. Prepare 90% Specifications	8	12	32	60									12		
			c. Prepare 90% OPCC (AAACE Class 1)	4	8	16	24						8					
			d. QC/Constructability Reviews	8						40	16			40		2		
			e. Incorporate all review comments from the City and provide 60% comment response form.		4	4	6									4	4	
			5. Prepare Issued for Bid Documents		16	24	40	30	60							4	4	8
			6. Technical Memorandum: Update of Phase I WWTP Site Drainage based on Atlas 14 Data	1	1													
			7. Furnish City with engineering data necessary for routine permits.		2	4	8											
			8. Submit Summary Transmittal Letter to TCEQ		1	2	2											
			9. Coordination with utilities		4	4	8											
			10. Assist City with Phase II Price Escalation	12	12													
			11. Deliverables															
			a. Design Basis TM															
			b. 30% Design Submittal		1	1	2											
			c. 60% Design Submittal		1	2	4											
			d. 90% Design Submittal		1	2	4											
			e. IFB Submittal		1	2	4											
			f. Atlas 14 TM															
			<b>SPECIAL SERVICES</b>															
		Special	<b>1. SECONDARY FEED AND ELECTRICAL RELIABILITY EVALUATION</b>															
		Special	a. Prepare TM, layouts, and OPCCs		4	4												
		Special	b. Workshop with City	2	2	2	2											
		Special	c. Oncor Coordination Meetings		2	2	2											
		Special	d. Prepare final construction plans and specifications		8	8												
		Special	<b>2. COMPOSTING OPERATIONS SCREENINGS LEVEL ANALYSIS</b>															
		Special	a. Prepare TM, layouts, and OPCCs	8	24	45	100			45								
		Special	b. Workshop with City	4	8	8	8			8								
		Special	<b>3. SURVEY</b>															



<b>City of Pflugerville</b> <b>Central WWTP Expansion Phase II</b> <b>3/14/2021</b> <b>Detailed Cost Breakdown</b>	Project Fee Summary		
	Basic Services	\$	1,350,495
	Special Services	\$	178,438
	<b>Total Project</b>	<b>\$</b>	<b>1,528,933</b>

\$ 6,748,910

Tasks																		
Phase	Task	Basic or Special	Task Description	Kendall King	Coby Gee	Chris Callahan	Renee Raines	Milton Arceneaux	Angela Penagos	Nick Landes	Gennady Boksiner	Marissa Mendoza	Derek Gianan	Thad Purcell	Douglas Herbst	Michael Robertson	Tran Duong	Josh Moore
				Project Principal	Project Manager	APM/ Project Engineer	Project Engineer	CAD Designer	CAD Tech	Process QC and Solids	QC	Operations Analyst	Scheduler	Construction QC	CSP	Structural PE	Structural EIT	Structural CAD
	Special		a. Topo survey for effluent pump station		1	2												
	Special		b. Easements for Onco service		1	2												
	Special		<b>4. DPW FACILITIES MASTER PLAN</b>															
	Special		a. Phase I - Discovery															
	Special		i. Data collection and review															
	Special		ii. Project kick-off meeting in Pflugerville	1	1													
	Special		iii. Interviews															
	Special		iv. Site visits															
	Special		b. Phase II - Programming															
	Special		i. Preliminary needs analysis															
	Special		ii. Facilities' assessments and analysis															
	Special		iii. Analysis review															
	Special		iv. Draft program															
	Special		v. Draft program review	2	2													
	Special		vi. Final program															
	Special		c. Phase III - Concept Master Plan															
	Special		i. Alternative concept master plans															
	Special		ii. Alternative master plans review															
	Special		iii. Preferred master plan															
	Special		Coordination at WTP															
	Special		iv. Preferred master plan review															
	Special		d. Phase IV - Final Master Plan															
	Special		i. Draft final facility plan and report															
	Special		ii. OPCC															
	Special		iii. Draft final facility master plan and report review	4	4													
	Special		iv. Final facility master plan and report															
	Special		v. Final presentation															
<b>Total Hours / Quantity</b>				<b>155</b>	<b>523</b>	<b>596</b>	<b>1,248</b>	<b>402</b>	<b>810</b>	<b>127</b>	<b>52</b>	<b>12</b>	<b>12</b>	<b>92</b>	<b>16</b>	<b>339</b>	<b>519</b>	<b>670</b>
<b>Total Effort</b>				<b>\$ 37,200</b>	<b>\$ 109,307</b>	<b>\$ 92,976</b>	<b>\$ 170,976</b>	<b>\$ 61,506</b>	<b>\$ 77,760</b>	<b>\$ 22,606</b>	<b>\$ 12,480</b>	<b>\$ 1,776</b>	<b>\$ 1,776</b>	<b>\$ 15,916</b>	<b>\$ 3,840</b>	<b>\$ 60,342</b>	<b>\$ 71,103</b>	<b>\$ 64,320</b>

**City of Pflugerville**  
**Central WWTP Expansion Phase II**  
**3/14/2021**  
**Detailed Cost Breakdown**

Tasks			Labor															
Phase	Task	Basic or Special	Task Description	Julia Whitcraft	Peter Bartels	Brett Bristow	Christie Ubando	Keith Beatty	Isaac Wood	Jay Scanlon	Sarah West	Jeremy Branch	Noe Ortiz	Bob Pence	Leonard Ripley	Chad Simmons	Kirk Millican	Homer Saenz
				Structural CAD QC	Structural QC	Site Civil PE	Site CAD	Site QC	Site Civil EIT	Storm Water	Storm Water PE	Storm Water Project Engineer	Storm Water CAD	Senior Advisor	Solids Process Advisor	Solids Process QC	Programming	PM/Architect
			<b>A. PROJECT MANAGEMENT AND ADMINISTRATIVE</b>															
			1. Project Controls											8				
			2. Communication															
			3. Invoicing															
			4. Monthly Status Reports															
			5. Project Schedule															
			6. Quality Assurance/Quality Control Management											8				
			<i>Miscellaneous Internal PM</i>															
			<b>B. DESIGN PHASE</b>															
			1. Meetings															
			a. Kick-Off Meeting (Virtual)			2			2									
			b. Client Monthly Progress Meetings (12, Virtual)								2							
			c. Structural Condition Assessment Site Visit (4)															
			d. Site Visits (3)															
			e. Design Review Workshops (3, Virtual)															
			f. Construction Sequencing Workshop (Virtual)															
			g. Internal Project Team Meetings (Not shown in scope)			12					12							
			2. 30% Design															
			a. Design Basis Validation (Technical Memorandum)															
			b. Design and TCEQ Process Calculations															
			c. Prepare 30% Design Plans			16	16		16		3	30	20					
			d. Prepare 30% Specification List			2						1						
			e. Prepare 30% OPCC (AAACE Class 3)															
			f. QC/Constructability Reviews	12	20			3		2	4	4	4	8				
			g. Incorporate all review comments from the City and provide 60% comment response form.				3											
			3. 60% Design															
			a. Prepare 60% Design Plans			16	12		24		1	8	16					
			b. Prepare 60% Specifications			4					1	3						
			c. Prepare 60% OPCC (AAACE Class 2)															
			d. QC/Constructability Reviews	12	20			3		2	2	4	4	16				
			e. Incorporate all review comments from the City and provide 60% comment response form.				4											
			4. 90% Design															
			a. Prepare 90% Design Plans			24	24		16		1	4	4					
			b. Prepare 90% Specifications									2						
			c. Prepare 90% OPCC (AAACE Class 1)															
			d. QC/Constructability Reviews	16	28			4		1	1	2	2	24				
			e. Incorporate all review comments from the City and provide 60% comment response form.				4											
			5. Prepare Issued for Bid Documents			8	16		8		2	2	2					
			6. Technical Memorandum: Update of Phase I WWTP Site Drainage based on Atlas 14 Data								1	6						
			7. Furnish City with engineering data necessary for routine permits.															
			8. Submit Summary Transmittal Letter to TCEQ															
			9. Coordination with utilities															
			10. Assist City with Phase II Price Escalation															
			11. Deliverables															
			a. Design Basis TM															
			b. 30% Design Submittal															
			c. 60% Design Submittal															
			d. 90% Design Submittal															
			e. IFB Submittal															
			f. Atlas 14 TM															
			<b>SPECIAL SERVICES</b>															
		Special	<b>1. SECONDARY FEED AND ELECTRICAL RELIABILITY EVALUATION</b>															
		Special	a. Prepare TM, layouts, and OPCCs															
		Special	b. Workshop with City															
		Special	c. Oncor Coordination Meetings															
		Special	d. Prepare final construction plans and specifications															
		Special	<b>2. COMPOSTING OPERATIONS SCREENINGS LEVEL ANALYSIS</b>															
		Special	a. Prepare TM, layouts, and OPCCs												20	12		
		Special	b. Workshop with City															
		Special	<b>3. SURVEY</b>															

**City of Pflugerville**  
**Central WWTP Expansion Phase II**  
**3/14/2021**  
**Detailed Cost Breakdown**

Tasks			Labor																
Phase	Task	Basic or Special	Task Description	Julia Whitcraft	Peter Bartels	Brett Bristow	Christie Ubando	Keith Beatty	Isaac Wood	Jay Scanlon	Sarah West	Jeremy Branch	Noe Ortiz	Bob Pence	Leonard Ripley	Chad Simmons	Kirk Millican	Homer Saenz	
				Structural CAD QC	Structural QC	Site Civil PE	Site CAD	Site QC	Site Civil EIT	Storm Water	Storm Water PE	Storm Water Project Engineer	Storm Water CAD	Senior Advisor	Solids Process Advisor	Solids Process QC	Programming	PM/Architect	
	Special		a. Topo survey for effluent pump station																
	Special		b. Easements for Oncor service																
	Special		<b>4. DPW FACILITIES MASTER PLAN</b>																
	Special		a. Phase I - Discovery																
	Special		i. Data collection and review																4
	Special		ii. Project kick-off meeting in Pflugerville																
	Special		iii. Interviews														10	10	
	Special		iv. Site visits														10	10	
	Special		b. Phase II - Programming																
	Special		i. Preliminary needs analysis														2	8	
	Special		ii. Facilities' assessments and analysis														2	4	
	Special		iii. Analysis review														10	10	
	Special		iv. Draft program														2	8	
	Special		v. Draft program review														10	10	
	Special		vi. Final program														2	8	
	Special		c. Phase III - Concept Master Plan																
	Special		i. Alternative concept master plans														4	12	
	Special		ii. Alternative master plans review														10	10	
	Special		iii. Preferred master plan														4	8	
	Special		Coordination at WTP														2	8	
	Special		iv. Preferred master plan review														10	10	
	Special		d. Phase IV - Final Master Plan																
	Special		i. Draft final facility plan and report														4	16	
	Special		ii. OPCC																2
	Special		iii. Draft final facility master plan and report review														2	2	
	Special		iv. Final facility master plan and report														4	8	
	Special		v. Final presentation														10	10	
<b>Total Hours / Quantity</b>				<b>40</b>	<b>68</b>	<b>84</b>	<b>79</b>	<b>10</b>	<b>66</b>	<b>5</b>	<b>30</b>	<b>66</b>	<b>52</b>	<b>64</b>	<b>20</b>	<b>12</b>	<b>98</b>	<b>158</b>	
<b>Total Effort</b>				<b>\$ 6,120</b>	<b>\$ 14,212</b>	<b>\$ 17,556</b>	<b>\$ 12,087</b>	<b>\$ 2,400</b>	<b>\$ 9,042</b>	<b>\$ 1,200</b>	<b>\$ 6,270</b>	<b>\$ 10,296</b>	<b>\$ 7,956</b>	<b>\$ 11,200</b>	<b>\$ 4,800</b>	<b>\$ 2,880</b>	<b>\$ 23,520</b>	<b>\$ 28,124</b>	

**City of Pflugerville  
Central WWTP Expansion Phase II  
3/14/2021  
Detailed Cost Breakdown**

Tasks			Chelsea Thorn	Parris Jones	Dave Kiel	Jesus Gonzalez	Jessica Vassar	John Manning	Total Hours	Total Labor Effort	
Phase	Task	Basic or Special	APM/Architect	QC	SA	Cost	Engineer	Electrical QC			
			<b>A. PROJECT MANAGEMENT AND ADMINISTRATIVE</b>								\$ -
									44	\$ 9,296	
									22	\$ 4,784	
									24	\$ 3,966	
									18	\$ 3,444	
									36	\$ 6,704	
									52	\$ 10,384	
									176	\$ 32,280	
										\$ -	
			<b>B. DESIGN PHASE</b>								\$ -
			1. Meetings								\$ -
			a. Kick-Off Meeting (Virtual)							20	\$ 3,416
			b. Client Monthly Progress Meetings (12, Virtual)							56	\$ 10,390
			c. Structural Condition Assessment Site Visit (4)							96	\$ 15,120
			d. Site Visits (3)							30	\$ 5,547
			e. Design Review Workshops (3, Virtual)							42	\$ 7,623
			f. Construction Sequencing Workshop (Virtual)							6	\$ 1,210
			g. Internal Project Team Meetings (Not shown in scope)							128	\$ 21,736
			2. 30% Design								\$ -
			a. Design Basis Validation (Technical Memorandum)							32	\$ 4,886
			b. Design and TCEQ Process Calculations							34	\$ 5,242
			c. Prepare 30% Design Plans							1,050	\$ 137,816
			d. Prepare 30% Specification List							15	\$ 2,520
			e. Prepare 30% OPCC (AAACE Class 3)							34	\$ 5,592
			f. QC/Constructability Reviews						8	111	\$ 22,016
			g. Incorporate all review comments from the City and provide 60% comment response form.							25	\$ 4,001
			3. 60% Design								\$ -
			a. Prepare 60% Design Plans							1,281	\$ 167,828
			b. Prepare 60% Specifications							158	\$ 24,823
			c. Prepare 60% OPCC (AAACE Class 2)							42	\$ 6,976
			d. QC/Constructability Reviews						16	137	\$ 26,746
			e. Incorporate all review comments from the City and provide 60% comment response form.							26	\$ 4,154
			4. 90% Design								\$ -
			a. Prepare 90% Design Plans							1,421	\$ 185,540
			b. Prepare 90% Specifications							126	\$ 20,088
			c. Prepare 90% OPCC (AAACE Class 1)							60	\$ 9,800
			d. QC/Constructability Reviews						24	208	\$ 39,699
			e. Incorporate all review comments from the City and provide 60% comment response form.							26	\$ 4,154
			5. Prepare Issued for Bid Documents							224	\$ 31,198
			6. Technical Memorandum: Update of Phase I WWTP Site Drainage based on Atlas 14 Data							9	\$ 1,594
			7. Furnish City with engineering data necessary for routine permits.							14	\$ 2,138
			8. Submit Summary Transmittal Letter to TCEQ							5	\$ 795
			9. Coordination with utilities							16	\$ 2,556
			10. Assist City with Phase II Price Escalation							40	\$ 9,228
			11. Deliverables								\$ -
			a. Design Basis TM								\$ -
			b. 30% Design Submittal							4	\$ 639
			c. 60% Design Submittal							7	\$ 1,069
			d. 90% Design Submittal							7	\$ 1,069
			e. IFB Submittal							7	\$ 1,069
			f. Atlas 14 TM								\$ -
			<b>SPECIAL SERVICES</b>								\$ -
		Special	<b>1. SECONDARY FEED AND ELECTRICAL RELIABILITY EVALUATION</b>								\$ -
		Special	a. Prepare TM, layouts, and OPCCs							8	\$ 1,460
		Special	b. Workshop with City							8	\$ 1,484
		Special	c. Oncor Coordination Meetings							6	\$ 1,004
		Special	d. Prepare final construction plans and specifications						2	18	\$ 3,338
											\$ -
		Special	<b>2. COMPOSTING OPERATIONS SCREENINGS LEVEL ANALYSIS</b>								\$ -
		Special	a. Prepare TM, layouts, and OPCCs							254	\$ 43,346
		Special	b. Workshop with City							36	\$ 6,400
											\$ -
		Special	<b>3. SURVEY</b>								\$ -

**City of Pflugerville**  
**Central WWTP Expansion Phase II**  
**3/14/2021**  
**Detailed Cost Breakdown**

Tasks											
Phase	Task	Basic or Special	Task Description	Chelsea Thorn	Parris Jones	Dave Kiel	Jesus Gonzalez	Jessica Vassar	John Manning	Total Hours	Total Labor Effort
				APM/Architect	QC	SA	Cost	Engineer	Electrical QC		
		Special	a. Topo survey for effluent pump station							3	\$ 521
		Special	b. Easements for Oncor service							3	\$ 521
											\$ -
		Special	<b>4. DPW FACILITIES MASTER PLAN</b>								\$ -
		Special	a. Phase I - Discovery								\$ -
		Special	i. Data collection and review			1				5	\$ 887
		Special	ii. Project kick-off meeting in Pflugerville							2	\$ 449
		Special	iii. Interviews					4		24	\$ 5,016
		Special	iv. Site visits							20	\$ 4,180
		Special	b. Phase II - Programming								\$ -
		Special	i. Preliminary needs analysis			2				12	\$ 2,254
		Special	ii. Facilities' assessments and analysis							6	\$ 1,192
		Special	iii. Analysis review					4		24	\$ 5,016
		Special	iv. Draft program	4						14	\$ 2,528
		Special	v. Draft program review					4		28	\$ 5,914
		Special	vi. Final program	4	2					16	\$ 3,008
		Special	c. Phase III - Concept Master Plan								\$ -
		Special	i. Alternative concept master plans	24		2				42	\$ 7,190
		Special	ii. Alternative master plans review					4		24	\$ 5,016
		Special	iii. Preferred master plan	12						24	\$ 4,256
		Special	Coordination at WTP	12				4		26	\$ 4,612
		Special	iv. Preferred master plan review					4		24	\$ 5,016
		Special	d. Phase IV - Final Master Plan								\$ -
		Special	i. Draft final facility plan and report	32						52	\$ 8,800
		Special	ii. OPCC				20			22	\$ 3,116
		Special	iii. Draft final facility master plan and report review					2		14	\$ 3,050
		Special	iv. Final facility master plan and report	20	4					36	\$ 6,464
		Special	v. Final presentation					4		24	\$ 5,016
											\$ -
<b>Total Hours / Quantity</b>				<b>108</b>	<b>6</b>	<b>5</b>	<b>20</b>	<b>30</b>	<b>50</b>	<b>6,644</b>	
<b>Total Effort</b>				<b>\$ 16,848</b>	<b>\$ 1,440</b>	<b>\$ 875</b>	<b>\$ 2,760</b>	<b>\$ 6,270</b>	<b>\$ 10,450</b>		<b>\$ 1,000,190</b>

<b>City of Pflugerville</b> <b>Central WWTP Expansion Phase II</b> <b>3/14/2021</b> <b>Detailed Cost Breakdown</b>	<b>Project Fee Summary</b>		
	Basic Services		1,350,495
	Special Services		178,438
	<b>Total Project</b>		<b>1,528,933</b>

Tasks			Expenses										Total Expense Effort		
Phase	Task	Basic or Special	Task Description	Tech Charge	Miles	Meals	Hotel	B&W (sheet)	Color (sheet)	Binding (each)	Lg Format - Bond - B&W (sq. ft.)	Lg Format - Glossy/Mylar - B&W (sq. ft.)		Other	
			<b>A. PROJECT MANAGEMENT AND ADMINISTRATIVE</b>												\$ -
			1. Project Controls	44											\$ -
			2. Communication	22											\$ -
			3. Invoicing	24											\$ -
			4. Monthly Status Reports	18											\$ -
			5. Project Schedule	36											\$ -
			6. Quality Assurance/Quality Control Management	52											\$ -
			Miscellaneous Internal PM	176											\$ -
			<b>B. DESIGN PHASE</b>												\$ -
			1. Meetings												\$ -
			a. Kick-Off Meeting (Virtual)	20											\$ -
			b. Client Monthly Progress Meetings (12, Virtual)	56											\$ -
			c. Structural Condition Assessment Site Visit (4)	96	1,400	100									\$ 899
			d. Site Visits (3)	30	108										\$ 60
			e. Design Review Workshops (3, Virtual)	42											\$ -
			f. Construction Sequencing Workshop (Virtual)	6											\$ -
			g. Internal Project Team Meetings (Not shown in scope)	128											\$ -
			2. 30% Design												\$ -
			a. Design Basis Validation (Technical Memorandum)	32											\$ -
			b. Design and TCEQ Process Calculations	34											\$ -
			c. Prepare 30% Design Plans	1,050											\$ -
			d. Prepare 30% Specification List	15											\$ -
			e. Prepare 30% OPCC (AAACE Class 3)	34											\$ -
			f. QC/Constructability Reviews	111											\$ -
			g. Incorporate all review comments from the City and provide 60% comment response form.	25											\$ -
			3. 60% Design												\$ -
			a. Prepare 60% Design Plans	1,281											\$ -
			b. Prepare 60% Specifications	158											\$ -
			c. Prepare 60% OPCC (AAACE Class 2)	42											\$ -
			d. QC/Constructability Reviews	137											\$ -
			e. Incorporate all review comments from the City and provide 60% comment response form.	26											\$ -
			4. 90% Design												\$ -
			a. Prepare 90% Design Plans	1,421											\$ -
			b. Prepare 90% Specifications	126											\$ -
			c. Prepare 90% OPCC (AAACE Class 1)	60											\$ -
			d. QC/Constructability Reviews	208											\$ -
			e. Incorporate all review comments from the City and provide 60% comment response form.	26											\$ -
			5. Prepare Issued for Bid Documents	224					1,400	10	600				\$ 293
			6. Technical Memorandum: Update of Phase I WWTP Site Drainage based on Atlas 14 Data	9											\$ -
			7. Furnish City with engineering data necessary for routine permits.	14											\$ -
			8. Submit Summary Transmittal Letter to TCEQ	5											\$ -
			9. Coordination with utilities	16											\$ -
			10. Assist City with Phase II Price Escalation	40											\$ -
			11. Deliverables												\$ -
			a. Design Basis TM												\$ -
			b. 30% Design Submittal	4											\$ -
			c. 60% Design Submittal	7											\$ -
			d. 90% Design Submittal	7											\$ -
			e. IFB Submittal	7											\$ -
			f. Atlas 14 TM												\$ -
			<b>SPECIAL SERVICES</b>												\$ -
			<b>1. SECONDARY FEED AND ELECTRICAL RELIABILITY EVALUATION</b>												\$ -
		Special	a. Prepare TM, layouts, and OPCCs	8											\$ -
		Special	b. Workshop with City	8											\$ -
		Special	c. Oncor Coordination Meetings	6											\$ -
		Special	d. Prepare final construction plans and specifications	18											\$ -
			<b>2. COMPOSTING OPERATIONS SCREENINGS LEVEL ANALYSIS</b>												\$ -
		Special	a. Prepare TM, layouts, and OPCCs	254											\$ -
		Special	b. Workshop with City	36											\$ -
			<b>3. SURVEY</b>												\$ -

<b>City of Pflugerville</b> <b>Central WWTP Expansion Phase II</b> <b>3/14/2021</b> <b>Detailed Cost Breakdown</b>	<b>Project Fee Summary</b>	
	<b>Basic Services</b>	1,350,495
	<b>Special Services</b>	178,438
	<b>Total Project</b>	1,528,933

Tasks				Expenses								Total Expense Effort			
Phase	Task	Basic or Special	Task Description	Tech Charge	Miles	Meals	Hotel	B&W (sheet)	Color (sheet)	Binding (each)	Lg Format - Bond - B&W (sq. ft.)		Lg Format - Glossy/Mylar - B&W (sq. ft.)	Other	
		Special	a. Topo survey for effluent pump station	3											\$ -
		Special	b. Easements for Oncor service	3											\$ -
															\$ -
		Special	<b>4. DPW FACILITIES MASTER PLAN</b>												\$ -
		Special	a. Phase I - Discovery												\$ -
		Special	i. Data collection and review	5											\$ -
		Special	ii. Project kick-off meeting in Pflugerville	2	500	100	400								\$ 855
		Special	iii. Interviews	24											\$ -
		Special	iv. Site visits	20											\$ -
		Special	b. Phase II - Programming												\$ -
		Special	i. Preliminary needs analysis	12											\$ -
		Special	ii. Facilities' assessments and analysis	6											\$ -
		Special	iii. Analysis review	24	500	40									\$ 326
		Special	iv. Draft program	14											\$ -
		Special	v. Draft program review	28	500	40									\$ 326
		Special	vi. Final program	16											\$ -
		Special	c. Phase III - Concept Master Plan												\$ -
		Special	i. Alternative concept master plans	42											\$ -
		Special	ii. Alternative master plans review	24	500	40									\$ 326
		Special	iii. Preferred master plan	24											\$ -
		Special	Coordination at WTP	26	500	40									\$ 326
		Special	iv. Preferred master plan review	24	500	40									\$ 326
		Special	d. Phase IV - Final Master Plan												\$ -
		Special	i. Draft final facility plan and report	52											\$ -
		Special	ii. OPCC	22											\$ -
		Special	iii. Draft final facility master plan and report review	14											\$ -
		Special	iv. Final facility master plan and report	36											\$ -
		Special	v. Final presentation	24	500	40							150		\$ 499
															\$ -
<b>Total Hours / Quantity</b>				<b>6,644</b>	<b>5,008</b>	<b>440</b>	<b>400</b>	<b>1,400</b>	<b>-</b>	<b>10</b>	<b>600</b>	<b>-</b>	<b>150</b>		
<b>Total Effort</b>				<b>\$ -</b>	<b>\$ 2,804</b>	<b>\$ 506</b>	<b>\$ 460</b>	<b>\$ 140</b>	<b>\$ -</b>	<b>\$ 3</b>	<b>\$ 150</b>	<b>\$ -</b>	<b>\$ 173</b>		<b>\$ 4,235</b>

<b>City of Pflugerville</b> <b>Central WWTP Expansion Phase II</b> <b>3/14/2021</b> <b>Detailed Cost Breakdown</b>	<b>Project Fee Summary</b>	
	<b>Basic Services</b>	1,350,495
	<b>Special Services</b>	178,438
	<b>Total Project</b>	1,528,933

Tasks			Subconsultants										Total		
Phase	Task	Basic or Special	Task Description	GAI	Inland Geodetics	Budget Remaining Facilities MP	Sub Name 4	Sub Name 5	Sub Name 6	Sub Name 7	Sub Name 8	Sub Name 9	Sub Name 10	Total Sub Effort	Total Effort
			<b>A. PROJECT MANAGEMENT AND ADMINISTRATIVE</b>											\$ -	\$ -
			1. Project Controls											\$ -	\$ 9,296
			2. Communication											\$ -	\$ 4,784
			3. Invoicing	11,250										\$ 12,938	\$ 16,904
			4. Monthly Status Reports											\$ -	\$ 3,444
			5. Project Schedule											\$ -	\$ 6,704
			6. Quality Assurance/Quality Control Management											\$ -	\$ 10,384
			<i>Miscellaneous Internal PM</i>											\$ -	\$ 32,280
			<b>B. DESIGN PHASE</b>											\$ -	\$ -
			1. Meetings											\$ -	\$ -
			a. Kick-Off Meeting (Virtual)	1,000										\$ 1,150	\$ 4,566
			b. Client Monthly Progress Meetings (12, Virtual)	6,000										\$ 6,900	\$ 17,290
			c. Structural Condition Assessment Site Visit (4)	5,000										\$ 5,750	\$ 21,769
			d. Site Visits (3)	6,000										\$ 6,900	\$ 12,507
			e. Design Review Workshops (3, Virtual)	1,000										\$ 1,150	\$ 8,773
			f. Construction Sequencing Workshop (Virtual)	1,200										\$ 1,380	\$ 2,590
			g. Internal Project Team Meetings (Not shown in scope)	10,500										\$ 12,075	\$ 33,811
			2. 30% Design											\$ -	\$ -
			a. Design Basis Validation (Technical Memorandum)											\$ -	\$ 4,886
			b. Design and TCEQ Process Calculations											\$ -	\$ 5,242
			c. Prepare 30% Design Plans	95,751										\$ 110,114	\$ 247,930
			d. Prepare 30% Specification List	1,920										\$ 2,208	\$ 4,728
			e. Prepare 30% OPCC (AAACE Class 3)	3,840										\$ 4,416	\$ 10,008
			f. QC/Constructability Reviews	960										\$ 1,104	\$ 23,120
			g. Incorporate all review comments from the City and provide 60% comment response form.	4,800										\$ 5,520	\$ 9,521
			3. 60% Design											\$ -	\$ -
			a. Prepare 60% Design Plans	95,751										\$ 110,114	\$ 277,942
			b. Prepare 60% Specifications	14,400										\$ 16,560	\$ 41,383
			c. Prepare 60% OPCC (AAACE Class 2)	7,200										\$ 8,280	\$ 15,256
			d. QC/Constructability Reviews	1,920										\$ 2,208	\$ 28,954
			e. Incorporate all review comments from the City and provide 60% comment response form.	4,800										\$ 5,520	\$ 9,674
			4. 90% Design											\$ -	\$ -
			a. Prepare 90% Design Plans	95,751										\$ 110,114	\$ 295,654
			b. Prepare 90% Specifications	9,600										\$ 11,040	\$ 31,128
			c. Prepare 90% OPCC (AAACE Class 1)	4,100										\$ 4,715	\$ 14,515
			d. QC/Constructability Reviews	1,920										\$ 2,208	\$ 41,907
			e. Incorporate all review comments from the City and provide 60% comment response form.	4,800										\$ 5,520	\$ 9,674
			5. Prepare Issued for Bid Documents	36,717										\$ 42,225	\$ 73,715
			6. Technical Memorandum: Update of Phase I WWTP Site Drainage based on Atlas 14 Data											\$ -	\$ 1,594
			7. Furnish City with engineering data necessary for routine permits.											\$ -	\$ 2,138
			8. Submit Summary Transmittal Letter to TCEQ											\$ -	\$ 795
			9. Coordination with utilities											\$ -	\$ 2,556
			10. Assist City with Phase II Price Escalation											\$ -	\$ 9,228
			11. Deliverables											\$ -	\$ -
			a. Design Basis TM											\$ -	\$ -
			b. 30% Design Submittal											\$ -	\$ 639
			c. 60% Design Submittal											\$ -	\$ 1,069
			d. 90% Design Submittal											\$ -	\$ 1,069
			e. IFB Submittal											\$ -	\$ 1,069
			f. Atlas 14 TM											\$ -	\$ -
			<b>SPECIAL SERVICES</b>											\$ -	\$ -
		Special	<b>1. SECONDARY FEED AND ELECTRICAL RELIABILITY EVALUATION</b>											\$ -	\$ -
		Special	a. Prepare TM, layouts, and OPCCs	24,500										\$ 28,175	\$ 29,635
		Special	b. Workshop with City	1,250										\$ 1,438	\$ 2,922
		Special	c. Oncor Coordination Meetings	1,000										\$ 1,150	\$ 2,154
		Special	d. Prepare final construction plans and specifications	8,500										\$ 9,775	\$ 13,113
														\$ -	\$ -
		Special	<b>2. COMPOSTING OPERATIONS SCREENINGS LEVEL ANALYSIS</b>											\$ -	\$ -
		Special	a. Prepare TM, layouts, and OPCCs	5,500										\$ 6,325	\$ 49,671
		Special	b. Workshop with City											\$ -	\$ 6,400
														\$ -	\$ -
		Special	<b>3. SURVEY</b>											\$ -	\$ -

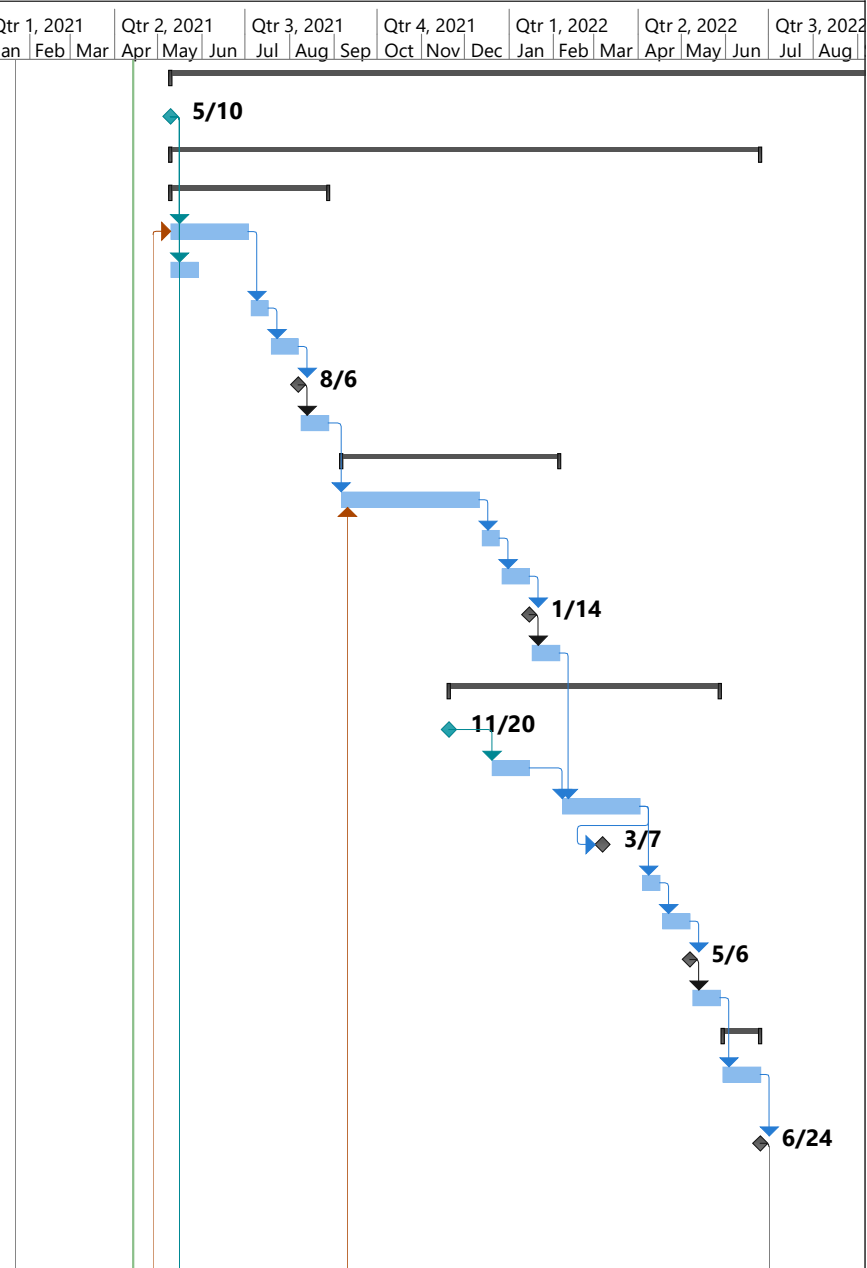


<b>City of Pflugerville</b> <b>Central WWTP Expansion Phase II</b> <b>3/14/2021</b> <b>Detailed Cost Breakdown</b>	<b>Project Fee Summary</b>	
	<b>Basic Services</b>	1,350,495
	<b>Special Services</b>	178,438
	<b>Total Project</b>	1,528,933

Tasks			Subconsultants										Total		
Phase	Task	Basic or Special	Task Description	GAI	Inland Geodetics	Budget Remaining Facilities MP	Sub Name 4	Sub Name 5	Sub Name 6	Sub Name 7	Sub Name 8	Sub Name 9	Sub Name 10	Total Sub Effort	Total Effort
	Special		a. Topo survey for effluent pump station		1,600									\$ 1,840	\$ 2,361
	Special		b. Easements for Oncon service		12,000									\$ 13,800	\$ 14,321
														\$ -	\$ -
	Special		<b>4. DPW FACILITIES MASTER PLAN</b>			-28,102								\$ (28,102)	\$ (28,102)
	Special		a. Phase I - Discovery											\$ -	\$ -
	Special		i. Data collection and review											\$ -	\$ 887
	Special		ii. Project kick-off meeting in Pflugerville											\$ -	\$ 1,304
	Special		iii. Interviews											\$ -	\$ 5,016
	Special		iv. Site visits											\$ -	\$ 4,180
	Special		b. Phase II - Programming											\$ -	\$ -
	Special		i. Preliminary needs analysis											\$ -	\$ 2,254
	Special		ii. Facilities' assessments and analysis											\$ -	\$ 1,192
	Special		iii. Analysis review											\$ -	\$ 5,342
	Special		iv. Draft program											\$ -	\$ 2,528
	Special		v. Draft program review											\$ -	\$ 6,240
	Special		vi. Final program											\$ -	\$ 3,008
	Special		c. Phase III - Concept Master Plan											\$ -	\$ -
	Special		i. Alternative concept master plans											\$ -	\$ 7,190
	Special		ii. Alternative master plans review											\$ -	\$ 5,342
	Special		iii. Preferred master plan											\$ -	\$ 4,256
	Special		Coordination at WTP											\$ -	\$ 4,938
	Special		iv. Preferred master plan review											\$ -	\$ 5,342
	Special		d. Phase IV - Final Master Plan											\$ -	\$ -
	Special		i. Draft final facility plan and report											\$ -	\$ 8,800
	Special		ii. OPCC											\$ -	\$ 3,116
	Special		iii. Draft final facility master plan and report review											\$ -	\$ 3,050
	Special		iv. Final facility master plan and report											\$ -	\$ 6,464
	Special		v. Final presentation											\$ -	\$ 5,515
														\$ -	\$ -
<b>Total Hours / Quantity</b>				\$ 466,930	\$ 13,600	\$ (28,102)	\$ -	\$ -	\$ -	\$ -	\$ -	\$ -	\$ -		
<b>Total Effort</b>				\$ 536,970	\$ 15,640	\$ (28,102)	\$ -	\$ -	\$ -	\$ -	\$ -	\$ -	\$ -	\$ 524,508	\$ 1,528,933

Pflugerville Central WWTP Expansion  
Phase II Design Schedule (PFL16607)

ID	Task Name	Duration	Start	Finish	Qtr 1, 2021			Qtr 2, 2021			Qtr 3, 2021			Qtr 4, 2021			Qtr 1, 2022			Qtr 2, 2022			Qtr 3, 2022	
					Jan	Feb	Mar	Apr	May	Jun	Jul	Aug	Sep	Oct	Nov	Dec	Jan	Feb	Mar	Apr	May	Jun	Jul	Aug
1	<b>Central WWTP Expansion Phase II</b>	<b>715 days</b>	<b>Mon 5/10/21</b>	<b>Fri 2/2/24</b>																				
2	Notice to Proceed	0 days	Mon 5/10/21	Mon 5/10/21																				
3	<b>Design Phase</b>	<b>295 days</b>	<b>Mon 5/10/21</b>	<b>Fri 6/24/22</b>																				
4	<b>30% Design</b>	<b>80 days</b>	<b>Mon 5/10/21</b>	<b>Fri 8/27/21</b>																				
5	Prepare 30% Design Deliverables	8 wks	Mon 5/10/21	Fri 7/2/21																				
6	Design Validation TM	3 wks	Mon 5/10/21	Fri 5/28/21																				
7	Internal QC (IQC Review)	2 wks	Mon 7/5/21	Fri 7/16/21																				
8	Address IQC Comments	3 wks	Mon 7/19/21	Fri 8/6/21																				
9	<b>Deliverable: 30% Design to CoP</b>	<b>0 days</b>	<b>Fri 8/6/21</b>	<b>Fri 8/6/21</b>																				
10	City 30% Review	3 wks	Mon 8/9/21	Fri 8/27/21																				
11	<b>60% Design</b>	<b>110 days</b>	<b>Mon 9/6/21</b>	<b>Fri 2/4/22</b>																				
12	Prepare 60% Design Deliverables	14 wks	Mon 9/6/21	Fri 12/10/21																				
13	IQC Review	2 wks	Mon 12/13/21	Fri 12/24/21																				
14	Address IQC Comments	3 wks	Mon 12/27/21	Fri 1/14/22																				
15	<b>Deliverable: 60% Design to CoP</b>	<b>0 days</b>	<b>Fri 1/14/22</b>	<b>Fri 1/14/22</b>																				
16	City 60% Review	3 wks	Mon 1/17/22	Fri 2/4/22																				
17	<b>90% Design</b>	<b>135 days</b>	<b>Sat 11/20/21</b>	<b>Fri 5/27/22</b>																				
18	<i>Phase I Substantial Completion</i>	<i>0 days</i>	<i>Sat 11/20/21</i>	<i>Sat 11/20/21</i>																				
19	Structural Condition Assessments	4 wks	Mon 12/20/21	Fri 1/14/22																				
20	Prepare 90% Design Deliverables	8 wks	Mon 2/7/22	Fri 4/1/22																				
21	Construction Sequencing Workshop	0 days	Mon 3/7/22	Mon 3/7/22																				
22	IQC Review	2 wks	Mon 4/4/22	Fri 4/15/22																				
23	Address IQC Comments	3 wks	Mon 4/18/22	Fri 5/6/22																				
24	<b>Deliverable: 90% Design to CoP</b>	<b>0 days</b>	<b>Fri 5/6/22</b>	<b>Fri 5/6/22</b>																				
25	City 90% Review	3 wks	Mon 5/9/22	Fri 5/27/22																				
26	<b>Issued for Bid</b>	<b>20 days</b>	<b>Mon 5/30/22</b>	<b>Fri 6/24/22</b>																				
27	Prepare Issued for Bid Documents and Finalize CSP Criteria	4 wks	Mon 5/30/22	Fri 6/24/22																				
28	<b>Deliverable: IFB Documents to City/Summary Transmittal to TCEQ</b>	<b>0 days</b>	<b>Fri 6/24/22</b>	<b>Fri 6/24/22</b>																				
29																								
30																								



Pflugerville Central WWTP Expansion  
Phase II Design Schedule (PFL16607)

ID	Task Name	Duration	Start	Finish	Qtr 1, 2021			Qtr 2, 2021			Qtr 3, 2021			Qtr 4, 2021			Qtr 1, 2022			Qtr 2, 2022			Qtr 3, 2022		
					Jan	Feb	Mar	Apr	May	Jun	Jul	Aug	Sep	Oct	Nov	Dec	Jan	Feb	Mar	Apr	May	Jun	Jul	Aug	Sep
31	<b>Special Services</b>	<b>105 days</b>	<b>Mon 5/10/21</b>	<b>Fri 10/1/21</b>																					
32	<b>Secondary Feed and Backup Power TM</b>	<b>60 days</b>	<b>Mon 5/10/21</b>	<b>Fri 7/30/21</b>																					
33	Prepare Draft TM	8 wks	Mon 5/10/21	Fri 7/2/21																					
34	Internal QC	2 wks	Mon 7/5/21	Fri 7/16/21																					
35	Address Comments	2 wks	Mon 7/19/21	Fri 7/30/21																					
36	Deliverable: Submit Draft TM to CofP	0 days	Fri 7/30/21	Fri 7/30/21																					
37	City Review	3 wks	Mon 8/2/21	Fri 8/20/21																					
38	Electrical Reliability Workshop	1 day	Mon 8/16/21	Mon 8/16/21																					
39	Finalize TM	2 wks	Mon 8/23/21	Fri 9/3/21																					
40	<b>Composting Area TM</b>	<b>85 days</b>	<b>Mon 5/10/21</b>	<b>Fri 9/3/21</b>																					
41	Prepare Draft TM	8 wks	Mon 5/10/21	Fri 7/2/21																					
42	Internal QC	2 wks	Mon 7/5/21	Fri 7/16/21																					
43	Address Comments	2 wks	Mon 7/19/21	Fri 7/30/21																					
44	Deliverable: Submit Draft TM to CofP	0 days	Fri 7/30/21	Fri 7/30/21																					
45	City Review	3 wks	Mon 8/2/21	Fri 8/20/21																					
46	Electrical Reliability Workshop	1 day	Mon 8/16/21	Mon 8/16/21																					
47	Finalize TM	2 wks	Mon 8/23/21	Fri 9/3/21																					
48	<b>Survey</b>	<b>20 days</b>	<b>Mon 5/10/21</b>	<b>Fri 6/4/21</b>																					
49	Effluent Pump Station Topo	4 wks	Mon 5/10/21	Fri 6/4/21																					
50	<b>DPW Facilities Master Plan</b>	<b>105 days</b>	<b>Mon 5/10/21</b>	<b>Fri 10/1/21</b>																					
51	Phase I: Discovery	3 wks	Mon 5/10/21	Fri 5/28/21																					
52	Phase II: Programming	3 wks	Mon 5/31/21	Fri 6/18/21																					
53	Phase III: Concept Master Plan	6 wks	Mon 6/21/21	Fri 7/30/21																					
54	City Review of Concept Master Plan	3 wks	Mon 8/2/21	Fri 8/20/21																					
55	Phase IV: Final Master Plan and Report	6 wks	Mon 8/23/21	Fri 10/1/21																					
56	Bid Phase (Future Contract)	3 mons	Mon 6/27/22	Fri 9/16/22																					
57	Construction Phase (Future Contract)	18 mons	Mon 9/19/22	Fri 2/2/24																					
58																									
59																									