

Boundary Description
2018 Tax Increment Reinvestment Zone No. 1 Annexation
City of Pflugerville Municipal Limits, Travis County

The 2018 Pflugerville TIRZ No. 1 Annexation is situated southwest of the intersection of W Pecan St (FM 1825) and S Heatherwilde Blvd within the municipal limits of Pflugerville, and J. Van Winkle Survey of Travis County. The Annexation is a +/- 67.4 acre tract and described as follows:

Beginning at southeast corner of intersection of south right-of-way (ROW) of W Pecan St and east ROW of Old Austin Pflugerville Rd and northwest corner of 1.056 acre tract (LOT 3&4 BLK A WELLS POINT COMMERCIAL FILING I) located at 1705 W Pecan St;

Then southwest by south along west boundary of said 1.056 acre tract to southwest corner of said tract and northwest corner of 7.2775 acre lot (LOT 5 BLK A WELLS POINT COMMERCIAL FILING I);

Then generally east along north boundary of said 7.2775 acre lot, to northeast corner of said lot and west ROW of S Heatherwilde Blvd;

Then generally south along east boundary of said 7.2775 acre lot and west ROW of S Heatherwilde Blvd to southeast corner of said 7.2775 acre lot;

Then west northwest along south boundary of said 7.2775 acre lot to southwest corner of said 7.2775 acre lot and east ROW of Old Austin Pflugerville Rd;

Then south southwest along east ROW of Old Austin Pflugerville Rd to intersection with west ROW of S Heatherwilde Blvd;

Then generally south along west ROW of S Heatherwilde Blvd to south ROW of Old Austin Pflugerville Rd;

Then west northwest along south ROW of Old Austin Pflugerville Rd to a point south by east of southeast corner of 1.7160 acre lot (LOT 1 DSP ADDN) located at 2021 W Pecan St;

Then north by west across ROW of Old Austin Pflugerville Rd and along east boundary of said 1.7160 acre lot to northeast corner of said 1.7160 acre lot and south ROW of W Pecan St;

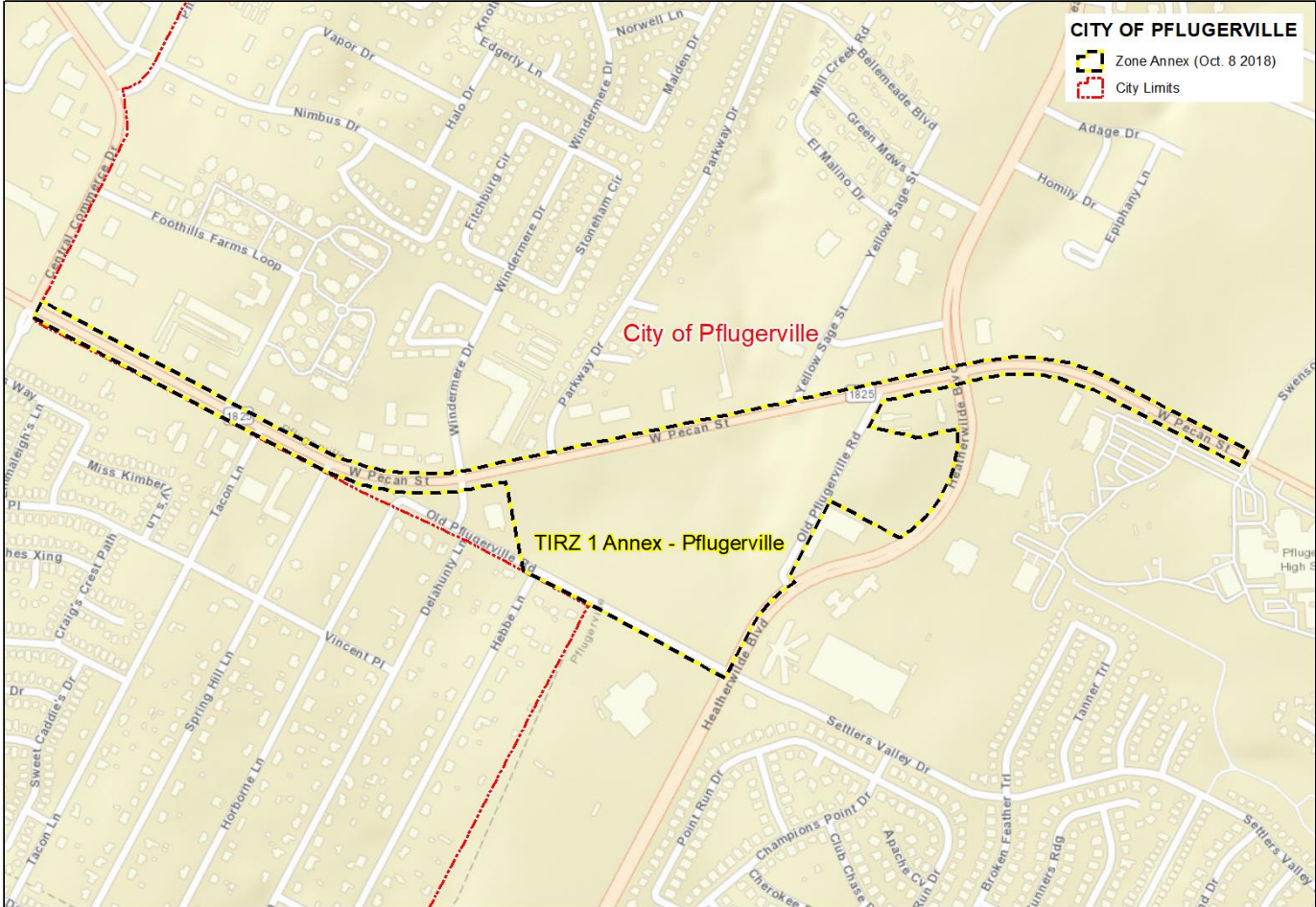
Then generally west and northwest by west along south ROW of W Pecan St to City of Pflugerville Mun. Limits at east ROW of Central Commerce Dr;

Then north northeast along City of Pflugerville Mun. Limits to north ROW of W Pecan St;

Then generally east and southeast by east along north ROW of W Pecan St to west ROW of Swenson Farms Blvd;

Then south southwest along west ROW of Swenson Farms Blvd to south ROW of W Pecan St;

Then generally west and northwest by west along south ROW of W Pecan St to northwest corner of 1.056 acre lot (LOT 3&4 BLK A WELLS POINT COMMERCIAL FILING I), and east ROW of Old Austin Pflugerville Rd and beginning of +/- 67.4 acre tract.



Boundary Description
 TIRZ No. 1 Annex, City of Pflugerville, Travis County
 Oct. 8, 2018