

RESOLUTION NO. _____

**RESOLUTION OF THE CITY OF PFLUGERVILLE, TEXAS
APPROVING THE REQUEST FOR ATHLETIC FIELD LIGHTING AT
THE PFLUGERVILLE ISD DISTRICT STADIUM LOCATED AT THE
NORTHWEST CORNER OF PECAN STREET AND SWENSON FARMS
BOULEVARD.**

WHEREAS, the City Council finds Subchapter 13.9 of the Unified Development Code (UDC) of the City of Pflugerville states that athletic field lighting requires approval by the City Council pursuant to Ordinance No. 1203-15-02-24; and,

WHEREAS, the City Council finds that the Pflugerville Independent School District made application for a Site Development Permit in accordance with Subchapter 3 Procedures of Chapter 157 Unified Development Code of the City of Pflugerville for its Stadium to include athletic field lighting at Pecan Street and Swenson Farms Boulevard; and,

WHEREAS, the City Council finds that athletic field lighting on the subject property as depicted in Exhibit A will be limited to four (4) poles installed as shown on the proposed site plan, equipment layout and illumination summary included with the application and attached as Exhibit B, and the proposed lighting shall be as provided in the application and subject to the regulations defined in the Unified Development Code; and,

WHEREAS, the City Council finds that the application demonstrates good cause for approval to the extent and further limited to the athletic field lighting applied for and proposed in the application.

NOW THEREFORE, BE IT RESOLVED BY THE CITY COUNCIL OF THE CITY OF PFLUGERVILLE, TEXAS:

The request for athletic field lighting for the Pflugerville Independent School District Stadium located at Pecan Street and Swenson Farms Boulevard is hereby approved.

PASSED AND APPROVED this 8th day of September, 2015.

CITY OF PFLUGERVILLE, TEXAS

by: _____
JEFF COLEMAN, Mayor

ATTEST:

KAREN THOMPSON, City Secretary

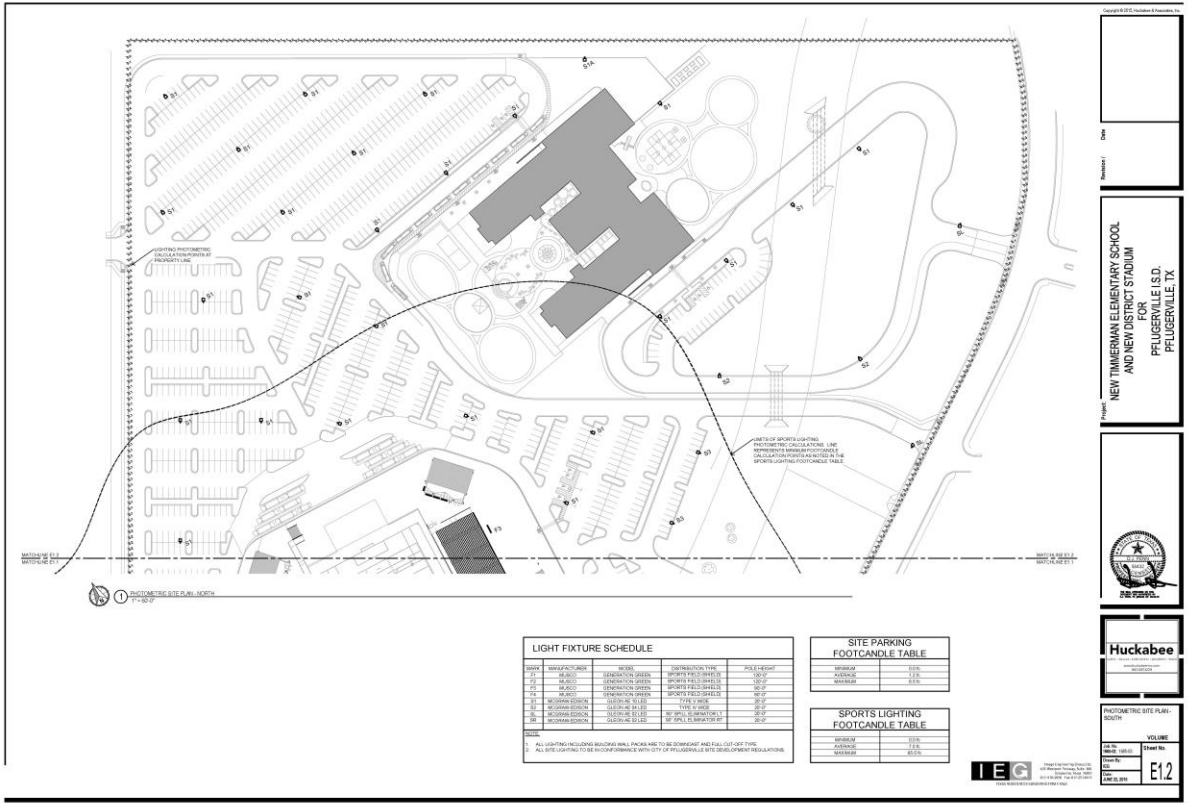
APPROVED AS TO FORM:

George Hyde, City Attorney
Denton Navarro Rocha Bernal Hyde & Zech, P.C.

EXHIBIT A

60.181 ACRES OF LAND SITUATED IN THE JOHN VAN WINKLE SURVEY NO. 14, THE H.W. FARLEY SERVY NO. 4 AND THE GARCIA MONTEX AND DURAN SURVEY NO. 94, CITY OF PFLUGERVILLE INDEPENDENT SCHOOL DISTRICT IN DOCUMENTNUMBER 2009135973 OF THE OFFICIAL PUBLIC RECORDS OF TRAVIS COUNTY, TEXAS, SAID 60.181 ACRES CONVEYED TWO (2) SEPARATE TRACTS OF LAND IN SAID DOCUMENT NUMBER 2009135973.

EXHIBIT B

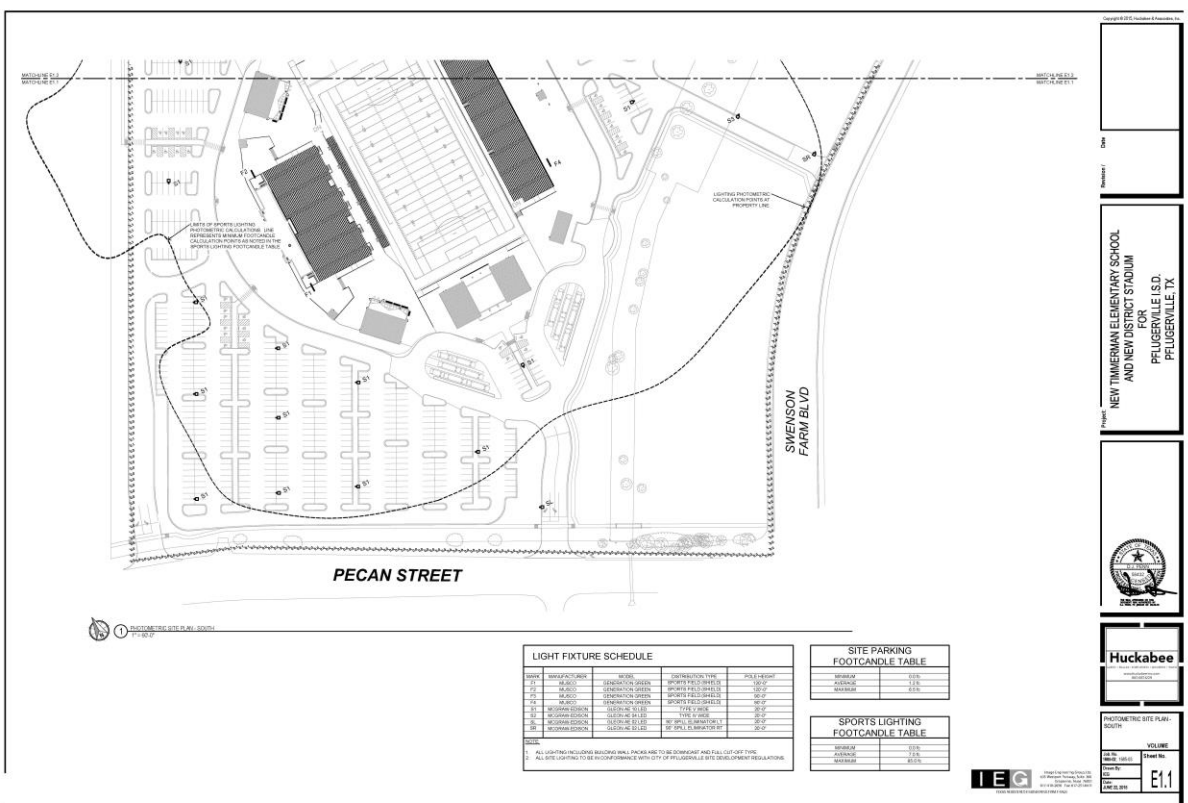


LIGHT FIXTURE SCHEDULE			
NO.	DESCRIPTION	MODEL	FOOTCANDLE
1	STREET LIGHTING	GENERIC	100
2	STREET LIGHTING	GENERIC	100
3	STREET LIGHTING	GENERIC	100
4	STREET LIGHTING	GENERIC	100
5	STREET LIGHTING	GENERIC	100
6	STREET LIGHTING	GENERIC	100
7	STREET LIGHTING	GENERIC	100
8	STREET LIGHTING	GENERIC	100
9	STREET LIGHTING	GENERIC	100
10	STREET LIGHTING	GENERIC	100

SITE PARKING FOOTCANDLE TABLE	
FOOTCANDLE	FEET
10	100
20	50
30	33
40	25
50	20
60	16.7
70	14.3
80	12.5
90	11.1
100	10

SPORTS LIGHTING FOOTCANDLE TABLE	
FOOTCANDLE	FEET
10	100
20	50
30	33
40	25
50	20
60	16.7
70	14.3
80	12.5
90	11.1
100	10

ALL LIGHTING INCLUDING BACKING SHALL PACKAGES TO BE DOWNCAST AND FULL CUTOFF TYPE.
ALL SITE LIGHTING TO BE IN ACCORDANCE WITH CITY OF PFLUGERVILLE SITE DEVELOPMENT REGULATIONS.



LIGHT FIXTURE SCHEDULE			
NO.	DESCRIPTION	MODEL	FOOTCANDLE
1	STREET LIGHTING	GENERIC	100
2	STREET LIGHTING	GENERIC	100
3	STREET LIGHTING	GENERIC	100
4	STREET LIGHTING	GENERIC	100
5	STREET LIGHTING	GENERIC	100
6	STREET LIGHTING	GENERIC	100
7	STREET LIGHTING	GENERIC	100
8	STREET LIGHTING	GENERIC	100
9	STREET LIGHTING	GENERIC	100
10	STREET LIGHTING	GENERIC	100

SITE PARKING FOOTCANDLE TABLE	
FOOTCANDLE	FEET
10	100
20	50
30	33
40	25
50	20
60	16.7
70	14.3
80	12.5
90	11.1
100	10

SPORTS LIGHTING FOOTCANDLE TABLE	
FOOTCANDLE	FEET
10	100
20	50
30	33
40	25
50	20
60	16.7
70	14.3
80	12.5
90	11.1
100	10

ALL LIGHTING INCLUDING BACKING SHALL PACKAGES TO BE DOWNCAST AND FULL CUTOFF TYPE.
ALL SITE LIGHTING TO BE IN ACCORDANCE WITH CITY OF PFLUGERVILLE SITE DEVELOPMENT REGULATIONS.



MY PROJECT
 Name: Pflugerville ISD Regional Stadium
 Location: Pflugerville, TX

EQUIPMENT LAYOUT

INCLUDES:
 - Football
 - Soccer

Electrical System Requirements: Refer to Amperage Draw Chart and/or the "Musco Control System Summary" for electrical sizing.

Installation Requirements: Results assume +/- 3% nominal voltage at line side of the ballast and structures located within 3 feet (1m) of design locations.

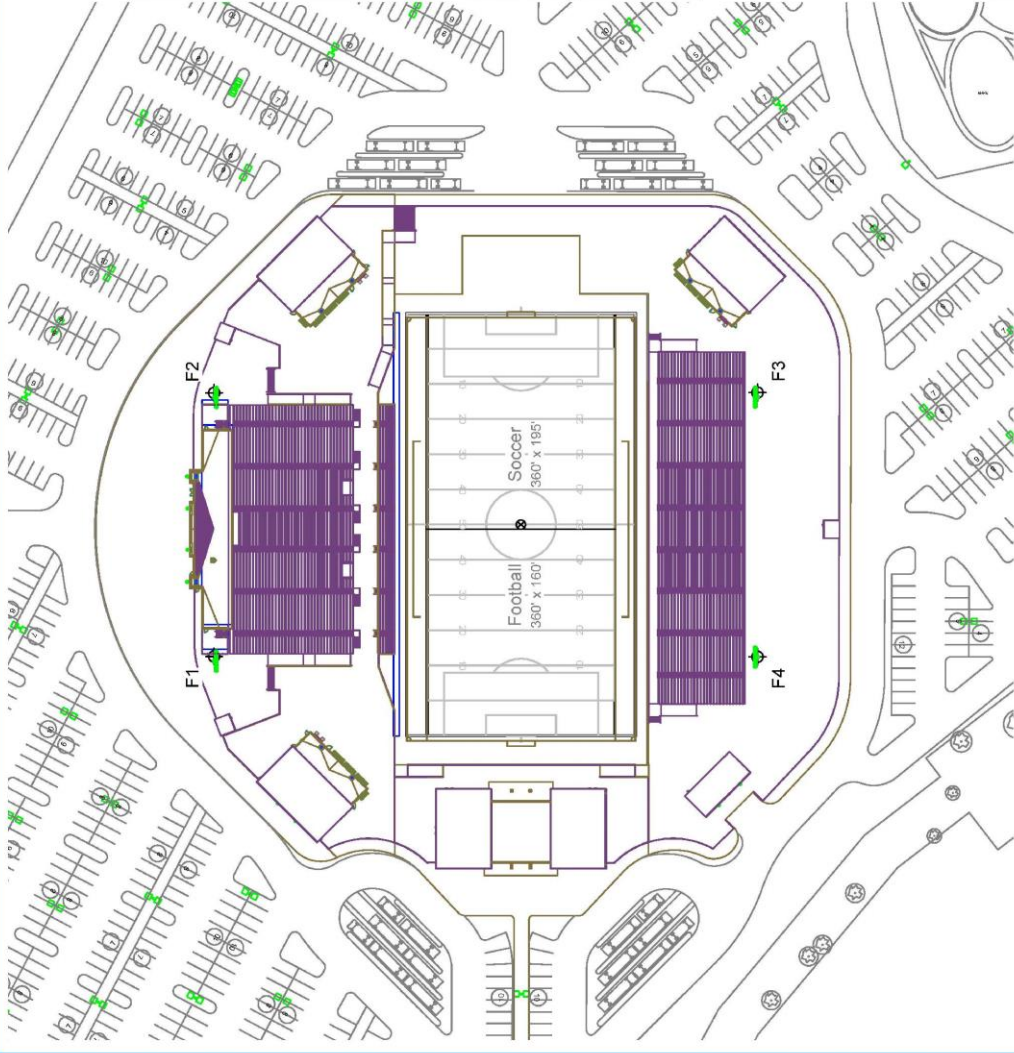
EQUIPMENT LIST FOR AREAS SHOWN

QTY	LOCATION	SIZE	GRADE ELEVATION	MOUNTING HEIGHT	LAMP TYPE	QTY/POLE	
							POLE
2	F1-F2	120'	12'	102'	LED 5700K - 05 CRI	4	
2	F3-F4	90'	-	60'	LED 5700K - 05 CRI	2	
4	TOTALS						104

SINGLE LUMINAIRE AMPERAGE DRAW CHART

Ballast Specifications
 (Use Amps per luminaire)

Line Amperage Per Luminaire	208	240	277	347	380	480
Single Phase Voltage	86.6	105	120	150	166	208
1500 watt MZ	8.6	10.5	12.0	15.0	16.6	20.8
Other	-	-	-	-	-	-



Pole location(s) + dimensions are relative to 0,0 reference point(s)



ENGINEERED DESIGN
 By: Cory Kitzman
 File # / Date: 172610A 12-May-15

Not to be reproduced in whole or part without the written consent of Musco Sports Lighting, LLC. ©1981, 2015 Musco Sports Lighting, LLC.

EQUIPMENT LAYOUT



MY PROJECT
 Name: Pflugerville ISD Regional Stadium
 Location: Pflugerville, TX

GRID SUMMARY
 Name: Soccer
 Size: 360' x 195'
 Spacing: 30.0' x 30.0'
 Height: 3.0' above grade

CONSTANT ILLUMINATION

SUMMARY

Entire Grid	70
Guaranteed Average:	71.3
Scan Average:	86
Maximum:	89
Minimum:	59
Avg / Min:	1.21
Guaranteed Max / Min:	2
Max / Min:	1.45
UG (adjacent pts):	1.22
No. of Points:	84

LUMINAIRE INFORMATION

Luminaire Type: Green Generation / LED-96
 Design Usage Hours: 5,000 / 10,000 hrs
 Design Lumens: 134,000 / 38,600
 Avg Lamp Tilt Factor: 1.000
 No. of Luminaires: 104
 Avg KW: 148.62 (161.13 max)

Guaranteed Performance: The Guaranteed Average CONSTANT ILLUMINATION described above is guaranteed for the design usage hours of the system.

Field Measurements: Illumination measured in accordance with IESNA LM-5-04 and CIBSE LG4. Individual values may vary. See the Warranty document for details.

Electrical System Requirements: Refer to Amperage Draw Chart and/or the "Musco Control System Summary" for electrical sizing.

Installation Requirements: Results assume 1/3% nominal voltage at line side of the ballast and structures located within 3 feet (1m) of design locations.

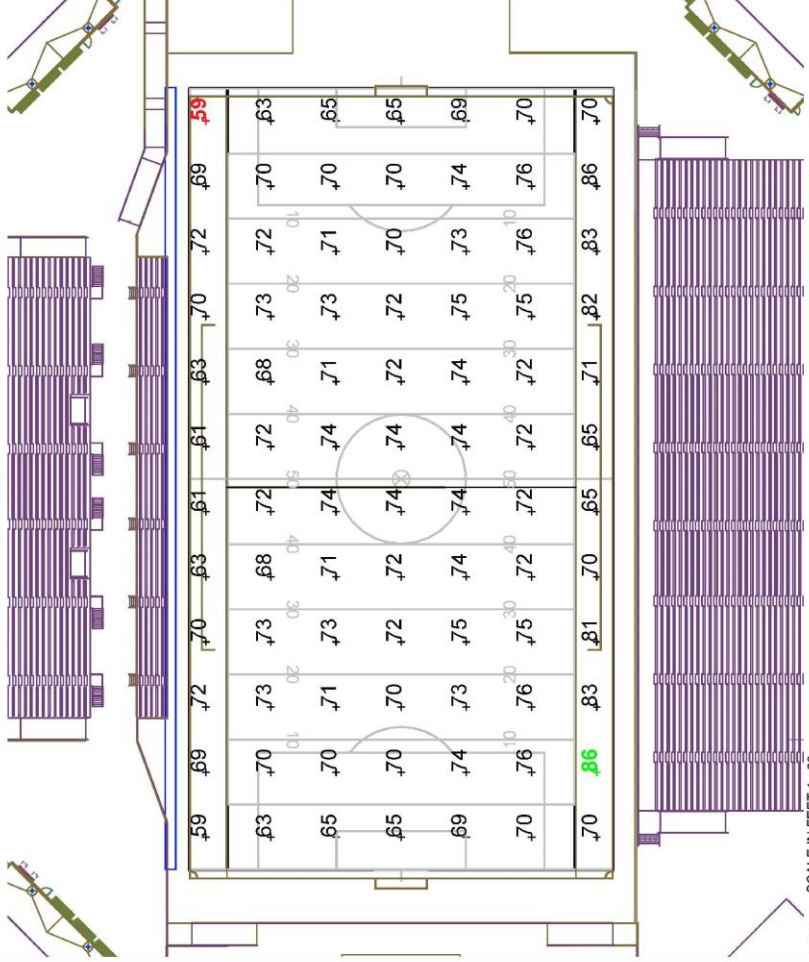
ENGINEERED DESIGN
 By: Cory Kitzman
 File #: 172610A
 12-May-15

Not to be reproduced in whole or part without the written consent of Musco Sports Lighting, LLC. © 1981-2015 Musco Sports Lighting, LLC.

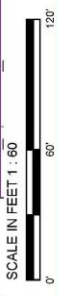
ILLUMINATION SUMMARY

EQUIPMENT LIST FOR AREAS SHOWN

Pole		Luminaires						
QTY	LOCATION	SIZE	GRAND ELEVATION	WORKING HEIGHT	TYPE	QTY	THIS GRID	OTHER GRIDS
2	F1-F2	120'	12'	102'	LED 5700K - 65 CRI	4	4	0
2	F3-F4	90'	-	132'	1500W MZ	25	25	0
				60'	LED 5700K - 65 CRI	2	2	0
				50'	1500W MZ	21	21	0
4	TOTALS					104	104	0



Pole location(s) + dimensions are relative to 0,0 reference point(s)





MY PROJECT
 Name: Pflugerville ISD Regional Stadium
 Location: Pflugerville, TX

GRID SUMMARY
 Name: Football
 Size: 360' x 160'
 Spacing: 30.0' x 30.0'
 Height: 3.0' above grade

CONSTANT ILLUMINATION

SUMMARY

Entire Grid	70
Guaranteed Average:	71.7
Scan Average:	81
Maximum:	81
Minimum:	61
Avg / Min:	1.17
Guaranteed Max / Min:	2
Max / Min:	1.32
UG (adjacent pts):	1.14
No. of Points:	72

LUMINAIRE INFORMATION

Luminaire Type: Green Generation / LED-96
 Design Usage Hours: 5,000 / 10,000 hrs
 Design Lumens: 134,000 / 38,600
 Avg Lamp TIK Factor: 1.000
 No. of Luminaires: 104
 Avg KW: 148.62 (161.13 max)

Guaranteed Performance: The Guaranteed Average CONSTANT ILLUMINATION described above is guaranteed for the design usage hours of the system.

Field Measurements: Illumination measured in accordance with IESNA LM-5-04 and CIBSE LG4. Individual values may vary. See the Warranty document for details.

Electrical System Requirements: Refer to Amperage Draw Chart and/or the "Musco Control System Summary" for electrical sizing.

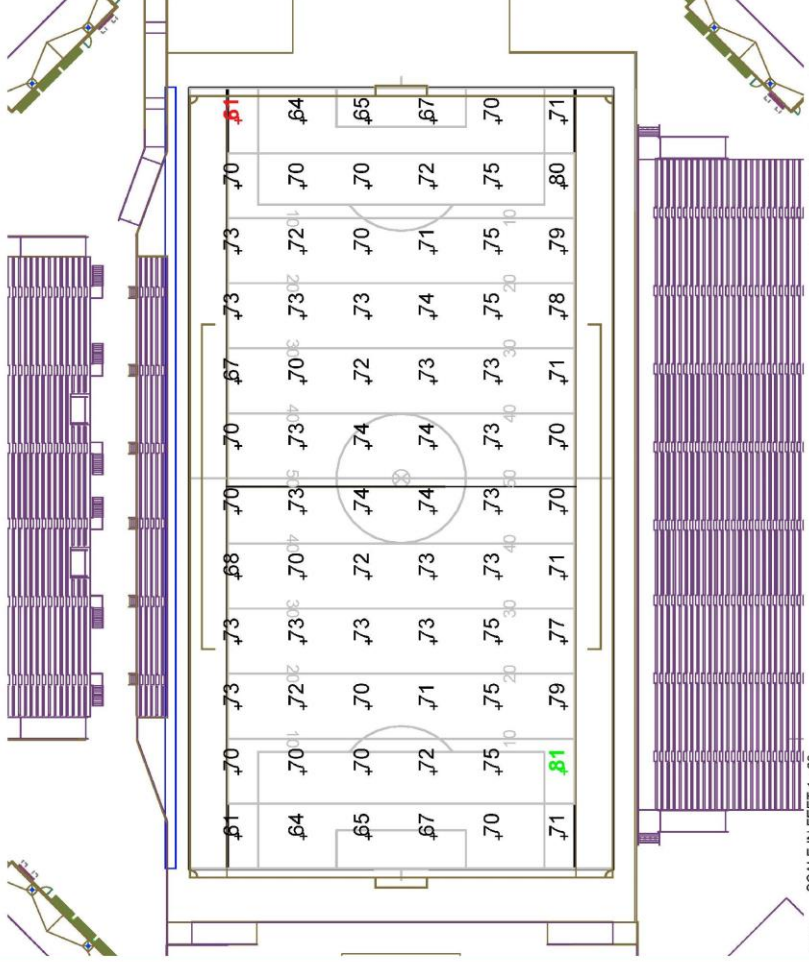
Installation Requirements: Results assume +/- 3% nominal voltage at line side of the ballast and structures located within 3 feet (1m) of design locations.

ENGINEERED DESIGN
 By: Cory Kitzman
 File #: 172610A
 Date: 12-May-15

Not to be reproduced, in whole or part without the written consent of Musco Sports Lighting, LLC. © 1981-2015 Musco Sports Lighting, LLC.

EQUIPMENT LIST FOR AREAS SHOWN

QTY	LOCATION	SIZE	GRADE ELEVATION	MOUNTING HEIGHT	Luminaires		
					TYPE	QTY / POLE	THIS GRID / OTHER GRIDS
2	F1-F2	120'	12'	102'	LED 5700K - 65 CRI	4	4
2	F3-F4	90'	-	132'	1500W MZ	25	25
				60'	LED 5700K - 65 CRI	2	2
				90'	1500W MZ	21	21
4	TOTALS					104	104



Pole location(s) + dimensions are relative to 0,0 reference point(s)

SCALE IN FEET 1" = 60'

ILLUMINATION SUMMARY



MY PROJECT
 Name: Pflugerville ISD Regional Stadium
 Location: Pflugerville, TX

GRID SUMMARY
 Name: Concourse Area
 Size: 360' x 160'
 Spacing: 20.0' x 20.0'
 Height: 3.0' above grade

CONSTANT ILLUMINATION

SUMMARY		HORIZONTAL FOOTCANDLES	
Scan Average:	20.1	Entire Grid	
Minimum:	69		
Maximum:	1		
Avg / Min:	24.77		
Max / Min:	84.88		
UG (adjacent pb):	2.97		
No. of Points:	223		

LUMINAIRE INFORMATION

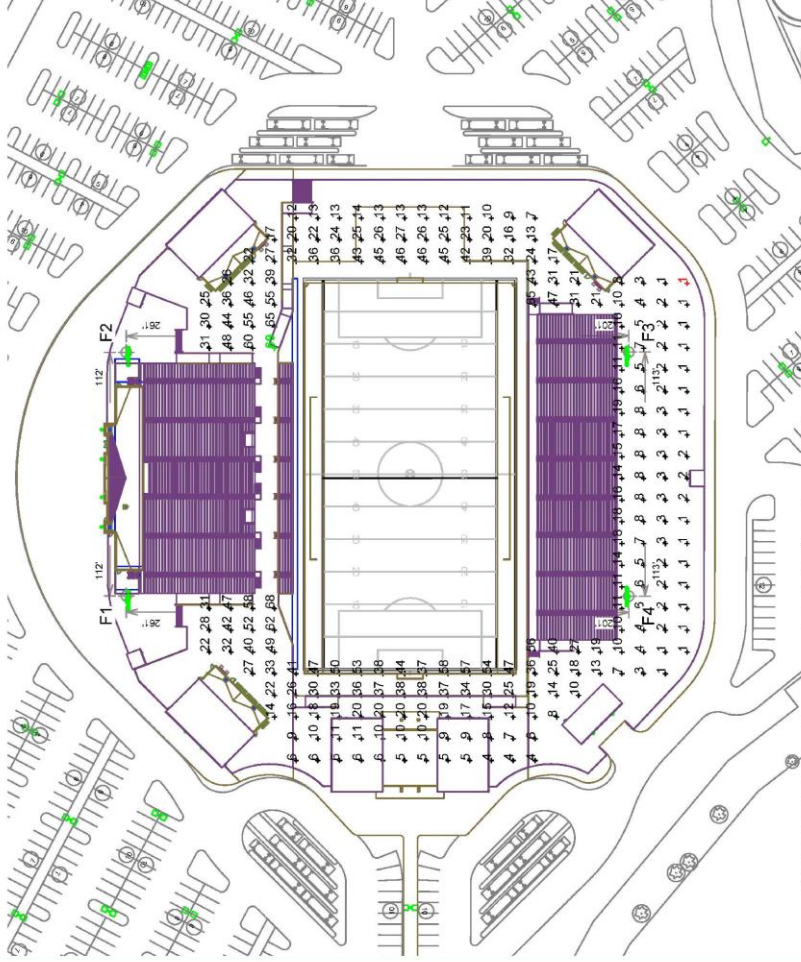
Luminaire Type: Green Generation / LED-96
 Design Usage Hours: 5,000 / 10,000 hrs
 Design Lumens: 134,000 / 38,600
 Avg Lamp TIK Factor: 1.000
 No. of Luminaires: 104
 Avg KW: 148.62 (161.13 max)

Guaranteed Performance: The CONSTANT ILLUMINATION described above is guaranteed for the design usage hours of the system.
Field Measurements: Illumination measured in accordance with IESNA LM-5-04 and CIBSE LG4. Individual values may vary. See the Warranty document for details.
Electrical System Requirements: Refer to Amperage Draw Chart and/or the "Musco Control System Summary" for electrical sizing.
Installation Requirements: Results assume +/- 3% nominal voltage at line side of the ballast and structures located within 3 feet (1m) of design locations.

ENGINEERED DESIGN
 By: Cory Kitzman
 File # / Date: 172610A / 12-May-15
 Not to be reproduced, in whole or in part, without the written consent of Musco Sports Lighting, LLC. © 1991-2015 Musco Sports Lighting, LLC.

EQUIPMENT LIST FOR AREAS SHOWN

QTY	LOCATION	SIZE	GRADE ELEVATION	MOUNTING HEIGHT		Luminaires			
				HEIGHT	TYPE	QTY	THIS GRID	OTHER GRIDS	
2	F1-F2	120"	12'	102"	LED 5700K - 65 CRI	4	4	0	0
2	F3-F4	90"	-	133"	1500W NZ	25	25	0	0
				60"	LED 5700K - 65 CRI	2	2	0	0
				90"	1500W NZ	21	21	0	0
4	TOTALS					104	104	0	0



SCALE IN FEET 1 : 120
 Pole location(s) + dimensions are relative to 0,0 reference point(s)

ILLUMINATION SUMMARY



MY PROJECT
 Name: Pflugerville ISD Regional Stadium
 Location: Pflugerville, TX

GRID SUMMARY
 Name: Area Grid
 Size: 360' x 160'
 Spacing: 30.0' x 30.0'
 Height: 3.0' above grade

CONSTANT ILLUMINATION SUMMARY

HORIZONTAL FOOTCANDLES	
Scan Average:	7.0
Minimum:	85
Avg / Min:	0
Max / Min:	-
UG (adjacent pts):	256.48
No. of Points:	1640
LUMINAIRE INFORMATION	
Luminaire Type:	Green Generation / LED-96
Design Usage Hours:	5,000 / 10,000 Hrs
Design Lumens:	134,000 / 38,600
Avg Lamp Tilt Factor:	1.000
No. of Luminaires:	104
Avg KW:	148.62 (161.13 max)

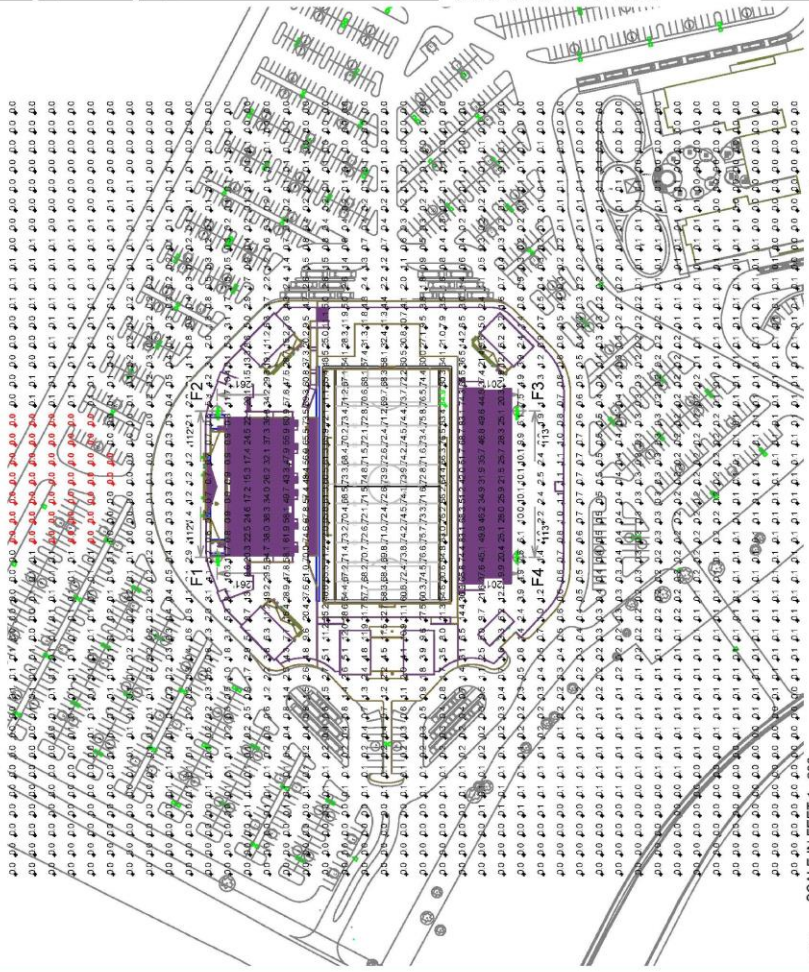
Guaranteed Performance: The CONSTANT ILLUMINATION described above is guaranteed for the design usage hours of the system.
Field Measurements: Illumination measured in accordance with IESNA LM-5-04 and CIBSE LG4. Individual values may vary. See the Warranty document for details.
Electrical System Requirements: Refer to Amperage Draw Chart and/or the "Musco Control System Summary" for electrical string.
Installation Requirements: Results assume +/- 3% nominal voltage at line side of the ballast and structures located within 3 feet (1m) of design locations.

ENGINEERED DESIGN
 By: Cory Kitzman
 File # / Date: 172610A
 12-May-15

Not to be reproduced / In whole or part without the written consent of Musco Sports Lighting, LLC. © 1991-2015 Musco Sports Lighting, LLC.

EQUIPMENT LIST FOR AREAS SHOWN

CITY	LOCATION	POLE	GRASS ELEVATION	MOUNTING HEIGHT	Luminaires			
					QTY	THIS GRID	OTHER GRIDS	
2	F1-F2	120'	12'	102'	LED 5700K - 65 CRI	4	4	0
2	F3-F4	90'	-	133'	1500W WZ	25	25	0
				90'	LED 5700K - 65 CRI	2	2	0
					1500W WZ	21	21	0
4	TOTALS					104	104	0



ILLUMINATION SUMMARY