

RESOLUTION NO. _____

**RESOLUTION OF THE CITY OF PFLUGERVILLE, TEXAS
APPROVING THE REQUEST FOR ATHLETIC FIELD LIGHTING AT
1849 PARK LOCATED AT 16430 CAMERON ROAD.**

WHEREAS, Subchapter 13.9 of the Unified Development Code (UDC) states that athletic field lighting requires approval by the City Council as approved by Ordinance No. 1203-15-02-24; and

WHEREAS, an application was made for a Site Development Permit in accordance with Subchapter 3 Procedures of Chapter 157 Unified Development Code; and

WHEREAS, the athletic field lighting on the subject property described in Exhibit A will be limited to the following:

1. Lighting shall be installed as shown on the proposed site plan, equipment layout and illumination summary included with the application as shown in Exhibit B.
2. The proposed lighting shall be as provided in the application and subject to the regulations defined in the Unified Development Code (UDC).

NOW THEREFORE, BE IT RESOLVED BY THE CITY COUNCIL OF THE CITY OF PFLUGERVILLE, TEXAS:

That the request for athletic field lighting for 1849 Park located at 16430 Cameron Road is hereby approved.

PASSED AND APPROVED this 25th day of July, 2017.

CITY OF PFLUGERVILLE, TEXAS

by: _____
Victor Gonzales, Mayor

ATTEST:

KAREN THOMPSON, City Secretary

APPROVED AS TO FORM:

George Hyde, City Attorney
Denton Navarro Rocha Bernal Hyde & Zech, P.C.

EXHIBIT A

243.70 ACRES OF LAND, MORE OR LESS, OUT OF THE WILLIAM CALDWELL SURVEY NO. 66, ABSTRACT NO. 162 AND THE JOHN LIESSE SURVEY NO. 18, ABSTRACT NO. 406 IN TRAVIS COUNTY, TEXAS, SAID 243.70 ACRE TRACT COMPRISED OF TRACT 1 (211.71 ACRES) AND TRACT 2 (31.99 ACRES).

EXHIBIT B

1849 Park Pflugerville, TX

Lighting System

| Fixture ID | Position | Height | Fixture Qty | Luminaire Type | Level | Group |
|------------|----------|--------|-------------|----------------|------------------|-------|
| F1-F2 | 80' | 25' | 10 | TLC-LED-150 | 11.50 MW | A |
| F3-F4 | 80' | 30' | 10 | TLC-LED-150 | 11.50 MW | A |
| | | 80' | 12 | TLC-LED-150 | 13.80 MW | B |
| | | 25' | 1 | TLC-LED-150 | 1.15 MW | B |
| F5 | 80' | 30' | 10 | TLC-LED-150 | 11.50 MW | C |
| | | 80' | 12 | TLC-LED-150 | 13.80 MW | B |
| | | 25' | 1 | TLC-LED-150 | 1.15 MW | C |
| F6 | 80' | 30' | 10 | TLC-LED-150 | 11.50 MW | C |
| | | 80' | 12 | TLC-LED-150 | 13.80 MW | B |
| | | 25' | 1 | TLC-LED-150 | 1.15 MW | C |
| F7-F8 | 80' | 30' | 10 | TLC-LED-150 | 11.50 MW | C |
| | | 25' | 1 | TLC-LED-150 | 1.15 MW | C |
| S1 | 100' | 100' | 30 | TLC-LED-150 | 34.50 MW | D |
| S2-S5 | 100' | 100' | 20 | TLC-LED-150 | 23.00 MW | D |
| S6, S14 | 100' | 100' | 30 | TLC-LED-150 | 34.50 MW | F |
| S7 | 110' | 110' | 30 | TLC-LED-150 | 34.50 MW | D |
| S8, S11 | 100' | 100' | 20 | TLC-LED-150 | 23.00 MW | F |
| S9, S12 | 100' | 100' | 20 | TLC-LED-150 | 23.00 MW | F |
| S10, S13 | 100' | 100' | 20 | TLC-LED-150 | 23.00 MW | F |
| S15 | 100' | 100' | 30 | TLC-LED-150 | 34.50 MW | E |
| 23 | | | 560 | | 644.00 kW | |

| Group Summary | Description | Avg Load | Max Load | Fixture Qty |
|---------------|-------------|----------|----------|-------------|
| A | Football 1 | 58.8 MW | 58.8 MW | 44 |
| B | Football 2 | 58.8 MW | 58.8 MW | 52 |
| C | Football 3 | 58.8 MW | 58.8 MW | 44 |
| D | Soccer 1-2 | 161.0 MW | 161.0 MW | 140 |
| E | Soccer 3-4 | 161.0 MW | 161.0 MW | 140 |
| F | Soccer 5-6 | 161.0 MW | 161.0 MW | 140 |

| Fixture Type Summary | Source | Wattage | Lumens | LSB | L25 | Quantity |
|----------------------|--------------------|---------|---------|---------|---------|----------|
| TLC-LED-150 | LED 9700K - 75 CRI | 1150W | 121,000 | >51,000 | >51,000 | 950 |

Light Level Summary

Calculation Grid Summary

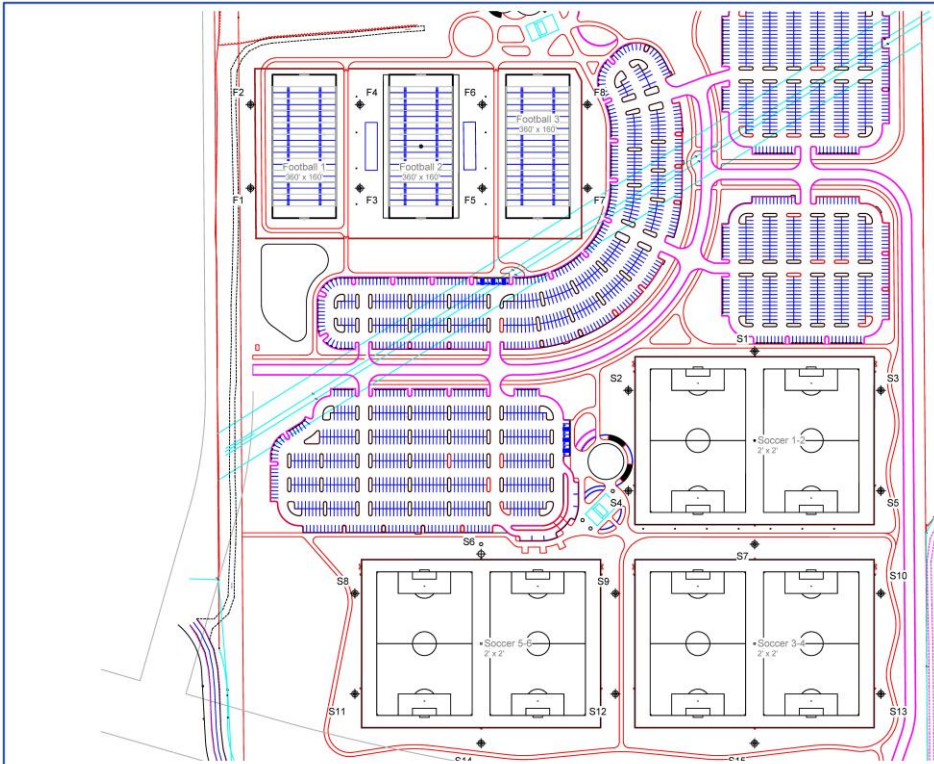
| Grid Name | Calculation Metric | Avg Illumination | Max Illumination | Minimum | Groups | Fixture Qty |
|------------|--------------------|------------------|------------------|---------|--------|-------------|
| Football 1 | Horizontal | 55.9 | 45 | 88 | A | 44 |
| Football 2 | Horizontal | 54 | 43 | 72 | B | 52 |
| Football 3 | Horizontal | 57.5 | 44 | 88 | C | 44 |
| Soccer 1-2 | Horizontal | 51.5 | 40 | 65 | D | 140 |
| Soccer 3-4 | Horizontal | 50.8 | 40 | 65 | E | 140 |
| Soccer 5-6 | Horizontal | 51.3 | 40 | 65 | F | 140 |

From Hometown to Professional



We Make It Happen.

Not to be reproduced in whole or in part without the prior consent of Musco Sports Lighting, LLC. ©1981, 2017 Musco Sports Lighting, LLC.



SCALE IN FEET 1 : 200
 0 200 400

ENGINEERED DESIGN By: Justin Van Soelen • File #181347R1 • 13-Mar-17

Pole location(s) + dimensions are relative to 0.0 reference point(s) ○

1849 Park
 Pflugerville, TX

EQUIPMENT LAYOUT

- INCLUDES:**
- Football 1
 - Football 2
 - Football 3
 - Soccer 1-2
 - Soccer 3-4
 - Soccer 5-6

Electrical System Requirements: Refer to Ampereage Draw Chart and/or the "Musco Control System Summary" for electrical sizing.

Installation Requirements: Results assume a 3% nominal voltage at line side of the driver and structures located within 3 feet (1m) of design locations.

EQUIPMENT LIST FOR AREAS SHOWN

| QTY | LOCATION | HGT | ELEVATION | Pole | | Luminaires | |
|-----|----------|------|-----------|--------|--------------|------------|--------|
| | | | | HEIGHT | TYPE | TYPE | AMOUNT |
| 4 | F1-F2 | 80' | - | 85' | TLC-LED-1150 | 150 | 150 |
| 4 | F3-F6 | 80' | - | 25' | TLC-LED-1150 | 171" | 1 |
| 4 | F7-F8 | 100' | - | 80' | TLC-LED-1150 | 303" | 1 |
| 1 | S14-S15 | - | - | 100' | TLC-LED-1150 | 30 | 30 |
| 2 | S1 | 110' | - | 110' | TLC-LED-1150 | 307" | 307" |
| 2 | S6, S12 | 100' | - | 100' | TLC-LED-1150 | 307" | 307" |
| 8 | S2-S13 | 100' | - | 100' | TLC-LED-1150 | 30 | 30 |
| | S13 | - | - | - | - | - | - |
| 23 | | | | TOTALS | | 500 | 500 |

This structure utilizes a back-to-back mounting configuration

SINGLE EQUIPMENT AMPERAGE DRAW CHART

| Ballast Specifications | Line Ampereage Per Luminaire | | | | | |
|------------------------|------------------------------|-----|-----|-----|-----|-----|
| | [0.9 x watt factor] | | | | | |
| Single Phase Voltage | 208 | 220 | 240 | 277 | 347 | 380 |
| | 340 | 360 | 390 | 460 | 540 | 600 |
| TLC-LED-1150 | 7.2 | 6.8 | 6.5 | 5.2 | 4.2 | 3.5 |

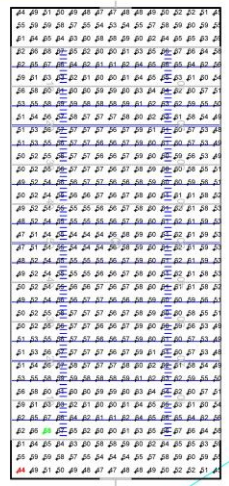
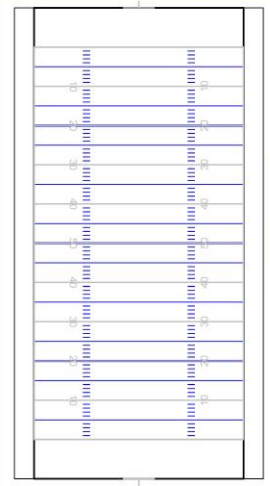
Not to be reproduced in whole or part without the written consent of Musco Sports Lighting, LLC. ©1985 - 2017 Musco Sports Lighting, LLC.



EQUIPMENT LAYOUT

| EQUIPMENT LIST FOR AREAS SHOWN | | | | | | | | | | |
|--------------------------------|----------|------|-------|----------|--------|--------------|--------|-----|------|--------|
| QTY | LOCATION | SIZE | GRADE | REVISION | HEIGHT | LUMINAIRE | | FOY | FEET | SPREAD |
| | | | | | | TIC-LED-1150 | FOY | | | |
| 1 | F5 | 80" | - | - | 25' | TIC-LED-1150 | 10/12" | 30 | 12 | 12 |
| 1 | F6 | 80" | - | - | 25' | TIC-LED-1150 | 10/12" | 30 | 12 | 12 |
| 4 | F7-F8 | 80" | - | - | 25' | TIC-LED-1150 | 10/12" | 30 | 12 | 12 |
| 2 | | | | | | TIC-LED-1150 | | 30 | 12 | 0 |
| TOTAL | | | | | | | | 120 | 48 | 24 |

* This structure utilizes a back-to-back mounting configuration



SCALE IN FEET 1:60
 ENGINEERED DESIGN By: Justin Van Soelen • File #181347R1 • 13-Mar-17

1849 Park Plugarville, TX

| GRID SUMMARY | |
|--------------|------------------|
| Name: | Football 3 |
| Size: | 80' x 160' |
| Spacing: | 10.0' x 10.0' |
| Height: | 3.0' above grade |

| ILLUMINATION SUMMARY | |
|--------------------------------------|-------|
| WARRANTY INFORMATION: IESNA E-185-15 | |
| Entire Grid | |
| Guaranteed Average: | 50 |
| Scan Average: | 51.54 |
| Maximum: | 68 |
| Minimum: | 44 |
| Avg / Min: | 1.30 |
| Guaranteed Max / Min: | 2 |
| Max / Min: | 1.53 |
| UG (adjacent pts): | 1.24 |
| CU: | 0.63 |
| No. of Points: | 976 |

| LUMINAIRE INFORMATION | |
|-----------------------|----------------|
| Color / CRI: | 5700K - 75 CRI |
| Luminaire Output: | 121,000 lumens |
| No. of Luminaires: | 48 |
| Total Load: | 55.6 kW |

| Luminaire Type | 150 hrs | 180 hrs | 170 hrs |
|----------------|---------|---------|---------|
| TIC-LED-1150 | +51,000 | +51,000 | +51,000 |

Reported per TM-21.1. See luminaire data sheet for details.

Guaranteed Performance: The ILLUMINATION described above is guaranteed per your Musco Warranty document and includes a 0.95 dirt depreciation factor.

Field Measurements: Individual field measurements may vary from computer-calculated predictions and should be taken in accordance with IESNA SP-55.

Electrical System Requirements: Refer to Amperage Draw Chart and/or the "Musco Control System Summary" for electrical sizing.

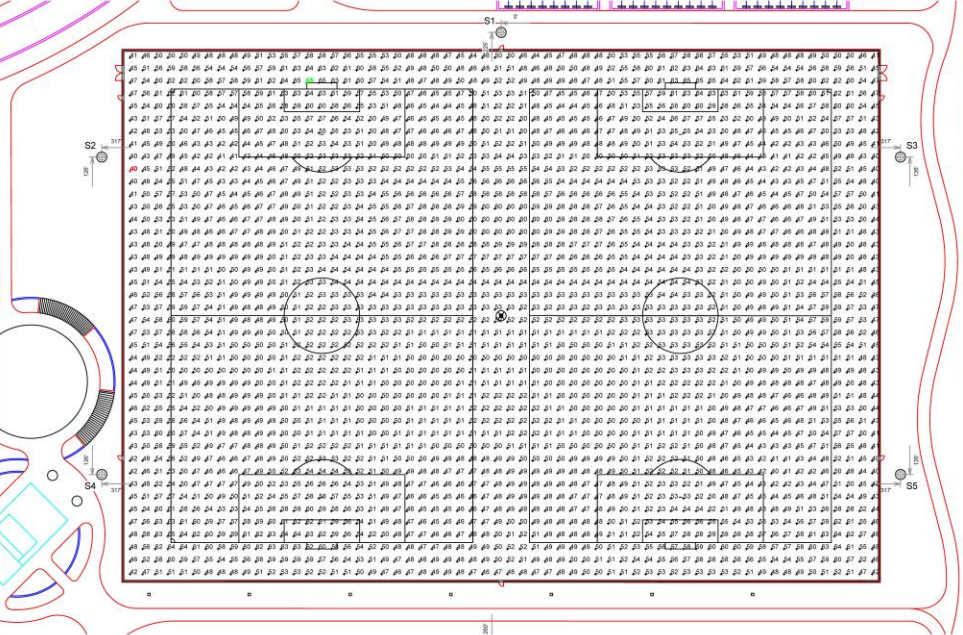
Installation Requirements: Results assume a 3% nominal voltage at line side of the driver and structures located within 3 feet (1m) of design locations.

Not to be reproduced in whole or part without the written consent of Musco Sports Lighting, LLC. ©1985-2017 Musco Sports Lighting, LLC.

ILLUMINATION SUMMARY

| EQUIPMENT LIST FOR AREAS SHOWN | | | | | | | | | | |
|--------------------------------|----------|------|-------|----------|--------|--------------|--------|-----|------|--------|
| QTY | LOCATION | SIZE | GRADE | REVISION | HEIGHT | LUMINAIRE | | FOY | FEET | SPREAD |
| | | | | | | TIC-LED-1150 | FOY | | | |
| 1 | S1 | 100" | - | - | 100' | TIC-LED-1150 | 30 | 30 | 0 | 0 |
| 4 | S2-S5 | 100" | - | - | 100' | TIC-LED-1150 | 30 | 30 | 0 | 0 |
| 1 | S7 | 110" | - | - | 110' | TIC-LED-1150 | 30/20" | 30 | 30 | 0 |
| 6 | | | | | | | | 120 | 160 | 30 |

* This structure utilizes a back-to-back mounting configuration



SCALE IN FEET 1:60
 ENGINEERED DESIGN By: Justin Van Soelen • File #181347R1 • 13-Mar-17

1849 Park Plugarville, TX

| GRID SUMMARY | |
|--------------|------------------|
| Name: | Soccer 1-2 |
| Size: | 17 x 7 |
| Spacing: | 10.0' x 10.0' |
| Height: | 3.0' above grade |

| ILLUMINATION SUMMARY | |
|--------------------------------------|-------|
| WARRANTY INFORMATION: IESNA E-185-15 | |
| Entire Grid | |
| Guaranteed Average: | 51.54 |
| Scan Average: | 51.54 |
| Maximum: | 65 |
| Minimum: | 40 |
| Avg / Min: | 1.30 |
| Guaranteed Max / Min: | 1.65 |
| Max / Min: | 1.65 |
| UG (adjacent pts): | 1.21 |
| CU: | 0.78 |
| No. of Points: | 2320 |

| LUMINAIRE INFORMATION | |
|-----------------------|----------------|
| Color / CRI: | 5700K - 75 CRI |
| Luminaire Output: | 121,000 lumens |
| No. of Luminaires: | 180 |
| Total Load: | 163.0 kW |

| Luminaire Type | 150 hrs | 180 hrs | 170 hrs |
|----------------|---------|---------|---------|
| TIC-LED-1150 | +51,000 | +51,000 | +51,000 |

Reported per TM-21.1. See luminaire data sheet for details.

Guaranteed Performance: The ILLUMINATION described above is guaranteed per your Musco Warranty document and includes a 0.95 dirt depreciation factor.

Field Measurements: Individual field measurements may vary from computer-calculated predictions and should be taken in accordance with IESNA SP-55.

Electrical System Requirements: Refer to Amperage Draw Chart and/or the "Musco Control System Summary" for electrical sizing.

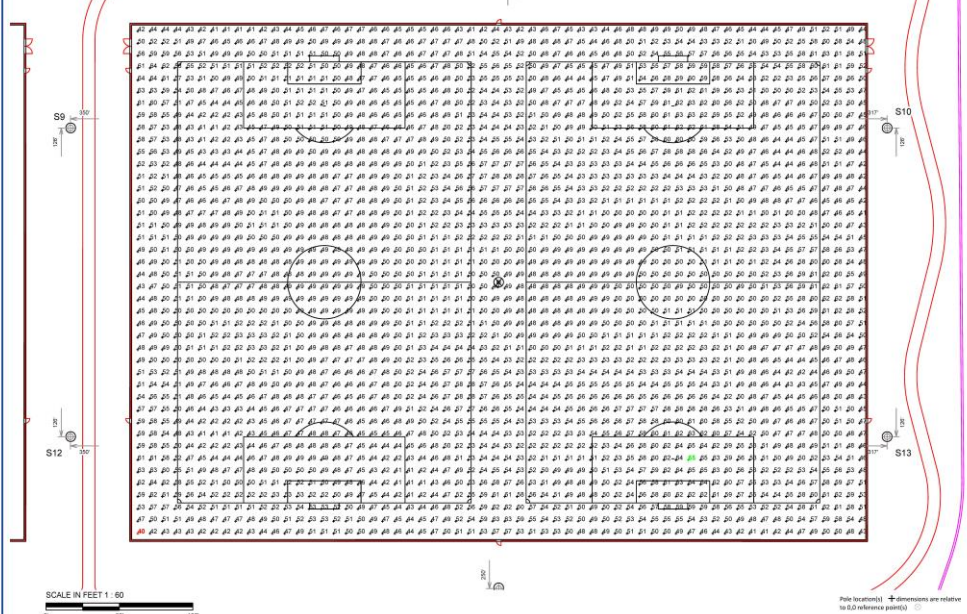
Installation Requirements: Results assume a 3% nominal voltage at line side of the driver and structures located within 3 feet (1m) of design locations.

Not to be reproduced in whole or part without the written consent of Musco Sports Lighting, LLC. ©1985-2017 Musco Sports Lighting, LLC.

ILLUMINATION SUMMARY

| EQUIPMENT LIST FOR AREAS SHOWN | | | | | | | | | | |
|--------------------------------|----------|------|------|-----------|----------|--------------|----------|------|----------|------|
| SP# | LOCATION | SIZE | SEAL | ELEVATION | WARRANTY | TYPE | WARRANTY | TYPE | WARRANTY | TYPE |
| 1 | 56.512 | 100" | - | 100' | 100' | TLC-LED-1150 | 30 | 30 | 30 | 30 |
| 2 | 56.513 | 100" | - | 100' | 100' | TLC-LED-1150 | 30 | 30 | 30 | 30 |
| 3 | 56.514 | 100" | - | 100' | 100' | TLC-LED-1150 | 30 | 30 | 30 | 30 |
| 4 | 56.515 | 100" | - | 100' | 100' | TLC-LED-1150 | 30 | 30 | 30 | 30 |
| 5 | 56.516 | 100" | - | 100' | 100' | TLC-LED-1150 | 30 | 30 | 30 | 30 |
| 6 | 56.517 | 100" | - | 100' | 100' | TLC-LED-1150 | 30 | 30 | 30 | 30 |
| TOTAL | | | | | | | 180 | 180 | 180 | 180 |

* This structure utilizes a back-to-back mounting configuration



ENGINEERED DESIGN By: Justin Van Soelen • File #18134781 • 13-Mar-17

1849 Park PhygneticTX

| GRID SUMMARY | |
|--------------|------------------|
| Name: | Soccer 3-4 |
| Size: | 2' x 2' |
| Spacing: | 10.0' x 10.0' |
| Height: | 3.0' above grade |

| ILLUMINATION SUMMARY | | | |
|---------------------------------|----------------|---------|---------|
| SWATERED HORIZONTAL FOOTCANDLES | | | |
| Even Grid | | | |
| Guaranteed Average: | 50 | | |
| Scan Average: | 56.7% | | |
| Minimum: | 40 | | |
| Max / Min: | 1.29 | | |
| Guaranteed Max / Min: | 2 | | |
| Max / Min: | 1.63 | | |
| UG (adjacent): | 1.19 | | |
| CU: | 0.77 | | |
| No. of Poles: | 2520 | | |
| LUMINAIRE INFORMATION | | | |
| Color CRI: | 9700K, 75 CRI | | |
| Luminaire Output: | 121,000 Lumens | | |
| No. of Luminaires: | 140 | | |
| Total Load: | 161.1 kW | | |
| Luminaire Type | | | |
| TLC-LED-1150 | 150 hrs | 180 hrs | 120 hrs |
| | +51,000 | +51,000 | +51,000 |

Reported per TM-21-11. See luminaire datasheet for details.

Guaranteed Performance: The ILLUMINATION described above is guaranteed per your Musco Warranty document and includes a 0.95 dirt depreciation factor.

Field Measurements: Individual field measurements may vary from computer-calculated predictions and should be taken in accordance with IESNA 90-25.

Electrical System Requirements: Refer to Amperage Draw Chart and/or the "Musco Control System Summary" for electrical wiring.

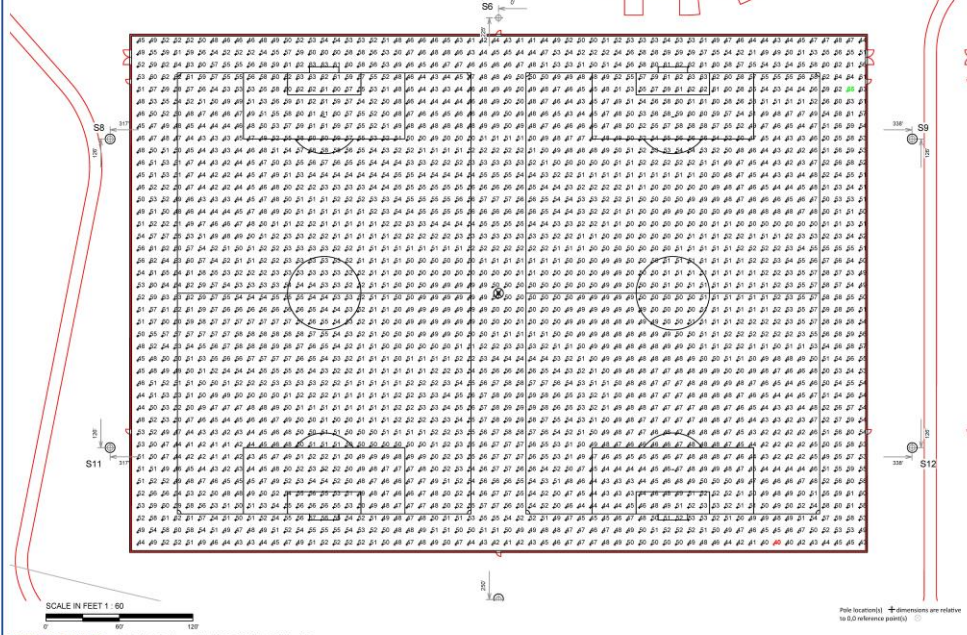
Installation Requirements: Results assume a 3% normal voltage at line side of the driver and structures located within 3 feet (3m) of design locations.

Not to be reproduced in whole or part without the written consent of Musco Sports Lighting, LLC. ©1981-2017 Musco Sports Lighting, LLC.

ILLUMINATION SUMMARY

| EQUIPMENT LIST FOR AREAS SHOWN | | | | | | | | | | |
|--------------------------------|----------|------|------|-----------|----------|--------------|----------|------|----------|------|
| SP# | LOCATION | SIZE | SEAL | ELEVATION | WARRANTY | TYPE | WARRANTY | TYPE | WARRANTY | TYPE |
| 1 | 56.514 | 100" | - | 100' | 100' | TLC-LED-1150 | 30 | 30 | 30 | 30 |
| 2 | 56.515 | 100" | - | 100' | 100' | TLC-LED-1150 | 30 | 30 | 30 | 30 |
| 3 | 56.516 | 100" | - | 100' | 100' | TLC-LED-1150 | 30 | 30 | 30 | 30 |
| 4 | 56.517 | 100" | - | 100' | 100' | TLC-LED-1150 | 30 | 30 | 30 | 30 |
| 5 | 56.518 | 100" | - | 100' | 100' | TLC-LED-1150 | 30 | 30 | 30 | 30 |
| 6 | 56.519 | 100" | - | 100' | 100' | TLC-LED-1150 | 30 | 30 | 30 | 30 |
| TOTAL | | | | | | | 180 | 180 | 180 | 180 |

* This structure utilizes a back-to-back mounting configuration



ENGINEERED DESIGN By: Justin Van Soelen • File #18134781 • 13-Mar-17

1849 Park PhygneticTX

| GRID SUMMARY | |
|--------------|------------------|
| Name: | Soccer 5-6 |
| Size: | 2' x 2' |
| Spacing: | 10.0' x 10.0' |
| Height: | 3.0' above grade |

| ILLUMINATION SUMMARY | | | |
|---------------------------------|----------------|---------|---------|
| SWATERED HORIZONTAL FOOTCANDLES | | | |
| Even Grid | | | |
| Guaranteed Average: | 50 | | |
| Scan Average: | 51.27 | | |
| Minimum: | 40 | | |
| Max / Min: | 1.29 | | |
| Guaranteed Max / Min: | 2 | | |
| Max / Min: | 1.63 | | |
| UG (adjacent): | 1.21 | | |
| CU: | 0.77 | | |
| No. of Poles: | 2520 | | |
| LUMINAIRE INFORMATION | | | |
| Color CRI: | 9700K, 75 CRI | | |
| Luminaire Output: | 121,000 Lumens | | |
| No. of Luminaires: | 140 | | |
| Total Load: | 161.1 kW | | |
| Luminaire Type | | | |
| TLC-LED-1150 | 150 hrs | 180 hrs | 120 hrs |
| | +51,000 | +51,000 | +51,000 |

Reported per TM-21-11. See luminaire datasheet for details.

Guaranteed Performance: The ILLUMINATION described above is guaranteed per your Musco Warranty document and includes a 0.95 dirt depreciation factor.

Field Measurements: Individual field measurements may vary from computer-calculated predictions and should be taken in accordance with IESNA 90-25.

Electrical System Requirements: Refer to Amperage Draw Chart and/or the "Musco Control System Summary" for electrical wiring.

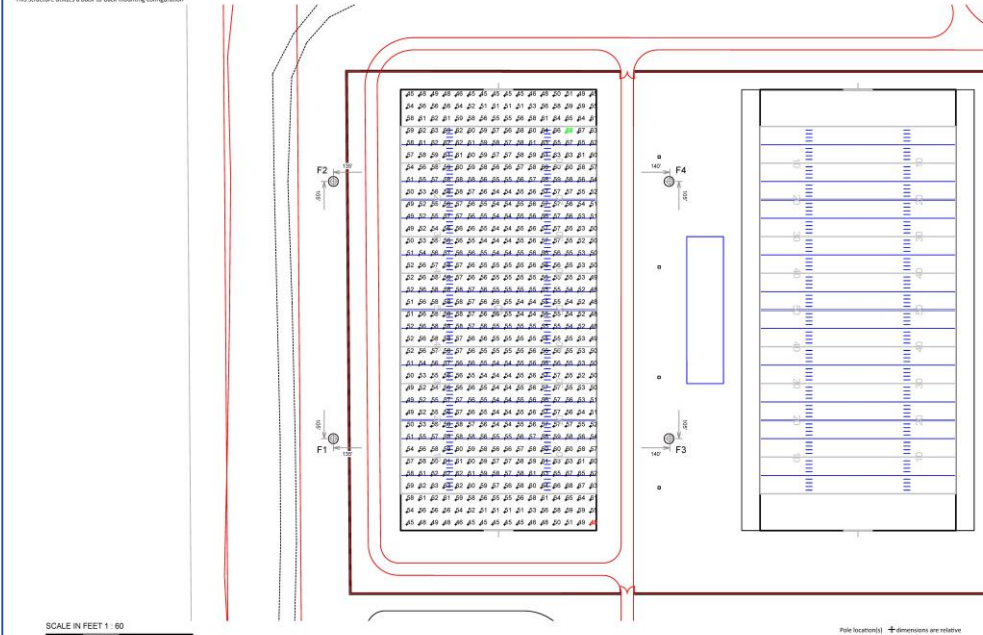
Installation Requirements: Results assume a 3% normal voltage at line side of the driver and structures located within 3 feet (3m) of design locations.

Not to be reproduced in whole or part without the written consent of Musco Sports Lighting, LLC. ©1981-2017 Musco Sports Lighting, LLC.

ILLUMINATION SUMMARY

| EQUIPMENT LIST FOR AREAS SHOWN | | | | | | | | | | |
|--------------------------------|----------|------|-----------|--------|--------------|--------|------|------|-----|---------|
| QTY | Pole | | | HEIGHT | LUMINAIRE | LUMENS | WATT | TYPE | DIM | SPACING |
| | LOCATION | SIZE | ELEVATION | | | | | | | |
| 2 | F3.4 | 80' | 80' | 25' | TLC LED-1150 | 121* | 1 | 1 | 0 | 0 |
| 2 | F3.4 | 80' | 80' | 25' | TLC LED-1150 | 121** | 1 | 1 | 0 | 0 |
| 4 | TOTAL | | | | | 242** | 2 | 2 | 0 | 0 |

* This structure utilizes a back-to-back mounting configuration



SCALE IN FEET 1:60
ENGINEERED DESIGN By: Justin Van Soelen • File #181347R1 • 13-Mar-17

1849 Park
Phyllisville, TX

GRID SUMMARY
Name: Football 1
Size: 180' x 160'
Spacing: 10.0' x 10.0'
Height: 3.0' above grade

ILLUMINATION SUMMARY
GUARANTEED HORIZONTAL FOOTCANDLES
Evening Grid

| | |
|---------------------|-------|
| Guaranteed Average: | 50 |
| Scan Average: | 55.86 |
| Maximum: | 68 |
| Minimum: | 45 |
| Avg / Min: | 1.25 |

Guaranteed Max / Min: 2
Max / Min: 1.52
UG (adjacent pts): 1.24
CU: 0.61
No. of Poles: 576

LUMINAIRE INFORMATION
Color CRI: 5700K - 75 CRI
Luminaire Output: 121,000 Lumens
No. of Luminaires: 44
Total Load: 50.8 kW

| Luminaire Type | 150' h | 180' h | 120' h |
|----------------|---------|---------|---------|
| TLC LED-1150 | +51,000 | +51,000 | +51,000 |

Reported per TM-21-11. See luminaire datasheet for details.

Guaranteed Performance: The ILLUMINATION described above is guaranteed per your Musco Warranty document and includes a 0.95 dirt depreciation factor.

Field Measurements: Individual field measurements may vary from computer-calculated predictions and should be taken in accordance with IESNA 9-25.

Electrical System Requirements: Refer to Amperage Draw Chart and/or the "Musco Control System Summary" for electrical wiring.

Installation Requirements: Results assume a 3% nominal voltage at line side of the driver and structures located within a 3mm (1/8") of design locations.

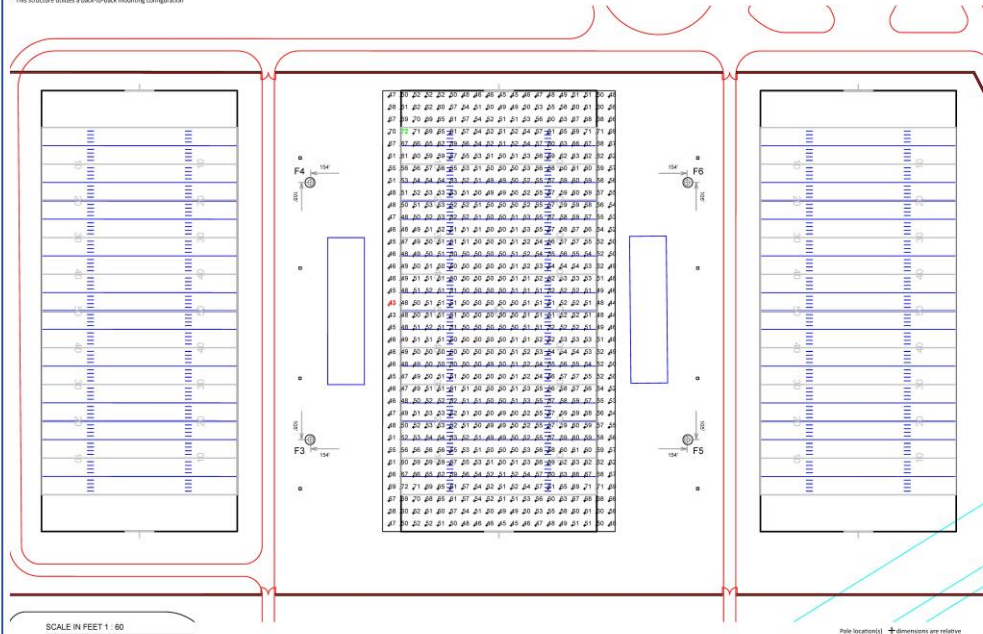
MUSCO Lighting
We Make It Happen.

Not to be reproduced in whole or part without the written consent of Musco Sports Lighting, LLC. ©1981-2017 Musco Sports Lighting, LLC.

ILLUMINATION SUMMARY

| EQUIPMENT LIST FOR AREAS SHOWN | | | | | | | | | | |
|--------------------------------|----------|------|-----------|--------|--------------|--------|------|------|-----|---------|
| QTY | Pole | | | HEIGHT | LUMINAIRE | LUMENS | WATT | TYPE | DIM | SPACING |
| | LOCATION | SIZE | ELEVATION | | | | | | | |
| 3 | F3.4.1B | 80' | 80' | 25' | TLC LED-1150 | 121** | 1 | 1 | 0 | 0 |
| 1 | F3 | 80' | 80' | 25' | TLC LED-1150 | 121** | 1 | 1 | 0 | 0 |
| 4 | TOTAL | | | | | 242** | 2 | 2 | 0 | 0 |

* This structure utilizes a back-to-back mounting configuration



SCALE IN FEET 1:60
ENGINEERED DESIGN By: Justin Van Soelen • File #181347R1 • 13-Mar-17

1849 Park
Phyllisville, TX

GRID SUMMARY
Name: Football 2
Size: 180' x 160'
Spacing: 10.0' x 10.0'
Height: 3.0' above grade

ILLUMINATION SUMMARY
GUARANTEED HORIZONTAL FOOTCANDLES
Evening Grid

| | |
|---------------------|-------|
| Guaranteed Average: | 50 |
| Scan Average: | 53.78 |
| Maximum: | 72 |
| Minimum: | 40 |
| Avg / Min: | 1.24 |

Guaranteed Max / Min: 2
Max / Min: 1.60
UG (adjacent pts): 1.24
CU: 0.61
No. of Poles: 684

LUMINAIRE INFORMATION
Color CRI: 5700K - 75 CRI
Luminaire Output: 121,000 Lumens
No. of Luminaires: 52
Total Load: 59.8 kW

| Luminaire Type | 150' h | 180' h | 120' h |
|----------------|---------|---------|---------|
| TLC LED-1150 | +51,000 | +51,000 | +51,000 |

Reported per TM-21-11. See luminaire datasheet for details.

Guaranteed Performance: The ILLUMINATION described above is guaranteed per your Musco Warranty document and includes a 0.95 dirt depreciation factor.

Field Measurements: Individual field measurements may vary from computer-calculated predictions and should be taken in accordance with IESNA 9-25.

Electrical System Requirements: Refer to Amperage Draw Chart and/or the "Musco Control System Summary" for electrical wiring.

Installation Requirements: Results assume a 3% nominal voltage at line side of the driver and structures located within a 3mm (1/8") of design locations.

MUSCO Lighting
We Make It Happen.

Not to be reproduced in whole or part without the written consent of Musco Sports Lighting, LLC. ©1981-2017 Musco Sports Lighting, LLC.

ILLUMINATION SUMMARY