

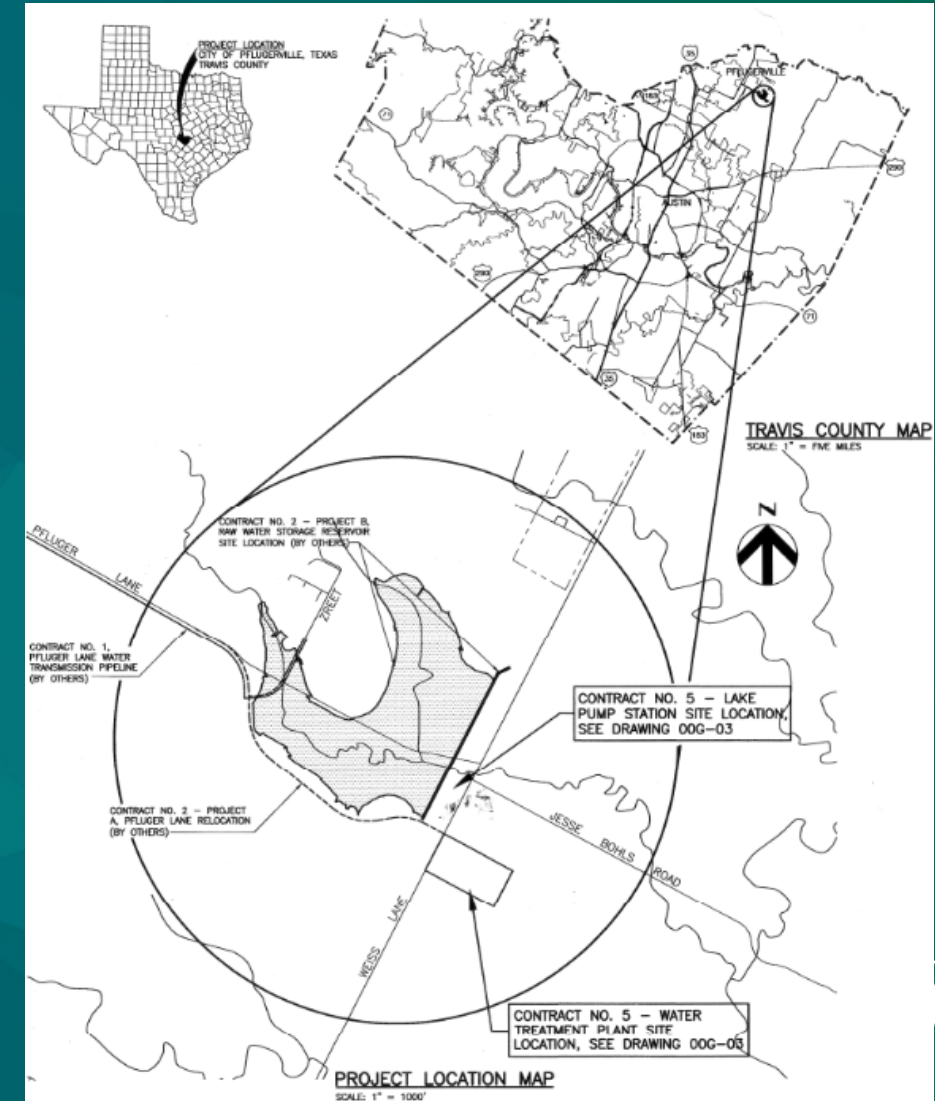
2020-8806

Approving a professional services agreement with Ardurra Group, Inc. in the amount of \$1,947,512 for professional engineering services associated with the Pflugerville Water Treatment Plant Expansion



# Pflugerville WTP Expansion Project Objectives

- Expand the WTP to 30 MGD as identified in the Water Master Plan, Project 9
- Meet and maintain regulatory compliance and safety
- Improve treatment processes and technologies
- Renew aging infrastructure
- Optimize site buildout for future expandability





Expansion of lake pump station

This aerial rendering shows the layout of the Pflugerville WTP expansion. A central rectangular area is outlined in yellow, containing several buildings and tanks. To the left, a road and a canal are visible. To the right, a large body of water is shown. Arrows point from the callout boxes to specific features: the lake pump station expansion, new chemical storage, new baffles in a ground storage tank, new pretreatment trains, membrane filtration system expansion, and high service pump station expansion.

New chemical storage and feed facility

New baffles inside the ground storage tank

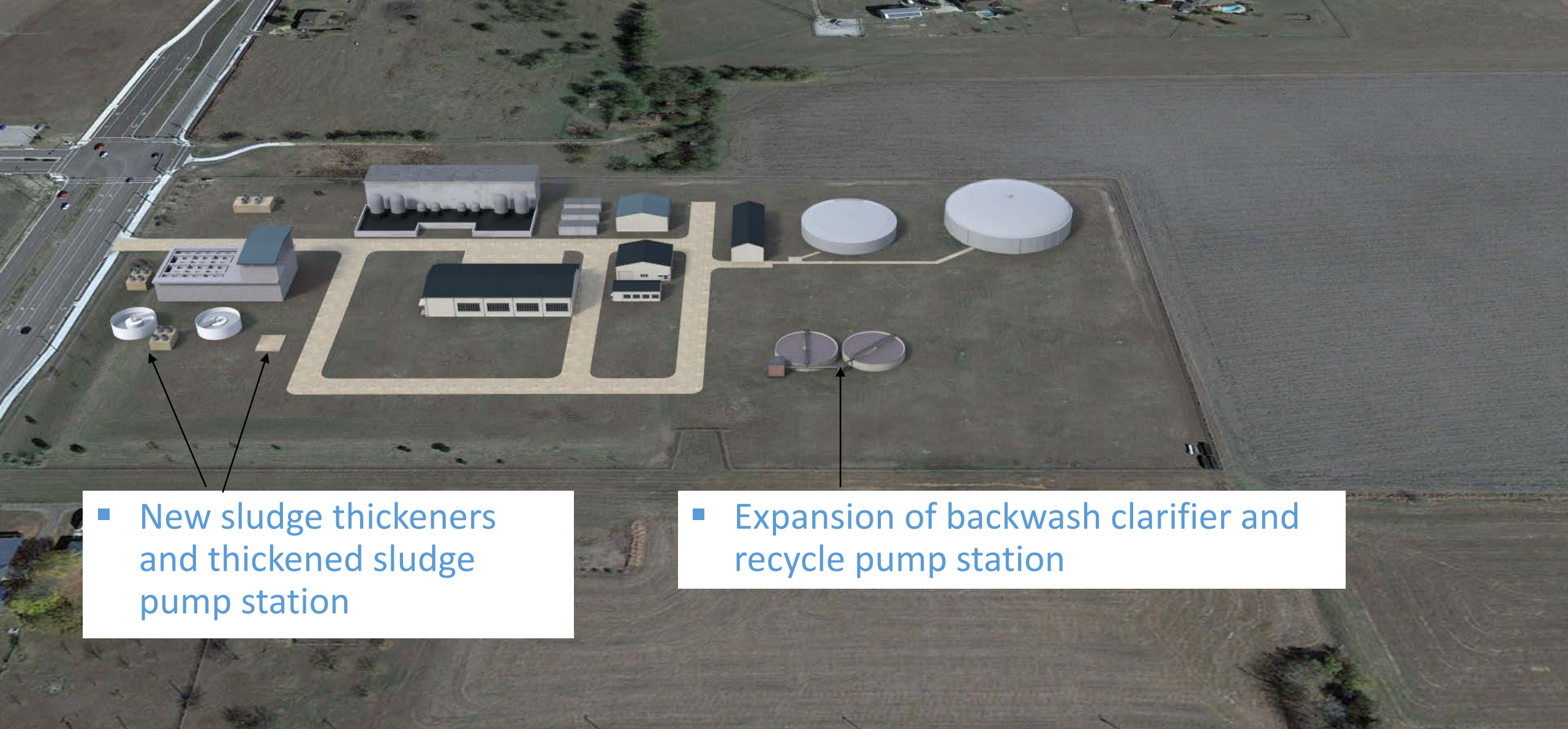
New pretreatment trains

Expansion of membrane filtration system

Expansion of high service pump station

# Pflugerville WTP Expansion Project Overview





- New sludge thickeners and thickened sludge pump station

- Expansion of backwash clarifier and recycle pump station

# Pflugerville WTP Expansion Project Overview

# Pflugerville WTP Expansion

## Scope of Services

Task 1.0 Project management and quality assurance

Task 2.0 Preliminary Engineering Design

Task 3.0 Site topographic survey

Task 4.0 Geotechnical investigation

Task 5.0 TWDB DWSRF funding application support services

Task 6.0 Construction delivery methods

Task 7.0 Regulatory agency coordination with TCEQ and TWDB

Task 8.0 WTP Background drawing development



# Pflugerville WTP Expansion Project Schedule

Task Schedule	Estimated Start	Estimated Completion	Dec	Jan	Feb	Mar	Apr	May	Jun
Task 1.0 Project Management and Quality Assurance	Dec-20	Jun-21							
Task 2.0 Preliminary Engineering Design	Dec-20	Jun-21							
Task 3.0 Site Topographic Survey	Dec-20	Jan-21							
Task 4.0 Geotechnical Investigation	Jan-21	Mar-21							
Task 5.0 TWDB DWSRF Funding Application Support Services	Jan-21	Jun-21							
Task 6.0 Construction Delivery Methods	Mar-21	Apr-21							
Task 7.0 Regulatory Coordination with TCEQ/TWDB	Jan-21	Jun-21							
Task 8.0 WTP Background Drawing Development	Dec-20	Feb-21							





# Staff Recommendation

Staff recommends approving a professional services agreement with Ardurra Group, Inc. in the amount of \$1,947,512 for professional engineering services associated with the Pflugerville Water Treatment Plant Expansion

