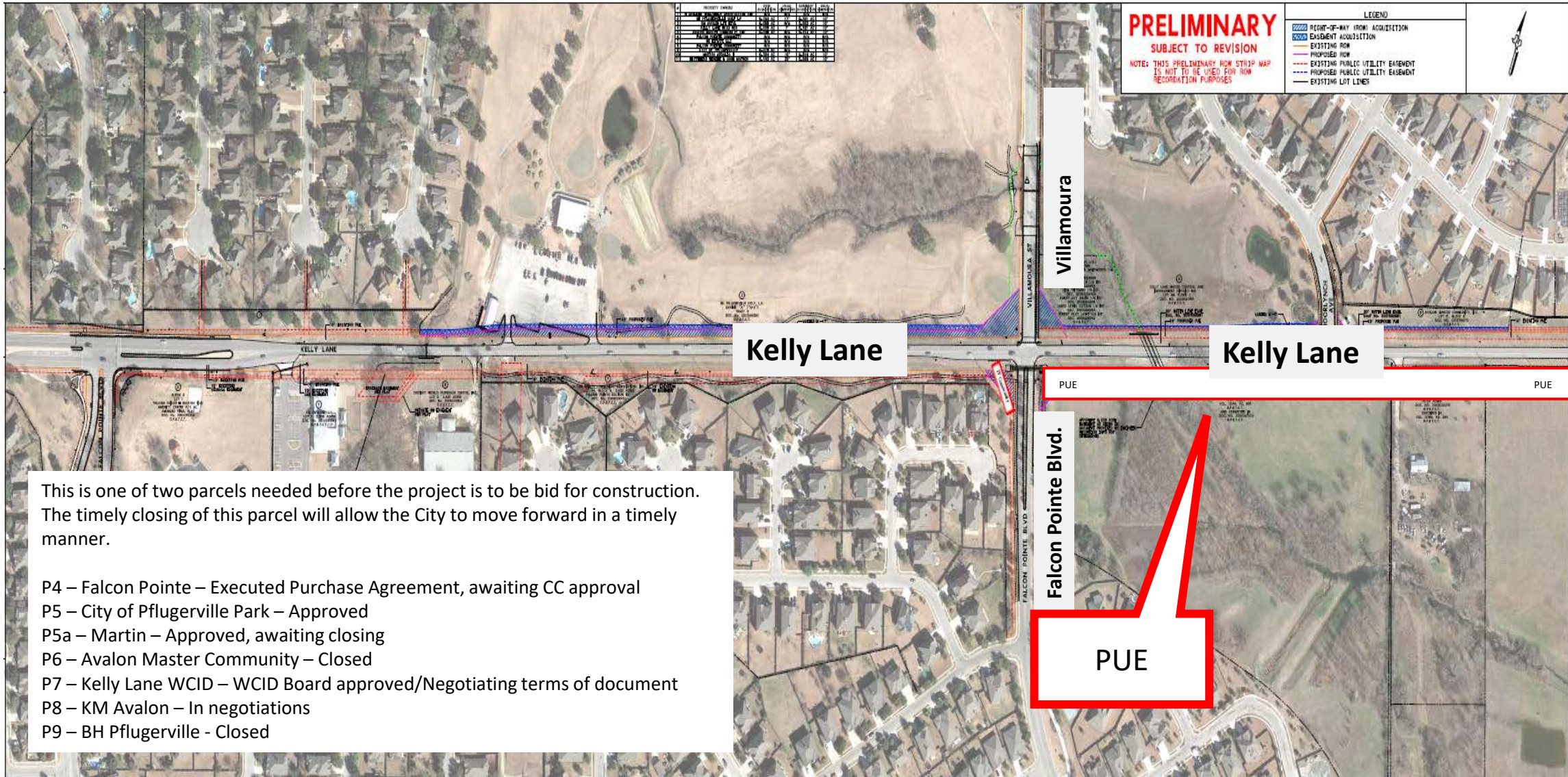


2021-0270

Authorizing the City Manager to execute a Public Utility Easement on City parkland located along Kelly Lane for improvements associated with the Kelly Lane Phase 2 Roadway Project.



Kelly Lane Phase 2 ROW Exhibit



This is one of two parcels needed before the project is to be bid for construction. The timely closing of this parcel will allow the City to move forward in a timely manner.

- P4 – Falcon Pointe – Executed Purchase Agreement, awaiting CC approval
- P5 – City of Pflugerville Park – Approved
- P5a – Martin – Approved, awaiting closing
- P6 – Avalon Master Community – Closed
- P7 – Kelly Lane WCID – WCID Board approved/Negotiating terms of document
- P8 – KM Avalon – In negotiations
- P9 – BH Pflugerville - Closed



Staff Recommendation

Approve the City Manager to execute a Public Utility Easement on City parkland located along Kelly Lane for improvements associated with the Kelly Lane Phase 2 Roadway Project.

