



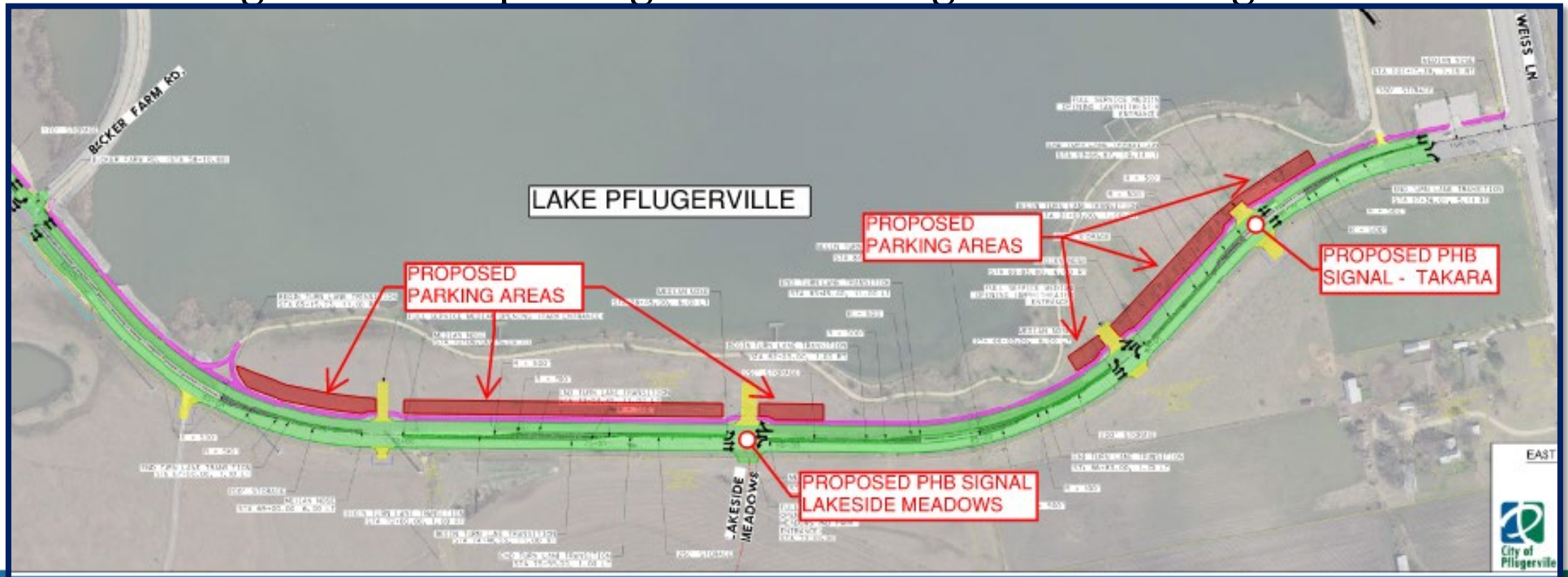
2022-0265

Approving a Professional Services Supplemental Agreement with LJA Engineering, Inc. in the amount of \$81,235.00 associated with the 2020 Transportation Bond Program Project: East Pflugerville Parkway from Colorado Sand Drive to Weiss Lane, and authorizing the City Manager to execute the same.



Scope of Services

- Final design PS&E for Pedestrian Hybrid Beacon (PHB) signals at the intersections of E. Pflugerville Parkway/Lakeside Meadows and E. Pflugerville Parkway/Takara Drive
- Final design PS&E for parking facilities along the Lake Pflugerville Park





Staff Recommendation

Approve a Professional Services Supplemental Agreement with LJA Engineering, Inc. in the amount of \$81,235.00 associated with the 2020 Transportation Bond Program Project: East Pflugerville Parkway from Colorado Sand Drive to Weiss Lane, and authorizing the City Manager to execute the same.