



PFLUGERVILLE TRAILS MASTER PLAN & PARKS DEVELOPMENT PLANS

CONTENTS

- 1 Regional Connection Map
- 2 Trail Masterplan
- 3 Inventory of Trails (Existing + Proposed)
- 4 Trail Prioritization and Planning Areas Map
- 5 Trail Priority Methodology
- 6 Trailheads Map and Descriptions
- 7 Trail Graphic Sections
- 8 Trail Connections Exhibits
- 9 Park Locations Map
- 10 Park Programming Exhibits
- 11 Park Concept Development Plans with Public Input



- 1** Regional Connection Map
- 2 Trail Masterplan
- 3 Inventory of Trails (Existing + Proposed)
- 4 Trail Prioritization and Planning Areas Map
- 5 Trail Priority Methodology
- 6 Trailheads Map and Descriptions
- 7 Trail Graphic Sections
- 8 Trail Connections Exhibits
- 9 Park Locations Map
- 10 Park Programming Exhibits
- 11 Park Concept Development Plans with Public Input



City of
Round
Rock

City of
Hutto

Dell- Round
Rock Campus

Downtown
Pflugerville

Lake Pflugerville

Northeast
Metro Park

City of
Austin

MOKAN Trail

Gilleland Creek Trail

Brushy Creek

Legend

- Trails Existing or Proposed in Pflugerville
- Trails Proposed by Other Entity
- Existing Thoroughfares
- Proposed Thoroughfares
- City Limits
- ETJ Limits

*Note: Map for planning purposes only. Trail routes indicated should not be considered specific trail alignments. This map does not convey rights to the public to use any trail routes shown on this drawing, nor does it exempt any person from trespassing charges. This map does not exempt or supersede any development from adhering to city code or ordinance.

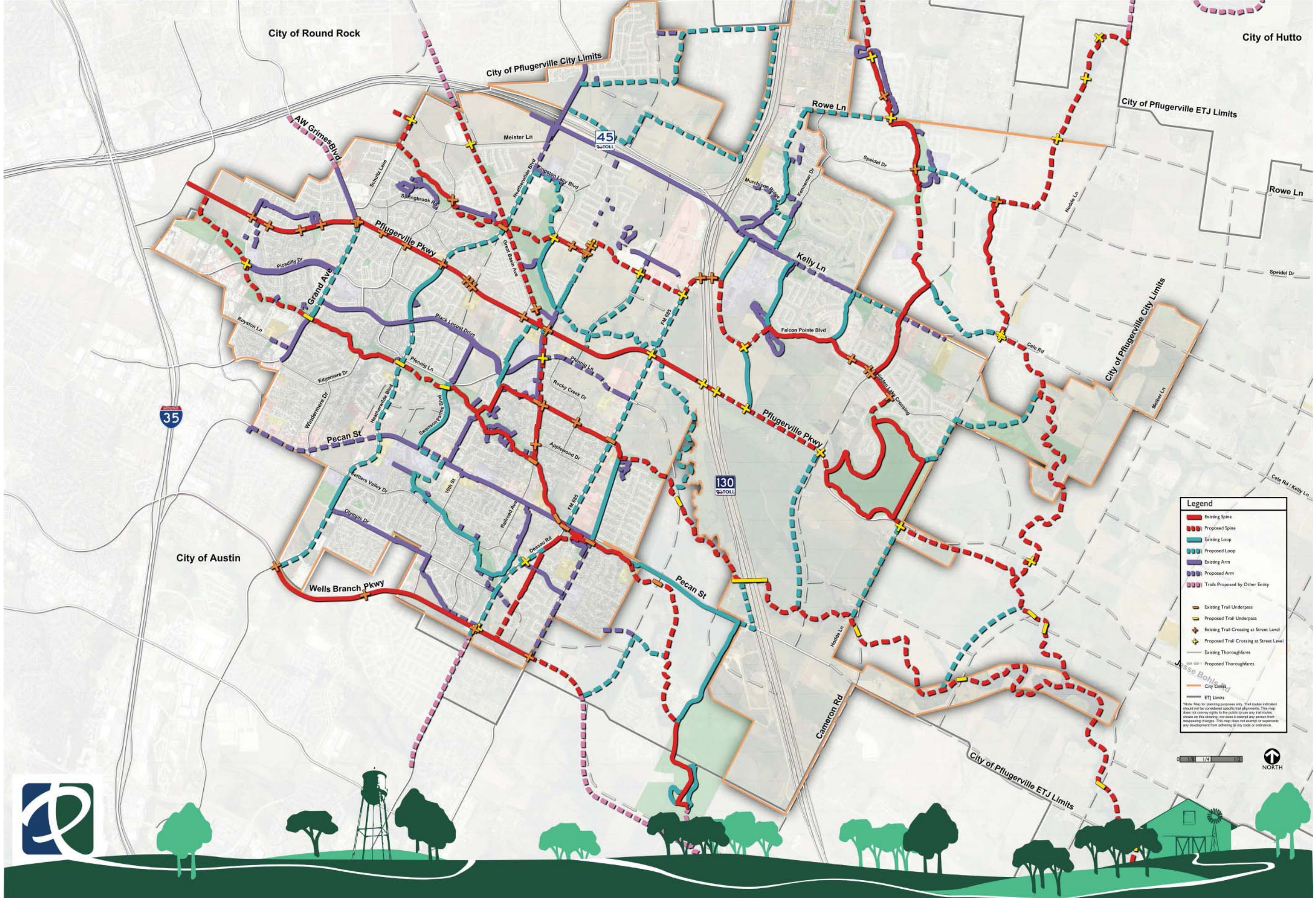
0 1/4 1/2 1

NORTH



- 1 Regional Connection Map
- 2 Trail Masterplan**
- 3 Inventory of Trails (Existing + Proposed)
- 4 Trail Prioritization and Planning Areas Map
- 5 Trail Priority Methodology
- 6 Trailheads Map and Descriptions
- 7 Trail Graphic Sections
- 8 Trail Connections Exhibits
- 9 Park Locations Map
- 10 Park Programming Exhibits
- 11 Park Concept Development Plans with Public Input





City of Round Rock

City of Hutto

City of Pflugerville City Limits

City of Pflugerville ETJ Limits

Rowe Ln

Speidel Dr

Cele Rd / Kelly Ln

Legend

- Existing Spine
- Proposed Spine
- Existing Loop
- Proposed Loop
- Existing Arm
- Proposed Arm
- Trails Proposed by Other Entity
- Existing Trail Underpass
- Proposed Trail Underpass
- Existing Trail Crossing at Street Level
- Proposed Trail Crossing at Street Level
- Existing Thoroughfares
- Proposed Thoroughfares
- City Limits
- ETJ Limits

*Note: Map for planning purposes only. Trail routes indicated should not be considered specific trail alignments. This map does not convey rights to the public to use any trail routes shown on this drawing, nor does it exempt any person from trespassing charges. This map does not warrant or supersede any development from existing city code or ordinance.

0 1/8 1/4 1/2

NORTH



- 1 Regional Connection Map
- 2 Trail Masterplan
- 3 Inventory of Trails (Existing + Proposed)**
- 4 Trail Prioritization and Planning Areas Map
- 5 Trail Priority Methodology
- 6 Trailheads Map and Descriptions
- 7 Trail Graphic Sections
- 8 Trail Connections Exhibits
- 9 Park Locations Map
- 10 Park Programming Exhibits
- 11 Park Concept Development Plans with Public Input



Trail Corridor	Number	Priority	Name	Type	Property Entity	Trail Classification	Trail Composition	Length (in miles)	Width (in feet)
Cottonwood Creek									

Trail Corridor	Number	Name	Type	Property Entity	Trail Classification	Trail Composition	Length (in miles)	Width (in feet)
Wilbarger Creek West	12	Highland Park North Connectors	Internal Connectors			Concrete	0.48	10
	13	Highland Park Trails	Roadway / Park		Spine	Concrete	0.34	10
						Concrete	1.11	10
	29	Spring Trails	Watershed Park		Spine	Concrete	0.57	6
						Concrete	0.61	10

EXISTING	30	Springbrook Glen Trail	Park			Decomposed Granite	0.29	6
	63	Spring Trail Extension	Watershed Park	Public Park	Spine	Concrete	0.38	10
				Right Of Way	Spine	Concrete	0.24	10
	64	Spring Trail in Springbrook Park	Park	Public Park	Spine	Concrete	0.56	10
	65	* Heatherwilde Blvd - Great Base Ave to Kingston Lacy Blvd	Roadway	Right Of Way/Public Park		Concrete	0.58	
	66	* Heatherwilde Blvd - Kingston Lacy Blvd to Hwy 45	Roadway	Right Of Way		Concrete	0.3	
				Right Of Way			0.23	
	67	Highland Park/ Highland Park North Connector	Internal Connectors	Right Of Way			0.03	
				Park	Public Park		0.47	
	68	* Highland Park Spine Trail	Park	Public Park	Spine	Concrete	0.45	10
	69	* Mokan Trial - Pflugerville City Limits to Pflugerville Pkwy	Linear Park	Right Of Way	Spine		1.88	
	70	Highland Park Trails Extension	Roadway / Park	Right Of Way		Concrete	0.26	
	71	Mansions at Stonehill Park Trail	Park	Public Park			0.45	
	72	Connect Highland Park to Stonehill Commercial	Linear Park / Roadway	Right Of Way/Public Park	Spine		1.31	
	73	Connect Stonehill Commercial to Pflugerville Pkwy	Roadway	Right Of Way		Concrete	0.91	
	74	Wilbarger Creek Trail - from Highland Park to Spine Connection	Watershed Park	Agricultural / Vacant & Undeveloped			2.53	
	75	Heritage Park Neighborhood Connector	Park	Public Park			0.05	
	76	* Spine Trail - Heritage Loop to Hodde Ln	Watershed Park	Agricultural / Vacant & Undeveloped	Spine		2.71	
	77	Pecan Street Trail connect to Wilbarger Creek Spine	Roadway	Right Of Way		Concrete	0.54	
	101	Spring Trails Connections to Residents and Springbrook Glen Trail	Watershed Park	Public Park			0.22	

PROPOSED	74	Wilbarger Creek Trail - from Highland Park to Spine Connection	Watershed Park	Agricultural / Vacant & Undeveloped			2.53	
	75	Heritage Park Neighborhood Connector	Park	Public Park			0.05	
	76	* Spine Trail - Heritage Loop to Hodde Ln	Watershed Park	Agricultural / Vacant & Undeveloped	Spine		2.71	
	77	Pecan Street Trail connect to Wilbarger Creek Spine	Roadway	Right Of Way		Concrete	0.54	
	101	Spring Trails Connections to Residents and Springbrook Glen Trail	Watershed Park	Public Park			0.22	
	102	Loop Trail at Northwest Corner of 45 Toll and SH130 Intersection	Linear Park / Roadway	Agricultural / Right Of Way / Vacant & Undeveloped / Residential			4.99	
	103	FM 685 Trail	Roadway	Right Of Way / State Highway		Concrete	2.05	

Trail Corridor	Number	Name	Type	Property Entity	Trail Classification	Trail Composition	Length (in miles)	Width (in feet)
Wilbarger Creek East	7	Commons at Rowe Lane Trail	Watershed Park/ Roadway		Spine	Decomposed Granite	0.5	10
			Watershed Park/ Roadway			Decomposed Granite	0.63	10
			Watershed Park			Decomposed Granite	0.25	8
			Internal Connectors			Concrete	0.15	10
	16	Lake Pflugerville	Park		Spine	Decomposed Granite	2.9	10

EXISTING	23	Trail at Blackhawk	Watershed Park		Spine	Concrete	0.72	10
			Park			Concrete	0.52	10
			Internal Connectors			Concrete	0.05	6
			Roadway/ Park			Concrete	1.57	10
			Park			Concrete	0.2	6
			Park			Concrete	1	10
			Roadway			Concrete	0.31	6
			Roadway			Concrete	1.64	10
			Roadway		Spine	Concrete	0.57	10
			Park			Decomposed Granite	1.6	10
			Roadway		Spine	Concrete	0.25	10
			Roadway			Concrete	0.5	10
	27	Trails at Villages of Hidden Lake	Roadway		Spine	Concrete	0.73	10
			Roadway			Concrete	0.54	6
			Roadway		Spine	Concrete	0.61	10
	28	Trails at Avalon	Roadway			Concrete	0.31	10

PROPOSED	78	Wilbarger Creek Trail - Hodde Ln to Pflugerville City Limits	Watershed Park	Agricultural / Vacant & Undeveloped / Residential	Spine		5.63	
	79						0.96	
	80	Pflugerville Parkway Extension	Roadway	Utilities / Agricultural			1.15	
	81	Connect Wilbarger Creek with Pflugerville Pkwy / Lake	Roadway	Agricultural Land			1.31	
	82	Wilbarger Creek Trail - connection with other branch to Cale Rd	Watershed Park	Agricultural / Vacant & Undeveloped	Spine		4.09	
	83	Hodde Ln Trail - Lake Pflugerville to Hidden Lake Crossing	Roadway	Right Of Way			0.39	
	84	Hidden Lake Crossing/Hodde Ln to Wilbarger Creek	Park	Agricultural / Vacant & Undeveloped / Public Park			0.83	
	85	* Hidden Lake Drive - Hidden Lake Crossing to Lake Pflugerville	Roadway / Park	Right Of Way / Public Park	Spine		0.24	
	86	* Falcon Point Schools Trail - Kelly Ln to Falcon Point Park	Roadway	Right Of Way			0.42	
			Roadway	Right Of Way	Spine		0.64	
	87	Kelly Ln - Murchison Ridge Trail to Murchison Elem.	Roadway	Right Of Way			0.2	
	88	Kelly Ln - Falcon Point Ln Rec Center and Utilities	Roadway	Right Of Way			0.19	
	89	Kelly Ln - Falcon Point Blvd to Hidden Lake Drive	Roadway	Public Park / Right Of Way			0.43	
	90	Kelly Ln - East of Hidden Lake Drive	Roadway	Right Of Way			0.4	
	91	Murchison Park - South Side	Park	Public Park			0.16	
	92		Linear Park	Single Family Residential			0.45	
	93	Stream connection from Cele Rd to Avalon Comm.	Watershed Park	Vacant and Undeveloped			0.68	
	94	* Riojas Elementary School to Speidel Dr	Watershed Park	Public Park / Vacant & Undeveloped	Spine		0.61	
	95	* Connect Trail at Blackhawk to Commons at Rowe Lane Trail	Park	Public Park	Spine		0.04	
	96	Rowe Ln from Trail 92 intersection to Trails at Blackhawk	Roadway	Right Of Way			0.69	
	97	Commons at Rowe Lane Trail to CR 138	Watershed Park	Vacant and Undeveloped	Spine		0.72	

PROPOSED	98	Connection from Hodde Ln/Weiss Ln to Trail at Blackhawk	Watershed Park	Vacant and Undeveloped			0.53	
	99	Speidel Dr - Winding Shore Ln to Harrier Flight Trail	Roadway	Right Of Way	Spine		0.73	
		From Harrier Flight Trail to City of Hutto/Brushy Creek Trail	Watershed Park	Right Of Way / Vacant & Unimproved	Spine		2.18	

Trail Corridor	Number	Name	Type	Property Entity	Trail Classification	Trail Composition	Length (in miles)	Width (in feet)
Pflugerville Parkway	19	Pflugerville Parkway Trail	Roadway		Spine	Concrete	4.55	10
	10	Heatherwilde Blvd Trail	Roadway			Concrete	0.52	10
	5	Cambridge Heights Loop	Park			Decomposed Granite	0.23	10
	4	Cambridge Heights Connectors	Internal Connector			Concrete	0.28	6
	31	Zola Park Trail	Park			Decomposed Granite	0.13	10
	32	Meadows at Cambridge Connectors	Internal Connector			Concrete	0.23	6

PROPOSED	58	Heatherwilde Blvd Connect to Pflugerville Pkwy	Roadway	Right Of Way		Concrete	0.08	
	59	Kuemple Connector North to Pflugerville Pkwy	Linear Park	Vacant/Unimproved & Religious		Concrete	0.3	
	60	* Railroad Ave Trail from Brookhollow Elementary to Pflugerville Pkwy	Roadway	Right Of Way	Spine	Concrete	0.59	
	61	Pfennig Ln	Roadway	Right Of Way		Concrete	0.59	
	62	* Pflugerville Parkway Trail - SH 130 to Lake Pflugerville	Roadway	Right Of Way	Spine	Concrete	1.32	

Trail Corridor	Number	Name	Type	Property Entity	Trail Classification	Trail Composition	Length (in miles)	Width (in feet)
Gilleland Creek								

EXISTING	9	Gilleland Creek Trail West	Watershed Park	Public Park/ Private Park	Spine	Concrete	1.04	10
	22	Swenson Farms Blvd Trail	Roadway			Concrete	0.61	10
	21	Swenson Farm Connectors	Linear Park			Concrete	0.4	10
			Internal Connectors			Concrete	0.27	10
	2	Brookhollow Trail	Linear Park			Concrete	0.51	10
			Park			Concrete	0.68	10
	14	Kuemple Connector North	Roadway/ Linear Park			Concrete	0.31	10
	15	Kuemple Connector South	Roadway/ Linear Park			Concrete	0.41	10
	8	Gilleland Creek Trail	Watershed Park		Spine	Concrete	4.97	10
	18	Pfluger Park Loop	Watershed Park			Concrete	0.34	10
						Concrete	0.32	10
	11	Heritage Loop Trail	Linear Park/ Roadway/ Park		Spine	Concrete	1.2	10

PROPOSED	1	Bohls Loop	Park			Decomposed Granite	0.4	10
						Decomposed Granite	0.36	12
	34	Gilleland Creek Trail Picadilly Dr. to Pflugerville Pkwy	Park	City of Austin/ Private	Spine	Concrete	0.73	10
	35	* Gilleland Creek Trail Grand Avenue Pkwy to Picadilly Dr.	Park	Private Park/ Public Park	Spine	Concrete	0.78	10
	36	* Gilleland Creek Trail- Fill Gap at Swenson Park	Neighborhood Connection	Private Park		Concrete	0.17	6
			Park	Public Park/ Private Park	Spine	Concrete	0.54	10
	37	Brookhollow Trail- Connect Meadow Park South	Park	Public Park		Concrete	0.13	8
	38	* Brookhollow Trail- Fill Gap at Brookhollow Park	Park	Public Park	Spine	Concrete	0.03	10
	39	* Gilleland Creek Trail- Connect Dessau Center to Bohls Loop and fill gap between existing trail and bridge	Retail Center	Private	Spine	Concrete	0.12	10

PROPOSED	40	Gilleland Creek- Pedestrian Bridge crossing over Gilleland Creek in Pecan Park	Park	Public Park	Spine	Bridge	0.01	10
	41	Gilleland Creek Trail- Re-route off Pecan along Gilleland Creek to Northeast Metro Park	Park	Public Park/ Private/ County Park	Spine	Concrete	1.6	10

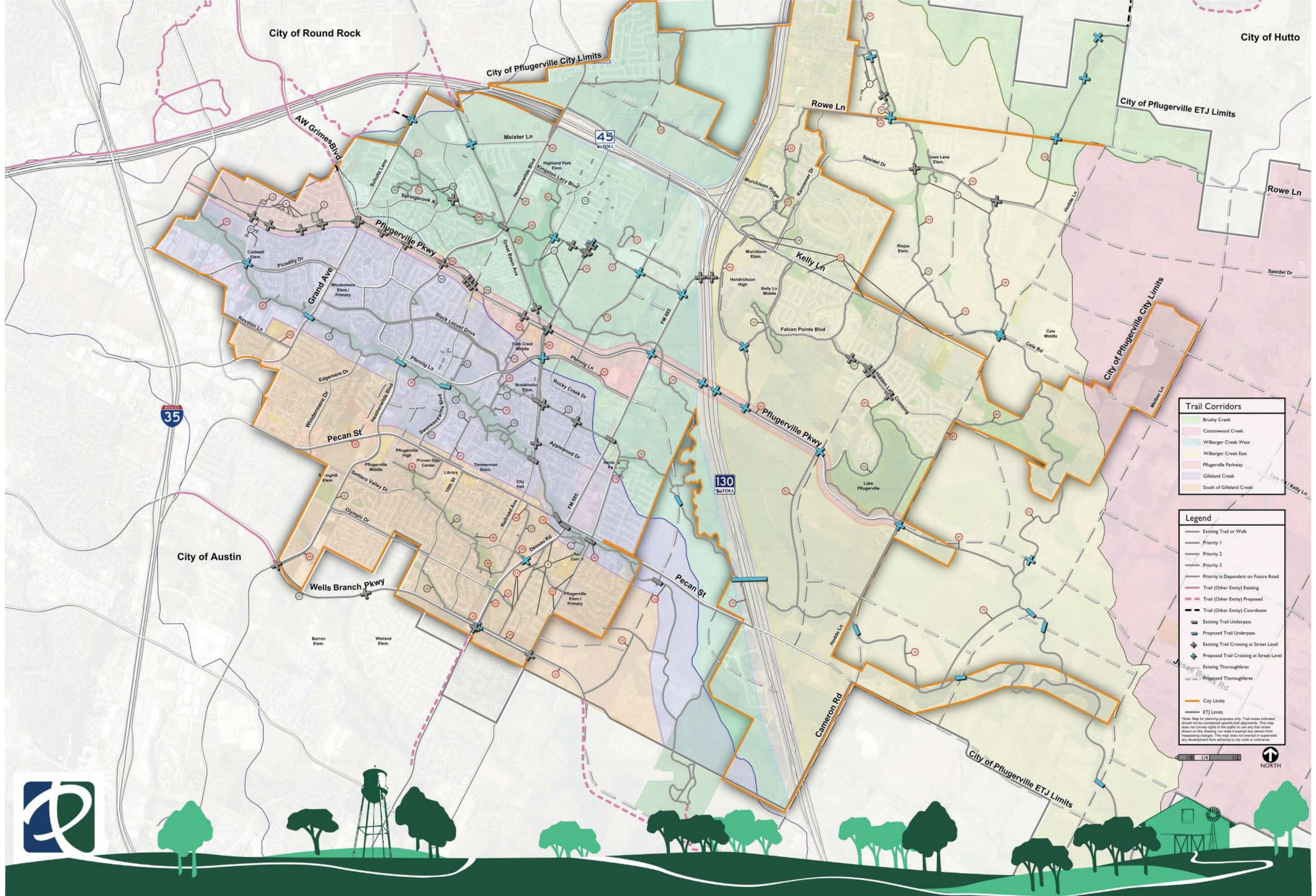
Trail Corridor	Number	Name	Type	Property Entity	Trail Classification	Trail Composition	Length (in miles)	Width (in feet)
South of Gilleland Creek								

EXISTING	20	Settlers Valley Trail	Watershed Park			Concrete	1.82	10
	17	Pfairways Trail	Linear Park			Concrete	0.67	10
	3	Cambridge Estates Connector	Linear Park		Spine	Decomposed Granite	0.29	10
			Internal Connector		Spine	Concrete	0.06	10
			Roadway		Spine	Concrete	0.07	10
	6	Club at Wells Point Trail	Roadway			Concrete	0.83	10
	25	Wells Branch Parkway Trail	Roadway		Spine	Concrete	2.27	10
						Decomposed Granite	0.36	10
	26		Park			Concrete	0.03	6
			Roadway			Concrete	0.05	10

PROPOSED	42		Provide Sidewalk connection to Retail, Indoor Soccer Complex, and Religious Facility	Roadway	Right of Way		Concrete	0.6	6
	43		Pecan Street Pedestrian Sidewalks	Roadway	Right of Way		Concrete	Additional study needed	
	44		Heatherwilde Blvd.	Roadway	Right of Way		Concrete	Confirm w/ city	6
	45		Pfairways Trail	Linear Park	Public Property		Concrete	0.05	10
	46		Settlers Valley Trail	School Connection	School		Concrete	0.33	8
	47	*	Kuemple Connector South - Fill Gap	Linear Park	Private		Concrete	.008 (40 LF)	10
	48		Settlers Valley Trail- Fill Gap between neighborhood stub out and trail	Park	Public Park		Concrete	0.03	6
	49		Settlers Valley Trail- Connect Wuthrich Park to trail	Park	Private Park		Concrete	0.04	6
	50		Mountain Creek Trail- Connect to Wells Branch Blvd. Trail	Roadway	Right of Way		Concrete	0.23	10
	51		Dessaua Road- Standard sidewalk	Roadway	Right of Way		Concrete	0.84	6
	52		Olympic Drive- Standard Sidewalk	Roadway	Right of Way		Concrete	0.29	6
	53	*	Cambridge Estates Connector- Trail Extension	Roadway	Right of Way	Spine	Concrete	0.25	10
				Linear Park	Public Park, Private	Spine	Decomposed Granite	0.5	10
	54		Wells Branch Blvd. Extension- Dessau to Immanuel Rd.	Roadway	Right of Way	Spine	Concrete	0.28	10
	55		Wells Branch Blvd. Extension- Immanuel Rd. to City Limits	Roadway	Right of Way	Spine	Concrete	0.6	10
56	*	Trail along future roadway connecting to Gilliland Creek Trail and Gatlinburg Neighborhood	Roadway	Right of Way / Private		Concrete	1.23	10	
57		Immanuel Road- Standard Sidewalk	Roadway	Right of Way		Concrete	0.65	6	

- 1 Regional Connection Map
- 2 Trail Masterplan
- 3 Inventory of Trails (Existing + Proposed)
- 4 Trail Prioritization and Planning Areas Map**
- 5 Trail Priority Methodology
- 6 Trailheads Map and Descriptions
- 7 Trail Graphic Sections
- 8 Trail Connections Exhibits
- 9 Park Locations Map
- 10 Park Programming Exhibits
- 11 Park Concept Development Plans with Public Input





- 1 Regional Connection Map
- 2 Trail Masterplan
- 3 Inventory of Trails (Existing + Proposed)
- 4 Trail Prioritization and Planning Areas Map
- 5 Trail Priority Methodology**
- 6 Trailheads Map and Descriptions
- 7 Trail Graphic Sections
- 8 Trail Connections Exhibits
- 9 Park Locations Map
- 10 Park Programming Exhibits
- 11 Park Concept Development Plans with Public Input



Proposed Trail Priority

Trail Number: _____
Trail Location: _____

Trail Priority = (Prior Commitments A(.10) + Demand B(.30) + Connectivity C(.30) + Feasibility D(.30)) x 100

10% Prior Commitments

- Funded?
4 = Fully Funded 2 = Partial Funding 0 = No Funding
- Design Stages?
4 = CD 3 = Design 1 = Planning
- Alternate Route Already Available?
4 = No 2 = Yes, but poor conditions 0 = Yes

0.00 Prior Commitments A = Section Total/12

30% Demand

- Close to Schools?
8 = 2+ schools within 1/4 mile radius 6 = within 1/4 mile 4 = within 1/2 mile 2 = within 1 mile 0 = None within 1 mile
- Close to Existing Parks?
4 = 2+ parks within 1/4 mile radius 3 = within 1/4 mile 2 = within 1/2 mile 1 = within 1 mile 0 = None within 1 mile
- Close to Rec Centers?
4 = Adjacent to Rec Center 3 = within 1/4 mile 2 = within 1/2 mile 1 = within 1 mile 0 = None within 1 mile
- Close to Future Parks?
4 = 2+ Parks within 1/4 mile radius 3 = within 1/4 mile 2 = within 1/2 mile 1 = within 1 mile 0 = None within 1 mile
- Close to Major Destination (Library, Lake Pflugerville, Downtown/Pecan)
4 = Adjacent to Major Destination 3 = within 1/4 mile 2 = within 1/2 mile 1 = within 1 mile 0 = None within 1 mile
- Close to Bus Stops?
2 = within a CAMPO growth center 1 = within 1/2 mile of Future Stops planned in Project Connect 0 = Not near a proposed bus route

0.00 Demand B = Section Total/26

30% Connectivity

- Fills Gap in Existing Trail system
4 = connects 2 existing Trail Systems 2 = connects 2 existing trails 0 = Not Existing Trail system related
- A part of the Spine System
4 = Within a proposed spine system 2 = Feeder into proposed spine system 0 = Not Spine Related
- Land Use Connection
4 = Connection to School/Park/Public Land Use 3 = Connection to Commercial Land Use 2 = Residential Connection 1 = Other Land Use Connection

0.00 Connectivity C = Section Total /12

30% Feasibility / Cost

- Crossings Needed?
4 = Barrier Free 3 = Local Road Crossing 2 = Collector Roads or Stream Crossing 1 = Highway or Major Waterway Crossing
- Land Ownership
4 = City, County, or Federal Land 3 = Commercial Land or Interested Public/Private Partnership 2 = Residential Land 1 = Ownership unsure
- Road Association
4 = Fits into a future Planned ROW (unbuilt) or Not on a road system 3 = Room was left in ROW for Future Trail 2 = A trail will just barely fit in Existing ROW 0 = No Room for a trail in ROW
- Investment/Cost Estimate
4 = <\$25k 3 = \$25-50k 2 = \$50-100k 1 = \$100-250k 0 = >\$250k

0.00 Feasibility D = Section Total/12

Trail Priority = 0.0



- 1 Regional Connection Map
- 2 Trail Masterplan
- 3 Inventory of Trails (Existing + Proposed)
- 4 Trail Prioritization and Planning Areas Map
- 5 Trail Priority Methodology
- 6 Trailheads Map and Descriptions**
- 7 Trail Graphic Sections
- 8 Trail Connections Exhibits
- 9 Park Locations Map
- 10 Park Programming Exhibits
- 11 Park Concept Development Plans with Public Input



Existing and Proposed Trailheads

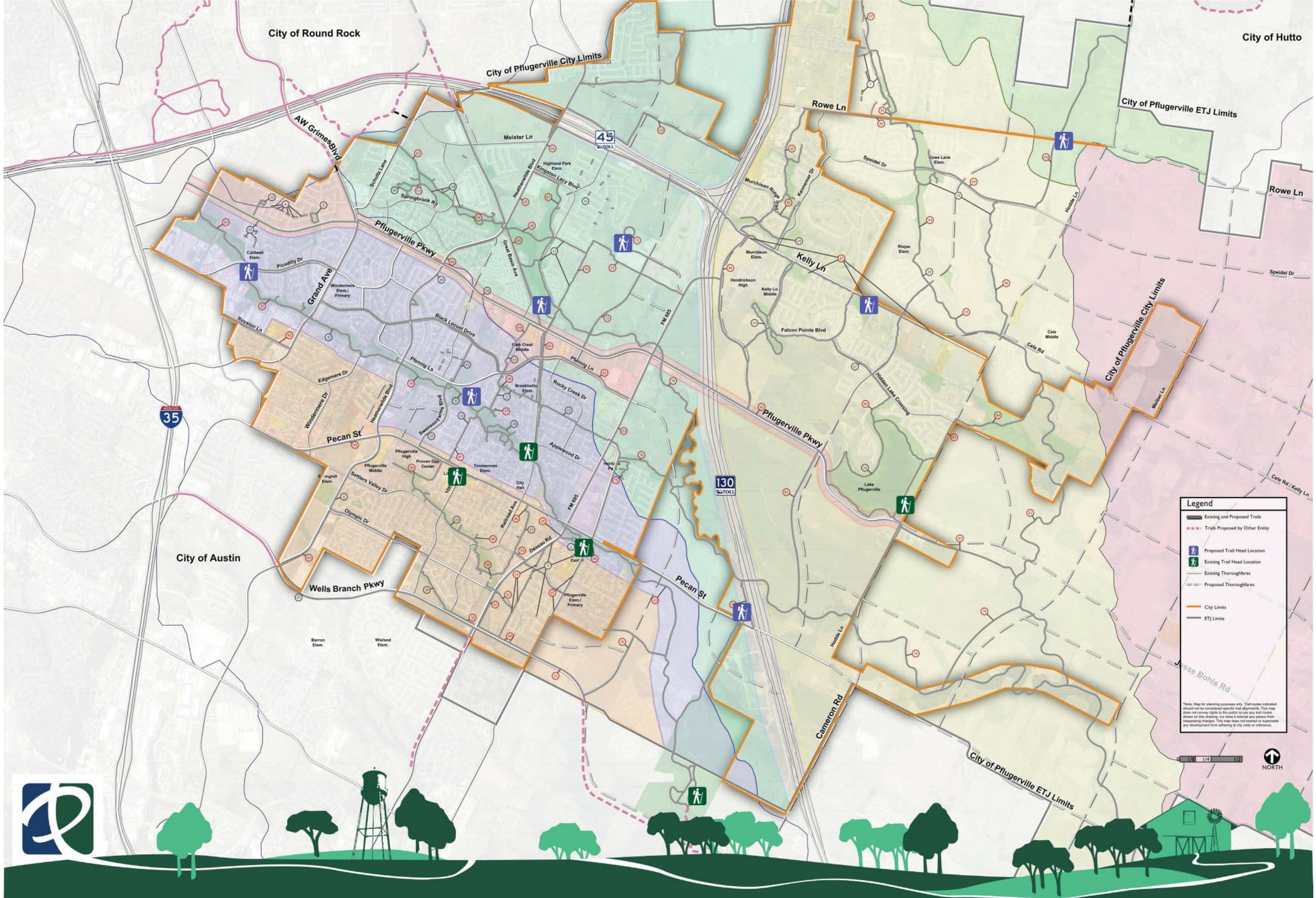
Existing Trail Head Locations (some improvements may need to be made to the facilities):

- Gilleland Creek Park (Off of Railroad Ave): Existing Parking, Pool Facilities, and a Trail Map are found in the park. The point is along the Gilleland Creek Trail and across the street from the Heritage Loop Trail. Many spine trail corridors are easily accessible from this point.
- Recreation Center (Near Bohls Park): Gilleland Creek trail runs adjacent to the Rec Center. The existing center has parking, restrooms, and is home to many existing activities.
- Pflugerville Library: A gathering point that is accessible to Pecan Street, Pflugerville High School, and Settlers Valley Trail. The library offers opportunities for public restrooms and is a large gathering point for people on the south side of town/ south of Gilleland Creek.
- Lake Pflugerville: A point of recreation, trails, and community for many people in Pflugerville. Additional parking and restrooms are planned for the area. This is already a connection point for many Pflugerville residents.
- Northeast Metro Park: Many types of recreation fields are found in the area. There are trails, playgrounds, shelters, grills, restrooms, drinking fountains, and parking found in the park. The park is intended as a regional park for the Austin Area and is suited to hold larger youth events and tournaments. The Gilleland Creek Trail connects to the park and will eventually be the connections to City of Austin Trails.

Proposed Trail Head Locations:

- Picadilly Park: A proposed trail head would serve as a starting point for the Gilleland Creek Trail that runs through downtown Pflugerville. It is also within close proximity to the Pflugerville Parkway trail. Parking, trails, signage, and restrooms are proposed for this park.
- Kuempel Park: Gilleland Creek trail is expected to be one of the highest trafficked trails in Pflugerville. It is set apart from the road system and stretches from one side of Pflugerville to the City of Austin trails. Gilleland Creek Park is an existing park that already gets a lot of use, so Kuempel would help balance the activity at Gilleland Creek Park. It is also a location of future restrooms, drinking fountain, parking and ball fields. This location is also near the split of the Gilleland Creek Spine Corridor. This allows multiple spaces for people to go.
- South Highland Park: The MoKan Trail Corridor and Pflugerville Parkway Corridor intersect very near Highland Park. A trail head offers options of trails to choose from and is highly accessible to North Pflugerville residents.
- Mansions at Stonehill Park: The park is near a proposed spine corridor that connects City of Round Rock trails across SH 130 through Falcon Point Schools and to Lake Pflugerville. The trail head is easily accessible from the commercial shopping area and the Highland Park North neighborhood.
- Kelly Lane Park: Kelly Lane is highly accessible for people from the surrounding neighborhoods and people traveling to get to the park/trail head. The park is in close proximity to an east/west Spine Corridor (Round Rock to Lake Pflugerville) and a north/south Spine Corridor.
- Rowe Ln: The trail head is along a north/south spine corridor that connects up to Brushy Creek, the City of Hutto, and Pflugerville ETJ. There is easy access to Lake Pflugerville that creates connections to the rest of the city. This is a huge connection to trails that extend across the north side of the metropolitan area.
- Pecan Street and SH 130: This trail head would serve as a regional location for people to access. There is also talk of a park & ride for Pflugerville. Utilizing the same infrastructure for a park & ride and trail head would be ideal. The trails would be within easy distance the Northeast Metro Park's trail head, access to downtown Pflugerville, and access to an ideal trail crossing under SH 130.





City of Round Rock

City of Hutto

City of Pflugerville City Limits

City of Pflugerville ETJ Limits

AW Grimes Blvd

Meister Ln

45

Rowe Ln

Speidel Dr

Rowe Lane Elem.

Rowe Ln

Speidel Dr

Pflugerville Pkwy

Grand Ave

Picadilly Dr

Royston Ln

Pecan St

Wells Branch Pkwy

City of Austin

Highland Park Elem.

Kingston Lacy Blvd

Housewilde Blvd

Great Bath Ave

Murchison Ridge

Murchison Elem.

Hendrickson High

Kelly Ln Middle

Falcon Pointe Blvd

Pflugerville Pkwy

Hidden Lake Crossing

Lake Pflugerville

Cele Middle

Cele Rd

Meister Ln

Meister Ln

Meister Ln

Meister Ln

Meister Ln

Meister Ln

Meister Ln

Meister Ln

Meister Ln

Meister Ln

Meister Ln

Meister Ln

Meister Ln

Meister Ln

Meister Ln

Meister Ln

Meister Ln

Meister Ln

Meister Ln

Meister Ln

Meister Ln

Meister Ln

Meister Ln

Meister Ln

Meister Ln

Meister Ln

Meister Ln

Meister Ln

Meister Ln

Meister Ln

Meister Ln

Meister Ln

Meister Ln

Meister Ln

Legend

- Existing and Proposed Trails
- Trails Proposed by Other Entity
- Proposed Trail Head Location
- Existing Trail Head Location
- Existing Thoroughfares
- Proposed Thoroughfares
- City Limits
- ETJ Limits

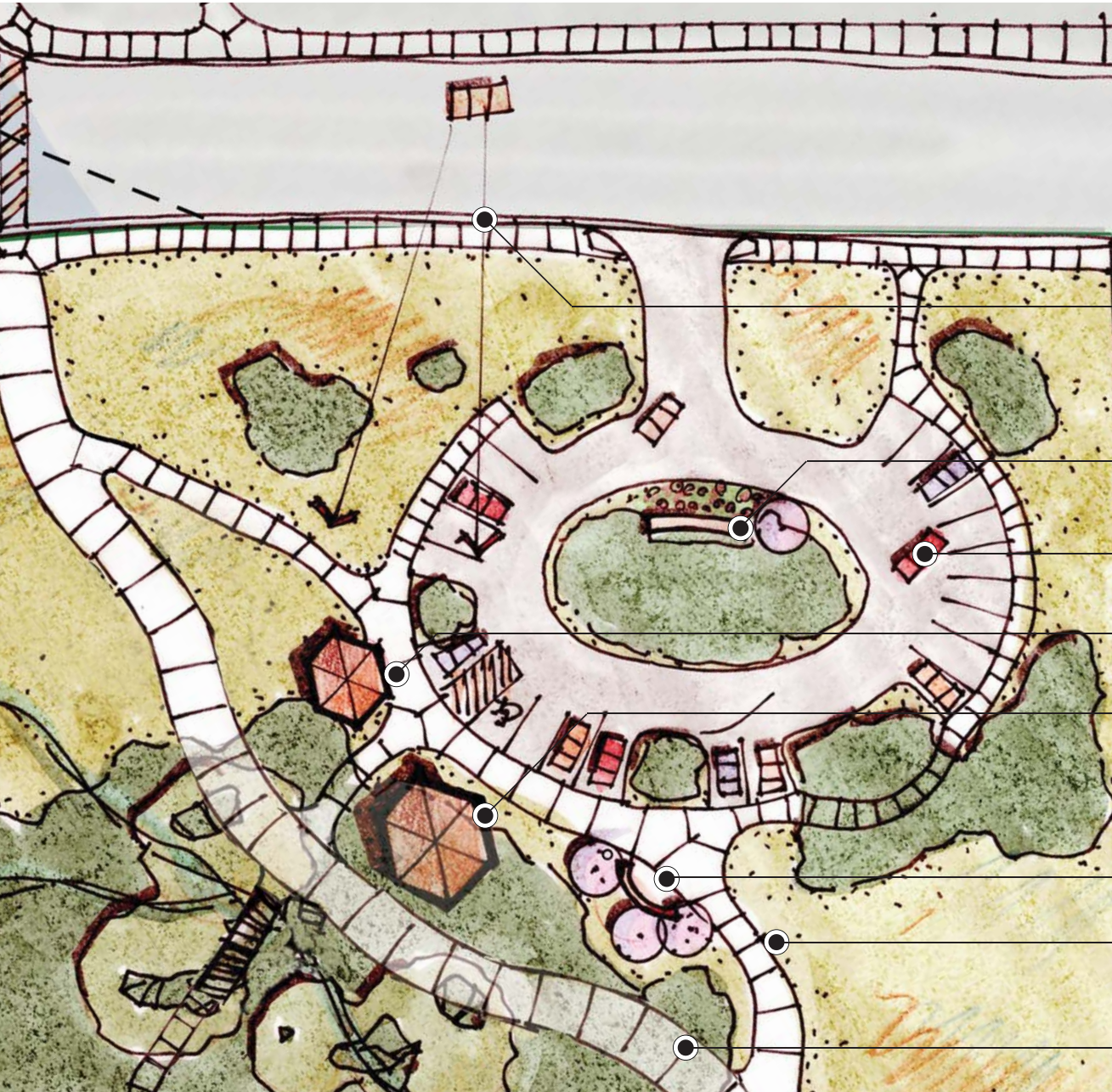
*This map is for planning purposes only. Trail routes indicated should not be considered specific trail alignments. This map does not convey rights to the public to use any trail routes shown on this drawing, nor does it exempt any person from trespassing charges. This map does not warrant or supersede any development from adhering to city code or ordinance.

0 1/8 1/4 1/2

NORTH



Destination Trailheads



- Maintain view corridor from street to restroom location
- Park Identity Signage
- Parking
- Restroom
- Shelter
- Trail signage and trash receptacle
- Connecting trail
- Primary trail

Trail Access Point



Trailhead Access Points

Wayfinding signage, seating opportunities, and a resting point offer places for people to stop along the trail. Creates natural points for pedestrians and cyclists to gather.





Shelter



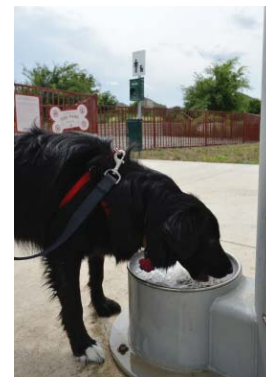
Benches and Trash Receptacles



Parking



Water



Exercise or Stretch Equipment



Maps and Signage

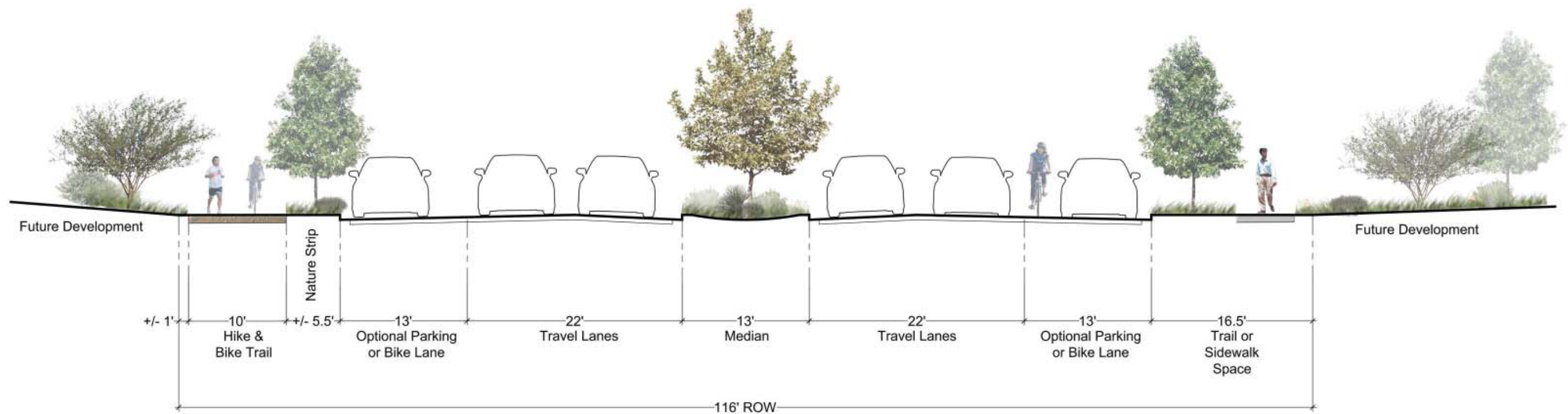


Restrooms



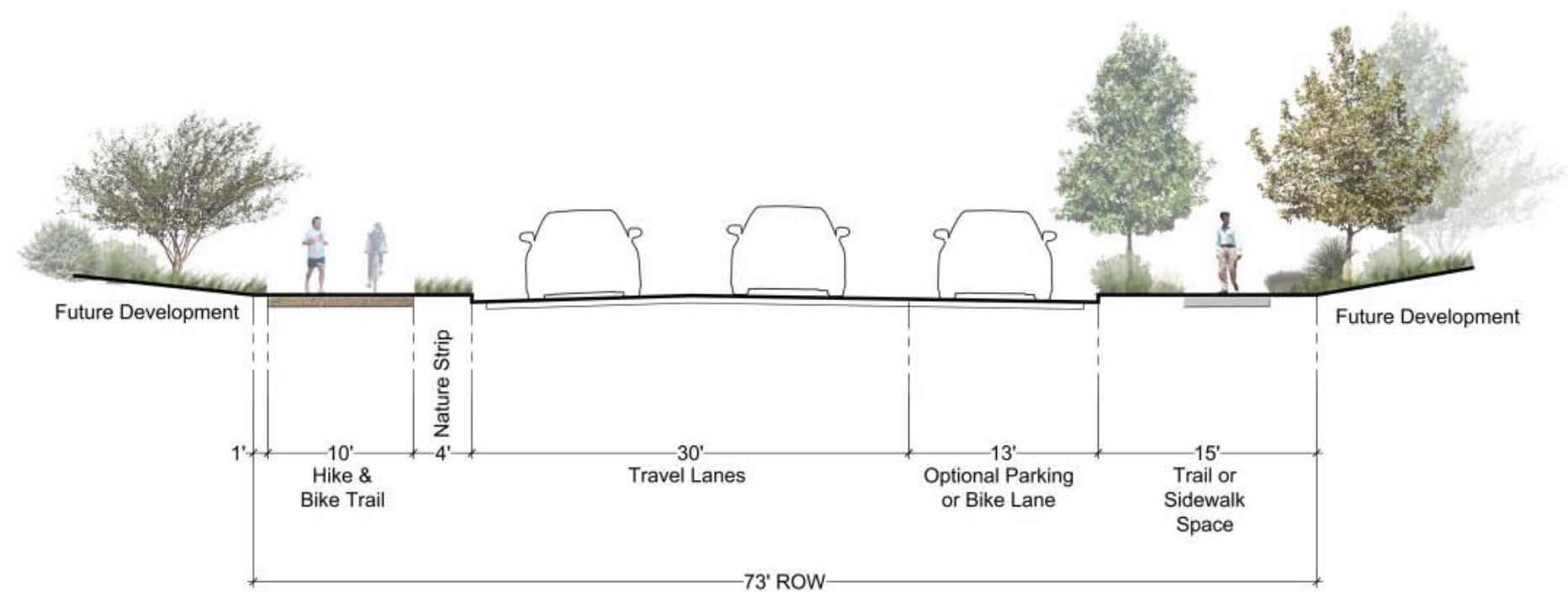
- 1 Regional Connection Map
- 2 Trail Masterplan
- 3 Inventory of Trails (Existing + Proposed)
- 4 Trail Prioritization and Planning Areas Map
- 5 Trail Priority Methodology
- 6 Trailheads Map and Descriptions
- 7 Trail Graphic Sections**
- 8 Trail Connections Exhibits
- 9 Park Locations Map
- 10 Park Programming Exhibits
- 11 Park Concept Development Plans with Public Input





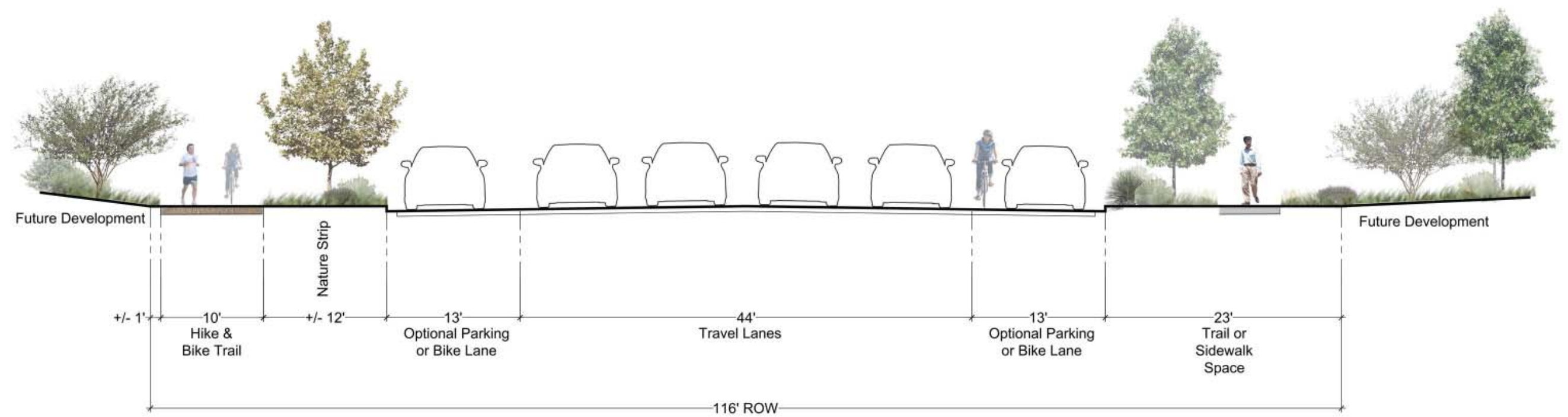
Pflugerville Trails - Arterial
(4-lane) Street Section
January 16, 2014





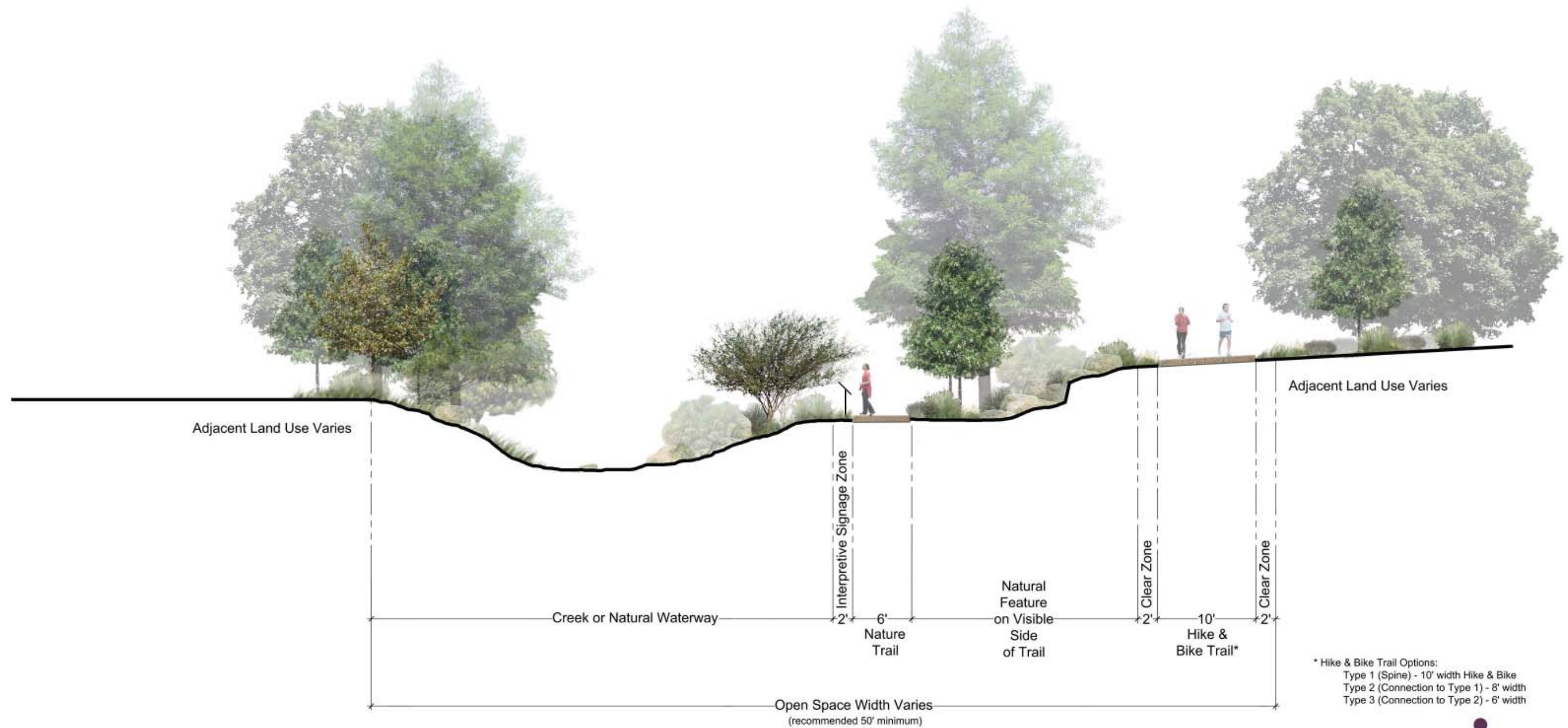
*Pflugerville Trails - Collector
Street (2-Lane) Section
January 16, 2014*





*Pflugerville Trails - Collector
(4-lane) Street Section
January 16, 2014*

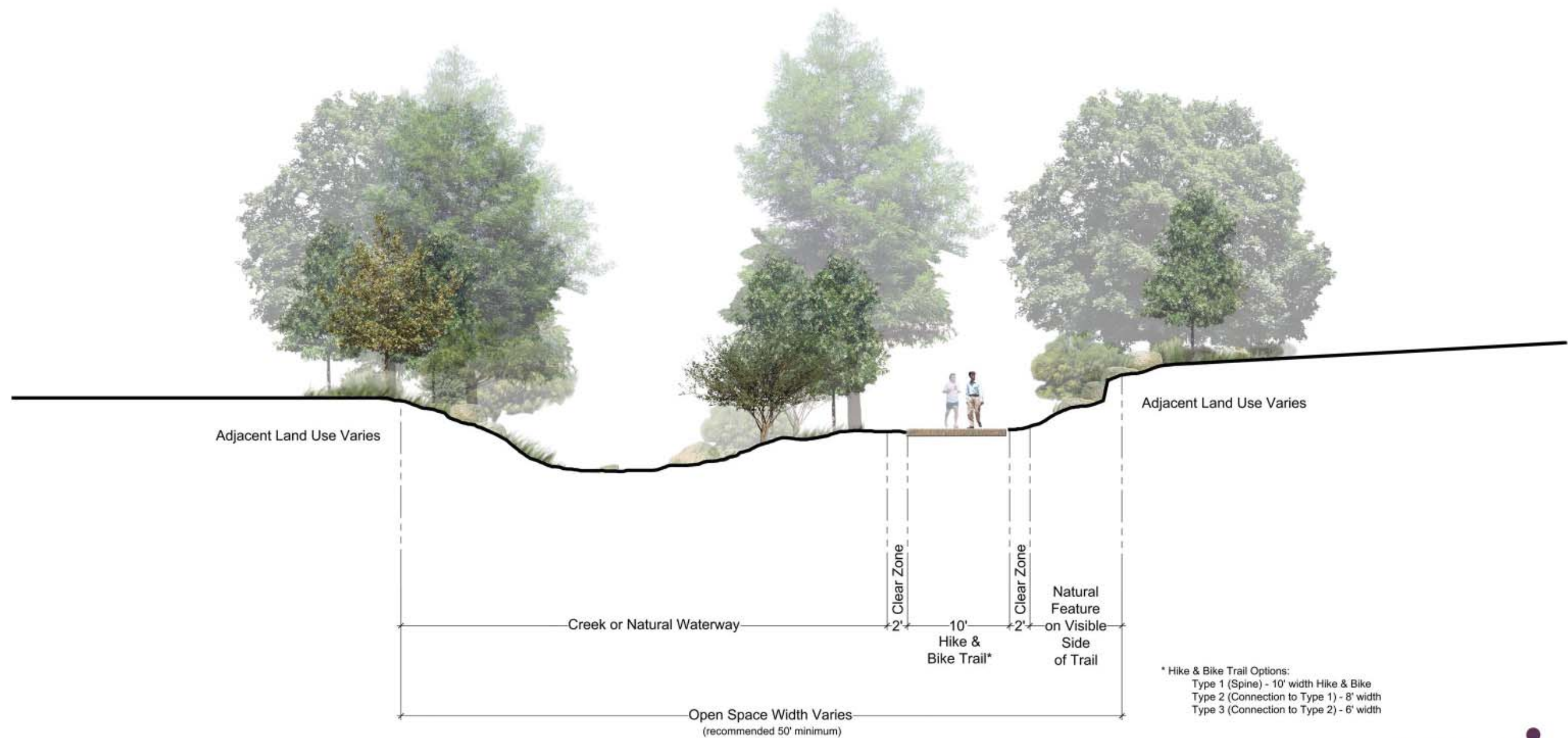




**Pflugerville Trails -
Nature Trail**
January 16, 2014

0 2.5 5 10





Pflugerville Trails -
Park Trail
 January 16, 2014

0 2.5 5 10

