



FM685 East

Phase 1: 0.5 mi

\$180,000

Phase 2: 0.3 mi

\$185,000

Phase 3: 0.2 mi

\$128,000

Total: \$493,000

FM685 West

Phase 1: 0.6 mi

\$228,000

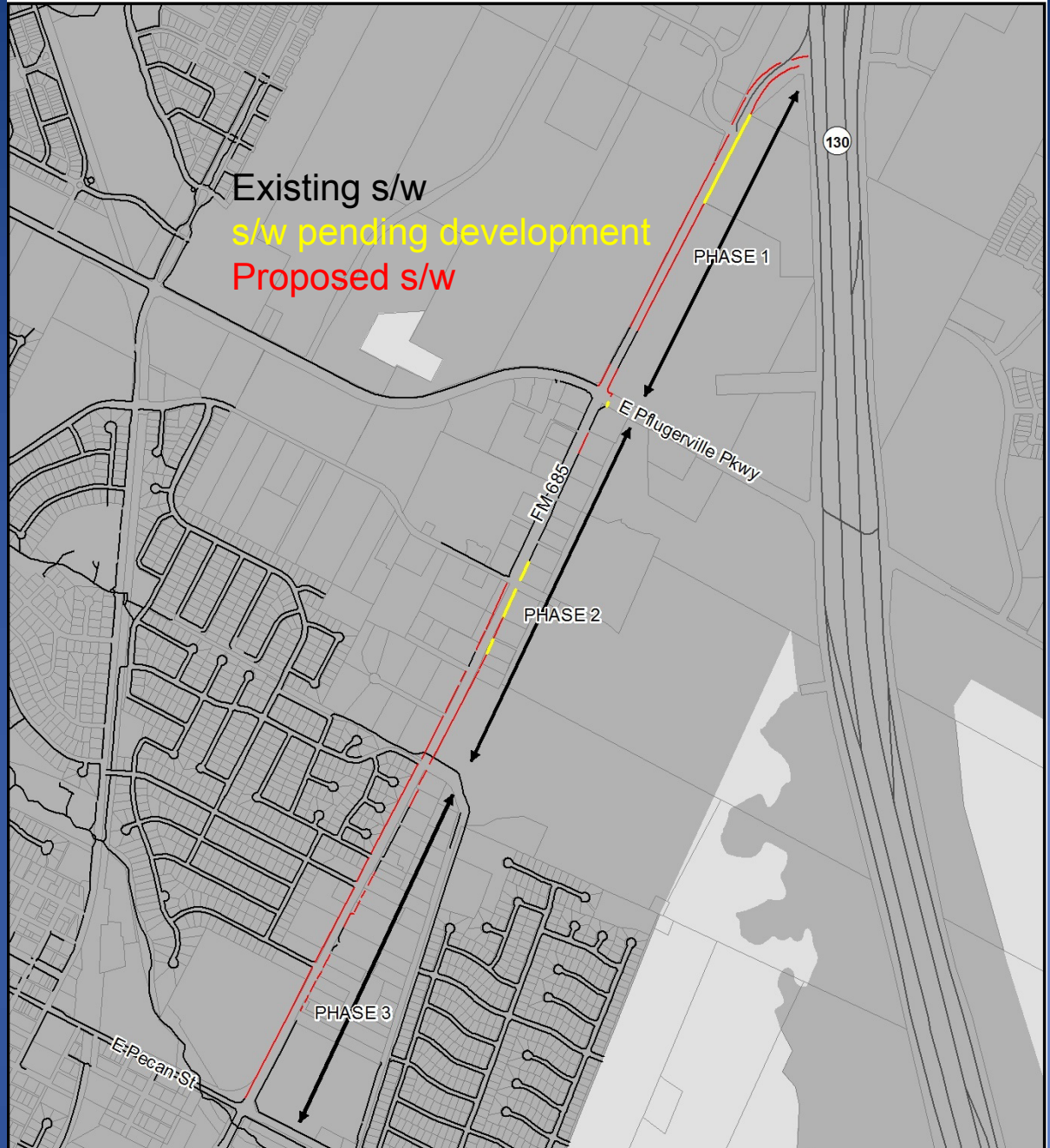
Phase 2: 0.3 mi

\$180,200

Phase 3: 0.7 mi

\$315,000

Total: \$723,200





Dessau Road
0.3 mi
\$120,000





Possible Funding Sources For Sidewalks

- Certificates of Obligation
- Community Development Block Grant (CDBG) funds*
- Grant Funding (Transportation Alternatives Program Funds)
- Existing Sidewalk Escrow Funds (\$231K)
- Property Assessment Liens

* CDBG criteria must be satisfied in order to use such funds