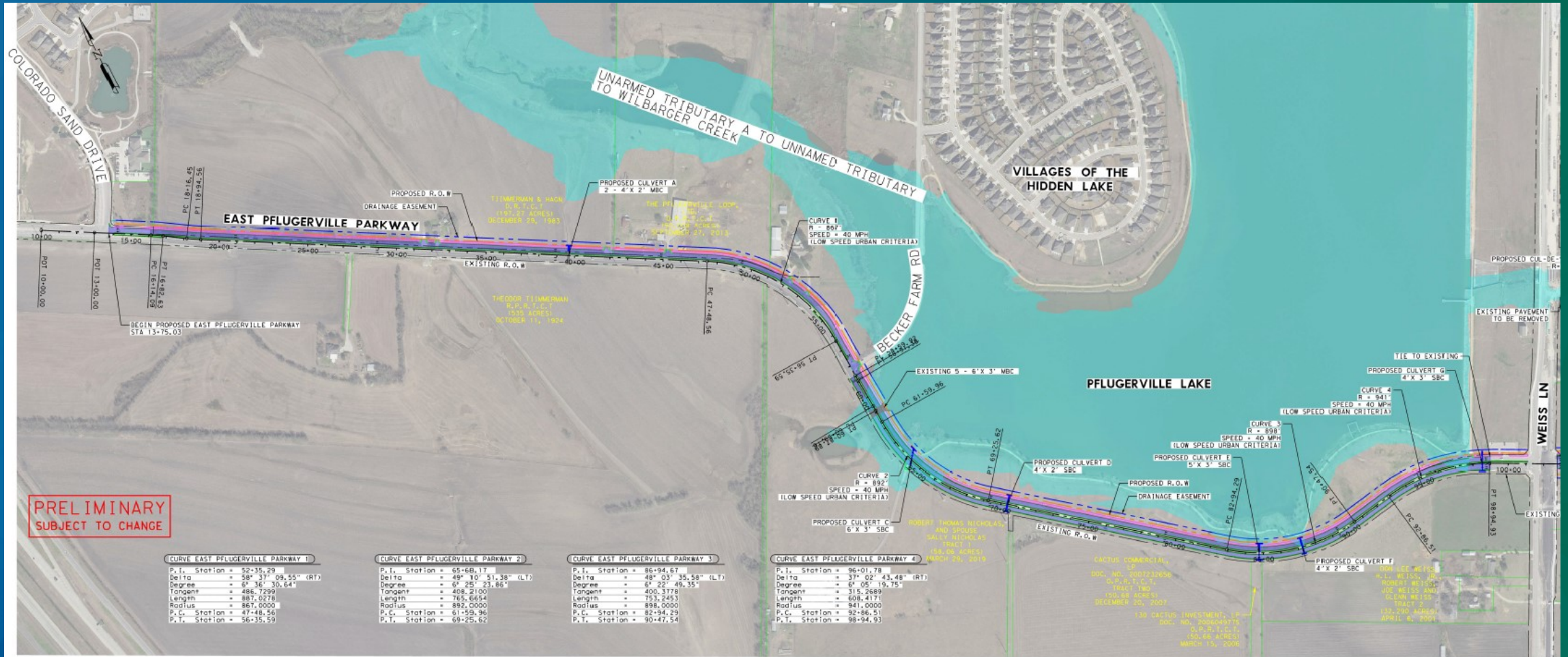


2021-0324

Discuss and consider action to approve a Professional Service Agreement with LJA Engineering, Inc. in the amount of \$799,886.36 for professional services associated with the East Pflugerville Parkway from Colorado Sand Drive to Weiss Lane Roadway project.



# East Pflugerville Parkway Colorado Sand Drive to Weiss Lane



# Project Scope

The scope includes the design of a four-lane divided roadway including:

- Storm Drain System
- Sidewalk and Shared-use Path
- Signs and Pavement Markings
- Continuous Illumination
- Utility Coordination
- ROW Exhibits





# Staff Recommendation

Approve action to approve a Professional Services Agreement with LJA Engineering, Inc. in the amount of \$799,886.36 for professional services associated with the East Pflugerville Parkway from Colorado Sand Drive to Weiss Lane Roadway project.

