

**PROFESSIONAL SERVICES
SUPPLEMENT AGREEMENT #1
For
PACKAGE 1 STREET RECONSTRUCTION**

STATE OF TEXAS §
 §
COUNTY OF TRAVIS §

This Supplemental Service Agreement No. 1 to a contract for Professional Services is made by and between the City of Pflugerville, Texas ("City") and Halff Associates, Inc. ("Consultant"). City and Consultant may be referred to herein singularly as "Party" or collectively as the "Parties."

WHEREAS, the City and Consultant executed an Agreement for Professional Services ("Agreement") on the 26th day of January, 2022 for Package 1 Street Reconstruction ("Project") in the amount of \$ 467,198.76 ; and

WHEREAS, the City and Consultant desire to enter into a Supplemental Service Agreement #1 to Professional Services in the amount of \$ 271,815.93, on the 25th day of October, 2022 to add Street Maintenance for the Willow Creek Subdivision as Package 1B to the Agreement; and

WHEREAS, it has become necessary to amend the Agreement to modify the provisions for the Scope of Services, and Compensation; and

WHEREAS, it is necessary for the City to amend its agreements from time to time to comply with changes in state law relating to contracts of municipalities.

NOW, THEREFORE, premises considered, the City and the Consultant agree that said Agreement is amended as follows:

1.

Article III. Scope of Services and Exhibit A, shall be amended as set forth in the attached addendum to Exhibit A.

Article IV. Compensation to Consultant and Exhibit B (Fee Schedule), shall be amended by increasing by \$ 271,815.93 the amount payable under the Supplemental Agreement for a total of \$ 739,014.69 as set forth in the attached addendum to Exhibit B.

Article XI. Assignment and Contracting, Section 11.2 shall be amended to add the following subcontractor: Contour Collective.

2.

Except as amended hereby, and as previously amended as indicated above, the terms of the Agreement shall remain unchanged and in full force and effect.

EXECUTED and **AGREED** to as of the dates indicated below.

**CITY OF
PFLUGERVILLE**

CONSULTANT

(Signature)

Printed Name: Sereniah Breland

Title: City Manager

Date: _____



(Signature)

Printed Name: Eric Ratzman, PE

Title: Vice President
Half Associates, Inc.

Date: 10/12/22

APPROVED AS TO FORM:



Charles E. Zech
City Attorney
DENTON NAVARRO ROCHA BERNAL & ZECH, P.C.

EXHIBIT "A"
PROPOSED SCOPE OF SERVICES
For
SUPPLEMENT SERVICE #1
PACKAGE 1 STREET RECONSTRUCTION
CITY OF PFLUGERVILLE, TEXAS

Herein is Supplement #1 to the existing Package 1 Street Reconstruction agreement with the City of Pflugerville dated January 26, 2022.

The supplemental delineates the services that Halff Associates, Inc. ("CONSULTANT") will provide to the City of Pflugerville ("CITY"). The project includes pavement rehabilitation for the roadways listed below totaling approximately 12,000 linear feet. Services include survey, geotechnical investigation, pavement design, preliminary engineering analysis, construction documents, bid phase services, and construction phase services. Services will be performed for the following roadways:

Roadway	From	To	Length (LF)
Willow Wood Dr	Meadow Creek Dr	Valley View Dr	1390
Rocky Creek Dr	Willow Wood Dr	Split Oak Dr	1635
Valley View Dr	Cedar Ridge Drive	Cedar Ln	1200
Meadow Creek Drive	Applewood Dr	Elm Dr	355
Elm Dr	Meadow Creek Drive	Twin Creek Dr	330
Twin Creek Dr	Elm Dr	Split Oak Dr	650
Redwood Ln	Timber Bend Dr	Twin Creek Dr	650
Timber Bend Dr	Redwood Ln	Split Oak Dr	285
Cottonwood Ln	Pecan Creek Dr	Rocky Creek Dr	310
Pecan Creek Dr	Cottonwood Ln	Split Oak Dr	690
Pine Creek Dr	Cedar Ln	Split Oak Dr	720
Cedar Ln	Pine Creek Dr	FM 685	1287
Maplewood Dr	Cedar Ln	Split Oak Dr	700
Maplewood Cir	Maplewood Dr	End	275
Hackberry Dr	Cedar Ln	Split Oak Dr	940
Holly Ct	Hackberry Dr	End	235
Jasmine Ct	Hackberry Dr	End	170
Sage Ct	Hackberry Dr	End	175
TOTAL LF			11,997

Consultant will prepare a bid package (referred to as Package 1B) that includes the neighborhood "maintenance" streets listed above along with the following "bond" streets from the original scope:

Roadway	From	To
Applewood Drive	N Railroad	FM 685
Cedar Ridge Drive	Meadow Creek Dr	FM 685
Meadow Creek Drive	Applewood Drive	End
Oak Ridge Drive	Valley View Drive	End

No additional scope or fee is added for the above "bond" streets covered in the original PSA.

The services are separated into the following Tasks and described in more detail below:

Task 10.0: Project Administration and Coordination Services– Package 1B

Task 11.0: Surveying Services– Package 1B

Task 12.0: Geotechnical Engineering Services– Package 1B

Task 13.0: Preliminary Engineering Services– Package 1B

Task 14.0: Design Plans and Construction Documents– Package 1B

Task 15.0: Public Involvement – Package 1B

Task 16.0: Bid Phase Services – Package 1B

Task 17.0: Construction Phase Services – Package 1B

10.0 PROJECT ADMINISTRATION AND COORDINATION SERVICES – PACKAGE 1B

The CONSULTANT will provide the following Project Administration Services:

- 10.1 Submit to the CITY invoices of services completed and compensation due, arranged by tasks. Invoices will include the budgeted and currently authorized amounts for each task (using separate tasks for this supplemental effort from the original bond streets effort), along with the invoiced and to-date amounts. The invoice must be submitted to the CITY by the 10th calendar day of each month;
- 10.2 Submit with each invoice an updated schedule and monthly status report of work performed including any decisions or agreements made, tasks planned for upcoming periods, and any unresolved or pending issues requiring CITY involvement or decision;

The CONSULTANT will provide the following Project Coordination Services:

- 10.3 Attend the following meetings as needed with the City and will prepare and distribute meeting minutes within three (3) business days of the meeting;
 - a. Project kick-off meeting
 - b. Monthly progress meetings
 - c. Comment review meetings after the Preliminary and 90% submittals

TASK 10 Deliverables:

- Monthly progress reports, invoicing, and schedule updates
- Meeting minutes

11.0 SURVEYING SERVICES – PACKAGE 1B

The CONSULTANT will obtain the services of a Registered Professional Land Surveyor to perform field surveys for the Project. All survey services will comply with the latest revision of the Professional Land Surveying Practice Act of the State of Texas and will be accomplished under the direct supervision of a currently licensed State of Texas Registered Professional Land Surveyor. A ROW permit shall be submitted to the City for review and approval prior to consultant or subs engaging in any type of surveying activities.

Surveying Services will include the following:

11.1 Survey

- Mobile LiDAR: Halff will utilize the Mobile LiDAR along the defined street segments.
- Conventional: Halff will blend conventional data as necessary to supplement LiDAR data in obscure areas.

Feature Extraction:

Feature extraction for the above two items will include from Back of Curb to Back of Curb within all the marked preferred routes. Pavement and Utilities that fall within these focus areas will be extracted. This will include call outs with rim elevations and pavement material labels.

Probable expected features to be extracted are as follows:

- a. Utilities- water meters, manholes, misc. valves etc. within previously stated limits.
- b. Pavement-Edge of Road (including pavement types), curb & gutter, crown
- c. Drainage-Drainage features (top of rim for all sanitary and storm manholes within previously stated limits)

TASK 11 Deliverables:

- Survey files will be delivered in MicroStation Geopak. Distances shall be ground distances, not grid distances, all deliverables will be submitted in surface with a provided scale factor, and in grid.
- Topographic Survey will include a DTM with minor contours at 1-foot intervals and major contours at 5-foot intervals and site planimetric along the routes

12.0 GEOTECHNICAL ENGINEERING SERVICES – PACKAGE 1B

See attached scope of services to be performed by Raba Kistner Consultants, Inc. A ROW permit shall be submitted to the City for review and approval prior to subs engaging in any type of geotechnical engineering activities in the field.

13.0 PRELIMINARY ENGINEERING SERVICES – PACKAGE 1B

The CONSULTANT will provide the following Preliminary Engineering Services:

- 13.1 Proposed typical roadway sections showing pavement design
- 13.2 Preliminary traffic control sequencing and phasing
- 13.3 Estimate of probable construction costs of the pavement design alternatives provided by the Geotechnical Engineer (broken out by roadway)
- 13.4 Site visit to evaluate sidewalks, driveways and curb & gutter to determine need for removal and replacement based on sagging/ heaving/ cracking/ ponding. Identify locations where accessible curb ramps need to be added or replaced. Identify areas of visible drainage issues.

TASK 13 Deliverables:

- One (1) draft and one (1) final Technical Memorandum containing:
 - Recommended pavement sections by street
 - Engineer's estimate of probable construction costs
 - Phased construction sequence
 - Curb & gutter, sidewalk, and curb ramp replacements/additions
 - Discussion of anticipated utility conflicts (if any) and general design strategies for mitigating them

14.0 DESIGN PLANS AND CONSTRUCTION DOCUMENTS – PACKAGE 1B

Design Criteria will be as follows:

- The design standards to be used will include but not be limited to the City of Pflugerville Engineering Design Manual, City of Austin Drainage Criteria Manual, TxDOT Roadway Design Manual, Texas Manual on Uniform Traffic Control Devices, and ADA Accessibility Guidelines;
- Project specifications will be developed using the latest City of Pflugerville Technical Standards and Specifications and City of Austin Technical Standards and Specifications and/or the Texas Department of Transportation Standard Specifications as needed;

- 14.1 The CONSULTANT will provide the following for all Roadway design:
- a. Typical sections: showing pavement widths based off existing curb line, centerline, pavement design, cross-slope, lane widths, sidewalk, right-of-way and station limits
 - b. Centerlines and horizontal alignment data
 - c. Limits of construction
 - d. Limits of curb & gutter and driveway removal and replacement needed to achieve positive drainage. In addition to the results from the Preliminary Engineering site visit, the CONSULTANT shall analyze the survey data provided to identify and mitigate any low spots, ponding, bird baths, etc.
 - e. Pavement markings and sign relocations (no separate signage & pavement markings plan)
 - f. Location of proposed ADA curb ramps
 - g. Existing valve covers and manhole lids to be adjusted
- 14.2 The CONSULTANT will provide the following for all Traffic Control design:
- a. Detailed plan sheets, phasing, detours and advance warning sign layout for traffic control during construction, including signing, barricades and temporary paving as needed
 - b. Sequence of Work Narrative including a phase-by-phase, step-by-step written account of the proposed activities throughout the construction process
 - c. Typical Sections for each phase of construction
 - d. All erosion control measures required during construction
- 14.3 In addition to the services above, the Construction Documents will include the following:
- a. Title Sheet with all pertinent project information and index of sheets
 - b. General notes
 - c. Project Layout Sheet(s)
 - d. Miscellaneous Roadway Details as needed
 - e. City of Pflugerville, City of Austin and/or TxDOT standard details as needed
 - f. Special specifications or special provisions, as needed
 - g. Opinion of Probable Construction Cost with tabulated quantities
 - h. Project Manual
- 14.4 The CONSULTANT will coordinate with a Registered Accessibility Specialist (RAS) to review the plans and register the project with the Texas Department of Licensing and Regulation (TDLR). See attached scope of services to be performed by Contour Collective.

TASK 14 Deliverables:

- One bid set/ bid package for all roadways (with quantities and costs separated by bond and maintenance projects)
- 90% Construction Plans (11x17 plan sheets) and OPCC, submitted electronically (with quantities and costs separated by bond and maintenance projects)
- Final Construction Plans (11x17 plan sheets) and OPCC, signed and sealed by a licensed Professional Engineer in the State of Texas
- Responses to 90% CITY review comments
- One Project Manual (including schedule of work, special conditions, and wage rates)
- Electronic bid documentation for advertisement and posting

15.0 PUBLIC INVOLVEMENT – PACKAGE 1B

- 15.1 The CONSULTANT will assist the city in conducting two (2) City of Pflugerville Public meetings by: attending one (1) in-person and preparing presentation for one (1) virtual open house and responding to comments submitted. Public notifications will be handled by the city PIO.
- 15.2 The CONSULTANT will provide up to two (2) color exhibits for use at the Public Meetings

TASK 15 Deliverables:

- Public meeting exhibits
- Public meeting PowerPoint presentation with audio recording of slide narration
- Comment log and responses to comments submitted

16.0 BID PHASE SERVICES – PACKAGE 1B

The CONSULTANT will provide the following Bid Phase Services:

- 16.1 Attend the Pre-Bid Meeting with the CITY and prospective bidders. The CONSULTANT will prepare meeting minutes and submit to the CITY within three (3) business days of the meeting;
- 16.2 Respond to Contractor questions raised during the bidding process and develop addenda to the Bid Documentation as required;
- 16.3 Attend the formal bid opening;
- 16.4 Prepare a bid tabulation, analyze Contractor bids, check references and provide a Recommendation to Award to the apparent lowest responsive responsible bidder within five (5) business days of receiving the bid documents from the CITY; and
- 16.5 Furnish a set of Final Conformed Construction Contract Documents to the awarded Contractor including all Addenda.

TASK 16 Deliverables:

- Bid tabulation for all submitted contractor bids
- Recommendation to Award letter
- Conformed construction documents

17.0 CONSTRUCTION PHASE SERVICES – PACKAGE 1B

The CONSULTANT will provide the following Construction Phase Services:

- 17.1 Attend the following meetings as needed with the CITY and the awarded Contractor and will prepare and distribute meeting minutes within three (3) business days of the meeting;
 - a. Pre-construction meeting
 - b. Monthly progress meetings (6 meetings budgeted)
- 17.2 Review the Contractor's submittals for general conformance with the plans and specifications
- 17.3 Respond to Contractor Requests for Information (RFI) and provide design clarifications and additional information to the City as required
- 17.4 Review monthly pay estimates and recommend approval or other appropriate action
- 17.5 Attend final walk through of the Project to observe any apparent defects in the completed construction with regard to conformance with the design concept and intent of the specifications, and provide a final Punch List
- 17.6 Prepare and compile all closeout documents required by the City's Final Acceptance Process including a set of Record Drawings and concurrence letter of final completion

TASK 17 Deliverables:

- Record drawings
- Engineer's Letter of Concurrence

ITEMS EXCLUDED FROM THE SCOPE OF SERVICES

1. Drainage analysis not specifically stated above (drainage areas, runoff, inlet capacity, etc.)
2. Right-of-Entry
3. Storm Water Pollution Prevention Plan (SWPPP)
4. Right-of-Way verification
5. Design of public and franchised utility relocations
6. Utility coordination
7. Permitting beyond city ROW permit for field work
8. Environmental services
9. Public engagement other than those specified in this proposal
10. Design of water quality or detention ponds
11. Property acquisition or negotiations
12. Preparing property parcels for acquisition
13. Traffic signal analysis or design
14. Landscaping
15. Coordination with individual property owners

Any additional services required beyond those specifically identified in this proposal are excluded from the scope of services to be provided under this agreement. A scope and commensurate fee for any required additional services would be negotiated and provided under a separate supplemental agreement.

EXHIBIT "B"
Level of Effort
City of Pflugerville - Street Reconstruction Projects
Package 1B PSSA
(Time shown in hours, except as noted)

	PROJECT TASK	Project Principal	Project Manager	Civil Engineer III, PE	Civil Engineer I, PE	Civil Engineer, EIT	Geospatial Manager	Senior Survey Tech/ SIT/ Senior Geospatial Tech	Survey Tech/ Geospatial Tech/ GIS Tech/ CADD Drafter	2-Man Terrestrial HDS Crew	MX9 Mobile LiDAR (Lump Sum)	Direct and Subconsultant Expenses	TOTAL
	HOURLY RATES	\$245	\$291	\$199	\$174	\$128	\$210	\$125	\$105	\$300	\$2,000		
Task 10.0:	Project Administration and Coordination Services - Package 1B												
	Project management and coordination		24.0		18.0								\$10,116.00
	Monthly invoicing, reporting and schedule updates		18.0		8.0								\$6,630.00
	Project coordination meetings		6.0		12.0	12.0							\$5,370.00
Task 11.0:	Surveying Services - Package 1B												
	Verify/Establish Control & Targets						1.0			10.0			\$3,210.00
	Collection						1.0			10.0			\$3,210.00
	MX9 Mobile LiDAR										1.0		\$2,000.00
	Registration (LiDAR and Ortho)						1.0		30.0				\$3,360.00
	Extraction						2.5	100.0					\$11,025.00
	QAQC						1.0	20.0					\$2,710.00
Task 12.0:	Geotechnical Engineering Services - Package 1B											\$ 75,990.93	\$75,990.93
Task 13.0:	Preliminary Engineering Services - Package 1B												
	Typical sections and pavement design			8.0	24.0	16.0							\$7,816.00
	Preliminary traffic control phasing		4.0	8.0	12.0	16.0							\$6,892.00
	Preliminary cost estimates		2.0	8.0	16.0	10.0							\$6,238.00
	Site visit			4.0	4.0	4.0							\$2,004.00
Task 14.0:	Supplemental Design Plans and Construction Documents - Package 1B												
	Roadway design		4.0	24.0	80.0	40.0							\$24,980.00
	Traffic Control design		4.0	24.0	60.0	30.0							\$20,220.00
	Plan preparation			10.0	24.0	36.0							\$10,774.00
	Quantities & estimating		1.0	4.0	16.0	8.0							\$4,895.00
	QAQC		8.0	10.0									\$4,318.00
	Project Manual, bid form and specifications		1.0	8.0	12.0								\$3,971.00
	TDLR Registration and Registered Accessibility Consultant (Contour Collective)											\$ 5,825.00	\$5,825.00
Task 15.0:	Public Involvement - Package 1B												
	Prepare exhibits (2 exhibits and PowerPoint)		4.0	8.0	24.0	24.0							\$10,004.00
	Public Meeting facilitation and responses to comments		4.0	12.0	36.0								\$9,816.00
Task 16.0:	Bid Phase Services - Package 1B												
	Pre-bid meeting		2.0		4.0								\$1,278.00
	Answer questions and prepare addenda			1.0	12.0	8.0							\$3,311.00
	Bid opening meeting			1.0	3.0								\$721.00
	Bid tabulation and recommendation letter			1.0	4.0	4.0							\$1,407.00
Task 17.0:	Construction Phase Services - Package 1B												
	Pre-construction meeting		1.0	1.0	3.0								\$1,012.00
	Monthly progress meetings (4)		6.0	6.0	12.0								\$5,028.00
	Submittal reviews			2.0	6.0	16.0							\$3,490.00
	Respond to RFIs		2.0	2.0	8.0	6.0							\$3,140.00
	Site visits (4)			6.0	12.0	6.0							\$4,050.00
	Final walk through & punch list preparation			4.0	8.0								\$2,188.00
	Record drawings			8.0		20.0							\$4,152.00
	Letter of concurrence		1.0	1.0	1.0								\$664.00
TOTAL Hours		0.0	92.0	161.0	419.0	256.0	6.5	20.0	130.0	20.0	1.0	\$ 81,815.93	
TOTAL PROJECT													\$271,815.93
	HOURLY RATES	\$245	\$291	\$199	\$174	\$128	\$210	\$125	\$105	\$300	\$2,000		

Pflugerville Street Reconstruction Design Schedule

ID	Task Name	Duration	Start	Finish	Predecessors	Half 1, 2022							Half 2, 2022							Half 1, 2023							Half 2, 2023							Half 1, 2024						
						J	F	M	A	M	J	J	A	S	O	N	D	J	F	M	A	M	J	J	A	S	O	N	D	J	F	M	A	M	J					
1	NTP Issued- Package 1A	0 days	Wed 1/26/22	Wed 1/26/22		◆ 1/26																																		
2	Data Collection- Package 1A	136 days	Mon 2/14/22	Mon 8/22/22		[Green bar from 2/14/22 to 8/22/22]																																		
3	ROW Permitting	2 wks	Mon 2/14/22	Fri 2/25/22		[Green bar from 2/14/22 to 2/25/22]																																		
4	Surveying Services	6 wks	Mon 2/28/22	Fri 4/8/22	3	[Green bar from 2/28/22 to 4/8/22]																																		
5	Geotechnical Engineering Services	9 wks	Mon 2/28/22	Fri 4/29/22		[Green bar from 2/28/22 to 4/29/22]																																		
6	Subsurface Utility Engineering (add. service)	5 wks	Tue 7/19/22	Mon 8/22/22	15SS+20%	[Green bar from 7/19/22 to 8/22/22]																																		
7	Preliminary Engineering- Package 1A	73.3 days	Fri 4/8/22	Wed 7/20/22		[Green bar from 4/8/22 to 7/20/22]																																		
8	Preliminary Engineering Services	8 wks	Fri 4/8/22	Fri 6/3/22	5SS+66%,4SS+50%	[Green bar from 4/8/22 to 6/3/22]																																		
9	Submit Preliminary Engineering Memorandum	0 days	Fri 6/3/22	Fri 6/3/22	8	◆ 6/3																																		
10	City Review	4 wks	Wed 6/8/22	Tue 7/5/22	9	[Green bar from 6/8/22 to 7/5/22]																																		
11	Update Schedule based on PER findings	0 days	Tue 7/5/22	Tue 7/5/22	10	◆ 7/5																																		
12	Address City Comments	10 days	Wed 7/6/22	Tue 7/19/22	11	[Green bar from 7/6/22 to 7/19/22]																																		
13	Submit Final Preliminary Engineering Memorandum	1 day	Wed 7/20/22	Wed 7/20/22	12	◆ 7/20																																		
14	Design Plans and Construction Documents- Package 1A	91 days	Thu 7/7/22	Thu 11/10/22		[Green bar from 7/7/22 to 11/10/22]																																		
15	90% PS&E Design	8 wks	Thu 7/7/22	Wed 8/31/22	10FS+1 day	[Green bar from 7/7/22 to 8/31/22]																																		
16	90% PS&E QAQC	2 wks	Thu 9/1/22	Wed 9/14/22	15	[Green bar from 9/1/22 to 9/14/22]																																		
17	Submit 90% PS&E	1 day	Thu 9/15/22	Thu 9/15/22	16	◆ 9/15																																		
18	City Review and coordination with TxDOT & County	4 wks	Fri 9/16/22	Thu 10/13/22	17	[Green bar from 9/16/22 to 10/13/22]																																		
19	Update Project Schedule	0 days	Thu 10/13/22	Thu 10/13/22	18	◆ 10/13																																		
20	100 % PS&E Design	2 wks	Fri 10/14/22	Thu 10/27/22	18	[Green bar from 10/14/22 to 10/27/22]																																		
21	100% PS&E QAQC	2 wks	Fri 10/28/22	Thu 11/10/22	20	[Green bar from 10/28/22 to 11/10/22]																																		
22	Submit Final Bid Documents	0 days	Thu 11/10/22	Thu 11/10/22	21	◆ 11/10																																		
23	Public Involvement	62 days	Fri 10/7/22	Tue 1/3/23		[Green bar from 10/7/22 to 1/3/23]																																		
24	Prepare Presentation Materials	2 wks	Fri 10/7/22	Thu 10/20/22	17FS+3 wks	[Green bar from 10/7/22 to 10/20/22]																																		
25	Public Meeting #1	0 days	Thu 10/20/22	Thu 10/20/22	24	◆ 10/20																																		
26	Public Meeting #2	0 days	Tue 1/3/23	Tue 1/3/23	31SS-10 days	◆ 1/3																																		
27	Bidding and Contracting- Package 1A	43 days	Fri 11/11/22	Tue 1/10/23		[Green bar from 11/11/22 to 1/10/23]																																		
28	Advertise Bid	3 wks	Fri 11/11/22	Thu 12/1/22	22	[Green bar from 11/11/22 to 12/1/22]																																		
29	Evaluate/ Tabulate Bid	1 wk	Fri 12/2/22	Thu 12/8/22	28	[Green bar from 12/2/22 to 12/8/22]																																		
30	Contractor Award of Contract	1 day	Tue 1/10/23	Tue 1/10/23		◆ 1/10																																		
31	Construction- Package 1A	8 mons	Tue 1/17/23	Mon 8/28/23	30FS+4 days	[Green bar from 1/17/23 to 8/28/23]																																		
32	NTP Issued- Package 1B	1 day	Tue 10/25/22	Tue 10/25/22		◆ 10/25																																		
33	Data Collection- Package 1B	45 days	Mon 10/31/22	Fri 12/30/22		[Orange bar from 10/31/22 to 12/30/22]																																		
34	ROW Permitting	3 wks	Mon 10/31/22	Fri 11/18/22	32FS+3 days	[Orange bar from 10/31/22 to 11/18/22]																																		
35	Surveying Services	6 wks	Mon 11/21/22	Fri 12/30/22	34	[Orange bar from 11/21/22 to 12/30/22]																																		
36	Geotechnical Engineering Services	6 wks	Mon 11/21/22	Fri 12/30/22	34	[Orange bar from 11/21/22 to 12/30/22]																																		
37	Preliminary Engineering- Package 1B	50 days	Wed 12/21/22	Wed 3/1/23		[Orange bar from 12/21/22 to 3/1/23]																																		
38	Preliminary Engineering Services	6 wks	Wed 12/21/22	Wed 2/1/23	35SS+50%,36SS+7	[Orange bar from 12/21/22 to 2/1/23]																																		
39	Submit Draft Preliminary Engineering Memorandum	0 days	Wed 2/1/23	Wed 2/1/23	38	◆ 2/1																																		
40	City Review	2 wks	Wed 2/1/23	Wed 2/15/23	39	[Orange bar from 2/1/23 to 2/15/23]																																		
41	Address City Comments	2 wks	Wed 2/15/23	Wed 3/1/23	40	[Orange bar from 2/15/23 to 3/1/23]																																		
42	Submit Final Preliminary Engineering Memorandum	0 days	Wed 3/1/23	Wed 3/1/23	41	◆ 3/1																																		
43	Design Plans and Construction Documents- Package 1B	75 days	Wed 3/1/23	Wed 6/14/23		[Orange bar from 3/1/23 to 6/14/23]																																		
44	90% PS&E Design	6 wks	Wed 3/1/23	Wed 4/12/23	42	[Orange bar from 3/1/23 to 4/12/23]																																		
45	90% PS&E QAQC	2 wks	Wed 4/12/23	Wed 4/26/23	44	[Orange bar from 4/12/23 to 4/26/23]																																		
46	Submit 90% PS&E	0 days	Wed 4/26/23	Wed 4/26/23	45	◆ 4/26																																		
47	City Review	3 wks	Wed 4/26/23	Wed 5/17/23	46	[Orange bar from 4/26/23 to 5/17/23]																																		
48	100 % PS&E Design	3 wks	Wed 5/17/23	Wed 6/7/23	47	[Orange bar from 5/17/23 to 6/7/23]																																		
49	100% PS&E QAQC	1 wk	Wed 6/7/23	Wed 6/14/23	48	[Orange bar from 6/7/23 to 6/14/23]																																		
50	Submit Final Bid Documents	0 days	Wed 6/14/23	Wed 6/14/23	49	◆ 6/14																																		
51	Bidding and Contracting- Package 1B	35 days	Wed 6/14/23	Wed 8/2/23		[Orange bar from 6/14/23 to 8/2/23]																																		
52	Advertise Bid	3 wks	Wed 6/14/23	Wed 7/5/23	50	[Orange bar from 6/14/23 to 7/5/23]																																		
53	Evaluate/ Tabulate Bid	1 wk	Wed 7/5/23	Wed 7/12/23	52	[Orange bar from 7/5/23 to 7/12/23]																																		
54	Contractor Award of Contract	3 wks	Wed 7/12/23	Wed 8/2/23	53	[Orange bar from 7/12/23 to 8/2/23]																																		
55	Construction- Package 1B	6 mons	Wed 8/2/23	Wed 1/17/24	54	[Orange bar from 8/2/23 to 1/17/24]																																		

**RABA KISTNER CONSULTANTS, INC. SCOPE OF SERVICES
PFLUGERVILLE STREET RECONSTRUCTION PACKAGE IB
TRAVIS COUNTY, TEXAS**

PROJECT DESCRIPTION

Under consideration in this study is the rehabilitation of selected streets identified as Package IB per discussions with Halff.

In 2019, the City of Pflugerville conducted a street condition survey of various streets within the city limits. An overall condition index (OCI) number was assigned to the streets with various condition types ranging from failed to good. This information will be utilized as a basis in understanding the current condition of the roadways being considered in Package IB.

The street names being considered in Package IB are identified in the table below. Additional information related to roadway length and assigned OCI has been summarized.

Street Name	Extents	Approximate Lineal Feet of Roadway	Overall Condition Index	Condition Description Performance
Willow Wood Lane	Meadow Creek Drive to Valley View Drive	1,390	46 to 69	Poor to Fair
Rocky Creek Drive	Willow Wood Drive to Split Oak Drive	1,635	--	Fair
Valley View Drive	Cedar Ridge Drive to Cedar Lane	1,200	65 to 88	Fair to Good
Meadow Creek Drive	Applewood Drive to Elm Drive	355	45	Poor
Elm Drive	Meadow Creek Drive to Twin Creek Drive	330	51	Poor
Twin Creek Drive	Elm Drive to Split Oak Drive	650	47 to 69	Poor to Fair
Redwood Lane	Timber Bend Drive to Twin Creek Drive	650	65	Fair
Timber Bend Drive	Redwood Lane to Split Oak Drive	285	57 to 82	Fair to Satisfactory
Cottonwood Lane	Pecan Creek Drive to Rocky Creek Drive	310	70	Fair
Pecan Creek Drive	Cottonwood Lane to Split Oak Drive	690	73	Satisfactory
Pine Creek Drive	Cedar Lane to Split Oak Drive	720	67	Fair
Cedar Lane	Pine Creek Drive to FM 685	1,287	61 to 71	Fair to Satisfactory
Maplewood Drive	Cedar Lane to Split Oak Drive	700	63 to 67	Fair
Maplewood Circle	Maplewood Drive to End	275	62	Fair
Hackberry Drive	Cedar Lane to Split Oak Drive	940	58 to 68	Fair
Holly Court	Hackberry Drive to End	235	66	Fair
Jasmine Court	Hackberry Drive to End	170	64	Fair
Sage Court	Hackberry Drive to End	175	68	Fair

**RABA KISTNER CONSULTANTS, INC. SCOPE OF SERVICES
PFLUGERVILLE STREET RECONSTRUCTION PACKAGE IB
TRAVIS COUNTY, TEXAS**

PROPOSED SCOPE OF WORK

Our scope of services will be to determine subsurface soil conditions at the site and develop flexible pavement design recommendations and construction guidelines for all streets identified as Package IB above. The design 18-kip Equivalent Single Axle Loads (ESALs) will be determined by either street classification, anticipated average daily traffic (ADT) counts for a 20-year design life for flexible pavements in general accordance with the City of Pflugerville *Engineering Design Manual & Construction Standards*, and/or estimated traffic as provided by the City of Pflugerville.

FIELD SERVICES

As part of our scope of work, RKCI will perform the following:

- Develop soil-boring layout for the City of Pflugerville’s approval prior to mobilization.
- Submit a Right-of-Way Application permit for all streets associated with Package IB, which is required for drilling and cut excavations within the street right-of-way. The document will include a cover letter describing the nature of our work, the number of borings and their targeted depths, proposed boring locations vetted against existing utilities (offsets), a traffic and/or pedestrian control plan in conformance with the latest TMUTCD, and a restoration plan (backfill requirements for the boreholes) in accordance with Chapter 96.51 and 96.52. A copy of our Texas 811 utility locate submission will also be included. We understand not all utilities subscribe to Texas 811; therefore, water line utilities will have their own utility locate submission for final clearance.
- The boring locations will be located in the field utilizing tape and right angle measurements from existing benchmarks or using a recreational grade Global Positioning System (GPS) device. Our scope of services does not include surveying of the boring locations.
- Subsurface soil conditions will be explored by drilling 31 borings to depths of 10 ft below the existing ground surface utilizing a truck mounted drilling rig. The following drilling scope is proposed:

Street Name	Approximate Lineal Feet of Roadway	Proposed Number of Borings
Willow Wood Lane	1,390	3
Rocky Creek Drive	1,635	3
Valley View Drive	1,200	3
Meadow Creek Drive	355	1
Elm Drive	330	1
Twin Creek Drive	650	2
Redwood Lane	650	2
Timber Bend Drive	285	1
Cottonwood Lane	310	1

**RABA KISTNER CONSULTANTS, INC. SCOPE OF SERVICES
PFLUGERVILLE STREET RECONSTRUCTION PACKAGE IB
TRAVIS COUNTY, TEXAS**

Street Name	Approximate Lineal Feet of Roadway	Proposed Number of Borings
Pecan Creek Drive	690	1
Pine Creek Drive	720	2
Cedar Lane	1,287	3
Maplewood Drive	700	2
Maplewood Circle	275	1
Hackberry Drive	940	2
Holly Court	235	1
Jasmine Court	170	1
Sage Court	175	1
TOTAL		31

Samples will be taken on 2 ft intervals. The above fieldwork will be supervised by an graduate engineer or geologist familiar with local geology and TxDOT standards for drilling and sampling. We have assumed that the borings can be drilled during the day, right of entry is provided, and that all boring locations will be accessible to a truck-mounted drill rig.

- Perform dynamic cone penetrometer (DCP) testing at selected boring locations to evaluate subgrade stiffness.

NON-DESTRUCTIVE TESTING (Falling Weight Deflectometer Testing)

Falling Weight Deflectometer (FWD) testing will be performed on all streets within Package IB. The purpose is to determine the in-place layer moduli using back calculation techniques. This will determine the most appropriate options for rehabilitating the roadway and pinpoint the location of weak layers that warrant addressing. In order to perform the most accurate back calculations, the data must be correlated with asphalt pavement thickness information collected from drilled pavement core data.

LABORATORY TESTING

Upon completion of the subsurface exploration, a testing program will be designed to define the strength and classification characteristics of soils. The testing program may include but not limited to moisture content tests, Atterberg Limits (plasticity tests), sulfate testing, particle size analysis tests, and lime series. The type and number of tests will be based on subsurface conditions encountered in the field.

GEOTECHNICAL ENGINEERING REPORT DELIVERABLE

The results of our FWD data collection will be utilized to determine the moduli of the existing asphalt pavement section and underlying subgrade. This information will then be utilized to provide new pavement design recommendations.

**RABA KISTNER CONSULTANTS, INC. SCOPE OF SERVICES
PFLUGERVILLE STREET RECONSTRUCTION PACKAGE IB
TRAVIS COUNTY, TEXAS**

The geotechnical engineering report will include the following information and recommendations, if applicable:

- Geotechnical Investigation prepared by a professional geotechnical engineer with 15+ years of experience conducting roadway projects within Travis County.
- The following items will be included in the geotechnical report: soil-boring locations, boring logs, plan of borings, subsurface exploration procedures, field and laboratory test results, description of surface and subsurface conditions, groundwater conditions, and estimated PVR calculations.
- Prepare up to 3 pavement design options for all streets within Package IB. All pavement design analyses will be performed with TxDOT software FPS-21.
- A Draft Pavement Report will be submitted for all streets within Package IB for design team comments and review. Comments will be incorporated in the final deliverable that will be reproduced in one electronic copy for distribution.

TENTATIVE PROJECT SCHEDULE

Based on our present workload, we anticipate that we could begin the field coordination phase immediately upon authorization. The permit process is estimated to take up to two weeks for City of Pflugerville approval. The field exploration (includes permitting, drilling and FWD Testing) and laboratory-testing phase of the study is generally expected to take approximately 15 to 20 working days to complete. Engineering analyses and preparation of the engineering report is expected to take an additional three to four weeks to complete. We will be pleased to provide the design team with verbal design information as the data becomes available.

FEE ESTIMATE:

The total fee for the task discussed above is not to exceed **\$75,990.93**.

Upon full execution of this Work Order, Raba Kistner Consultants, Inc. shall commence performance of the services defined herein in accordance with the terms as outlined in the contract between Raba Kistner Consultants, Inc. and Halff Associates, Inc. Work Order.

**PFLUGERVILLE STREET RECONSTRUCTION PACKAGE IB
TRAVIS COUNTY, TEXAS**

TASK	Hourly Rate:	PRINCIPAL	PROJECT MANAGER	SENIOR ENGINEER	PROJECT ENGINEER	EIT	FIELD COODINATOR	SENIOR LABORATORY TECHNICIAN	CAD TECH/LOGGER	ADMIN	Sub Total	Hr/Unit	RKCI Labor Cost
		\$220.00	\$195.00	\$185.00	\$165.00	\$135.00	\$105.00	\$75.00	\$75.00	\$65.00			
Hours											Hours		Cost
ENGINEERING/LABOR													
GEOTECHNICAL INVESTIGATION AND PAVEMENT DESIGN RECOMMENDATIONS													
PROJECT KICK OFF			1		1					0.5	3		\$ -
BORING LAYOUT, DRILLING INSTRUCTION, PERMITTING			2				8				10		\$ 1,230.00
STAKE BORINGS							14				14		\$ 1,470.00
UTILITIES CLEARANCE							6				6		\$ 630.00
FIELD LOGGING WITH DCP									40		40		\$ 3,000.00
LABORATORY ASSIGNMENT						4					4		\$ 540.00
SOIL BORING LOGS				1	10			4			15		\$ 1,815.00
SITE PLAN				1	2				6		9		\$ 885.00
PAVEMENT DESIGN ANALYSIS			3	6	8						17		\$ 2,655.00
DRAFT GEOTECHNICAL REPORT PREPARATION			2	6	18					3	29		\$ 4,005.00
GEOTECHNICAL REPORT REVIEW & FINALIZATION			1	2	3					2	8		\$ 1,060.00
													\$ -
DESIGN MEETINGS			2								2		\$ 390.00
													\$ -
TOTAL HOURS:			11		17.0	45	28	4	46	5.5	Row Total = 157		
											Column Total = 157		
LABOR COST:		\$ -	\$ 2,145	\$ -	\$ 2,805	\$ 6,075	\$ 2,940	\$ 300	\$ 3,450	\$ 358			\$ 18,072.50
			7.0%		10.9%	28.8%	17.9%	2.6%	29.4%	3.5%			\$ 18,072.50
UNIT EXPENSES													
31 Borings to 10 ft with DCP Testing	FIELD OPERATIONS												
	Mobilization of Drill Rig			1	units						\$495.00 each		\$495.00
	3" Thin-Wall Continuous Sampling or Intermittent Sampling in Granular Soils			186	ft						\$19.50 ft		\$3,627.00
	Rock Augering			124	ft						\$23.00 ft		\$2,852.00
	In-Place Pavement Core (6-in. diameter)			31	units						\$100.00 each		\$3,100.00
	Bentonite Backfill			15	bags						\$13.86 bag		\$207.90
	Pavement Surface Patch			31	units						\$40.00 each		\$1,240.00
	Driller Cleanup			12	hrs						\$233.54 hr		\$2,802.48
	LABORATORY TESTING												
	Atterberg Limits			21	units						\$105.00 each		\$2,205.00
	Moisture Content			93	units						\$15.00 each		\$1,395.00
	Sieve Analysis (passing No. 40 & 200)			15	units						\$58.00 each		\$870.00
	Sulfate Testing			15	units						\$100.27 each		\$1,504.05
	pH Lime Series (Tex-121-E Part III)			2	units						\$410.00 each		\$820.00
TOTAL UNIT EXPENSES:													\$ 21,118.43
OTHER DIRECT EXPENSES:													
	Major Roads (Traffic Control Services, Arrow Boards and Attenuator Truck)				days						\$2,800.00 day		
	Minor Roads (Moving Single-Lane Closure and Flagging)			8	days						\$1,000.00 day		\$8,000.00
	FWD Testing			3	days						\$9,600.00 day		\$28,800.00
TOTAL OTHER DIRECT EXPENSES:													\$ 36,800
TOTAL PROJECT COST:													\$ 75,990.93

August 26, 2022

PROPOSAL PREPARED BY:

Contour Collective
Elaine Andersen, RAS 1284
PO Box 143214
Austin, TX 78714-3214

CLIENT:

Halff
c/o Nicole Debevoise
Austin, TX

PROJECT:

City of Pflugerville Street Reconstruction – 1B
Pflugerville, TX

PROJECT SCOPE:

- Pavement rehabilitation project
- Approx. 7 miles
- Involves the removal and replacement of all non-compliant curb ramps
- See attached map outlining scope of work

CODES UNDER REVIEW:

Compliance with Chapter 469 of the Texas Government Code, State of Texas Architectural Barriers Act via the 2012 Texas Accessibility Standards, with current technical memorandums, and administrative rulings.

EXCLUSIONS: The proposal excludes services to determine compliance with other federal, state or local accessibility requirements and accessibility requirements of building and housing codes such as the International Building Code (IBC) and the Americans with Disabilities Act (ADA).

SERVICES PROVIDED; SCHEDULE & DELIVERABLES:**TDLR REGISTRATION**

Contour Collective will register the project with TDLR within two working days of receiving the documents noted below. A proof of registration will be provided to the client.

- completed Project Registration Form submitted to Contour by client
- completed and signed Proof of Submission Form provided by the Lead Designer for the project
- *Optional* Owner Agent Form, if the owner designates someone to be their agent for the project.

**PLAN REVIEW & REPORT**

Contour will perform a plan review of the design drawings provided by the client as a pdf. A detailed report of findings will be provided to the owner and client within ten working days after receiving all required documents. No formal response to this report is required.



INSPECTION & REPORT

Within 30 days of project completion, the final inspection must be requested by the owner or designated agent. Contour will schedule the inspection within ten working days of receiving the written request and will issue a detailed report of findings within five working days of performing the inspection. *If the inspections desire to be broken up into phases, hours from the Technical Assistance will be used for extra trip and admin time and the Inspection fee divided accordingly.*



CLOSE-OUT

Contour will close the project with TDLR. If violations were present, a letter of corrective modifications will be provided to the owner and client after receiving required documentation post inspection.

PROPOSED CONSULTING FEES:

This proposal is valid for six months. Once executed, fees are valid for one years, after which may be negotiated.

- TAS Plan Review Report & associated filing with TDLR \$1,050.00
- TAS Inspection Report & associated filing with TDLR, including project close-out \$3,400.00
- Additional Technical Assistance as needed (not to exceed 8 hours at \$150/hour) \$1,200.00

PROPOSED REIMBURSABLE FEES:

- Project Registration fee \$175.00
paid by Contour to TDLR @ project registration

TOTAL \$5,825.00

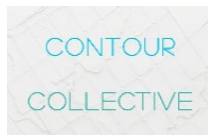
The total proposed consulting and reimbursable fees under this agreement is five thousand eight hundred twenty-five dollars and zero cents (**\$5,825.00**). The inspection fee includes travel for the inspection. The fees listed above are limited to services outlined in this proposal. Additional services are available at an hourly rate of \$150.00/hour.

Client agrees that Contour Collective, LLC’s limit of liability for any claim against it for services performed under this contract shall be limited to the total of consulting fees paid to Contour Collective pursuant to this agreement.

To initiate services, please provide: a signed agreement, completed TDLR forms, a pdf drawing set, and a check for the Project Registration and Plan Review fees of \$1,225 made out to Contour Collective.

CONTOUR COLLECTIVE

c. 512.415.6000
PO Box 143214
Austin, TX 78714-3214



CLIENT: Half
Austin, TX



Signature: *Elaine Andersen*

Print Name: Elaine Andersen, Co-Founder

Date: August 26, 2022

Signature: _____

Print Name: _____

Date: _____

	Roadway	From	To	(LF)	
1	Willow Wood Dr	Meadow Creek Dr	Valley View Dr	1390	Package 1B- 2023 Pf Street Maintenance
2	Rocky Creek Dr	Willow Wood Dr	Split Oak Dr	1635	Package 1B- 2023 Pf Street Maintenance
3	Valley View Dr	Cedar Ridge Drive	Cedar Ln	1200	Package 1B- 2023 Pf Street Maintenance
4	Meadow Creek Drive	Applewood Dr	Elm Dr	355	Package 1B- 2023 Pf Street Maintenance
5	Elm Dr	Meadow Creek Drive	Twin Creek Dr	330	Package 1B- 2023 Pf Street Maintenance
6	Twin Creek Dr	Elm Dr	Split Oak Dr	650	Package 1B- 2023 Pf Street Maintenance
7	Redwood Ln	Timber Bend Dr	Twin Creek Dr	650	Package 1B- 2023 Pf Street Maintenance
8	Timber Bend Dr	Redwood Ln	Split Oak Dr	285	Package 1B- 2023 Pf Street Maintenance
9	Cottonwood Ln	Pecan Creek Dr	Rocky Creek Dr	310	Package 1B- 2023 Pf Street Maintenance
10	Pecan Creek Dr	Cottonwood Ln	Split Oak Dr	690	Package 1B- 2023 Pf Street Maintenance
11	Pine Creek Dr	Cedar Ln	Split Oak Dr	720	Package 1B- 2023 Pf Street Maintenance
12	Cedar Ln	Pine Creek Dr	FM 685	1287	Package 1B- 2023 Pf Street Maintenance
13	Maplewood Dr	Cedar Ln	Split Oak Dr	700	Package 1B- 2023 Pf Street Maintenance
14	Maplewood Cir	Maplewood Dr	End	275	Package 1B- 2023 Pf Street Maintenance
15	Hackberry Dr	Cedar Ln	Split Oak Dr	940	Package 1B- 2023 Pf Street Maintenance
16	Holly Ct	Hackberry Dr	End	235	Package 1B- 2023 Pf Street Maintenance
17	Jasmine Ct	Hackberry Dr	End	170	Package 1B- 2023 Pf Street Maintenance
18	Sage Ct	Hackberry Dr	End	175	Package 1B- 2023 Pf Street Maintenance
19	Applewood Drive	N Railroad Ave	FM 685	2800	Package 1B- 2020 Transportation Bond
20	Oak Ridge Drive	Valley View Dr	End	1860	Package 1B- 2020 Transportation Bond
21	Cedar Ridge Drive	Meadow Creek Dr	FM 685	1625	Package 1B- 2020 Transportation Bond
22	Meadow Creek Drive	Applewood Dr	End	1990	Package 1B- 2020 Transportation Bond
23	10th Street	Wells Branch Pkwy	W Pecan St	5700	Package 1A- 2020 Transportation Bond
24	Mountain View Drive	Mountain View Cove	End	4335	Package 1A- 2020 Transportation Bond
25	W. Custers Creek Bend	Oxford Dr	End	2140	Package 1A- 2020 Transportation Bond
26	Kay Lane	FM 685	End	830	Package 1A- 2020 Transportation Bond
27	Plumbago Drive	E Pecan St	End	3230	Package 1A- 2020 Transportation Bond