



# **COMMUNITY DEVELOPMENT BLOCK GRANT (CDBG) PROGRAM**

## **Consolidated Annual Performance and Evaluation Report Program Year 2014 (October 2014 – September 2015)**

Draft Release: November 23, 2015  
Comment Period: November 23– December 8  
Public Hearing: December 8, 2015  
Adopted: TBD

City of Pflugerville  
Development Services Center  
201-B East Pecan St., Pflugerville, Texas 78691  
512.990.6300 [www.pflugervilletx.gov/cdbg](http://www.pflugervilletx.gov/cdbg)

## **CR-05 - Goals and Outcomes**

### **Progress the jurisdiction has made in carrying out its strategic plan and its action plan. 91.520(a)**

The City of Pflugerville is a fast growing suburban community that is home to over 54,000 residents. Pflugerville traditionally has been a suburban bedroom community, but as of today it is quickly becoming a full service city; providing not only places to live but to work, shop and play.

The City's overall development goal is to support the key focuses outlined in the Consolidated and Annual Action Plan. In 2014, Pflugerville supported efforts to expand choices and opportunities for residents to enjoy affordable recreation activities from improvements at city parks as well as youth scholarships for city recreation programs, and improvements to infrastructure through expansion of our sidewalk system.

Overall, the City of Pflugerville has demonstrated measurable progress in efforts to launch projects outlined in the PY2014 Annual Action Plan. In some cases, primary projects were dropped due to changes in demographics and therefore alternate projects needed to be pursued in order to fulfill the needs of the community. Those efforts are underway in the PY2015 Action Plan.

The City is confident the listed projects for the 2014 Annual Action Plan will meet or exceed all objectives and the City continue to pursue alternate projects meeting the goals of infrastructure, public service and parks programming as outlined in the Consolidated Plan. The City completed two of the four projects outlined in the PY2014 Action Plan. The two projects completed for youth recreation scholarships and playground and accessibility improvements at Windermere Park. The project completed focused on the efforts to provide for public service as well as improvements to public facilities. The two projects that were not completed were infrastructure projects that would install sidewalks along two roadways within our community, Edgemere and Heatherwilde Boulevard. The sidewalks for Heatherwilde Boulevard were removed as a project because that area could no longer met the requirements established by HUD for serving a low to moderate income population. Once the Heatherwilde Boulevard sidewalk project was no longer viable, the City opted to place the Edgemere sidewalk project on hold in an effort to consolidate projects and utilize funding more efficiently. The Edgemere sidewalks are anticipated to be constructed in PY2015 in conjunction with other similar projects.

### **Comparison of the proposed versus actual outcomes for each outcome measure submitted with the consolidated plan and explain, if applicable, why progress was not made toward meeting goals and objectives. 91.520(g)**

Categories, priority levels, funding sources and amounts, outcomes/objectives, goal outcome indicators, units of measure, targets, actual outcomes/outputs, and percentage completed for each of the grantee's program year goals.

| Goal                            | Category                    | Source / Amount | Indicator                               | Unit of Measure  | Expected – Strategic Plan | Actual – Strategic Plan | Percent Complete | Expected – Program Year | Actual – Program Year | Percent Complete |
|---------------------------------|-----------------------------|-----------------|---|------------------|---------------------------|-------------------------|------------------|-------------------------|-----------------------|------------------|
| Infrastructure                  | Suitable Living Environment | CDBG: \$120,000 | Sidewalk and Ramp Improvements          | Persons Assisted | 0                         | 0                       | 0.00%            | 2014                    | 2015                  | 0.00%            |
| Community Service               | Affordability               | CDBG: \$30,000  | Funding for youth recreational programs | Persons Assisted | 150                       | 30                      | 100.00%          | 2014                    | 2014                  | 100.00%          |
| Public Buildings and Facilities | Suitable Living Environment | CDBG: \$80,000  | Improve Park Facilities                 | Persons Assisted | 5070                      | 4025                    | 100.00%          | 2014                    | 2014                  | 100.00%          |

**Table 1 - Accomplishments – Program Year & Strategic Plan to Date**

**Assess how the jurisdiction’s use of funds, particularly CDBG, addresses the priorities and specific objectives identified in the plan, giving special attention to the highest priority activities identified.**

In the 2014-15 program year, thirty-four (34) children of low to moderate income backgrounds were approved for youth recreation scholarships to aid participation in eligible recreation programs. Thirty (30) of the approved children utilized the scholarship. The youth scholarship program was available for a variety of recreation programs however programs such as the Pflugerville Summer Pfun Camp, and dance classes were the most popular programs utilized by residents. The total cost for the program was \$4,786.00.

The rehabilitation of the Windermere playground was successfully completed in Fall of 2015. CDBG Funds were used to replace an existing playground structure within Windermere Park. The park now has a new swing set, play-scape, accessible route to the playground, and a safer playground border. The total cost for the project was \$67,210.19.

Due to changes in demographics, the City’s listed primary infrastructure projects were no completed within PY2014.

**Windermere Park – BEFORE CDBG Improvements:**





**Windermere Park – AFTER CDBG Improvements**



## CR-10 - Racial and Ethnic composition of families assisted

Describe the families assisted (including the racial and ethnic status of families assisted).

91.520(a)

|  | CDBG        |
|--|-------------|
| White  | 2576        |
| Black or African American  | 1086        |
| Asian  | 322         |
| American Indian or American Native or Native Hawaiian or Other Pacific Islander or Other | 41          |
| Unknown  | 8           |
| <b>Total</b>   | <b>4055</b> |
| Hispanic   | 35%         |
| Not Hispanic   | 65%         |

Table 2 – Table of assistance to racial and ethnic populations by source of funds

### Narrative

Originally proposed to begin construction in the Spring of 2014, the Windermere Park improvements would serve the greater Windermere neighborhood area. This proposed area initially served an estimated 17,245 total residents of which thirty-four (34) percent were of low to moderate income. Upon execution of the project HUD released revised low to moderate income numbers and new boundary files to coincide with the U.S. Census 2010 boundary revision. Consequently, the project boundaries and numbers changed as well, with the total residents being served to an estimated 8,405 but the percent of low to moderate income growing to forty-eight (48) percent.

## CR-15 - Resources and Investments 91.520(a)

Identify the resources made available

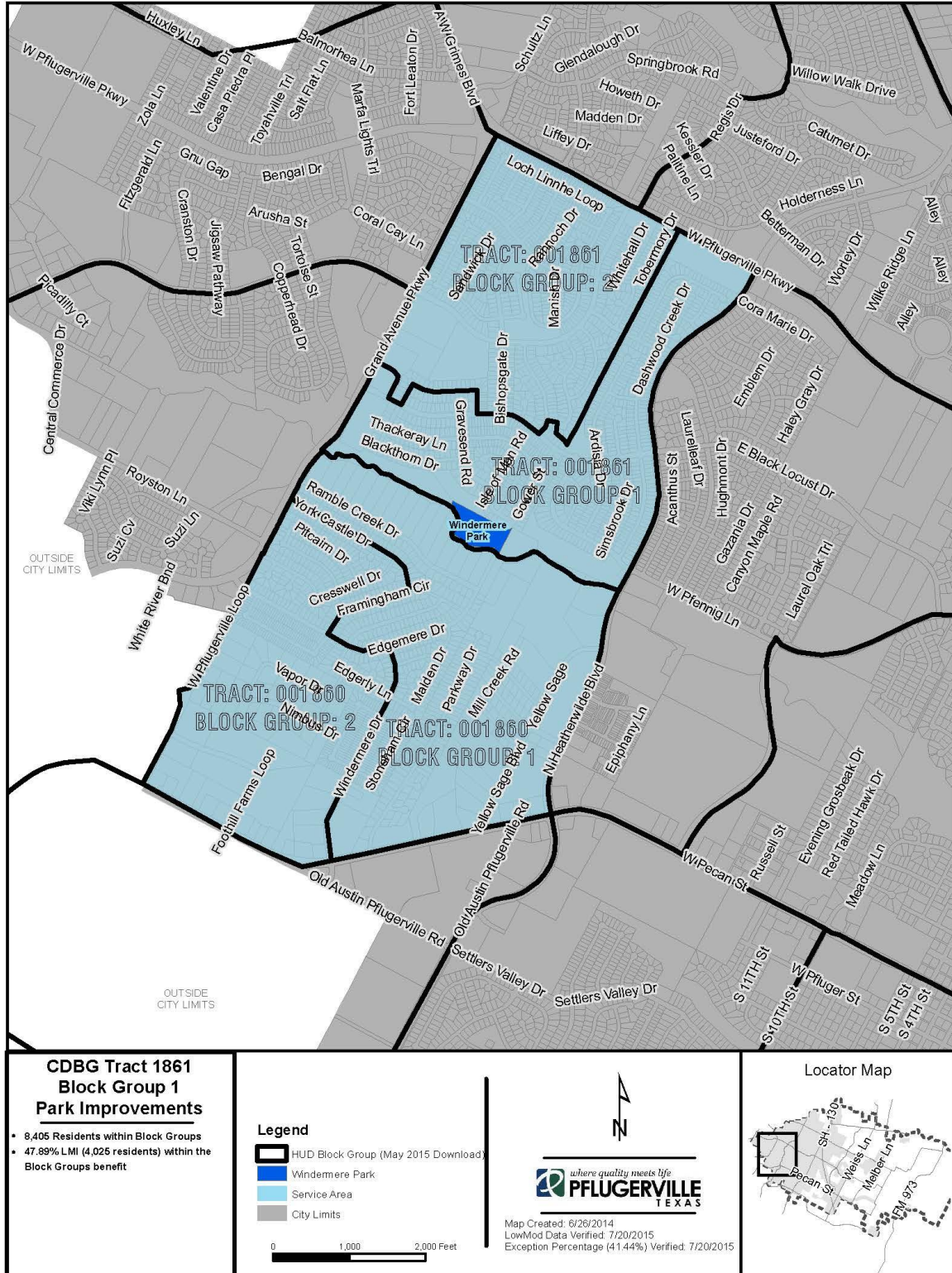
| Source of Funds | Source | Resources Made Available | Amount Expended During Program Year |
|-----------------|--------|--------------------------|-------------------------------------|
| CDBG            | n/a    | \$232,501                | \$67,210.19+scholarships            |

Table 3 – Resources Made Available

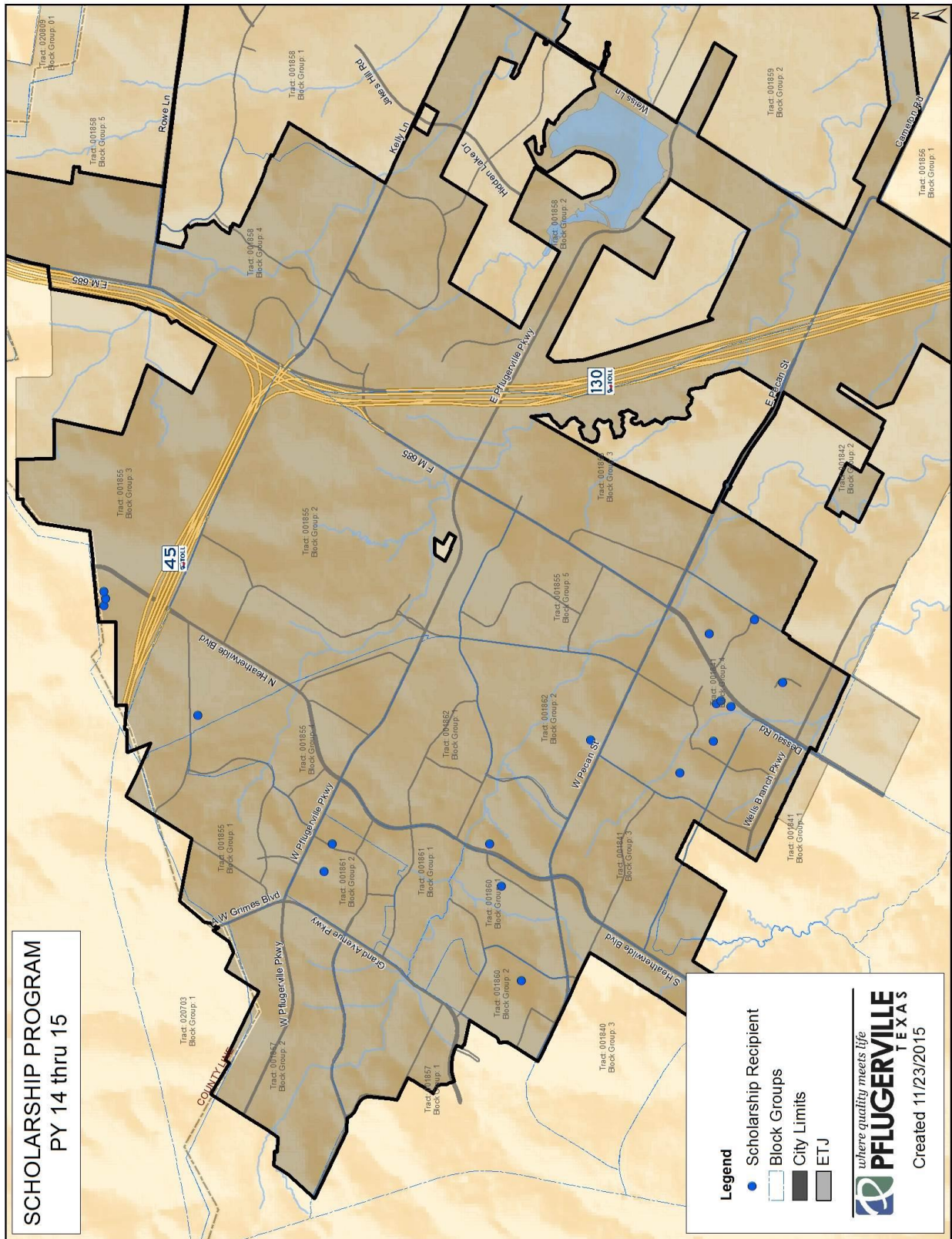
Narrative



## Identify the geographic distribution and location of investments –







**Narrative**

Originally proposed to cover Tracts 1836 Block Groups 1, 2, 3 & 4 upon revision of the LMI percentage and subsequent boundaries the new boundaries encompass Tract 1860 Block Groups 1 & 2 and Tract 1861 Block Groups 1 & 2.

## **Leveraging**

**Explain how federal funds leveraged additional resources (private, state and local funds), including a description of how matching requirements were satisfied, as well as how any publicly owned land or property located within the jurisdiction that were used to address the needs identified in the plan.**

The City of Pflugerville did not utilize any additional funds towards projects outlined within the CDBG program. Staff resources to run the program were funded through the City's general fund.

## CR-20 - Affordable Housing 91.520(b)

Evaluation of the jurisdiction's progress in providing affordable housing, including the number and types of families served, the number of extremely low-income, low-income, moderate-income, and middle-income persons served.

|  | One-Year Goal | Actual |
|--|---------------|--------|
| Number of homeless households to be provided affordable housing units      | 0             | 0      |
| Number of non-homeless households to be provided affordable housing units  | 0             | 0      |
| Number of special-needs households to be provided affordable housing units | 0             | 0      |
| <b>Total</b>   |               |        |

Table 4- Number of Households

|  | One-Year Goal | Actual |
|--|---------------|--------|
| Number of households supported through rental assistance                 | 0             | 0      |
| Number of households supported through the production of new units       | 0             | 0      |
| Number of households supported through the rehab of existing units       | 0             | 0      |
| Number of households supported through the acquisition of existing units | 0             | 0      |
| <b>Total</b>   |               |        |

Table 5 - Number of Households Supported

**Discuss the difference between goals and outcomes and problems encountered in meeting these goals.**

For the five year period covered by the Consolidated Plan, Pflugerville does not intend to target CDBG funds toward efforts to aid in housing needs.

**Discuss how these outcomes will impact future annual action plans.**

For the five year period covered by the Consolidated Plan, Pflugerville does not intend to target CDBG funds toward efforts to aid in housing needs therefore no projects are anticipated in future action plans.

**Include the number of extremely low-income, low-income, and moderate-income persons served by each activity where information on income by family size is required to determine**



the eligibility of the activity.

| Number of Persons Served | CDBG Actual | HOME Actual |
|--------------------------|-------------|-------------|
| Extremely Low-income     | 0           | 0           |
| Low-income               | 0           | 0           |
| Moderate-income          | 0           | 0           |
| <b>Total</b>             | <b>0</b>    | <b>0</b>    |

**Table 6 – Number of Persons Served**

### **Narrative Information**

For the five year period covered by the Consolidated Plan, Pflugerville does not intend to target CDBG funds toward efforts to aid in housing needs. However, recognizing that a diversity of housing types and affordability is important not only to the individual citizen but the community as a whole, staff continues to review public policies to ensure housing is accommodated within the community and participate in planning efforts that aid in the development of affordable projects within Pflugerville as well as the Central Texas region. Additionally, the City works with various affordable housing groups to assist in determining areas suitable for a variety of affordable housing projects.

**CR-25 - Homeless and Other Special Needs 91.220(d, e); 91.320(d, e); 91.520(c)**

**Evaluate the jurisdiction's progress in meeting its specific objectives for reducing and ending homelessness through:**

**Reaching out to homeless persons (especially unsheltered persons) and assessing their individual needs**

**Addressing the emergency shelter and transitional housing needs of homeless persons**

**Helping homeless persons (especially chronically homeless individuals and families, families with children, veterans and their families, and unaccompanied youth) make the transition to permanent housing and independent living, including shortening the period of time that individuals and families experience homelessness, facilitating access for homeless individuals and families to affordable housing units, and preventing individuals and families who were recently homeless from becoming homeless again**

**Helping low-income individuals and families avoid becoming homeless, especially extremely low-income individuals and families and those who are: likely to become homeless after being discharged from publicly funded institutions and systems of care (such as health care facilities, mental health facilities, foster care and other youth facilities, and corrections programs and institutions); and, receiving assistance from public or private agencies that address housing, health, social services, employment, education, or youth needs**

For the five year period covered by the Consolidated Plan, Pflugerville does not intend to target CDBG funds toward efforts to aid in homeless needs. However, the City will continue to coordinate with the ECHO to become more knowledgeable about homeless needs within our community.

## **CR-30 - Public Housing 91.220(h); 91.320(j)**

### **Actions taken to address the needs of public housing**

For the five year period covered by the Consolidated Plan, Pflugerville does not intend to target CDBG funds toward efforts to aid in public housing.

### **Actions taken to encourage public housing residents to become more involved in management and participate in homeownership**

Not applicable

### **Actions taken to provide assistance to troubled PHAs**

Not applicable

## **CR-35 - Other Actions 91.220(j)-(k); 91.320(i)-(j)**

**Actions taken to remove or ameliorate the negative effects of public policies that serve as barriers to affordable housing such as land use controls, tax policies affecting land, zoning ordinances, building codes, fees and charges, growth limitations, and policies affecting the return on residential investment. 91.220 (j); 91.320 (i)**

In February of 2015, the City adopted an updated Unified Development Code (UDC). The UDC is document outlining the required regulations for all development within the City. With the update, the City added a variety of housing options in order to provide a greater mix of housing opportunities within the community. This included allowing for greater flexibility in lot sizes (small to large lots), housing types (single family, multi-family, condominiums, and townhomes) as well as clearly defining the architectural and other building requirements. This provides developers the opportunity to construct affordable housing by allowing smaller residential development with greater overall density whether it be for smaller single family lots or higher density multifamily project.

**Actions taken to address obstacles to meeting underserved needs. 91.220(k); 91.320(j)**

Potential obstacles to meeting underserved needs include: rapid population growth, need for transportation to existing services, access to affordable recreation facilities and programs, rising cost of housing. While population growth will occur Pflugerville has worked through various planning processes to help manage that growth over time, addressing water, wastewater, parks, trails, land use, housing and a multitude of other issues that coincide with a rapidly growing city. The projects selected are to complement the long term plans for a growing city that aid in meeting underserved needs of the low to moderate income population. Within PY 2014 the selected and completed projects were chosen to help to provide more affordable and accessible programs and parks facilities within the community.

**Actions taken to reduce lead-based paint hazards. 91.220(k); 91.320(j)**

The City utilizes community services provided by Travis County for the remediation of lead based paint in Pflugerville's housing supply. Approximately 226 homes within the City of Pflugerville were constructed during the time when lead based paint was accepted for use. The City will continue to utilize Travis County Health and Human Services and Veterans Services, which receives funds through State grants and the Travis County General Fund to provide limited lead based paint remediation on houses built before 1978 where small holes in the wall or similar acts could cause additional lead exposure.

**Actions taken to reduce the number of poverty-level families. 91.220(k); 91.320(j)**

Approximately 10% of Pflugerville residents live in poverty (ACS 2013 5 year estimate). Female headed households with children are particularly affected by poverty. The City's anti-poverty strategy is based on attracting a range of businesses and providing workforce development and a mix of uses throughout the community that are supportive of each other reducing or eliminating the need to find housing, employment or services outside of the community. These strategies are reflected through the City's



Unified Development Code (UDC) and policies of the Pflugerville Community Development Corporation for attracting employment to the community.

**Actions taken to develop institutional structure. 91.220(k); 91.320(j)**

The key departments and agencies that are involved in the implementation of the plan are described below.

**Public Sector**

City of Pflugerville, Planning Department

The Planning Department is responsible for the administration of the City's programs funded by entitlement grants; Community Development Block Grant (CDBG). The office has primary responsibility for managing and implementing the City's Consolidated/Annual Action Plan programs and related documents.

City of Pflugerville, Finance Department

The City Finance Department manages the entitlement grants (CDBG) procurement processes for commodities, professional services and construction. Expertise in the area of federal standards has been created within the department. The department submits all financial reports, including the SF-425.

Travis County Health & Human Services and Veterans Services Department (TCHHS/VS)

TCHHS/VS offers a variety of Services to Pflugerville and Travis County residents including:

- Utility, Rent and Mortgage Assistance
- Family Assistance
- Children's Services
- Senior Services
- Public Health Services
- Emergency Services

**Coordination**

The City is committed to continuing its participation and coordination with federal, state, county and local agencies as well as with the private and non-profit sector, to serve the needs of target income individuals and families in the community. The City will continue to work with the area service providers as well as the building industry to address housing and community needs.

**Actions taken to enhance coordination between public and private housing and social service agencies. 91.220(k); 91.320(j)**

The City has been working to improve communications with the social services within our community as well as continue to learn and open dialogue with public and private housing agencies within the central Texas region. The City consults with various social service agency before and after the selection of projects to determine if the needs are still the same as originally identified and then recommended adjustments

are made accordingly, while maintaining the goals of the Consolidated Plan as well as being mindful of the budget constraints.

**Identify actions taken to overcome the effects of any impediments identified in the jurisdictions analysis of impediments to fair housing choice. 91.520(a)**

People of protected classes need quality information about all neighborhood and housing options that are available to them, as well as the tools to overcome real and perceived barriers in the housing market.

In response to these impediments, the City of Pflugerville has prioritized the following as actions to be taken to achieve fair housing choice and equal opportunity:

- The City of Pflugerville will provide staff with the latest training and education on the fair housing regulations.
- City staff will work with HUD to provide better information about needs of persons with special needs and disabilities.
- The Community Development Block Grant (“CDBG”) has listed infrastructure projects to accommodate persons with disabilities and special needs. The City will allocate CDBG funds to update sidewalks to ADA standards, and improve pedestrian connections to reduce barriers for the disabled.
- The City of Pflugerville will refresh the community development website to provide links to local, state, and national housing authorities. Housing authorities that will be available online are the Department of Housing and Urban Development (“HUD”), Texas Workforce Commission (“TWC”) and Texas Department of Housing & Community Affairs (“TDHCA”).
- City staff will make publicly available information and forms on fair housing readily available to people with special needs and limited English proficiency.
- City staff will provide Fair Housing complaint forms online that will provide information about the complaint process. The City will also distribute hard copies to local public service agencies to aid residents in filing a complaint with HUD.
- Texas Department of Housing and Community Affairs requires five hours of approved fair housing training for architects, developers, engineers, management companies responsible for fair housing compliance. City staff will provide information for TDHCA recommended fair housing training via the City of Pflugerville community development website.

## **CR-40 - Monitoring 91.220 and 91.230**

**Describe the standards and procedures used to monitor activities carried out in furtherance of the plan and used to ensure long-term compliance with requirements of the programs involved, including minority business outreach and the comprehensive planning requirements.**

As the lead agency for the development and implementation of the Consolidated/Annual Action Plan, the Planning department implements standard policies and procedures for monitoring the implementation of CDBG projects.

Monitoring activities included weekly staff meetings to discuss tasks of the CDBG projects, weekly site visits to project locations, and close out interviews with contracted construction employees. The City's parks maintenance program works to maintain all of the infrastructure within the park system and will maintain the improvements installed at Windermere Park.

These monitoring activities met compliance with program regulations and compliance with financial requirements.

## **Citizen Participation Plan 91.105(d); 91.115(d)**

**Describe the efforts to provide citizens with reasonable notice and an opportunity to comment on performance reports.**

Citizens are invited to comment on all performance reports. Notice of reports are issued through the local newspapers, the City website, City's electronic newsletter, information placed at the Public Library as well as the Travis County Community Center. Notices are issued at the beginning of the comment period as well as throughout the fifteen day review and comment period.

At the December 8 City Council meeting, the accomplishments of PY2014 will be reviewed with City Council during a public hearing.

No public comments have been received, as of the published date of the CAPER.

## **CR-45 - CDBG 91.520(c)**

**Specify the nature of, and reasons for, any changes in the jurisdiction's program objectives and indications of how the jurisdiction would change its programs as a result of its experiences.**

There were numerous changes to our program objectives either in revision to previously submitted items or the complete removal of the project. This is predominantly attributed to revision the geographic boundaries and subsequent LMI numbers after the Action Plan was adopted, but prior the any of the projects being submitted for bid. As a result several projects had to be revisited and re-written, which added to the length of time before they could be executed. In one instance a project had to be completely removed from consideration just days before going to bid. Because of the removal of this project another CDBG project was also delayed. This was primarily because of higher construction costs associated with a greatly reduced scope of work, which did not allow the city to leverage economies of scale.

An improved vesting mechanism upon submittal of projects ahead of the bid process would have allowed all of the projects to go forward. A method of formal notification of changes to geographic boundaries and percent LMI from HUD would also have helped alleviate some of this. Without a formal method of notification it is incumbent on the applicant to know when changes occur, which in this situation would have saved the City much needed time.

In addition to changes to geographic boundaries and LMI numbers, the City had several instances of HUDs website not working. This resulted in further prolonging the submittal of projects and reports. The end result being a greatly compressed submittal and revision time for several reports.

**Does this Jurisdiction have any open Brownfields Economic Development Initiative (BEDI) grants?**

Not Applicable

**[BEDI grantees] Describe accomplishments and program outcomes during the last year.**

Not Applicable



## CR-60 - ESG 91.520(g) (ESG Recipients only)

ESG Supplement to the CAPER in *e-snaps*

For Paperwork Reduction Act

### 1. Recipient Information—All Recipients Complete

#### Basic Grant Information

|   |              |
|---|--------------|
| Recipient Name  | PFLUGERVILLE |
| Organizational DUNS Number  | 029047073    |
| EIN/TIN Number  | 741737408    |
| Identify the Field Office   | SAN ANTONIO  |
| Identify CoC(s) in which the recipient or subrecipient(s) will provide ESG assistance |              |

### 2. Reporting Period—All Recipients Complete

|                         |            |
|-------------------------|------------|
| Program Year Start Date | 10/01/2014 |
| Program Year End Date   | 09/30/2015 |

## CR-65 - Persons Assisted

### 4. Persons Served

#### 4a. Complete for Homelessness Prevention Activities

| Number of Persons in Households | Total    |
|---------------------------------|----------|
| Adults                          | 0        |
| Children                        | 0        |
| Don't Know/Refused/Other        | 0        |
| Missing Information             | 0        |
| <b>Total</b>                    | <b>0</b> |

Table 7 – Household Information for Homeless Prevention Activities

#### 4b. Complete for Rapid Re-Housing Activities

| Number of Persons in Households | Total    |
|---------------------------------|----------|
| Adults                          | 0        |
| Children                        | 0        |
| Don't Know/Refused/Other        | 0        |
| Missing Information             | 0        |
| <b>Total</b>                    | <b>0</b> |

Table 8 – Household Information for Rapid Re-Housing Activities

#### 4c. Complete for Shelter

| Number of Persons in Households | Total    |
|---------------------------------|----------|
| Adults                          | 0        |
| Children                        | 0        |
| Don't Know/Refused/Other        | 0        |
| Missing Information             | 0        |
| <b>Total</b>                    | <b>0</b> |

Table 9 – Shelter Information

#### 4d. Street Outreach

| Number of Persons in Households | Total    |
|---------------------------------|----------|
| Adults                          | 0        |
| Children                        | 0        |
| Don't Know/Refused/Other        | 0        |
| Missing Information             | 0        |
| <b>Total</b>                    | <b>0</b> |

Table 10 – Household Information for Street Outreach

#### 4e. Totals for all Persons Served with ESG

| Number of Persons in Households | Total    |
|---------------------------------|----------|
| Adults                          | 0        |
| Children                        | 0        |
| Don't Know/Refused/Other        | 0        |
| Missing Information             | 0        |
| <b>Total</b>                    | <b>0</b> |

Table 11 – Household Information for Persons Served with ESG

#### 5. Gender—Complete for All Activities

|                          | Total    |
|--------------------------|----------|
| Male                     | 1822     |
| Female                   | 2198     |
| Transgender              | 0        |
| Don't Know/Refused/Other | 0        |
| Missing Information      | 0        |
| <b>Total</b>             | <b>0</b> |

Table 12 – Gender Information

## 6. Age—Complete for All Activities

|                          | <b>Total</b> |
|--------------------------|--------------|
| Under 18                 | 1262         |
| 18-24                    | 277          |
| 25 and over              | 2504         |
| Don't Know/Refused/Other | 0            |
| Missing Information      | 0            |
| <b>Total</b>             | <b>4044</b>  |

**Table 13 – Age Information**

## 7. Special Populations Served—Complete for All Activities

| Number of Persons in Households        |         |  |                                     |  |
|--|---------|--|-------------------------------------|--|
| Subpopulation                          | Total   | Total<br>Persons<br>Served –<br>Prevention | Total<br>Persons<br>Served –<br>RRH | Total<br>Persons<br>Served in<br>Emergency<br>Shelters |
| Veterans                               | Unknown |  |                                     |  |
| Victims of<br>Domestic<br>Violence     | Unknown |  |                                     |  |
| Elderly                                | 6.9%    |  |                                     |  |
| HIV/AIDS                               | Unknown |  |                                     |  |
| Chronically<br>Homeless                | Unknown |  |                                     |  |
| Persons with Disabilities:             |         |  |                                     |  |
| Severely<br>Mentally Ill               | Unknown |  |                                     |  |
| Chronic<br>Substance<br>Abuse          | Unknown |  |                                     |  |
| Other<br>Disability                    | Unknown |  |                                     |  |
| Total<br>(unduplicated<br>if possible) | 11.3%   |  |                                     |  |

**Table 14 – Special Population Served**

## CR-70 – ESG 91.520(g) - Assistance Provided and Outcomes

### 10. Shelter Utilization

|  |   |
|--|---|
| Number of New Units – Rehabbed         | 0 |
| Number of New Units – Conversion       | 0 |
| Total Number of bed - nights available | 0 |
| Total Number of bed - nights provided  | 0 |
| Capacity Utilization                   | 0 |

Table 15 – Shelter Capacity

### 11. Project Outcomes Data measured under the performance standards developed in consultation with the CoC(s)

Not Applicable.

## CR-75 – Expenditures

### 11. Expenditures

#### 11a. ESG Expenditures for Homelessness Prevention – NOT APPLICABLE

|   | Dollar Amount of Expenditures in Program Year |      |      |
|---|---|------|------|
|   | 2012  | 2013 | 2014 |
| Expenditures for Rental Assistance  |   |      |      |
| Expenditures for Housing Relocation and Stabilization Services - Financial Assistance |   |      |      |
| Expenditures for Housing Relocation & Stabilization Services - Services               |   |      |      |
| Expenditures for Homeless Prevention under Emergency Shelter Grants Program           |   |      |      |
| <b>Subtotal Homelessness Prevention</b>   |   |      |      |

Table 16 – ESG Expenditures for Homelessness Prevention

#### 11b. ESG Expenditures for Rapid Re-Housing - NOT APPLICABLE

|   | Dollar Amount of Expenditures in Program Year |      |      |
|---|---|------|------|
|   | 2012  | 2013 | 2014 |
| Expenditures for Rental Assistance  |   |      |      |
| Expenditures for Housing Relocation and Stabilization Services - Financial Assistance |   |      |      |
| Expenditures for Housing Relocation & Stabilization Services - Services               |   |      |      |
| Expenditures for Homeless Assistance under Emergency Shelter Grants Program           |   |      |      |
| <b>Subtotal Rapid Re-Housing</b>  |   |      |      |

Table 17 – ESG Expenditures for Rapid Re-Housing

#### 11c. ESG Expenditures for Emergency Shelter - NOT APPLICABLE

|                    | Dollar Amount of Expenditures in Program Year |      |      |
|--------------------|---|------|------|
|                    | 2012  | 2013 | 2014 |
| Essential Services |   |      |      |
| Operations         |   |      |      |
| Renovation         |   |      |      |
| Major Rehab        |   |      |      |
| Conversion         |   |      |      |
| <b>Subtotal</b>    |   |      |      |

Table 18 – ESG Expenditures for Emergency Shelter

**11d. Other Grant Expenditures - NOT APPLICABLE**

|                 | Dollar Amount of Expenditures in Program Year |      |      |
|-----------------|---|------|------|
|                 | 2012  | 2013 | 2014 |
| Street Outreach |   |      |      |
| HMIS            |   |      |      |
| Administration  |   |      |      |

Table 19 - Other Grant Expenditures

**11e. Total ESG Grant Funds - NOT APPLICABLE**

| Total ESG Funds Expended | 2012 | 2013 | 2014 |
|--------------------------|------|------|------|
|                          |      |      |      |

Table 20 - Total ESG Funds Expended

**11f. Match Source - NOT APPLICABLE**

|                           | 2012 | 2013 | 2014 |
|---------------------------|------|------|------|
| Other Non-ESG HUD Funds   |      |      |      |
| Other Federal Funds       |      |      |      |
| State Government          |      |      |      |
| Local Government          |      |      |      |
| Private Funds             |      |      |      |
| Other                     |      |      |      |
| Fees                      |      |      |      |
| Program Income            |      |      |      |
| <b>Total Match Amount</b> |      |      |      |

Table 21 - Other Funds Expended on Eligible ESG Activities

**11g. Total - NOT APPLICABLE**

| Total Amount of Funds Expended on ESG Activities | 2012 | 2013 | 2014 |
|--|------|------|------|
|  |      |      |      |

Table 22 - Total Amount of Funds Expended on ESG Activities