

Discussion regarding City aquatic facilities and future planning.



Falcon Pointe Splash Pad



- 800 sq/ft splash pad with spray features including vertical interactive elements and standard sprays.
- Suffered no damage during winter storm event.
- Open May 29 (Memorial Day Weekend) through September 6 (Labor Day)



Stone Hill Splash Pad



- 850 sq/ft splash pad, recirculating system with a filter, chemical treatment system, spray features including vertical geysers, jet streams, and vertical elements.
- Suffered no damage during winter storm event.
- Scheduled to have concrete etching prior to summer opening to enhance slip prevention and enhancing landscaping to help with erosion control.
- Open May 29 (Memorial Day Weekend) through September 6 (Labor Day)



Windermere Pool



- Five-lane, 25-yard pool with depth ranges from 4 – 5 ft, built and formerly owned by the neighborhood HOA.
- Sustained no damage during the winter storm.
- Open May 29 (Memorial Day Weekend) through September 6 (Labor Day)



Gilleland Creek Pool



- Jr. Olympic-sized 8 lane, 25-meter pool with zero entry access. Depths range in swimming areas from 3.5 ft to 6.7 ft and the zero-entry area transitions to 3ft.
- Two portable restrooms currently available on site.
- Bathroom trailers on site during summer operations at a cost of \$25,000 for 3.5 months.
- No showers provided currently.
- Impacted by winter storm event. Incurred approximately \$5,000 in damages to the pump system. All repairs made.
- Operational and open year-round.

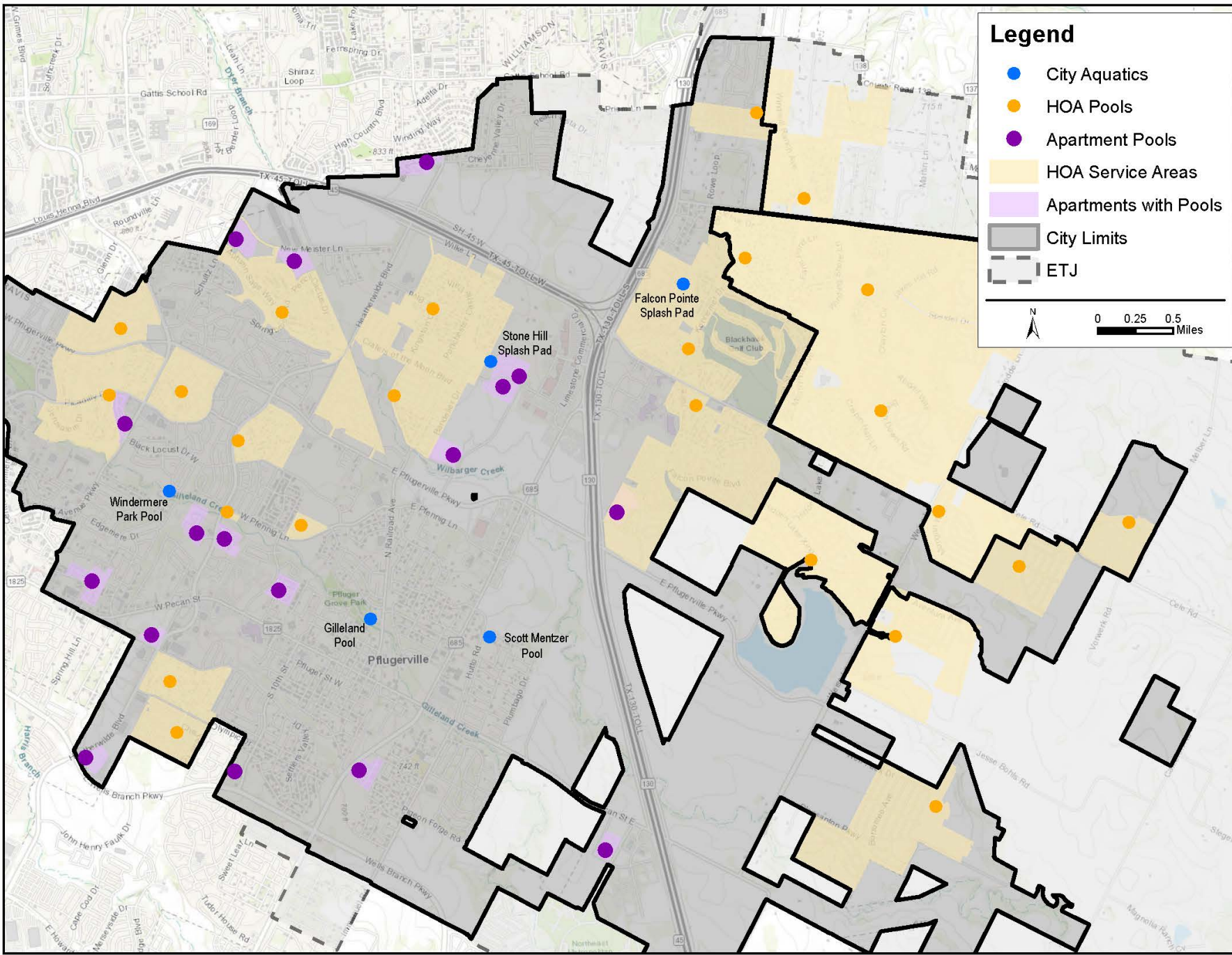


Scott Mentzer Pool



- Family-style water park facility with slides, above ground play features and zero entry pools and play areas. No lap swimming or swim lessons offered in this facility.
- Significant impact from winter storm event.
 - \$54,798 to repair all 6 pool motors, electrical panels, and pool plumbing.
 - \$116,850 for full replaster and tile replacement.
- Pool is currently inoperable.
- Anticipate opening in July with Council approval of repairs on April 27th.





Aquatic Facilities Within City & ETJ

