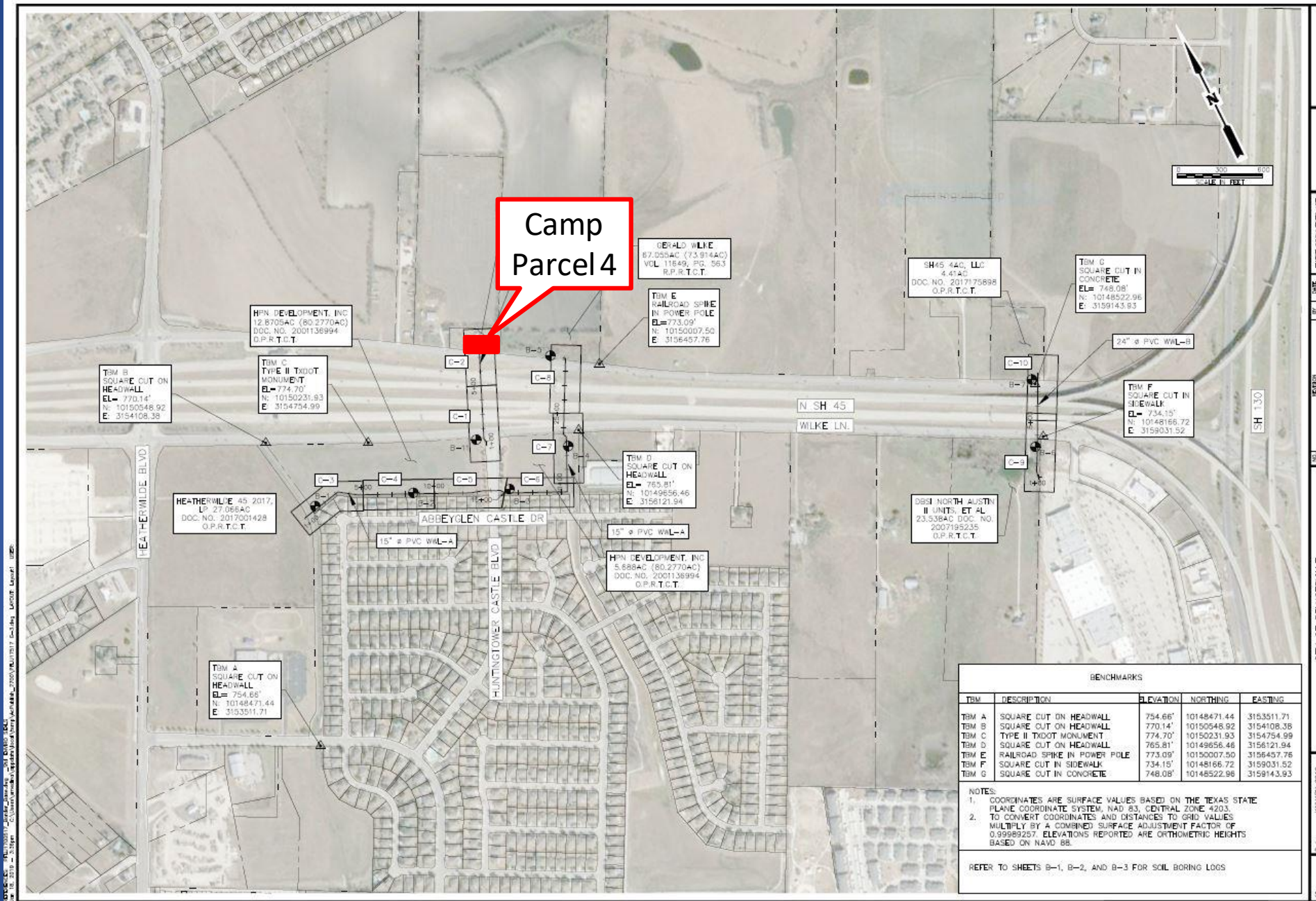




2020-8519

Approving a purchase agreement and associated conveyance documents between Charles Hardin Camp II and the City of Pflugerville as necessary to acquire real property interests for the SH 45 Water and Wastewater Line Project



Camp Parcel 4

TBM B
SQUARE CUT ON
HEADWALL
EL= 770.14'
N: 10150548.92
E: 3154108.38

HFN DEVELOPMENT, INC
12.8705AC (80.2770AC)
DOC. NO. 2001138994
O.P.R.T.C.T.

TBM C
TYPE II TxDOT
MONUMENT
EL= 774.70'
N: 10150231.93
E: 3154754.99

GERALD WILIE
87.205AC (73.914AC)
VOL 11649, PG. 563
R.P.R.T.C.T.

TBM E
RAILROAD SPIKE
IN POWER POLE
EL= 773.09'
N: 10150007.50
E: 3156457.76

SH45 440, LLC
4.45AC
DOC. NO. 2017175688
O.P.R.T.C.T.

TBM G
SQUARE CUT IN
CONCRETE
EL= 748.08'
N: 10148522.98
E: 3159143.93

HEATHER WILDE 43, 2017,
LP 27.066AC
DOC. NO. 2017001428
O.P.R.T.C.T.

TBM D
SQUARE CUT ON
HEADWALL
EL= 765.81'
N: 10149556.46
E: 3156121.94

DBS NORTH AUSTIN
II UNITS, ET AL
23.538AC DOC. NO.
2007195235
O.P.R.T.C.T.

TBM A
SQUARE CUT ON
HEADWALL
EL= 754.66'
N: 10148471.44
E: 3153511.71

HFN DEVELOPMENT, INC
5.688AC (80.2770AC)
DOC. NO. 2001138994
O.P.R.T.C.T.

BENCHMARKS				
TBM	DESCRIPTION	ELEVATION	NORTHING	EASTING
TBM A	SQUARE CUT ON HEADWALL	754.66'	10148471.44	3153511.71
TBM B	SQUARE CUT ON HEADWALL	770.14'	10150548.92	3154108.38
TBM C	TYPE II TxDOT MONUMENT	774.70'	10150231.93	3154754.99
TBM D	SQUARE CUT ON HEADWALL	765.81'	10149556.46	3156121.94
TBM E	RAILROAD SPIKE IN POWER POLE	773.09'	10150007.50	3156457.76
TBM F	SQUARE CUT IN SIDEWALK	734.15'	10148166.72	3159031.52
TBM G	SQUARE CUT IN CONCRETE	748.08'	10148522.98	3159143.93

NOTES:
 1. COORDINATES ARE SURFACE VALUES BASED ON THE TEXAS STATE PLANE COORDINATE SYSTEM, NAD 83, CENTRAL ZONE 4203.
 2. TO CONVERT COORDINATES AND DISTANCES TO GRID VALUES MULTIPLY BY A COMBINED SURFACE ADJUSTMENT FACTOR OF 0.99999257. ELEVATIONS REPORTED ARE ORTHOMETRIC HEIGHTS BASED ON NAVD 88.

REFER TO SHEETS B-1, B-2, AND B-3 FOR SOIL BORING LOGS



NO.	REVISION	BY	DATE

VERIFY SCALE: NOT BE ONE INCH OR THE FEET, ADJUST SCALE IF NECESSARY.
 THESE DOCUMENTS ARE REVIEW ONLY AND ARE NOT TO BE USED FOR CONSTRUCTION OR FOR ANY OTHER PURPOSES.
 JANUARY 2019
 P.E. NO. 102846

CITY OF PFLUGERVILLE
 SH 45
 WATER AND WASTEWATER EXTENSIONS
 PROJECT LAYOUT,
 BENCHMARK AND BORE LOCATIONS

DATE:	JANUARY 2019
DESIGNED:	BOB
DRAWN:	SSM
REVIEWED:	BAK
CP&Y Proj. No.:	HFU17005177



Staff recommends approving a purchase agreement and associated conveyance documents between Charles Hardin Camp II and the City of Pflugerville as necessary to acquire real property interests for the SH 45 Water and Wastewater Line Project