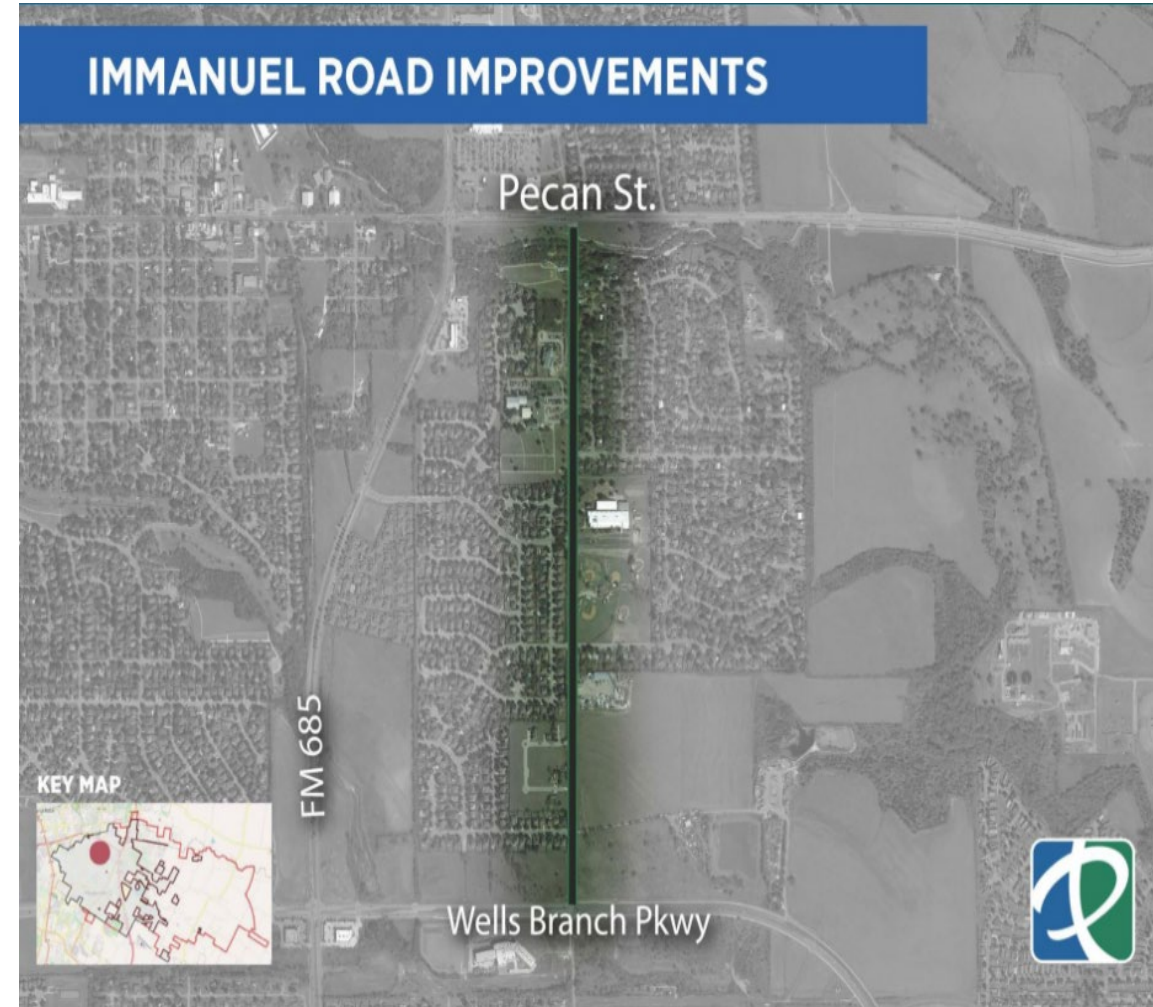




2022-0159

Approving a Professional Services Supplemental Agreement with Rodriguez Transportation Group, Inc. in the amount of \$363,029.40 for professional engineering services associated with the 2020 Transportation Bond Program Project; Immanuel Road Improvements and authorizing the City Manager to execute same.





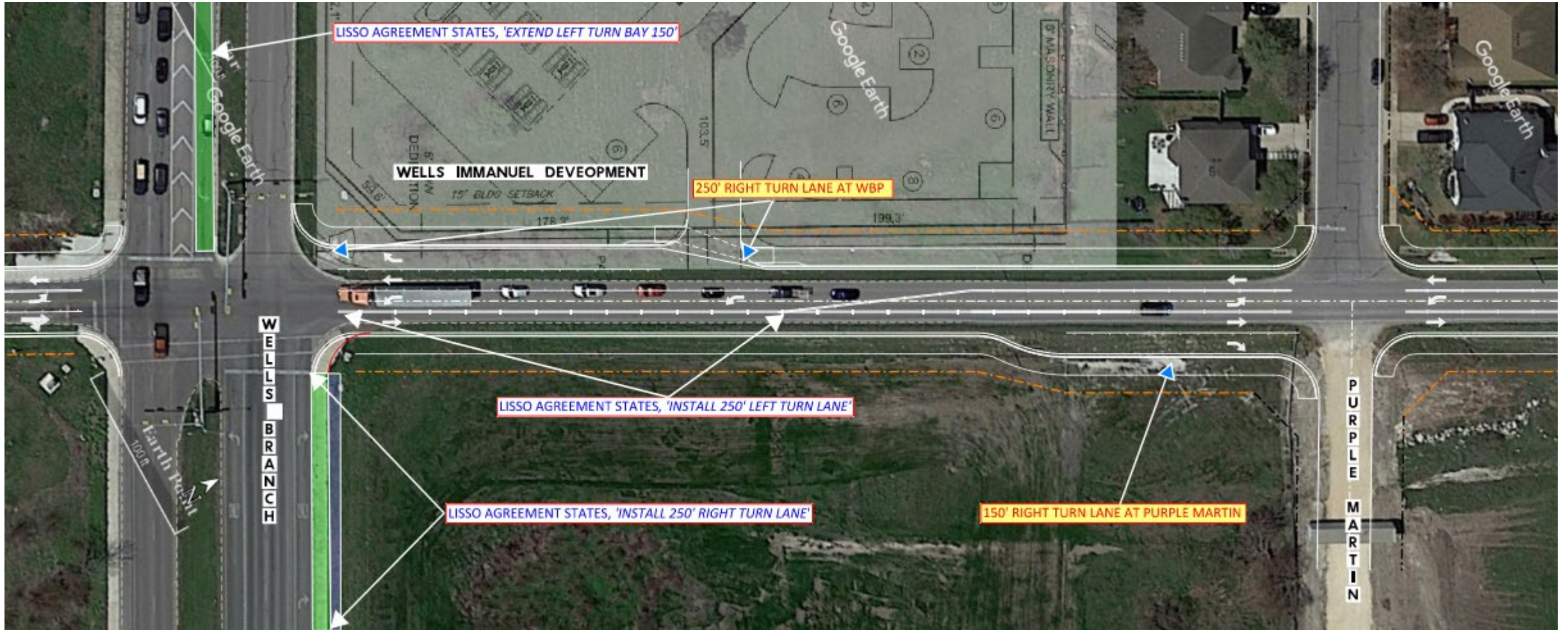
Project Limit

Extension 700' South (City Limits)





Lisso Traffic Impact Analysis (TIA) Associated & Added Improvements





Lisso Traffic Impact Analysis (TIA) Associated Improvements





Additional Scope of Services

The amended scope of services include data collection, reports, and design to extend the project limits south of Wells Branch Pkwy to just north of Killingworth Lane (City Limits). Associated upgrades per previous developer agreements with City of Pflugerville are also included.

- Field surveying
- Preparation of ROW acquisition documents
- Subsurface utility engineering
- Environmental services
- Geotechnical studies
- Bridge assessment and design
- Hydrologic/hydraulic analysis
- Retaining Wall Design
- Traffic signal/illumination
- Preparation of a geometric schematic





Staff Recommendation

Approve a professional services supplemental agreement with Rodriguez Transportation Group, Inc. (RTG) in the amount of \$363,029.40 for professional engineering services associated with the 2020 Transportation Bond Program Project: Immanuel Road Improvements and authorizing the City Manager to execute same.