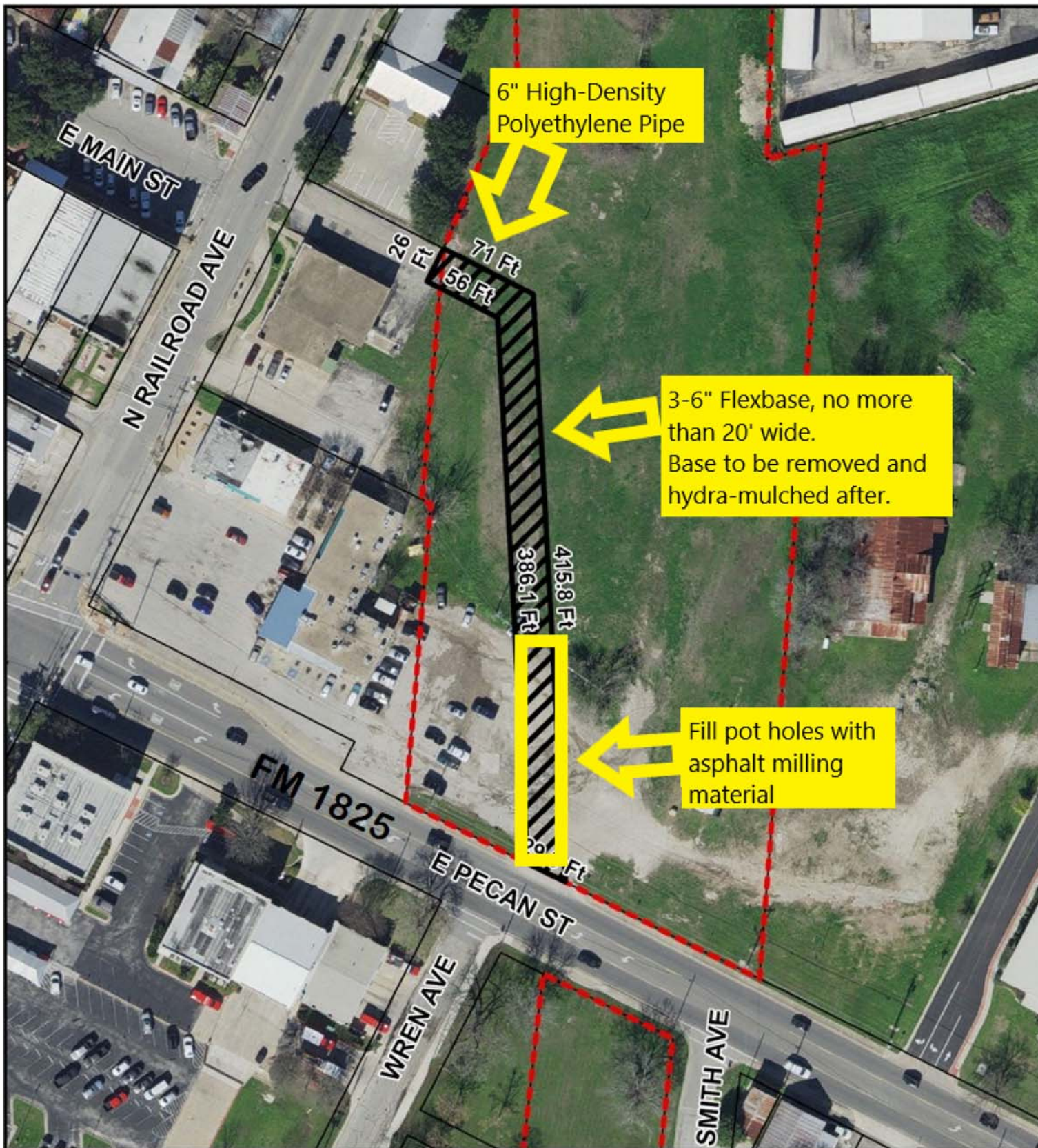


# Exhibit C



There is a small swale at that runs north to south and crosses the north end of the proposed driveway where we will install a small drain pipe in the event of rain, which will be removed after the event.

3-6" Flexbase depending on the elevation which will be removed at the end of the event.

The current "parking area" will be leveled with asphalt milling material, which we can leave or remove depending on direction of TxDOT.

The grass will be hydra-mulched and re-vegetated.

All other damage, such as rutting caused by motorists leaving the driveway, will be corrected.

<p><b>Proposed COVID-19 Testing Driveway</b></p> <p>8/10/20</p>	<p><b>Legend</b></p> <p> Proposed COVID Testing Driveway</p> <p> MOKAN ROW</p> <p><b>Driveway at FM 1825:</b> 30.439028 N -97.618861 W</p> <p></p>	<p></p> <p><small>This product is for informational purposes and they not have been prepared for or be suitable for legal, engineering, or surveying purposes. It does not represent an on-the-ground survey and represents only the approximate relative location of property boundaries. The City of Pflugerville makes no warranty, representation, or guarantee of any kind regarding either the maps or information provided herein. The City of Pflugerville specifically disclaims all representations or warranties, express or implied, including, without limitation, the implied warranties of merchantability and fitness for a particular purpose. No responsibility is assumed for damages or other liabilities due to the accuracy, availability, completeness, use or misuse of the information provided. For additional information please call the City's Geographic Information Services Division at (512) 990-6300 or visit the City's website at www.pflugerville.gov</small></p> <p> <b>PFLUGERVILLE TEXAS</b></p>	<p><b>Locator Map</b></p>
---	--	--	---------------------------