

**Approving a resolution authorizing a  
Local On-System Improvement  
Agreement with Texas Department of  
Transportation associated with the City  
Intersection Improvements at E.  
Pflugerville Parkway and FM 685.**



# E. Pflugerville Parkway and FM 685

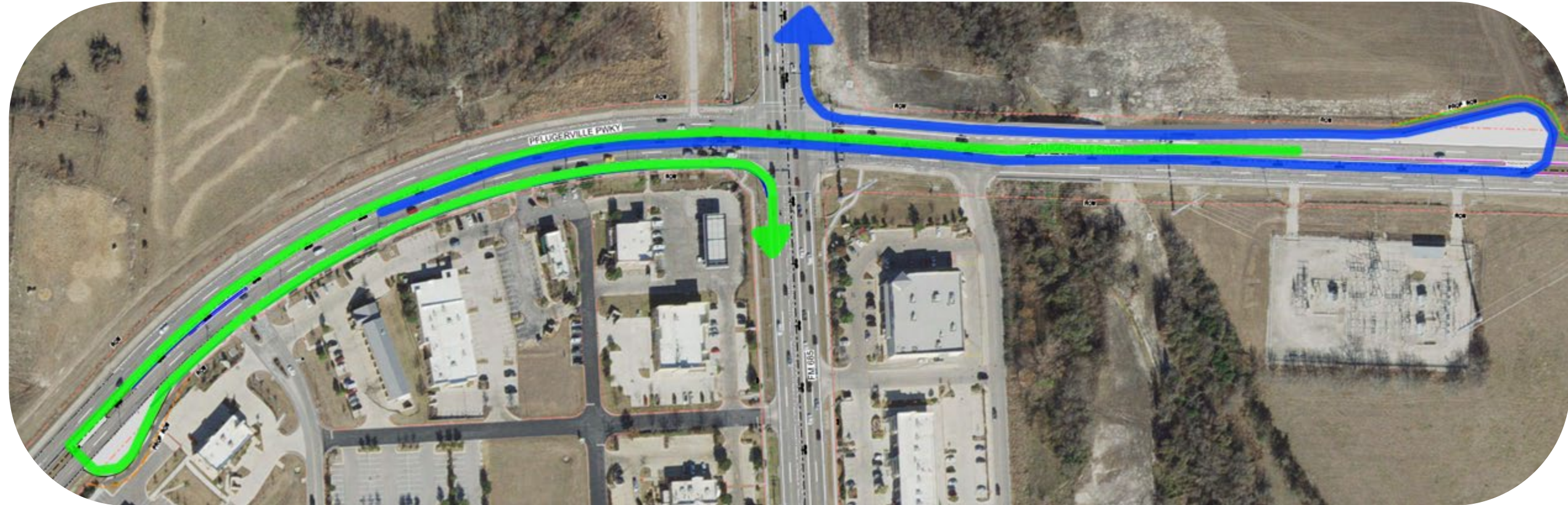


## Improve safety and reduce congestion

- Add Displaced Left Turn Lane with U-turns east and west of intersection
- Install signals at Displaced Left Turns and U-turns
- Modify signal timing
- Add Right Turn Lane at E. Pflugerville Parkway to southbound FM 685



# E. Pflugerville Parkway at FM 685



# Recommendation

- **Approve a resolution authorizing a Local On-System Improvement Agreement with Texas Department of Transportation associated with the City Intersection to initiate design of the Improvements at E. Pflugerville Parkway and FM 685.**

