

# 2021-0554

Discuss and consider the use of bond funds currently allocated for the Gilleland Creek Pool Bathhouse and considering options proposed by staff as to potential projects.



# Background

The Gilleland Creek Pool Bathhouse project was allocated \$1,200,000 for the demolition and replacement of the structures at the facility, there remains \$1,130,371 within that allocation following the City Council's previous unanimous decision on April 13, 2021 to not move forward with the project of replacing the structures at the pool. Staff has arrived at several possibilities for the reallocation of those funds and is requesting a discussion and direction regarding these funds and the most appropriate project(s) to accomplish with the reallocation.



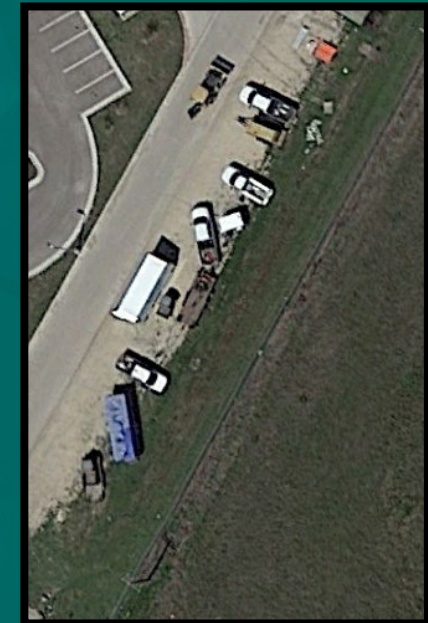
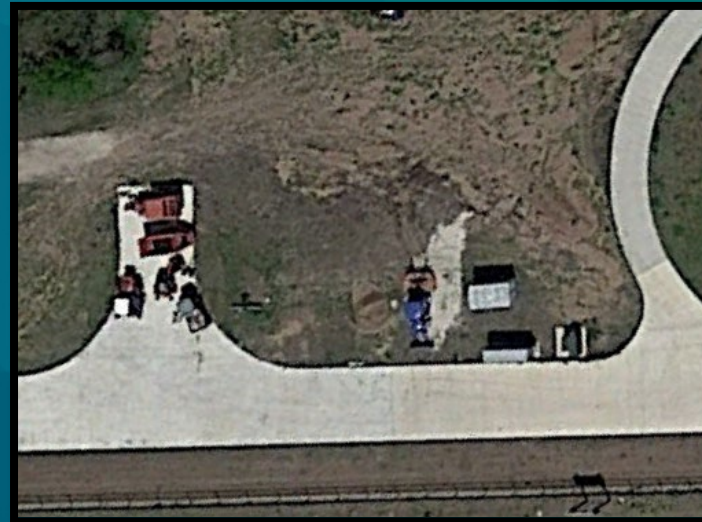
# Option “A” – Parks Maintenance Facility

- Complete the construction of a standalone Parks Maintenance Facility.
- Create much needed space at P/W Facility.
- Allows Parks Operations a daily meeting space with secure storage of tools, goods and supplies.
- Similar facility recently cost - \$2.0 million
- Provide central location for staff to access future city-wide facilities.

Funds Currently Allocated - \$740,000

Estimated Total Cost - \$1,870,000

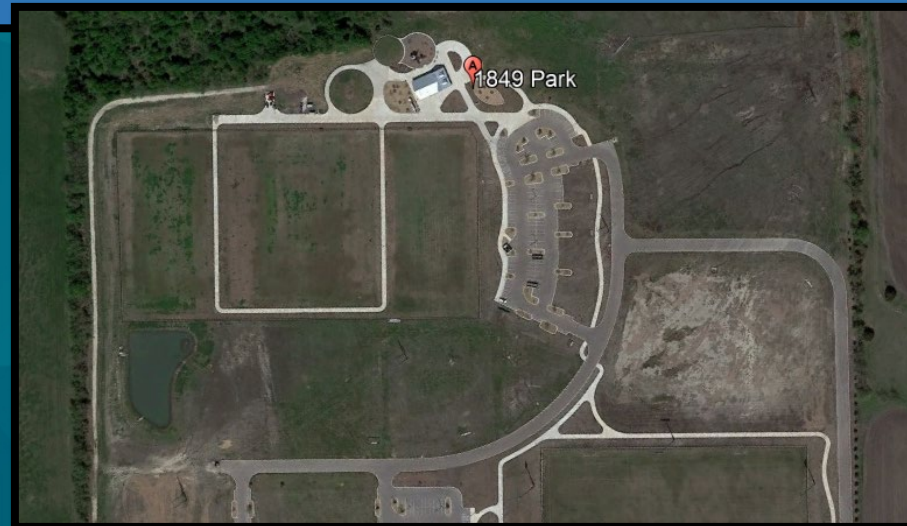
Funds Needed Option “A”- \$1,130,000



# Option “B” – 1849 Park Ph. 1 Improvements

- Add field lights to the football fields to allow for expanded field usage.
- Expand the existing parking lots. Current parking does not allow for complete utilization of the existing fields.
- Correct drainage issues present on the fields.

Football Field Lights	\$600,000
Parking Lot Expansion	\$200,000
<u>Field Drainage Improvements-</u>	<u>\$330,000</u>
Total Funds Option “B” -	\$1,130,000



# Option “C” – Parks Improvements

- Bohls House “Green Room” - Remodel the rear portion of the house to allow for a make ready area for event attendees.
- Bohls House Utilities - Continue renovations to allow the first floor to be code compliant with electrical and plumbing requirements.
- Geneva’s Park Playground - Play equipment was removed previously due to damage and can not be replaced. Funds to allow the replacement of the existing equipment and install shade.



Bohls House “Green Room”	- \$150,000
Bohls House Utilities	- \$75,000
Geneva’s Park Playground	- \$150,000

(cont.)



# Option “C” – Parks Improvements (cont.)

- BMX/Pump Track - Accessible path and re-construct the starting platform for compliance with floodplain and structural issues.
- 1849 Play Shade - Provide play shade over the two play areas at 1849 Park
- Outdoor Fitness Center - Anticipating a \$25,000 grant from the National Fitness Campaign organization. Possible locations - Bohls Park, Pecan Park, Lake Pflugerville Park or Kelly Lane Park.
- Accelerate the repair and elimination of prioritized accessibility issues within park.

BMX/Pump Track Imp.-	\$115,000
1849 Park Play Shade-	\$110,000
Outdoor Fitness Center -	\$180,000
<u>Accessibility Improvements -</u>	<u>\$350,000</u>
<u>Total of Option “C” -</u>	<u>\$1,130,000</u>



# Option “D” – Gilleland Creek Pool Bathhouse

- Remove and replace the buildings at the pool due to location within the floodplain and extensive flood damage.
- Raise the building elevation to above Base Flood Elevation, and prevent possible future damage with design and construction.
- Volume compensation for fill material in floodway will be realized on-site for required offset.
- Bathhouse will be in same location, ticket/guard house will be relocated out of floodway and closer to parking for better patron access and improved pool viewing.



Design	\$92,500
Demolition and <u>Construction</u>	<u>\$1,037,500</u>
Total	\$1,130,000



# Recommendation

Staff is recommending that the City Council authorize staff to reallocate the remaining funds allocated for the Gilleland Creek Pool Bathhouse for use to construct the Parks Operation Facility at 1849 Park as described in Option A, thus alleviating a portion of the overcrowding at Public Works and providing a workspace for Parks Operation staff and security for their equipment.

