

**PROFESSIONAL SERVICES
SUPPLEMENTAL AGREEMENT # 3
FOR
WEISS LANE WIDENING (TR2403)**

**STATE OF TEXAS §
 §
COUNTY OF TRAVIS §**

This Supplemental Agreement No. 3 to a contract for Professional Services is made by and between the City of Pflugerville, Texas ("City") and K Friese & Associates, LLC. ("Consultant"). City and Consultant may be referred to herein singularly as "Party" or collectively as the "Parties."

WHEREAS, the City and Consultant executed an Agreement for Professional Services ("Agreement") on the 22nd day of January, 2025 for the WEISS LANE WIDENING (TR2403) project ("Project") in the amount of \$1,056,688.70; and

WHEREAS, the City and Consultant entered into a Supplemental Agreement #1 for Professional Services in the amount of \$49,272.00 on the 5th day of May, 2025 to comply with changes in state law relating to contracts of municipalities; and

WHEREAS, the City and Consultant entered into a Supplemental Agreement #2 for Professional Services in the amount of \$10,030.00 on the 30th day of October, 2025 to add Phase 1 Bridge Feasibility Study scope items to the Agreement; and

WHEREAS, the City and Consultant desire to enter into a Supplemental Agreement #3 for Professional Services for the Project in the amount of \$277,371.64, on the 12th day of May, 2026 to add additional scope for bridge design, roadway design, drainage design, retaining walls, geotechnical engineering, utility coordination, SUE, survey, and joint bidding of utilities to the Agreement; and

WHEREAS, it has become necessary to amend the Agreement to modify the provisions for the Scope of Services, Work Schedule, and Compensation; and

WHEREAS, it is necessary for the City to amend its agreements from time to time to comply with changes in state law relating to contracts of municipalities.

NOW, THEREFORE, premises considered, the City and the Consultant agree that said Agreement is amended as follows:

I.

Article III. Scope of Services and Exhibit A, shall be amended as set forth in the attached addendum to Exhibit A.

Article III. Work Schedule and Exhibit B, shall be amended as set forth in the attached addendum to Exhibit B.

Article IV. Compensation to Consultant and Exhibit C (Fee Schedule), shall be amended by increasing by \$277,371.64 the amount payable under the Agreement for a total of \$1,393,362.34, as shown by the attached Addendum to Exhibit C (Fee Schedule).


2.

Except as amended hereby and as previously amended as indicated above, the terms of the Agreement shall remain unchanged and in full force and effect.

EXECUTED and **AGREED** to as of the dates indicated below.

**CITY OF
PFLUGERVILLE**

CONSULTANT

<hr/>	
(Signature)	(Signature)
Printed Name: <u>Sereniah Breland</u>	Printed Name: <u>Chris Flageolle</u>
Title: <u>City Manager</u>	Title: <u>VP-Transportation</u>
Date: _____	Date: <u>04-30-2026</u>

APPROVED AS TO FORM:



Charles E. Zech
Special Counsel

DENTON NAVARRO RODRIGUEZ BERNAL SANTEE & ZECH, P.C.

EXHIBIT A
SCOPE OF SERVICES & COMPENSATION
WEISS LN WIDENING

PSSA#3 ADDITIONAL WORK SUMMARY

K Friese + Associates, LLC. (KFA) will provide the necessary additional engineering and technical services for the widening of Weiss Lane from E. Pecan Street to Pleasanton Parkway, approximately 0.61 miles. KFA will provide the necessary engineering and technical services for the development of the plans, specifications and estimates (PS&E) and contract for construction.

KFA will perform additional design services related to the design and plan production for this project in accordance with the latest available City of Pflugerville requirements, including the Engineering Design Guidelines & Construction Standards, the latest Unified Development Code, and City of Pflugerville Standard Details and Specifications. Special details and specifications will be developed for the projects when necessary.

This PSSA#3 will also convert the existing contract from Time & Materials to a Lump Sum billing upon approval of this PSSA with the exception of Subsurface Utility Engineering (SUE) and Utility Coordination which will remain Time and Materials up to the combined maximum shown in this PSSA of \$91,133.64. The remainder of all tasks included in the original contract and the additional fee in this PSSA of \$186,238.00 will be billed and paid as lump sum.

KFA shall include the additional tasks and deliverables more fully described in the following task descriptions.

PROJECT MANAGEMENT

1. Overall Project Management – KFA will conduct internal meetings, schedule work, and coordinate on an ongoing basis with the City and project team. This task includes coordinating with subconsultants on field work, work products, and deliverables. This task also includes designation of PM in writing, monthly invoicing and progress reports, monthly meetings with the City, and monthly updates to the project schedule. The anticipated duration is an additional six (6) months for design.
2. City of Pflugerville Meetings – Meetings will be conducted with the City as shown in the project schedule and after each submittal to discuss the City's comments. Ten (10) meetings have been assumed and outlined below. Time is included in this task for meeting preparation and documentation of the meetings. For review meetings, KFA will prepare agendas which will be distributed in advance of each meeting and minutes will be distributed following each meeting.
 - Six (6) additional monthly progress meeting with the City, One (1) attendee
 - Four (4) additional Design Meetings with the City, One (1) attendee

EXHIBIT A
SCOPE OF SERVICES & COMPENSATION
WEISS LN WIDENING

PHASE I – SCHEMATIC (30%) PHASE

1. **Design Survey and Right-of-Way Mapping:** Surveying and Mapping, LLC (SAM) proposes to provide the following: additional back corner searches that have been pending because of ROE delays, parcel exhibits, and setting new monuments for the proposed ROW.
2. **Subsurface Utility Engineering (SUE):** The Rios Group (TRG) will provide SUE services, while attending the project kick off meeting and design meetings, as needed.
 - a. Quality Level (QL) “B” SUE Services: TRG will perform QL “B” SUE Services for the project.
 - TRG will perform records research and acquire available existing utility records within the project limits. This will include contacting the applicable One Call agency and associated utility owners/municipalities to request records and reviewing available utility record information obtained.
 - TRG will attempt to designate the following utilities within this area: potable water, reclaimed water, chilled water, natural gas/crude oil/refined product pipelines, communication duct banks, fiber optic, cable television, telephone, traffic signal cables, street lighting, TxDOT CTMS cables, and electric.
 - Wastewater and storm drain facilities will be inverted at manholes and will be depicted as QLC information.
 - TRG will attempt to designate utility service lines, however, because these lines are often non-conductive and not shown on records TRG cannot guarantee all service lines will be included in the final deliverables.
 - TRG will prepare an overhead utility inventory.
 - The following facilities/items are specifically excluded from the scope of work of this proposal: private service lines, irrigation lines, detailed vault investigations.
 - TRG will attempt to provide Electronic Depth readings calculated by TRG’s geophysical equipment. If Electronic Depth readings can be obtained, they will be provided every 50 feet. However, due to the inconsistency with Electronic Depth readings, TRG cannot guarantee the accuracy of the information. Data will be provided for informational purposes only.
 - b. QL “A” SUE Services: (10) QLA SUE test holes at location that will be provided by the Client following a review of the QLB SUE information. TRG has made the following assumptions related to test hole excavations on this project:
 - Test holes will be excavated using vacuum excavation equipment.

EXHIBIT A
SCOPE OF SERVICES & COMPENSATION
WEISS LN WIDENING

- All test holes will be accessible to truck/trailer-mounted vacuum excavation equipment. Any improvements required to access test hole locations (clearing, grading, mat installation, etc.) will be provided by others at no cost to TRG).
 - Right-of-Way (ROW) permits from the City of Pflugerville (City) will be required. TRG will obtain all required City permits and ensure that coordination and compliance with the City is provided.
 - Traffic control measures will be required. TRG will acquire the services of a qualified Maintenance-of-Traffic (MOT) Subcontractor and ensure that adequate traffic control is provided.
 - Pavement coring/repair will be required at three (3) locations. TRG can core pavement up to a depth of 12 inches. Asphalt surfaces will be repaired with an asphalt cold patch, and concrete cores will be epoxied in place, flush with the surrounding surface.
 - The following items are specifically excluded from this scope of work: flowable fill for backfill of test holes, full-section pavement repair (including sidewalks)
 - Due to the risk of damage, TRG will not attempt to probe or excavate test holes on AC water lines unless approval is obtained from the owner in advance.
 - Excavation in rock, or to a depth greater than 18 feet, is considered beyond the scope of this proposal.
 - The survey of SUE field markings and test hole locations is also included in this scope of work.
 - Asphalt surfaces will be repaired with an asphalt cold patch, and concrete cores will be epoxied in place, flush with the surrounding surface. TRG assumes that flowable fill will not be required when backfilling test holes and that full-section pavement repair (including sidewalks) will not be required to restore the original pavement surface. If requested, these services can be provided at an additional cost.
 - TRG can core pavement up to a depth of 12 inches. Asphalt surfaces will be repaired with an asphalt cold patch, and concrete cores will be epoxied in place, flush with the surrounding surface.
 - The following items are specifically excluded from this scope of work: flowable fill for backfill of test holes, full-section pavement repair (including sidewalks)
3. **Geotechnical Services:** Raba Kistner Consulting, Inc. (RKI) scope of services will be to determine subsurface soil conditions at the site and bridge foundation, retaining wall recommendations and construction guidelines for the widening of Weiss Lane, including a new crossing at Weiss Lane, approximately 800 ft southwest of its intersection with Pleasanton Parkway. The design 18-kip Equivalent Single Axle Loads (ESALs) will be determined by either street classification or anticipated average daily traffic (ADT) counts for a 20 and 30 year design life for flexible pavements in general accordance with the City of Pflugerville Engineering Design Manual & Construction Standards, and/or estimated traffic as provided by the City of Pflugerville. Attend project kick off meeting and design meetings, as needed.

EXHIBIT A
SCOPE OF SERVICES & COMPENSATION
WEISS LN WIDENING

- a. Field Coordination and Exploration:
- Develop soil-boring layout (4 additional borings) for the City of Pflugerville's approval prior to mobilization.
 - Submit a Right-of-Way Application permit for the street, which is required for drilling and cut excavations within the street right-of-way. The document will include a cover letter describing the nature of our work, the number of borings and their targeted depths, proposed boring locations vetted against existing utilities (offsets), a traffic and/or pedestrian control plan in conformance with the latest TMUTCD, and a restoration plan (backfill requirements for the boreholes) in accordance with Chapter 96.51 and 96.52. A call to Texas 811 utility locate submission will also be included. We understand not all utilities subscribe to Texas 811; therefore, water line utilities will have their own utility locate submission for final clearance.
 - The boring locations will be located in the field utilizing tape and right-angle measurements from existing benchmarks or using a recreational grade Global Positioning System (GPS) device. Our scope of services does not include surveying of the boring locations. However, RKI will provide field coordinates of all boring locations, which are expected to be surveyed by others. RKI can also be available to restake the borings for surveying if necessary.
 - Subsurface soil conditions will be explored by drilling two (2) additional bridge borings at the creek crossing to depths of 70 ft below the existing ground surface utilizing a truck mounted drilling rig, and two (2) retaining wall borings. Samples will be taken on 2 ft intervals to a depth of 10 ft, then every 5 ft below that. The above fieldwork will be supervised by a graduate engineer or geologist familiar with local geology and TxDOT standards for drilling and sampling. We have assumed that the borings can be drilled during the day, right of entry is provided, and that all boring locations will be accessible to a truck-mounted drill rig.
 - Bulk samples will also be taken for sieve analyses for use in scour analyses to be performed by others.
 - Perform dynamic cone penetrometer (DCP) testing at each boring location to evaluate subgrade stiffness.
- b. Laboratory Testing: The testing program may include but not limited to moisture content tests, Atterberg Limits (plasticity tests), unconfined compression, sulfate testing, particle size analysis tests, and lime series. The type and number of tests will be based on subsurface conditions encountered in the field.
- c. Geotechnical Engineering Report (GER):
- Geotechnical Investigation prepared by a professional geotechnical engineer with 15+ years of experience conducting bridge and roadway projects within Travis County.
 - The following items will be included in the geotechnical report: soil-boring locations, boring logs, plan of borings, subsurface exploration procedures, field and laboratory test results, description of surface and subsurface conditions, groundwater conditions, estimated PVR calculations, and drilled pier axial and uplift capacity curves.

EXHIBIT A
SCOPE OF SERVICES & COMPENSATION
WEISS LN WIDENING

- In addition, RKI will compare the analyzed design to that which was presented in as-built plans from a previous phase. If the recommended section provided in the GER varies from that in the as-built, a comparison of the sections will be presented.
 - A Draft Bridge and Retaining Wall Report will be submitted for the design team comments and review. Comments will be incorporated in the final deliverable that will be reproduced in one electronic copy for distribution.
- a. Deliverables
- i. Geotechnical Report (with 4 additional borings)
 - ii. Utility Conflict Matrix

II – DESIGN PHASE

1. Additional Plan Preparation: KFA and associated subconsultants will develop a set of construction plans (22-in x 36-in Full Size for construction, with 11-in x 17-in Half Size submitted at design stages). The anticipated additional plan sheets are summarized below.
 - a. Roadway (6 sheets):
 - Retaining Wall Sheets 1" = 50' at two (2) per sheet
 - b. Bridge (7 sheets)
 - Bridge Layout
 - Quantities and Bearing Seat Elevations
 - Abutment No. 3
 - Abutment No. 4
 - Girder Layout
 - Concrete Girder Span
 - Non-Standard Girder Design
2. Utility Coordination: The Rios Group will perform coordination services for this project to assist in facilitating the accommodation of existing utilities.
 - a. Provide and update a Utility Conflict Matrix, Contact List and CAD exhibit depicting the utility conflicts
 - b. Coordinate with the design team and project owner to provide status reports, schedules and information concerning the utilities and the effect on the project. This includes progress meetings both online and in person as necessary.
 - c. Coordinate with the dry utility owners within the project scope. Hold group and individual meetings as needed, provide plans and exhibits, keep utility owners updated on the schedules, plan changes, ROW and movement of the project specifics.
 - d. Review of utility plans versus the roadway plans to assure any relocation design will not affect the roadway improvements.

EXHIBIT A
SCOPE OF SERVICES & COMPENSATION
WEISS LN WIDENING

ASSUMPTIONS MADE FOR THIS PROPOSAL

1. The fee has been developed assuming the project proceeds in a continuous manner with no significant work stoppage.
2. This scope of work assumes local funding only. Any studies, field visits, or other activities requested by CLIENT or other parties that are not included in this proposal are excluded from this scope of work.
3. No utility relocation design is included as part of this work including water and wastewater.
4. Permit review fees, including TDLR and Travis County, will be paid by the City and are not included in this proposal.
5. It is assumed that the existing bridge over Wilbarger Creek will remain but will be extended to have one (1) additional span added to it.
6. The proposal does not include land acquisition costs. The schedule assumed that land acquisition will not require eminent domain.
7. It is assumed a PCN or Individual Permit will not be required for any project for the USACE.
8. The project is in the City limits and does not require Travis County permitting, review, and approval.
9. It is assumed that water quality and detention will not be required for the proposed roadway construction.
10. The Design team will utilize the pavement section provided by the City in the Weiss Ln as-builts.
11. The City is moving away from installation of permanent landscape irrigation systems in lieu of installation of drought tolerant landscape plant materials. As such, landscape watering will still be required for a period of time to ensure plant material establishment. It is assumed that the Contractor will be responsible for regular watering throughout the plant material establishment period.

EXCLUSIONS MADE FOR THIS PROPOSAL

1. Traffic Study, Traffic Signal Warrants are excluded from the scope.
2. Construction Materials Testing and inspection is not included in this scope.
3. Traffic Signal design is not included with this proposal.
4. Right-of-way and easement acquisition are not included in scope and will be obtained by City.
5. Geotechnical Pavement Investigation and Design are excluded from this report.
6. Median Landscape Irrigation Plans, Details and Specifications are excluded from this proposal.

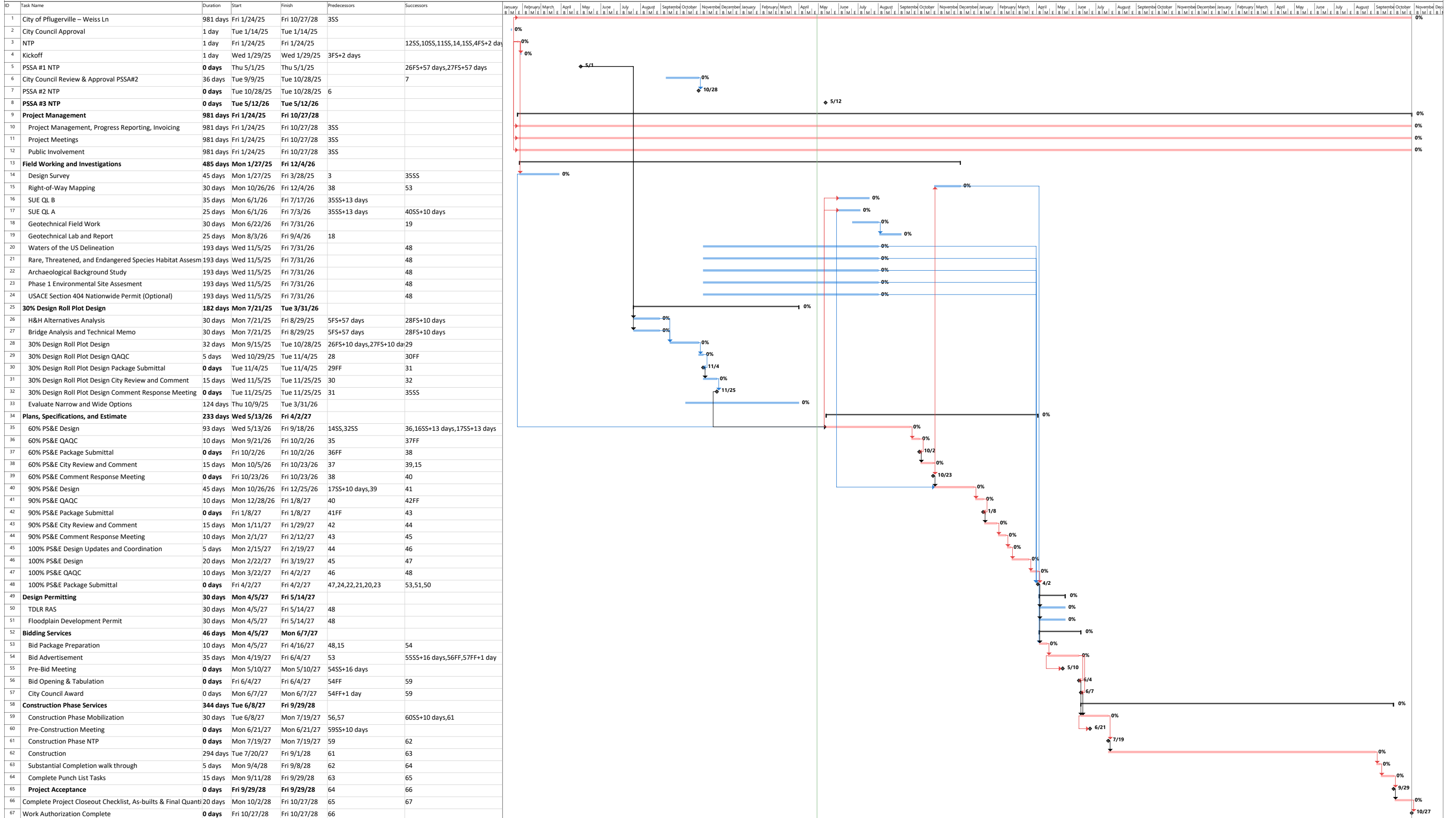
EXHIBIT A
SCOPE OF SERVICES & COMPENSATION
WEISS LN WIDENING

ADDITIONAL SERVICES

1. The City and KFA may agree that KFA shall perform services outside the Scope of Services described in this proposal. KFA will submit a written estimate of fees, based on standard rates indicated on the “Compensation Rate Schedule” included as part of the professional Services Agreement contract. KFA will obtain the City’s authorization prior to initiating any Additional Services.

Exhibit B

City of Pflugerville
Weiss Ln
Project Design Schedule
PSSA #3



**City of Pflugerville - Weiss Lane
PSSA#3 Project Budget**

TASK	K Friese + Associates, LLC.	HW Lochner	Surveying & Mapping, LLC	Raba Kistner Consultants, Inc	Statetech Engineering, LLC	The Rios Group	Total Labor Cost
PROJECT MANAGEMENT						PM SUBTOTAL =	\$ 35,114.00
1. Overall Project Management (6 additional Months & Joint Bid Coord.)	\$ 15,648.00	\$ -	\$ -	\$ -	\$ -	\$ -	\$ 15,648.00
2. City of Pflugerville Progress Meetings (6 additional Meetings)	\$ 7,254.00	\$ -	\$ -	\$ -	\$ -	\$ -	\$ 7,254.00
2. City of Pflugerville Design Meetings (4 additional Meetings)	\$ 12,212.00	\$ -	\$ -	\$ -	\$ -	\$ -	\$ 12,212.00
2. City of Pflugerville City Council Meetings (3 Meetings)	\$ -	\$ -	\$ -	\$ -	\$ -	\$ -	\$ -
3. Public Involvement (2 Meetings)	\$ -	\$ -	\$ -	\$ -	\$ -	\$ -	\$ -
PHASE I - SCHEMATIC (30%) PHASE						PHASE I SUBTOTAL =	\$ 36,989.44
1. Right-of-Entry Coordination							
a. ROE 7 properties	\$ -	\$ -	\$ -	\$ -	\$ -	\$ -	\$ -
2. Design Survey & Right-of-way Services						\$ -	
a. Design Survey	\$ -	\$ -	\$ -	\$ -	\$ -	\$ -	\$ -
b. Right of Way Services (Additional Easement & Parcel activity)	\$ -	\$ -	\$ 14,850.00	\$ -	\$ -	\$ -	\$ 14,850.00
3. Subsurface Utility Engineering (added as new scope)						\$ 6,976.79	\$ 6,976.79
a. QL "B" Services (added as new scope)	\$ -	\$ -	\$ -	\$ -	\$ -	\$ 4,652.65	\$ 4,652.65
b. QL "A" Services	\$ -	\$ -	\$ -	\$ -	\$ -	\$ -	\$ -
4. Geotechnical Services						\$ -	\$ -
a. Field Coordination & Exploration (4 additional borings)	\$ -	\$ -	\$ -	\$ 5,168.00	\$ -	\$ -	\$ 5,168.00
b. Laboratory Assignment (4 additional borings)	\$ -	\$ -	\$ -	\$ 590.00	\$ -	\$ -	\$ 590.00
c. Geotechnical Report & Pavement Design Analysis (4 additional borings)	\$ -	\$ -	\$ -	\$ 4,752.00	\$ -	\$ -	\$ 4,752.00
5. Environmental Services						\$ -	
a. Waters of the US Delineation	\$ -	\$ -	\$ -	\$ -	\$ -	\$ -	\$ -
b. Rare, Threatened, and Endangered Species Habitat Assess	\$ -	\$ -	\$ -	\$ -	\$ -	\$ -	\$ -
c. Archaeological Background Study	\$ -	\$ -	\$ -	\$ -	\$ -	\$ -	\$ -
d. Phase I Environmental Site Assessment	\$ -	\$ -	\$ -	\$ -	\$ -	\$ -	\$ -
6. Schematic Development						\$ -	\$ -
a. Roadway Design	\$ -	\$ -	\$ -	\$ -	\$ -	\$ -	\$ -
b. Hydrologic & Hydraulic Analysis	\$ -	\$ -	\$ -	\$ -	\$ -	\$ -	\$ -
i. Hydrologic Updates	\$ -	\$ -	\$ -	\$ -	\$ -	\$ -	\$ -
ii. Hydraulic Updates	\$ -	\$ -	\$ -	\$ -	\$ -	\$ -	\$ -
iii. Bridge Feasibility Study	\$ -	\$ -	\$ -	\$ -	\$ -	\$ -	\$ -
a. HEC-RAS model to confirm existing bridge and lengthening remains with parallel NB bridge	\$ -	\$ -	\$ -	\$ -	\$ -	\$ -	\$ -
b. Bridge Approach Memo (model)	\$ -	\$ -	\$ -	\$ -	\$ -	\$ -	\$ -
c. Drainage Design	\$ -	\$ -	\$ -	\$ -	\$ -	\$ -	\$ -
d. Water Quality Design	\$ -	\$ -	\$ -	\$ -	\$ -	\$ -	\$ -
e. Bridge Design	\$ -	\$ -	\$ -	\$ -	\$ -	\$ -	\$ -
i. Existing Bridge Lengthening Feasibility	\$ -	\$ -	\$ -	\$ -	\$ -	\$ -	\$ -
f. Deliverables	\$ -	\$ -	\$ -	\$ -	\$ -	\$ -	\$ -
i. 30% Design Roll Plot	\$ -	\$ -	\$ -	\$ -	\$ -	\$ -	\$ -
ii. 30% Design Cross Sections	\$ -	\$ -	\$ -	\$ -	\$ -	\$ -	\$ -
iii. Drainage Technical Memorandum	\$ -	\$ -	\$ -	\$ -	\$ -	\$ -	\$ -
iv. Preliminary Opinion of Probable Construction Cost	\$ -	\$ -	\$ -	\$ -	\$ -	\$ -	\$ -
PHASE II - DESIGN PHASE						PHASE II SUBTOTAL =	\$ 141,526.20
1. Plan Preparation						\$ -	\$ -
a. General						\$ -	\$ -
Title Sheet	\$ -	\$ -	\$ -	\$ -	\$ -	\$ -	\$ -
Index of Sheets	\$ -	\$ -	\$ -	\$ -	\$ -	\$ -	\$ -
General Notes	\$ -	\$ -	\$ -	\$ -	\$ -	\$ -	\$ -
Quantity Summary Sheets	\$ -	\$ -	\$ -	\$ -	\$ -	\$ -	\$ -
Horizontal Alignment Data	\$ -	\$ -	\$ -	\$ -	\$ -	\$ -	\$ -
Survey Control Sheet	\$ -	\$ -	\$ -	\$ -	\$ -	\$ -	\$ -
Project Layout Sheet	\$ -	\$ -	\$ -	\$ -	\$ -	\$ -	\$ -
b. Roadway						\$ -	\$ -
Typical Sections	\$ -	\$ -	\$ -	\$ -	\$ -	\$ -	\$ -
Removal Sheets	\$ 2,198.00	\$ -	\$ -	\$ -	\$ -	\$ -	\$ 2,198.00
Roadway Plan & Profiles	\$ 13,560.00	\$ -	\$ -	\$ -	\$ -	\$ -	\$ 13,560.00
Driveway Plan & Profile Sheets	\$ -	\$ -	\$ -	\$ -	\$ -	\$ -	\$ -

City of Pflugerville - Weiss Lane
PSSA#3 Project Budget

TASK	K Friese + Associates, LLC.	HW Lochner	Surveying & Mapping, LLC	Raba Kistner Consultants, Inc	Statetech Engineering, LLC	The Rios Group	Total Labor Cost
Retaining Walls (added as new scope)	\$ -	\$ 18,840.00	\$ -	\$ -	\$ -	\$ -	\$ 18,840.00
Cross Section Sheets (50-ft Intervals)	\$ -	\$ -	\$ -	\$ -	\$ -	\$ -	\$ -
Roadway Details	\$ -	\$ -	\$ -	\$ -	\$ -	\$ -	\$ -
Roadway Standards	\$ -	\$ -	\$ -	\$ -	\$ -	\$ -	\$ -
c. Drainage							\$ -
Offsite Drainage Area Maps	\$ -	\$ -	\$ -	\$ -	\$ -	\$ -	\$ -
Hydrologic Calculations	\$ -	\$ -	\$ -	\$ -	\$ -	\$ -	\$ -
Bridge Hydraulic Calculations	\$ -	\$ -	\$ -	\$ -	\$ -	\$ -	\$ -
Onsite Drainage Area Maps	\$ 6,422.00	\$ -	\$ -	\$ -	\$ -	\$ -	\$ 6,422.00
Storm Sewer Hydraulic Calculations	\$ 3,038.00	\$ -	\$ -	\$ -	\$ -	\$ -	\$ 3,038.00
Storm Sewer Plan & Profile Sheets	\$ 10,904.00	\$ -	\$ -	\$ -	\$ -	\$ -	\$ 10,904.00
Drainage Details	\$ -	\$ -	\$ -	\$ -	\$ -	\$ -	\$ -
Detention Pond Layouts	\$ -	\$ -	\$ -	\$ -	\$ -	\$ -	\$ -
Detention Pond Details	\$ -	\$ -	\$ -	\$ -	\$ -	\$ -	\$ -
Water Quality Pond Layouts	\$ -	\$ -	\$ -	\$ -	\$ -	\$ -	\$ -
Water Quality Pond Details	\$ -	\$ -	\$ -	\$ -	\$ -	\$ -	\$ -
Drainage Standard	\$ -	\$ -	\$ -	\$ -	\$ -	\$ -	\$ -
d. Bridge (1 additional bridge)							\$ -
Bridge Layouts	\$ -	\$ 14,270.00	\$ -	\$ -	\$ -	\$ -	\$ 14,270.00
Quantities and Bearing Seat Elevations	\$ -	\$ 2,880.00	\$ -	\$ -	\$ -	\$ -	\$ 2,880.00
Abutment No. 3	\$ -	\$ 8,460.00	\$ -	\$ -	\$ -	\$ -	\$ 8,460.00
Abutment No. 4	\$ -	\$ 3,920.00	\$ -	\$ -	\$ -	\$ -	\$ 3,920.00
Girder Layout	\$ -	\$ 2,590.00	\$ -	\$ -	\$ -	\$ -	\$ 2,590.00
Concrete Girder Span	\$ -	\$ 6,870.00	\$ -	\$ -	\$ -	\$ -	\$ 6,870.00
Non-Standard Girder Design	\$ -	\$ 10,240.00	\$ -	\$ -	\$ -	\$ -	\$ 10,240.00
e. Traffic Control							\$ -
Traffic Control Plan Narrative	\$ -	\$ -	\$ -	\$ -	\$ -	\$ -	\$ -
Traffic Control Plan Layout Sheets	\$ -	\$ -	\$ -	\$ -	\$ -	\$ -	\$ -
Traffic Control Plan Standards	\$ -	\$ -	\$ -	\$ -	\$ -	\$ -	\$ -
f. Signing and Pavement Marking							\$ -
Signing and Pavement Marking Layout Sheets	\$ -	\$ -	\$ -	\$ -	\$ -	\$ -	\$ -
Signing and Pavement Marking Standards	\$ -	\$ -	\$ -	\$ -	\$ -	\$ -	\$ -
g. Erosion Control							\$ -
Stormwater Pollution Prevention Plan	\$ -	\$ -	\$ -	\$ -	\$ -	\$ -	\$ -
Erosion Control Plan Sheets	\$ -	\$ -	\$ -	\$ -	\$ -	\$ -	\$ -
Erosion Control Standards	\$ -	\$ -	\$ -	\$ -	\$ -	\$ -	\$ -
h. Illumination							\$ -
Illumination Plan Sheets	\$ -	\$ -	\$ -	\$ -	\$ -	\$ -	\$ -
Illumination Circuit Diagram	\$ -	\$ -	\$ -	\$ -	\$ -	\$ -	\$ -
Illumination Standard Details	\$ -	\$ -	\$ -	\$ -	\$ -	\$ -	\$ -
i. Landscape Architecture							\$ -
Landscape Key Map	\$ -	\$ -	\$ -	\$ -	\$ -	\$ -	\$ -
Landscape Material and Layout Sheets	\$ -	\$ -	\$ -	\$ -	\$ -	\$ -	\$ -
Landscape Planting Sheets	\$ -	\$ -	\$ -	\$ -	\$ -	\$ -	\$ -
Landscape Master Plant List, Details and Specifications	\$ -	\$ -	\$ -	\$ -	\$ -	\$ -	\$ -
2. Contract Documents	\$ -	\$ -	\$ -	\$ -	\$ -	\$ -	\$ -
3. Opinion of Probable Construction Cost	\$ -	\$ -	\$ -	\$ -	\$ -	\$ -	\$ -
4. Design and Construction Schedule	\$ -	\$ -	\$ -	\$ -	\$ -	\$ -	\$ -
5. Utility Coordination (added as new scope)	\$ -	\$ -	\$ -	\$ -	\$ -	\$ 37,334.20	\$ 37,334.20
6. Design Progress Submittals	\$ -	\$ -	\$ -	\$ -	\$ -	\$ -	\$ -
7. Permitting							\$ -
a. TCEQ NPDES	\$ -	\$ -	\$ -	\$ -	\$ -	\$ -	\$ -
b. TDLR Review Submittal	\$ -	\$ -	\$ -	\$ -	\$ -	\$ -	\$ -
c. Floodplain Development	\$ -	\$ -	\$ -	\$ -	\$ -	\$ -	\$ -
d. FEMA CLOMR/LOMR	\$ -	\$ -	\$ -	\$ -	\$ -	\$ -	\$ -
e. City Construction Permit	\$ -	\$ -	\$ -	\$ -	\$ -	\$ -	\$ -
PHASE III - BID PHASE SERVICES (TIME & MATERIALS)						PHASE III SUBTOTAL =	\$ -

**City of Pflugerville - Weiss Lane
PSSA#3 Project Budget**

TASK	K Friese + Associates, LLC.	HW Lochner	Surveying & Mapping, LLC	Raba Kistner Consultants, Inc	Statetech Engineering, LLC	The Rios Group	Total Labor Cost
1. Bid and Award Phase Services							\$ -
a. Bid Solicitation	\$ -	\$ -	\$ -	\$ -	\$ -	\$ -	\$ -
b. Pre-Bid Conference (2 meetings)	\$ -	\$ -	\$ -	\$ -	\$ -	\$ -	\$ -
c. Addenda Preparation (3 addendas)	\$ -	\$ -	\$ -	\$ -	\$ -	\$ -	\$ -
d. Bid Opening and Review (1 meeting)	\$ -	\$ -	\$ -	\$ -	\$ -	\$ -	\$ -
e. Contract Award	\$ -	\$ -	\$ -	\$ -	\$ -	\$ -	\$ -
f. Conforming Documents	\$ -	\$ -	\$ -	\$ -	\$ -	\$ -	\$ -
PHASE IV - CONSTRUCTION PHASE SERVICES (TIME & MATERIALS)						PHASE IV SUBTOTAL =	\$ -
1. Construction Phase Services							
a. Pre-Construction Conference (1 meeting)	\$ -	\$ -	\$ -	\$ -	\$ -	\$ -	\$ -
b. Progress Meetings and Site Visits (40 meetings/visits)	\$ -	\$ -	\$ -	\$ -	\$ -	\$ -	\$ -
c. Submittal Reviews (30 reviews)	\$ -	\$ -	\$ -	\$ -	\$ -	\$ -	\$ -
d. RFI Response (50 responses)	\$ -	\$ -	\$ -	\$ -	\$ -	\$ -	\$ -
e. Preparation of Change Orders (4 change orders)	\$ -	\$ -	\$ -	\$ -	\$ -	\$ -	\$ -
f. Contract Closeout	\$ -	\$ -	\$ -	\$ -	\$ -	\$ -	\$ -
g. Record Drawings	\$ -	\$ -	\$ -	\$ -	\$ -	\$ -	\$ -
LUMP SUM LABOR COST	\$ 71,236.00	\$ 68,070.00	\$ 14,850.00	\$ 10,510.00	\$ -		\$ 164,666.00
LUMP SUM EXPENSES	\$ -	\$ -	\$ -	\$ 21,572.00	\$ -		\$ 21,572.00
TIME & MATERIALS LABOR COST					\$ -	\$ 48,963.64	\$ 48,963.64
TIME & MATERIALS EXPENSES					\$ -	\$ 42,170.00	\$ 42,170.00
TOTAL LUMP SUM COST	\$ 71,236.00	\$ 68,070.00	\$ 14,850.00	\$ 32,082.00	\$ -	\$ -	\$ 186,238.00
TOTAL TIME & MATERIALS COST	\$ -	\$ -	\$ -	\$ -	\$ -	\$ 91,133.64	\$ 91,133.64
TOTAL PSSA#3 COST	\$ 71,236.00	\$ 68,070.00	\$ 14,850.00	\$ 32,082.00	\$ -	\$ 91,133.64	\$ 277,371.64

City of Pflugerville - Weiss Lane
PSSA#3 Project Budget

TASK	Hourly Rate:	SHEETS/ UNITS	PRINCIPAL \$ 336.00	PROJECT MANAGER \$268.00	SENIOR ENGINEER \$210.00	ENGINEER \$179.00	EIT \$142.00	SEN. ENGR. TECH. \$189.00	SEN. GIS TECH. \$168.00	ADMIN \$95.00	Sub Total Hours	KFA Labor Cost
K Friese + Associates, LLC.												
PROJECT MANAGEMENT												\$ 35,114.00
1. Overall Project Management (6 additional Months & Joint Bid Coord.)				24	18	24				12	78	\$ 15,648.00
2. City of Pflugerville Progress Meetings (6 additional Meetings)				12	6	6	12				36	\$ 7,254.00
2. City of Pflugerville Design Meetings (4 additional Meetings)				20		24	18				62	\$ 12,212.00
2. City of Pflugerville City Council Meetings (3 Meetings)											0	\$ -
3. Public Involvement (2 Meetings)											0	\$ -
PHASE I - SCHEMATIC (30%) PHASE												\$ -
PHASE I SUBTOTAL =												\$ -
1. Right-of-Entry Coordination											0	\$ -
a. ROE 7 properties											0	\$ -
2. Design Survey & Right-of-way Services											0	\$ -
a. Design Survey											0.0	\$ -
b. Right of Way Services (Additional Easement & Parcel activity)											0.0	\$ -
3. Subsurface Utility Engineering (added as new scope)												\$ -
a. QL "B" Services (added as new scope)											0	\$ -
b. QL "A" Services											0	\$ -
4. Geotechnical Services												\$ -
a. Field Coordination & Exploration (4 additional borings)											0	\$ -
b. Laboratory Assignment (4 additional borings)											0	\$ -
c. Geotechnical Report & Pavement Design Analysis (4 additional borings)											0	\$ -
5. Environmental Services												\$ -
a. Waters of the US Delineation											0	\$ -
b. Rare, Threatened, and Endangered Species Habitat Assess											0	\$ -
c. Archaeological Background Study											0	\$ -
d. Phase I Environmental Site Assessment											0	\$ -
6. Schematic Development												\$ -
a. Roadway Design											0	\$ -
b. Hydrologic & Hydraulic Analysis												\$ -
i. Hydrologic Updates											0	\$ -
ii. Hydraulic Updates											0	\$ -
iii. Bridge Feasibility Study											0	\$ -
a. HEC-RAS model to confirm existing bridge and lengthening remains with parallel NB bridge											0	\$ -
b. Bridge Approach Memo (model)											0	\$ -
c. Drainage Design											0	\$ -
d. Water Quality Design											0	\$ -
e. Bridge Design											0	\$ -
i. Existing Bridge Evaluation											0	\$ -
f. Deliverables												\$ -
i. 30% Design Roll Plot											0	\$ -
ii. 30% Design Cross Sections											0	\$ -
iii. Drainage Technical Memorandum											0	\$ -
iv. Preliminary Opinion of Probable Construction Cost											0	\$ -
PHASE II - DESIGN PHASE												\$ 36,122.00
PHASE II SUBTOTAL =												\$ 36,122.00
1. Plan Preparation												\$ -
a. General												\$ -
Title Sheet											0	\$ -
Index of Sheets											0	\$ -
General Notes											0	\$ -
Quantity Summary Sheets											0	\$ -
Horizontal Alignment Data											0	\$ -
Survey Control Sheet											0	\$ -
Project Layout Sheet											0	\$ -
b. Roadway												\$ -
Typical Sections											0	\$ -
Removal Sheets				2		4	4	2			12	\$ 2,198.00
Roadway Plan & Profiles				4	8	16	24	24			76	\$ 13,560.00
Driveway Plan & Profile Sheets											0	\$ -
Retaining Walls (added as new scope)												\$ -
Cross Section Sheets (50-ft Intervals)											0	\$ -
Roadway Details											0	\$ -
Roadway Standards											0	\$ -
c. Drainage												\$ -
Offsite Drainage Area Maps											0	\$ -
Hydrologic Calculations											0	\$ -
Bridge Hydraulic Calculations											0	\$ -
Onsite Drainage Area Maps				2	4	6	12	12			36	\$ 6,422.00
Storm Sewer Hydraulic Calculations				2	4	4	4	2			16	\$ 3,038.00

City of Pflugerville - Weiss Lane
PSSA#3 Project Budget

Storm Sewer Plan & Profile Sheets			2	4	12	36	12			66	\$ 10,904.00
Drainage Details										0	\$ -
Detention Pond Layouts										0	\$ -
Detention Pond Details										0	\$ -
Water Quality Pond Layouts										0	\$ -
Water Quality Pond Details										0	\$ -
Drainage Standard										0	\$ -
d. Bridge (1 additional bridge)											
Bridge Layouts										0	\$ -
Quantities and Bearing Seat Elevations										0	\$ -
Abutment No. 3										0	\$ -
Abutment No. 4										0	\$ -
Girder Layout										0	\$ -
Concrete Girder Span										0	\$ -
Non-Standard Girder Design										0	\$ -
e. Traffic Control											
Illumination Circuit Diagram										0	\$ -
Illumination Standard Details										0	\$ -
i. Landscape Architecture											
Landscape Key Map										0	\$ -
Landscape Material and Layout Sheets										0	\$ -
Landscape Planting Sheets										0	\$ -
Landscape Master Plant List, Details and Specifications										0	\$ -
2. Contract Documents										0	\$ -
PHASE III - BID PHASE SERVICES (TIME & MATERIALS)										PHASE III SUBTOTAL =	\$ -
1. Bid and Award Phase Services											
a. Bid Solicitation										0	\$ -
b. Pre-Bid Conference (2 meetings)										0	\$ -
c. Addenda Preparation (3 addendas)										0	\$ -
d. Bid Opening and Review (1 meeting)										0	\$ -
e. Contract Award										0	\$ -
f. Conforming Documents										0	\$ -
PHASE IV - CONSTRUCTION PHASE SERVICES (TIME & MATERIALS)										PHASE IV SUBTOTAL =	\$ -
1. Construction Phase Services											
a. Pre-Construction Conference (1 meeting)										0	\$ -
b. Progress Meetings and Site Visits (40 meetings/visits)										0	\$ -
c. Submittal Reviews (30 reviews)										0	\$ -
d. RFI Response (50 responses)										0	\$ -
e. Preparation of Change Orders (4 change orders)										0	\$ -
f. Contract Closeout										0	\$ -
g. Record Drawings										0	\$ -
TOTALS HOURS:	0										
			0	68	44	96	110	52	0	12	Row Total = 382
LABOR COST:		\$ -	\$ 18,224	\$ 9,240	\$ 17,184	\$ 15,620	\$ 9,828	\$ -	\$ 1,140	Column Total = 382	
		0.0%	17.8%	11.5%	25.1%	28.8%	13.6%	0.0%	3.1%		\$ 71,236.00
											\$ 71,236.00

TIME AND MATERIALS EXPENSES:					
Travel:					
Mileage	0 miles		\$0.67	\$0.00	
Copies:					
Reproduction	0 copies		\$0.20	\$0.00	
Media (mylar)	0 sheets		\$1.50	\$0.00	
11x17 plans (B/W)	0 sheets		\$0.20	\$0.00	
22x34 plans (B/W)	0 sheets		\$0.40	\$0.00	
Misc Expenses:					
TDLR Registration Fee	each		\$175.00	\$0.00	
Express delivery	each		\$30.00	\$0.00	
TOTAL EXPENSES:				\$ -	
TOTAL KFA COST:				\$ 71,236.00	

**City of Pflugerville - Weiss Lane
Project Budget**

TASK	Hourly Rate:	SHEETS/ UNITS	PRINCIPAL	PROJECT	SENIOR	SENIOR	SENIOR	ENGINEER	EIT	SR. ENGR. TECH.	ADMIN	Sub Total Hours	HWL Labor Cost
			\$ 331.00	\$280.00	\$210.00	\$260.00	\$265.00						
HW Lochner													
PROJECT MANAGEMENT													
1. Overall Project Management (6 additional Months & Joint Bid Coord.)													\$ -
2. City of Pflugerville Progress Meetings (6 additional Meetings)													\$ -
2. City of Pflugerville Design Meetings (4 additional Meetings)													\$ -
2. City of Pflugerville City Council Meetings (3 Meetings)													\$ -
3. Public Involvement (2 Meetings)													\$ -
PHASE I - SCHEMATIC (30%) PHASE													\$ -
2. Design Survey & Right-of-way Services													\$ -
a. Design Survey													\$ -
b. Right of Way Services (Additional Easement & Parcel activity)													\$ -
3. Subsurface Utility Engineering (added as new scope)													\$ -
a. QL "B" Services (added as new scope)													\$ -
b. QL "A" Services													\$ -
4. Geotechnical Services													\$ -
a. Field Coordination & Exploration (4 additional borings)													\$ -
b. Laboratory Assignment (4 additional borings)													\$ -
c. Geotechnical Report & Pavement Design Analysis (4 additional borings)													\$ -
5. Environmental Services													\$ -
a. Waters of the US Delineation													\$ -
b. Rare, Threatened, and Endangered Species Habitat Assess													\$ -
c. Archaeological Background Study													\$ -
d. Phase I Environmental Site Assessment													\$ -
6. Schematic Development													\$ -
a. Roadway Design													\$ -
b. Hydrologic & Hydraulic Analysis													\$ -
i. Hydrologic Updates													\$ -
ii. Hydraulic Updates													\$ -
iii. Bridge Feasibility Study													\$ -
a. HEC-RAS model to confirm existing bridge and lengthening remains with parallel NB bridge													\$ -
b. Bridge Approach Memo (model)													\$ -
c. Drainage Design													\$ -
d. Water Quality Design													\$ -
e. Bridge Design													\$ -
i. Existing Bridge Evaluation													\$ -
f. Deliverables													\$ -
i. 30% Design Roll Plot													\$ -
ii. 30% Design Cross Sections													\$ -
iii. Drainage Technical Memorandum													\$ -
iv. Preliminary Opinion of Probable Construction Cost													\$ -
PHASE II - DESIGN PHASE													\$ 68,070.00
1. Plan Preparation													\$ -
a. General													\$ -
Title Sheet													\$ -
Index of Sheets													\$ -
General Notes													\$ -
Quantity Summary Sheets													\$ -
Horizontal Alignment Data													\$ -
Survey Control Sheet													\$ -
Project Layout Sheet													\$ -
b. Roadway													\$ -
Typical Sections													\$ -
Removal Sheets													\$ -
Roadway Plan & Profiles													\$ -
Driveway Plan & Profile Sheets													\$ -
Retaining Walls (added as new scope)				2			24		32	40			\$ 18,840.00
Cross Section Sheets (50-ft Intervals)													\$ -
Roadway Details													\$ -
Roadway Standards													\$ -

**City of Pflugerville - Weiss Lane
Project Budget**

TASK	Hourly Rate:	SHEETS/ UNITS	PRINCIPAL	PROJECT	SENIOR	SENIOR	SENIOR	ENGINEER	EIT	SR. ENGR.	ADMIN	Sub Total Hours	HWL Labor Cost
			\$ 331.00	\$280.00	\$210.00	\$260.00	\$265.00	\$195.00	\$145.00	\$171.00	\$110.00		
HW Lochner													Hours
c. Drainage													
Offsite Drainage Area Maps													\$ -
Hydrologic Calculations													\$ -
Bridge Hydraulic Calculations													\$ -
Onsite Drainage Area Maps													\$ -
Storm Sewer Hydraulic Calculations													\$ -
Storm Sewer Plan & Profile Sheets													\$ -
Drainage Details													\$ -
Detention Pond Layouts													\$ -
Detention Pond Details													\$ -
Water Quality Pond Layouts													\$ -
Water Quality Pond Details													\$ -
Drainage Standard													\$ -
d. Bridge (1 additional bridge)													
Bridge Layouts					8	26		18	16			68	\$ 14,270.00
Quantities and Bearing Seat Elevations					2	2		4	8			16	\$ 2,880.00
Abutment No. 3					2	16		8	16			42	\$ 8,460.00
Abutment No. 4					2	6		4	8			20	\$ 3,920.00
Girder Layout					2	2		4	6			14	\$ 2,590.00
Concrete Girder Span					4	12		6	12			34	\$ 6,870.00
Non-Standard Girder Design					8	12		16	16			52	\$ 10,240.00
e. Traffic Control													
Traffic Control Plan Narrative													\$ -
Traffic Control Plan Layout Sheets													\$ -
Traffic Control Plan Standards													\$ -
f. Signing and Pavement Marking													
Signing and Pavement Marking Layout Sheets													\$ -
Signing and Pavement Marking Standards													\$ -
g. Erosion Control													
Stormwater Pollution Prevention Plan													\$ -
Erosion Control Plan Sheets													\$ -
Erosion Control Standards													\$ -
h. Illumination													
Illumination Plan Sheets													\$ -
Illumination Circuit Diagram													\$ -
Illumination Standard Details													\$ -
i. Landscape Architecture													
Landscape Key Map												0	\$ -
Landscape Material and Layout Sheets												0	\$ -
Landscape Planting Sheets												0	\$ -
Landscape Master Plant List, Details and Specifications												0	\$ -
2. Contract Documents													\$ -
3. Opinion of Probable Construction Cost													\$ -
4. Design and Construction Schedule													\$ -
5. Utility Coordination (added as new scope)													\$ -
6. Design Progress Submittals													\$ -
7. Permitting													\$ -
a. TCEQ NPDES													\$ -
b. TDLR Review Submittal													\$ -
c. Floodplain Development													\$ -
d. FEMA CLOMR/LOMR													\$ -
e. City Construction Permit													\$ -
PHASE III - BID PHASE SERVICES (TIME & MATERIALS)													\$ -
1. Bid and Award Phase Services													
a. Bid Solicitation													\$ -
b. Pre-Bid Conference (2 meetings)													\$ -
c. Addenda Preparation (3 addendas)													\$ -
d. Bid Opening and Review (1 meeting)													\$ -

**City of Pflugerville - Weiss Lane
Project Budget**

TASK	Hourly Rate:	SHEETS/ UNITS	PRINCIPAL	PROJECT	SENIOR	SENIOR	SENIOR	ENGINEER	EIT	SR. ENGR. TECH.	ADMIN	Sub Total Hours	HWL Labor Cost
			\$ 331.00	\$280.00	\$210.00	\$260.00	\$265.00						
HW Lochner													
e. Contract Award													\$ -
f. Conforming Documents													\$ -
PHASE IV - CONSTRUCTION PHASE SERVICES (TIME & MATERIALS)													\$ -
1. Construction Phase Services													
a. Pre-Construction Conference (1 meeting)													\$ -
b. Progress Meetings and Site Visits (40 meetings/visits)													\$ -
c. Submittal Reviews (30 reviews)													\$ -
d. RFI Response (50 responses)													\$ -
e. Preparation of Change Orders (4 change orders)													\$ -
f. Contract Closeout													\$ -
g. Record Drawings													\$ -
TOTALS	0											Row Total = 344	
HOURS:			0	2	28	100	0	92	122	0	0	Column Total = 246	
LABOR COST:			\$ -	\$ 560	\$ 5,880	\$ 26,000	\$ -	\$ 17,940	\$ 17,690	\$ -	\$ -		\$ 68,070.00
			0.0%	0.8%	11.4%	40.7%		37.4%	49.6%	0.0%	0.0%		\$ 68,070.00

TIME AND MATERIALS EXPENSES:					
Travel:					
Mileage					
Copies:					
Reproduction					
Media (mylar)					
Misc Expenses:					
Express delivery					
TOTAL EXPENSES:					
TOTAL HWL COST:					\$ 68,070

**City of Pflugerville - Weiss Lane
Project Budget**

TASK	Hourly Rate:	SHEETS/ UNITS	SENIOR	AERIAL	PROJECT	STAFF	PROJECT	SENIOR OFFICE	OFFICE	TWO PERSON	FIELD	PHOTOGRAMMETRI	ACQUISITION /	LIDAR	Sub Total Hours	SAM Labor Cost
			PROJECT MANAGER \$250.00	PROJECT MANAGER \$210.00	MANAGER \$205.00	SURVEYOR \$190.00	LEAD \$140.00	TECHNICIAN \$135.00	TECHNICIAN II \$120.00	FIELD CREW \$185.00	COORDINATOR \$140.00	ST / PROJECT LEAD /SENSOR OPERATOR \$135.00	TRIANGULATION TECHNICIAN \$120.00	PHOTOGRAMMETRY \$105.00		
Surveying & Mapping, LLC																
PROJECT MANAGEMENT																
1. Overall Project Management (6 additional Months & Joint Bid Co		12													0	\$ -
2. City of Pflugerville Progress Meetings (6 additional Meetings)		4													0	\$ -
2. City of Pflugerville Design Meetings (4 additional Meetings)		4													0	\$ -
2. City of Pflugerville City Council Meetings (3 Meetings)		4													0	\$ -
3. Public Involvement (2 Meetings)		2													0	\$ -
PHASE I - SCHEMATIC (30%) PHASE															PHASE I SUBTOTAL =	\$ 14,850.00
2. Design Survey & Right-of-way Services															0	\$ -
a. Design Survey															0.0	\$ -
b. Right of Way Services (Additional Easement & Parcel activity)			1.0		8	12		8	16	40	2				87.0	\$ 14,850.00
3. Subsurface Utility Engineering (added as new scope)															0	\$ -
a. QL "B" Services (added as new scope)															0	\$ -
b. QL "A" Services															0	\$ -
4. Geotechnical Services															0	\$ -
a. Field Coordination & Exploration (4 additional borings)															0	\$ -
b. Laboratory Assignment (4 additional borings)															0	\$ -
c. Geotechnical Report & Pavement Design Analysis (4 additional borings)															0	\$ -
5. Environmental Services															0	\$ -
a. Waters of the US Delineation															0	\$ -
b. Rare, Threatened, and Endangered Species Habitat Assess															0	\$ -
c. Archaeological Background Study															0	\$ -
d. Phase I Environmental Site Assessment															0	\$ -
6. Schematic Development															0	\$ -
a. Roadway Design															0	\$ -
b. Hydrologic & Hydraulic Analysis															0	\$ -
i. Hydrologic Updates															0	\$ -
ii. Hydraulic Updates															0	\$ -
c. Drainage Design															0	\$ -
d. Water Quality Design															0	\$ -
e. Bridge Design															0	\$ -
i. Existing Bridge Evaluation															0	\$ -
f. Deliverables															0	\$ -
i. 30% Design Roll Plot															0	\$ -
ii. 30% Design Cross Sections															0	\$ -
iii. Drainage Technical Memorandum															0	\$ -
iv. Preliminary Opinion of Probable Construction Cost															0	\$ -
PHASE II - DESIGN PHASE															PHASE II SUBTOTAL =	\$ -
1. Plan Preparation																
a. General																
Title Sheet		1													0	\$ -
Index of Sheets		1													0	\$ -
General Notes		5													0	\$ -
Quantity Summary Sheets		6													0	\$ -
Horizontal Alignment Data		1													0	\$ -
Survey Control Sheet		1													0	\$ -
Project Layout Sheet		1													0	\$ -
b. Roadway																
Typical Sections		2													0	\$ -
Removal Sheets		3													0	\$ -
Roadway Plan & Profiles		6													0	\$ -
Driveway Plan & Profile Sheets		5													0	\$ -
Retaining Walls (added as new scope)																
Cross Section Sheets (50-ft Intervals)		20													0	\$ -
Roadway Details		6													0	\$ -
Roadway Standards		6													0	\$ -
c. Drainage																
Offsite Drainage Area Maps		1													0	\$ -
Hydrologic Calculations		1													0	\$ -
Bridge Hydraulic Calculations		1													0	\$ -
Onsite Drainage Area Maps		6													0	\$ -
Storm Sewer Hydraulic Calculations		1													0	\$ -
Storm Sewer Plan & Profile Sheets		6													0	\$ -
Drainage Details		4													0	\$ -
Drainage Standard		20													0	\$ -
d. Bridge (1 additional bridge)																
Bridge Layouts																
Quantities and Bearing Seat Elevations																
Abutment No. 3																
Abutment No. 4																
Bridge Layouts		1													0	\$ -
Quantities and Bearing Seat Elevations		1													0	\$ -

**City of Pflugerville - Weiss Lane
Project Budget**

TASK	Hourly Rate:	SHEETS/ UNITS	SENIOR PROJECT MANAGER \$250.00	AERIAL PROJECT MANAGER \$210.00	PROJECT MANAGER \$205.00	STAFF SURVEYOR \$190.00	PROJECT LEAD \$140.00	SENIOR OFFICE TECHNICIAN \$135.00	OFFICE TECHNICIAN II \$120.00	TWO PERSON FIELD CREW \$185.00	FIELD COORDINATOR \$140.00	PHOTOGRAMMETRI ST / PROJECT LEAD /SENSOR OPERATOR \$135.00	ACQUISITION / CALIBRATION / AERIAL TRIANGULATION TECHNICIAN \$120.00	LIDAR PHOTOGRAMMETRY \$105.00	Sub Total Hours	SAM Labor Cost	
Surveying & Mapping, LLC																	
Abutment No. 3		1													0	\$ -	
Abutment No. 4		1													0	\$ -	
Girder Layout		1													0	\$ -	
Concrete Girder Span		1													0	\$ -	
Non-Standard Girder Design		1													0	\$ -	
e. Traffic Control																	
Traffic Control Plan Narrative		1													0	\$ -	
Traffic Control Plan Layout Sheets		6													0	\$ -	
Traffic Control Plan Standards		5													0	\$ -	
f. Signing and Pavement Marking																	
Signing and Pavement Marking Layout Sheets		6													0	\$ -	
Signing and Pavement Marking Standards		6													0	\$ -	
g. Erosion Control																	
Stormwater Pollution Prevention Plan		1													0	\$ -	
Erosion Control Plan Sheets		6													0	\$ -	
Erosion Control Standards		5													0	\$ -	
h. Illumination																	
Illumination Plan Sheets															0	\$ -	
Illumination Circuit Diagram															0	\$ -	
Illumination Standard Details															0	\$ -	
i. Landscape Architecture																	
Landscape Key Map																	
Landscape Material and Layout Sheets																	
Landscape Planting Sheets																	
Landscape Master Plant List, Details and Specifications																	
2. Contract Documents															0	\$ -	
3. Opinion of Probable Construction Cost															0	\$ -	
4. Design and Construction Schedule															0	\$ -	
5. Utility Coordination (added as new scope)															0	\$ -	
6. Design Progress Submittals															0	\$ -	
7. Permitting																	
a. TCEQ NPDES															0	\$ -	
b. TDLR Review Submittal															0	\$ -	
c. Floodplain Development															0	\$ -	
d. FEMA CLOMR/LOMR															0	\$ -	
e. City Construction Permit															0	\$ -	
PHASE III - BID PHASE SERVICES (TIME & MATERIALS)															PHASE III SUBTOTAL =		\$ -
1. Bid and Award Phase Services																	
a. Bid Solicitation		1													0	\$ -	
b. Pre-Bid Conference (2 meetings)		1													0	\$ -	
c. Addenda Preparation (3 addendas)		1													0	\$ -	
d. Bid Opening and Review (1 meeting)		1													0	\$ -	
e. Contract Award		1													0	\$ -	
f. Conforming Documents		1													0	\$ -	
PHASE IV - CONSTRUCTION PHASE SERVICES (TIME & MATERIALS)															PHASE III SUBTOTAL =		\$ -
1. Construction Phase Services																	
a. Pre-Construction Conference (1 meeting)		1													0	\$ -	
b. Progress Meetings and Site Visits (40 meetings/visits)		36													0	\$ -	
c. Submittal Reviews (30 reviews)		30													0	\$ -	
d. RFI Response (50 responses)		10													0	\$ -	
e. Preparation of Change Orders (4 change orders)		2													0	\$ -	
f. Contract Closeout		1													0	\$ -	
g. Record Drawings		1													0	\$ -	
TOTALS HOURS:		147													Row Total = 87		
LABOR COST:			\$ 250	\$ -	\$ 1,640	\$ 2,280	\$ -	\$ 1,080	\$ 1,920	\$ 7,400	\$ 280	\$ -	\$ -	\$ -	Column Total = 87		\$ 14,850.00
			1.1%	0.0%	9.2%	13.8%	0.0%	9.2%	18.4%	46.0%	2.3%	0.0%	0.0%	0.0%			\$ 14,850.00

TIME AND MATERIALS EXPENSES:							
Travel:							
Mileage				miles		\$0.67	\$0.00
GPS Receiver						\$25.00	\$0.00
SX-10						\$35.00	\$0.00
Fixed Wing Twin Engine						\$1,300.00	\$0.00
Riegel VQ 156011						\$1,300.00	\$0.00
GPS Receive (Unmanned)						\$100.00	\$0.00

**City of Pflugerville - Weiss Lane
Project Budget**

TASK	Hourly Rate:	SHEETS/ UNITS	SENIOR PROJECT MANAGER	AERIAL PROJECT MANAGER	PROJECT MANAGER	STAFF SURVEYOR	PROJECT LEAD	SENIOR OFFICE TECHNICIAN	OFFICE TECHNICIAN II	TWO PERSON FIELD CREW	FIELD COORDINATOR	PHOTOGRAMMETRI ST / PROJECT LEAD /SENSOR OPERATOR	ACQUISITION / CALIBRATION / AERIAL TRIANGULATION TECHNICIAN	LIDAR PHOTOGRAMMETRY	Sub Total Hours	SAM Labor Cost
Surveying & Mapping, LLC			\$250.00	\$210.00	\$205.00	\$190.00	\$140.00	\$135.00	\$120.00	\$185.00	\$140.00	\$135.00	\$120.00	\$105.00		
TOTAL EXPENSES:									\$ -							
TOTAL SAM COST:									\$ 14,850.00							

**City of Pflugerville - Weiss Lane
Project Budget**

TASK	SHEETS/ UNITS	SENIOR	EP&P	SNR	PROJECT	ENV PM	PI, ARCH	PROJECT	ENV ENG	EIT	GIS	PROJ ARCH	FIELD	ENV	ENV	SR. ENGR/ LOGGER	GIS / CADD TECH	BUSINESS MANAGER	CLERICAL	ADMIN	Sub Total Hours	RKI Labor Cost
		ENGINEER	DIRECTOR	GEOLOGIST	MANAGER			ENGINEER			ANALYST		COORD.	SCIENTIST II	SCIENTIST							
Raba Kistner Consultants, Inc	Hourly Rate:	\$ 204.00	\$190.00	\$190.00	\$182.00	\$175.00	\$175.00	\$160.00	\$135.00	\$135.00	\$122.00	\$120.00	\$115.00	\$109.00	\$101.00	\$100.00	\$110.00	\$92.00	\$76.00	\$70.00		
PROJECT MANAGEMENT																					0	
1. Overall Project Management (6 additional Months & Joint Bid Coord.)																					0	\$ -
2. City of Pflugerville Progress Meetings (6 additional Meetings)																					0	\$ -
2. City of Pflugerville Design Meetings (4 additional Meetings)																					0	\$ -
2. City of Pflugerville City Council Meetings (3 Meetings)																					0	\$ -
3. Public Involvement (2 Meetings)																					0	\$ -
PHASE I - SCHEMATIC (30%) PHASE																						
2. Design Survey & Right-of-way Services																						
a. Design Survey																					0	\$ -
b. Right of Way Services (Additional Easement & Parcel activity)																					0	\$ -
3. Subsurface Utility Engineering (added as new scope)																						
a. QL "B" Services (added as new scope)																					0	\$ -
b. QL "A" Services																					0	\$ -
4. Geotechnical Services																						
a. Field Coordination & Exploration (4 additional borings)																					45	\$ 5,168.00
b. Laboratory Assignment (4 additional borings)																					4	\$ 590.00
c. Geotechnical Report & Pavement Design Analysis (4 additional borings)																					33	\$ 4,752.00
5. Environmental Services																						
a. Waters of the US Delineation																					0	\$ -
ii. 30% Design Cross Sections																					0	\$ -
iii. Drainage Technical Memorandum																					0	\$ -
iv. Preliminary Opinion of Probable Construction Cost																					0	\$ -
PHASE II - DESIGN PHASE																						
TOTALS HOURS:																					4	
LABOR COST:																					\$ 816	\$ -
																					4.9%	0.0%
																					\$ -	\$ -
																					0.0%	0.0%
																					\$ 1,274	\$ -
																					8.5%	0.0%
																					\$ -	\$ -
																					0.0%	0.0%
																					\$ 1,600	\$ -
																					12.2%	0.0%
																					\$ -	\$ 2,430
																					0.0%	22.0%
																					\$ -	\$ -
																					0.0%	0.0%
																					\$ 1,150	\$ -
																					12.2%	0.0%
																					\$ -	\$ -
																					0.0%	0.0%
																					\$ 2,700	\$ 330
																					32.9%	3.7%
																					\$ -	\$ -
																					0.0%	0.0%
																					\$ -	\$ 210
																					0.0%	3.7%
TOTALS																						
LABOR COST:																					\$ 816	\$ -
																					4.9%	0.0%
																					\$ -	\$ -
																					0.0%	0.0%
																					\$ 1,274	\$ -
																					8.5%	0.0%
																					\$ -	\$ 2,430
																					0.0%	22.0%
																					\$ -	\$ -
																					0.0%	0.0%
																					\$ 1,150	\$ -
																					12.2%	0.0%
																					\$ -	\$ 330
																					32.9%	3.7%
																					\$ -	\$ 210
																					0.0%	3.7%
Row Total = 82.0																						
Column Total = 82.0																						
																					\$ 10,510.00	\$ 10,510.00
																					\$ 10,510.00	\$ 10,510.00

TIME AND MATERIALS EXPENSES:																									
2 Additional Bridge Borings (70 ft)																									
FIELD OPERATIONS																									
Mobilization of Drill Rig																						\$600.00	\$600.00		
3" Thin-Wall Continuous Sampling																						100	ft	\$28.00	\$2,800.00
NX Coring																						70	ft	\$40.00	\$2,800.00
Bentonite Backfill																						170	ft	\$7.00	\$1,190.00
Pavement Core and Patch																						0	each	\$150.00	\$0.00
Driller Cleanup																						4	hrs	\$250.00	\$1,000.00
Traffic Control Services																						3	days	\$2,400.00	\$7,200.00
Private SUE																						1	days	\$1,000.00	\$1,000.00
Hazmat Database																						1	each	\$517.50	\$517.50
Trimble Survey Grade																						1	each	\$92.00	\$92.00
Truck																						1	each	\$70.00	\$70.00
Mileage																						100	mile	\$0.67	\$67.00
Survey Supplies																						1	each	\$80.50	\$80.50
LABORATORY TESTING																									
Atterberg Limits																						12	units	\$125.00	\$1,500.00
Moisture Content																						45	units	\$15.00	\$675.00
Sieve Analysis (passing No. 4, 40, 200)																						8	units	\$120.00	\$960.00
Sulfate Testing																						0	units	\$125.00	\$0.00
Unconfined Compression (Soil)																						12	units	\$60.00	\$720.00
Unconfined Compression (Rock)																						4	units	\$75.00	\$300.00
Lime Series (Tex-121-E Part III)																						0	units	\$425.00	\$0.00
Moisture-Density Test Only																						0	units	\$350.00	\$0.00
Triaxial Compression of Disturbed Soils (Tex-117-E)																						0	units	\$2,200.00	\$0.00
TOTAL EXPENSES:																									
TOTAL RKI BASE COST:																						\$ 21,572.00			
TOTAL RKI BASE COST:																						\$ 32,082.00			

TASK	SHEETS/ UNITS	PRINCIPAL	EP&P	SNR	PROJECT	ENV PM	PI, ARCH	PROJECT	ENV ENG	EIT	GIS	PROJ ARCH	FIELD	ENV	ENV	SR. ENGR/ LOGGER	GIS / CADD TECH	BUSINESS MANAGER	CLERICAL	ADMIN	Sub Total Hours	RKI Labor Cost
		ENGINEER	DIRECTOR	GEOLOGIST	MANAGER			ENGINEER			ANALYST		COORD.	SCIENTIST II	SCIENTIST							
Raba Kistner Consultants, Inc	Hourly Rate:	\$ 220.00	\$190.00	\$190.00	\$182.00	\$175.00	\$175.00	\$160.00	\$135.00	\$135.00	\$122.00	\$120.00	\$115.00	\$112.00	\$90.00	\$100.00	\$110.00	\$90.00	\$73.00	\$70.00		
PHASE I - SCHEMATIC (30%) PHASE																					0	
5. Environmental Services																						
e. USACE Section 404 Nationwide Permit																					0	\$ -
TOTALS HOURS:																					0	
ADDITIONAL LABOR COST:																					\$ -	\$ -
																					0.0%	0.0%
																					\$ -	\$ -
																					0.0%	0.0%
																					\$ -	\$ -
																					0.0%	0.0%
																					\$ -	\$ -
																					0.0%	0.0%
TOTAL RKI ADDITIONAL COST:																						\$ -

City of Pflugerville - Weiss Lane
PSSA#2 Project Budget

TASK	Hourly Rate:	SHEETS/ UNITS	PRINCIPAL \$ 336.00	PROJECT MANAGER \$185.00	SENIOR ENGINEER \$210.00	ENGINEER \$165.00	EIT \$142.00	ENGR. TECH. \$125.00	SEN. CAD OPERATOR \$85.00	ADMIN \$95.00	Sub Total Hours	Labor STE Cost	
Statetech Engineering, LLC													
Hours													
PROJECT MANAGEMENT											PM SUBTOTAL =	\$ -	
1. Overall Project Management (6 additional Months & Joint Bid Coord.)												0	\$ -
2. City of Pflugerville Progress Meetings (6 additional Meetings)												0	\$ -
2. City of Pflugerville Design Meetings (4 additional Meetings)												0	\$ -
2. City of Pflugerville City Council Meetings (3 Meetings)												0	\$ -
3. Public Involvement (2 Meetings)												0	\$ -
PHASE I - SCHEMATIC (30%) PHASE											PHASE I SUBTOTAL =	\$ -	
1. Right-of-Entry Coordination												0	\$ -
a. ROE 7 properties												0	\$ -
2. Design Survey & Right-of-way Services												0	\$ -
a. Design Survey												0	\$ -
b. Right of Way Services (Additional Easement & Parcel activity)												0	\$ -
3. Subsurface Utility Engineering (added as new scope)												0	\$ -
a. QL "B" Services (added as new scope)												0	\$ -
b. QL "A" Services												0	\$ -
4. Geotechnical Services												0	\$ -
a. Field Coordination & Exploration (4 additional borings)												0	\$ -
b. Laboratory Assignment (4 additional borings)												0	\$ -
c. Geotechnical Report & Pavement Design Analysis (4 additional borings)												0	\$ -
5. Environmental Services												0	\$ -
a. Waters of the US Delineation												0	\$ -
b. Rare, Threatened, and Endangered Species Habitat Assess												0	\$ -
c. Archaeological Background Study												0	\$ -
d. Phase I Environmental Site Assessment												0	\$ -
6. Schematic Development												0	\$ -
a. Roadway Design												0	\$ -
b. Hydrologic & Hydraulic Analysis												0	\$ -
i. Hydrologic Updates												0	\$ -
ii. Hydraulic Updates												0	\$ -
iii. Bridge Feasibility Study												0	\$ -
a. HEC-RAS model to confirm existing bridge and lengthening remains with parallel NB bridge												0	\$ -
b. Bridge Approach Memo (model)												0	\$ -
c. Drainage Design												0	\$ -
d. Water Quality Design												0	\$ -
e. Bridge Design												0	\$ -
i. Existing Bridge Lengthening Feasibility												0	\$ -
f. Deliverables												0	\$ -
i. 30% Design Roll Plot												0	\$ -
ii. 30% Design Cross Sections												0	\$ -
iii. Drainage Technical Memorandum												0	\$ -
iv. Preliminary Opinion of Probable Construction Cost												0	\$ -
PHASE II - DESIGN PHASE											PHASE II SUBTOTAL =	\$ -	
1. Plan Preparation												0	\$ -
a. General												0	\$ -
Title Sheet												0	\$ -
Index of Sheets												0	\$ -
General Notes												0	\$ -
Quantity Summary Sheets												0	\$ -
Horizontal Alignment Data												0	\$ -
Survey Control Sheet												0	\$ -
Project Layout Sheet												0	\$ -
b. Roadway												0	\$ -
Typical Sections												0	\$ -
Removal Sheets												0	\$ -
Roadway Plan & Profiles												0	\$ -
Driveway Plan & Profile Sheets												0	\$ -

City of Pflugerville - Weiss Lane
PSSA#2 Project Budget

d. Bid Opening and Review (1 meeting)										0	\$ -
e. Contract Award										0	\$ -
f. Conforming Documents										0	\$ -
PHASE IV - CONSTRUCTION PHASE SERVICES (TIME & MATERIALS)										PHASE IV SUBTOTAL =	
1. Construction Phase Services											
a. Pre-Construction Conference (1 meeting)										0	\$ -
b. Progress Meetings and Site Visits (40 meetings/visits)										0	\$ -
c. Submittal Reviews (30 reviews)										0	\$ -
d. RFI Response (50 responses)										0	\$ -
e. Preparation of Change Orders (4 change orders)										0	\$ -
f. Contract Closeout										0	\$ -
g. Record Drawings										0	\$ -
TOTALS HOURS:	0										
		0	0	0	0	0	0	0	0	0	
LABOR COST:		\$ -	\$ -	\$ -	\$ -	\$ -	\$ -	\$ -	\$ -	\$ -	\$ -
		#DIV/0!	#DIV/0!	#DIV/0!	#DIV/0!	#DIV/0!	#DIV/0!	#DIV/0!	#DIV/0!	#DIV/0!	\$ -
											\$ -

TIME AND MATERIALS EXPENSES:					
Travel:					
Mileage		miles	\$0.67	\$0.00	
Copies:					
Reproduction		copies	\$0.20	\$0.00	
Media (mylar)		sheets	\$1.50	\$0.00	
Misc Expenses:					
Express delivery		each	\$30.00	\$0.00	
TOTAL EXPENSES:				\$ -	
TOTAL STE COST:				\$ -	

**City of Pflugerville - Weiss Lane
Project Budget**

TASK	Hourly Rate:	SHEETS/ UNITS	SR PROJECT	PROJECT	ASSISTANT	CADD TECH	FIELD	SR. UTILITY	UTILITY	ADMIN	Sub Total Hours	TRG Labor Cost	
			MANAGER	MANAGER	PROJECT MANAGER		MANAGER	MANAGER	COORD.				COORD.
			\$ 194.19	\$159.78	\$112.02	\$80.81	\$125.75	\$187.26	\$122.76	\$90.72			
The Rios Group													
												Hours	
PROJECT MANAGEMENT											PM SUBTOTAL =	\$ -	
1. Overall Project Management (6 additional Months & Joint Bid Coord.)												0	\$ -
2. City of Pflugerville Progress Meetings (6 additional Meetings)												0	\$ -
2. City of Pflugerville Design Meetings (4 additional Meetings)												0	\$ -
2. City of Pflugerville City Council Meetings (3 Meetings)												0	\$ -
3. Public Involvement (2 Meetings)												0	\$ -
PHASE I - SCHEMATIC (30%) PHASE											PHASE I SUBTOTAL =	\$ 11,629.44	
1. Right-of-Entry Coordination												0	\$ -
a. ROE 7 properties												0	\$ -
2. Design Survey & Right-of-way Services												0	\$ -
a. Design Survey												0	\$ -
b. Right of Way Services (Additional Easement & Parcel activity)												0	\$ -
3. Subsurface Utility Engineering (added as new scope)												65	\$ 6,976.79
a. QL "B" Services (added as new scope)												41	\$ 4,652.65
b. QL "A" Services												0	\$ -
4. Geotechnical Services												0	\$ -
a. Field Coordination & Exploration (4 additional borings)												0	\$ -
b. Laboratory Assignment (4 additional borings)												0	\$ -
c. Geotechnical Report & Pavement Design Analysis (4 additional borings)												0	\$ -
5. Environmental Services												0	\$ -
a. Waters of the US Delineation												0	\$ -
b. Rare, Threatened, and Endangered Species Habitat Assess												0	\$ -
c. Archaeological Background Study												0	\$ -
d. Phase I Environmental Site Assessment												0	\$ -
6. Schematic Development												0	\$ -
a. Roadway Design												0	\$ -
b. Hydrologic & Hydraulic Analysis												0	\$ -
a. Roadway Design												0	\$ -
b. Hydrologic & Hydraulic Analysis												0	\$ -
i. Hydrologic Updates												0	\$ -
ii. Hydraulic Updates												0	\$ -
iii. Bridge Feasibility Study												0	\$ -
a. HEC-RAS model to confirm existing bridge and lengthening remains with parallel NB bridge												0	\$ -
b. Bridge Approach Memo (model)												0	\$ -
c. Drainage Design												0	\$ -
d. Water Quality Design												0	\$ -
e. Bridge Design												0.0	\$ -
i. Existing Bridge Lengthening Feasibility												0.0	\$ -
f. Deliverables												0.0	\$ -
i. 30% Design Roll Plot												0	\$ -
ii. 30% Design Cross Sections												0.0	\$ -
iii. Drainage Technical Memorandum												0.0	\$ -
iv. Preliminary Opinion of Probable Construction Cost												0.0	\$ -
PHASE II - DESIGN PHASE											0	\$ 37,334.20	
1. Plan Preparation												0	\$ -
a. General												0	\$ -
Title Sheet												0	\$ -
Index of Sheets												0	\$ -
General Notes												0	\$ -
Quantity Summary Sheets												0	\$ -
Horizontal Alignment Data												0	\$ -
Survey Control Sheet												0	\$ -
Project Layout Sheet												0	\$ -
b. Roadway												0	\$ -
Typical Sections												0	\$ -
Removal Sheets												0	\$ -

**City of Pflugerville - Weiss Lane
Project Budget**

Roadway Plan & Profiles									0	\$ -
Driveway Plan & Profile Sheets									0	\$ -
Retaining Walls (added as new scope)										
Cross Section Sheets (50-ft Intervals)									0	\$ -
Roadway Details									0	\$ -
Roadway Standards									0	\$ -
c. Drainage									0	\$ -
Offsite Drainage Area Maps									0	\$ -
Hydrologic Calculations									0	\$ -
Bridge Hydraulic Calculations									0	\$ -
Onsite Drainage Area Maps									0	\$ -
Storm Sewer Hydraulic Calculations									0	\$ -
Storm Sewer Plan & Profile Sheets									0	\$ -
Drainage Details									0	\$ -
Detention Pond Layouts									0	\$ -
Detention Pond Details									0	\$ -
Water Quality Pond Layouts									0	\$ -
Water Quality Pond Details									0	\$ -
Drainage Standard									0	\$ -
d. Bridge (1 additional bridge)									0	\$ -
Bridge Layouts									0	\$ -
Quantities and Bearing Seat Elevations									0	\$ -
Abutment No. 3									0	\$ -
Abutment No. 4									0	\$ -
Girder Layout									0	\$ -
Concrete Girder Span									0	\$ -
Non-Standard Girder Design									0	\$ -
e. Traffic Control									0	\$ -
Traffic Control Plan Narrative									0	\$ -
Traffic Control Plan Layout Sheets									0	\$ -
Traffic Control Plan Standards									0	\$ -
f. Signing and Pavement Marking									0	\$ -
Signing and Pavement Marking Layout Sheets									0	\$ -
Signing and Pavement Marking Standards									0	\$ -
g. Erosion Control									0	\$ -
Stormwater Pollution Prevention Plan									0	\$ -
Erosion Control Plan Sheets									0	\$ -
Erosion Control Standards									0	\$ -
h. Illumination									0	\$ -
Illumination Plan Sheets									0	\$ -
Illumination Circuit Diagram									0	\$ -
Illumination Standard Details									0	\$ -
i. Landscape Architecture										
Landscape Key Map										
Landscape Material and Layout Sheets										
Landscape Planting Sheets										
Landscape Master Plant List, Details and Specifications										
2. Contract Documents									0	\$ -
3. Opinion of Probable Construction Cost									0	\$ -
4. Design and Construction Schedule									0	\$ -
5. Utility Coordination (added as new scope)	4	4		32		60	180		280	\$ 37,334.20
6. Design Progress Submittals									0	\$ -
7. Permitting									0	\$ -
a. TCEQ NPDES									0	\$ -
b. TDLR Review Submittal									0	\$ -
c. Floodplain Development									0	\$ -
d. FEMA CLOMR/LOMR									0	\$ -
e. City Construction Permit									0	\$ -
PHASE III - BID PHASE SERVICES (TIME & MATERIALS)										
1. Bid and Award Phase Services										
a. Bid Solicitation									0	\$ -

**City of Pflugerville - Weiss Lane
Project Budget**

b. Pre-Bid Conference (2 meetings)										0	\$ -
c. Addenda Preparation (3 addendas)										0	\$ -
d. Bid Opening and Review (1 meeting)										0	\$ -
e. Contract Award										0	\$ -
f. Conforming Documents										0	\$ -
PHASE IV - CONSTRUCTION PHASE SERVICES (TIME & MATERIALS)										0	0
1. Construction Phase Services										0	\$ -
a. Pre-Construction Conference (1 meeting)										0	\$ -
b. Progress Meetings and Site Visits (40 meetings/visits)										0	\$ -
c. Submittal Reviews (30 reviews)										0	\$ -
d. RFI Response (50 responses)										0	\$ -
e. Preparation of Change Orders (4 change orders)										0	\$ -
f. Contract Closeout										0	\$ -
g. Record Drawings										0	\$ -
TOTALS HOURS:	0										
		10	18	24	76	10	60	180	8	Row Total = 386	
										Column Total = 386	
LABOR COST:		\$ 1,942	\$ 2,876	\$ 2,688	\$ 6,142	\$ 1,258	\$ 11,236	\$ 22,097	\$ 726		\$ 48,963.64
		2.6%	4.7%	6.2%	19.7%	2.6%	15.5%	46.6%	2.1%		\$ 48,963.64

TIME AND MATERIALS EXPENSES:											
Travel:											
Mileage					miles					\$0.67	\$0.00
Copies:											
Reproduction					copies					\$0.20	\$0.00
Media (mylar)					sheets					\$1.50	\$0.00
Misc Expenses:											
Unit Rates:											
					Rate	Quantity	Unit				
QL"A" SUE Test Hole 0-5 ft					\$ 1,380.00	4	each				\$5,520.00
QL"A" SUE Test Hole 5-8 ft					\$ 1,680.00	4	each				\$6,720.00
QL"A" SUE Test Hole 8-13 ft					\$ 2,100.00	2	each				\$4,200.00
QL"A" SUE Test Hole 13-20 ft					\$ 2,700.00	0	each				\$0.00
QL"A" SUE Test Hole Over 20 ft					\$ 3,200.00	0	each				\$0.00
Pavement Coring					\$ 390.00	3	each				\$1,170.00
One Designating Person					\$ 168.00	40	hour				\$6,720.00
Two Person Designating Person					\$ 262.00	20	hour				\$5,240.00
Traffic Control (Intersection)					\$ 1,500.00	2	day				\$3,000.00
Survey (RPLS)					\$ 2,600.00	3.5	day				\$9,100.00
ROW Permit					\$ 500.00	1	each				\$500.00
TOTAL EXPENSES:											\$ 42,170.00
TOTAL TRG COST											\$ 91,133.64