

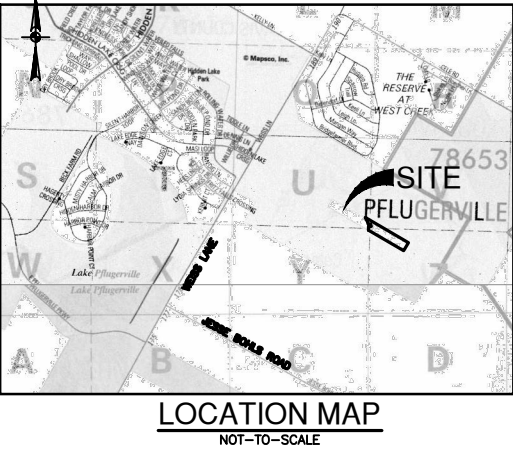
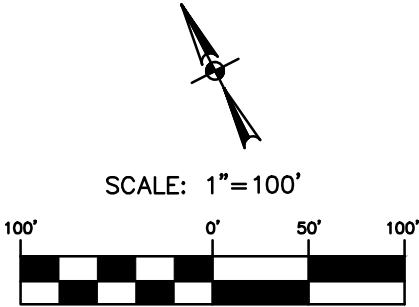
NOTES:

- THE BEARINGS ARE BASED ON THE NORTH AMERICAN DATUM OF 1983 (CORS 1996), FROM THE TEXAS COORDINATE SYSTEM ESTABLISHED FOR THE CENTRAL ZONE:
- TCAD PARCEL NO. 271707
- CITY GRID: T37
- ADJOINERS ARE FOR INFORMATIONAL PURPOSES ONLY.
- THIS EXHIBIT WAS PRODUCED WITHOUT BENEFIT OF A TITLE COMMITMENT, THEREFORE ALL ENCUMBRANCES MAY NOT BE SHOWN.

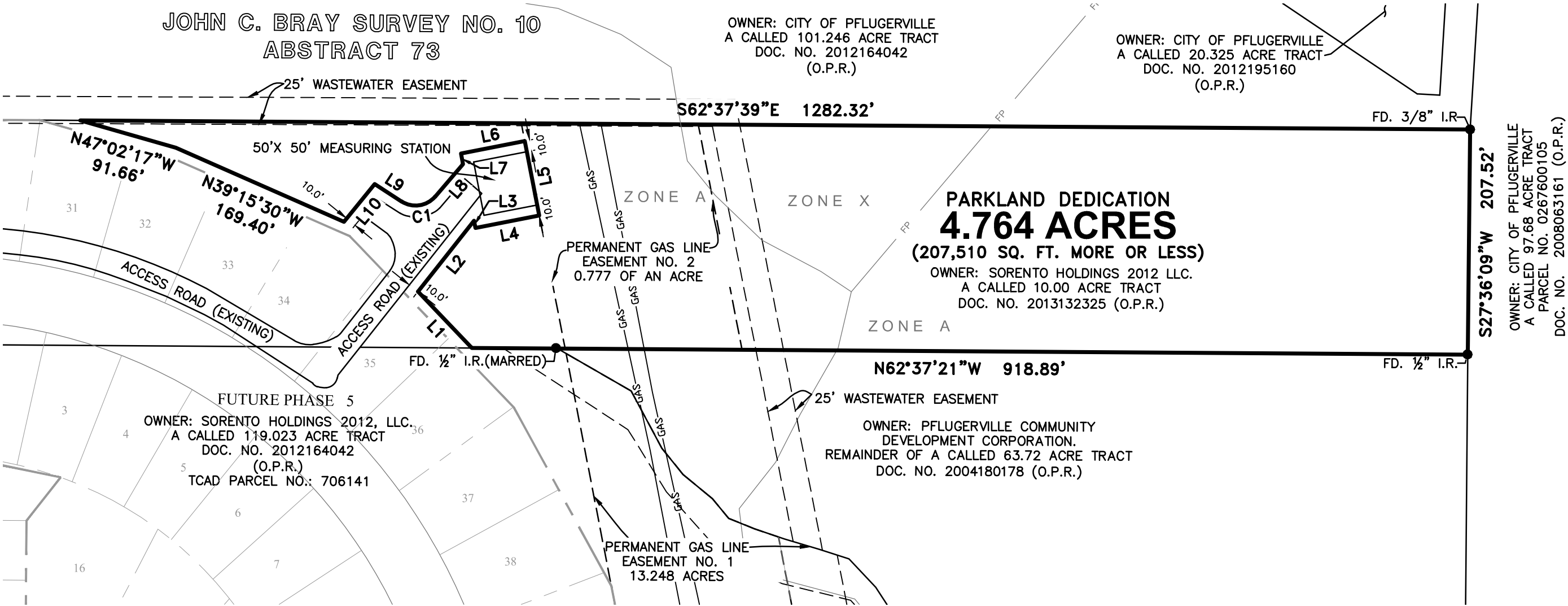
LEGEND:

DR DEED RECORDS OF TRAVIS COUNTY, TEXAS
OPR OFFICIAL PUBLIC RECORDS OF TRAVIS COUNTY, TEXAS
DPR DEED AND PLAT RECORDS OF TRAVIS COUNTY, TEXAS
FD FOUND
I.R. IRON ROD

LINE TABLE		
LINE	BEARING	LENGTH
L1	N16°45'44"W	71.96'
L2	N65°24'33"E	83.33'
L3	S15°59'00"W	6.76'
L4	S74°01'00"E	60.00'
L5	N15°59'00"E	70.00'
L6	N74°01'00"W	60.00'
L7	S15°59'00"W	10.03'
L8	S67°37'19"W	39.54'
L9	N30°04'21"W	29.65'
L10	S66°13'17"W	44.87'



CURVE TABLE					
CURVE	RADIUS	DELTA	CHORD BEARING	CHORD	LENGTH
C1	23.71'	82°18'20"	N71°13'31"W	31.20'	34.06'



PARKLAND DEDICATION EXHIBIT

4.764 ACRES OUT OF A CALLED
10.00 ACRE TRACT
DOC. NO. 2013132325 (O.P.R.)

PAPE-DAWSON
ENGINEERS

7800 SHOAL CREEK BLVD. | AUSTIN, TEXAS 78757 | PHONE: 512.654.8711
SUITE 220 WEST | FAX: 512.538.8867
TEXAS BOARD OF PROFESSIONAL ENGINEERS, FIRM REGISTRATION # 470
TEXAS BOARD OF PROFESSIONAL LAND SURVEYORS, FIRM REGISTRATION # 10286-00
Copyright © 2014 Pape-Dawson Engineers, Inc. All Rights Reserved.

JOB NO. 50703-50
DATE JULY 17, 2014
DESIGNER
CHECKED G.E.B.
DRAWN VZ
SHEET 1 of 1