

**PROFESSIONAL SERVICES  
TASK ORDER #2  
TO  
SUPPLEMENTAL AGREEMENT # 5  
FOR  
PAVEMENT AND INFRASTRUCTURE MAINTENANCE**

**STATE OF TEXAS           §  
  §  
COUNTY OF TRAVIS       §**

This Supplemental Agreement No. 5 to a contract for Professional Services is made by and between the City of Pflugerville, Texas ("City") and Halff Associates, Inc. ("Consultant"). City and Consultant may be referred to herein singularly as "Party" or collectively as the "Parties."

WHEREAS, the City and Consultant executed an Agreement for Professional Services ("Agreement") on the 3<sup>rd</sup> day of March, 2018 for Pavement and Infrastructure Maintenance program; and

WHEREAS, the City and Consultant previously executed Supplement #5 Agreement for Task Order #1 Professional Services ("Agreement") and extension of Professional Services until December 31<sup>st</sup>, 2022, on the 10 day of March, 2020 for Pavement and Infrastructure Maintenance program; and

WHEREAS, the City and Consultant have previously executed Supplement Agreements #1 through #6 for multiple projects and now desire to entire into Task Order #2 to Supplement #5; and

WHEREAS, the City and Consultant desire to enter into Task Order #2 for Professional Services for the Project in the amount of \$51,784.00, on the 21<sup>st</sup> day of July, 2021 to add professional engineering services for the S. Heatherwilde Blvd Phase III road rehabilitation project ("Project") to the Agreement; and

WHEREAS, it has become necessary to amend the Agreement to modify the provisions for the Scope of Services, compensation, schedule; and

WHEREAS, it is necessary for the City to amend its agreements from time to time to comply with changes in state law relating to contracts of municipalities.

NOW, THEREFORE, premises considered, the City and the Consultant agree that said Agreement is amended as follows:

**I.**

Article III. Scope of Services and Exhibit A, shall be amended as set forth in the attached addendum to Exhibit A .

Article III. Work Schedule and Exhibit B, shall be amended as set forth in the attached addendum to Exhibit B.

Article IV. Compensation to Consultant and Exhibit C (Fee Schedule), shall be \$51,784.00, as shown by the attached Exhibit C (Fee Schedule).

**2.**

Except as amended hereby, and as previously amended as indicated above, the terms of the Agreement shall remain unchanged and in full force and effect.

**EXECUTED** and **AGREED** to as of the dates indicated below.

**CITY OF  
PFLUGERVILLE**

**CONSULTANT**

\_\_\_\_\_  
(Signature)

  
\_\_\_\_\_  
(Signature)

Printed Name: Sereniah Breland

Printed Name: Daniel Franz

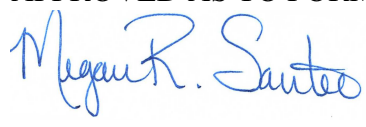
Title: City Manager

Title: Public Works Director

Date: \_\_\_\_\_

Date: 10/6/2021

APPROVED AS TO FORM:

  
\_\_\_\_\_

Charles E. Zech  
City Attorney  
DENTON NAVARRO ROCHA BERNAL & ZECH, P.C.

**ADDENDUM TO EXHIBIT "A"**

**PROPOSED SCOPE OF SERVICES  
For  
HEATHERWILDE BLVD  
PHASE III IMPROVEMENT PROJECT  
CITY OF PFLUGERVILLE, TEXAS**

**PROJECT DESCRIPTION**

The proposed Scope of Services delineates the items that Halff Associates, Inc. (Engineer) will provide to the City of Pflugerville (City) for the project development of the Fiscal Year 2022 Pavement Rehabilitation Projects. The project includes pavement rehabilitation for S. Heatherwilde Blvd from the US Post Office (301 S. Heatherwilde Blvd) to Wells Branch Pkwy. The limits of the Phase III S. Heatherwilde Blvd rehabilitation will begin at the Heatherwilde Phase II limits. The limits of survey work and data collection will begin at Olympic Dr and terminate at Wells Branch Pkwy. Engineer previously collected survey data along Heatherwilde Blvd from Pecan St to Olympic Dr as part of the previous Phase II rehabilitation project. Construction plans and specifications, opinion of probable construction cost, and bid phase services will be provided to the City. Services will be performed for the following roadway:

<b>Roadway</b>	<b>Limits</b>	<b>Length (LF)</b>
S. Heatherwilde Blvd	From the Post Office to Wells Branch Pkwy	6100

The services are separated into the following Tasks and described in more detail below:

- Task 1:** Project Management and Coordination
- Task 2:** Data Collection
- Task 3:** Design Plans and Construction Documents
- Task 4:** Bid Phase Services

## **TASK 1: PROJECT MANAGEMENT & COORDINATION**

### **1.1 Progress Meetings, Reports, and Monthly Invoicing**

For the work performed, Engineer will prepare Monthly Progress Reports and advise the City as to the progress of the work. These Reports will include:

- Tasks completed during the reporting period.
- Tasks planned for upcoming periods.
- Issues encountered and recommended actions to address them.
- Overall Project status and development progress, including a tabulation of Tasks showing percentage complete, and supporting documentation
- Meetings with the City on the overall project (3 meetings have been budgeted as part of the base scope).

### **1.2 Coordination and administration of work products**

- Coordination - Engineer shall designate one Texas Registered Professional Engineer as the Project Manager responsible for Project management, coordination, and communications
- Administration - Engineer will manage Project activities (including sub-consultants), direct the project team/staff, attend monthly meetings with City staff, handle deliverables, and keep records of project communications / files.

#### ***TASK 1 Deliverables:***

- Monthly progress reports and meeting minutes

## **TASK 2: DATA COLLECTION**

### **2.1 Survey**

Mobile LiDAR: Halff will utilize the Mobile LiDAR along the marked preferred routes. (See Exhibit 'A').

Conventional: Halff will blend conventional data as necessary to supplement LiDAR data in obscure areas.

#### **Feature Extraction:**

Feature extraction for the above two items will include (detailed list shown below in 'Deliverables'): Focused from Back of Curb to Back of Curb with in all the marked preferred routes. (See Exhibit 'A'). Pavement and Utilities that fall within above focus areas will items extracted. This will include call outs with rim elevations and pavement material labels.

### ***TASK 2 Deliverables:***

Survey files will be delivered in Microstation Geopak. Distances shall be ground distances, not grid distances, all deliverables will be submitted in surface with a provided scale factor, and in grid.

- Topographic Survey will include a DTM with minor contours at 1-foot intervals and major contours at 5-foot intervals and site planimetrics along the routes
- Probable expected features to be extracted are as follows:
  - Utilities- water meters, manholes, misc. valves etc within previously stated limits.
  - Pavement-Edge of Road (including pavement types), curb & gutter, crown
  - Drainage-Drainage features (top of rim for all sanitary and storm manholes within previously stated limits.

### **TASK 3: DESIGN PLANS AND CONSTRUCTION DOCUMENTS**

Design shall be in accordance with Pflugerville Engineering Design Guidelines. The scope of the project will consist of pavement rehabilitation from existing back of curb to back of curb for the roadway limits listed above. Submittals are anticipated to be a 90% deliverable, addressing of City 90% comments, and providing 100%/Bid documents. Rehabilitation will consist of mill and overlay and/or full depth roadway repair. Formal design of new ADA ramps is not included in this scope based on deliverable durations as defined by the City. ADA ramps requiring replacement will be identified in the plans for contractor bid. Field engineering and design will occur for each associated ramp during construction.

#### **3.1 Roadway Plans (S. Heatherwilde Blvd)**

- Typical sections: showing pavement widths based off existing curb line, pavement design, normal cross-slope, lane widths and right-of-way
- Roadway plan with horizontal alignment
- Limits of construction and pavement design
- Pavement markings and sign relocations (no separate signage & pavement markings plan)
- Identification of travel lane full depth repair vs mill and overlay sections
- Denote any new ADA locations
- Denote adjustments to valve covers and manhole lids (if needed)

#### **3.2 Traffic Control Plans (S. Heatherwilde Blvd)**

- Provide detailed plan sheets, phasing and narrative for traffic control during construction
- Provide detour plans as needed

- Utilize City and TxDOT standards for lane closure to perform street rehabilitation.

***TASK 3 Deliverables:***

- 90% Construction Documents (11x17 plan sheets) and Cost Estimate
- One bid set/ bid package will be produced that will include:
  - Final Bid Set (11x17 plan sheets)
  - OPCC and Bid Form
  - Project Manual

100%/Bid Construction Documents (11x17 plan sheets) and Cost Estimate)

**TASK 4: BID PHASE SERVICES**

It is assumed that the City staff will post all bid information online and in the required publications.

**4.1 Bid Phase**

- Attend pre-bid meeting at City and answer bidder questions
- Provide assistance to the City in responding to questions from contractors and prepare contract addenda as necessary
- Attend bid opening at City
- Bid tabulation, evaluation, and award recommendation

***TASK 4 Deliverables:***

- Bid tabulation for all submitted contractor bids
- Engineer recommendation letter for Contractor award

**COMPENSATION**

Compensation for services identified in Tasks 1-4 shall be paid by the City to the Engineer for all services required for work stated as lump sum amounts. A breakdown of the estimated effort for all Tasks is provided with this proposal as part of Exhibit B. Any additional scope of work not identified in Tasks 1-4 which may be requested by the City or required for the project will be authorized through a Supplemental design agreement.

## ITEMS EXCLUDED FROM THE SCOPE OF SERVICES

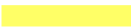



1. Construction Phase Services
2. Geotechnical investigation, analysis or reporting
3. Subsurface utility engineering
4. Survey or design of sidewalk, driveways or curb ramps
5. TDLR Project Registration and RAS review
6. Vertical alignments or profiles
7. Public Involvement of any kind
8. Permitting
9. Environmental services
10. Analysis or design of drainage
11. Landscaping, irrigation, or hardscape (enhanced flatwork) facilities
12. Traffic counts, LOS analysis, signal timing plans
13. Design of public and franchised utility relocations
14. Preparing/submitting a Stormwater Pollution Prevention Plan (SWPPP)
15. Preparing property parcels for acquisition
16. Property acquisition or negotiations
17. Filing fees, permit fees
18. Coordination with individual property owners

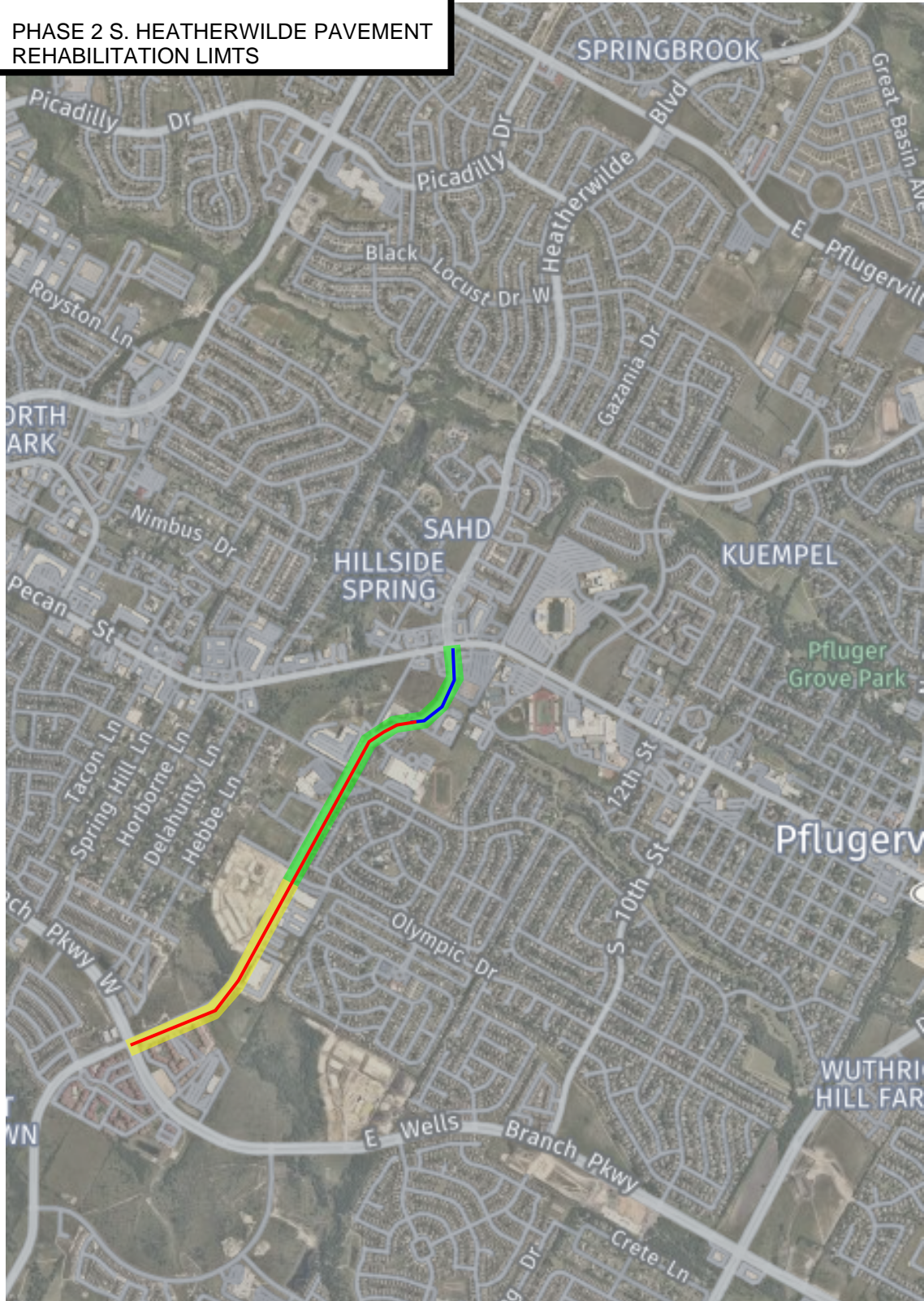
*Any additional services required beyond those specifically identified in this proposal are beyond the scope of services to be provided under this agreement. A scope and commensurate fee for any required additional services would be negotiated and provided under a separate supplemental agreement to this contract.*

# EXHIBIT A TO SCOPE OF SERVICES

## PROPOSED SURVEY LIMITS

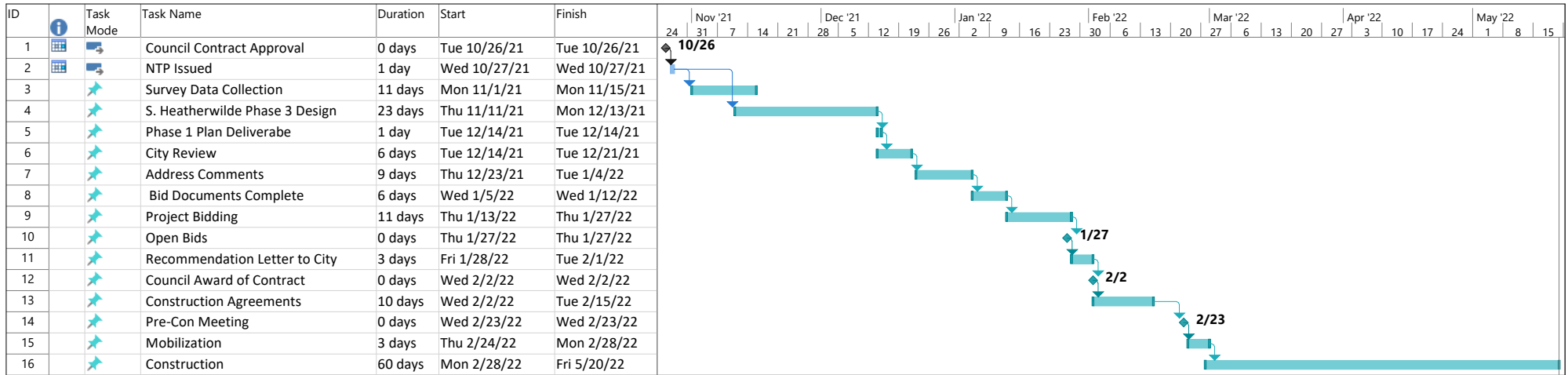
**LEGEND**

-  PHASE 3 SURVEY LIMITS
-  PHASE 2 SURVEY LIMITS
-  PHASE 3 S. HEATHERWILDE PAVEMENT REHABILITATION LIMITS
-  PHASE 2 S. HEATHERWILDE PAVEMENT REHABILITATION LIMITS





## ADDENDUM TO EXHIBIT "B"



Project: Prelim Schedule  
Date: Wed 10/6/21

Task		Project Summary		Manual Task		Start-only		Deadline	
Split		Inactive Task		Duration-only		Finish-only		Progress	
Milestone		Inactive Milestone		Manual Summary Rollup		External Tasks		Manual Progress	
Summary		Inactive Summary		Manual Summary		External Milestone			

## EXHIBIT "C"

### PROPOSED FEE SCHEDULE- FY2022 Road Rehab (Heatherwilde Phase III)

PROJECT TASK	PROJECT MANAGER	CIVIL ENGINEER, PE	CIVIL ENGINEER, EIT	RPLS PROJECT MANAGER	SR SURVEY/ SUE TECH	CADD TECHNICIAN	Mobil LIDAR	CLERICAL	TOTAL
<b>Task 1: Project Management and Coordination</b>									
1.1 Progress Meetings, Reports, and Monthly Invoicing	8.0	10.0						4.0	\$4,138.00
1.2 Coordination and Administration	4.0	2.0							\$1,334.00
Subtotal									<b>\$5,472.00</b>
<b>Task 2: Data Collection</b>									
2.2 Survey				3.0	38.0		1.0		\$13,990.00
Subtotal									<b>\$13,990.00</b>
<b>Task 3: Design Plans and Construction Documents</b>									
Roadway plans (90%)	4.0	20.0	40.0			20.0			\$11,464.00
Traffic Control Plans (90%)	1.0	8.0	16.0			8.0			\$4,444.00
Quantity Tabulation (90%)	1.0	8.0	12.0						\$3,212.00
Roadway plans (100%)	0.5	4.0	8.0						\$1,842.00
Traffic Control Plans (100%)	0.5	4.0	8.0						\$1,842.00
Quantity Tabulation (100%)	0.5	2.0	4.0						\$980.00
Project Manual, Bid form, and Specifications	1.0	8.0	12.0						\$3,212.00
Subtotal									<b>\$26,996.00</b>
<b>Task 4: Bid Phase Services</b>									
Prebid and Posting Assistance	4.0	4.0							\$1,724.00
RFI	2.0	4.0							\$1,252.00
Bid Tab and Recommendation	1.0	6.0	8.0						\$2,350.00
Subtotal									<b>\$5,326.00</b>
<b>TOTAL Hours</b>	<b>27.5</b>	<b>80.0</b>	<b>108.0</b>	<b>3.0</b>	<b>38.0</b>	<b>28.0</b>	<b>1.0</b>	<b>4.0</b>	
<b>TOTAL PROJECT</b>									<b>\$51,784.00</b>
<b>HOURLY RATES</b>	<b>\$236</b>	<b>\$195</b>	<b>\$118</b>	<b>\$240</b>	<b>\$165</b>	<b>\$95</b>	<b>\$7,000</b>	<b>\$75</b>	