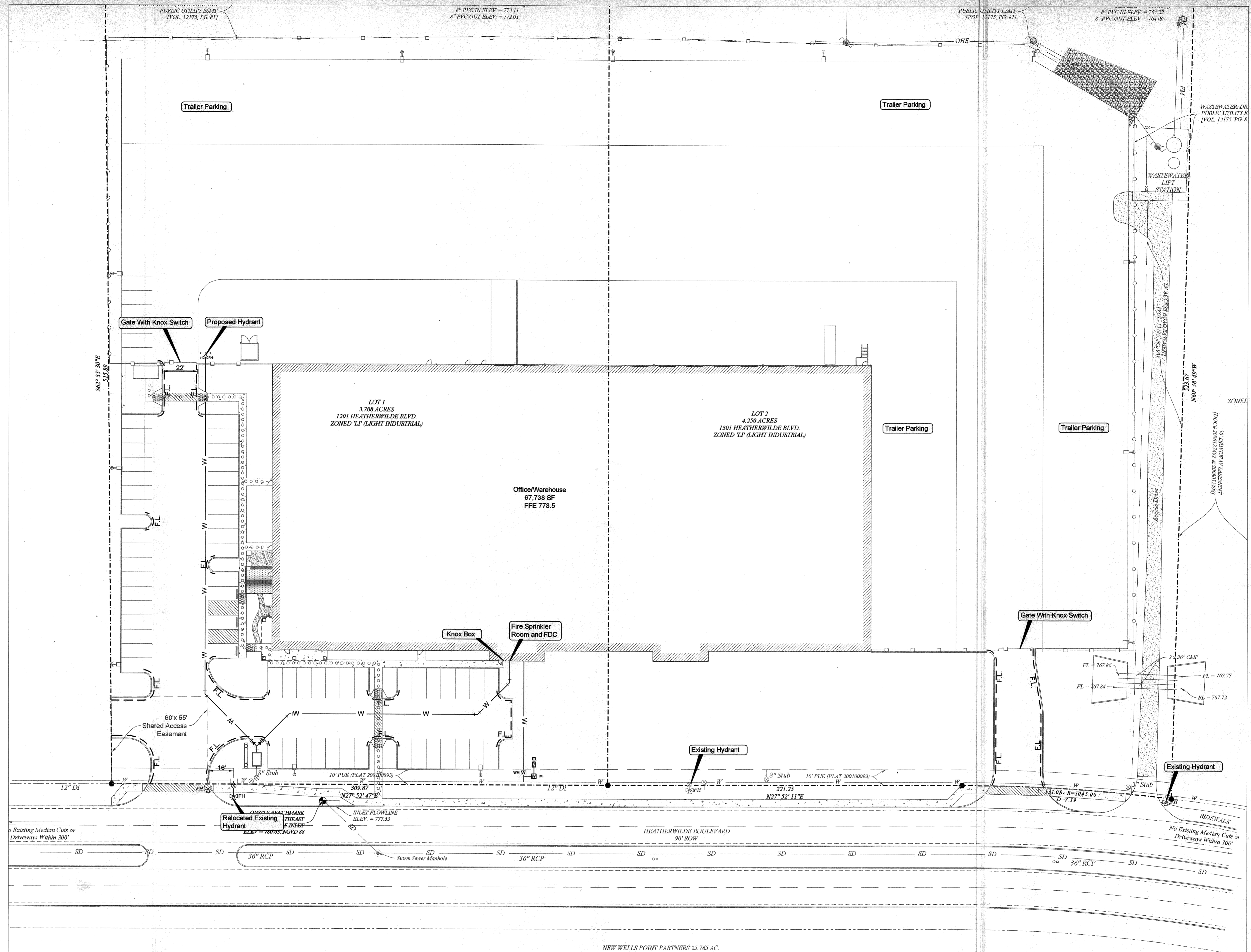
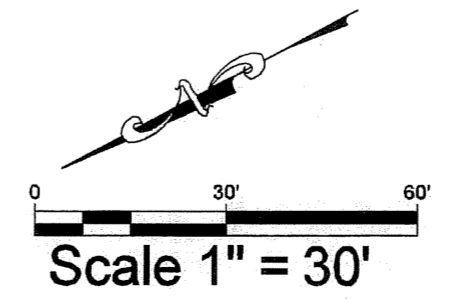


12/29/2010 11:40:58 AM Development 200002010 (Bison Logistics) Fire Protection Plan.dwg



Fire Protection Data
 Building Type = IIB
 Building Size = 67,738 sf
 Required Fire Flow = 2,250 gpm
 w/75% reduction due to
 sprinkler system = 1,500 gpm
 Required hydrants at 1,500 gpm = 1



Fire Zone Note
 Establish fire zone notes as shown on site by painting curb red. Stencil the words "Fire Zone/Tow-Away Zone" in white letters at least 3 inches high at 35 foot intervals along the curb. Additionally, signs shall be posted at both ends of a fire zone and at intervals of 50 feet or less. Alternate marking of the fire lanes may be approved by the Fire Chief provided the fire lanes are clearly identified at both ends and at intervals not to exceed 35 feet.

DATE: DDT 2010
 DESIGNED: JKR
 DRAWN: CSW
 CHECKED: JKR
 JOB NO.: DEV 100206

REVISIONS/CORRECTIONS	
NO.	DESCRIPTION

BISON GLOBAL LOGISTICS
 1201 HEATHERWILDE BOULEVARD
 PFLUGERVILLE, TX 78660

FIRE PROTECTION PLAN



GARRETT-IHNNEN
 CIVIL ENGINEERS
 3600 WEST PARMER LANE
 SUITE 212
 AUSTIN, TEXAS 78727
 TELEPHONE: (512) 454-2400
 FACSIMILE: (512) 454-2420
 TUBE FIRM NO. P-650

SHEET NUMBER
C5