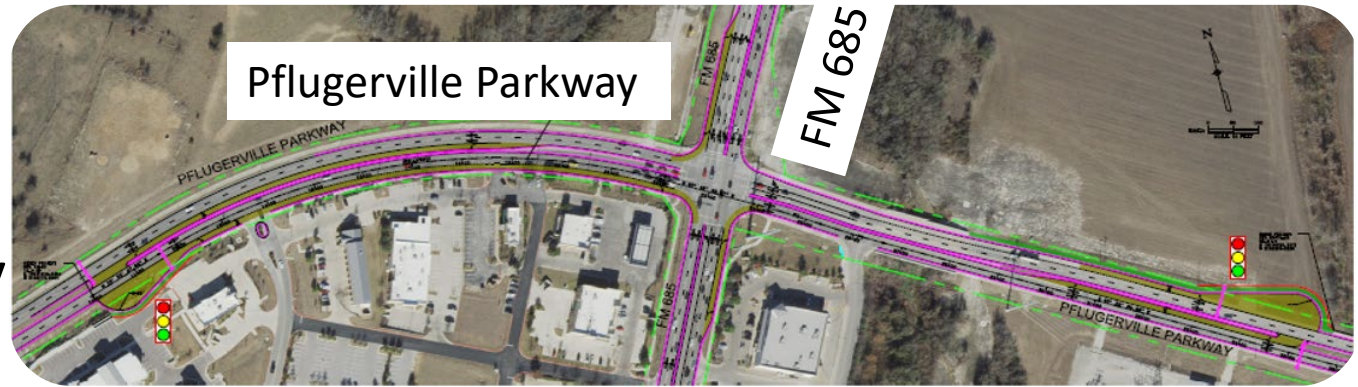


**Approving a Professional Services Agreement with Burns and McDonnell Engineering Company, Inc., in the amount of \$767,795 for professional engineering services associated with the Intersection Improvements II (E. Pflugerville Parkway at FM685 and Copper Mine Overpass - SH130 at FM 685, and authorizing the City Manager to execute the same.**

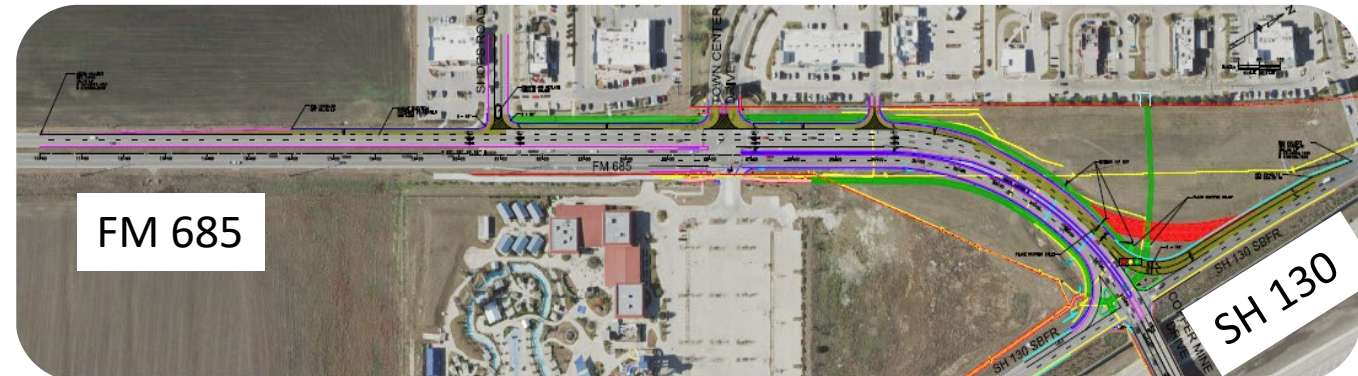


# Intersection Improvements

- Survey and Subsurface Utility Engineering Services
- Final Design & Permitting
- Bid & Construction Services
- Acquisition Services
- Quality Control/Quality Assurance
- Environmental



E. Pflugerville Parkway at FM 685



E. Pflugerville Parkway at FM 685 Copper Mine Overpass

# Recommended Action

Approve a Professional Services Agreement with Burns and McDonnell Engineering Company, Inc., in the amount of \$767,795 for professional engineering services associated with the Intersection Improvement Projects

